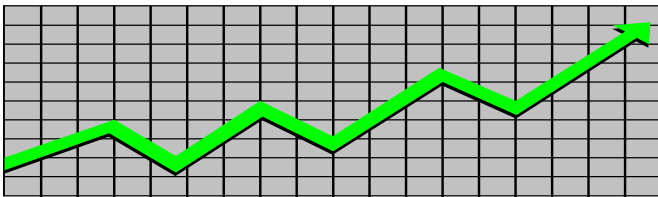


State of New Jersey
Department of Human Services
Division of Family Development

CURRENT PROGRAM STATISTICS



May 2018
Natasha Johnson, Director

DIVISION OF FAMILY DEVELOPMENT CURRENT PROGRAM STATISTICS

MAY 2018

TABLE OF CONTENTS

HIGHLIGHTS:

WFNJ/TANF.....	ii
NJ SNAP.....	ii
EMERGENCY ASSISTANCE.....	ii
GENERAL ASSISTANCE.....	iii
GA Emergency Assistance.....	iii
GA Program.....	iii
CHILD SUPPORT SERVICES.....	iii
WORK FIRST NEW JERSEY (WFNJ).....	iii
STATISTICS- BY STATE & COUNTY.....	1
Table 1: WFNJ/TANF Families & Persons (NJ Statewide) May 2016 to 2018.....	1
Table 2: WFNJ/TANF Families (by County)- May 2018.....	2
Table 2B: WFNJ/TANF Persons, Adults, & Children (by County)- May 2018.....	3
Table 3: TANF Work Participation Rates Over 12 Month Period (by County)- May 2018.....	4
Table 4: TANF Work Participation Rates Over 12 Month Period (NJ Statewide) May 2018.....	5
Table 5: NJ SNAP Households/Persons (NJ Statewide) May 2016 to 2018.....	6
Table 6: NJ SNAP Recipient Trends (NJ Statewide) May 2016 to 2018.....	7
Table 7: NJ SNAP Households/Persons (by County)- May 2018.....	8
Table 8: Emergency Assistance Program (NJ Statewide) May 2016 to 2018.....	9
Table 9: Emergency Assistance Program (by County)- May 2018.....	10
Table 10: General Assistance Program (NJ Statewide) May 2016 to 2018.....	11
Table 11: General Assistance Program (by County)- May 2018.....	12
Table 12: Child Support Services Distributions (NJ Statewide) FFY 2018.....	13
Table 13: Child Support Services Paternities Established- May 2018.....	14
Table 14: Child Support Services Cases With Orders- May 2018.....	15
Table 15: Child Support Services Collections On Current Support- May 2018.....	16
Table 16: Child Support Services Cases With Payments On Arrears- May 2018.....	17
Table 17: WFNJ Statistical Summary- May 2018.....	18
ACRONYMS.....	19
EXPLANATORY NOTES.....	20
WFNJ Statistical Summary (Table 17).....	20

DIVISION OF FAMILY DEVELOPMENT CURRENT PROGRAM STATISTICS MAY 2018

Each month the Division of Family Development publishes its program statistics for: WFNJ/TANF, NJ SNAP, Emergency Assistance, General Assistance, and Child Support Services. When possible, information is provided separately for children and adults. Many tables also provide trend data with information broken down by county for readers to consider. This report is compiled and prepared by The Bureau of Research & Reporting.

WFNJ/TANF

- As of the end of May, the TANF caseload had decreased by 2,886 cases, from 16,401 in May 2017 to 13,515 in May 2018, a decrease of 17.6%.
- The counties where the family caseload percentage increased since May 2017 were Hunterdon (26.1%) and Morris (6.5%).
- The counties with caseloads that decreased the most since May 2017 were Sussex (-22.5%), Passaic (-25.1%) and Bergen (-25.6%).
- Of the WFNJ/TANF cases, 4,514 or 33.4% were child-only in May 2018.
- The counties with the most child-only cases were Camden (690), Essex (676) and Hudson (469).
- Essex (5,815), Camden (4,430), Passaic (4,008), Hudson (3,910) and Atlantic (2,644) counties had the greatest number of persons receiving TANF in May 2018.

NJ SNAP (formerly FOOD STAMPS)

- In May 2018, there were 371,251 households receiving NJ SNAP benefits. The number of NJ SNAP households decreased by 25,317 or 6.4%, since May 2017.
- There were 740,594 persons receiving NJ SNAP benefits as of May 2018, a decrease of 50,656 or 6.4% since May 2017.
- The counties having the highest caseload decrease since May 2017 are Bergen (-9.0%), Ocean (-11.6%) and Burlington (-12.6%).

EMERGENCY ASSISTANCE

- There were 1,753 TANF families receiving Emergency Assistance (EA) in May 2018, a decrease of 310 or 15.0% since May 2017.
- In May 2018, EA payments were made for 439 SSI recipients.

DIVISION OF FAMILY DEVELOPMENT CURRENT PROGRAM STATISTICS MAY 2018

- There were 2,159 GA cases with Emergency Assistance payments in May 2018, a decrease of 248 or 10.3% since May 2017.
- The counties that showed the highest percent increase in Emergency Assistance payments were Ocean (20.7%), Salem (30.8%) and Monmouth (63.6%).
- The counties that showed the highest percent decrease in Emergency Assistance payments were Gloucester (-32.8%), Hudson (-34.5%) and Cumberland (-70.4%).

GENERAL ASSISTANCE

- The total numbers of cases receiving GA has decreased from 14,512 to 12,192 since May 2017, a decrease of 16.0%.
- There were 5,065 Employable GA and 7,127 Unemployable GA cases in May 2018.
- The counties that showed a percent increase for GA cases were Somerset (1.3%), Hunterdon (6.3%) and Cape May (12.2%) since May 2017.
- The counties that showed the highest percent decrease for GA cases since May 2017 were Passaic (-27.0%), Union (-27.8%) and Sussex (-29.0%).
- In May 2018, GA cases showed a 1.6% decrease since April 2018.

CHILD SUPPORT SERVICES (Quarterly Report)

- The total collection for the Child Support Services Program was about \$315 million from January 2018 to March 2018, a decrease of 5.3 percent over the same period for FFY 2017.
- Total distributions decreased 6.5% from March 2017.

WORK FIRST NEW JERSEY (WFNJ)

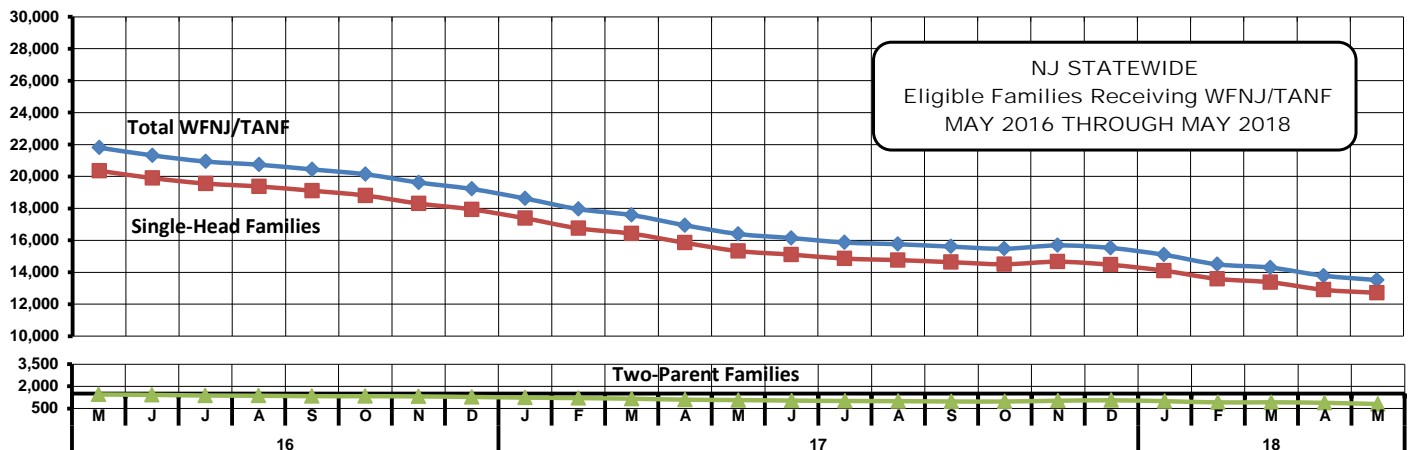
- During the report month of May 2018, there were 1,346 families in which at least one member was employed and an additional 270 families whose WFNJ assistance cases were closed due to employment - related earnings.
- The three counties with the greatest number of employed active WFNJ recipients were: Essex (320), Camden (202) and Hudson (130).
- There were 1,929 former TANF cases receiving post-TANF support in the form of child care assistance.

TABLE 1: WFNJ/TANF PROGRAM

STATEWIDE NUMBER OF APPLICATIONS AND TERMINATIONS DURING MAY 2018

NUMBER OF ELIGIBLE FAMILIES & PERSONS RECEIVING WFNJ/TANF FOR MAY 2018

		MAY 2016 THROUGH MAY 2018										
		Cases Added	Cases Closed	Child-Only Cases ‡	Total Singl-Head Families	2- Parent Families	Total WFNJ/TANF Families	%CHNG (1 Yr.)	Total Persons	%CHNG (1 Yr.)	Adults	Children
2016	MAY	1,763	2,568	6,216	20,357	1,446	21,803	(24.5)	54,214	(26.7)	17,033	37,181
	JUN	1,839	2,417	6,094	19,898	1,421	21,319	(24.4)	52,864	(26.8)	16,646	36,218
	JUL	1,938	2,445	5,987	19,558	1,378	20,936	(24.7)	51,942	(26.8)	16,327	35,615
	AUG	1,924	2,146	5,931	19,374	1,363	20,737	(23.7)	51,450	(25.6)	16,169	35,281
	SEP	1,943	2,360	5,912	19,108	1,333	20,441	(23.7)	50,626	(25.8)	15,862	34,764
	OCT	1,701	2,090	5,858	18,807	1,331	20,138	(24.0)	49,962	(25.7)	15,611	34,351
	NOV	1,614	2,222	5,766	18,305	1,317	19,622	(23.7)	48,737	(25.3)	15,173	33,564
	DEC	1,592	2,088	5,762	17,937	1,280	19,217	(23.7)	47,656	(25.2)	14,735	32,921
2016 Average		1,788	2,366	6,117	20,051	1,433	21,484		53,508		16,800	36,709
2017	JAN	1,479	2,069	5,658	17,384	1,236	18,620	(23.7)	46,466	(24.6)	14,198	32,268
	FEB	1,436	2,167	5,591	16,753	1,203	17,956	(23.6)	44,778	(24.1)	13,568	31,210
	MAR	1,440	1,861	5,516	16,420	1,162	17,582	(23.8)	43,992	(23.6)	13,228	30,764
	APR	1,328	2,018	5,416	15,850	1,096	16,946	(25.0)	42,479	(24.8)	12,626	29,853
	MAY	1,295	1,835	5,222	15,332	1,069	16,401	(24.8)	41,214	(24.0)	12,248	28,966
	JUN	1,440	1,750	5,115	15,110	1,034	16,144	(24.3)	40,521	(23.3)	12,063	28,458
	JUL	1,431	1,780	5,042	14,859	1,007	15,866	(24.2)	39,840	(23.3)	11,831	28,009
	AUG	1,446	1,617	5,001	14,764	995	15,759	(24.0)	39,673	(22.9)	11,753	27,920
	SEP	1,525	1,747	4,963	14,635	974	15,609	(23.6)	39,270	(22.4)	11,620	27,650
	OCT	1,534	1,704	4,876	14,504	972	15,476	(23.2)	38,907	(22.1)	11,572	27,335
	NOV	1,539	1,581	4,885	14,662	1,022	15,684	(20.1)	39,534	(18.9)	11,821	27,713
	DEC	1,434	1,686	4,850	14,470	1,054	15,524	(19.2)	39,246	(17.6)	11,728	27,518
2017 Average		1,444	1,818	5,178	15,395	1,069	16,464		41,327		12,355	28,972
2018	JAN	1,289	1,706	4,770	14,103	994	15,097	(18.9)	38,222	(17.7)	11,321	26,901
	FEB	1,226	1,885	4,695	13,589	910	14,499	(19.3)	36,645	(18.2)	10,714	25,931
	MAR	1,097	1,398	4,670	13,377	918	14,295	(18.7)	35,943	(18.3)	10,543	25,400
	APR	1,050	1,548	4,610	12,905	883	13,788	(18.6)	34,557	(18.6)	10,061	24,496
	MAY	1,177	1,506	4,514	12,715	800	13,515	(17.6)	33,791	(18.0)	9,801	23,990
2018 AVG to date		1,168	1,609	4,652	13,338	901	14,239		35,832		10,488	25,344



Data is derived from NJ MMIS Shared Data Warehouse Issuance files.
Effective July 2013 this data query source was converted to the SDW

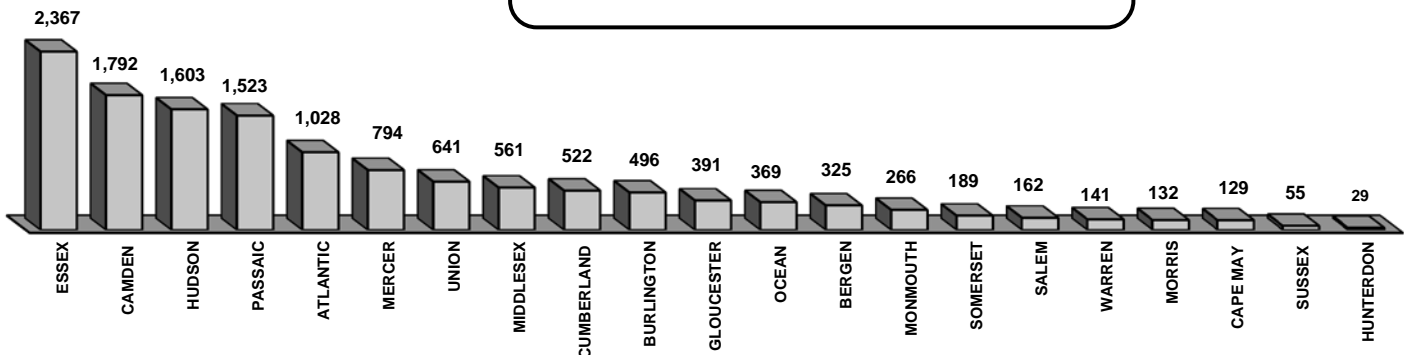
‡ Child-only cases are defined as families in which no eligible adult receives TANF program benefits, yet the family continues to be headed by at least one of the biological parents, or grandparents, or other appropriate adult.

Table 2
WFNJ/TANF
PROGRAM

NUMBER OF APPLICATIONS AND TERMINATIONS BY COUNTY DURING MAY 2018
NUMBER OF ELIGIBLE FAMILIES RECEIVING WFNJ/TANF REPORTED FOR MAY 2018

County			Child-	Total		Total		% Chng (3 Mon)	% Chng (1 Yr)
	Cases Added	Cases Closed**	Only Cases ‡	1-Adult Cases	Singl-Head Families	2-Parent Families	WFNJ/TANF Families		
ATLANTIC	64	82	338	608	946	82	1,028	(4.9)	(19.7)
BERGEN	48	35	93	211	304	21	325	2.2	(25.6) *
BURLINGTON	41	67	160	303	463	33	496	(9.7)	(20.8)
CAMDEN	136	187	690	1,030	1,720	72	1,792	(5.8)	(15.2)
CAPE MAY	11	14	48	71	119	10	129	0.8	(11.6)
CUMBERLAND	48	51	222	257	479	43	522	(6.8)	(6.3) Δ
ESSEX	223	307	676	1,568	2,244	123	2,367	(5.4)	(16.8)
GLOUCESTER	38	53	145	230	375	16	391	(9.7)	(22.4)
HUDSON	156	179	469	1,033	1,502	101	1,603	(5.2)	(13.1)
HUNTERDON	6	2	10	19	29	0	29	16.0	26.1 Δ
MERCER	64	73	305	446	751	43	794	(4.6)	(19.5)
MIDDLESEX	57	63	263	271	534	27	561	(2.3)	(17.5)
MONMOUTH	17	35	114	146	260	6	266	(8.3)	(15.8)
MORRIS	16	15	31	83	114	18	132	4.8	6.5 Δ
OCEAN	36	47	107	238	345	24	369	(7.1)	(16.7)
PASSAIC	98	144	467	987	1,454	69	1,523	(7.1)	(25.1) *
SALEM	22	26	62	90	152	10	162	(7.4)	(11.0)
SOMERSET	16	29	69	110	179	10	189	(9.1)	(11.3)
SUSSEX	9	7	23	28	51	4	55	5.8	(22.5) *
UNION	52	73	191	373	564	77	641	(3.0)	(22.4)
WARREN	19	17	31	99	130	11	141	(6.0)	(7.8)
NJ TOTAL	1,177	1,506	4,514	8,201	12,715	800	13,515	(5.5)	(17.6)

Total WFNJ/TANF Families
MAY 2018
By County



Data is derived from NJ MMIS Shared Data Warehouse Issuance files.

Effective July 2013 this data query source was converted to the SDW

‡ Child-only cases are defined as families in which no eligible adult receives TANF program benefits, yet the family continues to be headed by at least one of the biological parents, or grandparents, or other appropriate adult

** "Cases closed" include cases that received a benefit in the prior month, but did not receive any TANF benefit for the report month.

"Δ=higher caseload % change

"*=lower caseload % change

Table 2B

WFNJ/TANF

PROGRAM

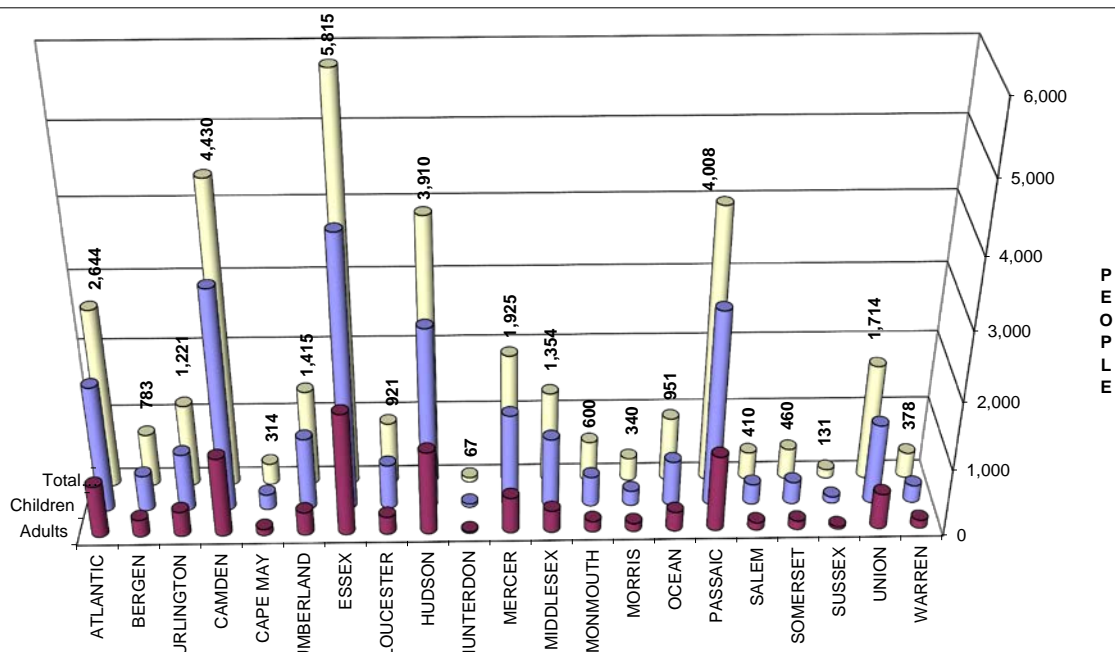
Δ= ↑ Caseload %

*= ↓ Caseload %

NUMBER OF PARTICIPATING PERSONS, ADULTS, AND CHILDREN BY COUNTY FOR MAY 2018

PERSONS

County	Adults	Children	Child/Adult Ratio	Total Persons	% Chng (1 Yr)	Persons Per Case
ATLANTIC	772	1,872	2.42	2,644	(19.2)	2.57
BERGEN	253	530	2.09	783	(26.1) *	2.41
BURLINGTON	369	852	2.31	1,221	(20.9)	2.46
CAMDEN	1,174	3,256	2.77	4,430	(15.6)	2.47
CAPE MAY	91	223	2.45	314	(15.1)	2.43
CUMBERLAND	343	1,072	3.13	1,415	(4.5) Δ	2.71
ESSEX	1,814	4,001	2.21	5,815	(17.8)	2.46
GLOUCESTER	262	659	2.52	921	(23.5)	2.36
HUDSON	1,235	2,675	2.17	3,910	(14.8)	2.44
HUNTERDON	19	48	2.53	67	0.0 Δ	2.31
MERCER	532	1,393	2.62	1,925	(18.6)	2.42
MIDDLESEX	325	1,029	3.17	1,354	(14.5)	2.41
MONMOUTH	158	442	2.80	600	(18.7)	2.26
MORRIS	119	221	1.86	340	14.9 Δ	2.58
OCEAN	286	665	2.33	951	(14.3)	2.58
PASSAIC	1,125	2,883	2.56	4,008	(26.6) *	2.63
SALEM	110	300	2.73	410	(10.7)	2.53
SOMERSET	130	330	2.54	460	(11.5)	2.43
SUSSEX	36	95	2.64	131	(27.6) *	2.38
UNION	527	1,187	2.25	1,714	(21.6)	2.67
WARREN	121	257	2.12	378	(6.7)	2.68
NJ TOTAL	9,801	23,990	2.45	33,791	(18.0)	2.50



Data is derived from NJ MMIS Shared Data Warehouse Issuance files.
Effective July 2013 this data query source was converted to the SDW

TABLE 3

**Work Participation Rates Achieved Over 12 Month Period
Ending With MAY 2018**

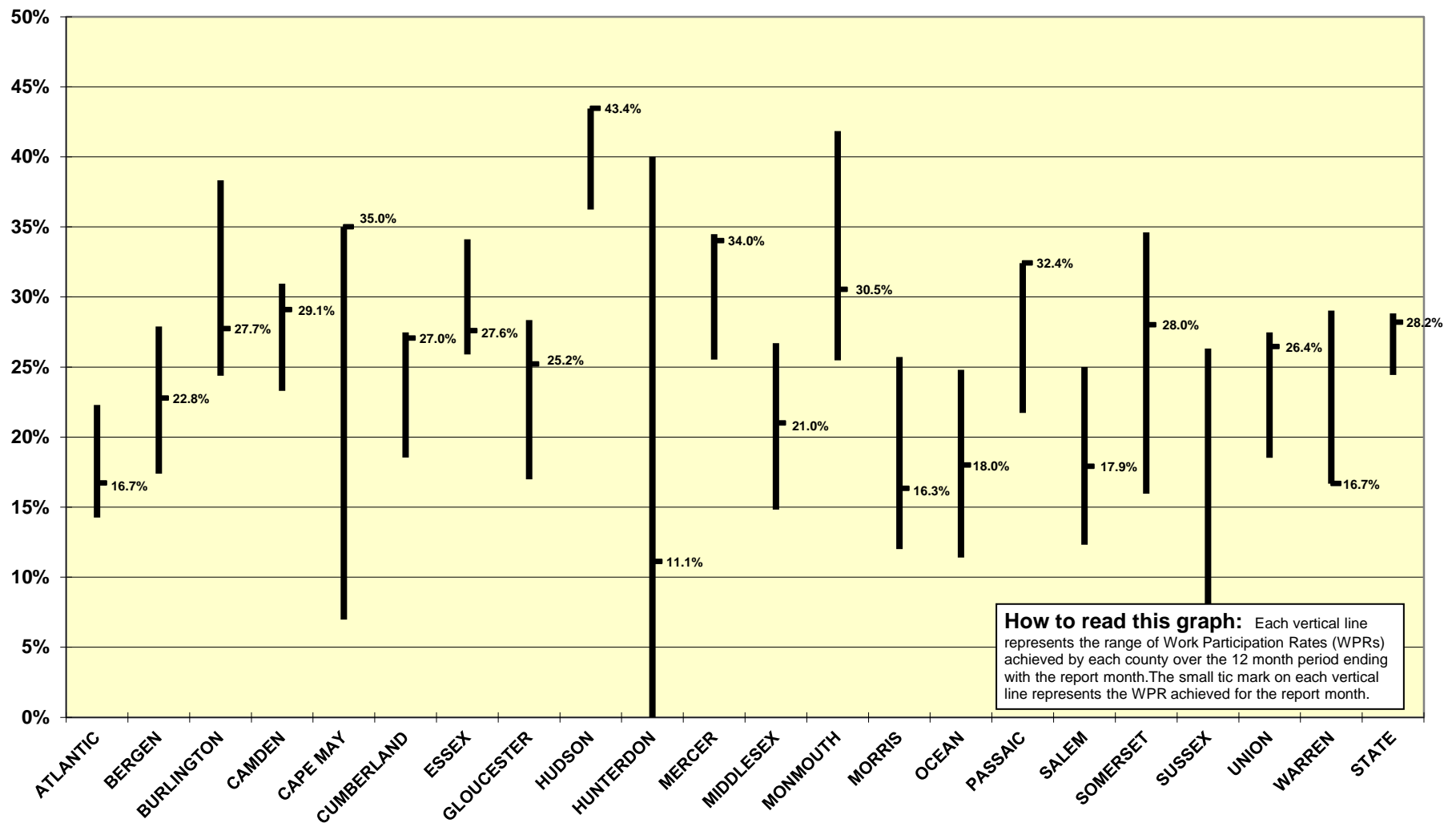
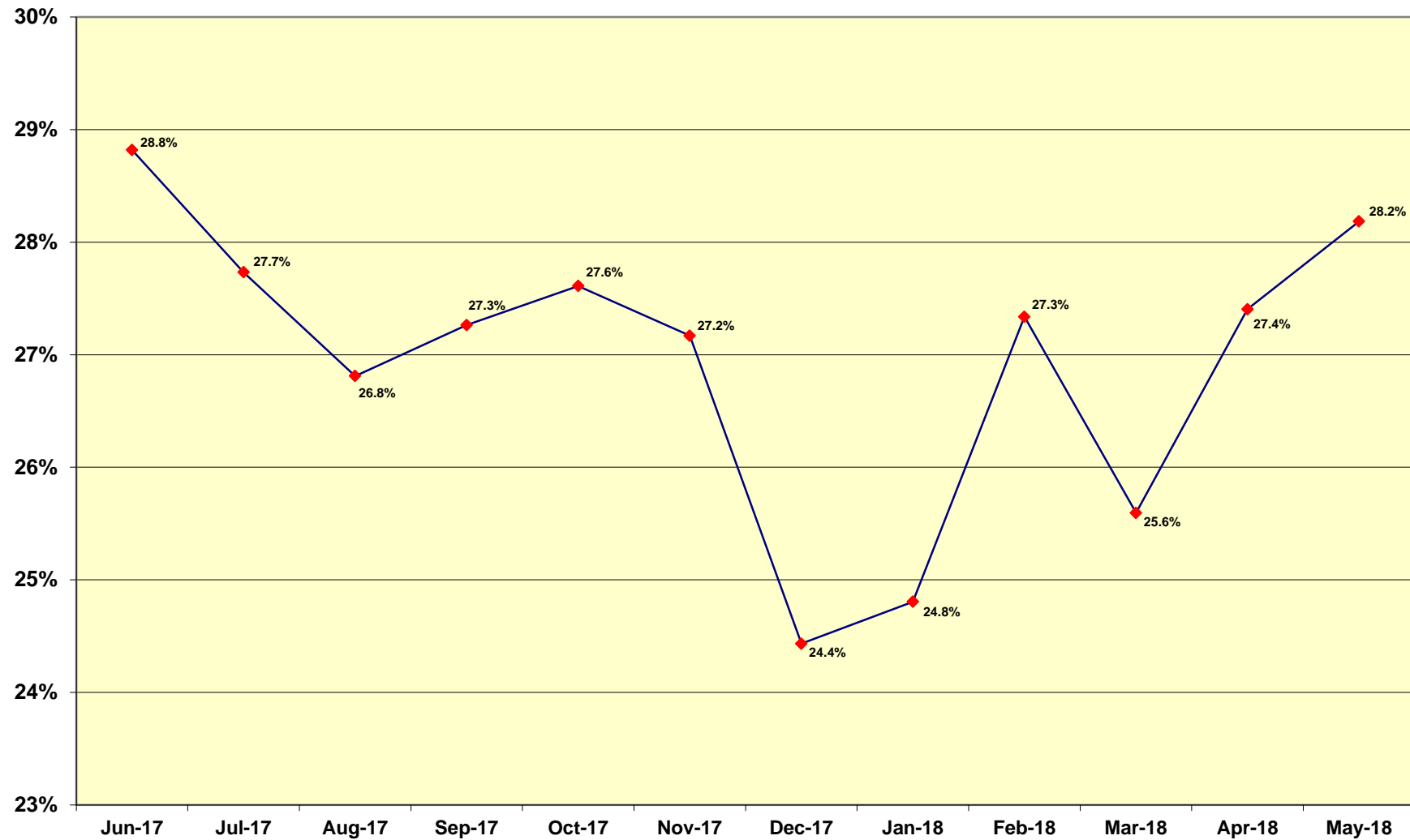


TABLE 4

**WFNJ/TANF Work Participation Rates
for 12-Month Period Ending with MAY 2018 Statewide**



* The Work Participation rate measures the number of countable Temporary Assistance for Needy Families (TANF) participants based on federal formula. The reported rate is considered to be preliminary until officially calculated by the federal government soon after the close of each federal fiscal year.

Table 5
NJ SNAP
(FOOD STAMPS)

NUMBER OF PARTICIPATING HOUSEHOLDS, PERSONS, ADULTS AND CHILDREN FOR MAY 2018 (STATEWIDE)

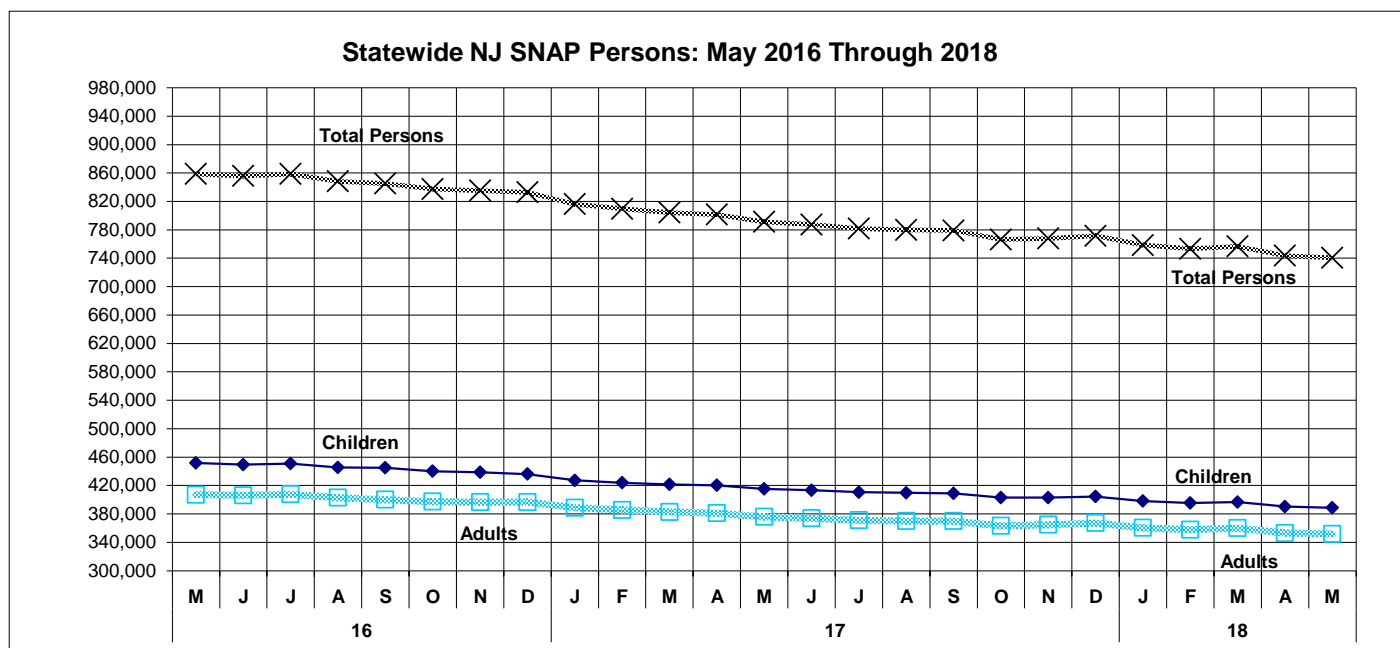
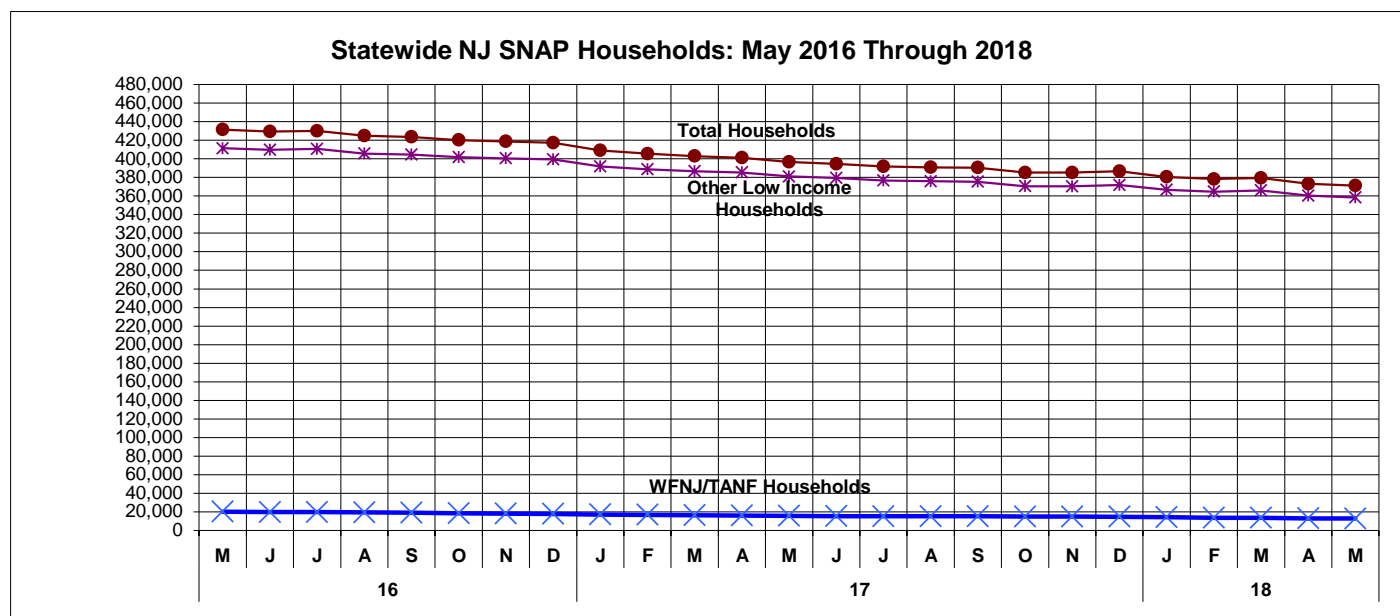
MAY 2016 THROUGH MAY 2018

		HOUSEHOLDS				PERSONS				Age 60+	People with a disability
		WFNJ/ TANF	Other low income	TOTAL	% CHNG (1 Yr.)	Adults	Children	TOTAL	% CHNG (1 Yr.)		
2016	MAY	20,066	411,401	431,467	-3.5%	451,706	406,955	858,661	-3.4%		
	JUN	19,521	409,831	429,352	-3.5%	449,541	406,259	855,800	-3.2%		
	JUL	19,521	410,696	430,217	-3.4%	450,900	407,672	858,572	-3.1%		
	AUG	19,335	405,719	425,054	-4.6%	445,381	402,834	848,215	-4.2%		
	SEP	19,095	404,660	423,755	-4.6%	445,123	400,055	845,178	-4.3%		
	OCT	18,374	401,887	420,261	-6.3%	440,110	397,229	837,339	-6.1%		
	NOV	18,083	400,647	418,730	-5.6%	438,718	396,519	835,237	-5.2%		
	DEC	17,706	399,542	417,248	-6.4%	436,173	396,733	832,906	-5.9%		
2016 Average		19,814	409,518	429,332		449,778	404,935	854,714			
2017	JAN	17,044	391,958	409,002	-7.7%	427,349	388,777	816,126	-7.3%		
	FEB	16,687	388,842	405,529	-7.4%	423,886	385,701	809,587	-6.7%		
	MAR	16,158	386,779	402,937	-7.8%	421,536	382,755	804,291	-7.2%		
	APR	15,935	385,361	401,296	-8.3%	420,390	381,088	801,478	-7.8%		
	MAY	15,525	381,043	396,568	-8.1%	415,301	375,949	791,250	-7.9%		
	JUN	15,348	379,341	394,689	-8.1%	413,436	373,920	787,356	-8.0%		
	JUL	15,109	376,747	391,856	-8.9%	410,582	371,153	781,735	-8.9%		
	AUG	15,071	375,901	390,972	-8.0%	409,795	370,000	779,795	-8.1%	132,403	221,507
	SEP	15,032	375,469	390,501	-7.8%	409,052	369,928	778,980	-7.8%	132,065	221,449
	OCT	14,762	370,462	385,224	-8.3%	403,103	363,198	766,301	-8.5%	130,948	219,170
	NOV	14,783	370,436	385,219	-8.0%	403,158	364,706	767,864	-8.1%	130,391	219,210
	DEC	14,648	371,916	386,564	-7.4%	404,418	367,199	771,617	-7.4%	130,292	222,460
2017 Average		15,509	379,521	395,030		413,501	374,531	788,032		131,220	220,759
2018	JAN	13,996	366,670	380,666	-6.9%	398,026	360,502	758,528	-7.1%	128,879	218,735
	FEB	13,566	364,750	378,316	-6.7%	395,314	357,938	753,252	-7.0%	128,094	217,046
	MAR	13,362	366,128	379,490	-5.8%	396,620	360,051	756,671	-5.9%	127,792	216,741
	APR	12,787	360,385	373,172	-7.0%	390,319	353,157	743,476	-7.2%	126,571	214,558
	MAY	12,646	358,605	371,251	-6.4%	388,870	351,724	740,594	-6.4%	125,945	213,705
2018 AVG to date		13,271	363,308	376,579		393,830	356,674	750,504		127,456	216,157

This Table is based on those Households & Persons that received SNAP issuances (benefits) during the month.

Data is derived from NJ MMIS Shared Data Warehouse.
Effective July 2013 this data query source was converted to the SDW.

**TABLE 6: NJ SNAP (FOOD STAMPS)
TRENDS FOR PARTICIPATING HOUSEHOLDS & PERSONS
MAY 2016 THROUGH MAY 2018 (STATEWIDE)**

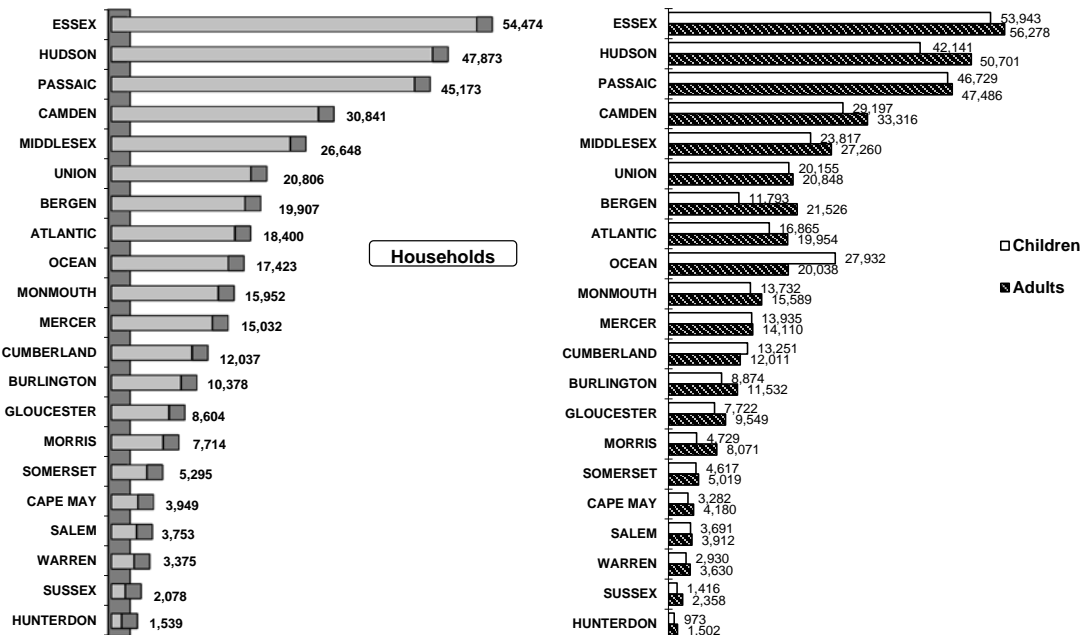


Data is derived from NJ MMIS Shared Data Warehouse.
Effective July 2013 this data query source was converted to the SDW.

Table 7
NJ SNAP**NUMBER OF PARTICIPATING HOUSEHOLDS, PERSONS, ADULTS
AND CHILDREN BY COUNTY FOR MAY 2018**

Δ= ↑ Caseload %
*= ↓ Caseload %

County	HOUSEHOLDS				PERSONS					
	WFNJ/ TANF	Other low income	TOTAL	% Chng (1 Yr)	Adults	Children	TOTAL	% Chng (1 Yr)	Age 60+	People with a disability
ATLANTIC	919	17,481	18,400	(7.6)	19,954	16,865	36,819	(8.1)	4,974	9,753
BERGEN	313	19,594	19,907	(9.0) *	21,526	11,793	33,319	(10.1) *	11,950	14,906
BURLINGTON	442	9,936	10,378	(12.6) *	11,532	8,874	20,406	(12.0) *	2,828	6,589
CAMDEN	1,608	29,233	30,841	(4.2)	33,316	29,197	62,513	(4.4)	7,993	18,177
CAPE MAY	117	3,832	3,949	(5.8)	4,180	3,282	7,462	(8.6)	1,090	2,395
CUMBERLAND	476	11,561	12,037	(5.2)	12,011	13,251	25,262	(4.5)	2,829	7,050
ESSEX	2,328	52,146	54,474	(4.9)	56,278	53,943	110,221	(4.5)	15,338	28,158
GLOUCESTER	336	8,268	8,604	(7.3)	9,549	7,722	17,271	(7.2)	2,285	5,508
HUDSON	1,496	46,377	47,873	(4.6)	50,701	42,141	92,842	(4.4)	18,401	26,783
HUNTERDON	24	1,515	1,539	(8.4)	1,502	973	2,475	(7.6)	565	1,015
MERCER	736	14,296	15,032	(4.8)	14,110	13,935	28,045	(3.9) Δ	4,077	9,417
MIDDLESEX	542	26,106	26,648	(5.9)	27,260	23,817	51,077	(6.2)	12,018	16,610
MONMOUTH	264	15,688	15,952	(7.0)	15,589	13,732	29,321	(7.8)	5,548	9,480
MORRIS	127	7,587	7,714	(4.1) Δ	8,071	4,729	12,800	(5.0)	4,035	5,263
OCEAN	358	17,065	17,423	(11.6) *	20,038	27,932	47,970	(12.8) *	5,403	10,102
PASSAIC	1,474	43,699	45,173	(7.3)	47,486	46,729	94,215	(6.2)	14,250	21,328
SALEM	140	3,613	3,753	(3.9) Δ	3,912	3,691	7,603	(3.3) Δ	913	2,340
SOMERSET	176	5,119	5,295	(8.0)	5,019	4,617	9,636	(9.9)	2,057	3,235
SUSSEX	56	2,022	2,078	(8.7)	2,358	1,416	3,774	(8.2)	760	1,589
UNION	590	20,216	20,806	(6.8)	20,848	20,155	41,003	(5.7)	7,596	11,755
WARREN	124	3,251	3,375	(1.4) Δ	3,630	2,930	6,560	(0.5) Δ	1,035	2,252
NJ TOTAL	12,646	358,605	371,251	(6.4)	388,870	351,724	740,594	(6.4)	125,945	213,705

Total NJ SNAP Recipients
MAY 2018 By County

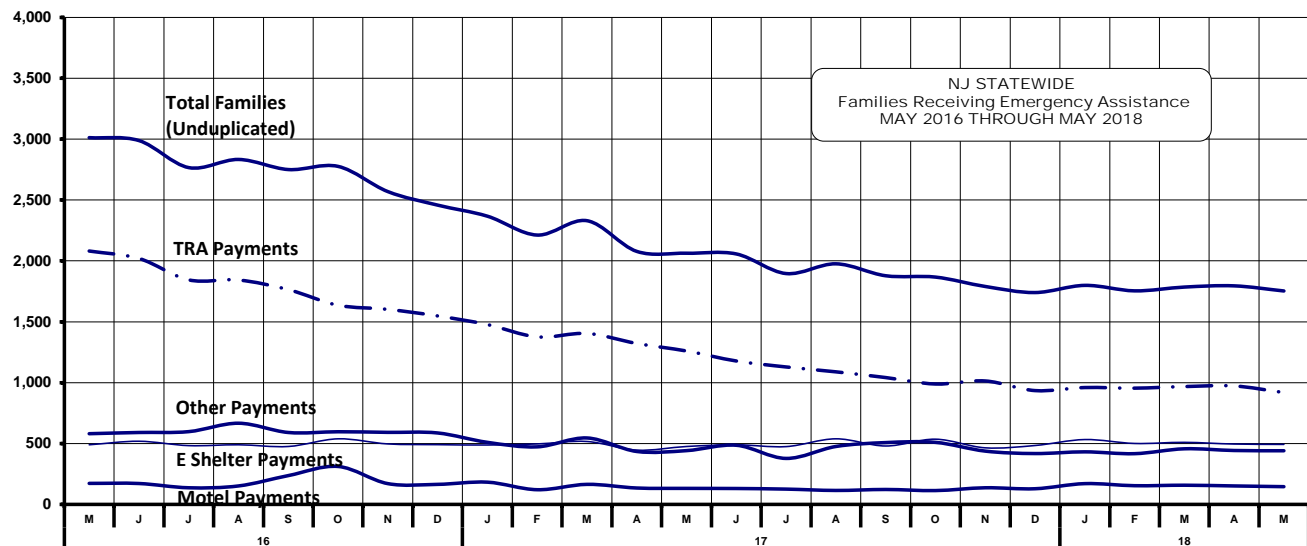
Data is derived from NJ MMIS Shared Data Warehouse
Effective July 2013 this data query source was converted to the SDW

* Age 60+ and People with a disability columns are independent subsets of the total persons. An individual might appear in both columns.

Table 8

TOTAL NUMBER OF ELIGIBLE FAMILIES RECEIVING EMERGENCY ASSISTANCE PAYMENTSEMERGENCY
ASSISTANCE
(STATEWIDE)**MAY 2016 THROUGH MAY 2018 - STATEWIDE**

		TOTAL WFNJ/EA		Temp		Motel		Shelter/Transitional		Other	
		Families (Undupl)	% CHNG (1 YR)	Rent Asst. Payments (Undupl)	% CHNG (1 YR)	Housing Payments (Undupl)	% CHNG (1 YR)	Housing Payments (Undupl)	% CHNG (1 YR)	EA Payments (Undupl)	% CHNG (1 YR)
2016	MAY	3,012	-45.1%	2,081	-47.9%	173	-58.4%	490	-18.2%	581	-50.3%
	JUN	2,988	-43.6%	2,020	-48.3%	172	-49.6%	519	-17.5%	591	-48.6%
	JUL	2,766	-45.8%	1,844	-50.2%	137	-65.6%	483	-14.5%	598	-42.4%
	AUG	2,833	-39.5%	1,843	-45.3%	152	-52.1%	490	-7.9%	667	-37.4%
	SEP	2,750	-38.3%	1,764	-44.2%	237	-33.1%	476	-16.5%	591	-35.8%
	OCT	2,776	-34.8%	1,636	-44.1%	312	-16.8%	539	2.7%	597	-40.8%
	NOV	2,569	-33.2%	1,602	-37.4%	171	-46.4%	497	-15.5%	592	-27.7%
	DEC	2,458	-36.2%	1,548	-41.4%	165	-53.3%	491	-12.5%	587	-30.0%
2016 Average		2,959		1,960		209		506		622	
2017	JAN	2,367	-32.1%	1,477	-38.5%	183	-37.5%	488	-6.7%	510	-23.5%
	FEB	2,212	-35.1%	1,376	-41.1%	121	-53.3%	497	-8.5%	473	-32.0%
	MAR	2,330	-30.8%	1,404	-39.0%	165	-34.3%	517	-1.7%	546	-19.7%
	APR	2,078	-33.0%	1,322	-38.2%	135	-26.6%	446	-9.7%	435	-29.0%
	MAY	2,063	-31.5%	1,260	-39.5%	132	-23.7%	476	-2.9%	442	-23.9%
	JUN	2,057	-31.2%	1,178	-41.7%	131	-23.8%	490	-5.6%	486	-17.8%
	JUL	1,896	-31.5%	1,129	-38.8%	126	-8.0%	475	-1.7%	378	-36.8%
	AUG	1,976	-30.3%	1,089	-40.9%	115	-24.3%	539	10.0%	476	-28.6%
	SEP	1,878	-31.7%	1,042	-40.9%	123	-48.1%	480	0.8%	508	-14.0%
	OCT	1,867	-32.7%	989	-39.5%	114	-63.5%	536	-0.6%	510	-14.6%
	NOV	1,790	-30.3%	1,014	-36.7%	137	-19.9%	465	-6.4%	438	-26.0%
	DEC	1,740	-29.2%	935	-39.6%	129	-21.8%	484	-1.4%	418	-28.8%
2017 Average		2,021		1,185		134		491		468	
2018	JAN	1,799	-24.0%	960	-35.0%	171	-6.6%	533	9.2%	432	-15.3%
	FEB	1,754	-20.7%	955	-30.6%	154	27.3%	501	0.8%	417	-11.8%
	MAR	1,785	-23.4%	968	-31.1%	158	-4.2%	510	-1.4%	457	-16.3%
	APR	1,795	-13.6%	973	-26.4%	152	12.6%	496	11.2%	443	1.8%
	MAY	1,753	-15.0%	919	-27.1%	146	10.6%	493	3.6%	441	-0.2%
2018 AVG to date		1,777		955		156		507		438	



WFNJ/EA data is derived from NJ MMIS Shared Data Warehouse.
Effective July 2013 this data query source was converted to the SDW.

* Effective Feb '11 Transitional Housing Payments were removed from "Other EA Payments" and added to "Shelter Payments."

Table 9
EMERGENCY
ASSISTANCE
(BY COUNTY)

**NUMBER OF TOTAL ELIGIBLE FAMILIES RECEIVING EMERGENCY ASSISTANCE PAYMENTS
BY COUNTY (UNDULICATED CASES) MAY 2018**

County	TOTAL WFNJ/EA Families (Undupl)	% CHNG From May 17	Temp Rent Asst. Payments (Undupl)	Motel Housing Payments (Undupl)	Shelter/Transitional Housing Payments (Undupl)	Other WFNJ/EA Payments (Undupl)	SSI Recipients Receiving EA**
ATLANTIC	99	-13.2%	72	2	2	39	60
BERGEN	57	-18.6%	23	0	27	9	5
BURLINGTON	108	6.9% Δ	27	11	71	13	14
CAMDEN	71	-14.5%	23	13	26	16	17
CAPE MAY	18	-21.7%	8	9	0	2	9
CUMBERLAND	3	200.0% Δ	1	0	2	1	1
ESSEX	347	-18.9%	145	0	183	43	97
GLOUCESTER	27	-20.6%	10	0	8	19	11
HUDSON	197	5.3%	124	2	48	62	16
HUNTERDON	1	-66.7% *	1	0	0	1	0
MERCER	106	-8.6%	56	9	30	50	61
MIDDLESEX	101	4.1%	31	49	9	35	13
MONMOUTH	20	-25.9%	0	1	18	1	4
MORRIS	24	-14.3%	8	12	2	2	17
OCEAN	69	-14.8%	53	13	0	14	4
PASSAIC	331	-25.5%	250	2	35	81	48
SALEM	8	60.0% Δ	0	1	0	7	6
SOMERSET	55	0.0%	26	6	9	22	29
SUSSEX	3	-81.3% *	0	0	2	2	4
UNION	99	-26.7%	56	13	20	21	19
WARREN	9	-40.0% *	5	3	1	1	4
NJ TOTAL	1,753	-15.0%	919	146	493	441	439

Δ= ↑ Caseload %

* = ↓ Caseload %

**SSI-EA includes pay codes 22 and 24, data is derived from NJ Division of Family Development FAMIS Report #FM430-03A

WFNJ/EA data is derived from NJ MMIS Shared Data Warehouse.

Effective July 2013 this data query source was converted to the SDW

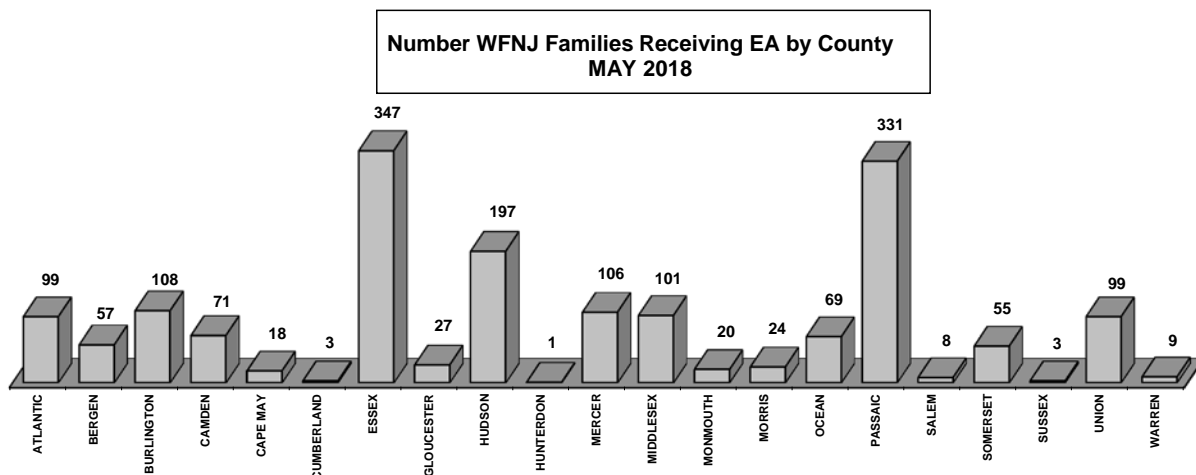
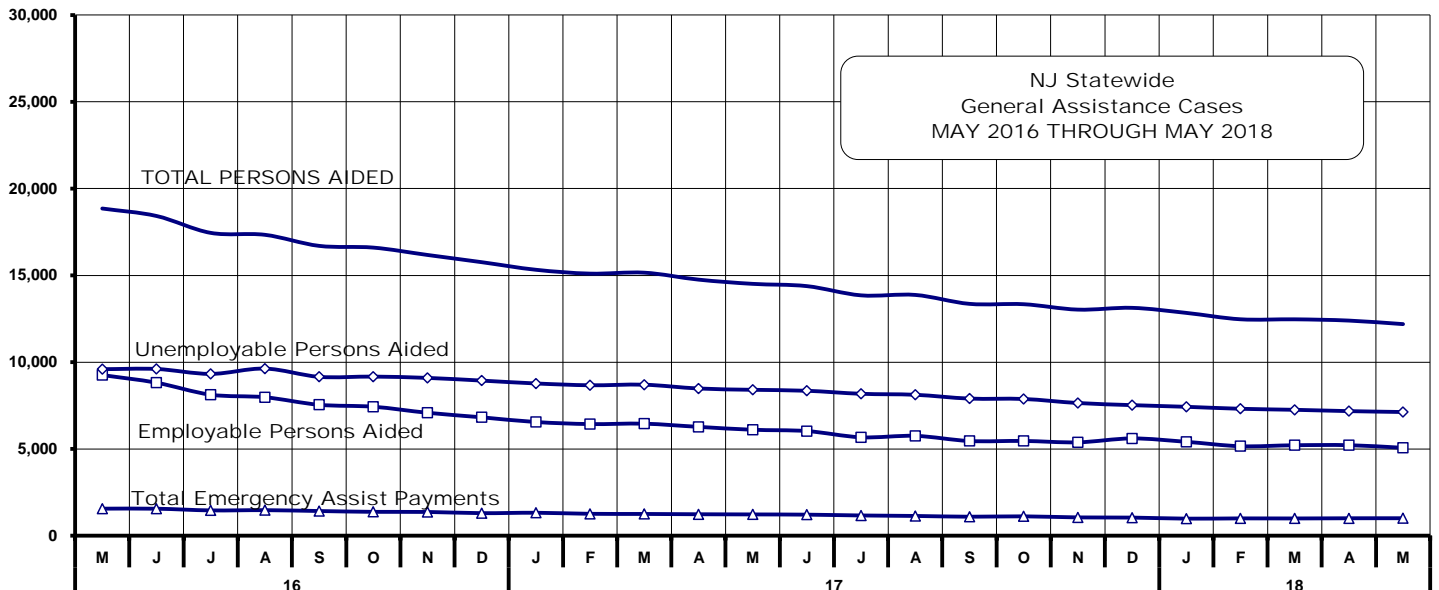


Table 10
GENERAL
ASSISTANCE
PROGRAM

**NUMBER OF EMPLOYABLE AND UNEMPLOYABLE RECIPIENTS
AND EMERGENCY ASSISTANCE PAYMENTS FOR MAY 2018 - STATEWIDE**

MAY 2016 THROUGH MAY 2018

		Total Cases						Emergency Assistance Cases			
		Employable	% Chng (1 Yr)	Unemployable	% Chng (1 Yr)	Total	% Chng (1 Yr)	Temporary Rental Assistance	Other GA-EA	Total	% Chng (1 Yr)
2016	MAY	9,257	-38.7%	9,596	-12.8%	18,853	-27.8%	1,559	1,163	2,722	-43.8%
	JUN	8,816	-39.9%	9,607	-12.2%	18,423	-28.0%	1,556	1,365	2,921	-38.3%
	JUL	8,126	-42.1%	9,324	-13.4%	17,450	-29.6%	1,459	1,236	2,695	-41.5%
	AUG	7,978	-41.1%	9,360	-11.5%	17,338	-28.1%	1,473	1,389	2,862	-30.1%
	SEP	7,545	-42.3%	9,156	-12.2%	16,701	-28.9%	1,423	1,209	2,632	-31.9%
	OCT	7,432	-41.2%	9,169	-11.0%	16,601	-27.7%	1,375	1,427	2,802	-28.5%
	NOV	7,084	-40.5%	9,093	-9.6%	16,177	-26.4%	1,369	1,328	2,697	-21.2%
	DEC	6,823	-42.3%	8,938	-10.2%	15,761	-27.6%	1,300	1,251	2,551	-31.6%
2016 Average		8,779		9,387		18,166		1,534	1,393	2,927	
2017	JAN	6,551	-41.1%	8,773	-8.7%	15,324	-26.1%	1,323	1,190	2,513	-24.4%
	FEB	6,433	-40.1%	8,669	-9.7%	15,102	-25.7%	1,262	1,111	2,373	-28.7%
	MAR	6,455	-38.2%	8,701	-9.2%	15,156	-24.3%	1,254	1,185	2,439	-27.2%
	APR	6,273	-37.1%	8,483	-11.8%	14,756	-24.7%	1,237	1,174	2,411	-25.6%
	MAY	6,105	-34.0%	8,407	-12.4%	14,512	-23.0%	1,227	1,180	2,407	-11.6%
	JUN	6,029	-31.6%	8,352	-13.1%	14,381	-21.9%	1,214	1,192	2,406	-17.6%
	JUL	5,672	-30.2%	8,178	-12.3%	13,850	-20.6%	1,167	1,011	2,178	-19.2%
	AUG	5,754	-27.9%	8,120	-13.2%	13,874	-20.0%	1,139	1,196	2,335	-18.4%
	SEP	5,458	-27.7%	7,902	-13.7%	13,360	-20.0%	1,095	1,039	2,134	-18.9%
	OCT	5,461	-26.5%	7,878	-14.1%	13,339	-19.6%	1,117	1,148	2,265	-19.2%
	NOV	5,382	-24.0%	7,646	-15.9%	13,028	-19.5%	1,055	936	1,991	-26.2%
	DEC	5,606	-17.8%	7,524	-15.8%	13,130	-16.7%	1,045	1,059	2,104	-17.5%
2017 Average		5,932		8,219		14,151		1,178	1,118	2,296	
2018	JAN	5,411	-17.4%	7,428	-15.3%	12,839	-16.2%	984	1,113	2,097	-16.6%
	FEB	5,157	-19.8%	7,314	-15.6%	12,471	-17.4%	999	1,069	2,068	-12.9%
	MAR	5,214	-19.2%	7,255	-16.6%	12,469	-17.7%	995	1,055	2,050	-15.9%
	APR	5,217	-16.8%	7,179	-15.4%	12,396	-16.0%	1,006	1,210	2,216	-8.1%
	MAY	5,065	-17.0%	7,127	-15.2%	12,192	-16.0%	1,008	1,151	2,159	-10.3%
2018 AVG to date		5,213		7,261		12,473		998	1,120	2,118	



Source: NJ Division of Family Development, GA Fiscal Unit

TABLE 11

GENERAL
ASSISTANCE
PROGRAM**EMPLOYABLE AND UNEMPLOYABLE CASES
AND EMERGENCY ASSISTANCE CASES RECEIVING PAYMENTS BY COUNTY**

MAY 2018

County	Total Cases						Emergency Assistance Cases			
	Employable	% Chng (From May 17)	Unemployable	% Chng (From May 17)	Total	% Chng (From May 17)	Temporary Rental Assist.	Other GA-EA	Total	% Chng (From May 17)
ATLANTIC	625	-17.3%	347	-19.3%	972	-18.0%	138	36	174	-18.7%
BERGEN	259	-34.8%	519	-16.0%	778	-23.3%	124	34	158	-11.2%
BURLINGTON	259	-15.9%	424	-26.6%	683	-22.9%	45	146	191	11.0%
CAMDEN	591	-3.4%	797	-19.0%	1,388	-13.0%	54	110	164	-3.5%
CAPE MAY	75	50.0%	100	-5.7%	175	12.2% Δ	24	51	75	13.6%
CUMBERLAND	197	-24.8%	300	-14.0%	497	-18.7%	1	7	8	-70.4% *
ESSEX	792	-14.6%	490	-19.8%	1,282	-16.6%	43	150	193	-20.6%
GLOUCESTER	163	-23.8%	261	-18.9%	424	-20.9%	18	27	45	-32.8% *
HUDSON	433	-24.0%	972	-13.8%	1,405	-17.3%	86	26	112	-34.5% *
HUNTERDON	50	8.7%	69	4.5%	119	6.3% Δ	18	18	36	9.1%
MERCER	220	-6.4%	502	-2.1%	722	-3.5%	53	41	94	-7.8%
MIDDLESEX	232	-25.9%	394	11.3%	626	-6.1%	59	145	204	13.3%
MONMOUTH	63	5.0%	174	-7.0%	237	-4.0%	0	18	18	63.6% Δ
MORRIS	155	25.0%	236	-12.9%	391	-1.0%	54	47	101	-27.3%
OCEAN	201	4.7%	315	-3.1%	516	-0.2%	71	69	140	20.7% Δ
PASSAIC	199	-48.2%	611	-15.7%	810	-27.0% *	87	37	124	-21.0%
SALEM	36	-5.3%	87	-28.7%	123	-23.1%	13	4	17	30.8% Δ
SOMERSET	83	29.7%	69	-19.8%	152	1.3% Δ	26	27	53	8.2%
SUSSEX	54	-46.5%	44	18.9%	98	-29.0% *	4	29	33	-5.7%
UNION	287	-19.4%	308	-34.2%	595	-27.8% *	83	100	183	-21.5%
WARREN	91	-5.2%	108	-15.0%	199	-10.8%	7	29	36	16.1%
NJ TOTAL	5,065	-17.0%	7,127	-15.2%	12,192	-16.0%	1,008	1,151	2,159	-10.3%

Δ = ↑ Caseload %

* = ↓ Caseload %

Source: NJ Division of Family Development, GA Fiscal Unit

TABLE 12
OFFICE OF CHILD
SUPPORT
SERVICES

OFFICE OF CHILD SUPPORT SERVICES

Quarterly Performance Report
State Summary
TITLE IV-D SOURCE COLLECTION REPORT
Comparison of Quarter-2 (FFY 17 vs. FFY 18)

COLLECTION SOURCE	TOTAL 1/1/2017 - 3/31/2017	% OF TOTAL COLLECTIONS	TOTAL 1/1/2018 - 3/31/2018	% OF TOTAL COLLECTIONS	DOLLAR CHANGE	% CHANGE
FEDERAL TAX	\$ 22,100,794	6.65%	\$ 19,333,980	6.14%	\$ (2,766,814)	-12.52%
STATE TAX	\$ 256,524	0.08%	\$ 267,391	0.08%	\$ 10,867	4.24%
UIB	\$ 9,163,308	2.76%	\$ 8,964,407	2.85%	\$ (198,901)	-2.17%
INC WITHHOLD	\$ 220,252,048	66.27%	\$ 208,504,460	66.22%	\$ (11,747,588)	-5.33%
FROM OTHER STATES	\$ 12,464,744	3.75%	\$ 11,903,534	3.78%	\$ (561,210)	-4.50%
ADMIN ENFORCEMENT	\$ 2,843,836	0.86%	\$ 3,732,174	1.19%	\$ 888,337	31.24%
OTHER	\$ 65,292,583	19.64%	\$ 62,141,917	19.74%	\$ (3,150,666)	-4.83%
TOTAL COLLECTIONS*	\$ 332,373,837	100%	\$ 314,847,863	100%	\$ (17,525,975)	-5.27%
DISTRIBUTED COLLECTIONS**	\$ 296,938,727		\$ 277,507,087		\$ (19,431,640)	-6.54%

* Includes collections on both current support and arrears.

** Includes collections on both current support and arrears; also includes money sent to other states.

SOURCE: NJKiDS (Based on Federal Quarterly Report of Collections - OCSE-34A except Distributed Collections)
Distributed Collections obtained from Federal Data Report - OCSE-157, which is reported annually to Congress and used in the calculation of incentive dollars earned by each state.

TABLE 13

OFFICE OF CHILD
SUPPORT SERVICES

OFFICE OF CHILD SUPPORT SERVICES

State Summary

TITLE IV-D PATERNITY ESTABLISHMENT REPORT

Comparison of May (FFY 17 vs. FFY 18)

County Office	MAY 2017			MAY 2018			Increase or Decrease (-) from FFY 2017 to FFY 2018
	Total Children Born Out of Wedlock*	Number of Paternities Established	Percent of Paternities Established	Total Children Born Out of Wedlock*	Number of Paternities Established	Percent of Paternities Established	
Atlantic	7,771	7,599	97.8%	7,263	7,160	98.6%	0.8%
Bergen	3,931	3,882	98.8%	3,566	3,515	98.6%	-0.2%
Burlington	6,498	6,271	96.5%	5,999	5,788	96.5%	0.0%
Camden	20,663	19,488	94.3%	18,684	17,896	95.8%	1.5%
Cape May	1,595	1,578	98.9%	1,462	1,446	98.9%	0.0%
Cumberland	7,902	7,814	98.9%	7,332	7,252	98.9%	0.0%
Essex	33,943	31,294	92.2%	30,082	28,085	93.4%	1.2%
Gloucester	5,495	5,391	98.1%	5,132	5,046	98.3%	0.2%
Hudson	13,834	12,961	93.7%	12,344	11,568	93.7%	0.0%
Hunterdon	397	389	98.0%	351	345	98.3%	0.3%
Mercer	9,114	8,738	95.9%	8,368	8,031	96.0%	0.1%
Middlesex	8,314	8,044	96.8%	7,516	7,278	96.8%	0.1%
Monmouth	6,858	6,548	95.5%	6,307	6,047	95.9%	0.4%
Morris	1,738	1,702	97.9%	1,528	1,511	98.9%	1.0%
Ocean	5,918	5,740	97.0%	5,486	5,332	97.2%	0.2%
Passaic	14,415	13,358	92.7%	13,285	12,372	93.1%	0.5%
Salem	2,913	2,811	96.5%	2,916	2,815	96.5%	0.0%
Somerset	1,984	1,908	96.2%	1,795	1,734	96.6%	0.4%
Sussex	744	737	99.1%	674	668	99.1%	0.1%
Union	12,524	11,708	93.5%	11,328	10,727	94.7%	1.2%
Warren	1,208	1,190	98.5%	1,102	1,094	99.3%	0.8%
NJ TOTALS	167,759	159,151	94.9%	152,520	145,710	95.5%	0.7%

SOURCE: NJKiDS (Based on Federal Performance Measures - OCSE-157)

* Information on Out of Wedlock Births obtained from NJ Bureau of Vital Statistics

TABLE 14

OFFICE OF CHILD
SUPPORT SERVICES

OFFICE OF CHILD SUPPORT SERVICES

State Summary

TITLE IV-D REPORT OF CASES WITH ORDERS

Comparison of May (FFY 17 vs. FFY 18)

County Office	May 2017			May 2018			Increase or Decrease (-) from FFY 2017 to FFY 2018
	TOTAL CASES	CASES WITH ORDERS	% OF CASES WITH ORDERS	TOTAL CASES	CASES WITH ORDERS	% OF CASES WITH ORDERS	
Atlantic	13,709	12,025	87.7%	13,085	11,372	86.9%	-0.8%
Bergen	13,228	12,674	95.8%	12,304	11,880	96.6%	0.7%
Burlington	15,406	13,616	88.4%	14,698	12,911	87.8%	-0.5%
Camden	34,385	28,415	82.6%	32,000	27,227	85.1%	2.4%
Cape May	3,535	3,193	90.3%	3,287	2,996	91.1%	0.8%
Cumberland	13,129	12,387	94.3%	12,521	11,868	94.8%	0.4%
Essex	51,949	40,233	77.4%	47,246	37,462	79.3%	1.8%
Gloucester	11,681	11,053	94.6%	11,094	10,602	95.6%	0.9%
Hudson	26,048	20,790	79.8%	23,726	18,956	79.9%	0.1%
Hunterdon	1,678	1,622	96.7%	1,522	1,467	96.4%	-0.3%
Mercer	16,212	14,208	87.6%	15,097	13,316	88.2%	0.6%
Middlesex	19,874	18,453	92.8%	18,487	17,124	92.6%	-0.2%
Monmouth	16,087	15,179	94.4%	15,268	14,338	93.9%	-0.4%
Morris	6,663	6,401	96.1%	6,157	5,962	96.8%	0.8%
Ocean	16,479	15,657	95.0%	15,514	14,842	95.7%	0.7%
Passaic	25,889	19,012	73.4%	24,571	17,967	73.1%	-0.3%
Salem	4,742	4,551	96.0%	4,583	4,390	95.8%	-0.2%
Somerset	5,714	5,213	91.2%	5,181	4,881	94.2%	3.0%
Sussex	2,996	2,872	95.9%	2,859	2,746	96.0%	0.2%
Union	21,118	19,325	91.5%	19,227	17,896	93.1%	1.6%
Warren	3,358	3,050	90.8%	3,135	2,885	92.0%	1.2%
NJ TOTALS	323,880	279,929	86.4%	301,562	263,088	87.2%	0.8%

SOURCE: NJKiDS (Based on Federal Performance Measures - OCSE-157)

TABLE 15

OFFICE OF CHILD
SUPPORT SERVICES**OFFICE OF CHILD SUPPORT SERVICES**

State Summary

TITLE IV-D COLLECTIONS ON CURRENT SUPPORT**Comparison of May (FFY 17 vs. FFY 18)**

County Office	May 2017			May 2018			Increase or Decrease (-) from FFY 2017 to FFY 2018
	Total Current Support Due	Total Current Support Distributed	Total Collection Rate	Total Current Support Due	Total Current Support Distributed	Total Collection Rate	
Atlantic	\$4,180,461	\$2,788,923	66.7%	\$3,905,002	\$2,637,039	67.5%	0.8%
Bergen	\$9,460,376	\$7,269,364	76.8%	\$8,856,881	\$6,845,379	77.3%	0.4%
Burlington	\$6,652,773	\$4,721,504	71.0%	\$6,178,236	\$4,415,715	71.5%	0.5%
Camden	\$8,764,854	\$5,370,918	61.3%	\$8,375,907	\$5,095,051	60.8%	-0.4%
Cape May	\$1,179,378	\$834,992	70.8%	\$1,147,231	\$818,744	71.4%	0.6%
Cumberland	\$3,277,847	\$2,020,945	61.7%	\$3,163,287	\$1,910,500	60.4%	-1.3%
Essex	\$13,025,268	\$7,686,456	59.0%	\$11,397,080	\$6,924,302	60.8%	1.7%
Gloucester	\$4,728,428	\$3,167,636	67.0%	\$4,453,975	\$2,985,865	67.0%	0.0%
Hudson	\$8,200,902	\$5,589,005	68.2%	\$7,415,639	\$5,138,888	69.3%	1.1%
Hunterdon	\$1,465,262	\$1,195,440	81.6%	\$1,313,335	\$1,063,857	81.0%	-0.6%
Mercer	\$4,968,179	\$3,103,540	62.5%	\$4,430,234	\$2,810,523	63.4%	1.0%
Middlesex	\$9,096,501	\$6,220,621	68.4%	\$8,184,485	\$5,752,881	70.3%	1.9%
Monmouth	\$8,442,293	\$6,141,870	72.8%	\$7,737,282	\$5,673,867	73.3%	0.6%
Morris	\$5,049,961	\$3,735,680	74.0%	\$4,733,061	\$3,492,837	73.8%	-0.2%
Ocean	\$7,692,928	\$5,631,003	73.2%	\$7,092,506	\$5,199,576	73.3%	0.1%
Passaic	\$7,565,178	\$4,832,411	63.9%	\$6,900,939	\$4,525,141	65.6%	1.7%
Salem	\$1,290,985	\$798,280	61.8%	\$1,159,302	\$704,182	60.7%	-1.1%
Somerset	\$3,613,346	\$2,849,663	78.9%	\$3,341,113	\$2,656,503	79.5%	0.6%
Sussex	\$2,064,983	\$1,597,540	77.4%	\$1,915,836	\$1,484,494	77.5%	0.1%
Union	\$7,844,695	\$5,237,253	66.8%	\$7,125,007	\$4,994,494	70.1%	3.3%
Warren	\$1,515,775	\$1,125,234	74.2%	\$1,407,200	\$1,054,796	75.0%	0.7%
NJ TOTALS	\$120,080,374	\$81,918,276	68.2%	\$110,233,534	\$76,184,633	69.1%	0.9%

SOURCE: NJKiDS (Based on Federal Performance Measures - OCSE-157)

TABLE 16

OFFICE OF CHILD
SUPPORT SERVICES

OFFICE OF CHILD SUPPORT SERVICES

State Summary

TITLE IV-D CASES ARREARS COLLECTION REPORT

Comparison of May (FFY 17 vs. FFY 18)

County Office	May 2017			May 2018			Increase or Decrease (-) from FFY 2017 to FFY 2018
	Total Cases with Arrears	Total Amount Collected	Average Arrears Collection per Case	Total Cases with Arrears	Total Amount Collected	Average Arrears Collection per Case	
Atlantic	8,096	\$791,425	\$97.76	7,515	\$792,429	\$105.45	\$7.69
Bergen	8,281	\$1,243,448	\$150.16	7,696	\$1,412,570	\$183.55	\$33.39
Burlington	9,121	\$916,789	\$100.51	8,514	\$1,278,430	\$150.16	\$49.64
Camden	18,390	\$1,714,179	\$93.21	17,601	\$1,965,053	\$111.64	\$18.43
Cape May	2,215	\$257,436	\$116.22	2,096	\$272,336	\$129.93	\$13.71
Cumberland	8,331	\$708,158	\$85.00	7,827	\$712,703	\$91.06	\$6.05
Essex	26,635	\$2,509,382	\$94.21	23,625	\$2,919,925	\$123.59	\$29.38
Gloucester	7,660	\$814,641	\$106.35	7,094	\$886,694	\$124.99	\$18.64
Hudson	14,530	\$1,462,293	\$100.64	12,856	\$1,704,551	\$132.59	\$31.95
Hunterdon	1,003	\$140,119	\$139.70	903	\$214,060	\$237.05	\$97.35
Mercer	9,432	\$920,960	\$97.64	8,815	\$1,032,072	\$117.08	\$19.44
Middlesex	12,505	\$1,421,082	\$113.64	11,433	\$1,664,971	\$145.63	\$31.99
Monmouth	10,016	\$1,315,262	\$131.32	9,233	\$1,458,459	\$157.96	\$26.65
Morris	4,324	\$633,473	\$146.50	3,999	\$750,666	\$187.71	\$41.21
Ocean	10,481	\$1,346,531	\$128.47	9,714	\$1,389,074	\$143.00	\$14.52
Passaic	13,054	\$1,450,720	\$111.13	11,941	\$1,561,723	\$130.79	\$19.65
Salem	2,953	\$197,575	\$66.91	2,697	\$276,013	\$102.34	\$35.43
Somerset	3,500	\$503,969	\$143.99	3,284	\$566,921	\$172.63	\$28.64
Sussex	2,018	\$316,801	\$156.99	1,836	\$304,570	\$165.89	\$8.90
Union	12,977	\$1,409,314	\$108.60	11,841	\$1,770,064	\$149.49	\$40.89
Warren	2,029	\$242,100	\$119.32	1,929	\$256,568	\$133.01	\$13.69
NJ TOTALS	187,551	\$20,315,657	\$108.32	172,449	\$23,189,852	\$134.47	\$26.15

SOURCE: OCSE-157 Child Support Enforcement Annual Data Report

Table 17
WFNJ**WORK FIRST NEW JERSEY STATISTICAL SUMMARY****MAY 2018**

COUNTY	EMPLOYMENT DIRECTED ACTIVITIES			EMPLOYED OPEN (WFNJ RECIPIENT)	SUPPORT SERVICES ON ACTIVE CASE		CLOSED FOR EMPLOYMENT THIS MONTH	POST ASSISTANCE CHILD CARE
	CWEP	ALL	JOB		CHILD CARE	TRAINING REL. EXPENSES		
		OTHER	SEARCH					
		TRAINING						
ATLANTIC	87	94	25	99	47	207	11	56
BERGEN	39	4	44	18	29	25	7	52
BURLINGTON	61	25	73	66	66	62	18	121
CAMDEN	229	143	13	202	176	194	39	200
CAPE MAY	7	6	5	21	6	15	0	17
CUMBERLAND	67	44	24	32	24	63	5	47
ESSEX	413	480	22	320	330	465	54	484
GLOUCESTER	27	25	2	30	10	16	7	37
HUDSON	134	245	20	130	187	349	23	264
HUNTERDON	1	0	2	2	3	0	3	5
MERCER	127	66	73	98	107	81	11	112
MIDDLESEX	22	23	60	55	37	40	17	83
MONMOUTH	14	37	27	33	51	29	9	54
MORRIS	9	3	14	13	13	16	2	15
OCEAN	6	113	0	15	17	28	6	80
PASSAIC	262	177	18	93	149	174	27	137
SALEM	4	11	7	8	8	10	2	8
SOMERSET	42	14	17	34	22	25	9	36
SUSSEX	8	0	3	5	5	3	1	5
UNION	214	89	4	47	66	98	14	94
WARREN	13	3	5	25	16	4	5	22
STATE	1,786	1,602	458	1,346	1,369	1,904	270	1,929

Data is derived from NJ Division of Family Development's FAMIS Reports RM064-01 & RM703-51, AdHoc Reports 5549 & 5598 and SDW Report WR00022WZ_CC

**DIVISION OF FAMILY DEVELOPMENT CURRENT PROGRAM STATISTICS
MAY 2018**

ACRONYMS

EMERGENCY ASSISTANCE (EA) - Payments to those eligible for WFNJ/TANF or WFNJ/GA, authorized during the 30 consecutive days immediately following the emergency (defined as a substantial loss of shelter, food, clothing, or household furnishings by fire, flood or other similar disaster) or if eligible individual or family is in an imminent or actual state of homelessness.

NJ SNAP - Formerly the Food Stamp Program, now known as **NJ SNAP** (NJ Supplemental Nutrition Assistance Program) authorized by Congress as a nutritional supplement program to provide low income households with more food of greater variety and better nutrition. Program eligibility is based on household income, resources, and expenses for medical, shelter, and dependent care. CWA staff refers certain recipients to the New Jersey Department of Labor for participation in the Food Stamp Employment and Training Program.

FAMIS: Family Assistance Management Information System

GAAS: General Assistance Automated System

NJKIDS: New Jersey Kids Deserve Support (Child Support Information Management System)

NJ MMIS SHARED DATA WAREHOUSE: The Shared Data Warehouse (SDW) is the repository for New Jersey's DFD and Medicaid data. Since 2003, OptumInsight has administered the SDW and provided access to the data through a reporting tool known as Business Objects.

OMEGA: Online Management of Economic Goal Achievement

SSI-EA: Supplemental Security Income-Emergency Assistance

WFNJ: Work First New Jersey - Fully implemented July 1, 1997, this is New Jersey's welfare reform program which responds to the requirements of the Federal Personal Responsibility and Work Opportunity Reconciliation Act (**PRWORA**) of 1996. PRWORA established Temporary Assistance for Needy Families (**TANF**) as the replacement for AFDC cash assistance. WFNJ includes two segments, **WFNJ/TANF** for families with children, and **WFNJ/GA** (General Assistance) for single adults and couples without dependent children. WFNJ emphasizes achieving self-sufficiency and limits lifetime receipt of financial assistance to a total of five years.

**DIVISION OF FAMILY DEVELOPMENT CURRENT PROGRAM STATISTICS
MAY 2018**

EXPLANATORY NOTES

The Department of Human Services Division of Family Development provides basic income and an opportunity to achieve self-sufficiency for individuals and families served by the Division's programs. The Division provides leadership, direction and supervision to those public agencies responsible for administering those programs and plans for and develops policies to promote self-sufficiency.

WFNJ Statistical Summary (Table 17)

Employment Directed Activities (EDA) - From Activities Summary Report (OMEGA report # RM064). Unduplicated count of persons participating in Community Work Experience Program (CWEP), All Other Training, or Job Search.

Number of Persons Employed This Month, Still Receiving TANF Individuals with open "empl" activity on OMEGA. Ad hoc report.

Participants Receiving Child Care Services - From Issuance Disbursement Summary (OMEGA report # RM703). Total number of active participants who show receipt of **Child Care**.

Number of Persons Closed on FAMIS Due to Employment - From FAMIS report #5549-RM-2.

Post TANF and Receiving Child Care - Persons no longer in receipt of TANF but still receiving child care. From Share Data Warehouse Child Care case count based on Child Care payments (SDW report WR00022WZ_CC).