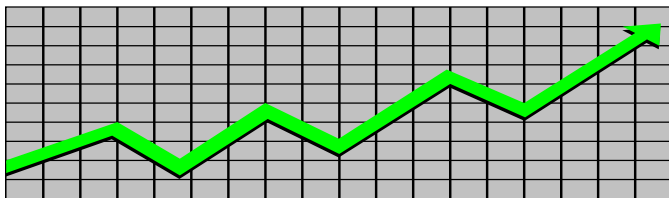


State of New Jersey
Department of Human Services
Division of Family Development

CURRENT PROGRAM STATISTICS



November 2014
Jeanette Page-Hawkins, Director

**DIVISION OF FAMILY DEVELOPMENT CURRENT PROGRAM STATISTICS
NOVEMBER 2014**

TABLE OF CONTENTS

HIGHLIGHTS:

| | |
|--|------------|
| WFNJ/TANF..... | ii |
| NJ SNAP..... | ii |
| EMERGENCY ASSISTANCE..... | ii |
| GENERAL ASSISTANCE..... | iii |
| GA Emergency Assistance..... | iii |
| GA Program..... | iii |
| CHILD SUPPORT SERVICES..... | iii |
| WORK FIRST NEW JERSEY (WFNJ)..... | iii |
| STATISTICS- BY STATE & COUNTY..... | 1 |
| Table 1: WFNJ/TANF Families & Persons (NJ Statewide) November 2012 to 2014..... | 1 |
| Table 2: WFNJ/TANF Families (by County)- November 2014..... | 2 |
| Table 2B: WFNJ/TANF Persons, Adults, & Children (by County)- November 2014..... | 3 |
| Table 3: TANF Work Participation Rates Over 12 Month Period (by County)- November 2014.... | 4 |
| Table 4: TANF Work Participation Rates Over 12 Month Period (NJ Statewide) November 2014. | 5 |
| Table 5: NJ SNAP Households/Persons (NJ Statewide) November 2012 to 2014..... | 6 |
| Table 6: NJ SNAP Recipient Trends (NJ Statewide) November 2012 to 2014..... | 7 |
| Table 7: NJ SNAP Households/Persons (by County)- November 2014..... | 8 |
| Table 8: Emergency Assistance Program (NJ Statewide) November 2012 to 2014..... | 9 |
| Table 9: Emergency Assistance Program (by County)- November 2014..... | 10 |
| Table 10: General Assistance Program (NJ Statewide) November 2012 to 2014..... | 11 |
| Table 11: General Assistance Program (by County)- November 2014..... | 12 |
| Table 12: Child Support Services Distributions (NJ Statewide) FFY 2014..... | 13 |
| Table 13: Child Support Services Paternities Established- November 2014..... | 14 |
| Table 14: Child Support Services Cases With Orders- November 2014..... | 15 |
| Table 15: Child Support Services Collections On Current Support- November 2014..... | 16 |
| Table 16: Child Support Services Cases With Payments On Arrears- November 2014..... | 17 |
| Table 17: WFNJ Statistical Summary- November 2014..... | 18 |
| ACRONYMS..... | 19 |
| EXPLANATORY NOTES..... | 20 |
| WFNJ Statistical Summary (Table 17)..... | 20 |

DIVISION OF FAMILY DEVELOPMENT CURRENT PROGRAM STATISTICS NOVEMBER 2014

Each month the Division of Family Development publishes its program statistics for: WFNJ/TANF, NJ SNAP, Emergency Assistance, General Assistance, and Child Support Services. When possible, information is provided separately for children and adults. Many tables also provide trend data with information broken down by county for readers to consider. This report is compiled and prepared by The Bureau of Research & Reporting.

WFNJ/TANF

- As of the end of November, the TANF caseload had decreased by 2,350 cases, from 35,269 in November 2013 to 32,919 in November 2014, a decrease of 6.7%.
- The counties where the family caseload percentage increased since November 2013 were Burlington (19.3%), Morris (6.9%), and Middlesex (5.1%).
- The counties with caseloads that decreased the most since November 2013 were Hunterdon (-20.0%), Salem (-22.3%), and Monmouth (-23.0%).
- Of the WFNJ/TANF cases, 7,510 or 22.8% were child-only in November 2014.
- The counties with the most child-only cases were Essex (1,150), Camden (1,036), and Hudson (844).
- Essex (17,871), Hudson (9,491), Passaic (9,067), Camden (8,722), and Atlantic (5,562) counties had the greatest number of persons receiving TANF in November 2014.

NJ SNAP (formerly FOOD STAMPS)

- In November 2014, there were 455,123 households receiving NJ SNAP benefits. The number of NJ SNAP households increased by 21,369, or 4.9%, since November 2013.
- There were 907,335 persons receiving NJ SNAP benefits as of November 2014, an increase of 36,745 or 4.2% since November 2013.
- The three counties having the highest caseload increase since November 2013 are Union (14.4%), Burlington (11.9%), and Monmouth (11.5%).

EMERGENCY ASSISTANCE

- There were 6,108 families receiving Emergency Assistance (EA) in November 2014, a decrease of 248 or 3.9% since November 2013.
- In November 2014, EA payments were made for 1,555 SSI recipients.

**DIVISION OF FAMILY DEVELOPMENT CURRENT PROGRAM STATISTICS
NOVEMBER 2014**

GENERAL ASSISTANCE

GA Emergency Assistance

- There were 4,629 Emergency Assistance payments made to GA cases in November 2014, a decrease of 396 or 7.9% since November 2013.
- The three counties that show an annual percent increase in emergency assistance payments are Union (86.5%), Hudson (39.5%), and Salem (31.6%).

GA Program

- The total numbers of cases receiving GA has decreased from 33,523 to 29,354 since November 2013, a decrease of 12.4%.
- There were 17,357 Employable GA and 11,997 Unemployable GA cases in November 2014.
- Bergen (13.9%), Burlington (11.2%) and Atlantic (3.9%) counties showed the highest percent increase for GA cases since November 2013.
- In November 2014, GA cases showed a 2.7 percent decrease since October 2014.

CHILD SUPPORT SERVICES (Quarterly Report)

- The total collection for the Child Support Services Program was about \$316 million from July 2014 to September 2014, a decrease of 0.4 percent over the same period for FFY 2013.
- Total distributions decreased 0.6% from September 2013.

WORK FIRST NEW JERSEY (WFNJ)

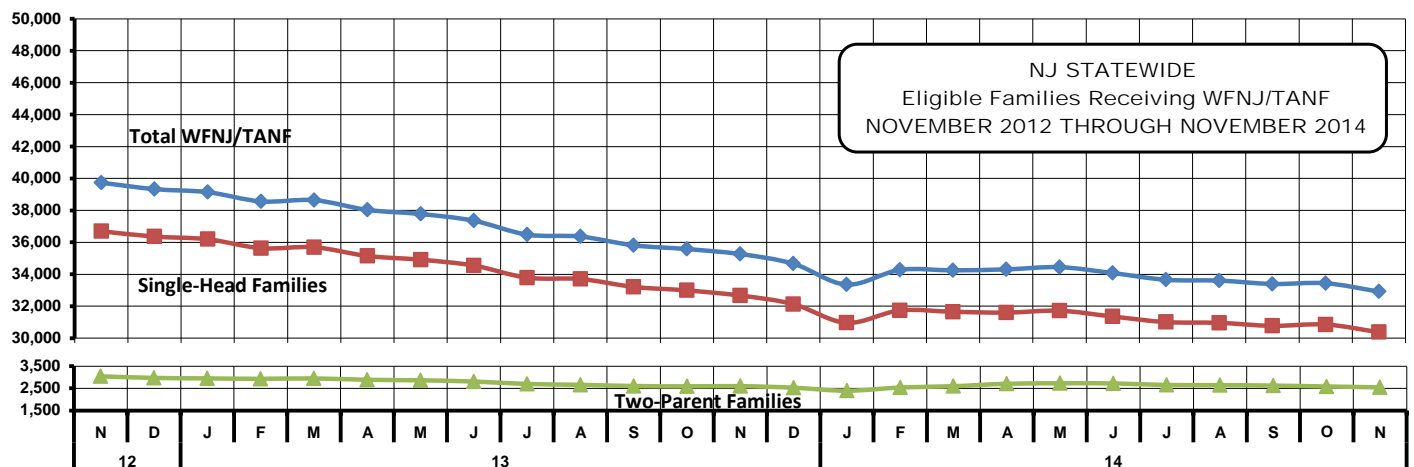
- During the report month of November 2014, there were 3,995 families in which at least one member was employed and an additional 664 families whose WFNJ assistance cases were closed due to employment - related earnings.
- The three counties with the greatest number of employed active WFNJ recipients were: Essex (1,034), Hudson (445), and Camden (377).
- There were 3,061 former TANF cases receiving post-TANF support in the form of child care assistance.

TABLE 1: WFNJ/TANF PROGRAM

STATEWIDE NUMBER OF APPLICATIONS AND TERMINATIONS DURING NOVEMBER 2014

NUMBER OF ELIGIBLE FAMILIES & PERSONS RECEIVING WFNJ/TANF FOR NOVEMBER 2014

| NOVEMBER 2012 THROUGH NOVEMBER 2014 | | | | | | | | | | | | |
|-------------------------------------|-----|----------------|-----------------|-----------------------|---------------------------------|-----------------------|--------------------------------|------------------|------------------|------------------|--------|----------|
| | | Cases Added | Cases Closed | Child-Only Cases ‡ | Total Singl-Head Families | 2- Parent Families | Total WFNJ/TANF Families | %CHNG (1 Yr.) | Total Persons | %CHNG (1 Yr.) | Adults | Children |
| 2012 | NOV | 3,120 | 3,106 | 8,302 | 36,693 | 3,042 | 39,735 | (3.6) | 102,806 | (3.6) | 34,475 | 68,331 |
| | DEC | 2,495 | 2,896 | 8,312 | 36,364 | 2,970 | 39,334 | (5.1) | 101,805 | (4.9) | 33,992 | 67,813 |
| 2012 Average | | 3,081 | 3,255 | 8,645 | 37,037 | 2,956 | 39,993 | | 103,202 | | 34,305 | 68,897 |
| 2013 | JAN | 2,735 | 2,926 | 8,360 | 36,195 | 2,948 | 39,143 | (4.4) | 101,213 | (4.3) | 33,731 | 67,482 |
| | FEB | 2,818 | 3,396 | 8,295 | 35,635 | 2,930 | 38,565 | (5.1) | 99,774 | (4.7) | 33,200 | 66,574 |
| | MAR | 2,925 | 2,848 | 8,395 | 35,695 | 2,947 | 38,642 | (4.5) | 99,697 | (4.3) | 33,194 | 66,503 |
| | APR | 2,727 | 3,336 | 8,262 | 35,148 | 2,885 | 38,033 | (5.0) | 98,300 | (4.7) | 32,656 | 65,644 |
| | MAY | 2,968 | 3,226 | 8,271 | 34,913 | 2,862 | 37,775 | (5.7) | 97,596 | (5.5) | 32,366 | 65,230 |
| | JUN | 2,737 | 3,158 | 8,241 | 34,547 | 2,807 | 37,354 | (6.8) | 96,299 | (6.5) | 31,920 | 64,379 |
| | JUL | 2,465 | 3,304 | 8,075 | 33,787 | 2,697 | 36,484 | (7.2) | 94,197 | (6.9) | 31,106 | 63,091 |
| | AUG | 2,885 | 3,127 | 8,059 | 33,707 | 2,658 | 36,365 | (8.8) | 93,862 | (8.6) | 30,964 | 62,898 |
| | SEP | 2,580 | 3,130 | 7,912 | 33,212 | 2,604 | 35,816 | (10.1) | 92,584 | (10.1) | 30,508 | 62,076 |
| | OCT | 2,954 | 3,321 | 7,923 | 32,992 | 2,589 | 35,581 | (10.4) | 91,979 | (10.6) | 30,247 | 61,732 |
| | NOV | 2,691 | 3,096 | 7,833 | 32,670 | 2,599 | 35,269 | (11.2) | 91,253 | (11.2) | 30,035 | 61,218 |
| | DEC | 2,419 | 3,026 | 7,813 | 32,134 | 2,528 | 34,662 | (11.9) | 89,496 | (12.1) | 29,377 | 60,119 |
| 2013 Average | | 2,742 | 3,158 | 8,120 | 34,220 | 2,755 | 36,974 | | 95,521 | | 31,609 | 63,912 |
| 2014 | JAN | 2,484 | 3,869 | 7,833 | 30,964 | 2,391 | 33,355 | (14.8) | 85,857 | (15.2) | 27,913 | 57,944 |
| | FEB | 3,248 | 2,114 | 7,817 | 31,740 | 2,536 | 34,276 | (11.1) | 88,563 | (11.2) | 28,995 | 59,568 |
| | MAR | 2,873 | 3,074 | 7,848 | 31,652 | 2,596 | 34,248 | (11.4) | 88,489 | (11.2) | 28,996 | 59,493 |
| | APR | 3,066 | 3,183 | 7,820 | 31,603 | 2,705 | 34,308 | (9.8) | 88,616 | (9.9) | 29,193 | 59,423 |
| | MAY | 2,874 | 2,883 | 7,874 | 31,719 | 2,727 | 34,446 | (8.8) | 88,847 | (9.0) | 29,299 | 59,548 |
| | JUN | 2,766 | 3,139 | 7,743 | 31,356 | 2,722 | 34,078 | (8.8) | 88,005 | (8.6) | 29,057 | 58,948 |
| | JUL | 2,745 | 3,362 | 7,680 | 31,008 | 2,650 | 33,658 | (7.7) | 86,866 | (7.8) | 28,628 | 58,238 |
| | AUG | 2,924 | 3,068 | 7,674 | 30,960 | 2,646 | 33,606 | (7.6) | 86,691 | (7.6) | 28,578 | 58,113 |
| | SEP | 2,806 | 2,995 | 7,573 | 30,773 | 2,623 | 33,396 | (6.8) | 86,422 | (6.7) | 28,446 | 57,976 |
| | OCT | 3,102 | 3,164 | 7,608 | 30,856 | 2,584 | 33,440 | (6.0) | 86,317 | (6.2) | 28,416 | 57,901 |
| | NOV | 2,484 | 3,120 | 7,510 | 30,376 | 2,543 | 32,919 | (6.7) | 84,992 | (6.9) | 27,952 | 57,040 |
| 2014 AVG to date | | 2,852 | 3,088 | 7,725 | 31,182 | 2,611 | 33,794 | | 87,242 | | 28,679 | 58,563 |



Data is derived from NJ MMIS Shared Data Warehouse Issuance files.
Effective July 2013 this data query source was converted to the SDW

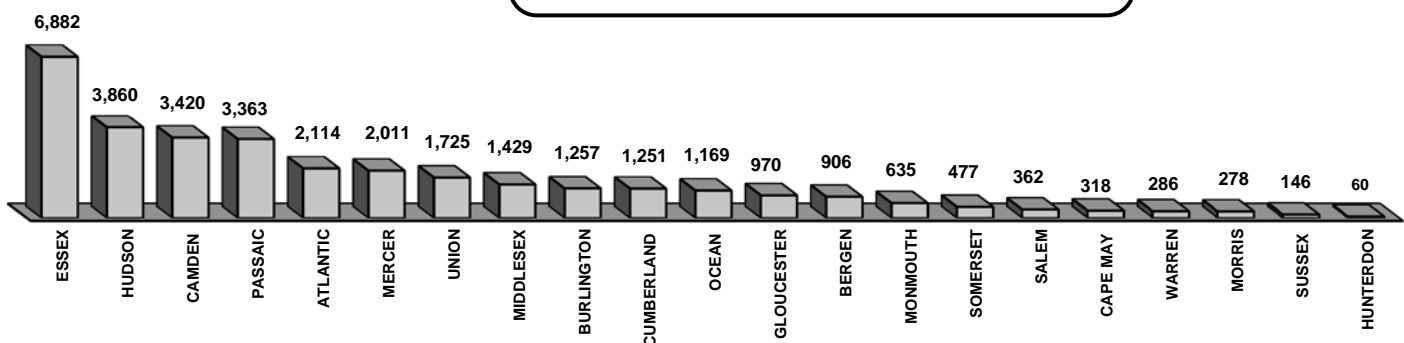
‡ Child-only cases are defined as families in which no eligible adult receives TANF program benefits, yet the family continues to be headed by at least one of the biological parents, or grandparents, or other appropriate adult.

Table 2
WFNJ/TANF
PROGRAM

NUMBER OF APPLICATIONS AND TERMINATIONS BY COUNTY DURING NOVEMBER 2014
NUMBER OF ELIGIBLE FAMILIES RECEIVING WFNJ/TANF REPORTED FOR NOVEMBER 2014

| County | Cases Added | Cases Closed** | Child- | | Total | | Total | | % Chng (3 Mon) | % Chng (1 Yr) |
|-----------------|--------------|----------------|--------------|---------------|---------------------|-------------------|--------------------|--------------|----------------|---------------|
| | | | Only Cases ‡ | 1-Adult Cases | Singl-Head Families | 2-Parent Families | WFNJ/TANF Families | | | |
| ATLANTIC | 129 | 150 | 499 | 1,388 | 1,887 | 227 | 2,114 | (0.8) | | 4.2 |
| BERGEN | 70 | 88 | 134 | 690 | 824 | 82 | 906 | (1.4) | | (2.1) |
| BURLINGTON | 164 | 146 | 265 | 875 | 1,140 | 117 | 1,257 | 6.3 | | 19.3 Δ |
| CAMDEN | 242 | 273 | 1,036 | 2,187 | 3,223 | 197 | 3,420 | (1.5) | | (6.6) |
| CAPE MAY | 18 | 41 | 76 | 215 | 291 | 27 | 318 | (7.6) | | (19.5) |
| CUMBERLAND | 106 | 155 | 332 | 778 | 1,110 | 141 | 1,251 | (3.8) | | 4.0 |
| ESSEX | 491 | 700 | 1,150 | 5,275 | 6,425 | 457 | 6,882 | (1.9) | | (7.7) |
| GLOUCESTER | 74 | 133 | 234 | 620 | 854 | 116 | 970 | (5.6) | | (12.8) |
| HUDSON | 322 | 405 | 844 | 2,760 | 3,604 | 256 | 3,860 | (2.8) | | (9.2) |
| HUNTERDON | 5 | 19 | 10 | 42 | 52 | 8 | 60 | (23.1) | | (20.0) * |
| MERCER | 136 | 131 | 536 | 1,368 | 1,904 | 107 | 2,011 | (0.3) | | (5.5) |
| MIDDLESEX | 109 | 145 | 466 | 877 | 1,343 | 86 | 1,429 | (1.5) | | 5.1 Δ |
| MONMOUTH | 57 | 71 | 182 | 423 | 605 | 30 | 635 | (5.4) | | (23.0) * |
| MORRIS | 34 | 41 | 62 | 187 | 249 | 29 | 278 | 2.2 | | 6.9 Δ |
| OCEAN | 104 | 102 | 248 | 761 | 1,009 | 160 | 1,169 | (0.8) | | (16.4) |
| PASSAIC | 195 | 188 | 732 | 2,380 | 3,112 | 251 | 3,363 | 2.7 | | (14.4) |
| SALEM | 45 | 65 | 117 | 214 | 331 | 31 | 362 | (10.4) | | (22.3) * |
| SOMERSET | 30 | 44 | 123 | 322 | 445 | 32 | 477 | 1.3 | | (0.6) |
| SUSSEX | 12 | 20 | 32 | 103 | 135 | 11 | 146 | (5.2) | | (18.0) |
| UNION | 118 | 159 | 383 | 1,211 | 1,594 | 131 | 1,725 | (1.2) | | (1.6) |
| WARREN | 23 | 44 | 49 | 190 | 239 | 47 | 286 | (9.8) | | (12.8) |
| NJ TOTAL | 2,484 | 3,120 | 7,510 | 22,866 | 30,376 | 2,543 | 32,919 | (1.4) | | (6.7) |

Total WFNJ/TANF Families
NOVEMBER 2014
By County



Data is derived from NJ MMIS Shared Data Warehouse Issuance files.

Effective July 2013 this data query source was converted to the SDW

‡ Child-only cases are defined as families in which no eligible adult receives TANF program benefits, yet the family continues to be headed by at least one of the biological parents, or grandparents, or other appropriate adult

** "Cases closed" include cases that received a benefit in the prior month, but did not receive any TANF benefit for the report month.

"Δ=higher caseload % change

"*=lower caseload % change

Table 2B

WFNJ/TANF

PROGRAM

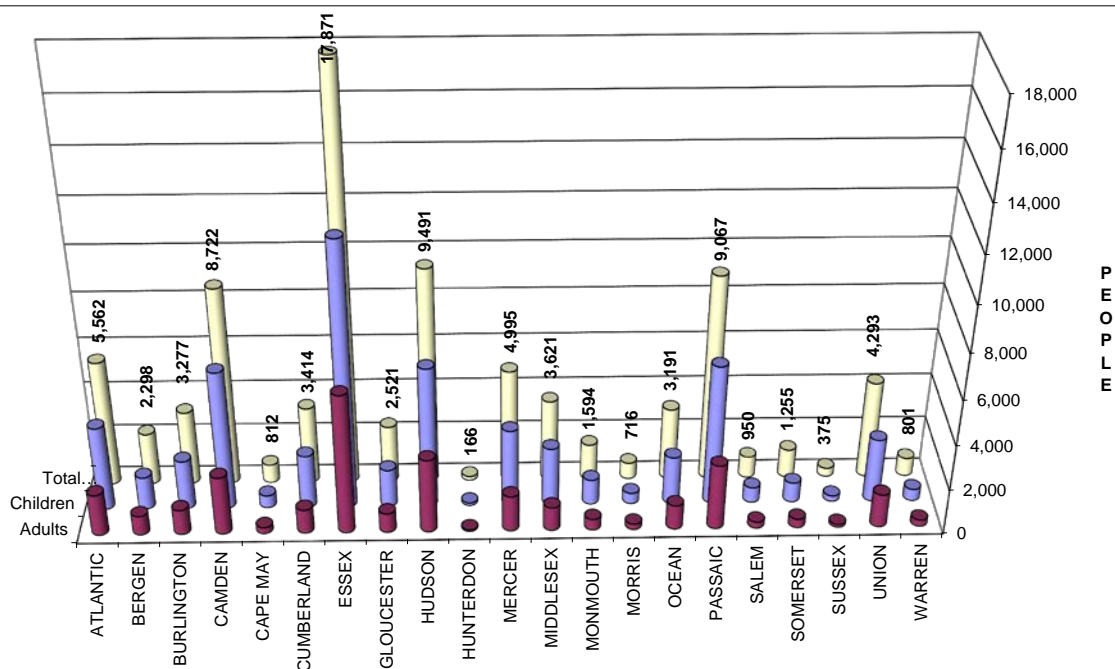
Δ= ↑ Caseload %

*= ↓ Caseload %

NUMBER OF PARTICIPATING PERSONS, ADULTS, AND CHILDREN BY COUNTY FOR NOVEMBER 2014

PERSONS

| County | Adults | Children | Child/Adult Ratio | Total Persons | % Chng (1 Yr) | Persons Per Case |
|-------------------|--------|----------|----------------------|------------------|------------------|---------------------|
| ATLANTIC | 1,842 | 3,720 | 2.02 | 5,562 | 4.9 | 2.63 |
| BERGEN | 854 | 1,444 | 1.69 | 2,298 | (4.4) | 2.54 |
| BURLINGTON | 1,109 | 2,168 | 1.95 | 3,277 | 20.1 Δ | 2.61 |
| CAMDEN | 2,581 | 6,141 | 2.38 | 8,722 | (6.8) | 2.55 |
| CAPE MAY | 269 | 543 | 2.02 | 812 | (21.5) * | 2.55 |
| CUMBERLAND | 1,060 | 2,354 | 2.22 | 3,414 | 5.2 | 2.73 |
| ESSEX | 6,189 | 11,682 | 1.89 | 17,871 | (7.3) | 2.60 |
| GLOUCESTER | 852 | 1,669 | 1.96 | 2,521 | (12.6) | 2.60 |
| HUDSON | 3,272 | 6,219 | 1.90 | 9,491 | (9.3) | 2.46 |
| HUNTERDON | 58 | 108 | 1.86 | 166 | (19.4) | 2.77 |
| MERCER | 1,582 | 3,413 | 2.16 | 4,995 | (5.9) | 2.48 |
| MIDDLESEX | 1,049 | 2,572 | 2.45 | 3,621 | 5.8 Δ | 2.53 |
| MONMOUTH | 483 | 1,111 | 2.30 | 1,594 | (27.2) * | 2.51 |
| MORRIS | 245 | 471 | 1.92 | 716 | 8.0 Δ | 2.58 |
| OCEAN | 1,081 | 2,110 | 1.95 | 3,191 | (15.1) | 2.73 |
| PASSAIC | 2,882 | 6,185 | 2.15 | 9,067 | (15.1) | 2.70 |
| SALEM | 276 | 674 | 2.44 | 950 | (25.1) * | 2.62 |
| SOMERSET | 386 | 869 | 2.25 | 1,255 | 0.1 | 2.63 |
| SUSSEX | 125 | 250 | 2.00 | 375 | (13.0) | 2.57 |
| UNION | 1,473 | 2,820 | 1.91 | 4,293 | (3.8) | 2.49 |
| WARREN | 284 | 517 | 1.82 | 801 | (11.2) | 2.80 |
| NJ TOTAL | 27,952 | 57,040 | 2.04 | 84,992 | (6.9) | 2.58 |



Data is derived from NJ MMIS Shared Data Warehouse Issuance files.
Effective July 2013 this data query source was converted to the SDW

TABLE 3

**Work Participation Rates Achieved Over 12 Month Period
Ending With NOVEMBER 2014**

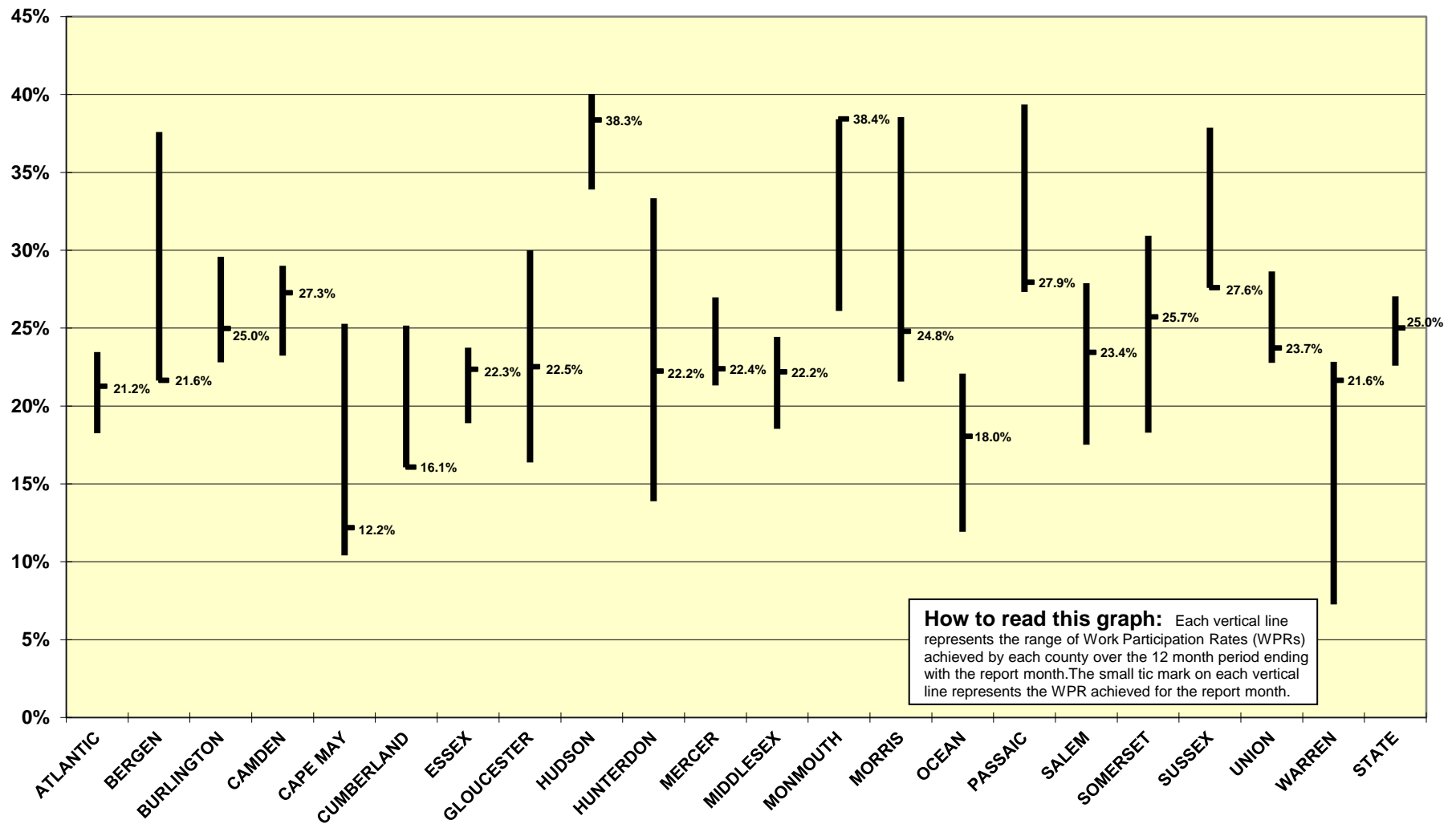
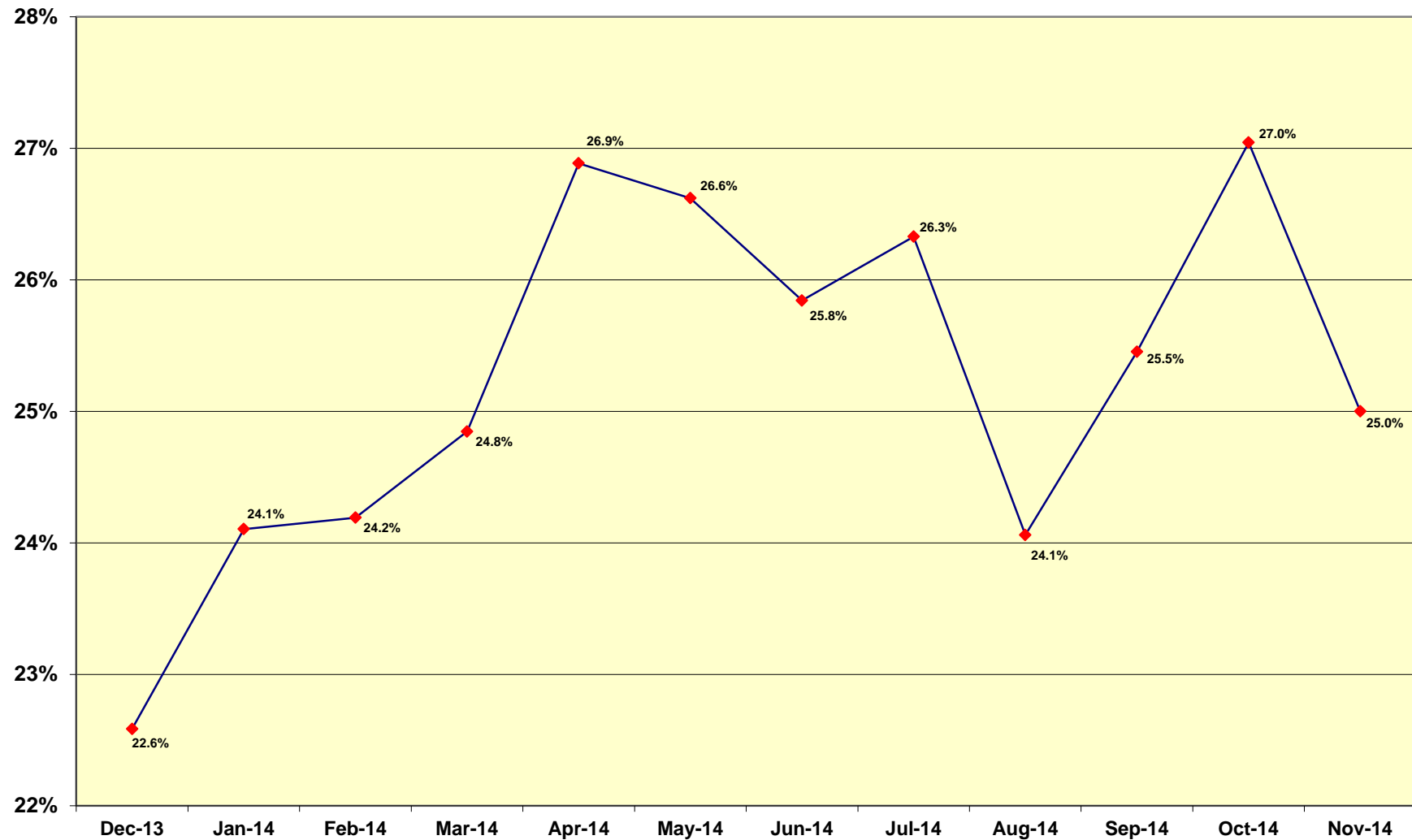


TABLE 4

**WFNJ/TANF Work Participation Rates
for 12-Month Period Ending with NOVEMBER 2014 Statewide**



* The Work Participation rate measures the number of countable Temporary Assistance for Needy Families (TANF) participants based on federal formula. The reported rate is considered to be preliminary until officially calculated by the federal government soon after the close of each federal fiscal year.

Table 5
NJ SNAP
(FOOD STAMPS)

**NUMBER OF PARTICIPATING HOUSEHOLDS, PERSONS, ADULTS
AND CHILDREN FOR NOVEMBER 2014 (STATEWIDE)**

NOVEMBER 2012 THROUGH NOVEMBER 2014

HOUSEHOLDS

PERSONS

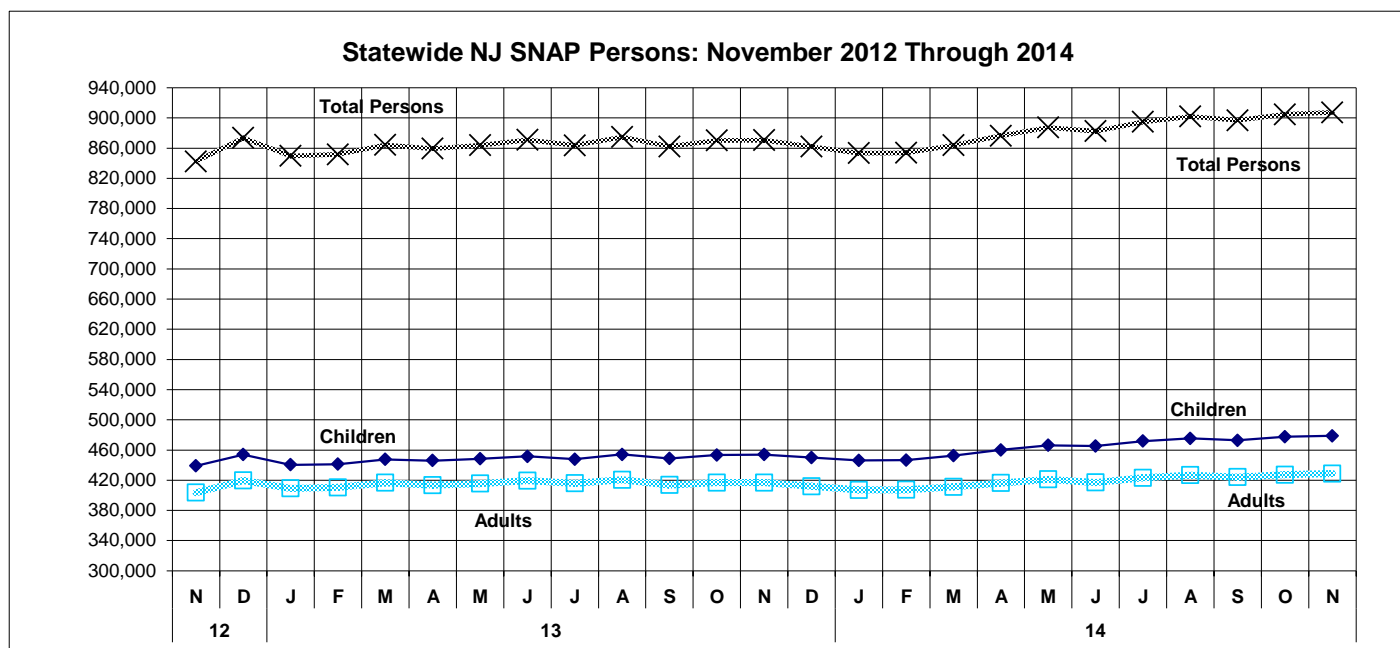
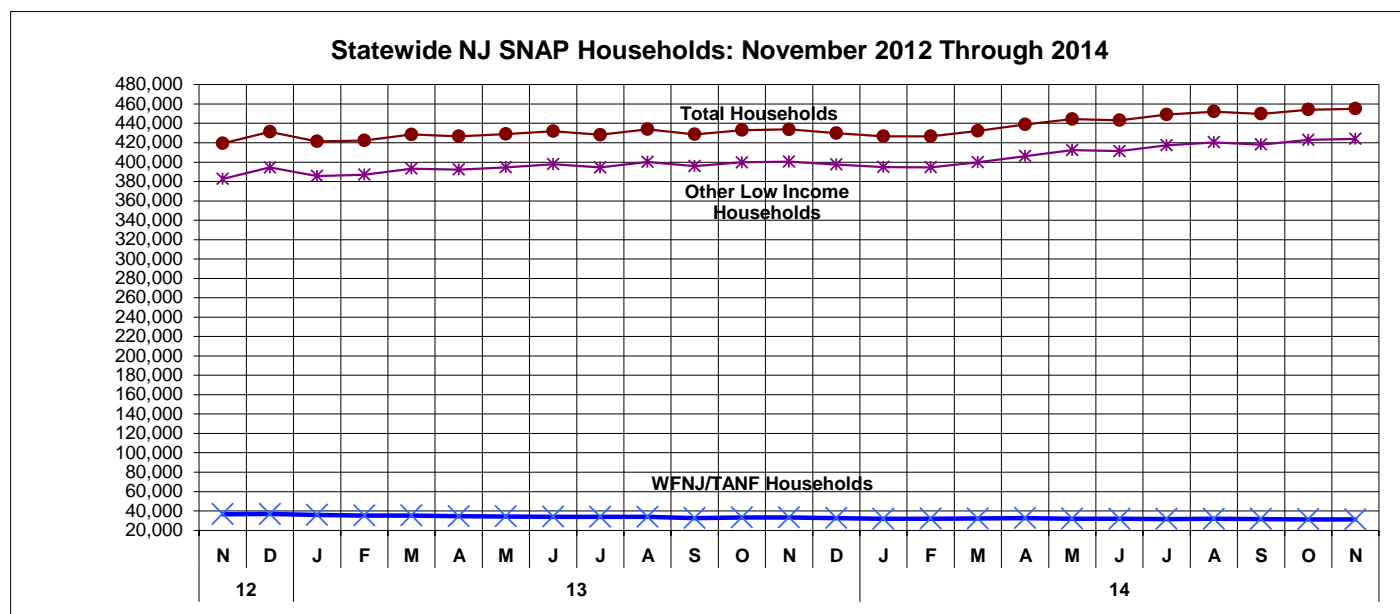
| | | WFNJ/ TANF | Other low income | TOTAL | % CHNG (1 Yr.) | Adults | Children | TOTAL | % CHNG (1 Yr.) |
|-------------|-------------------------|---------------|---------------------|----------------|-------------------|----------------|----------------|----------------|-------------------|
| 2012 | NOV | 36,659 | 382,588 | 419,247 | 8.6% | 438,941 | 403,443 | 842,384 | 7.6% |
| | DEC | 36,742 | 394,413 | 431,155 | 9.5% | 453,869 | 419,660 | 873,529 | 9.3% |
| | 2012 Average | 36,707 | 372,568 | 409,275 | | 428,141 | 395,268 | 823,408 | |
| 2013 | JAN | 35,729 | 385,739 | 421,468 | 7.4% | 440,452 | 409,142 | 849,594 | 7.1% |
| | FEB | 35,292 | 386,957 | 422,249 | 6.8% | 441,240 | 410,471 | 851,711 | 7.0% |
| | MAR | 35,309 | 393,121 | 428,430 | 6.2% | 447,690 | 416,565 | 864,255 | 6.5% |
| | APR | 34,461 | 392,185 | 426,646 | 6.4% | 446,006 | 413,347 | 859,353 | 6.7% |
| | MAY | 34,283 | 394,532 | 428,815 | 5.7% | 448,278 | 415,510 | 863,788 | 6.1% |
| | JUN | 34,001 | 397,770 | 431,771 | 5.2% | 451,547 | 419,410 | 870,957 | 5.7% |
| | JUL | 33,781 | 394,400 | 428,181 | 5.3% | 447,859 | 415,783 | 863,642 | 5.8% |
| | AUG | 33,853 | 400,058 | 433,911 | 5.4% | 454,157 | 420,562 | 874,719 | 5.9% |
| | SEP | 32,729 | 395,941 | 428,670 | 3.3% | 448,634 | 413,586 | 862,220 | 3.2% |
| | OCT | 33,282 | 399,729 | 433,011 | 3.2% | 453,354 | 416,794 | 870,148 | 3.2% |
| | NOV | 33,180 | 400,574 | 433,754 | 3.5% | 453,834 | 416,756 | 870,590 | 3.3% |
| | DEC | 32,495 | 397,432 | 429,927 | -0.3% | 449,925 | 412,000 | 861,925 | -1.3% |
| | 2013 Average | 34,033 | 394,870 | 428,903 | | 448,581 | 414,994 | 863,575 | |
| 2014 | JAN | 31,829 | 394,794 | 426,623 | 1.2% | 446,334 | 407,091 | 853,425 | 0.5% |
| | FEB | 32,021 | 394,638 | 426,659 | 1.0% | 446,546 | 407,230 | 853,776 | 0.2% |
| | MAR | 32,144 | 399,987 | 432,131 | 0.9% | 452,709 | 411,141 | 863,850 | 0.0% |
| | APR | 32,546 | 406,270 | 438,816 | 2.9% | 460,037 | 416,286 | 876,323 | 2.0% |
| | MAY | 32,061 | 412,260 | 444,321 | 3.6% | 466,314 | 420,998 | 887,312 | 2.7% |
| | JUN | 31,816 | 411,322 | 443,138 | 2.6% | 465,366 | 417,044 | 882,410 | 1.3% |
| | JUL | 31,630 | 417,371 | 449,001 | 4.9% | 471,778 | 423,075 | 894,853 | 3.6% |
| | AUG | 31,814 | 420,403 | 452,217 | 4.2% | 475,324 | 426,628 | 901,952 | 3.1% |
| | SEP | 31,749 | 418,115 | 449,864 | 4.9% | 472,843 | 424,063 | 896,906 | 4.0% |
| | OCT | 31,382 | 422,820 | 454,202 | 4.9% | 477,582 | 427,188 | 904,770 | 4.0% |
| | NOV | 31,119 | 424,004 | 455,123 | 4.9% | 478,683 | 428,652 | 907,335 | 4.2% |
| | 2014 AVG to date | 31,828 | 411,089 | 442,918 | | 464,865 | 419,036 | 883,901 | |

This Table is based on those Households & Persons that received SNAP issuances (benefits) during the month.

Data is derived from NJ MMIS Shared Data Warehouse.

Effective July 2013 this data query source was converted to the SDW.

**TABLE 6: NJ SNAP (FOOD STAMPS)
TRENDS FOR PARTICIPATING HOUSEHOLDS & PERSONS
NOVEMBER 2012 THROUGH NOVEMBER 2014 (STATEWIDE)**

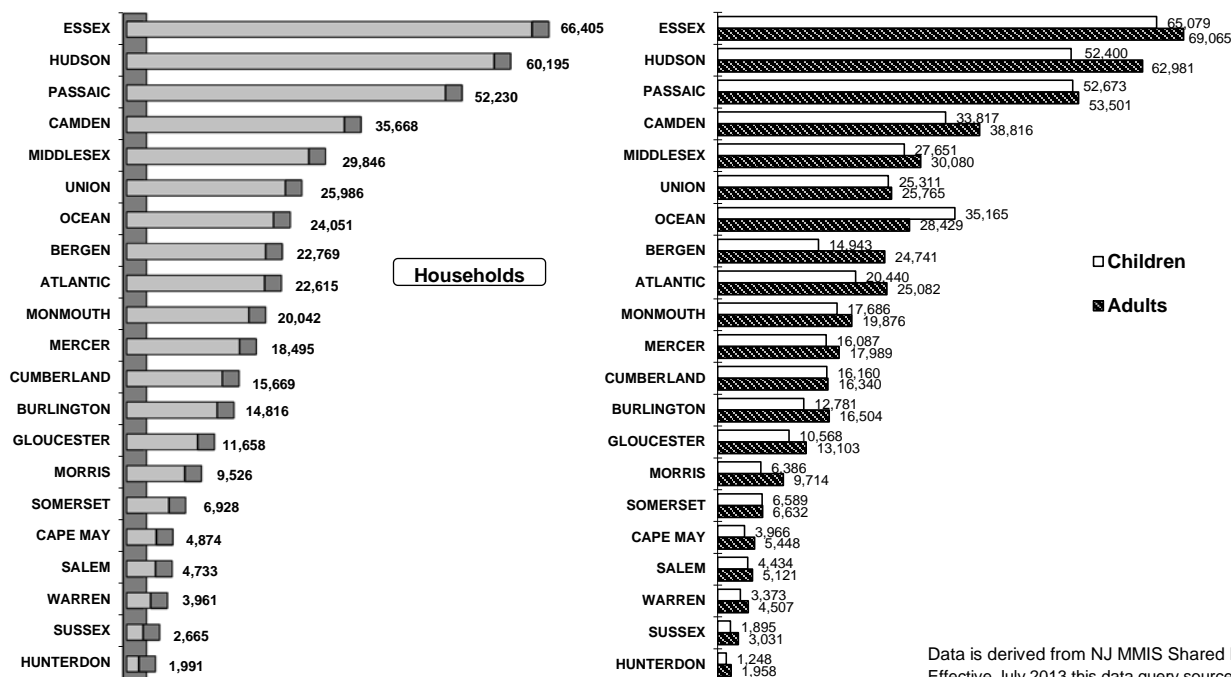


Data is derived from NJ MMIS Shared Data Warehouse.
Effective July 2013 this data query source was converted to the SDW.

Table 7
NJ SNAP**NUMBER OF PARTICIPATING HOUSEHOLDS, PERSONS, ADULTS
AND CHILDREN BY COUNTY FOR NOVEMBER 2014**

Δ= ↑ Caseload %
*= ↓ Caseload %

| County | HOUSEHOLDS | | | | PERSONS | | | |
|-----------------|---------------|---------------------|----------------|------------------|----------------|----------------|----------------|------------------|
| | WFNJ/ TANF | Other low income | TOTAL | % Chng (1 Yr) | Adults | Children | TOTAL | % Chng (1 Yr) |
| ATLANTIC | 1,986 | 20,629 | 22,615 | 7.6 | 25,082 | 20,440 | 45,522 | 7.9 |
| BERGEN | 880 | 21,889 | 22,769 | 9.5 | 24,741 | 14,943 | 39,684 | 10.7 Δ |
| BURLINGTON | 1,257 | 13,559 | 14,816 | 11.9 Δ | 16,504 | 12,781 | 29,285 | 9.8 |
| CAMDEN | 3,174 | 32,494 | 35,668 | 6.0 | 38,816 | 33,817 | 72,633 | 5.5 |
| CAPE MAY | 315 | 4,559 | 4,874 | (6.2) * | 5,448 | 3,966 | 9,414 | (8.2) * |
| CUMBERLAND | 1,226 | 14,443 | 15,669 | 2.6 | 16,340 | 16,160 | 32,500 | 2.5 |
| ESSEX | 6,633 | 59,772 | 66,405 | 3.1 | 69,065 | 65,079 | 134,144 | 2.2 |
| GLOUCESTER | 862 | 10,796 | 11,658 | (0.2) | 13,103 | 10,568 | 23,671 | (2.4) |
| HUDSON | 3,588 | 56,607 | 60,195 | 3.5 | 62,981 | 52,400 | 115,381 | 2.2 |
| HUNTERDON | 60 | 1,931 | 1,991 | (2.2) | 1,958 | 1,248 | 3,206 | (5.3) * |
| MERCER | 1,898 | 16,597 | 18,495 | (4.3) * | 17,989 | 16,087 | 34,076 | (4.2) |
| MIDDLESEX | 1,316 | 28,530 | 29,846 | 8.5 | 30,080 | 27,651 | 57,731 | 7.6 |
| MONMOUTH | 616 | 19,426 | 20,042 | 11.5 Δ | 19,876 | 17,686 | 37,562 | 10.9 Δ |
| MORRIS | 256 | 9,270 | 9,526 | 4.6 | 9,714 | 6,386 | 16,100 | 4.6 |
| OCEAN | 1,145 | 22,906 | 24,051 | 4.3 | 28,429 | 35,165 | 63,594 | 4.2 |
| PASSAIC | 3,318 | 48,912 | 52,230 | 2.9 | 53,501 | 52,673 | 106,174 | 2.2 |
| SALEM | 327 | 4,406 | 4,733 | 8.2 | 5,121 | 4,434 | 9,555 | 4.5 |
| SOMERSET | 417 | 6,511 | 6,928 | 2.7 | 6,632 | 6,589 | 13,221 | 2.2 |
| SUSSEX | 125 | 2,540 | 2,665 | (5.6) * | 3,031 | 1,895 | 4,926 | (8.2) * |
| UNION | 1,455 | 24,531 | 25,986 | 14.4 Δ | 25,765 | 25,311 | 51,076 | 14.1 Δ |
| WARREN | 265 | 3,696 | 3,961 | 3.4 | 4,507 | 3,373 | 7,880 | 3.5 |
| NJ TOTAL | 31,119 | 424,004 | 455,123 | 4.9 | 478,683 | 428,652 | 907,335 | 4.2 |

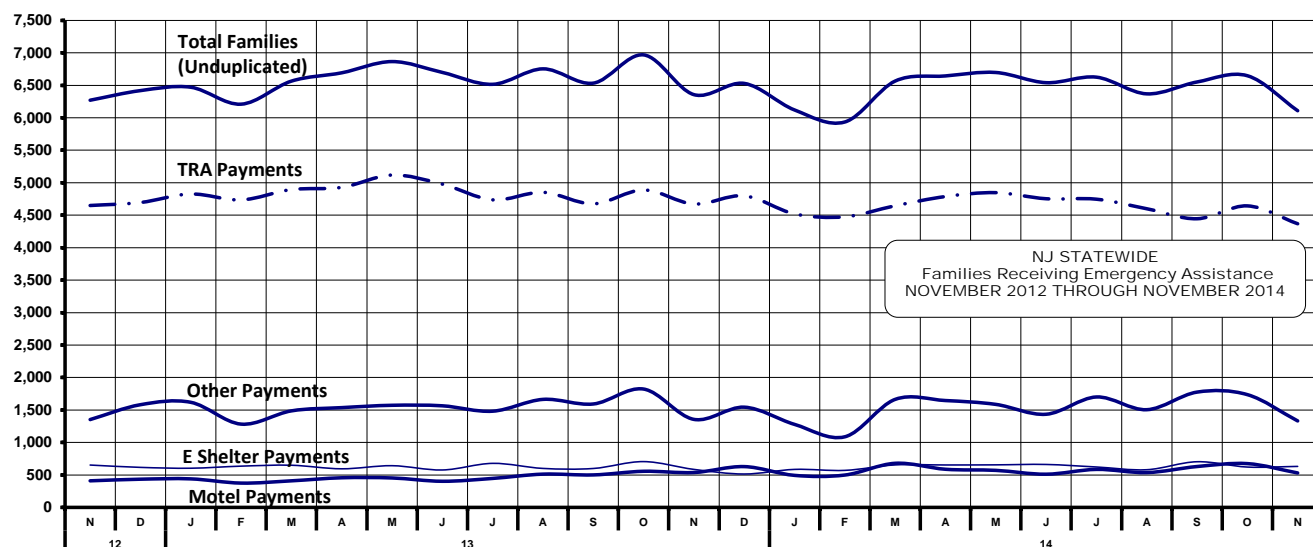
Total NJ SNAP Recipients
NOVEMBER 2014 By County

Data is derived from NJ MMIS Shared Data Warehouse
Effective July 2013 this data query source was converted to the SDW

Table 8

TOTAL NUMBER OF ELIGIBLE FAMILIES RECEIVING EMERGENCY ASSISTANCE PAYMENTSEMERGENCY
ASSISTANCE
(STATEWIDE)**NOVEMBER 2012 THROUGH NOVEMBER 2014 - STATEWIDE**

| | | TOTAL WFNJ/EA | | Temp Rent Asst. | | Motel Housing | | Shelter/Transitional Housing | | Other EA | |
|-------------------------|---------------------|----------------------|------------------|----------------------|------------------|----------------------|------------------|---------------------------------|------------------|----------------------|------------------|
| | | Families (Undupl) | % CHNG (1 YR) | Payments (Undupl) | % CHNG (1 YR) | Payments (Undupl) | % CHNG (1 YR) | Payments (Undupl) | % CHNG (1 YR) | Payments (Undupl) | % CHNG (1 YR) |
| 2012 | NOV | 6,270 | -11.4% | 4,649 | -10.1% | 410 | 16.1% | 653 | 9.6% | 1,353 | -27.4% |
| | DEC | 6,418 | -14.0% | 4,695 | -10.6% | 435 | -22.2% | 617 | -17.6% | 1,582 | -20.9% |
| | 2012 Average | 6,614 | | 4,801 | | 431 | | 643 | | 1,646 | |
| 2013 | JAN | 6,470 | -7.5% | 4,826 | -5.6% | 440 | -8.3% | 604 | -6.1% | 1,619 | -4.1% |
| | FEB | 6,209 | -8.7% | 4,735 | -6.8% | 375 | -13.8% | 636 | -3.0% | 1,283 | -14.4% |
| | MAR | 6,564 | -7.8% | 4,894 | -7.0% | 410 | -22.1% | 650 | -4.7% | 1,487 | -12.4% |
| | APR | 6,692 | -0.8% | 4,928 | -0.1% | 457 | -1.3% | 595 | -9.7% | 1,537 | -6.4% |
| | MAY | 6,865 | 0.4% | 5,118 | 2.5% | 454 | 12.4% | 643 | -3.5% | 1,573 | -6.6% |
| | JUN | 6,698 | 3.2% | 4,978 | 4.1% | 403 | 7.5% | 577 | -9.0% | 1,565 | 1.9% |
| | JUL | 6,515 | 2.2% | 4,736 | 4.5% | 447 | 11.5% | 679 | 2.9% | 1,482 | -8.4% |
| | AUG | 6,753 | 4.3% | 4,852 | 5.5% | 513 | 44.5% | 601 | -1.6% | 1,664 | -10.6% |
| | SEP | 6,533 | 3.0% | 4,675 | 3.5% | 501 | 26.8% | 600 | 5.6% | 1,593 | -9.4% |
| | OCT | 6,968 | 7.2% | 4,888 | 9.9% | 557 | 12.3% | 706 | 6.6% | 1,823 | -0.7% |
| | NOV | 6,356 | 1.4% | 4,672 | 0.5% | 538 | 31.2% | 586 | -10.3% | 1,356 | 0.2% |
| | DEC | 6,529 | 1.7% | 4,798 | 2.2% | 629 | 44.6% | 515 | -16.5% | 1,544 | -2.4% |
| | 2013 Average | 6,596 | | 4,842 | | 477 | | 616 | | 1,544 | |
| 2014 | JAN | 6,120 | -5.4% | 4,520 | -6.3% | 494 | 12.3% | 586 | -3.0% | 1,279 | -21.0% |
| | FEB | 5,935 | -4.4% | 4,475 | -5.5% | 499 | 33.1% | 571 | -10.2% | 1,088 | -15.2% |
| | MAR | 6,565 | 0.0% | 4,645 | -5.1% | 680 | 65.9% | 655 | 0.8% | 1,664 | 11.9% |
| | APR | 6,644 | -0.7% | 4,787 | -2.9% | 588 | 28.7% | 654 | 9.9% | 1,646 | 7.1% |
| | MAY | 6,697 | -2.4% | 4,847 | -5.3% | 571 | 25.8% | 656 | 2.0% | 1,587 | 0.9% |
| | JUN | 6,540 | -2.4% | 4,753 | -4.5% | 512 | 27.0% | 662 | 14.7% | 1,435 | -8.3% |
| | JUL | 6,625 | 1.7% | 4,746 | 0.2% | 586 | 31.1% | 623 | -8.2% | 1,701 | 14.8% |
| | AUG | 6,368 | -5.7% | 4,599 | -5.2% | 537 | 4.7% | 581 | -3.3% | 1,505 | -9.6% |
| | SEP | 6,551 | 0.3% | 4,445 | -4.9% | 630 | 25.7% | 704 | 17.3% | 1,776 | 11.5% |
| | OCT | 6,647 | -4.6% | 4,643 | -5.0% | 675 | 21.2% | 622 | -11.9% | 1,737 | -4.7% |
| | NOV | 6,108 | -3.9% | 4,368 | -6.5% | 531 | -1.3% | 632 | 7.8% | 1,332 | -1.8% |
| 2014 AVG to date | | 6,436 | | 4,621 | | 573 | | 631 | | 1,523 | |



WFNJ/EA data is derived from NJ MMIS Shared Data Warehouse.
Effective July 2013 this data query source was converted to the SDW.

* Effective Feb '11 Transitional Housing Payments were removed from "Other EA Payments" and added to "Shelter Payments."

Table 9
EMERGENCY
ASSISTANCE
(BY COUNTY)

**NUMBER OF TOTAL ELIGIBLE FAMILIES RECEIVING EMERGENCY ASSISTANCE PAYMENTS
BY COUNTY (UNDUPLICATED CASES) NOVEMBER 2014**

| County | TOTAL WFNJ/EA Families (Undupl) | % CHNG From Nov 13 | Temp Rent Asst. Payments (Undupl) | Motel Housing Payments (Undupl) | Shelter/Transitional Housing Payments (Undupl) | Other WFNJ/EA Payments (Undupl) | SSI Recipients Receiving EA** |
|-----------------|--|-----------------------------|--|--|---|--|-------------------------------------|
| ATLANTIC | 476 | 15.0% | 383 | 38 | 6 | 117 | 111 |
| BERGEN | 297 | -19.3% | 242 | 3 | 38 | 39 | 64 |
| BURLINGTON | 414 | 38.0% Δ | 195 | 106 | 111 | 108 | 172 |
| CAMDEN | 186 | 0.0% | 112 | 25 | 26 | 50 | 22 |
| CAPE MAY | 62 | -50.4% * | 40 | 22 | 0 | 6 | 78 |
| CUMBERLAND | 58 | 48.7% Δ | 35 | 12 | 5 | 21 | 16 |
| ESSEX | 1,473 | -1.8% | 1,170 | 0 | 203 | 254 | 176 |
| GLOUCESTER | 115 | 13.9% | 78 | 20 | 12 | 13 | 20 |
| HUDSON | 421 | -20.4% | 298 | 81 | 7 | 71 | 10 |
| HUNTERDON | 28 | -34.9% * | 27 | 0 | 1 | 6 | 61 |
| MERCER | 493 | -13.2% | 282 | 33 | 60 | 183 | 224 |
| MIDDLESEX | 176 | -3.8% | 108 | 31 | 16 | 48 | 29 |
| MONMOUTH | 69 | -11.5% | 5 | 29 | 30 | 8 | 8 |
| MORRIS | 93 | 31.0% Δ | 71 | 15 | 3 | 14 | 35 |
| OCEAN | 342 | -0.6% | 241 | 69 | 0 | 99 | 214 |
| PASSAIC | 856 | -7.2% | 694 | 23 | 35 | 180 | 139 |
| SALEM | 15 | -34.8% | 11 | 2 | 1 | 5 | 9 |
| SOMERSET | 126 | -7.4% | 95 | 6 | 9 | 28 | 102 |
| SUSSEX | 33 | -34.0% | 23 | 1 | 2 | 8 | 15 |
| UNION | 326 | 9.8% | 215 | 14 | 65 | 66 | 47 |
| WARREN | 49 | -38.0% * | 43 | 1 | 2 | 8 | 3 |
| NJ TOTAL | 6,108 | -3.9% | 4,368 | 531 | 632 | 1,332 | 1,555 |

Δ= ↑ Caseload %

* = ↓ Caseload %

**SSI-EA includes pay codes 22 and 24, data is derived from NJ Division of Family Development FAMIS Report #FM430-03A

WFNJ/EA data is derived from NJ MMIS Shared Data Warehouse.

Effective July 2013 this data query source was converted to the SDW

**Number WFNJ Families Receiving EA by County
NOVEMBER 2014**

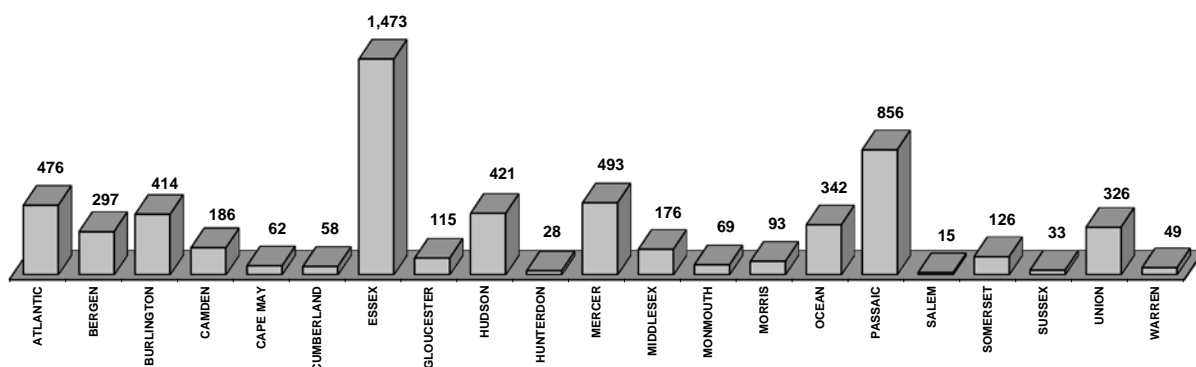
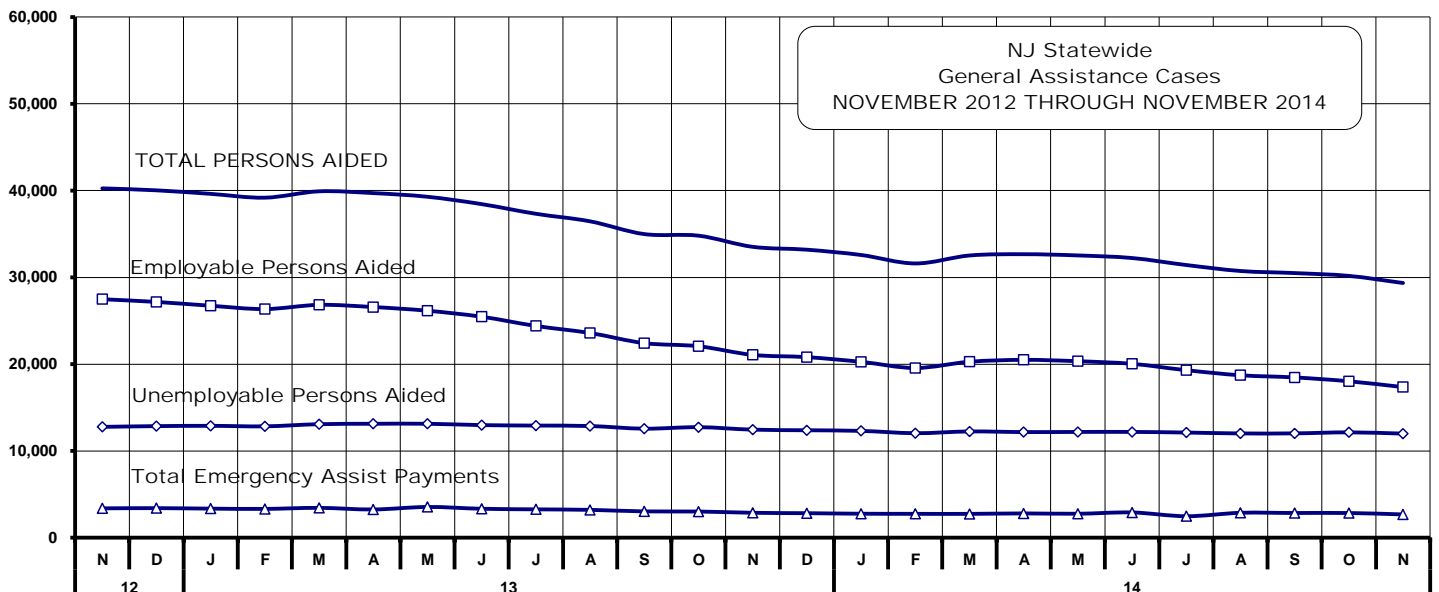


Table 10 **NUMBER OF EMPLOYABLE AND UNEMPLOYABLE RECIPIENTS
GENERAL AND EMERGENCY ASSISTANCE PAYMENTS FOR NOVEMBER 2014 - STATEWIDE**
ASSISTANCE PROGRAM NOVEMBER 2012 THROUGH NOVEMBER 2014

| | | Total Cases | | | | | | Emergency Assistance Cases | | | |
|------|-------------------------|---------------|------------------|---------------|------------------|---------------|------------------|--------------------------------|----------------|--------------|------------------|
| | | Employable | % Chng (1 Yr) | Unemployable | % Chng (1 Yr) | Total | % Chng (1 Yr) | Temporary Rental Assistance | Other GA-EA | Total | % Chng (1 Yr) |
| 2012 | NOV | 27,485 | -13.2% | 12,774 | -5.2% | 40,259 | -10.8% | 3,385 | 2,433 | 5,818 | -18.7% |
| | DEC | 27,172 | -13.6% | 12,861 | -4.0% | 40,033 | -10.8% | 3,409 | 2,781 | 6,190 | -15.8% |
| | 2012 Average | 29,869 | | 13,178 | | 43,047 | | 3,734 | 2,929 | 6,663 | |
| 2013 | JAN | 26,732 | -13.9% | 12,893 | -2.4% | 39,625 | -10.4% | 3,352 | 2,910 | 6,262 | -10.6% |
| | FEB | 26,349 | -15.4% | 12,837 | -1.4% | 39,186 | -11.2% | 3,321 | 2,630 | 5,951 | -12.3% |
| | MAR | 26,835 | -15.1% | 13,083 | -1.0% | 39,918 | -10.9% | 3,441 | 3,098 | 6,539 | -10.3% |
| | APR | 26,583 | -15.4% | 13,130 | 0.0% | 39,713 | -10.8% | 3,257 | 3,165 | 6,422 | -9.4% |
| | MAY | 26,158 | -16.4% | 13,132 | -0.7% | 39,290 | -11.7% | 3,545 | 2,917 | 6,462 | -7.9% |
| | JUN | 25,465 | -16.9% | 12,976 | -3.7% | 38,441 | -12.9% | 3,336 | 2,676 | 6,012 | -11.2% |
| | JUL | 24,405 | -18.2% | 12,924 | -3.7% | 37,329 | -13.7% | 3,270 | 2,496 | 5,766 | -13.2% |
| | AUG | 23,590 | -20.2% | 12,871 | -4.3% | 36,461 | -15.2% | 3,210 | 2,907 | 6,117 | -7.4% |
| | SEP | 22,424 | -22.3% | 12,566 | -4.8% | 34,990 | -16.8% | 3,034 | 2,480 | 5,514 | -9.5% |
| | OCT | 22,067 | -22.3% | 12,739 | -3.2% | 34,806 | -16.2% | 3,019 | 2,833 | 5,852 | -11.9% |
| | NOV | 21,070 | -23.3% | 12,453 | -2.5% | 33,523 | -16.7% | 2,872 | 2,153 | 5,025 | -13.6% |
| | DEC | 20,809 | -23.4% | 12,383 | -3.7% | 33,192 | -17.1% | 2,826 | 2,225 | 5,051 | -18.4% |
| | 2013 Average | 24,374 | | 12,832 | | 37,206 | | 3,207 | 2,708 | 5,914 | |
| 2014 | JAN | 20,271 | -24.2% | 12,311 | -4.5% | 32,582 | -17.8% | 2,766 | 2,270 | 5,036 | -19.6% |
| | FEB | 19,560 | -25.8% | 12,047 | -6.2% | 31,607 | -19.3% | 2,752 | 2,016 | 4,768 | -19.9% |
| | MAR | 20,278 | -24.4% | 12,246 | -6.4% | 32,524 | -18.5% | 2,748 | 2,764 | 5,512 | -15.7% |
| | APR | 20,497 | -22.9% | 12,174 | -7.3% | 32,671 | -17.7% | 2,802 | 2,818 | 5,620 | -12.5% |
| | MAY | 20,341 | -22.2% | 12,190 | -7.2% | 32,531 | -17.2% | 2,763 | 2,745 | 5,508 | -14.8% |
| | JUN | 20,038 | -21.3% | 12,193 | -6.0% | 32,231 | -16.2% | 2,911 | 2,701 | 5,612 | -6.7% |
| | JUL | 19,306 | -20.9% | 12,120 | -6.2% | 31,426 | -15.8% | 2,477 | 2,568 | 5,045 | -12.5% |
| | AUG | 18,721 | -20.6% | 12,017 | -6.6% | 30,738 | -15.7% | 2,872 | 2,446 | 5,318 | -13.1% |
| | SEP | 18,471 | -17.6% | 12,026 | -4.3% | 30,497 | -12.8% | 2,849 | 2,335 | 5,184 | -6.0% |
| | OCT | 18,030 | -18.3% | 12,143 | -4.7% | 30,173 | -13.3% | 2,848 | 2,661 | 5,509 | -5.9% |
| | NOV | 17,357 | -17.6% | 11,997 | -3.7% | 29,354 | -12.4% | 2,686 | 1,943 | 4,629 | -7.9% |
| | 2014 AVG to date | 19,352 | | 12,133 | | 31,485 | | 2,770 | 2,479 | 5,249 | |



Source: NJ Division of Family Development, GA Fiscal Unit

TABLE 11

GENERAL
ASSISTANCE
PROGRAM**EMPLOYABLE AND UNEMPLOYABLE CASES
AND EMERGENCY ASSISTANCE CASES RECEIVING PAYMENTS BY COUNTY**

NOVEMBER 2014

| County | Total Cases | | | | | | Emergency Assistance Cases | | | |
|-------------------|-------------|--------------------------|--------------|--------------------------|---------------|--------------------------|-----------------------------|----------------|-------|--------------------------|
| | Employable | % Chng (From Nov 13) | Unemployable | % Chng (From Nov 13) | Total | % Chng (From Nov 13) | Temporary Rental Assist. | Other GA-EA | Total | % Chng (From Nov 13) |
| ATLANTIC | 1,669 | 3.7% | 328 | 4.8% | 1,997 | 3.9% Δ | 346 | 101 | 447 | 27.0% |
| BERGEN | 732 | 18.1% | 739 | 10.1% | 1,471 | 13.9% Δ | 350 | 66 | 416 | 3.0% |
| BURLINGTON | 1,042 | 7.1% | 557 | 19.8% | 1,599 | 11.2% Δ | 95 | 229 | 324 | -15.0% |
| CAMDEN | 1,355 | -18.4% | 1,317 | -10.7% | 2,672 | -14.8% | 29 | 70 | 99 | -51.7% * |
| CAPE MAY | 204 | -53.4% | 109 | -22.1% | 313 | -45.8% * | 58 | 85 | 143 | -51.9% * |
| CUMBERLAND | 1,115 | -10.2% | 639 | -4.2% | 1,754 | -8.1% | 34 | 51 | 85 | 25.0% |
| ESSEX | 2,880 | -18.1% | 1,069 | -6.4% | 3,949 | -15.2% | 284 | 248 | 532 | -16.5% |
| GLOUCESTER | 739 | -27.4% | 337 | -1.7% | 1,076 | -20.9% * | 56 | 57 | 113 | -9.6% |
| HUDSON | 1,669 | -12.6% | 1,927 | 6.3% | 3,596 | -3.4% | 161 | 79 | 240 | 39.5% Δ |
| HUNTERDON | 77 | -6.1% | 160 | 3.9% | 237 | 0.4% | 59 | 38 | 97 | -4.0% |
| MERCER | 538 | -66.4% | 642 | -34.8% | 1,180 | -54.4% * | 126 | 129 | 255 | -48.2% * |
| MIDDLESEX | 759 | 0.1% | 493 | -14.6% | 1,252 | -6.2% | 194 | 105 | 299 | 2.0% |
| MONMOUTH | 355 | -23.0% | 352 | 15.8% | 707 | -7.6% | 25 | 39 | 64 | -43.9% |
| MORRIS | 422 | -11.0% | 392 | 6.8% | 814 | -3.2% | 156 | 106 | 262 | 18.0% |
| OCEAN | 480 | -26.9% | 479 | 1.9% | 959 | -14.9% | 140 | 126 | 266 | -15.0% |
| PASSAIC | 1,753 | -24.8% | 1,275 | -11.8% | 3,028 | -19.8% | 275 | 95 | 370 | -8.4% |
| SALEM | 114 | -44.4% | 138 | 38.0% | 252 | -17.4% | 19 | 31 | 50 | 31.6% Δ |
| SOMERSET | 168 | -18.8% | 142 | -23.2% | 310 | -20.9% | 38 | 20 | 58 | -18.3% |
| SUSSEX | 161 | -11.5% | 73 | 10.6% | 234 | -5.6% | 21 | 42 | 63 | 3.3% |
| UNION | 864 | 1.1% | 671 | 5.5% | 1,535 | 3.0% | 192 | 194 | 386 | 86.5% Δ |
| WARREN | 261 | -2.2% | 158 | 15.3% | 419 | 3.7% | 28 | 32 | 60 | -11.8% |
| NJ TOTAL | 17,357 | -17.6% | 11,997 | -3.7% | 29,354 | -12.4% | 2,686 | 1,943 | 4,629 | -7.9% |

Δ = ↑ Caseload %

* = ↓ Caseload %

Source: NJ Division of Family Development, GA Fiscal Unit

TABLE 12
OFFICE OF CHILD
SUPPORT
SERVICES

OFFICE OF CHILD SUPPORT SERVICES

Quarterly Performance Report
State Summary
TITLE IV-D SOURCE COLLECTION REPORT
Comparison of Quarter-4 (FFY 13 vs. FFY 14)

| COLLECTION SOURCE | TOTAL 7/1/2013 - 9/30/2013 | % OF TOTAL COLLECTIONS | TOTAL 7/1/2014 - 9/30/2014 | % OF TOTAL COLLECTIONS | DOLLAR CHANGE | % CHANGE |
|--------------------------------------|----------------------------------|---------------------------|----------------------------------|---------------------------|-----------------------|---------------|
| FEDERAL TAX | \$ 1,714,477 | 0.54% | \$ 1,383,401 | 0.44% | \$ (331,076) | -19.31% |
| STATE TAX | \$ 1,731,584 | 0.55% | \$ 1,755,707 | 0.55% | \$ 24,123 | 1.39% |
| UIB | \$ 14,800,734 | 4.66% | \$ 8,556,724 | 2.70% | \$ (6,244,010) | -42.19% |
| INC WITHHOLD | \$ 220,159,113 | 69.31% | \$ 223,645,574 | 70.69% | \$ 3,486,461 | 1.58% |
| FROM OTHER STATES | \$ 11,892,047 | 3.74% | \$ 12,456,433 | 3.94% | \$ 564,386 | 4.75% |
| ADMIN ENFORCEMENT | \$ 2,413,111 | 0.97% | \$ 2,117,362 | 0.85% | \$ (295,750) | -12.26% |
| OTHER | \$ 64,913,123 | 20.44% | \$ 66,444,763.45 | 21.00% | \$ 1,531,641 | 2.36% |
| TOTAL COLLECTIONS* | \$ 317,624,189 | 100% | \$ 316,359,964 | 100% | \$ (1,264,225) | -0.40% |
| DISTRIBUTED COLLECTIONS** | \$ 250,011,911 | | \$ 248,515,275 | | \$ (1,496,636) | -0.60% |

* Includes collections on both current support and arrears.

** Includes collections on both current support and arrears; also includes money sent to other states.

SOURCE: NJKiDS (Based on Federal Quarterly Report of Collections - OCSE-34A except Distributed Collections)
Distributed Collections obtained from Federal Data Report - OCSE-157, which is reported annually to Congress and used in the calculation of incentive dollars earned by each state.

TABLE 13

OFFICE OF CHILD
SUPPORT SERVICES**OFFICE OF CHILD SUPPORT SERVICES**

State Summary

TITLE IV-D PATERNITY ESTABLISHMENT REPORT**Comparison of November (FFY 14 vs. FFY 15)**

| County Office | NOVEMBER 2013 | | | NOVEMBER 2014 | | | Increase or Decrease (-) from FFY 2014 to FFY 2015 |
|------------------|--|---|--|--|---|--|---|
| | Total Children Born Out of Wedlock* | Number of Paternities Established | Percent of Paternities Established | Total Children Born Out of Wedlock* | Number of Paternities Established | Percent of Paternities Established | |
| Atlantic | 9,267 | 8,749 | 94.4% | 8,944 | 8,563 | 95.7% | 1.3% |
| Bergen | 5,049 | 4,795 | 95.0% | 4,761 | 4,542 | 95.4% | 0.4% |
| Burlington | 8,334 | 7,786 | 93.4% | 7,907 | 7,404 | 93.6% | 0.2% |
| Camden | 26,575 | 24,393 | 91.8% | 24,985 | 23,016 | 92.1% | 0.3% |
| Cape May | 2,087 | 1,999 | 95.8% | 1,937 | 1,885 | 97.3% | 1.5% |
| Cumberland | 9,737 | 9,578 | 98.4% | 9,292 | 9,177 | 98.8% | 0.4% |
| Essex | 43,772 | 38,315 | 87.5% | 40,996 | 36,383 | 88.7% | 1.2% |
| Gloucester | 6,616 | 6,398 | 96.7% | 6,304 | 6,137 | 97.4% | 0.6% |
| Hudson | 18,329 | 16,302 | 88.9% | 16,661 | 15,107 | 90.7% | 1.7% |
| Hunterdon | 491 | 475 | 96.7% | 461 | 446 | 96.7% | 0.0% |
| Mercer | 11,657 | 10,562 | 90.6% | 10,961 | 10,133 | 92.4% | 1.8% |
| Middlesex | 10,200 | 9,522 | 93.4% | 9,823 | 9,287 | 94.5% | 1.2% |
| Monmouth | 8,624 | 7,958 | 92.3% | 8,102 | 7,574 | 93.5% | 1.2% |
| Morris | 2,234 | 2,165 | 96.9% | 2,128 | 2,084 | 97.9% | 1.0% |
| Ocean | 7,192 | 6,847 | 95.2% | 6,784 | 6,489 | 95.7% | 0.4% |
| Passaic | 17,795 | 15,986 | 89.8% | 17,019 | 15,444 | 90.7% | 0.9% |
| Salem | 2,892 | 2,664 | 92.1% | 2,922 | 2,751 | 94.1% | 2.0% |
| Somerset | 3,011 | 2,763 | 91.8% | 2,578 | 2,458 | 95.3% | 3.6% |
| Sussex | 1,057 | 1,037 | 98.1% | 957 | 940 | 98.2% | 0.1% |
| Union | 13,381 | 12,137 | 90.7% | 13,682 | 12,284 | 89.8% | -0.9% |
| Warren | 1,522 | 1,472 | 96.7% | 1,381 | 1,358 | 98.3% | 1.6% |
| NJ TOTALS | 209,822 | 191,903 | 91.5% | 198,585 | 183,462 | 92.4% | 0.9% |

SOURCE: NJKiDS (Based on Federal Performance Measures - OCSE-157)

* Information on Out of Wedlock Births obtained from NJ Bureau of Vital Statistics

TABLE 14

OFFICE OF CHILD
SUPPORT SERVICES

OFFICE OF CHILD SUPPORT SERVICES

State Summary

TITLE IV-D REPORT OF CASES WITH ORDERS

Comparison of November (FFY 14 vs. FFY 15)

| County Office | November 2013 | | | November 2014 | | | Increase or Decrease (-) from FFY 2014 to FFY 2015 |
|------------------|----------------|-------------------------|---------------------------|----------------|-------------------------|---------------------------|---|
| | TOTAL CASES | CASES WITH ORDERS | % OF CASES WITH ORDERS | TOTAL CASES | CASES WITH ORDERS | % OF CASES WITH ORDERS | |
| Atlantic | 15,831 | 12,658 | 80.0% | 15,592 | 12,756 | 81.8% | 1.9% |
| Bergen | 14,837 | 13,553 | 91.3% | 14,435 | 13,203 | 91.5% | 0.1% |
| Burlington | 17,369 | 14,376 | 82.8% | 17,276 | 14,187 | 82.1% | -0.6% |
| Camden | 40,739 | 31,119 | 76.4% | 39,639 | 30,621 | 77.2% | 0.9% |
| Cape May | 4,168 | 3,565 | 85.5% | 4,026 | 3,444 | 85.5% | 0.0% |
| Cumberland | 14,808 | 13,787 | 93.1% | 14,507 | 13,554 | 93.4% | 0.3% |
| Essex | 60,967 | 43,009 | 70.5% | 58,878 | 42,440 | 72.1% | 1.5% |
| Gloucester | 12,506 | 11,046 | 88.3% | 12,427 | 11,214 | 90.2% | 1.9% |
| Hudson | 32,525 | 22,550 | 69.3% | 30,037 | 22,362 | 74.4% | 5.1% |
| Hunterdon | 1,848 | 1,734 | 93.8% | 1,839 | 1,757 | 95.5% | 1.7% |
| Mercer | 19,311 | 14,865 | 77.0% | 18,766 | 14,586 | 77.7% | 0.7% |
| Middlesex | 21,892 | 18,213 | 83.2% | 22,170 | 18,837 | 85.0% | 1.8% |
| Monmouth | 18,570 | 16,097 | 86.7% | 17,695 | 15,902 | 89.9% | 3.2% |
| Morris | 7,161 | 6,658 | 93.0% | 7,176 | 6,809 | 94.9% | 1.9% |
| Ocean | 18,251 | 16,312 | 89.4% | 17,816 | 16,164 | 90.7% | 1.4% |
| Passaic | 28,279 | 20,259 | 71.6% | 27,933 | 20,037 | 71.7% | 0.1% |
| Salem | 4,974 | 4,412 | 88.7% | 4,994 | 4,491 | 89.9% | 1.2% |
| Somerset | 7,697 | 6,088 | 79.1% | 6,700 | 5,643 | 84.2% | 5.1% |
| Sussex | 3,481 | 3,162 | 90.8% | 3,358 | 3,082 | 91.8% | 0.9% |
| Union | 24,214 | 19,988 | 82.5% | 23,821 | 19,702 | 82.7% | 0.2% |
| Warren | 3,669 | 3,225 | 87.9% | 3,503 | 3,111 | 88.8% | 0.9% |
| NJ TOTALS | 373,097 | 296,676 | 79.5% | 362,588 | 293,902 | 81.1% | 1.5% |

SOURCE: NJKiDS (Based on Federal Performance Measures - OCSE-157)

TABLE 15

OFFICE OF CHILD
SUPPORT SERVICES**OFFICE OF CHILD SUPPORT SERVICES**

State Summary

TITLE IV-D COLLECTIONS ON CURRENT SUPPORT

Comparison of November (FFY 14 vs. FFY 15)

| County Office | November 2013 | | | November 2014 | | | Increase or Decrease (-) from FFY 2014 to FFY 2015 |
|------------------|---------------------------|-----------------------------------|-----------------------|---------------------------|-----------------------------------|-----------------------|--|
| | Total Current Support Due | Total Current Support Distributed | Total Collection Rate | Total Current Support Due | Total Current Support Distributed | Total Collection Rate | |
| Atlantic | \$4,435,479 | \$2,879,465 | 64.9% | \$4,076,083 | \$2,619,203 | 64.3% | -0.7% |
| Bergen | \$9,807,071 | \$7,198,079 | 73.4% | \$9,232,625 | \$6,908,344 | 74.8% | 1.4% |
| Burlington | \$6,960,448 | \$4,722,457 | 67.8% | \$6,498,119 | \$4,444,980 | 68.4% | 0.6% |
| Camden | \$9,369,577 | \$5,429,098 | 57.9% | \$8,720,977 | \$5,152,804 | 59.1% | 1.1% |
| Cape May | \$1,380,830 | \$946,506 | 68.5% | \$1,248,298 | \$827,062 | 66.3% | -2.3% |
| Cumberland | \$3,813,987 | \$2,064,802 | 54.1% | \$3,336,800 | \$1,894,953 | 56.8% | 2.7% |
| Essex | \$14,111,779 | \$7,784,591 | 55.2% | \$13,210,959 | \$7,404,916 | 56.1% | 0.9% |
| Gloucester | \$4,785,380 | \$2,945,147 | 61.5% | \$4,462,287 | \$2,818,066 | 63.2% | 1.6% |
| Hudson | \$8,359,907 | \$5,530,764 | 66.2% | \$7,867,771 | \$5,262,216 | 66.9% | 0.7% |
| Hunterdon | \$1,547,837 | \$1,250,581 | 80.8% | \$1,509,254 | \$1,195,767 | 79.2% | -1.6% |
| Mercer | \$5,199,248 | \$3,233,900 | 62.2% | \$4,833,442 | \$3,051,334 | 63.1% | 0.9% |
| Middlesex | \$8,587,965 | \$5,643,070 | 65.7% | \$8,640,911 | \$5,838,142 | 67.6% | 1.9% |
| Monmouth | \$8,733,495 | \$5,979,343 | 68.5% | \$8,333,574 | \$5,770,448 | 69.2% | 0.8% |
| Morris | \$5,124,393 | \$3,728,526 | 72.8% | \$5,040,420 | \$3,601,570 | 71.5% | -1.3% |
| Ocean | \$7,989,106 | \$5,756,121 | 72.0% | \$7,486,762 | \$5,369,772 | 71.7% | -0.3% |
| Passaic | \$7,418,612 | \$4,451,470 | 60.0% | \$7,118,826 | \$4,313,022 | 60.6% | 0.6% |
| Salem | \$1,396,695 | \$836,183 | 59.9% | \$1,293,794 | \$789,866 | 61.1% | 1.2% |
| Somerset | \$4,022,836 | \$2,952,594 | 73.4% | \$3,609,645 | \$2,749,113 | 76.2% | 2.8% |
| Sussex | \$2,173,476 | \$1,592,611 | 73.3% | \$2,039,189 | \$1,519,549 | 74.5% | 1.2% |
| Union | \$7,938,467 | \$5,068,070 | 63.8% | \$7,440,995 | \$4,809,553 | 64.6% | 0.8% |
| Warren | \$1,603,078 | \$1,154,878 | 72.0% | \$1,475,009 | \$1,098,614 | 74.5% | 2.4% |
| NJ TOTALS | \$124,759,666 | \$81,148,253 | 65.0% | \$117,475,740 | \$77,439,293 | 65.9% | 0.9% |

SOURCE: NJKiDS (Based on Federal Performance Measures - OCSE-157)

TABLE 16

OFFICE OF CHILD
SUPPORT SERVICES**OFFICE OF CHILD SUPPORT SERVICES**

State Summary

TITLE IV-D CASES ARREARS COLLECTION REPORT

Comparison of November (FFY 14 vs. FFY 15)

| County Office | November 2013 | | | November 2014 | | | Increase or Decrease (-) from FFY 2014 to FFY 2015 |
|------------------|-----------------------------|---------------------------|--|-----------------------------|---------------------------|--|---|
| | Total Cases with Arrears | Total Amount Collected | Average Arrears Collection per Case | Total Cases with Arrears | Total Amount Collected | Average Arrears Collection per Case | |
| Atlantic | 8,849 | \$594,779 | \$67.21 | 8,823 | \$476,823 | \$54.04 | -\$13.17 |
| Bergen | 9,335 | \$994,426 | \$106.53 | 8,969 | \$843,469 | \$94.04 | -\$12.48 |
| Burlington | 9,804 | \$742,458 | \$75.73 | 9,582 | \$682,013 | \$71.18 | -\$4.55 |
| Camden | 19,956 | 1,193,981 | \$59.83 | 19,480 | \$933,239 | \$47.91 | -\$11.92 |
| Cape May | 2,453 | \$177,180 | \$72.23 | 2,447 | \$169,709 | \$69.35 | -\$2.88 |
| Cumberland | 9,644 | \$469,394 | \$48.67 | 9,379 | \$378,246 | \$40.33 | -\$8.34 |
| Essex | 30,685 | \$1,782,914 | \$58.10 | 30,348 | \$1,479,805 | \$48.76 | -\$9.34 |
| Gloucester | 7,973 | \$501,076 | \$62.85 | 7,919 | \$481,498 | \$60.80 | -\$2.04 |
| Hudson | 16,460 | \$1,159,005 | \$70.41 | 16,162 | \$1,135,386 | \$70.25 | -\$0.16 |
| Hunterdon | 1,113 | \$139,508 | \$125.34 | 1,099 | \$99,968 | \$90.96 | -\$34.38 |
| Mercer | 9,949 | \$716,553 | \$72.02 | 9,815 | \$557,374 | \$56.79 | -\$15.23 |
| Middlesex | 12,942 | \$908,233 | \$70.18 | 13,083 | \$850,539 | \$65.01 | -\$5.17 |
| Monmouth | 10,847 | \$973,822 | \$89.78 | 10,577 | \$846,739 | \$80.05 | -\$9.72 |
| Morris | 4,594 | \$576,485 | \$125.49 | 4,700 | \$365,879 | \$77.85 | -\$47.64 |
| Ocean | 10,945 | \$934,867 | \$85.41 | 10,874 | \$755,049 | \$69.44 | -\$15.98 |
| Passaic | 14,526 | \$1,072,288 | \$73.82 | 14,211 | \$851,716 | \$59.93 | -\$13.88 |
| Salem | 2,989 | \$134,841 | \$45.11 | 3,021 | \$127,669 | \$42.26 | -\$2.85 |
| Somerset | 3,921 | \$357,023 | \$91.05 | 3,699 | \$332,236 | \$89.82 | -\$1.24 |
| Sussex | 2,198 | \$247,731 | \$112.71 | 2,165 | \$230,551 | \$106.49 | -\$6.22 |
| Union | 14,346 | \$1,007,053 | \$70.20 | 14,014 | \$906,401 | \$64.68 | -\$5.52 |
| Warren | 2,247 | \$190,303 | \$84.69 | 2,136 | \$146,426 | \$68.55 | -\$16.14 |
| NJ TOTALS | 205,776 | \$14,873,920 | \$72.28 | 202,503 | \$12,650,735 | \$62.47 | -\$9.81 |

SOURCE: OCSE-157 Child Support Enforcement Annual Data Report

Table 17
WFNJ**WORK FIRST NEW JERSEY STATISTICAL SUMMARY****NOVEMBER 2014**

| COUNTY | EMPLOYMENT DIRECTED ACTIVITIES | | | EMPLOYED OPEN (WFNJ RECIPIENT) | SUPPORT SERVICES ON ACTIVE CASE | | CLOSED FOR EMPLOYMENT THIS MONTH | POST ASSISTANCE CHILD CARE |
|------------|--------------------------------|----------|--------|---|------------------------------------|---------------------------|---|-------------------------------------|
| | CWEP | ALL | JOB | | CHILD CARE | TRAINING REL. EXPENSES | | |
| | | OTHER | SEARCH | | | | | |
| | | TRAINING | | | | | | |
| ATLANTIC | 131 | 151 | 118 | 215 | 103 | 380 | 33 | 80 |
| BERGEN | 158 | 4 | 201 | 82 | 98 | 117 | 14 | 89 |
| BURLINGTON | 285 | 97 | 123 | 181 | 222 | 298 | 23 | 145 |
| CAMDEN | 555 | 306 | 36 | 377 | 559 | 893 | 78 | 430 |
| CAPE MAY | 13 | 30 | 20 | 51 | 10 | 23 | 3 | 12 |
| CUMBERLAND | 143 | 50 | 146 | 91 | 86 | 164 | 17 | 63 |
| ESSEX | 588 | 991 | 496 | 1,034 | 1,047 | 1,386 | 149 | 604 |
| GLOUCESTER | 76 | 17 | 51 | 134 | 72 | 56 | 42 | 116 |
| HUDSON | 429 | 588 | 70 | 445 | 565 | 1,001 | 93 | 477 |
| HUNTERDON | 7 | 0 | 17 | 10 | 10 | 1 | 4 | 7 |
| MERCER | 251 | 125 | 179 | 274 | 290 | 205 | 22 | 166 |
| MIDDLESEX | 114 | 91 | 190 | 211 | 169 | 200 | 38 | 168 |
| MONMOUTH | 93 | 55 | 91 | 129 | 160 | 146 | 12 | 128 |
| MORRIS | 25 | 2 | 22 | 49 | 35 | 22 | 9 | 39 |
| OCEAN | 59 | 348 | 0 | 80 | 122 | 132 | 21 | 102 |
| PASSAIC | 902 | 455 | 32 | 237 | 488 | 787 | 37 | 128 |
| SALEM | 3 | 28 | 9 | 47 | 37 | 61 | 6 | 39 |
| SOMERSET | 40 | 33 | 30 | 96 | 52 | 45 | 10 | 63 |
| SUSSEX | 28 | 3 | 22 | 19 | 24 | 26 | 4 | 15 |
| UNION | 347 | 101 | 25 | 171 | 186 | 252 | 39 | 143 |
| WARREN | 23 | 28 | 17 | 62 | 26 | 10 | 10 | 47 |
| STATE | 4,270 | 3,503 | 1,895 | 3,995 | 4,361 | 6,205 | 664 | 3,061 |

Data is derived from NJ Division of Family Development's FAMIS Reports RM064-01 & RM703-51, AdHoc Reports 5549 & 5598 and SDW Report WR00022WZ_CC

**DIVISION OF FAMILY DEVELOPMENT CURRENT PROGRAM STATISTICS
NOVEMBER 2014**

ACRONYMS

CASS: Consolidated Assistance and Support System

EMERGENCY ASSISTANCE (EA) - Payments to those eligible for WFNJ/TANF or WFNJ/GA, authorized during the 30 consecutive days immediately following the emergency (defined as a substantial loss of shelter, food, clothing, or household furnishings by fire, flood or other similar disaster) or if eligible individual or family is in an imminent or actual state of homelessness.

NJ SNAP - Formerly the Food Stamp Program, now known as **NJ SNAP** (NJ Supplemental Nutrition Assistance Program) authorized by Congress as a nutritional supplement program to provide low income households with more food of greater variety and better nutrition. Program eligibility is based on household income, resources, and expenses for medical, shelter, and dependent care. CWA staff refers certain recipients to the New Jersey Department of Labor for participation in the Food Stamp Employment and Training Program.

FAMIS: Family Assistance Management Information System

GAAS: General Assistance Automated System

NJKiDS: New Jersey Kids Deserve Support (Child Support Information Management System)

NJ MMIS SHARED DATA WAREHOUSE: The Shared Data Warehouse (SDW) is the repository for New Jersey's DFD and Medicaid data. Since 2003, OptumInsight has administered the SDW and provided access to the data through a reporting tool known as Business Objects.

OMEGA: Online Management of Economic Goal Achievement

SSI-EA: Supplemental Security Income-Emergency Assistance

WFNJ: Work First New Jersey - Fully implemented July 1, 1997, this is New Jersey's welfare reform program which responds to the requirements of the Federal Personal Responsibility and Work Opportunity Reconciliation Act (**PRWORA**) of 1996. PRWORA established Temporary Assistance for Needy Families (**TANF**) as the replacement for AFDC cash assistance. WFNJ includes two segments, **WFNJ/TANF** for families with children, and **WFNJ/GA** (General Assistance) for single adults and couples without dependent children. WFNJ emphasizes achieving self-sufficiency and limits lifetime receipt of financial assistance to a total of five years.

**DIVISION OF FAMILY DEVELOPMENT CURRENT PROGRAM STATISTICS
NOVEMBER 2014**

EXPLANATORY NOTES

The Department of Human Services Division of Family Development provides basic income and an opportunity to achieve self-sufficiency for individuals and families served by the Division's programs. The Division provides leadership, direction and supervision to those public agencies responsible for administering those programs and plans for and develops policies to promote self-sufficiency.

WFNJ Statistical Summary (Table 17)

Employment Directed Activities (EDA) - From Activities Summary Report (OMEGA report # RM064). Unduplicated count of persons participating in Community Work Experience Program (CWEP), All Other Training, or Job Search.

Number of Persons Employed This Month, Still Receiving TANF Individuals with open "empl" activity on OMEGA. Ad hoc report.

Participants Receiving Child Care Services - From Issuance Disbursement Summary (OMEGA report # RM703). Total number of active participants who show receipt of **Child Care**.

Number of Persons Closed on FAMIS Due to Employment - From FAMIS report #5549-RM-2.

Post TANF and Receiving Child Care - Persons no longer in receipt of TANF but still receiving child care. From Share Data Warehouse Child Care case count based on Child Care payments (SDW report WR00022WZ_CC).