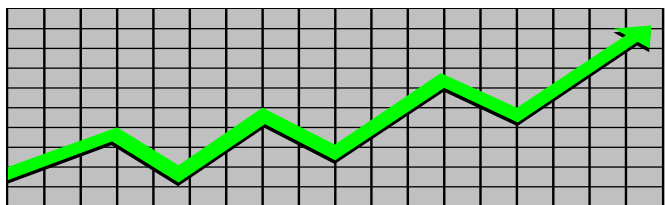


**State of New Jersey**  
**Department of Human Services**  
**Division of Family Development**

---

# **CURRENT PROGRAM STATISTICS**



---

**December 2024**  
**Natasha Johnson, Assistant Commissioner**

## **TABLE OF CONTENTS**

### **HIGHLIGHTS:**

<b>WFNJ/TANF</b>	<b>ii</b>
<b>NJ SNAP</b>	<b>ii</b>
<b>EMERGENCY ASSISTANCE</b>	<b>ii</b>
<b>GENERAL ASSISTANCE</b>	<b>iii</b>
GA Emergency Assistance	iii
GA Program	iii
<b>CHILD SUPPORT SERVICES</b>	<b>iii</b>
<b>WORK FIRST NEW JERSEY (WFNJ)</b>	<b>iii</b>
<b>STATISTICS- BY STATE &amp; COUNTY</b>	<b>1</b>
Table 1: WFNJ/TANF Families & Persons (NJ Statewide) December 2022 to 2024	1
Table 2: WFNJ/TANF Families (by County)- December 2024	2
Table 2B: WFNJ/TANF Persons, Adults, & Children (by County)- December 2024	3
Table 3: TANF Work Participation Rates Over 12 Month Period (by County)- December 2024	4
Table 4: TANF Work Participation Rates Over 12 Month Period (NJ Statewide)- December 2024	5
Table 5: NJ SNAP Households/Persons (NJ Statewide) December 2022 to 2024	6
Table 6: NJ SNAP Recipient Trends (NJ Statewide) December 2022 to 2024	7
Table 7: NJ SNAP Households/Persons (by County)- December 2024	8
Table 8: Emergency Assistance Program (NJ Statewide) December 2022 to 2024	9
Table 9: Emergency Assistance Program (by County)- December 2024	10
Table 10: General Assistance Program (NJ Statewide) December 2022 to 2024	11
Table 11: General Assistance Program (by County)- December 2024	12
Table 12: Child Support Services Distributions (NJ Statewide) FFY 2025	13
Table 13: Child Support Services Paternities Established- December 2024	14
Table 14: Child Support Services Cases With Orders- December 2024	15
Table 15: Child Support Services Collections On Current Support- December 2024	16
Table 16: Child Support Services Cases With Payments On Arrears- December 2024	17
Table 17: WFNJ Statistical Summary- December 2024	18
<b>ACRONYMS</b>	<b>19</b>
<b>EXPLANATORY NOTES</b>	<b>20</b>
WFNJ Statistical Summary (Table 17)	20

## **DIVISION OF FAMILY DEVELOPMENT CURRENT PROGRAM STATISTICS**

### **DECEMBER 2024**

---

Each month the Division of Family Development publishes its program statistics for: WFNJ/TANF, NJ SNAP, Emergency Assistance, General Assistance, and Child Support Services. When possible, information is provided separately for children and adults. Many tables also provide trend data with information broken down by county for readers to consider. This report is compiled and prepared by The Bureau of Research & Reporting.

---

#### **WFNJ/TANF**

- As of the end of December, the TANF caseload had decreased by 584 cases, from 11,861 in December 2023 to 11,277 in December 2024; a decrease of -4.9%.
- The counties with caseloads that increased the most since December 2023 were Gloucester (13.4%), Middlesex (6.4%), and Morris (5.3%).
- The counties with caseloads that decreased the most since December 2023 were Hunterdon (-42.1%), Sussex (-25%), and Bergen (-22.4%).
- Of the WFNJ/TANF cases, 2,311 or 20.5% were child-only in December 2024.
- The counties with the most child-only cases were Camden (382), Hudson (318), and Essex (229).
- Hudson (5,410), Essex (4,263), and Camden (3,998) counties had the greatest number of persons receiving TANF in December 2024.

#### **NJ SNAP (Formerly FOOD STAMPS)**

- In December 2024, there were 443,200 households receiving NJ SNAP benefits. The number of NJ SNAP households increased by 17,246 or 4%, since December 2023.
- There were 829,468 persons receiving NJ SNAP benefits as of December 2024; an increase of 14,188 or 1.7% since December 2023.
- The counties having the highest SNAP caseload increase since December 2023 were Essex (12.9%), Morris (9.3%), and Gloucester (7.9%).
- The counties having the highest SNAP caseload decrease since December 2023 were Union (-3.5%), Atlantic (-1.5%), and Hunterdon (-0.4%).

#### **EMERGENCY ASSISTANCE**

- There were 1,790 TANF families receiving Emergency Assistance (EA) in December 2024; an increase of 342 or 23.6% since December 2023.
- In December 2024, EA payments were made for 609 SSI recipients.

## **DIVISION OF FAMILY DEVELOPMENT CURRENT PROGRAM STATISTICS DECEMBER 2024**

- There were 2,252 GA cases with Emergency Assistance payments in December 2024; an increase of 382 or 20.4% since December 2023.
- The counties that showed the highest percent increase in Emergency Assistance payments were Salem (600%), Passaic (257.8%), and Somerset (109%).
- The counties that showed the highest percent decrease in Emergency Assistance payments were Hunterdon (-60%), Monmouth (-43%), and Atlantic (-29.1%).

### **GENERAL ASSISTANCE**

- The total numbers of cases receiving GA has increased from 13,617 to 16,388 since December 2023; an increase of 20.3%.
- There were 12,349 Employable GA and 4,039 Unemployable GA cases in December 2024.
- The counties that showed a percent increase for GA cases were Salem (56.4%), Cape May (48.4%), and Passaic (46%) since December 2023.
- The counties that showed the highest percent decrease for GA cases since December 2023 were Hunterdon (-32.3%), Ocean (-4.3%), and Sussex (-3.6%).
- In December 2024, GA cases showed a 2.06% increase since November 2024.

### **CHILD SUPPORT SERVICES (QUARTERLY REPORT)**

- The total collection for the Child Support Services Program was about \$258 million from October 2024 to December 2024; an increase of 0.8% over the same period from FFY 2024.
- Total distributions decreased -0.7% from December 2023.

### **WORK FIRST NEW JERSEY (WFNJ)**

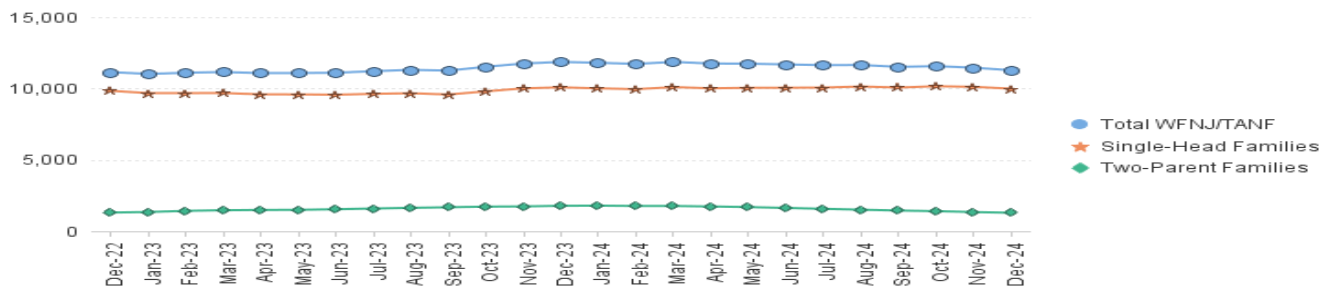
- During the report month of December 2024, there were 651 families in which at least one member was employed and an additional 158 families whose WFNJ assistance cases were closed due to employment - related earnings.
- The three counties with the greatest number of employed active WFNJ recipients were: Hudson (130), Essex (128), and Camden (62).
- There were 235 former TANF cases receiving post-TANF support in the form of child care assistance.

TABLE 1:

WFNJ/TANF  
PROGRAMSTATEWIDE NUMBER OF APPLICATIONS AND TERMINATIONS DURING DECEMBER 2024  
NUMBER OF ELIGIBLE FAMILIES & PERSONS RECEIVING WFNJ/TANF FOR DECEMBER 2024

## DECEMBER 2022 THROUGH DECEMBER 2024

		Cases Added	Cases Closed	Child-Only Cases ‡	Total Single-Head Families	2-Parent Families	Total WFNJ/TANF Families	%CHNG (1 Yr.)	Total Persons	%CHNG (1 Yr.)	Adults	Children
2022	DEC	747	792	2,578	9,837	1,308	11,145	15.4%	30,064	19.4%	9,875	20,189
2022	Average	699	623	2,701	9,755	939	10,693		28,466		8,931	19,535
2023	JAN	669	792	2,560	9,674	1,346	11,020	12.0%	29,683	15.1%	9,806	19,877
	FEB	760	717	2,531	9,676	1,426	11,102	9.8%	30,019	12.7%	9,997	20,022
	MAR	822	864	2,565	9,683	1,470	11,153	7.5%	30,069	9.6%	10,058	20,011
	APR	739	858	2,548	9,587	1,490	11,077	5.9%	29,826	7.5%	10,019	19,807
	MAY	825	813	2,523	9,586	1,498	11,084	4.4%	29,863	6.0%	10,059	19,804
	JUN	827	855	2,500	9,562	1,540	11,102	4.0%	29,926	5.8%	10,142	19,784
	JUL	823	764	2,487	9,624	1,590	11,214	2.7%	30,222	4.1%	10,317	19,905
	AUG	887	841	2,445	9,666	1,638	11,304	2.5%	30,533	3.7%	10,497	20,036
	SEP	912	1,097	2,410	9,577	1,677	11,254	2.0%	30,443	3.2%	10,521	19,922
	OCT	944	891	2,463	9,800	1,722	11,522	4.3%	31,139	5.2%	10,781	20,358
	NOV	859	795	2,495	10,011	1,737	11,748	6.1%	31,776	6.4%	10,990	20,786
	DEC	900	836	2,484	10,080	1,781	11,861	6.4%	32,067	6.7%	11,158	20,909
2023	Average	831	844	2,501	9,711	1,576	11,287		30,464		10,362	20,102
2024	JAN	819	879	2,456	10,010	1,790	11,800	7.1%	31,992	7.8%	11,134	20,858
	FEB	743	865	2,451	9,953	1,768	11,721	5.6%	31,775	5.8%	11,038	20,737
	MAR	784	797	2,453	10,095	1,767	11,862	6.4%	32,088	6.7%	11,176	20,912
	APR	832	944	2,414	10,014	1,733	11,747	6.0%	31,674	6.2%	11,066	20,608
	MAY	805	869	2,435	10,047	1,689	11,736	5.9%	31,556	5.7%	10,990	20,566
	JUN	816	920	2,444	10,054	1,631	11,685	5.3%	31,338	4.7%	10,872	20,466
	JUL	802	853	2,383	10,064	1,569	11,633	3.7%	31,312	3.6%	10,819	20,493
	AUG	864	932	2,370	10,138	1,508	11,646	3.0%	31,376	2.8%	10,784	20,592
	SEP	759	890	2,345	10,066	1,448	11,514	2.3%	30,858	1.4%	10,617	20,241
	OCT	894	894	2,352	10,157	1,406	11,563	0.4%	30,962	-0.6%	10,617	20,345
	NOV	797	936	2,336	10,115	1,342	11,457	-2.5%	30,753	-3.2%	10,463	20,290
	DEC	670	849	2,311	9,987	1,290	11,277	-4.9%	30,319	-5.5%	10,256	20,063
2024	Average	799	886	2,396	10,058	1,578	11,637		31,334		10,819	20,514

NJ STATEWIDE  
Eligible Families Receiving WFNJ/TANF  
DECEMBER 2022 THROUGH DECEMBER 2024

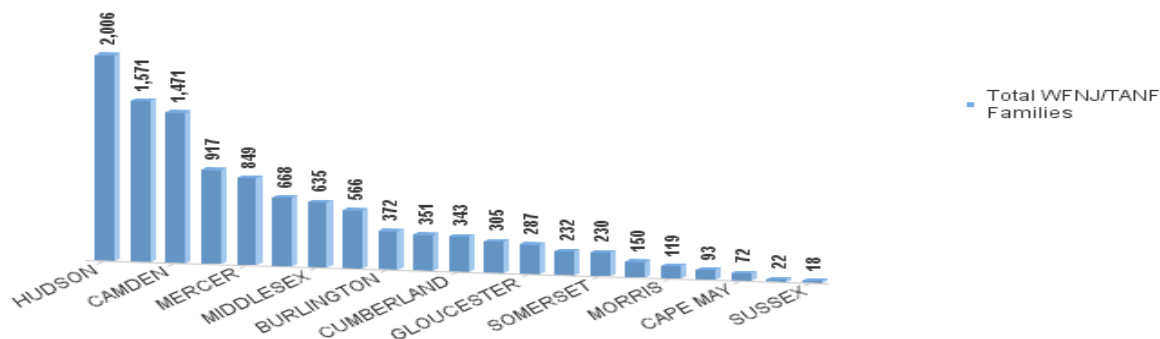
Data is derived from NJ MMIS Shared Data Warehouse Issuance files.  
Effective July 2013 this data query source was converted to the SDW

‡ Child-only cases are defined as families in which no eligible adult receives TANF program benefits, yet the family continues to be headed by at least one of the biological parents, or grandparents, or other appropriate adult.

**TABLE 2:**  
**WFNJ/TANF**  
**PROGRAM**  
**NUMBER OF APPLICATIONS AND TERMINATIONS BY COUNTY DURING DECEMBER 2024**  
**NUMBER OF ELIGIBLE FAMILIES RECEIVING WFNJ/TANF FOR DECEMBER 2024**

County	Cases Added	Cases Closed **	Child-Only Cases ‡	1-Adult Cases	Total Single-Head Families	2-Parent Families	Total WFNJ/TANF Families	%CHNG (3 Mon)	%CHNG (1 Yr.)
ATLANTIC	22	39	173	346	519	47	566	-3.9%	-8.0%
BERGEN	26	40	55	209	264	41	305	-9.0%	-22.4%
BURLINGTON	35	50	91	248	339	33	372	-1.1%	-2.6%
CAMDEN	58	97	382	970	1,352	119	1,471	-4.5%	-8.0%
CAPE MAY	7	13	20	48	68	4	72	-5.3%	-13.3%
CUMBERLAND	30	32	100	215	315	28	343	-0.9%	0.6%
ESSEX	91	103	229	1,028	1,257	314	1,571	1.7%	-12.5%
GLOUCESTER	30	36	70	191	261	26	287	0.3%	13.4%
HUDSON	108	137	318	1,461	1,779	227	2,006	-2.8%	1.9%
HUNTERDON	3	1	4	15	19	3	22	-29.0%	-42.1%
MERCER	40	72	177	588	765	84	849	-6.2%	-6.4%
MIDDLESEX	44	43	173	414	587	48	635	-2.9%	6.4%
MONMOUTH	20	14	51	171	222	10	232	0.0%	-10.1%
MORRIS	10	10	28	72	100	19	119	-5.6%	5.3%
OCEAN	20	22	57	258	315	36	351	1.4%	3.2%
PASSAIC	40	44	180	661	841	76	917	-1.6%	-0.2%
SALEM	20	20	31	106	137	13	150	-3.8%	-3.2%
SOMERSET	17	18	48	167	215	15	230	-2.1%	-5.7%
SUSSEX	4	7	4	12	16	2	18	-28.0%	-25.0%
UNION	39	44	98	432	530	138	668	-1.2%	-10.6%
WARREN	6	7	22	64	86	7	93	4.5%	3.3%
<b>NJ Total</b>	<b>670</b>	<b>849</b>	<b>2,311</b>	<b>7,676</b>	<b>9,987</b>	<b>1,290</b>	<b>11,277</b>	<b>-2.5%</b>	<b>-4.9%</b>

**Total WFNJ/TANF Families**  
**DECEMBER 2024**  
**By County**



Data is derived from NJ MMIS Shared Data Warehouse Issuance files.  
Effective July 2013 this data query source was converted to the SDW

‡ Child-only cases are defined as families in which no eligible adult receives TANF program benefits, yet the family continues to be headed by at least one of the biological parents, or grandparents, or other appropriate adult

\*\* 'Cases closed' include cases that received a benefit in the prior month, but did not receive any TANF benefit for the report month.

Δ=higher caseload % change

\*=lower caseload % change

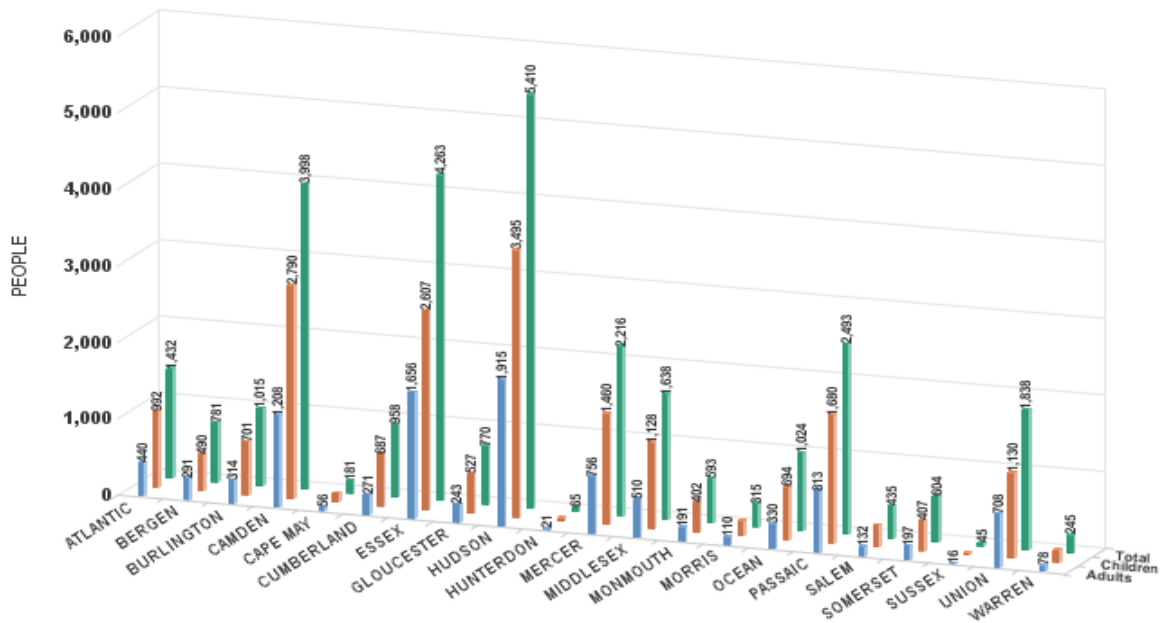
TABLE 2B :

WFNJ/TANF  
PROGRAMNUMBER OF PARTICIPATING PERSONS, ADULTS, AND CHILDREN  
BY COUNTY FOR DECEMBER 2024**PERSONS**

County	Adults	Children	Child/Adult Ratio	Total Persons	% Chng (1 Yr)	Persons Per Case
ATLANTIC	440	992	2.25	1,432	-9.2%	2.53
BERGEN	291	490	1.68	781	-23.4%	* 2.56
BURLINGTON	314	701	2.23	1,015	0.3%	2.73
CAMDEN	1,208	2,790	2.31	3,998	-7.0%	2.72
CAPE MAY	56	125	2.23	181	-15.4%	2.51
CUMBERLAND	271	687	2.54	958	0.2%	2.79
ESSEX	1,656	2,607	1.57	4,263	-14.8%	2.71
GLOUCESTER	243	527	2.17	770	11.1%	Δ 2.68
HUDSON	1,915	3,495	1.83	5,410	2.5%	2.70
HUNTERDON	21	44	2.10	65	-41.4%	* 2.95
MERCER	756	1,460	1.93	2,216	-9.3%	2.61
MIDDLESEX	510	1,128	2.21	1,638	6.2%	Δ 2.58
MONMOUTH	191	402	2.10	593	-13.2%	2.56
MORRIS	110	205	1.86	315	0.0%	2.65
OCEAN	330	694	2.10	1,024	6.3%	Δ 2.92
PASSAIC	813	1,680	2.07	2,493	-1.5%	2.72
SALEM	132	303	2.30	435	2.1%	2.90
SOMERSET	197	407	2.07	604	-5.2%	2.63
SUSSEX	16	29	1.81	45	-19.6%	* 2.50
UNION	708	1,130	1.60	1,838	-10.8%	2.75
WARREN	78	167	2.14	245	-0.8%	2.63
NJ Total	10,256	20,063	1.96	30,319	-5.5%	2.69

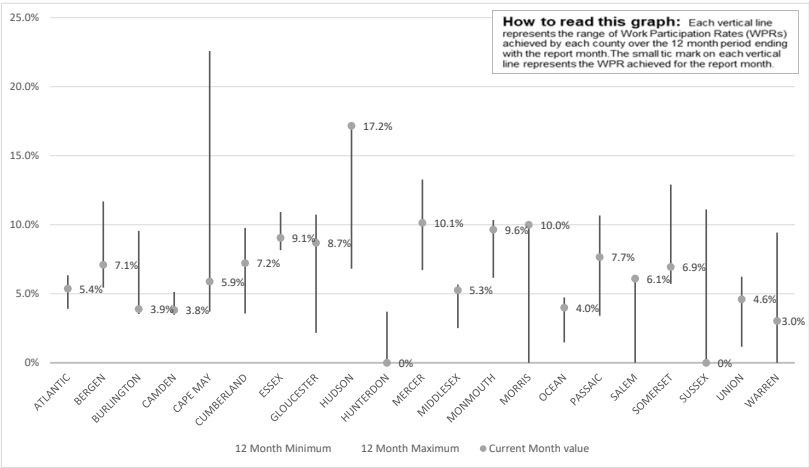
Δ=higher caseload % change

\*=lower caseload % change



Data is derived from NJ MMIS Shared Data Warehouse Issuance files.  
Effective July 2013 this data query source was converted to the SDW

TABLE 3 :  
Work Participation Rates Achieved Over 12 Month Period  
Ending with DECEMBER 2024

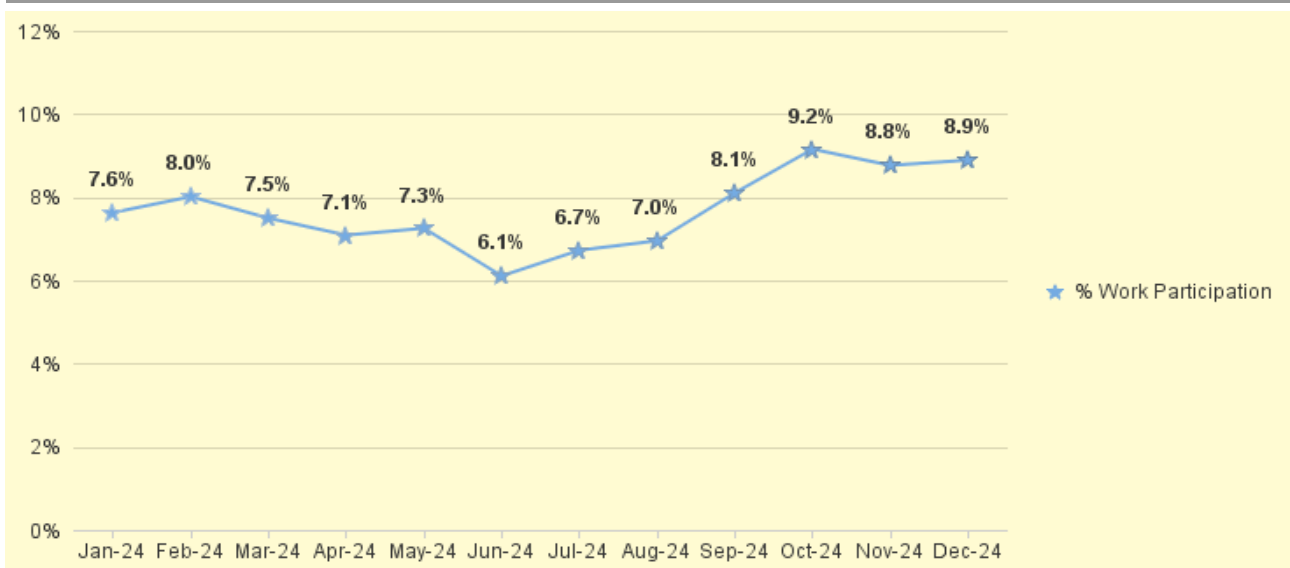


Data is derived from NJ MMS Shared Data Warehouse Issuance files.  
Effective July 2013 this data query source was converted to the SDW



TABLE 4 :

**WFNJ/TANF Work Participation Rates  
for 12-Month Period Ending with DECEMBER 2024 Statewide**



\* The Work Participation rate measures the number of countable Temporary Assistance for Needs Families (TANF) participants based on federal formula. The reported rate is considered to be preliminary until officially calculated by the federal government soon after the close of each federal fiscal year.

TABLE 5 :

NJ SNAP  
(FOOD STAMPS)

NUMBER OF PARTICIPATING HOUSEHOLDS, PERSONS, ADULTS  
AND CHILDREN FOR DECEMBER 2024 (STATEWIDE)

DECEMBER 2022 THROUGH DECEMBER 2024

		HOUSEHOLDS				PERSONS				Age 60+	People with a disability
		WFNJ/ TANF	Other low income	Total	% CHNG (1 YR)	Adults	Children	TOTAL	% CHNG (1 YR)		
2022	DEC	11,094	393,042	404,136	-13.7%	443,837	340,993	784,830	-13.1%	155,061	227,586
2022	Average	11,011	418,196	429,207		469,290	362,512	831,802		154,511	227,191
2023	JAN	11,120	388,312	399,432	-14.7%	438,140	336,442	774,582	-14.2%	153,633	223,462
	FEB	10,806	388,213	399,019	-13.7%	437,832	336,772	774,604	-12.9%	154,374	223,539
	MAR	12,027	407,914	419,941	-10.0%	460,274	373,470	833,744	-7.1%	156,031	227,136
	APR	11,987	408,628	420,615	-6.6%	460,514	370,535	831,049	-4.1%	156,584	227,434
	MAY	11,026	397,178	408,204	-6.0%	446,453	341,774	788,227	-5.6%	157,317	225,010
	JUN	11,193	399,666	410,859	-2.9%	449,079	343,009	792,088	-2.7%	157,999	225,250
	JUL	11,874	408,109	419,983	2.0%	458,990	363,129	822,119	3.4%	158,680	226,431
	AUG	11,445	398,827	410,272	-5.5%	448,110	340,718	788,828	-10.0%	158,893	224,313
	SEP	11,607	397,739	409,346	1.6%	446,467	338,291	784,758	-0.6%	160,208	225,665
	OCT	11,862	399,663	411,525	4.1%	448,591	338,651	787,242	3.2%	161,651	226,946
	NOV	11,994	404,810	416,804	4.9%	453,939	342,920	796,859	3.7%	162,683	227,481
	DEC	12,360	413,594	425,954	5.4%	464,039	351,241	815,280	3.9%	164,787	233,859
2023	Average	11,608	401,054	412,663		451,036	348,079	799,115		158,570	226,377
2024	JAN	12,147	413,384	425,531	6.5%	462,636	348,128	810,764	4.7%	164,794	231,669
	FEB	11,859	416,486	428,345	7.3%	465,489	348,007	813,496	5.0%	165,676	231,340
	MAR	12,058	426,988	439,046	4.5%	476,761	357,715	834,476	0.1%	167,855	233,743
	APR	11,717	426,510	438,227	4.2%	474,957	354,424	829,381	-0.2%	168,166	233,544
	MAY	11,715	431,264	442,979	8.5%	479,707	356,729	836,436	6.1%	169,629	234,656
	JUN	11,848	435,764	447,612	8.9%	484,805	359,806	844,611	6.6%	171,199	235,765
	JUL	11,626	432,725	444,351	5.8%	481,340	354,315	835,655	1.6%	171,322	234,963
	AUG	12,047	438,849	450,896	9.9%	488,286	358,835	847,121	7.4%	172,882	236,688
	SEP	11,733	432,439	444,172	8.5%	480,588	350,383	830,971	5.9%	172,370	235,245
	OCT	11,714	435,963	447,677	8.8%	484,036	353,435	837,471	6.4%	173,563	236,826
	NOV	11,621	435,899	447,520	7.4%	483,897	354,051	837,948	5.2%	174,605	237,983
	DEC	11,102	432,098	443,200	4.0%	479,225	350,243	829,468	1.7%	174,494	242,096
2024	Average	11,766	429,864	441,630		478,477	353,839	832,317		170,546	235,377

This Table is based on those Households & Persons that received SNAP issuances (benefits) during the month

Data is derived from NJ MMIS Shared Data Warehouse.  
Effective July 2013 this data query source was converted to the SDW.

\* Age 60+ and People with a disability columns are independent subsets of total persons. An individual might appear in both columns

TABLE 6:

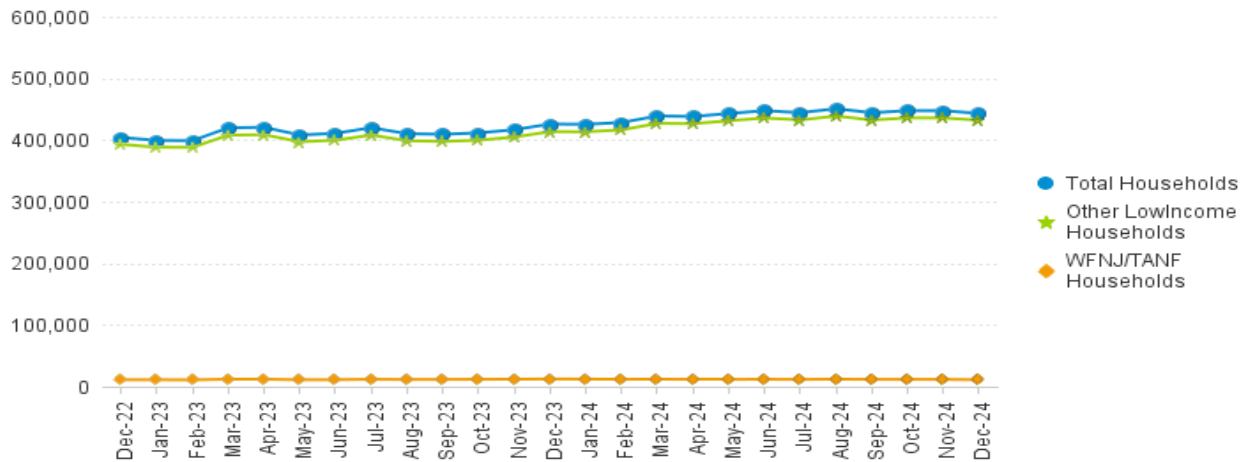
NJ SNAP

TRENDS FOR PARTICIPATING HOUSEHOLDS &amp; PERSONS

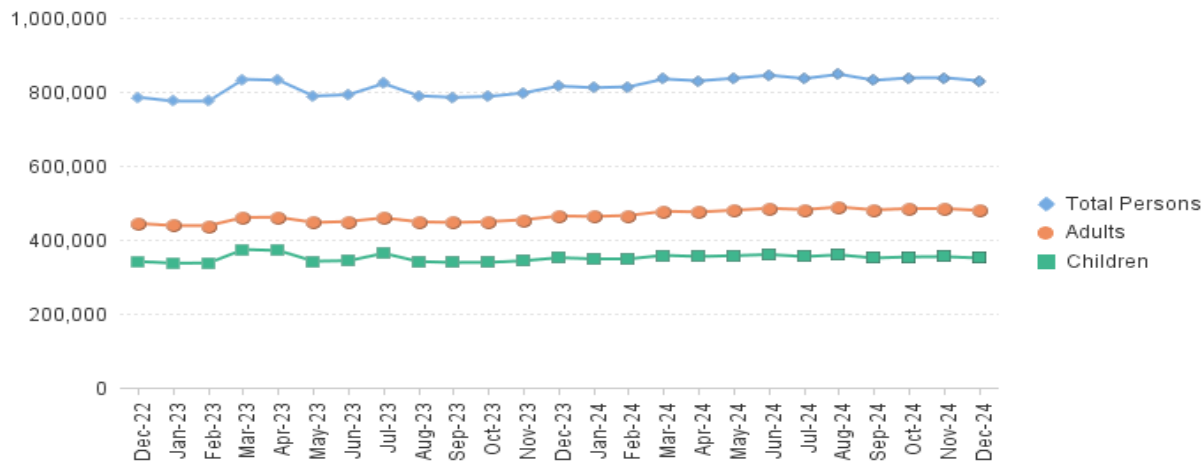
(FOOD STAMPS)

DECEMBER 2022 THROUGH DECEMBER 2024 (STATEWIDE)

## Statewide NJ SNAP Households: DECEMBER 2022 Through DECEMBER 2024



## Statewide NJ SNAP Persons: DECEMBER 2022 Through DECEMBER 2024



Data is derived from NJ MMIS Shared Data Warehouse Issuance files.

Effective July 2013 this data query source was converted to the SDW

TABLE 7 :  
NJ SNAP

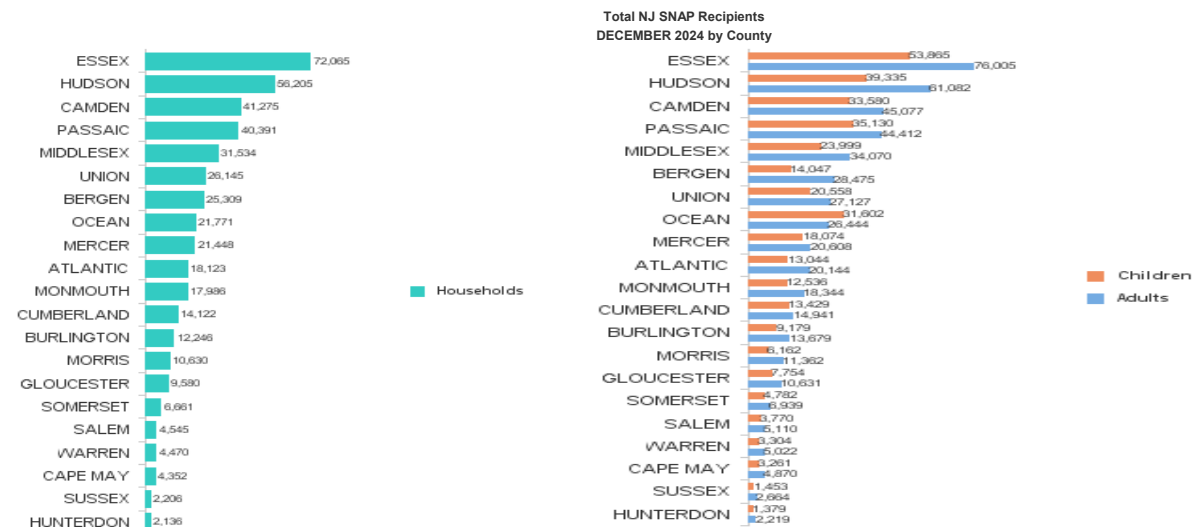
## NUMBER OF PARTICIPATING HOUSEHOLDS, PERSONS, ADULTS

## AND CHILDREN BY COUNTY FOR DECEMBER 2024

County	HOUSEHOLDS				PERSONS				Age 60+	People with a disability
	WFNJ/ TANF	Other low income	TOTAL	% Chng (1 Yr)	Adults	Children	TOTAL	% Chng (1 Yr)		
ATLANTIC	536	17,587	18,123	-1.5%	20,144	13,044	33,188	-3.9%	7,020	10,348
BERGEN	322	24,987	25,309	3.9%	28,475	14,047	42,522	3.3%	15,759	17,821
BURLINGTON	570	11,676	12,246	3.4%	13,679	9,179	22,858	0.6%	4,271	7,282
CAMDEN	1,384	39,891	41,275	2.9%	45,077	33,580	78,657	0.7%	12,485	21,053
CAPE MAY	79	4,273	4,352	1.9%	4,870	3,261	8,131	0.2%	1,479	2,365
CUMBERLAND	325	13,797	14,122	1.2%	14,941	13,429	28,370	-0.9%	4,126	7,717
ESSEX	1,705	70,360	72,065	12.9%	76,005	53,865	129,870	9.1%	22,909	33,398
GLOUCESTER	276	9,304	9,580	7.9%	10,631	7,754	18,385	7.4%	3,412	6,496
HUDSON	1,799	54,406	56,205	0.1%	61,082	39,335	100,417	-2.8%	24,684	30,333
HUNTERDON	30	2,106	2,136	-0.4%	2,219	1,379	3,598	0.5%	894	1,278
MERCER	814	20,634	21,448	6.5%	20,608	18,074	38,682	4.7%	6,292	11,014
MIDDLESEX	626	30,908	31,534	5.5%	34,070	23,999	58,069	4.8%	15,679	19,750
MONMOUTH	242	17,744	17,986	1.7%	18,344	12,536	30,880	0.1%	7,711	10,477
MORRIS	127	10,503	10,630	9.3%	11,362	6,162	17,524	8.0%	5,761	6,361
OCEAN	327	21,444	21,771	1.1%	26,444	31,602	58,046	-2.0%	8,080	11,904
PASSAIC	888	39,503	40,391	4.0%	44,412	35,130	79,542	1.9%	17,174	20,867
SALEM	149	4,396	4,545	5.4%	5,110	3,770	8,880	0.8%	1,353	2,445
SOMERSET	197	6,464	6,661	4.6%	6,939	4,782	11,721	2.7%	3,034	4,165
SUSSEX	25	2,181	2,206	0.7%	2,664	1,453	4,117	-0.8%	1,019	1,638
UNION	578	25,567	26,145	-3.5%	27,127	20,558	47,685	-4.1%	9,718	12,622
WARREN	103	4,367	4,470	5.0%	5,022	3,304	8,326	2.8%	1,634	2,762
<b>NJ TOTAL</b>	<b>11,102</b>	<b>432,098</b>	<b>443,200</b>	<b>4.0%</b>	<b>479,225</b>	<b>350,243</b>	<b>829,468</b>	<b>1.7%</b>	<b>174,494</b>	<b>242,096</b>

Δ=higher caseload % change

\*=lower caseload % change



Data is derived from NJ MMIS Shared Data Warehouse.

Effective July 2013 this data query source was converted to the SDW.

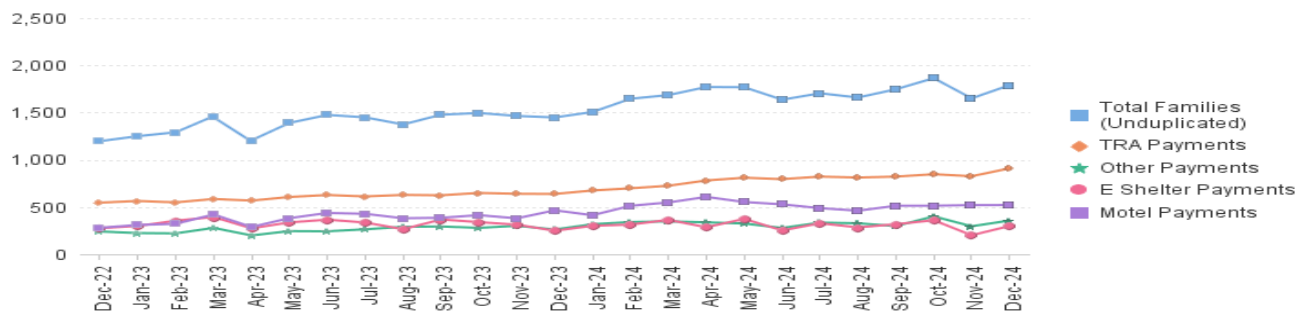
\* Age 60+ and People with a disability columns are independent subsets of total persons. An individual might appear in both columns

**TABLE 8 :  
EMERGENCY  
ASSISTANCE  
(STATEWIDE)**

**TOTAL NUMBER OF ELIGIBLE FAMILIES RECEIVING EMERGENCY ASSISTANCE PAYMENTS  
DECEMBER 2022 THROUGH DECEMBER 2024 - STATEWIDE**

		Total WFNJ/EA Families (Undupl)	% CHNG (1 YR)	Temp Rent Asst. Payments (Undupl)	% CHNG (1 YR)	Motel Housing Payments (Undupl)	% CHNG (1 YR)	Shelter/Transitional Housing Payments (Undupl)	% CHNG (1 YR)	Other WFNJ/EA Payments (Undupl)	% CHNG (1 YR)
2022	DEC	1,197	-6.3%	546	-33.9%	280	120.5%	276	10.4%	241	50.6%
2022	Average	1,296		723		204		289		230	
2023	JAN	1,250	4.5%	564	-20.1%	310	148.0%	299	4.9%	224	19.8%
	FEB	1,291	6.0%	549	-23.8%	322	113.2%	355	29.6%	221	5.2%
	MAR	1,462	4.7%	585	-24.3%	421	112.6%	394	18.7%	279	3.0%
	APR	1,206	-5.9%	568	-27.8%	289	72.0%	274	3.4%	199	-11.9%
	MAY	1,390	1.0%	606	-23.5%	382	109.9%	337	2.7%	245	2.5%
	JUN	1,475	6.3%	627	-21.7%	437	95.1%	366	32.1%	243	12.5%
	JUL	1,449	8.7%	612	-24.6%	428	101.9%	336	38.8%	264	3.5%
	AUG	1,374	-8.9%	628	-26.0%	381	56.8%	265	-26.0%	290	19.3%
	SEP	1,477	7.2%	624	-16.5%	386	76.3%	368	9.2%	294	46.3%
	OCT	1,495	23.9%	649	9.6%	414	76.9%	340	26.9%	279	3.7%
	NOV	1,464	36.6%	640	15.7%	380	81.0%	313	40.4%	301	48.3%
	DEC	1,448	21.0%	638	16.8%	465	66.1%	249	-9.8%	262	8.7%
2023	Average	1,398		608		385		325		258	
2024	JAN	1,506	20.5%	675	19.7%	413	33.2%	301	0.7%	318	42.0%
	FEB	1,646	27.5%	698	27.1%	513	59.3%	314	-11.5%	341	54.3%
	MAR	1,685	15.3%	725	23.9%	548	30.2%	364	-7.6%	348	24.7%
	APR	1,770	46.8%	781	37.5%	607	110.0%	286	4.4%	338	69.8%
	MAY	1,768	27.2%	810	33.7%	553	44.8%	374	11.0%	325	32.7%
	JUN	1,636	10.9%	795	26.8%	528	20.8%	252	-31.1%	278	14.4%
	JUL	1,704	17.6%	822	34.3%	488	14.0%	328	-2.4%	335	26.9%
	AUG	1,659	20.7%	812	29.3%	461	21.0%	284	7.2%	328	13.1%
	SEP	1,746	18.2%	822	31.7%	513	32.9%	318	-13.6%	298	1.4%
	OCT	1,864	24.7%	847	30.5%	514	24.2%	360	5.9%	401	43.7%
	NOV	1,650	12.7%	826	29.1%	520	36.8%	201	-35.8%	296	-1.7%
	DEC	1,790	23.6%	909	42.5%	521	12.0%	299	20.1%	357	36.3%
2024	Average	1,702		794		515		307		330	

**NJ STATEWIDE  
Families Receiving Emergency Assistance  
DECEMBER 2022 THROUGH DECEMBER 2024**



WFNJ/EA data is derived from NJ MMIS Shared Data Warehouse.

Effective July 2013 this data query source was converted to the SDW.

\* Effective Feb '11 Transitional Housing Payments were removed from 'Other EA Payments' and added to 'Shelter Payments'.

TABLE 9 :

**EMERGENCY ASSISTANCE (BY COUNTY)**

**TOTAL NUMBER OF ELIGIBLE FAMILIES RECEIVING EMERGENCY ASSISTANCE PAYMENTS BY COUNTY (UNDULICATED CASES) FOR DECEMBER 2024**

County	TOTAL WFNJ/EA Families (Undupl)	% CHNG From DEC 23		Temp Rent Asst. Payments (Undupl)	Motel Housing Payments (Undupl)	Shelter/Transitional Housing Payments (Undupl)	Other WFNJ/EA Payments (Undupl)	SSI Recipients Receiving EA **
ATLANTIC	47	11.9%		33	13	0	8	29
BERGEN	41	5.1%		24	2	8	12	16
BURLINGTON	142	158.2%	Δ	6	117	19	5	2
CAMDEN	85	14.9%		15	33	35	12	20
CAPE MAY	25	-3.8%	*	6	18	0	1	14
CUMBERLAND	9	80.0%	Δ	0	0	6	3	1
ESSEX	124	9.7%		52	0	62	14	13
GLOUCESTER	24	50.0%		2	8	7	13	10
HUDSON	450	28.2%		319	102	42	89	125
HUNTERDON	1	-80.0%	*	0	1	0	1	1
MERCER	203	17.3%		111	65	28	53	114
MIDDLESEX	90	32.4%		51	21	5	27	62
MONMOUTH	58	28.9%		0	33	29	7	26
MORRIS	28	75.0%	Δ	13	10	2	5	31
OCEAN	60	13.2%		32	28	0	12	20
PASSAIC	215	54.7%		157	16	34	41	61
SALEM	5	25.0%		1	1	0	3	3
SOMERSET	82	10.8%		46	25	8	27	44
SUSSEX	2	0%		0	0	1	1	3
UNION	86	-37.7%	*	35	22	13	19	13
WARREN	13	30.0%		6	6	0	4	1
<b>NJ Total</b>	<b>1,790</b>	<b>23.6%</b>		<b>909</b>	<b>521</b>	<b>299</b>	<b>357</b>	<b>609</b>

Δ=higher caseload % change

\*=lower caseload % change

\*\* SSI-EA includes pay codes 22 and 24, data is derived from NJ Division of Family Development FAMIS Report #FM430-03A

WFNJ/EA data is derived from NJ MMIS Shared Data Warehouse.

Effective July 2013 this data query source was converted to the SDW.

**Number WFNJ Families Receiving EA by County  
DECEMBER 2024**

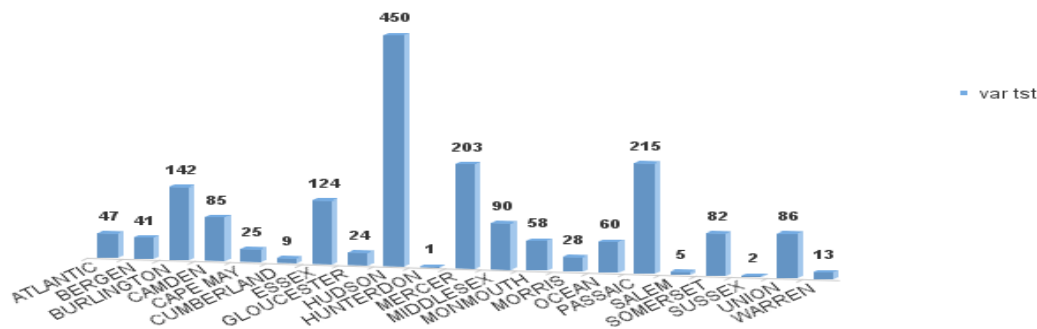
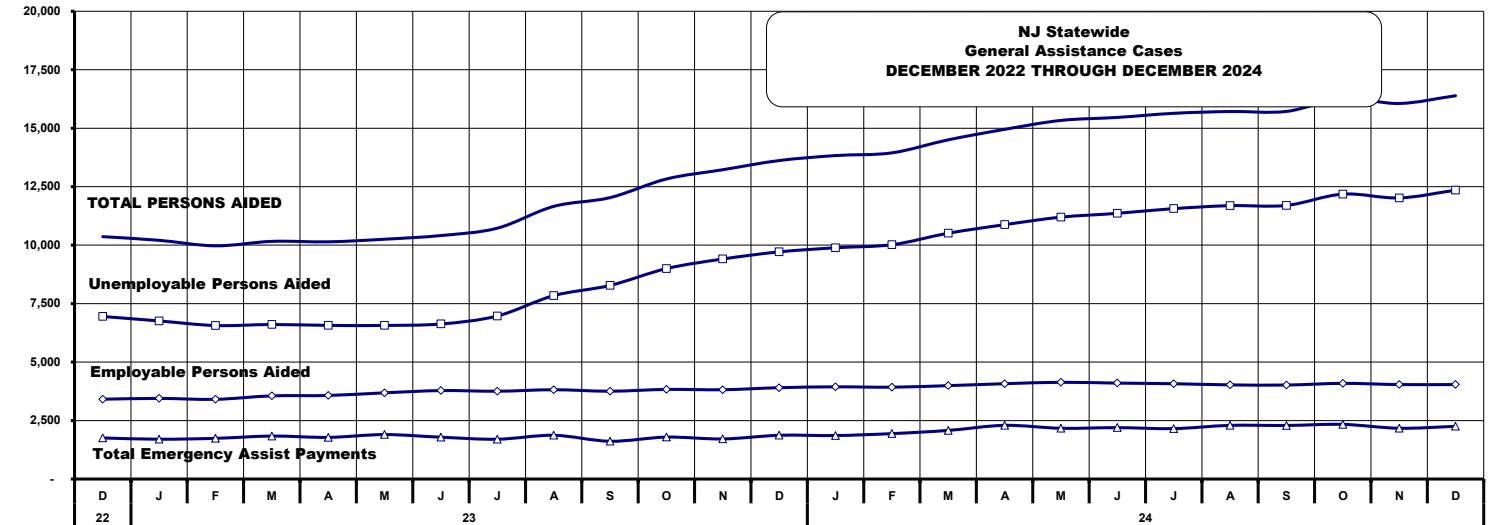


TABLE 10:  
GENERAL  
ASSISTANCE  
PROGRAM

NUMBER OF EMPLOYABLE AND UNEMPLOYABLE RECIPIENTS  
AND EMERGENCY ASSISTANCE PAYMENTS - STATEWIDE  
DECEMBER 2022 THROUGH DECEMBER 2024

	Total Cases						Emergency Assistance Cases			
	Employable	% Chng (1 Yr)	Unemployable	% Chng (1 Yr)	Total	% Chng (1 Yr)	Temporary Rental Assistance	Other GA-EA	Total	% Chng (1 Yr)
2022 DEC	6,950	-30.8%	3,413	-11.5%	10,363	-25.4%	599	1,157	1,756	-3.1%
2022 AVERAGE	10,103		3,619		13,722		688	1,192	1,880	
2023 JAN	6,760	-34.0%	3,447	-9.3%	10,207	-27.3%	590	1,112	1,702	4.8%
FEB	6,563	-38.6%	3,408	-10.6%	9,971	-31.2%	570	1,170	1,740	-6.1%
MAR	6,607	-42.4%	3,555	-8.1%	10,162	-33.7%	586	1,251	1,837	-10.8%
APR	6,569	-44.4%	3,573	-6.5%	10,142	-35.1%	623	1,158	1,781	-8.1%
MAY	6,567	-45.5%	3,686	-3.1%	10,253	-35.3%	634	1,267	1,901	-0.1%
JUN	6,629	-46.1%	3,782	-2.0%	10,411	-35.6%	633	1,155	1,788	-12.0%
JUL	6,971	-44.0%	3,754	-2.8%	10,725	-34.3%	605	1,097	1,702	-12.9%
AUG	7,840	-19.9%	3,817	14.2%	11,657	-11.2%	602	1,268	1,870	-10.4%
SEP	8,277	-1.1%	3,755	16.4%	12,032	3.8%	610	1,005	1,615	-14.8%
OCT	8,997	14.9%	3,831	16.4%	12,828	15.4%	583	1,209	1,792	1.9%
NOV	9,407	28.6%	3,818	14.8%	13,225	24.3%	600	1,114	1,714	4.4%
DEC	9,712	39.7%	3,905	14.4%	13,617	31.4%	598	1,272	1,870	6.5%
2023 AVERAGE	7,575		3,694		11,269		603	1,173	1,776	
2024 JAN	9,888	46.3%	3,942	14.4%	13,830	35.5%	612	1,247	1,859	9.2%
FEB	10,019	52.7%	3,927	15.2%	13,946	39.9%	513	1,428	1,941	11.6%
MAR	10,510	59.1%	3,993	12.3%	14,503	42.7%	629	1,449	2,078	10.0%
APR	10,875	65.6%	4,075	14.0%	14,950	47.4%	659	1,636	2,295	28.9%
MAY	11,197	70.5%	4,136	12.2%	15,333	49.5%	680	1,490	2,170	14.2%
JUN	11,360	71.4%	4,101	8.4%	15,461	48.5%	696	1,501	2,197	22.9%
JUL	11,562	65.9%	4,075	8.6%	15,637	45.8%	662	1,494	2,156	26.7%
AUG	11,689	49.1%	4,025	5.4%	15,714	34.8%	749	1,545	2,294	22.7%
SEP	11,699	41.3%	4,019	7.0%	15,718	30.6%	761	1,529	2,290	41.8%
OCT	12,182	35.4%	4,090	6.8%	16,272	26.8%	766	1,571	2,337	30.4%
NOV	12,019	27.8%	4,039	5.8%	16,058	21.4%	784	1,387	2,171	26.7%
DEC	12,349	27.2%	4,039	3.4%	16,388	20.3%	766	1,486	2,252	20.4%
2024 AVERAGE	11,279		4,038		15,318		690	1,480	2,170	



Source: NJ Division of Family Development, GA Fiscal Unit

**TABLE 11: EMPLOYABLE AND UNEMPLOYABLE CASES  
GENERAL AND EMERGENCY ASSISTANCE CASES RECEIVING PAYMENTS BY COUNTY  
DECEMBER 2024**

PROGRAM	Total Cases						Emergency Assistance Cases			
	Employable	% Chng (1 Yr)	Unemployable	% Chng (1 Yr)	Total	% Chng (1 Yr)	Temporary Rental Assistance	Other GA-EA	Total	% Chng (1 Yr)
ATLANTIC	1,060	8.7%	162	2.5%	1,222	7.9%	47	43	90	-29.1% *
BERGEN	354	9.9%	225	-7.8%	579	2.3%	70	19	89	20.3%
BURLINGTON	476	44.7%	185	-0.5%	661	28.3%	8	153	161	69.5%
CAMDEN	1,754	22.5%	527	14.8%	2,281	20.6%	31	109	140	75.0%
CAPE MAY	229	65.9%	50	0.0%	279	48.4%	12	96	108	100.0%
CUMBERLAND	433	19.6%	198	2.1%	631	13.5%	4	18	22	0.0%
ESSEX	1,376	37.9%	272	8.4%	1,648	31.9%	40	152	192	13.6%
GLOUCESTER	282	33.0%	125	-1.6%	407	20.1%	3	34	37	48.0%
HUDSON	1,757	31.1%	292	-15.1%	2,049	21.7%	187	33	220	-16.0%
HUNTERDON	38	-56.8%	52	15.6%	90	-32.3%	2	10	12	-60.0% *
MERCER	690	59.7%	281	9.3%	971	40.9%	49	74	123	57.7%
MIDDLESEX	498	53.2%	335	-4.0%	833	23.6%	55	81	136	2.3%
MONMOUTH	401	20.8%	249	13.2%	650	17.8%	3	54	57	-43.0% *
MORRIS	262	26.6%	169	-1.2%	431	14.0%	42	37	79	-1.3%
OCEAN	383	-4.5%	213	-4.1%	596	-4.3%	11	109	120	66.7%
PASSAIC	854	53.6%	197	20.1%	1,051	46.0%	92	69	161	257.8% Δ
SALEM	193	77.1%	62	14.8%	255	56.4%	6	1	7	600.0% Δ
SOMERSET	375	31.1%	92	3.4%	467	24.5%	46	186	232	109.0% Δ
SUSSEX	28	-17.6%	26	18.2%	54	-3.6%	0	11	11	83.3%
UNION	813	8.7%	261	11.1%	1,074	9.3%	49	176	225	-18.8%
WARREN	93	8.1%	66	3.1%	159	6.0%	9	21	30	3.4%
NJ TOTAL	12,349	27.2%	4,039	3.4%	16,388	20.3%	766	1,486	2,252	20.4%

Δ = ↑ Caseload %

\* = ↓ Caseload %



**TABLE 12:  
OFFICE OF  
CHILD SUPPORT  
SERVICES**

**OFFICE OF CHILD SUPPORT SERVICES  
QUARTERLY PERFORMANCE REPORT  
STATE SUMMARY  
TITLE IV-D SOURCE COLLECTION REPORT  
Comparison of Quarter-1 (FFY 2024 vs. FFY 2025)**

COLLECTION SOURCE	TOTAL 10/1/2023 - 12/31/2023	% OF TOTAL COLLECTIONS	TOTAL 10/1/2024 - 12/31/2024	% OF TOTAL COLLECTIONS	DOLLAR CHANGE	% CHANGE
FEDERAL TAX	\$1,319,460	0.52%	\$1,464,325	0.57%	\$ 144,865	10.98%
STATE TAX	\$928,831	0.36%	\$690,300	0.27%	\$ (238,531)	-25.68%
UIB	\$6,063,771	2.37%	\$6,152,302	2.39%	\$ 88,531	1.46%
INC WITHHOLD	\$182,967,725	71.52%	\$181,797,360	70.50%	\$ (1,170,365)	-0.64%
FROM OTHER STATES	\$10,369,317	4.05%	\$9,749,754	3.78%	\$ (619,563)	-5.97%
ADMIN ENFORCEMENT	\$3,934,137	1.54%	\$4,942,459	0.02%	\$ 1,008,321	25.63%
OTHER	\$50,237,944	19.64%	\$53,082,608	20.58%	\$ 2,844,664	5.66%
<b>TOTAL COLLECTIONS*</b>	<b>\$255,821,185</b>	<b>100%</b>	<b>\$257,879,108</b>	<b>100%</b>	<b>\$ 2,057,922</b>	<b>0.80%</b>
<b>DISBURSED COLLECTIONS**</b>	<b>\$ 221,862,603</b>		<b>\$ 220,486,546</b>		<b>\$ (1,376,057)</b>	<b>-0.62%</b>

\* Includes collections on both current support and arrears.

\*\* Includes collections on both current support and arrears; also includes money sent to other states.

SOURCE: NJKiDS (Based on Federal Quarterly Report of Collections - OCSE-34A except Disbursed Collections)

Disbursed Collections obtained from Federal Data Report - OCSE-157, which is reported annually to Congress and used in the calculation of incentive dollars earned by each state.

**TABLE 13:**  
**OFFICE OF**  
**CHILD SUPPORT**  
**SERVICES**

**OFFICE OF CHILD SUPPORT SERVICES**  
**STATE SUMMARY**  
**TITLE IV-D PATERNITY ESTABLISHMENT REPORT**

Comparison of December (FFY 2024 vs. FFY 2025)

County	DECEMBER 2023			DECEMBER 2024			Increase or Decrease (-) from FFY 2024 to FFY 2025
	Total Children Born Out of Wedlock*	Number of Paternities Established	Percent of Paternities Established	Total Children Born Out of Wedlock*	Number of Paternities Established	Percent of Paternities Established	
Atlantic	4,622	4,605	99.6%	4,151	4,153	100.0%	0.4%
Bergen	2,342	2,287	97.7%	2,151	2,107	98.0%	0.3%
Burlington	3,476	3,392	97.6%	3,164	3,091	97.7%	0.1%
Camden	11,666	11,424	97.9%	10,790	10,546	97.7%	-0.2%
Cape May	827	832	100.6%	735	737	100.3%	-0.3%
Cumberland	5,100	5,044	98.9%	4,684	4,656	99.4%	0.5%
Essex	17,698	16,899	95.5%	16,172	15,483	95.7%	0.3%
Gloucester	3,080	3,075	99.8%	2,829	2,799	98.9%	-0.9%
Hudson	7,203	6,979	96.9%	6,548	6,398	97.7%	0.8%
Hunterdon	147	153	104.1%	120	120	100.0%	-4.1%
Mercer	4,733	4,594	97.1%	4,327	4,204	97.2%	0.1%
Middlesex	4,579	4,464	97.5%	4,167	4,059	97.4%	-0.1%
Monmouth	3,227	3,162	98.0%	2,919	2,855	97.8%	-0.2%
Morris	811	802	98.9%	714	706	98.9%	0.0%
Ocean	3,559	3,491	98.1%	3,188	3,139	98.5%	0.4%
Passaic	6,977	6,826	97.8%	6,236	6,115	98.1%	0.2%
Salem	2,252	2,169	96.3%	2,187	2,096	95.8%	-0.5%
Somerset	915	905	98.9%	768	757	98.6%	-0.3%
Sussex	376	376	100.0%	349	353	101.1%	1.1%
Union	8,156	7,833	96.0%	7,778	7,470	96.0%	0.0%
Warren	522	526	100.8%	426	425	99.8%	-1.0%
<b>NJ TOTALS</b>	<b>92,268</b>	<b>89,838</b>	<b>97.4%</b>	<b>84,403</b>	<b>82,269</b>	<b>97.47%</b>	<b>0.1%</b>

SOURCE: NJKiDS (Based on Federal Performance Measures - OCSE-157)

\* Information on Out of Wedlock Births obtained from NJ Bureau of Vital Statistics

**TABLE 14:**  
**OFFICE OF**  
**CHILD SUPPORT**  
**SERVICES**

**OFFICE OF CHILD SUPPORT SERVICES**  
**STATE SUMMARY**  
**TITLE IV-D REPORT OF CASES WITH ORDERS**  
Comparison of December (FFY 2024 vs. FFY 2025)

County	DECEMBER 2023			DECEMBER 2024			Increase or Decrease (-) from FFY 2024 to FFY 2025
	Total Cases	Cases with Orders	% of Cases with Orders	Total Cases	Cases with Orders	% of Cases with Orders	
Atlantic	9,339	8,546	91.5%	8,819	8,096	91.8%	0.3%
Bergen	9,623	9,284	96.5%	9,305	9,050	97.3%	0.8%
Burlington	10,774	9,722	90.2%	10,442	9,356	89.6%	-0.6%
Camden	23,318	21,630	92.8%	22,436	20,859	93.0%	0.2%
Cape May	2,300	2,190	95.2%	2,222	2,107	94.8%	-0.4%
Cumberland	9,901	9,311	94.0%	9,374	8,876	94.7%	0.6%
Essex	32,571	28,120	86.3%	31,980	27,061	84.6%	-1.7%
Gloucester	8,189	7,816	95.4%	7,874	7,432	94.4%	-1.1%
Hudson	16,446	14,499	88.2%	15,906	14,116	88.7%	0.6%
Hunterdon	1,052	987	93.8%	991	947	95.6%	1.7%
Mercer	10,646	9,494	89.2%	10,331	9,139	88.5%	-0.7%
Middlesex	14,259	13,030	91.4%	13,771	12,568	91.3%	-0.1%
Monmouth	9,913	9,311	93.9%	9,392	8,760	93.3%	-0.7%
Morris	4,568	4,427	96.9%	4,424	4,279	96.7%	-0.2%
Ocean	11,524	11,024	95.7%	10,972	10,496	95.7%	0.0%
Passaic	15,343	13,541	88.3%	14,432	13,014	90.2%	1.9%
Salem	3,426	3,239	94.5%	3,348	3,129	93.5%	-1.1%
Somerset	3,640	3,266	89.7%	3,399	3,094	91.0%	1.3%
Sussex	2,187	2,151	98.4%	2,113	2,061	97.5%	-0.8%
Union	14,982	14,113	94.2%	14,428	13,664	94.7%	0.5%
Warren	2,078	1,981	95.3%	1,909	1,830	95.9%	0.5%
<b>NJ TOTALS</b>	<b>216,079</b>	<b>197,682</b>	<b>91.5%</b>	<b>207,868</b>	<b>189,934</b>	<b>91.4%</b>	<b>-0.1%</b>

SOURCE: NJKIDS (Based on Federal Performance Measures - OCSE-157)

**TABLE 15:**  
**OFFICE OF**  
**CHILD SUPPORT**  
**SERVICES**

**OFFICE OF CHILD SUPPORT SERVICES**  
**STATE SUMMARY**  
**TITLE IV-D COLLECTIONS ON CURRENT SUPPORT**  
Comparison of December (FFY 2024 vs. FFY 2025)

County	DECEMBER 2023			DECEMBER 2024			Increase or Decrease (-) from FFY 2024 to FFY 2025
	Total Current Support Due	Total Current Support Distributed	Total Collection Rate	Total Current Support Due	Total Current Support Distributed	Total Collection Rate	
Atlantic	\$3,236,785	\$2,095,158	64.7%	\$3,293,886	\$2,082,788	63.2%	-1.5%
Bergen	\$6,911,308	\$5,059,722	73.2%	\$6,960,063	\$5,126,039	73.6%	0.4%
Burlington	\$4,739,450	\$3,259,596	68.8%	\$4,787,233	\$3,270,541	68.3%	-0.5%
Camden	\$6,799,735	\$3,998,838	58.8%	\$6,879,631	\$3,989,451	58.0%	-0.8%
Cape May	\$878,443	\$590,112	67.2%	\$883,030	\$601,060	68.1%	0.9%
Cumberland	\$2,657,284	\$1,537,443	57.9%	\$2,664,100	\$1,536,142	57.7%	-0.2%
Essex	\$9,179,591	\$5,361,780	58.4%	\$9,364,635	\$5,481,875	58.5%	0.1%
Gloucester	\$3,473,076	\$2,253,798	64.9%	\$3,380,508	\$2,241,465	66.3%	1.4%
Hudson	\$6,427,482	\$4,041,378	62.9%	\$6,550,718	\$4,131,858	63.1%	0.2%
Hunterdon	\$892,436	\$750,687	84.1%	\$875,727	\$712,031	81.3%	-2.8%
Mercer	\$3,547,117	\$2,234,391	63.0%	\$3,677,501	\$2,256,786	61.4%	-1.6%
Middlesex	\$6,500,629	\$4,427,956	68.1%	\$6,625,819	\$4,466,305	67.4%	-0.7%
Monmouth	\$5,450,475	\$3,962,002	72.7%	\$5,327,756	\$3,783,690	71.0%	-1.7%
Morris	\$3,572,348	\$2,591,967	72.6%	\$3,547,733	\$2,491,176	70.2%	-2.3%
Ocean	\$5,459,462	\$3,798,587	69.6%	\$5,486,278	\$3,773,702	68.8%	-0.8%
Passaic	\$5,516,147	\$3,423,984	62.1%	\$5,700,319	\$3,524,605	61.8%	-0.2%
Salem	\$981,368	\$587,182	59.8%	\$965,275	\$558,945	57.9%	-1.9%
Somerset	\$2,283,032	\$1,802,457	79.0%	\$2,289,120	\$1,842,919	80.5%	1.6%
Sussex	\$1,427,330	\$1,058,781	74.2%	\$1,405,758	\$1,060,135	75.4%	1.2%
Union	\$6,146,408	\$4,032,722	65.6%	\$6,319,528	\$4,107,705	65.0%	-0.6%
Warren	\$1,041,578	\$789,287	75.8%	\$1,037,478	\$806,287	77.7%	1.9%
<b>NJ TOTALS</b>	<b>\$87,121,482</b>	<b>\$57,657,828</b>	<b>66.2%</b>	<b>\$88,022,095</b>	<b>\$57,845,505</b>	<b>65.7%</b>	<b>-0.5%</b>

SOURCE: NJKiDS (Based on Federal Performance Measures - OCSE-157)

**TABLE 16:**  
**OFFICE OF**  
**CHILD SUPPORT**  
**SERVICES**

**OFFICE OF CHILD SUPPORT SERVICES**  
**STATE SUMMARY**  
**TITLE IV-D CASES ARREARS COLLECTION REPORT**

Comparison of December (FFY 2024 vs. FFY 2025)

County	DECEMBER 2023			DECEMBER 2024			Increase or Decrease (-) from FFY 2024 to FFY 2025
	Total Cases with Arrears	Total Amount Collected	Average Arrears Collection per Case	Total Cases with Arrears	Total Amount Collected	Average Arrears Collection per Case	
Atlantic	5,768	\$477,645	\$82.81	5,552	\$609,144	\$109.72	\$26.91
Bergen	6,235	\$939,159	\$150.63	6,107	\$1,210,757	\$198.26	\$47.63
Burlington	6,511	\$678,388	\$104.19	6,334	\$838,928	\$132.45	\$28.26
Camden	13,274	\$978,765	\$73.74	12,809	\$1,247,843	\$97.42	\$23.68
Cape May	1,521	\$144,183	\$94.79	1,471	\$147,047	\$99.96	\$5.17
Cumberland	5,821	\$445,693	\$76.57	5,648	\$452,296	\$80.08	\$3.51
Essex	17,220	\$1,740,335	\$101.06	16,485	\$1,985,439	\$120.44	\$19.37
Gloucester	5,237	\$649,816	\$124.08	4,935	\$669,303	\$135.62	\$11.54
Hudson	9,982	\$960,300	\$96.20	9,696	\$1,104,265	\$113.89	\$17.69
Hunterdon	615	\$118,745	\$193.08	593	\$121,261	\$204.49	\$11.41
Mercer	6,576	\$727,284	\$110.60	6,296	\$693,823	\$110.20	-\$0.40
Middlesex	8,768	\$1,097,793	\$125.20	8,523	\$1,169,786	\$137.25	\$12.05
Monmouth	6,160	\$900,699	\$146.22	5,832	\$876,427	\$150.28	\$4.06
Morris	3,029	\$490,732	\$162.01	2,917	\$474,211	\$162.57	\$0.56
Ocean	7,046	\$658,595	\$93.47	6,803	\$870,573	\$127.97	\$34.50
Passaic	9,234	\$898,089	\$97.26	8,838	\$1,132,073	\$128.09	\$30.83
Salem	1,945	\$141,474	\$72.74	1,868	\$153,592	\$82.22	\$9.49
Somerset	2,187	\$323,731	\$148.03	2,078	\$380,266	\$183.00	\$34.97
Sussex	1,372	\$211,343	\$154.04	1,321	\$169,820	\$128.55	-\$25.49
Union	9,302	\$1,075,851	\$115.66	8,968	\$1,134,061	\$126.46	\$10.80
Warren	1,341	\$124,346	\$92.73	1,233	\$164,127	\$133.11	\$40.39
<b>NJ TOTALS</b>	<b>129,144</b>	<b>\$13,782,966</b>	<b>\$106.73</b>	<b>124,307</b>	<b>\$15,605,042</b>	<b>\$125.54</b>	<b>\$18.81</b>

SOURCE: OCSE-157 Child Support Enforcement Annual Data Report

**Table 17****WORK FIRST NEW JERSEY STATISTICAL SUMMARY****WFNJ****DECEMBER 2024**

COUNTY	EMPLOYMENT DIRECTED ACTIVITIES			EMPLOYED OPEN (WFNJ RECIPIENT)	SUPPORT SERVICES ON ACTIVE CASE		CLOSED FOR EMPLOYMENT THIS MONTH	POST ASSISTANCE CHILD CARE
	CWEP	ALL OTHER TRAINING	JOB SEARCH		CHILD CARE	TRAINING REL. EXPENSES		
ATLANTIC	27	50	3	15	22	27	4	16
BERGEN	34	3	77	9	51	4	4	9
BURLINGTON	137	10	72	24	31	17	5	10
CAMDEN	29	171	17	62	109	6	16	9
CAPE MAY	6	10	4	1	2	5	0	4
CUMBERLAND	0	46	24	20	25	47	9	3
ESSEX	132	220	4	128	125	234	42	70
GLOUCESTER	7	3	4	25	15	22	7	12
HUDSON	27	268	69	130	241	79	23	21
HUNTERDON	1	0	8	0	4	0	0	1
MERCER	87	204	10	59	127	97	20	43
MIDDLESEX	0	34	66	38	67	0	6	0
MONMOUTH	7	11	12	25	31	7	2	21
MORRIS	1	6	4	8	4	0	2	0
OCEAN	0	203	0	3	18	20	3	7
PASSAIC	125	105	0	30	98	68	5	3
SALEM	0	14	5	6	9	6	1	3
SOMERSET	74	27	16	14	45	13	4	1
SUSSEX	1	0	0	1	0	0	0	1
UNION	125	30	0	49	55	70	5	1
WARREN	0	9	2	4	5	0	0	0
STATE TOTAL	820	1,424	397	651	1,084	722	158	235

Data is derived from NJ Division of Family Development's FAMIS Reports RM064-01 &amp; RM703-51, AdHoc Reports 5549 &amp; 5598 and SDW Report WR00022WZ\_CC

**DIVISION OF FAMILY DEVELOPMENT CURRENT PROGRAM STATISTICS  
DECEMBER 2024**

## **ACRONYMS**

**EMERGENCY ASSISTANCE (EA)** - Payments to those eligible for WFNJ/TANF or WFNJ/GA, authorized during the 30 consecutive days immediately following the emergency (defined as a substantial loss of shelter, food, clothing, or household furnishings by fire, flood or other similar disaster) or if eligible individual or family is in an imminent or actual state of homelessness.

**NJ SNAP** - Formerly the Food Stamp Program, now known as NJ SNAP (NJ Supplemental Nutrition Assistance Program) authorized by Congress as a nutritional supplement program to provide low income households with more food of greater variety and better nutrition. Program eligibility is based on household income, resources, and expenses for medical, shelter, and dependent care. CWA staff refers certain recipients to the New Jersey Department of Labor for participation in the Food Stamp Employment and Training Program.

**FAMIS:** Family Assistance Management Information System

**GAAS:** General Assistance Automated System

**NJKiDS:** New Jersey Kids Deserve Support (Child Support Information Management System)

**NJ MMIS SHARED DATA WAREHOUSE:** The Shared Data Warehouse (SDW) is the repository for New Jersey's DFD and Medicaid data. Since 2003, OptumInsight has administered the SDW and provided access to the data through a reporting tool known as Business Objects.

**OMEGA:** Online Management of Economic Goal Achievement

**SSI-EA:** Supplemental Security Income-Emergency Assistance

**WFNJ:** Work First New Jersey - Fully implemented July 1, 1997, this is New Jersey's welfare reform program which responds to the requirements of the Federal Personal Responsibility and Work Opportunity Reconciliation Act (**PRWORA**) of 1996. PRWORA established Temporary Assistance for Needy Families (**TANF**) as the replacement for AFDC cash assistance. WFNJ includes two segments, **WFNJ/TANF** for families with children, and **WFNJ/GA** (General Assistance) for single adults and couples without dependent children. WFNJ emphasizes achieving self-sufficiency and limits lifetime receipt of financial assistance to a total of five years.

**DIVISION OF FAMILY DEVELOPMENT CURRENT PROGRAM STATISTICS  
DECEMBER 2024**

## **EXPLANATORY NOTES**

The Department of Human Services Division of Family Development provides basic income and an opportunity to achieve self-sufficiency for individuals and families served by the Division's programs. The Division provides leadership, direction and supervision to those public agencies responsible for administering those programs and plans for and develops policies to promote self-sufficiency.

### **WFNJ STATISTICAL SUMMARY (TABLE 17)**

**Employment Directed Activities (EDA)** - From Activities Summary Report (OMEGA report # RM064). Unduplicated count of persons participating in Community Work Experience Program (CWEP), All Other Training, or Job Search.

**Number of Persons Employed This Month, Still Receiving TANF** - Individuals with open "empl" activity on OMEGA. Ad hoc report.

**Participants Receiving Child Care Services** - From Issuance Disbursement Summary (OMEGA report # RM703). Total number of active participants who show receipt of Child Care.

**Number of Persons Closed on FAMIS Due to Employment** - From FAMIS report #5549-RM-2

**Post TANF and Receiving Child Care** - Persons no longer in receipt of TANF but still receiving child care. From Share Data Warehouse Child Care case count based on Child Care payments (SDW report WR00022WZ\_CC ).