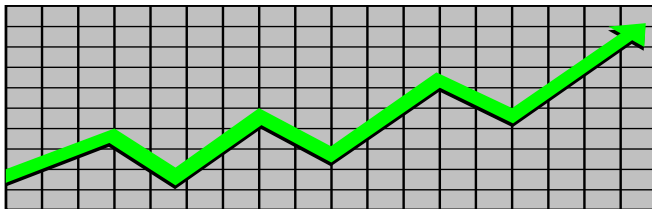


State of New Jersey
Department of Human Services
Division of Family Development

CURRENT PROGRAM STATISTICS



February 2024

Natasha Johnson, Assistant Commissioner

TABLE OF CONTENTS

HIGHLIGHTS:

WFNJ/TANF	ii
NJ SNAP	ii
EMERGENCY ASSISTANCE	ii
GENERAL ASSISTANCE	iii
GA Emergency Assistance.....	iii
GA Program.....	iii
CHILD SUPPORT SERVICES	iii
WORK FIRST NEW JERSEY (WFNJ)	iii
STATISTICS- BY STATE & COUNTY	1
Table 1: WFNJ/TANF Families & Persons (NJ Statewide) February 2022 to 2024.....	1
Table 2: WFNJ/TANF Families (by County)- February 2024.....	2
Table 2B: WFNJ/TANF Persons, Adults, & Children (by County)- February 2024.....	3
Table 3: TANF Work Participation Rates Over 12 Month Period (by County)- February 2024.....	4
Table 4: TANF Work Participation Rates Over 12 Month Period (NJ Statewide)- February 2024.....	5
Table 5: NJ SNAP Households/Persons (NJ Statewide) February 2022 to 2024.....	6
Table 6: NJ SNAP Recipient Trends (NJ Statewide) February 2022 to 2024.....	7
Table 7: NJ SNAP Households/Persons (by County)- February 2024.....	8
Table 8: Emergency Assistance Program (NJ Statewide) February 2022 to 2024.....	9
Table 9: Emergency Assistance Program (by County)- February 2024.....	10
Table 10: General Assistance Program (NJ Statewide) February 2022 to 2024.....	11
Table 11: General Assistance Program (by County)- February 2024.....	12
Table 12: Child Support Services Distributions (NJ Statewide) FFY 2024.....	13
Table 13: Child Support Services Paternities Established- February 2024.....	14
Table 14: Child Support Services Cases With Orders- February 2024.....	15
Table 15: Child Support Services Collections On Current Support- February 2024.....	16
Table 16: Child Support Services Cases With Payments On Arrears- February 2024.....	17
Table 17: WFNJ Statistical Summary- February 2024.....	18
ACRONYMS	19
EXPLANATORY NOTES	20
WFNJ Statistical Summary (Table 17).....	20

DIVISION OF FAMILY DEVELOPMENT CURRENT PROGRAM STATISTICS

FEBRUARY 2024

Each month the Division of Family Development publishes its program statistics for: WFNJ/TANF, NJ SNAP, Emergency Assistance, General Assistance, and Child Support Services. When possible, information is provided separately for children and adults. Many tables also provide trend data with information broken down by county for readers to consider. This report is compiled and prepared by The Bureau of Research & Reporting.

WFNJ/TANF

- As of the end of February, the TANF caseload had increased by 619 cases, from 11,102 in February 2023 to 11,721 in February 2024; an increase of 5.6%.
- The counties with caseloads that increased the most since February 2023 were Essex (22.4%), Somerset (18.9%), and Burlington (17.5%).
- The counties with caseloads that decreased the most since February 2023 were Sussex (-28.6%), Hunterdon (-27.5%), and Passaic (-12.3%).
- Of the WFNJ/TANF cases, 2,451 or 20.9% were child-only in February 2024.
- The counties with the most child-only cases were Camden (408), Hudson (337), and Essex (270).
- Hudson (5,185), Essex (5,031), and Camden (4,148) counties had the greatest number of persons receiving TANF in February 2024.

NJ SNAP (Formerly FOOD STAMPS)

- In February 2024, there were 428,345 households receiving NJ SNAP benefits. The number of NJ SNAP households increased by 29,326 or 7.3%, since February 2023.
- There were 813,496 persons receiving NJ SNAP benefits as of February 2024; an increase of 38,892 or 5% since February 2023.
- The counties having the highest SNAP caseload increase since February 2023 were Union (31.2%), Hudson (14.8%), and Burlington (11.4%).
- The counties having the highest SNAP caseload decrease since February 2023 was Atlantic (-3.2%).

EMERGENCY ASSISTANCE

- There were 1,646 TANF families receiving Emergency Assistance (EA) in February 2024; an increase of 355 or 27.5% since February 2023.
- In February 2024, EA payments were made for 638 SSI recipients.

DIVISION OF FAMILY DEVELOPMENT CURRENT PROGRAM STATISTICS FEBRUARY 2024

- There were 1,941 GA cases with Emergency Assistance payments in February 2024; an increase of 201 or 11.6% since February 2023.
- The counties that showed the highest percent increase in Emergency Assistance payments were Gloucester (900%), Salem (500%), and Sussex (200%).
- The counties that showed the highest percent decrease in Emergency Assistance payments were Ocean (-30.5%), Bergen (-17.6%), and Essex (-16.2%).

GENERAL ASSISTANCE

- The total numbers of cases receiving GA has increased from 9,971 to 13,946 since February 2023; an increase of 39.9%.
- There were 10,019 Employable GA and 3,927 Unemployable GA cases in February 2024.
- The counties that showed a percent increase for GA cases were Passaic (97.4%), Somerset (73.5%), and Hudson (63.2%) since February 2023.
- The counties that showed the highest percent decrease for GA cases since February 2023 was Hunterdon (-23.6%).
- In February 2024, GA cases showed a 0.84% increase since January 2024.

CHILD SUPPORT SERVICES (QUARTERLY REPORT)

- The total collection for the Child Support Services Program was about \$256 million from October 2023 to December 2023; a decrease of -0.5% over the same period from FFY 2023.
- Total distributions decreased -0.7% from December 2022.

WORK FIRST NEW JERSEY (WFNJ)

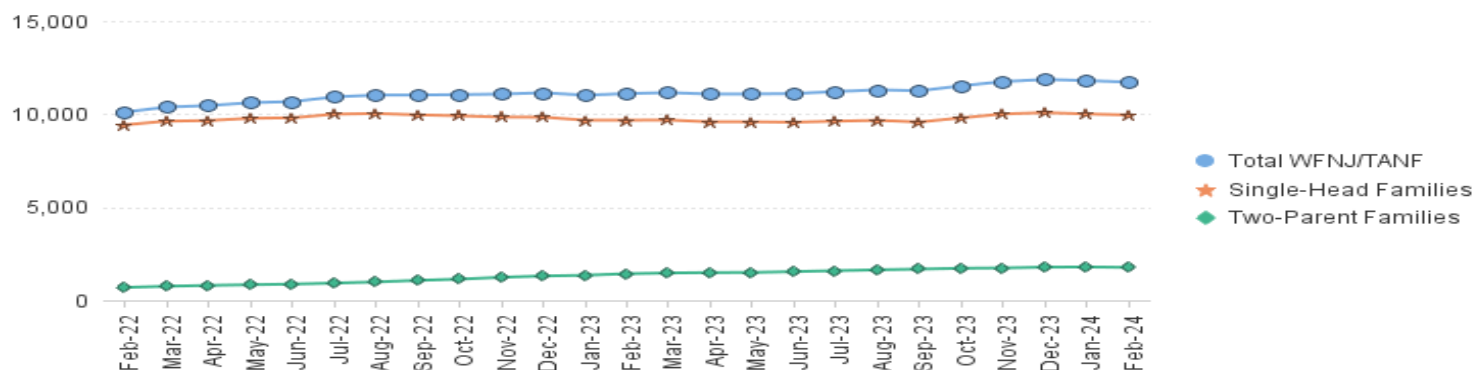
- During the report month of February 2024, there were 556 families in which at least one member was employed and an additional 174 families whose WFNJ assistance cases were closed due to employment - related earnings.
- The three counties with the greatest number of employed active WFNJ recipients were: Essex (142), Hudson (98), and Mercer (54).
- There were 265 former TANF cases receiving post-TANF support in the form of child care assistance.

TABLE 1: WFNJ/TANF PROGRAM

STATEWIDE NUMBER OF APPLICATIONS AND TERMINATIONS DURING FEBRUARY 2024
NUMBER OF ELIGIBLE FAMILIES & PERSONS RECEIVING WFNJ/TANF FOR FEBRUARY 2024

		FEBRUARY 2022 THROUGH FEBRUARY 2024										
		Cases Added	Cases Closed	Child-Only Cases ‡	Total Single-Head Families	2-Parent Families	Total WFNJ/TANF Families	%CHNG (1 Yr.)	Total Persons	%CHNG (1 Yr.)	Adults	Children
2022	FEB	655	414	2,794	9,424	689	10,113	-2.5%	26,638	0.4%	8,008	18,630
	MAR	715	512	2,804	9,623	756	10,379	0.8%	27,433	4.2%	8,331	19,102
	APR	644	622	2,743	9,656	802	10,458	5.5%	27,749	9.8%	8,517	19,232
	MAY	632	475	2,723	9,777	838	10,615	8.7%	28,183	13.4%	8,730	19,453
	JUN	622	599	2,718	9,802	869	10,671	12.4%	28,287	17.1%	8,822	19,465
	JUL	679	518	2,715	9,998	925	10,923	17.2%	29,043	22.1%	9,133	19,910
	AUG	713	609	2,687	10,037	987	11,024	19.9%	29,453	25.6%	9,324	20,129
	SEP	755	808	2,651	9,959	1,070	11,029	22.6%	29,486	28.1%	9,448	20,038
	OCT	753	821	2,626	9,910	1,139	11,049	18.6%	29,606	23.9%	9,562	20,044
	NOV	801	822	2,573	9,843	1,234	11,077	18.4%	29,858	23.0%	9,738	20,120
	DEC	747	792	2,578	9,837	1,308	11,145	15.4%	30,064	19.4%	9,875	20,189
	Average	699	623	2,701	9,755	939	10,693		28,466		8,931	19,535
2023	JAN	669	792	2,560	9,674	1,346	11,020	12.0%	29,683	15.1%	9,806	19,877
	FEB	760	717	2,531	9,676	1,426	11,102	9.8%	30,019	12.7%	9,997	20,022
	MAR	822	864	2,565	9,683	1,470	11,153	7.5%	30,069	9.6%	10,058	20,011
	APR	739	858	2,548	9,587	1,490	11,077	5.9%	29,826	7.5%	10,019	19,807
	MAY	825	813	2,523	9,586	1,498	11,084	4.4%	29,863	6.0%	10,059	19,804
	JUN	827	855	2,500	9,562	1,540	11,102	4.0%	29,926	5.8%	10,142	19,784
	JUL	823	764	2,487	9,624	1,590	11,214	2.7%	30,222	4.1%	10,317	19,905
	AUG	887	841	2,445	9,666	1,638	11,304	2.5%	30,533	3.7%	10,497	20,036
	SEP	912	1,097	2,410	9,577	1,677	11,254	2.0%	30,443	3.2%	10,521	19,922
	OCT	944	891	2,463	9,800	1,722	11,522	4.3%	31,139	5.2%	10,781	20,358
	NOV	859	795	2,495	10,011	1,737	11,748	6.1%	31,776	6.4%	10,990	20,786
	DEC	900	836	2,484	10,080	1,781	11,861	6.4%	32,067	6.7%	11,158	20,909
2023	Average	831	844	2,501	9,711	1,576	11,287		30,464		10,362	20,102
2024	JAN	819	879	2,456	10,010	1,790	11,800	7.1%	31,992	7.8%	11,134	20,858
	FEB	743	865	2,451	9,953	1,768	11,721	5.6%	31,775	5.8%	11,038	20,737
2024	Average To Date	781	872	2,454	9,982	1,779	11,761		31,884		11,086	20,798

NJ STATEWIDE
Eligible Families Receiving WFNJ/TANF
FEBRUARY 2022 THROUGH FEBRUARY 2024



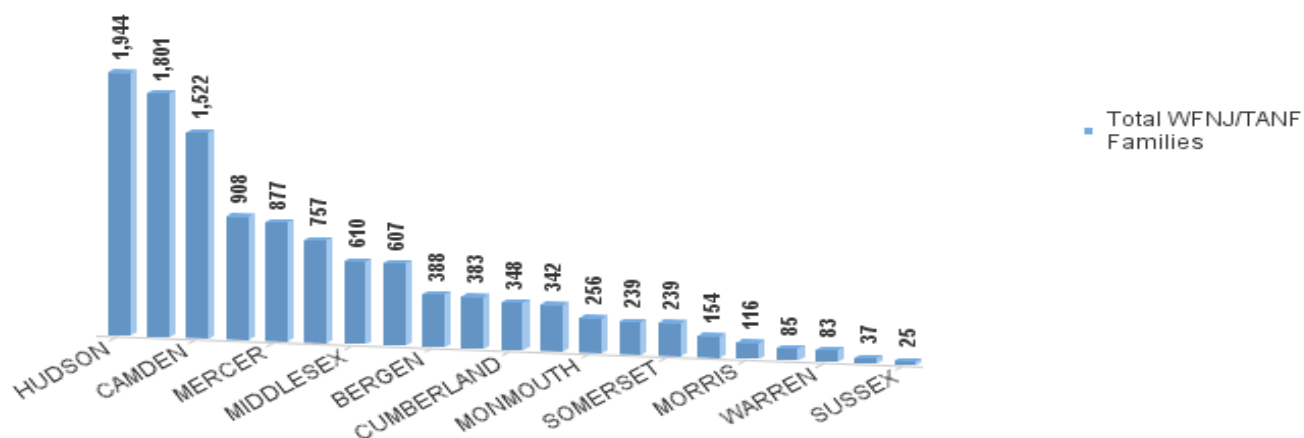
Data is derived from NJ MMIS Shared Data Warehouse Issuance files.
 Effective July 2013 this data query source was converted to the SDW

‡ Child-only cases are defined as families in which no eligible adult receives TANF program benefits, yet the family continues to be headed by at least one of the biological parents, or grandparents, or other appropriate adult.

TABLE 2:
WFNJ/TANF PROGRAM **NUMBER OF APPLICATIONS AND TERMINATIONS BY COUNTY DURING FEBRUARY 2024**
NUMBER OF ELIGIBLE FAMILIES RECEIVING WFNJ/TANF FOR FEBRUARY 2024

County	Cases Added	Cases Closed **	Child-Only Cases ‡	1-Adult Cases	Total Single-Head Families	2-Parent Families	Total WFNJ/TANF Families	%CHNG (3 Mon)	%CHNG (1 Yr.)
ATLANTIC	30	38	171	377	548	59	607	-1.3%	-4.1%
BERGEN	31	31	67	272	339	49	388	-1.3%	-7.6%
BURLINGTON	30	36	95	248	343	40	383	0.3%	17.5% Δ
CAMDEN	68	109	408	954	1,362	160	1,522	-4.8%	1.1%
CAPE MAY	4	7	31	47	78	7	85	2.4%	-2.3%
CUMBERLAND	30	31	106	198	304	44	348	2.1%	7.1%
ESSEX	123	125	270	992	1,262	539	1,801	0.3%	22.4% Δ
GLOUCESTER	9	16	64	162	226	13	239	-5.5%	-9.5%
HUDSON	127	167	337	1,357	1,694	250	1,944	-1.2%	12.6%
HUNTERDON	2	3	4	26	30	7	37	-2.6%	-27.5% *
MERCER	48	81	171	565	736	141	877	-3.3%	10.0%
MIDDLESEX	39	28	176	376	552	58	610	2.2%	9.7%
MONMOUTH	19	24	59	167	226	30	256	-0.8%	6.2%
MORRIS	8	9	16	79	95	21	116	2.7%	10.5%
OCEAN	30	18	59	249	308	34	342	0.6%	-4.5%
PASSAIC	47	45	196	628	824	84	908	-1.2%	-12.3% *
SALEM	14	17	41	94	135	19	154	-0.6%	0.7%
SOMERSET	16	14	41	181	222	17	239	-2.0%	18.9% Δ
SUSSEX	1	3	7	16	23	2	25	4.2%	-28.6% *
UNION	62	57	115	453	568	189	757	1.3%	5.3%
WARREN	5	6	17	61	78	5	83	-7.8%	-11.7%
NJ Total	743	865	2,451	7,502	9,953	1,768	11,721	-1.2%	5.6%

Total WFNJ/TANF Families
FEBRUARY 2024
By County



Data is derived from NJ MMIS Shared Data Warehouse Issuance files.
Effective July 2013 this data query source was converted to the SDW

‡ Child-only cases are defined as families in which no eligible adult receives TANF program benefits, yet the family continues to be headed by at least one of the biological parents, or grandparents, or other appropriate adult

** 'Cases closed' include cases that received a benefit in the prior month, but did not receive any TANF benefit for the report month.

Δ=higher caseload % change

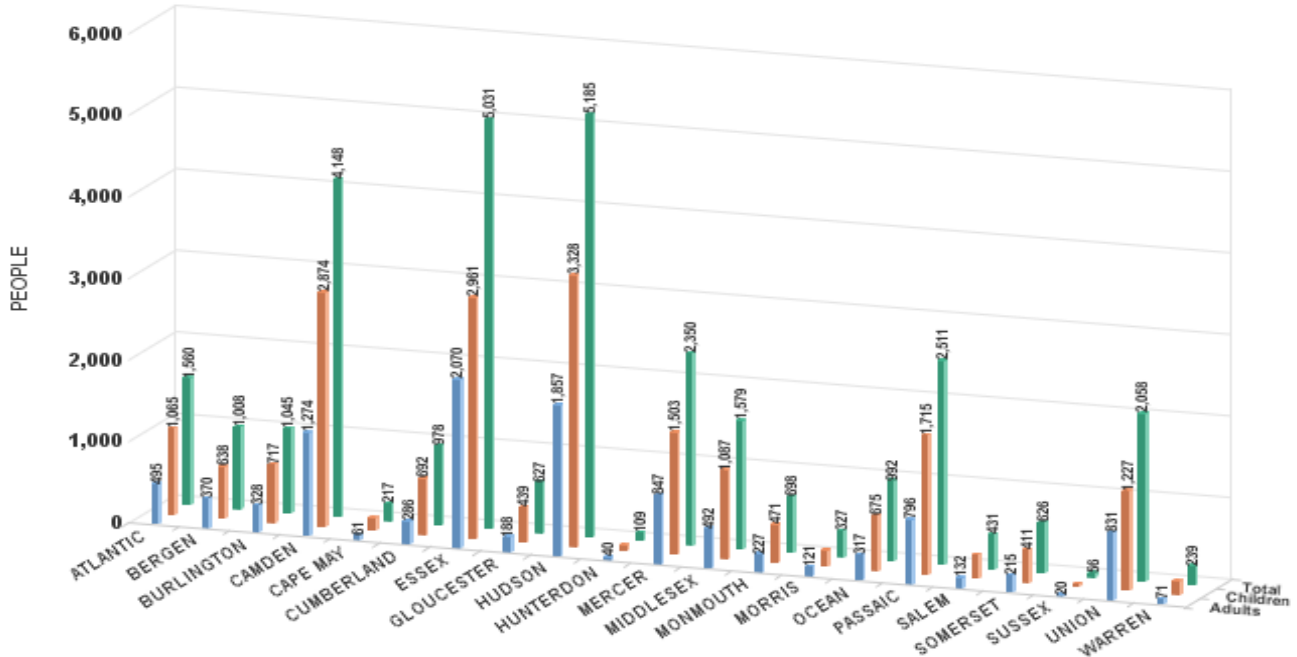
*=lower caseload % change

TABLE 2B :
WFNJ/TANF
PROGRAMNUMBER OF PARTICIPATING PERSONS, ADULTS, AND CHILDREN
BY COUNTY FOR FEBRUARY 2024PERSONS

County	Adults	Children	Child/Adult Ratio	Total Persons	% Chng (1 Yr)	Persons Per Case
ATLANTIC	495	1,065	2.15	1,560	-5.5%	2.57
BERGEN	370	638	1.72	1,008	-10.1%	2.60
BURLINGTON	328	717	2.19	1,045	19.4%	2.73
CAMDEN	1,274	2,874	2.26	4,148	3.6%	2.73
CAPE MAY	61	156	2.56	217	-11.4%	2.55
CUMBERLAND	286	692	2.42	978	4.7%	2.81
ESSEX	2,070	2,961	1.43	5,031	22.8%	2.79
GLOUCESTER	188	439	2.34	627	-13.5%	2.62
HUDSON	1,857	3,328	1.79	5,185	11.8%	2.67
HUNTERDON	40	69	1.73	109	-23.8%	2.95
MERCER	847	1,503	1.77	2,350	13.3%	2.68
MIDDLESEX	492	1,087	2.21	1,579	9.5%	2.59
MONMOUTH	227	471	2.07	698	10.6%	2.73
MORRIS	121	206	1.70	327	16.8%	2.82
OCEAN	317	675	2.13	992	-3.7%	2.90
PASSAIC	796	1,715	2.15	2,511	-11.4%	2.77
SALEM	132	299	2.27	431	2.6%	2.80
SOMERSET	215	411	1.91	626	17.0%	2.62
SUSSEX	20	36	1.80	56	-40.4%	2.24
UNION	831	1,227	1.48	2,058	2.9%	2.72
WARREN	71	168	2.37	239	-3.6%	2.88
NJ Total	11,038	20,737	1.88	31,775	5.8%	2.71

Δ=higher caseload % change

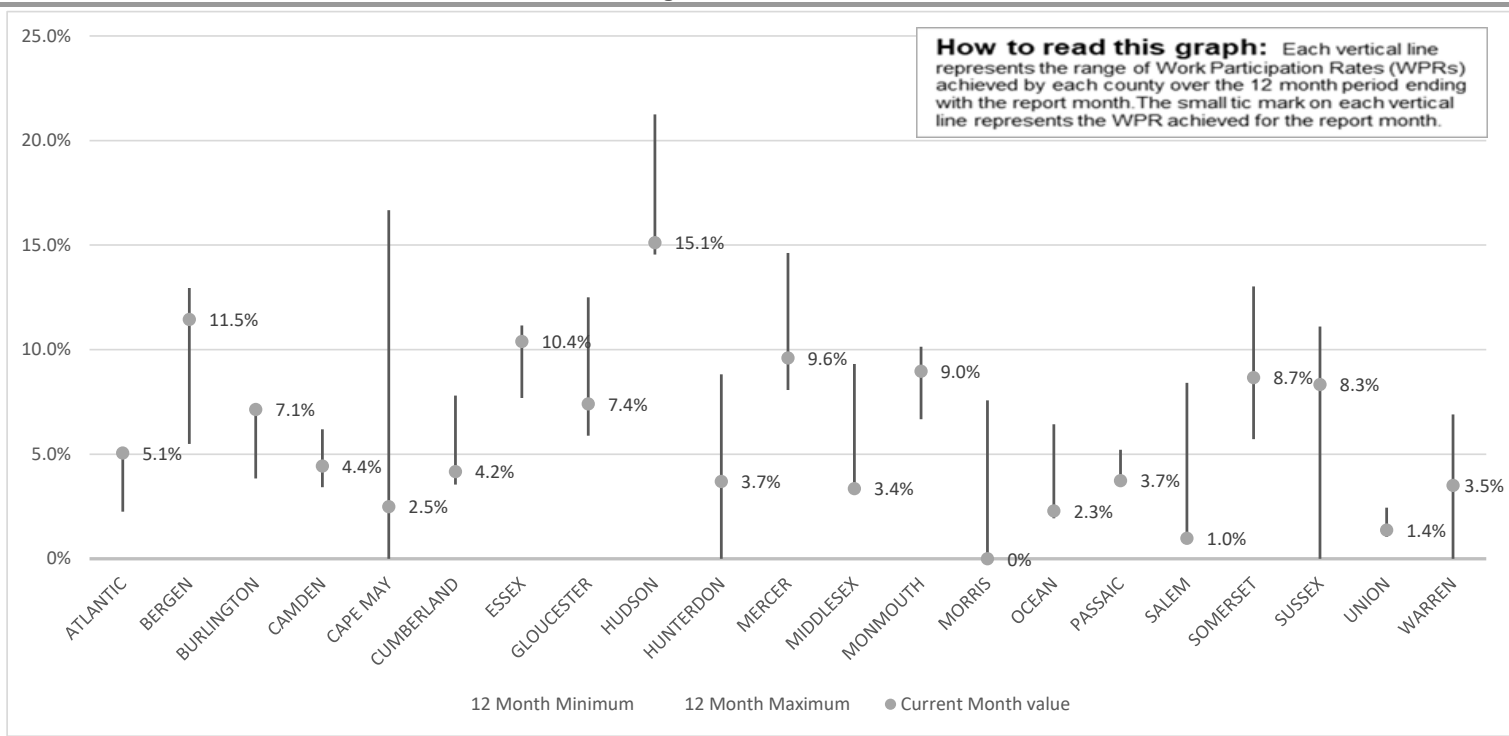
*=lower caseload % change



Data is derived from NJ MMIS Shared Data Warehouse Issuance files.
Effective July 2013 this data query source was converted to the SDW

TABLE 3 :

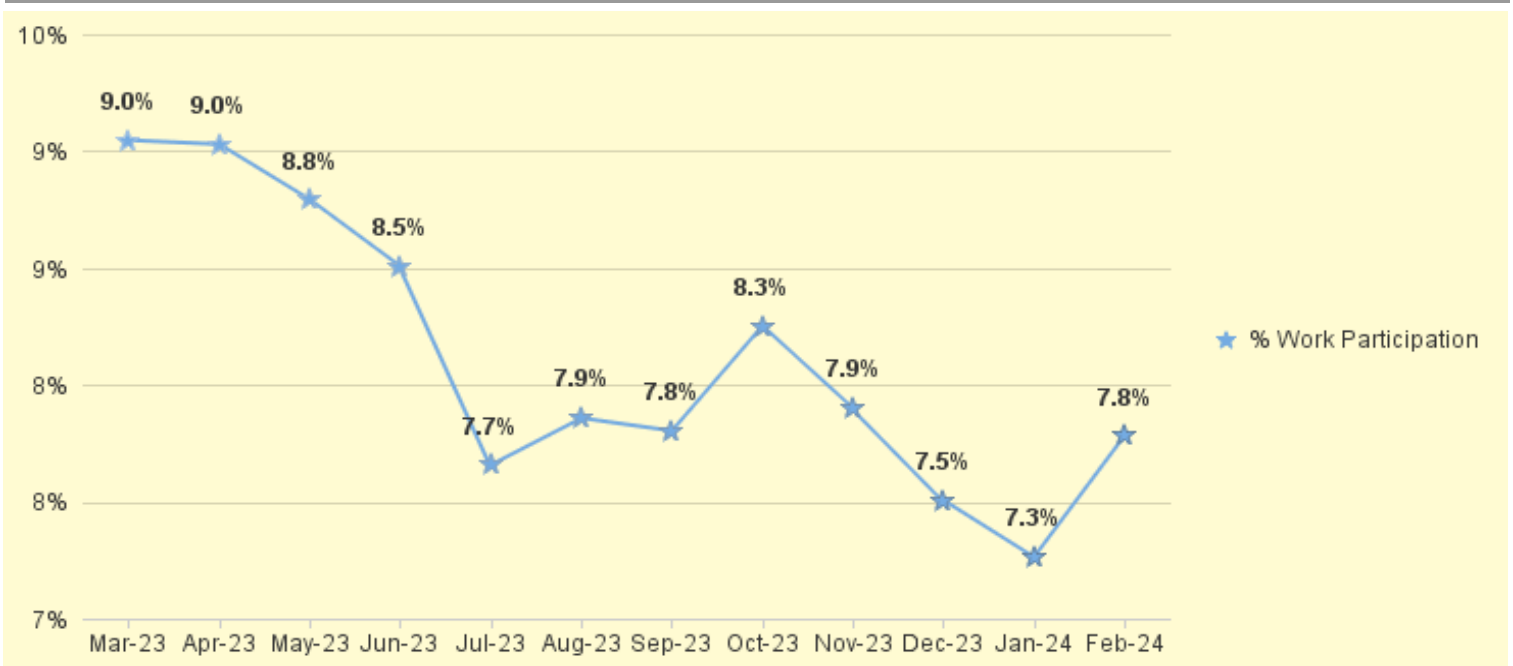
Work Participation Rates Achieved Over 12 Month Period
Ending with FEBRUARY 2024



Data is derived from NJ MMIS Shared Data Warehouse Issuance files.
Effective July 2013 this data query source was converted to the SDW

TABLE 4 :

**WFNJ/TANF Work Participation Rates
for 12-Month Period Ending with FEBRUARY 2024 Statewide**



* The Work Participation rate measures the number of countable Temporary Assistance for Needs Families (TANF) participants based on federal formula. The reported rate is considered to be preliminary until officially calculated by the federal government soon after the close of each federal fiscal year.

TABLE 5 :
NJ SNAP
(FOOD STAMPS)

NUMBER OF PARTICIPATING HOUSEHOLDS, PERSONS, ADULTS
AND CHILDREN FOR FEBRUARY 2024 (STATEWIDE)

FEBRUARY 2022 THROUGH FEBRUARY 2024

		HOUSEHOLDS				PERSONS					People with a disability
		WFNJ/ TANF	Other low income	Total	% CHNG (1 YR)	Adults	Children	TOTAL	% CHNG (1 YR)	Age 60+	
2022	FEB	10,486	451,733	462,219	9.3%	503,693	385,199	888,892	8.1%	156,540	232,864
	MAR	10,588	455,766	466,354	9.0%	508,290	388,977	897,267	7.9%	158,331	234,617
	APR	10,706	439,659	450,365	4.1%	491,276	375,105	866,381	3.1%	156,504	231,071
	MAY	10,669	423,672	434,341	-0.9%	474,542	360,324	834,866	-1.8%	154,816	227,400
	JUN	10,650	412,366	423,016	-6.1%	462,757	351,378	814,135	-7.9%	154,107	225,452
	JUL	10,910	400,990	411,900	-7.8%	451,428	343,730	795,158	-8.1%	152,494	222,166
	AUG	12,919	421,433	434,352	-3.8%	475,405	401,190	876,595	0.3%	151,643	224,286
	SEP	11,543	391,350	402,893	-11.9%	440,973	348,303	789,276	-11.1%	150,801	220,166
	OCT	11,175	384,016	395,191	-14.5%	433,352	329,837	763,189	-14.4%	152,434	220,723
	NOV	10,978	386,385	397,363	-14.6%	436,125	332,459	768,584	-14.4%	153,574	221,980
	DEC	11,094	393,042	404,136	-13.7%	443,837	340,993	784,830	-13.1%	155,061	227,586
	Average	11,011	418,196	429,207		469,290	362,512	831,802		154,511	227,191
2023	JAN	11,120	388,312	399,432	-14.7%	438,140	336,442	774,582	-14.2%	153,633	223,462
	FEB	10,806	388,213	399,019	-13.7%	437,832	336,772	774,604	-12.9%	154,374	223,539
	MAR	12,027	407,914	419,941	-10.0%	460,274	373,470	833,744	-7.1%	156,031	227,136
	APR	11,987	408,628	420,615	-6.6%	460,514	370,535	831,049	-4.1%	156,584	227,434
	MAY	11,026	397,178	408,204	-6.0%	446,453	341,774	788,227	-5.6%	157,317	225,010
	JUN	11,193	399,666	410,859	-2.9%	449,079	343,009	792,088	-2.7%	157,999	225,250
	JUL	11,874	408,109	419,983	2.0%	458,990	363,129	822,119	3.4%	158,680	226,431
	AUG	11,445	398,827	410,272	-5.5%	448,110	340,718	788,828	-10.0%	158,893	224,313
	SEP	11,607	397,739	409,346	1.6%	446,467	338,291	784,758	-0.6%	160,208	225,665
	OCT	11,862	399,663	411,525	4.1%	448,591	338,651	787,242	3.2%	161,651	226,946
	NOV	11,994	404,810	416,804	4.9%	453,939	342,920	796,859	3.7%	162,683	227,481
	DEC	12,360	413,594	425,954	5.4%	464,039	351,241	815,280	3.9%	164,787	233,859
	Average	11,608	401,054	412,663		451,036	348,079	799,115		158,570	226,377
2024	JAN	12,147	413,384	425,531	6.5%	462,636	348,128	810,764	4.7%	164,794	231,669
	FEB	11,859	416,486	428,345	7.3%	465,489	348,007	813,496	5.0%	165,676	231,340
2024 Average To Date		12,003	414,935	426,938		464,063	348,068	812,130		165,235	231,505

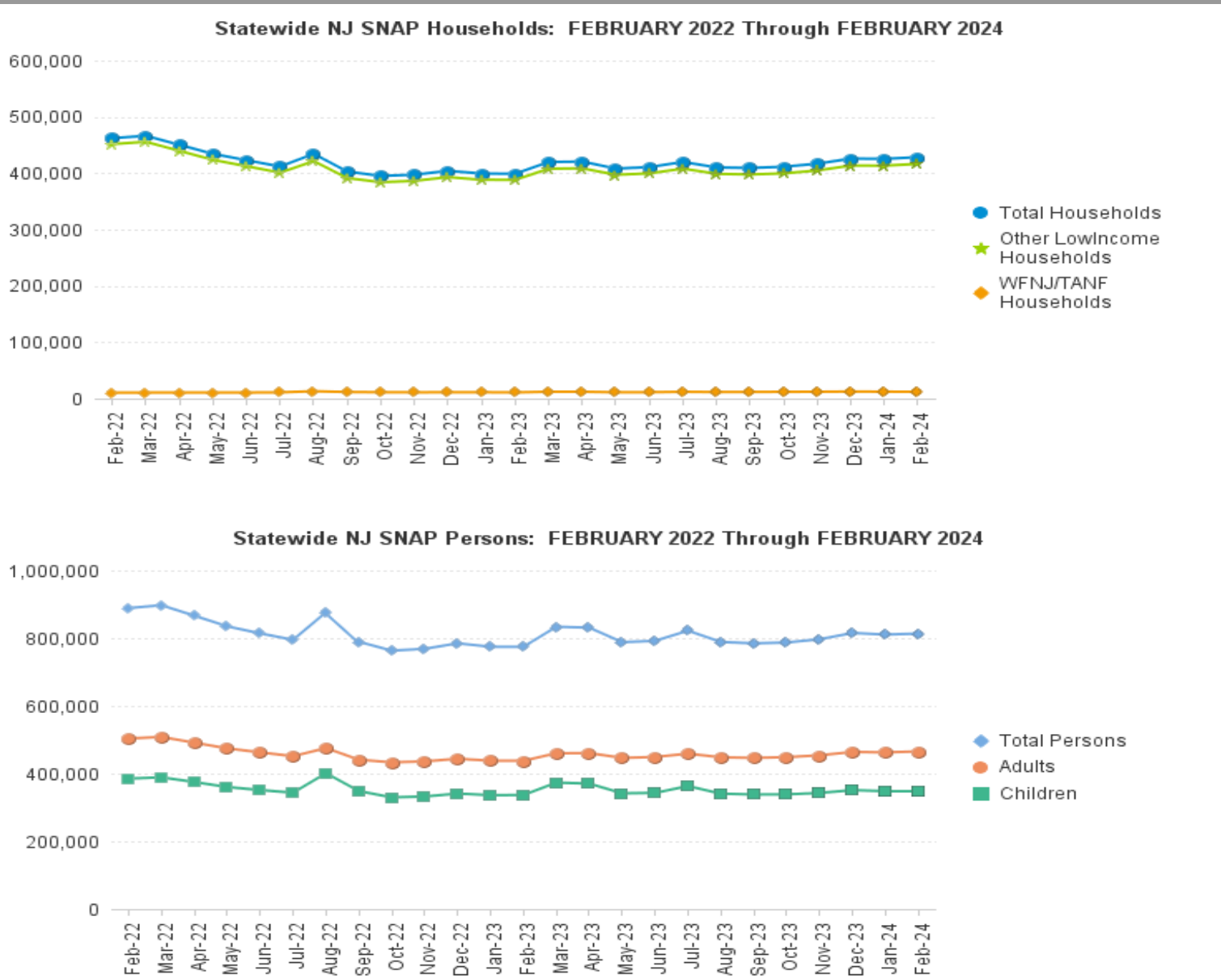
This Table is based on those Households & Persons that recived SNAP issuances (benefits) during the month

Data is derived from NJ MMIS Shared Data Warehouse.

Effective July 2013 this data query source was converted to the SDW.

* Age 60+ and People with a disability columns are independent subsets of total persons. An individual might appear in both columns

TABLE 6: NJ SNAP (FOOD STAMPS)
TRENDS FOR PARTICIPATING HOUSEHOLDS & PERSONS
FEBRUARY 2022 THROUGH FEBRUARY 2024 (STATEWIDE)



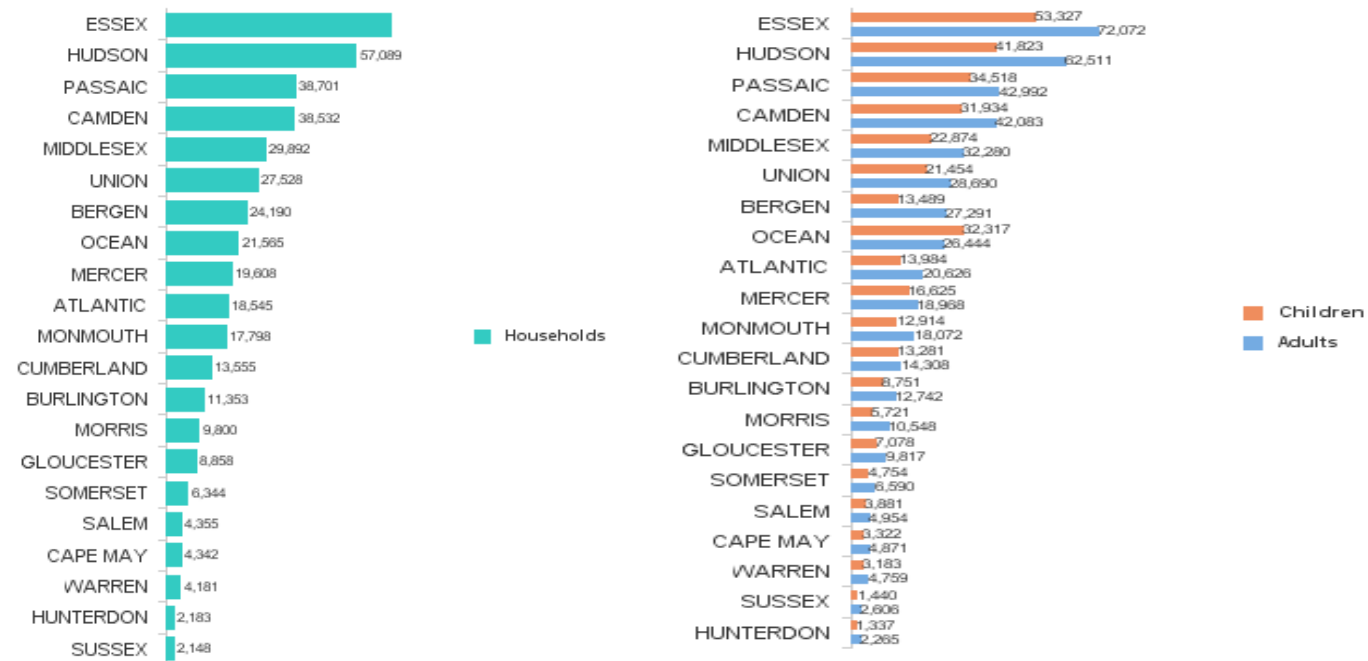
Data is derived from NJ MMIS Shared Data Warehouse Issuance files.
Effective July 2013 this data query source was converted to the SDW

TABLE 7 :
NJ SNAPNUMBER OF PARTICIPATING HOUSEHOLDS, PERSONS, ADULTS
AND CHILDREN BY COUNTY FOR FEBRUARY 2024

County	HOUSEHOLDS				PERSONS				Age 60+	People with a disability
	WFNJ/ TANF	Other low income	TOTAL	% Chng (1 Yr)	Adults	Children	TOTAL	% Chng (1 Yr)		
ATLANTIC	586	17,959	18,545	-3.2% *	20,626	13,984	34,610	-6.2% *	6,974	10,342
BERGEN	364	23,826	24,190	6.0%	27,291	13,489	40,780	5.8%	15,086	17,063
BURLINGTON	472	10,881	11,353	11.4% Δ	12,742	8,751	21,493	8.6%	3,964	6,784
CAMDEN	1,418	37,114	38,532	3.7%	42,083	31,934	74,017	1.6%	11,592	19,751
CAPE MAY	81	4,261	4,342	0.2% *	4,871	3,322	8,193	-1.3% *	1,418	2,332
CUMBERLAND	335	13,220	13,555	3.2%	14,308	13,281	27,589	0.5%	3,781	7,199
ESSEX	2,210	65,568	67,778	4.7%	72,072	53,327	125,399	2.9%	21,459	31,748
GLOUCESTER	235	8,623	8,858	5.4%	9,817	7,078	16,895	4.9%	3,221	6,155
HUDSON	1,878	55,211	57,089	14.8% Δ	62,511	41,823	104,334	12.1% Δ	23,960	29,603
HUNTERDON	42	2,141	2,183	7.3%	2,265	1,337	3,602	5.9%	878	1,249
MERCER	838	18,770	19,608	1.2%	18,968	16,625	35,593	0.2%	5,922	10,516
MIDDLESEX	583	29,309	29,892	7.0%	32,280	22,874	55,154	6.5%	14,795	18,364
MONMOUTH	264	17,534	17,798	8.3%	18,072	12,914	30,986	6.9%	7,391	10,184
MORRIS	158	9,642	9,800	10.8%	10,548	5,721	16,269	10.4% Δ	5,340	5,914
OCEAN	340	21,225	21,565	3.9%	26,444	32,317	58,761	-1.2%	7,488	11,275
PASSAIC	869	37,832	38,701	4.7%	42,992	34,518	77,510	1.6%	16,198	19,758
SALEM	151	4,204	4,355	7.4%	4,954	3,881	8,835	6.2%	1,273	2,426
SOMERSET	233	6,111	6,344	7.7%	6,590	4,754	11,344	5.9%	2,803	3,822
SUSSEX	34	2,114	2,148	1.0% *	2,606	1,440	4,046	-1.5% *	974	1,596
UNION	687	26,841	27,528	31.2% Δ	28,690	21,454	50,144	29.4% Δ	9,663	12,681
WARREN	81	4,100	4,181	4.6%	4,759	3,183	7,942	3.4%	1,496	2,578
NJ TOTAL	11,859	416,486	428,345	7.3%	465,489	348,007	813,496	5.0%	165,676	231,340

Δ=higher caseload % change

*=lower caseload % change

Total NJ SNAP Recipients
FEBRUARY 2024 by County

Data is derived from NJ MMIS Shared Data Warehouse.

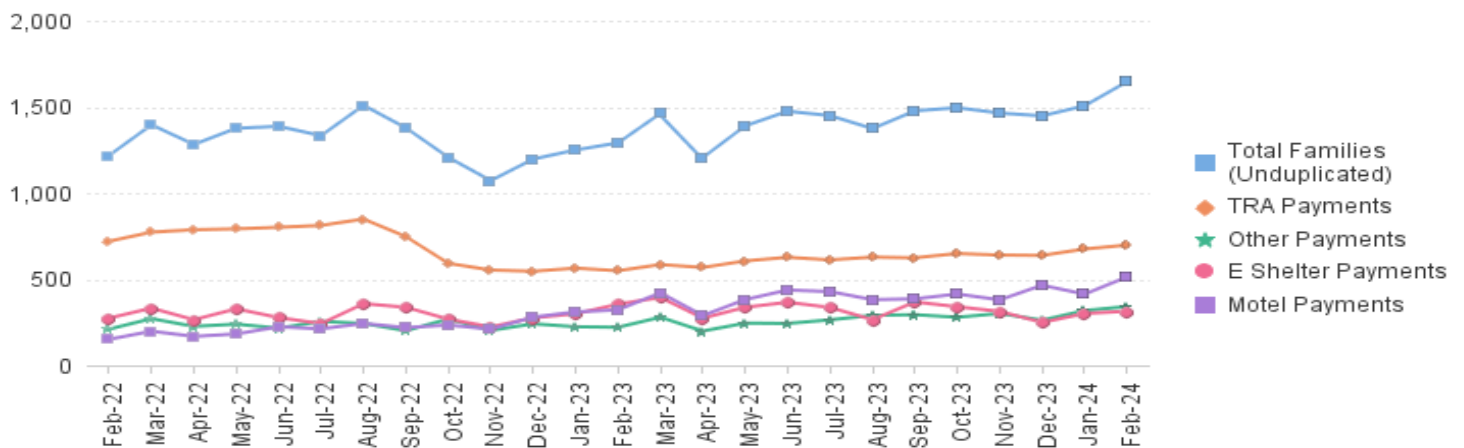
Effective July 2013 this data query source was converted to the SDW.

* Age 60+ and People with a disability columns are independent subsets of total persons. An individual might appear in both columns

TABLE 8 :
EMERGENCY ASSISTANCE TOTAL NUMBER OF ELIGIBLE FAMILIES RECEIVING EMERGENCY ASSISTANCE PAYMENTS
FEBRUARY 2022 THROUGH FEBRUARY 2024 - STATEWIDE
(STATEWIDE)

		Total WFNJ/EA Families (Undupl)	% CHNG (1 YR)	Temp Rent Asst. Payments (Undupl)	% CHNG (1 YR)	Motel Housing Payments (Undupl)	% CHNG (1 YR)	Shelter/Transitional Housing Payments (Undupl)	% CHNG (1 YR)	Other WFNJ/EA Payments (Undupl)	% CHNG (1 YR)
2022	FEB	1,218	-5.9%	720	-19.5%	151	-12.2%	274	57.5%	210	-1.4%
	MAR	1,396	-7.7%	773	-19.5%	198	-14.7%	332	20.7%	271	11.1%
	APR	1,282	-9.4%	787	-16.0%	168	18.3%	265	-6.4%	226	6.6%
	MAY	1,376	1.5%	792	-15.8%	182	7.1%	328	56.9%	239	27.8%
	JUN	1,387	-0.4%	801	-15.1%	224	34.1%	277	13.5%	216	7.5%
	JUL	1,333	0.4%	812	-9.0%	212	30.9%	242	6.1%	255	34.9%
	AUG	1,509	16.2%	849	-6.4%	243	117.0%	358	52.3%	243	41.3%
	SEP	1,378	3.7%	747	-14.7%	219	58.7%	337	17.8%	201	19.6%
	OCT	1,207	-8.1%	592	-29.8%	234	105.3%	268	-0.4%	269	35.2%
	NOV	1,072	-13.8%	553	-34.6%	210	92.7%	223	-1.3%	203	5.2%
	DEC	1,197	-6.3%	546	-33.9%	280	120.5%	276	10.4%	241	50.6%
2022	Average	1,296		723		204		289		230	
2023	JAN	1,250	4.5%	564	-20.1%	310	148.0%	299	4.9%	224	19.8%
	FEB	1,291	6.0%	549	-23.8%	322	113.2%	355	29.6%	221	5.2%
	MAR	1,462	4.7%	585	-24.3%	421	112.6%	394	18.7%	279	3.0%
	APR	1,206	-5.9%	568	-27.8%	289	72.0%	274	3.4%	199	-11.9%
	MAY	1,390	1.0%	606	-23.5%	382	109.9%	337	2.7%	245	2.5%
	JUN	1,475	6.3%	627	-21.7%	437	95.1%	366	32.1%	243	12.5%
	JUL	1,449	8.7%	612	-24.6%	428	101.9%	336	38.8%	264	3.5%
	AUG	1,374	-8.9%	628	-26.0%	381	56.8%	265	-26.0%	290	19.3%
	SEP	1,477	7.2%	624	-16.5%	386	76.3%	368	9.2%	294	46.3%
	OCT	1,495	23.9%	649	9.6%	414	76.9%	340	26.9%	279	3.7%
	NOV	1,464	36.6%	640	15.7%	380	81.0%	313	40.4%	301	48.3%
	DEC	1,448	21.0%	638	16.8%	465	66.1%	249	-9.8%	262	8.7%
2023	Average	1,398		608		385		325		258	
2024	JAN	1,506	20.5%	675	19.7%	413	33.2%	301	0.7%	318	42.0%
	FEB	1,646	27.5%	698	27.1%	513	59.3%	314	-11.5%	341	54.3%
2024	Average To Date	1,576		687		463		308		330	

NJ STATEWIDE
Families Receiving Emergency Assistance
FEBRUARY 2022 THROUGH FEBRUARY 2024



WFNJ/EA data is derived from NJ MMIS Shared Data Warehouse.

Effective July 2013 this data query source was converted to the SDW.

* Effective Feb '11 Transitional Housing Payments were removed from 'Other EA Payments' and added to 'Shelter Payments'.

TABLE 9 :
EMERGENCY ASSISTANCE
ASSISTANCE
(BY COUNTY)

TOTAL NUMBER OF ELIGIBLE FAMILIES RECEIVING EMERGENCY ASSISTANCE PAYMENTS
BY COUNTY (UNDUPLICATED CASES) FOR FEBRUARY 2024

County	TOTAL WFNJ/EA Families (Undupl)	% CHNG From FEB 23	Temp Rent Asst. Payments (Undupl)	Motel Housing Payments (Undupl)	Shelter/Transitional Housing Payments (Undupl)	Other WFNJ/EA Payments (Undupl)	SSI Recipients Receiving EA **
ATLANTIC	53	120.8%	34	9	1	14	40
BERGEN	39	21.9%	21	1	12	9	28
BURLINGTON	155	39.6%	26	119	21	13	104
CAMDEN	60	30.4%	10	22	23	7	18
CAPE MAY	27	35.0%	10	18	0	1	20
CUMBERLAND	10	400.0% Δ	1	2	5	3	3
ESSEX	120	2.6%	45	0	72	16	6
GLOUCESTER	31	47.6%	1	2	18	14	19
HUDSON	381	73.2%	207	122	60	66	95
HUNTERDON	5	25.0%	0	1	0	4	1
MERCER	157	11.3%	101	17	2	55	52
MIDDLESEX	84	-8.7% *	34	34	4	25	58
MONMOUTH	47	62.1%	2	19	29	4	37
MORRIS	23	9.5%	7	13	3	1	18
OCEAN	51	-13.6% *	15	30	0	7	20
PASSAIC	166	19.4%	96	17	28	44	44
SALEM	6	500.0% Δ	3	0	1	3	0
SOMERSET	89	45.9%	46	26	1	32	44
SUSSEX	7	250.0%	0	4	3	0	0
UNION	117	-19.3% *	33	52	28	16	19
WARREN	18	350.0% Δ	6	5	3	7	12
NJ Total	1,646	27.5%	698	513	314	341	638

Δ=higher caseload % change

*=lower caseload % change

** SSI-EA includes pay codes 22 and 24, data is derived from NJ Division of Family Development FAMIS Report #FM430-03A

WFNJ/EA data is derived from NJ MMIS Shared Data Warehouse.

Effective July 2013 this data query source was converted to the SDW.

Number WFNJ Families Receiving EA by County
FEBRUARY 2024

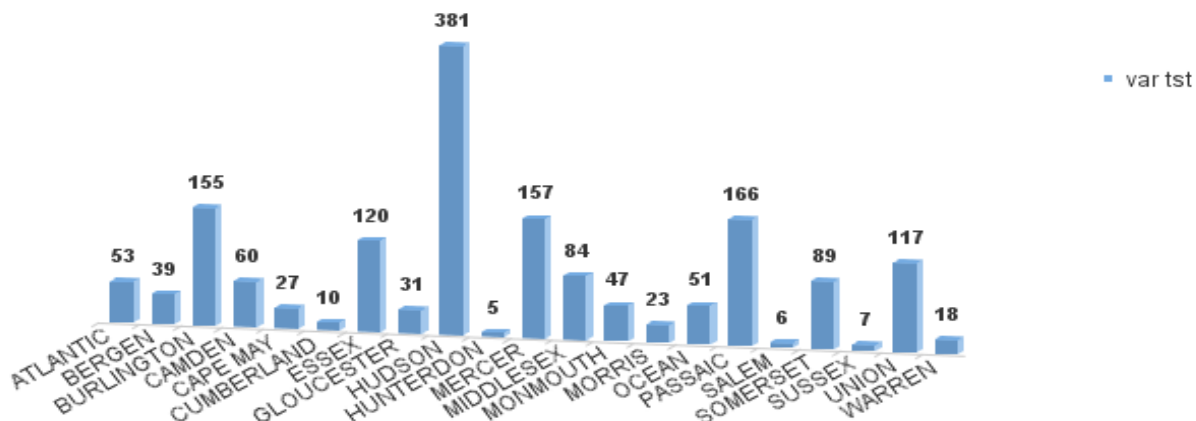


TABLE 10:
GENERAL
ASSISTANCE
PROGRAM

NUMBER OF EMPLOYABLE AND UNEMPLOYABLE RECIPIENTS
AND EMERGENCY ASSISTANCE PAYMENTS - STATEWIDE
FEBRUARY 2022 THROUGH FEBRUARY 2024

PROGRAM	Total Cases						Emergency Assistance Cases			
	Employable	% Chng (1 Yr)	Unemployable	% Chng (1 Yr)	Total	% Chng (1 Yr)	Temporary Rental Assistance	Other GA-EA	Total	% Chng (1 Yr)
2022 FEB	10,687	17.6%	3,812	-13.5%	14,499	7.4%	727	1,126	1,853	2.9%
MAR	11,462	19.0%	3,870	-12.5%	15,332	9.1%	719	1,399	2,118	-4.8%
APR	11,810	24.3%	3,823	-10.8%	15,633	13.4%	742	1,196	1,938	-4.8%
MAY	12,039	25.0%	3,805	-13.9%	15,844	12.8%	750	1,152	1,902	45.2%
JUN	12,306	36.6%	3,858	-6.6%	16,164	22.0%	782	1,250	2,032	6.8%
JUL	12,451	37.0%	3,862	-5.3%	16,313	23.9%	758	1,196	1,954	0.0%
AUG	9,785	7.3%	3,342	-16.1%	13,127	0.2%	691	1,396	2,087	13.2%
SEP	8,370	-7.5%	3,225	-17.6%	11,595	-10.5%	635	1,261	1,896	-0.3%
OCT	7,829	-15.9%	3,291	-15.1%	11,120	-15.7%	574	1,184	1,758	-3.3%
NOV	7,313	-24.4%	3,326	-13.7%	10,639	-21.3%	602	1,040	1,642	-4.6%
DEC	6,950	-30.8%	3,413	-11.5%	10,363	-25.4%	599	1,157	1,756	-3.1%
2022 AVERAGE	10,103		3,619		13,722		688	1,192	1,880	
2023 JAN	6,760	-34.0%	3,447	-9.3%	10,207	-27.3%	590	1,112	1,702	4.8%
FEB	6,563	-38.6%	3,408	-10.6%	9,971	-31.2%	570	1,170	1,740	-6.1%
MAR	6,607	-42.4%	3,555	-8.1%	10,162	-33.7%	586	1,251	1,837	-10.8%
APR	6,569	-44.4%	3,573	-6.5%	10,142	-35.1%	623	1,158	1,781	-8.1%
MAY	6,567	-45.5%	3,686	-3.1%	10,253	-35.3%	634	1,267	1,901	-0.1%
JUN	6,629	-46.1%	3,782	-2.0%	10,411	-35.6%	633	1,155	1,788	-12.0%
JUL	6,971	-44.0%	3,754	-2.8%	10,725	-34.3%	605	1,097	1,702	-12.9%
AUG	7,840	-19.9%	3,817	14.2%	11,657	-11.2%	602	1,268	1,870	-10.4%
SEP	8,277	-1.1%	3,755	16.4%	12,032	3.8%	610	1,005	1,615	-14.8%
OCT	8,997	14.9%	3,831	16.4%	12,828	15.4%	583	1,209	1,792	1.9%
NOV	9,407	28.6%	3,818	14.8%	13,225	24.3%	600	1,114	1,714	4.4%
DEC	9,712	39.7%	3,905	14.4%	13,617	31.4%	598	1,272	1,870	6.5%
2023 AVERAGE	7,575		3,694		11,269		603	1,173	1,776	
2024 JAN	9,888	46.3%	3,942	14.4%	13,830	35.5%	612	1,247	1,859	9.2%
FEB	10,019	52.7%	3,927	15.2%	13,946	39.9%	513	1,428	1,941	11.6%
2024 AVERAGE TO DATE	9,954		3,935		13,888		563	1,338	1,900	

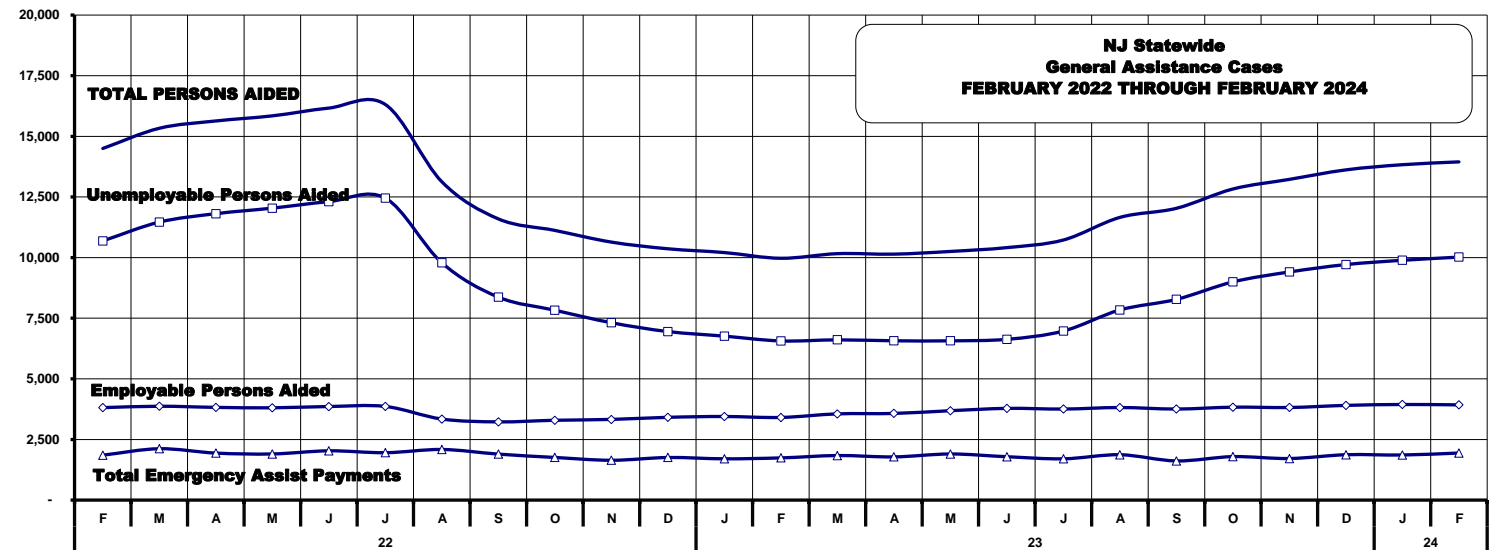


TABLE 11:
GENERAL
ASSISTANCE
PROGRAM

EMPLOYABLE AND UNEMPLOYABLE CASES
AND EMERGENCY ASSISTANCE CASES RECEIVING PAYMENTS BY COUNTY
FEBRUARY 2024

	Total Cases						Emergency Assistance Cases			
	Employable	% Chng (1 Yr)	Unemployable	% Chng (1 Yr)	Total	% Chng (1 Yr)	Temporary Rental Assistance	Other GA-EA	Total	% Chng (1 Yr)
ATLANTIC	992	33.3%	157	11.3%	1,149	29.8%	79	30	109	-7.6%
BERGEN	322	33.6%	251	-3.5%	573	14.4%	49	26	75	-17.6% *
BURLINGTON	335	24.5%	185	38.1%	520	29.0%	7	93	100	-5.7%
CAMDEN	1,472	38.0%	483	22.9%	1,955	33.9%	36	75	111	24.7%
CAPE MAY	162	48.6%	52	40.5%	214	46.6%	18	70	88	95.6%
CUMBERLAND	398	79.3%	185	27.6%	583	58.9%	2	27	29	70.6%
ESSEX	981	68.3%	240	21.8%	1,221	56.5%	20	130	150	-16.2% *
GLOUCESTER	163	7.9%	114	-1.7%	277	3.7%	4	26	30	900.0% Δ
HUDSON	1,343	72.2%	364	36.8%	1,707	63.2%	19	155	174	26.1%
HUNTERDON	66	-23.3%	47	-24.2%	113	-23.6%	7	21	28	0.0%
MERCER	508	51.6%	246	10.3%	754	35.1%	36	75	111	101.8%
MIDDLESEX	345	46.2%	344	12.1%	689	26.9%	49	101	150	-7.4%
MONMOUTH	336	114.0%	228	14.0%	564	58.0%	3	73	76	-7.3%
MORRIS	210	32.9%	162	8.7%	372	21.2%	36	36	72	-5.3%
OCEAN	428	73.3%	228	6.0%	656	42.0%	13	53	66	-30.5% *
PASSAIC	601	153.6%	169	10.5%	770	97.4%	35	49	84	121.1%
SALEM	130	100.0%	52	0.0%	182	55.6%	3	9	12	500.0% Δ
SOMERSET	311	81.9%	95	50.8%	406	73.5%	39	106	145	104.2%
SUSSEX	37	5.7%	24	-7.7%	61	0.0%	0	6	6	200.0% Δ
UNION	787	31.2%	242	23.5%	1,029	29.3%	50	242	292	-7.0%
WARREN	92	31.4%	59	-19.2%	151	5.6%	8	25	33	13.8%
NJ TOTAL	10,019	52.7%	3,927	15.2%	13,946	39.9%	513	1,428	1,941	11.6%

Δ= ↑ Caseload %

* = ↓ Caseload %

TABLE 12:
OFFICE OF
CHILD SUPPORT
SERVICES

OFFICE OF CHILD SUPPORT SERVICES
QUARTERLY PERFORMANCE REPORT
STATE SUMMARY
TITLE IV-D SOURCE COLLECTION REPORT

Comparison of Quarter-1 (FFY 2023 vs. FFY 2024)

COLLECTION SOURCE	TOTAL 10/1/2022 - 12/31/2022	% OF TOTAL COLLECTIONS	TOTAL 10/1/2023 - 12/31/2023	% OF TOTAL COLLECTIONS	DOLLAR CHANGE	% CHANGE
FEDERAL TAX	\$2,961,234	1.15%	\$1,319,460	0.52%	\$ (1,641,774)	-55.44%
STATE TAX	\$426,243	0.17%	\$928,831	0.36%	\$ 502,588	117.91%
UIB	\$4,946,061	1.92%	\$6,063,771	2.37%	\$ 1,117,710	22.60%
INC WITHHOLD	\$183,380,696	71.32%	\$182,967,725	71.52%	\$ (412,971)	-0.23%
FROM OTHER STATES	\$10,082,545	3.92%	\$10,369,317	4.05%	\$ 286,772	2.84%
ADMIN ENFORCEMENT	\$4,104,769	1.60%	\$3,934,137	0.02%	\$ (170,632)	-4.16%
OTHER	\$51,204,946	19.92%	\$50,237,944	19.64%	\$ (967,002)	-1.89%
TOTAL COLLECTIONS*	\$257,106,494	100%	\$255,821,185	100%	\$ (1,285,309)	-0.50%
DISBURSED COLLECTIONS**	\$223,277,704		\$221,862,603		\$ (1,415,101)	-0.63%

* Includes collections on both current support and arrears.

** Includes collections on both current support and arrears; also includes money sent to other states.

SOURCE: NJKiDS (Based on Federal Quarterly Report of Collections - OCSE-34A except Disbursed Collections)

Disbursed Collections obtained from Federal Data Report - OCSE-157, which is reported annually to Congress and used in the calculation of incentive dollars earned by each state.

TABLE 13:
OFFICE OF
CHILD SUPPORT
SERVICES

OFFICE OF CHILD SUPPORT SERVICES
STATE SUMMARY
TITLE IV-D PATERNITY ESTABLISHMENT REPORT
Comparison of February (FFY 2023 vs. FFY 2024)

County	FEBRUARY 2023			FEBRUARY 2024			Increase or Decrease (-) from FFY 2023 to FFY 2024
	Total Children Born Out of Wedlock*	Number of Paternities Established	Percent of Paternities Established	Total Children Born Out of Wedlock*	Number of Paternities Established	Percent of Paternities Established	
Atlantic	4,935	4,920	99.7%	4,535	4,527	99.8%	0.1%
Bergen	2,512	2,464	98.1%	2,323	2,278	98.1%	0.0%
Burlington	3,749	3,680	98.2%	3,446	3,364	97.6%	-0.5%
Camden	12,557	12,275	97.8%	11,483	11,221	97.7%	0.0%
Cape May	899	891	99.1%	814	816	100.2%	1.1%
Cumberland	5,443	5,391	99.0%	5,032	4,979	98.9%	-0.1%
Essex	19,040	18,148	95.3%	17,526	16,713	95.4%	0.0%
Gloucester	3,319	3,303	99.5%	3,046	3,032	99.5%	0.0%
Hudson	7,725	7,467	96.7%	7,093	6,894	97.2%	0.5%
Hunterdon	165	168	101.8%	145	144	99.3%	-2.5%
Mercer	5,235	5,062	96.7%	4,651	4,531	97.4%	0.7%
Middlesex	5,012	4,898	97.7%	4,534	4,401	97.1%	-0.7%
Monmouth	3,646	3,560	97.6%	3,182	3,104	97.5%	-0.1%
Morris	909	905	99.6%	792	783	98.9%	-0.7%
Ocean	3,807	3,741	98.3%	3,486	3,432	98.5%	0.2%
Passaic	7,663	7,481	97.6%	6,846	6,708	98.0%	0.4%
Salem	2,325	2,243	96.5%	2,229	2,147	96.3%	-0.2%
Somerset	1,028	1,001	97.4%	898	888	98.9%	1.5%
Sussex	393	397	101.0%	371	375	101.1%	0.1%
Union	8,603	8,184	95.1%	8,089	7,759	95.9%	0.8%
Warren	580	587	101.2%	507	508	100.2%	-1.0%
NJ TOTALS	99,545	96,766	97.2%	91,028	88,604	97.3%	0.1%

SOURCE: NJKiDS (Based on Federal Performance Measures - OCSE-157)

* Information on Out of Wedlock Births obtained from NJ Bureau of Vital Statistics

TABLE 14:
OFFICE OF
CHILD SUPPORT
SERVICES

OFFICE OF CHILD SUPPORT SERVICES
STATE SUMMARY
TITLE IV-D REPORT OF CASES WITH ORDERS
Comparison of February (FFY 2023 vs. FFY 2024)

County	FEBRUARY 2023			FEBRUARY 2024			Increase or Decrease (-) from FFY 2023 to FFY 2024
	Total Cases	Cases with Orders	% of Cases with Orders	Total Cases	Cases with Orders	% of Cases with Orders	
Atlantic	9,660	8,938	92.5%	9,305	8,472	91.0%	-1.5%
Bergen	9,978	9,690	97.1%	9,570	9,256	96.7%	-0.4%
Burlington	10,964	10,092	92.0%	10,777	9,690	89.9%	-2.1%
Camden	24,083	22,576	93.7%	22,987	21,449	93.3%	-0.4%
Cape May	2,439	2,308	94.6%	2,295	2,188	95.3%	0.7%
Cumberland	10,246	9,668	94.4%	9,836	9,246	94.0%	-0.4%
Essex	33,542	29,090	86.7%	32,520	28,006	86.1%	-0.6%
Gloucester	8,601	8,212	95.5%	8,182	7,780	95.1%	-0.4%
Hudson	16,835	15,049	89.4%	16,410	14,418	87.9%	-1.5%
Hunterdon	1,121	1,053	93.9%	1,040	976	93.8%	-0.1%
Mercer	11,140	9,911	89.0%	10,564	9,418	89.2%	0.2%
Middlesex	14,738	13,605	92.3%	14,227	12,996	91.3%	-1.0%
Monmouth	10,597	9,969	94.1%	9,864	9,268	94.0%	-0.1%
Morris	4,718	4,580	97.1%	4,529	4,400	97.2%	0.1%
Ocean	12,021	11,515	95.8%	11,445	10,912	95.3%	-0.4%
Passaic	15,840	13,920	87.9%	15,091	13,455	89.2%	1.3%
Salem	3,533	3,333	94.3%	3,409	3,201	93.9%	-0.4%
Somerset	3,779	3,437	90.9%	3,636	3,238	89.1%	-1.9%
Sussex	2,193	2,135	97.4%	2,147	2,112	98.4%	1.0%
Union	15,566	14,671	94.3%	14,830	14,021	94.5%	0.3%
Warren	2,171	2,053	94.6%	2,030	1,954	96.3%	1.7%
NJ TOTALS	223,765	205,805	92.0%	214,694	196,456	91.5%	-0.5%

SOURCE: NJKiDS (Based on Federal Performance Measures - OCSE-157)

TABLE 15:
OFFICE OF
CHILD SUPPORT
SERVICES

OFFICE OF CHILD SUPPORT SERVICES
STATE SUMMARY
TITLE IV-D COLLECTIONS ON CURRENT SUPPORT
Comparison of February (FFY 2023 vs. FFY 2024)

County	FEBRUARY 2023			FEBRUARY 2024			Increase or Decrease (-) from FFY 2023 to FFY 2024
	Total Current Support Due	Total Current Support Distributed	Total Collection Rate	Total Current Support Due	Total Current Support Distributed	Total Collection Rate	
Atlantic	\$3,071,572	\$1,955,216	63.7%	\$3,190,548	\$2,052,855	64.3%	0.7%
Bergen	\$6,729,689	\$5,075,659	75.4%	\$6,800,630	\$5,024,272	73.9%	-1.5%
Burlington	\$4,528,417	\$3,128,826	69.1%	\$4,663,945	\$3,166,763	67.9%	-1.2%
Camden	\$6,413,428	\$3,826,909	59.7%	\$6,743,245	\$3,960,775	58.7%	-0.9%
Cape May	\$842,508	\$567,343	67.3%	\$886,753	\$590,444	66.6%	-0.8%
Cumberland	\$2,487,116	\$1,448,789	58.3%	\$2,618,163	\$1,505,494	57.5%	-0.7%
Essex	\$8,659,288	\$5,112,481	59.0%	\$9,051,257	\$5,276,770	58.3%	-0.7%
Gloucester	\$3,305,156	\$2,205,914	66.7%	\$3,384,560	\$2,249,268	66.5%	-0.3%
Hudson	\$6,059,902	\$3,968,506	65.5%	\$6,326,314	\$4,003,290	63.3%	-2.2%
Hunterdon	\$904,508	\$752,219	83.2%	\$867,444	\$731,752	84.4%	1.2%
Mercer	\$3,298,483	\$2,101,760	63.7%	\$3,512,202	\$2,191,492	62.4%	-1.3%
Middlesex	\$6,154,713	\$4,220,532	68.6%	\$6,445,357	\$4,388,409	68.1%	-0.5%
Monmouth	\$5,400,361	\$3,986,534	73.8%	\$5,297,037	\$3,831,518	72.3%	-1.5%
Morris	\$3,489,607	\$2,564,952	73.5%	\$3,519,420	\$2,544,756	72.3%	-1.2%
Ocean	\$5,197,051	\$3,724,335	71.7%	\$5,387,895	\$3,731,809	69.3%	-2.4%
Passaic	\$5,126,154	\$3,256,387	63.5%	\$5,466,765	\$3,385,825	61.9%	-1.6%
Salem	\$932,274	\$554,820	59.5%	\$950,184	\$549,477	57.8%	-1.7%
Somerset	\$2,192,526	\$1,810,120	82.6%	\$2,205,226	\$1,780,738	80.8%	-1.8%
Sussex	\$1,404,520	\$1,066,839	76.0%	\$1,375,246	\$1,016,804	73.9%	-2.0%
Union	\$5,894,529	\$3,877,288	65.8%	\$6,094,992	\$3,975,396	65.2%	-0.6%
Warren	\$987,423	\$746,417	75.6%	\$1,020,575	\$776,411	76.1%	0.5%
NJ TOTALS	\$83,079,225	\$55,951,844	67.3%	\$85,807,758	\$56,734,318	66.1%	-1.2%

SOURCE: NJKiDS (Based on Federal Performance Measures - OCSE-157)

TABLE 16:
OFFICE OF
CHILD SUPPORT
SERVICES

OFFICE OF CHILD SUPPORT SERVICES
STATE SUMMARY
TITLE IV-D CASES ARREARS COLLECTION REPORT
Comparison of February (FFY 2023 vs. FFY 2024)

County	FEBRUARY 2023			FEBRUARY 2024			Increase or Decrease (-) from FFY 2023 to FFY 2024
	Total Cases with Arrears	Total Amount Collected	Average Arrears Collection per Case	Total Cases with Arrears	Total Amount Collected	Average Arrears Collection per Case	
Atlantic	6,061	490,952	\$81.00	5,795	639,554	\$110.36	\$29.36
Bergen	6,415	967,365	\$150.80	6,227	897,609	\$144.15	-\$6.65
Burlington	6,838	765,608	\$111.96	6,492	823,306	\$126.82	\$14.85
Camden	13,810	1,269,160	\$91.90	13,178	1,210,228	\$91.84	-\$0.06
Cape May	1,587	205,212	\$129.31	1,532	126,662	\$82.68	-\$46.63
Cumberland	6,022	546,003	\$90.67	5,824	464,725	\$79.79	-\$10.87
Essex	17,911	1,816,153	\$101.40	17,164	1,760,619	\$102.58	\$1.18
Gloucester	5,452	533,781	\$97.91	5,197	526,643	\$101.34	\$3.43
Hudson	10,405	1,032,859	\$99.27	9,993	899,163	\$89.98	-\$9.29
Hunterdon	671	118,295	\$176.30	615	155,211	\$252.38	\$76.08
Mercer	6,760	623,814	\$92.28	6,491	597,522	\$92.05	-\$0.23
Middlesex	9,134	1,190,728	\$130.36	8,837	1,015,520	\$114.92	-\$15.45
Monmouth	6,504	955,723	\$146.94	6,177	793,994	\$128.54	-\$18.40
Morris	3,100	473,909	\$152.87	3,035	375,269	\$123.65	-\$29.23
Ocean	7,285	776,126	\$106.54	7,026	770,240	\$109.63	\$3.09
Passaic	9,354	1,008,604	\$107.83	9,198	978,984	\$106.43	-\$1.39
Salem	2,077	144,330	\$69.49	1,939	227,666	\$117.41	\$47.92
Somerset	2,292	358,371	\$156.36	2,176	295,336	\$135.72	-\$20.63
Sussex	1,422	177,070	\$124.52	1,385	172,553	\$124.59	\$0.07
Union	9,523	1,157,724	\$121.57	9,167	1,077,567	\$117.55	-\$4.02
Warren	1,359	152,024	\$111.86	1,323	117,665	\$88.94	-\$22.93
NJ TOTALS	133,982	\$14,763,811	\$110.19	128,771	\$13,926,036	\$108.15	-\$2.05

SOURCE: OCSE-157 Child Support Enforcement Annual Data Report

Table 17
WFNJ**WORK FIRST NEW JERSEY STATISTICAL SUMMARY****FEBRUARY 2024**

COUNTY	EMPLOYMENT DIRECTED ACTIVITIES			EMPLOYED OPEN (WFNJ RECIPIENT)	SUPPORT SERVICES ON ACTIVE CASE		CLOSED FOR EMPLOYMENT THIS MONTH	POST ASSISTANCE CHILD CARE
	CWEP	ALL OTHER TRAINING	JOB SEARCH		CHILD CARE	TRAINING REL. EXPENSES		
ATLANTIC	18	75	0	18	23	42	7	19
BERGEN	31	10	62	18	52	19	12	4
BURLINGTON	164	7	60	31	38	16	2	6
CAMDEN	33	143	4	41	81	7	14	2
CAPE MAY	2	8	5	3	4	2	0	2
CUMBERLAND	0	28	18	12	15	46	5	6
ESSEX	74	163	21	142	100	187	50	59
GLOUCESTER	0	1	3	23	6	2	3	18
HUDSON	5	279	58	98	236	106	30	30
HUNTERDON	0	0	0	0	1	0	0	0
MERCER	104	163	19	54	116	75	11	62
MIDDLESEX	0	45	49	32	59	1	5	3
MONMOUTH	4	19	17	25	22	5	4	33
MORRIS	0	3	0	1	1	0	1	0
OCEAN	0	120	0	1	8	8	3	11
PASSAIC	47	59	1	7	33	27	11	5
SALEM	0	9	6	0	3	1	2	3
SOMERSET	61	16	46	17	32	42	4	0
SUSSEX	0	1	0	3	0	0	1	1
UNION	125	31	4	28	23	16	8	0
WARREN	0	6	3	2	1	0	1	1
STATE TOTAL	668	1186	376	556	854	602	174	265

Data is derived from NJ Division of Family Development's FAMIS Reports RM064-01 & RM703-51, AdHoc Reports 5549 & 5598 and SDW Report WR00022WZ_CC

**DIVISION OF FAMILY DEVELOPMENT CURRENT PROGRAM STATISTICS
FEBRUARY 2024**

ACRONYMS

EMERGENCY ASSISTANCE (EA) - Payments to those eligible for WFNJ/TANF or WFNJ/GA, authorized during the 30 consecutive days immediately following the emergency (defined as a substantial loss of shelter, food, clothing, or household furnishings by fire, flood or other similar disaster) or if eligible individual or family is in an imminent or actual state of homelessness.

NJ SNAP - Formerly the Food Stamp Program, now known as NJ SNAP (NJ Supplemental Nutrition Assistance Program) authorized by Congress as a nutritional supplement program to provide low income households with more food of greater variety and better nutrition. Program eligibility is based on household income, resources, and expenses for medical, shelter, and dependent care. CWA staff refers certain recipients to the New Jersey Department of Labor for participation in the Food Stamp Employment and Training Program.

FAMIS: Family Assistance Management Information System

GAAS: General Assistance Automated System

NJKIDS: New Jersey Kids Deserve Support (Child Support Information Management System)

NJ MMIS SHARED DATA WAREHOUSE: The Shared Data Warehouse (SDW) is the repository for New Jersey's DFD and Medicaid data. Since 2003, OptumInsight has administered the SDW and provided access to the data through a reporting tool known as Business Objects.

OMEGA: Online Management of Economic Goal Achievement

SSI-EA: Supplemental Security Income-Emergency Assistance

WFNJ: Work First New Jersey - Fully implemented July 1, 1997, this is New Jersey's welfare reform program which responds to the requirements of the Federal Personal Responsibility and Work Opportunity Reconciliation Act (**PRWORA**) of 1996. PRWORA established Temporary Assistance for Needy Families (**TANF**) as the replacement for AFDC cash assistance. WFNJ includes two segments, **WFNJ/TANF** for families with children, and **WFNJ/GA** (General Assistance) for single adults and couples without dependent children. WFNJ emphasizes achieving self-sufficiency and limits lifetime receipt of financial assistance to a total of five years.

**DIVISION OF FAMILY DEVELOPMENT CURRENT PROGRAM STATISTICS
FEBRUARY 2024**

EXPLANATORY NOTES

The Department of Human Services Division of Family Development provides basic income and an opportunity to achieve self-sufficiency for individuals and families served by the Division's programs. The Division provides leadership, direction and supervision to those public agencies responsible for administering those programs and plans for and develops policies to promote self-sufficiency.

WFNJ STATISTICAL SUMMARY (TABLE 17)

Employment Directed Activities (EDA) - From Activities Summary Report (OMEGA report # RM064). Unduplicated count of persons participating in Community Work Experience Program (CWEP), All Other Training, or Job Search.

Number of Persons Employed This Month, Still Receiving TANF - Individuals with open "empl" activity on OMEGA. Ad hoc report.

Participants Receiving Child Care Services - From Issuance Disbursement Summary (OMEGA report # RM703). Total number of active participants who show receipt of Child Care.

Number of Persons Closed on FAMIS Due to Employment - From FAMIS report #5549-RM-2

Post TANF and Receiving Child Care - Persons no longer in receipt of TANF but still receiving child care. From Share Data Warehouse Child Care case count based on Child Care payments (SDW report WR00022WZ_CC).