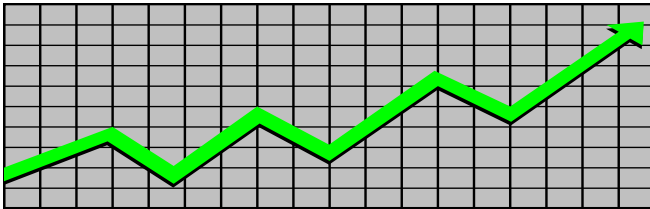


State of New Jersey
Department of Human Services
Division of Family Development

CURRENT PROGRAM STATISTICS



November 2024
Natasha Johnson, Assistant Commissioner

TABLE OF CONTENTS

HIGHLIGHTS:

WFNJ/TANF	ii
NJ SNAP	ii
EMERGENCY ASSISTANCE	ii
GENERAL ASSISTANCE	iii
GA Emergency Assistance.....	iii
GA Program.....	iii
CHILD SUPPORT SERVICES	iii
WORK FIRST NEW JERSEY (WFNJ)	iii
STATISTICS- BY STATE & COUNTY	1
Table 1: WFNJ/TANF Families & Persons (NJ Statewide) November 2022 to 2024.....	1
Table 2: WFNJ/TANF Families (by County)- November 2024.....	2
Table 2B: WFNJ/TANF Persons, Adults, & Children (by County)- November 2024.....	3
Table 3: TANF Work Participation Rates Over 12 Month Period (by County)- November 2024.....	4
Table 4: TANF Work Participation Rates Over 12 Month Period (NJ Statewide)- November 2024...	5
Table 5: NJ SNAP Households/Persons (NJ Statewide) November 2022 to 2024.....	6
Table 6: NJ SNAP Recipient Trends (NJ Statewide) November 2022 to 2024.....	7
Table 7: NJ SNAP Households/Persons (by County)- November 2024.....	8
Table 8: Emergency Assistance Program (NJ Statewide) November 2022 to 2024.....	9
Table 9: Emergency Assistance Program (by County)- November 2024.....	10
Table 10: General Assistance Program (NJ Statewide) November 2022 to 2024.....	11
Table 11: General Assistance Program (by County)- November 2024.....	12
Table 12: Child Support Services Distributions (NJ Statewide) FFY 2024.....	13
Table 13: Child Support Services Paternities Established- November 2024.....	14
Table 14: Child Support Services Cases With Orders- November 2024.....	15
Table 15: Child Support Services Collections On Current Support- November 2024.....	16
Table 16: Child Support Services Cases With Payments On Arrears- November 2024.....	17
Table 17: WFNJ Statistical Summary- November 2024.....	18
ACRONYMS	19
EXPLANATORY NOTES	20
WFNJ Statistical Summary (Table 17).....	20

DIVISION OF FAMILY DEVELOPMENT CURRENT PROGRAM STATISTICS

NOVEMBER 2024

Each month the Division of Family Development publishes its program statistics for: WFNJ/TANF, NJ SNAP, Emergency Assistance, General Assistance, and Child Support Services. When possible, information is provided separately for children and adults. Many tables also provide trend data with information broken down by county for readers to consider. This report is compiled and prepared by The Bureau of Research & Reporting.

WFNJ/TANF

- As of the end of November, the TANF caseload had decreased by 291 cases, from 11,748 in November 2023 to 11,457 in November 2024; a decrease of -2.5%.
- The counties with caseloads that increased the most since November 2023 were Gloucester (13.1%), Warren (8%), and Cape May (6.8%).
- The counties with caseloads that decreased the most since November 2023 were Hunterdon (-39.4%), Sussex (-27.6%), and Bergen (-19.2%).
- Of the WFNJ/TANF cases, 2,336 or 20.4% were child-only in November 2024.
- The counties with the most child-only cases were Camden (388), Hudson (322), and Essex (238).
- Hudson (5,470), Essex (4,290), and Camden (4,099) counties had the greatest number of persons receiving TANF in November 2024.

NJ SNAP (Formerly FOOD STAMPS)

- In November 2024, there were 447,520 households receiving NJ SNAP benefits. The number of NJ SNAP households increased by 30,716 or 7.4%, since November 2023.
- There were 837,948 persons receiving NJ SNAP benefits as of November 2024; an increase of 41,089 or 5.2% since November 2023.
- The counties having the highest SNAP caseload increase since November 2023 were Essex (17.5%), Morris (11.6%), and Gloucester (11.1%).
- The county caseloads did not increase since November 2023

EMERGENCY ASSISTANCE

- There were 1,650 TANF families receiving Emergency Assistance (EA) in November 2024; an increase of 186 or 12.7% since November 2023.
- In November 2024, EA payments were made for 565 SSI recipients.

DIVISION OF FAMILY DEVELOPMENT CURRENT PROGRAM STATISTICS NOVEMBER 2024

- There were 2,171 GA cases with Emergency Assistance payments in November 2024; an increase of 457 or 26.7% since November 2023.
- The counties that showed the highest percent increase in Emergency Assistance payments were Sussex (500%), Gloucester (193.8%), and Passaic (171.7%).
- The counties that showed the highest percent decrease in Emergency Assistance payments were Hunterdon (-63.3%), Union (-19.7%), and Essex (-5.7%).

GENERAL ASSISTANCE

- The total numbers of cases receiving GA has increased from 13,225 to 16,058 since November 2023; an increase of 21.4%.
- There were 12,019 Employable GA and 4,039 Unemployable GA cases in November 2024.
- The counties that showed a percent increase for GA cases were Passaic (55.2%), Salem (51.2%), and Gloucester (47.6%) since November 2023.
- The counties that showed the highest percent decrease for GA cases since November 2023 were Hunterdon (-32.4%), Ocean (-4.5%), and Bergen (-3.7%).
- In November 2024, GA cases showed a -1.32% decrease since October 2024.

CHILD SUPPORT SERVICES (QUARTERLY REPORT)

- The total collection for the Child Support Services Program was about \$258 million from July 2024 to September 2024; a decrease of -0.67% over the same period from FFY 2023.
- Total distributions decreased -1.6% from September 2023.

WORK FIRST NEW JERSEY (WFNJ)

- During the report month of November 2024, there were 630 families in which at least one member was employed and an additional 183 families whose WFNJ assistance cases were closed due to employment - related earnings.
- The three counties with the greatest number of employed active WFNJ recipients were: Essex (128), Hudson (105), and Mercer (68).
- There were 242 former TANF cases receiving post-TANF support in the form of child care assistance.

TABLE 1: WFNJ/TANF PROGRAM

STATEWIDE NUMBER OF APPLICATIONS AND TERMINATIONS DURING NOVEMBER 2024

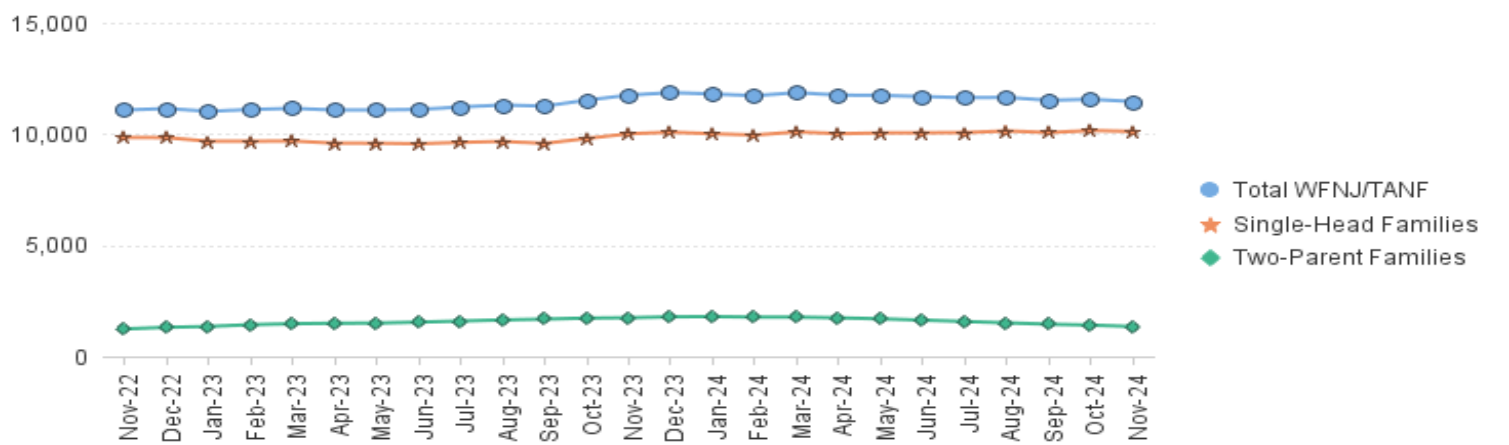
NUMBER OF ELIGIBLE FAMILIES & PERSONS RECEIVING WFNJ/TANF FOR NOVEMBER 2024

NOVEMBER 2022 THROUGH NOVEMBER 2024												
		Cases Added	Cases Closed	Child-Only Cases ‡	Total Single-Head Families	2-Parent Families	Total WFNJ/TANF Families	%CHNG (1 Yr.)	Total Persons	%CHNG (1 Yr.)	Adults	Children
2022	NOV	801	822	2,573	9,843	1,234	11,077	18.4%	29,858	23.0%	9,738	20,120
	DEC	747	792	2,578	9,837	1,308	11,145	15.4%	30,064	19.4%	9,875	20,189
2022	Average	699	623	2,701	9,755	939	10,693		28,466		8,931	19,535
2023	JAN	669	792	2,560	9,674	1,346	11,020	12.0%	29,683	15.1%	9,806	19,877
	FEB	760	717	2,531	9,676	1,426	11,102	9.8%	30,019	12.7%	9,997	20,022
	MAR	822	864	2,565	9,683	1,470	11,153	7.5%	30,069	9.6%	10,058	20,011
	APR	739	858	2,548	9,587	1,490	11,077	5.9%	29,826	7.5%	10,019	19,807
	MAY	825	813	2,523	9,586	1,498	11,084	4.4%	29,863	6.0%	10,059	19,804
	JUN	827	855	2,500	9,562	1,540	11,102	4.0%	29,926	5.8%	10,142	19,784
	JUL	823	764	2,487	9,624	1,590	11,214	2.7%	30,222	4.1%	10,317	19,905
	AUG	887	841	2,445	9,666	1,638	11,304	2.5%	30,533	3.7%	10,497	20,036
	SEP	912	1,097	2,410	9,577	1,677	11,254	2.0%	30,443	3.2%	10,521	19,922
	OCT	944	891	2,463	9,800	1,722	11,522	4.3%	31,139	5.2%	10,781	20,358
	NOV	859	795	2,495	10,011	1,737	11,748	6.1%	31,776	6.4%	10,990	20,786
	DEC	900	836	2,484	10,080	1,781	11,861	6.4%	32,067	6.7%	11,158	20,909
2023	Average	831	844	2,501	9,711	1,576	11,287		30,464		10,362	20,102
2024	JAN	819	879	2,456	10,010	1,790	11,800	7.1%	31,992	7.8%	11,134	20,858
	FEB	743	865	2,451	9,953	1,768	11,721	5.6%	31,775	5.8%	11,038	20,737
	MAR	784	797	2,453	10,095	1,767	11,862	6.4%	32,088	6.7%	11,176	20,912
	APR	832	944	2,414	10,014	1,733	11,747	6.0%	31,674	6.2%	11,066	20,608
	MAY	805	869	2,435	10,047	1,689	11,736	5.9%	31,556	5.7%	10,990	20,566
	JUN	816	920	2,444	10,054	1,631	11,685	5.3%	31,338	4.7%	10,872	20,466
	JUL	802	853	2,383	10,064	1,569	11,633	3.7%	31,312	3.6%	10,819	20,493
	AUG	864	932	2,370	10,138	1,508	11,646	3.0%	31,376	2.8%	10,784	20,592
	SEP	759	890	2,345	10,066	1,448	11,514	2.3%	30,858	1.4%	10,617	20,241
	OCT	894	894	2,352	10,157	1,406	11,563	0.4%	30,962	-0.6%	10,617	20,345
	NOV	797	936	2,336	10,115	1,342	11,457	-2.5%	30,753	-3.2%	10,463	20,290
2024	Average To Date	810	889	2,404	10,065	1,605	11,669		31,426		10,871	20,555

NJ STATEWIDE

Eligible Families Receiving WFNJ/TANF

NOVEMBER 2022 THROUGH NOVEMBER 2024

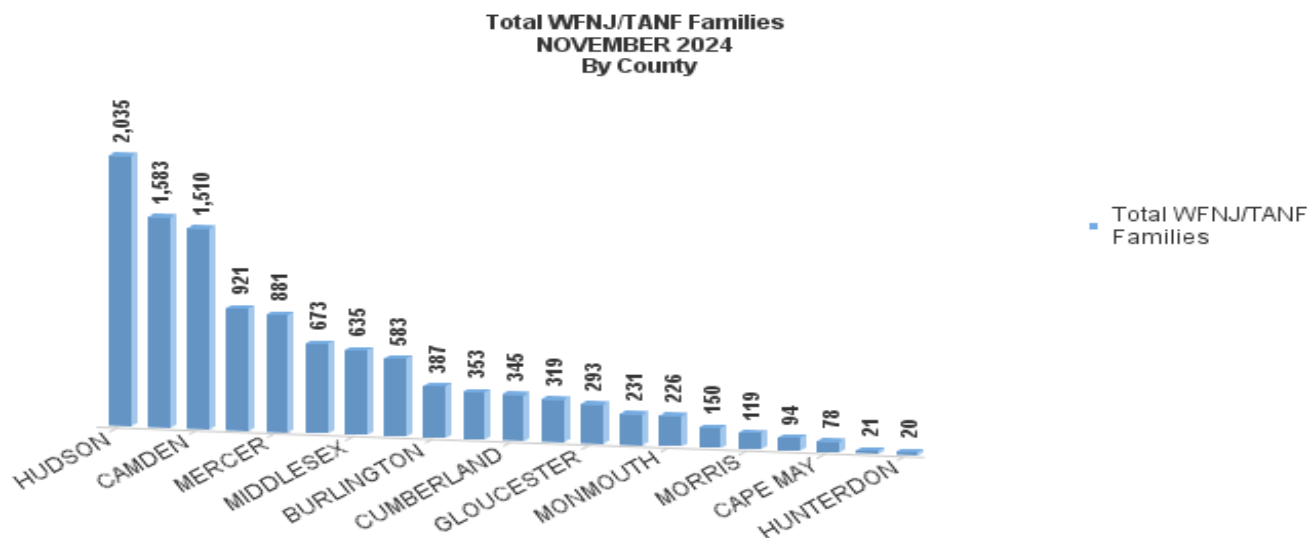


Data is derived from NJ MMIS Shared Data Warehouse Issuance files.
Effective July 2013 this data query source was converted to the SDW

‡ Child-only cases are defined as families in which no eligible adult receives TANF program benefits, yet the family continues to be headed by atleast one of the biological parents, or grandparents, or other appropriate adult.

TABLE 2:
WFNJ/TANF PROGRAM **NUMBER OF APPLICATIONS AND TERMINATIONS BY COUNTY DURING NOVEMBER 2024**
NUMBER OF ELIGIBLE FAMILIES RECEIVING WFNJ/TANF FOR NOVEMBER 2024

County	Cases Added	Cases Closed **	Child-Only Cases ‡	1-Adult Cases	Total Single-Head Families	2-Parent Families	Total WFNJ/TANF Families	%CHNG (3 Mon)	%CHNG (1 Yr.)
ATLANTIC	44	50	179	351	530	53	583	-2.3%	-6.4%
BERGEN	25	43	55	226	281	38	319	-5.9%	-19.2% *
BURLINGTON	32	25	95	262	357	30	387	4.9%	2.7%
CAMDEN	60	99	388	996	1,384	126	1,510	0.5%	-5.3%
CAPE MAY	10	8	22	47	69	9	78	8.3%	6.8% Δ
CUMBERLAND	25	28	99	217	316	29	345	0.9%	2.4%
ESSEX	148	109	238	1,009	1,247	336	1,583	1.4%	-9.1%
GLOUCESTER	28	23	67	203	270	23	293	10.6%	13.1% Δ
HUDSON	142	170	322	1,477	1,799	236	2,035	-1.6%	3.1%
HUNTERDON	3	15	4	13	17	3	20	-44.4%	-39.4% *
MERCER	47	75	182	608	790	91	881	-1.1%	-2.0%
MIDDLESEX	39	58	172	417	589	46	635	-3.1%	5.3%
MONMOUTH	16	22	48	168	216	10	226	-2.2%	-9.2%
MORRIS	8	15	24	75	99	20	119	-4.8%	1.7%
OCEAN	27	21	59	258	317	36	353	0.9%	6.0%
PASSAIC	45	56	180	663	843	78	921	1.4%	1.9%
SALEM	15	21	30	110	140	10	150	-2.0%	-5.7%
SOMERSET	15	20	46	168	214	17	231	-0.9%	-4.5%
SUSSEX	3	7	6	13	19	2	21	-25.0%	-27.6% *
UNION	56	67	98	432	530	143	673	-4.8%	-6.4%
WARREN	9	4	22	66	88	6	94	16.0%	8.0% Δ
NJ Total	797	936	2,336	7,779	10,115	1,342	11,457	-0.5%	-2.5%



Data is derived from NJ MMIS Shared Data Warehouse Issuance files.
Effective July 2013 this data query source was converted to the SDW

‡ Child-only cases are defined as families in which no eligible adult receives TANF program benefits, yet the family continues to be headed by at least one of the biological parents, or grandparents, or other appropriate adult

** 'Cases closed' include cases that received a benefit in the prior month, but did not receive any TANF benefit for the report month.

Δ=higher caseload % change

*=lower caseload % change

TABLE 2B :
WFNJ/TANF
PROGRAM

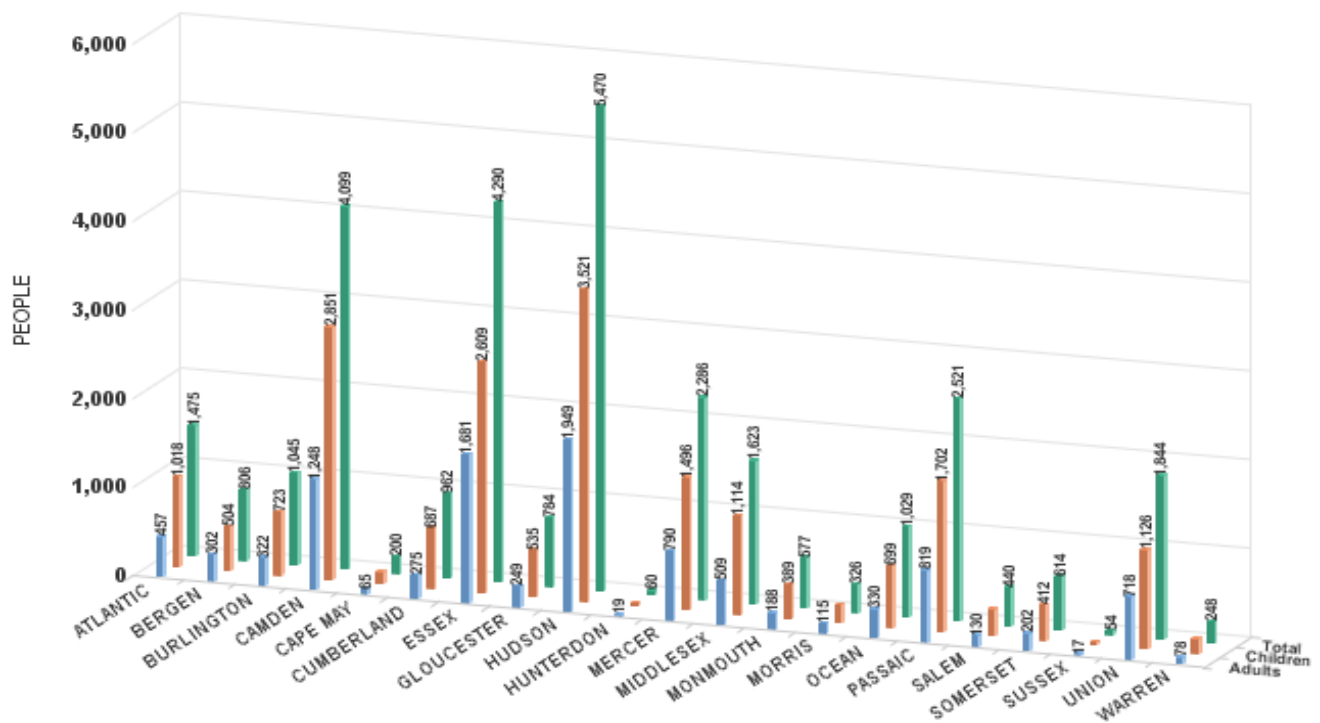
NUMBER OF PARTICIPATING PERSONS, ADULTS, AND CHILDREN
BY COUNTY FOR NOVEMBER 2024

PERSONS

County	Adults	Children	Child/Adult Ratio	Total Persons	% Chng (1 Yr)	Persons Per Case
ATLANTIC	457	1,018	2.23	1,475	-7.8%	2.53
BERGEN	302	504	1.67	806	-22.5% *	2.53
BURLINGTON	322	723	2.25	1,045	3.8% Δ	2.70
CAMDEN	1,248	2,851	2.28	4,099	-4.2%	2.71
CAPE MAY	65	135	2.08	200	3.1%	2.56
CUMBERLAND	275	687	2.50	962	2.3%	2.79
ESSEX	1,681	2,609	1.55	4,290	-11.1%	2.71
GLOUCESTER	249	535	2.15	784	9.8% Δ	2.68
HUDSON	1,949	3,521	1.81	5,470	3.1%	2.69
HUNTERDON	19	41	2.16	60	-32.6% *	3.00
MERCER	790	1,496	1.89	2,286	-5.7%	2.59
MIDDLESEX	509	1,114	2.19	1,623	3.2%	2.56
MONMOUTH	188	389	2.07	577	-12.0%	2.55
MORRIS	115	211	1.83	326	-1.5%	2.74
OCEAN	330	699	2.12	1,029	7.6% Δ	2.92
PASSAIC	819	1,702	2.08	2,521	1.6%	2.74
SALEM	130	310	2.38	440	-1.3%	2.93
SOMERSET	202	412	2.04	614	-4.4%	2.66
SUSSEX	17	37	2.18	54	-25.0% *	2.57
UNION	718	1,126	1.57	1,844	-6.0%	2.74
WARREN	78	170	2.18	248	3.3%	2.64
NJ Total	10,463	20,290	1.94	30,753	-3.2%	2.68

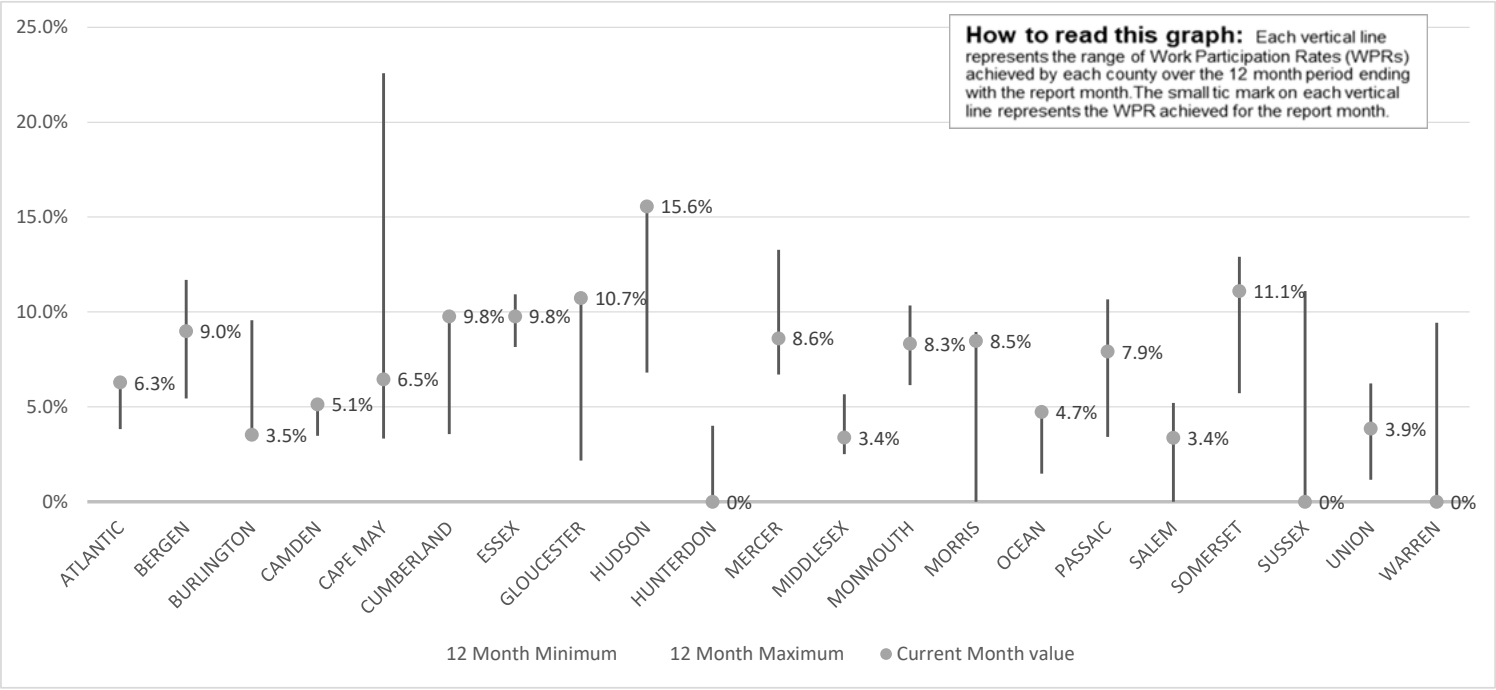
Δ=higher caseload % change

*=lower caseload % change



Data is derived from NJ MMIS Shared Data Warehouse Issuance files.
 Effective July 2013 this data query source was converted to the SDW

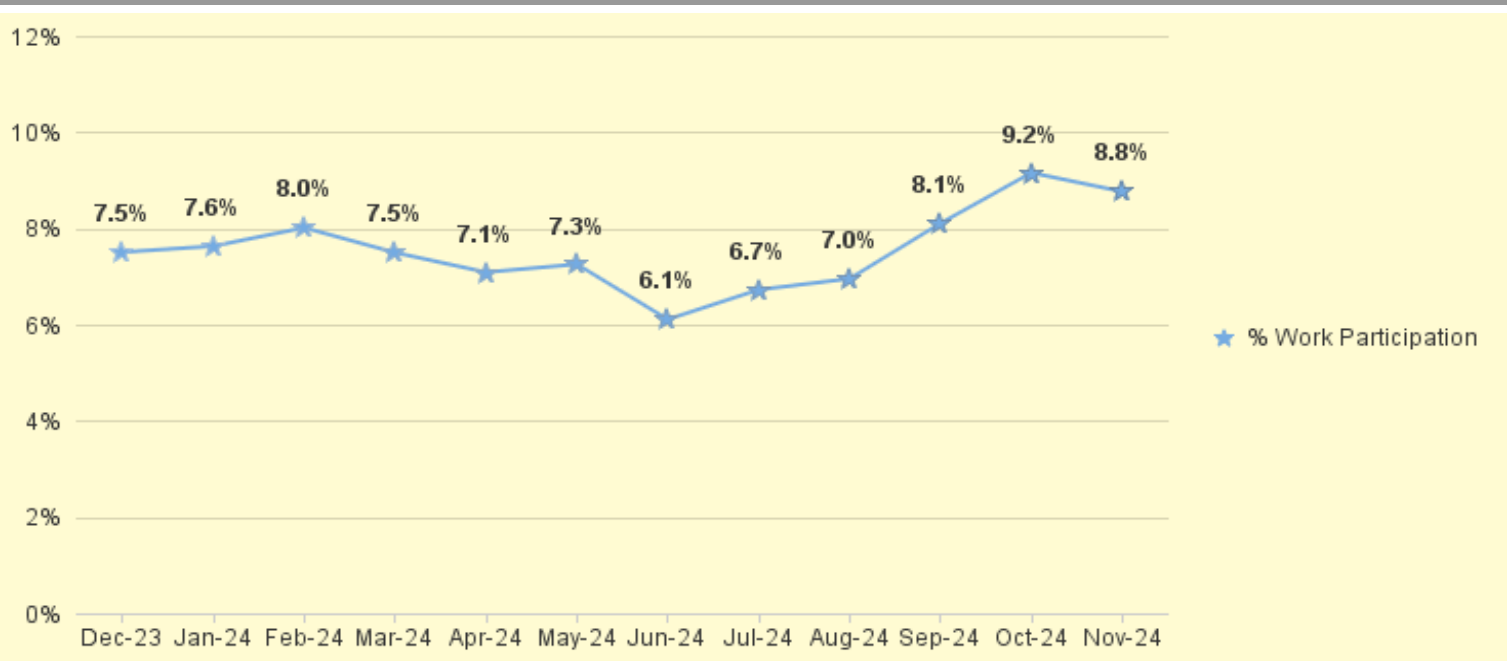
TABLE 3 :
Work Participation Rates Achieved Over 12 Month Period
Ending with NOVEMBER 2024



Data is derived from NJ MMIS Shared Data Warehouse Issuance files.
Effective July 2013 this data query source was converted to the SDW

TABLE 4 :

WFNJ/TANF Work Participation Rates
for 12-Month Period Ending with NOVEMBER 2024 Statewide



* The Work Participation rate measures the number of countable Temporary Assistance for Needs Families (TANF) participants based on federal formula. The reported rate is considered to be preliminary until officially calculated by the federal government soon after the close of each federal fiscal year.

TABLE 5 :
NJ SNAP
(FOOD STAMPS)

NUMBER OF PARTICIPATING HOUSEHOLDS, PERSONS, ADULTS
AND CHILDREN FOR NOVEMBER 2024 (STATEWIDE)

NOVEMBER 2022 THROUGH NOVEMBER 2024

		HOUSEHOLDS				PERSONS					People with a disability
		WFNJ/ TANF	Other low income	Total	% CHNG (1 YR)	Adults	Children	TOTAL	% CHNG (1 YR)	Age 60+	
2022	NOV	10,978	386,385	397,363	-14.6%	436,125	332,459	768,584	-14.4%	153,574	221,980
	DEC	11,094	393,042	404,136	-13.7%	443,837	340,993	784,830	-13.1%	155,061	227,586
2022	Average	11,011	418,196	429,207		469,290	362,512	831,802		154,511	227,191
2023	JAN	11,120	388,312	399,432	-14.7%	438,140	336,442	774,582	-14.2%	153,633	223,462
	FEB	10,806	388,213	399,019	-13.7%	437,832	336,772	774,604	-12.9%	154,374	223,539
	MAR	12,027	407,914	419,941	-10.0%	460,274	373,470	833,744	-7.1%	156,031	227,136
	APR	11,987	408,628	420,615	-6.6%	460,514	370,535	831,049	-4.1%	156,584	227,434
	MAY	11,026	397,178	408,204	-6.0%	446,453	341,774	788,227	-5.6%	157,317	225,010
	JUN	11,193	399,666	410,859	-2.9%	449,079	343,009	792,088	-2.7%	157,999	225,250
	JUL	11,874	408,109	419,983	2.0%	458,990	363,129	822,119	3.4%	158,680	226,431
	AUG	11,445	398,827	410,272	-5.5%	448,110	340,718	788,828	-10.0%	158,893	224,313
	SEP	11,607	397,739	409,346	1.6%	446,467	338,291	784,758	-0.6%	160,208	225,665
	OCT	11,862	399,663	411,525	4.1%	448,591	338,651	787,242	3.2%	161,651	226,946
	NOV	11,994	404,810	416,804	4.9%	453,939	342,920	796,859	3.7%	162,683	227,481
	DEC	12,360	413,594	425,954	5.4%	464,039	351,241	815,280	3.9%	164,787	233,859
2023	Average	11,608	401,054	412,663		451,036	348,079	799,115		158,570	226,377
2024	JAN	12,147	413,384	425,531	6.5%	462,636	348,128	810,764	4.7%	164,794	231,669
	FEB	11,859	416,486	428,345	7.3%	465,489	348,007	813,496	5.0%	165,676	231,340
	MAR	12,058	426,988	439,046	4.5%	476,761	357,715	834,476	0.1%	167,855	233,743
	APR	11,717	426,510	438,227	4.2%	474,957	354,424	829,381	-0.2%	168,166	233,544
	MAY	11,715	431,264	442,979	8.5%	479,707	356,729	836,436	6.1%	169,629	234,656
	JUN	11,848	435,764	447,612	8.9%	484,805	359,806	844,611	6.6%	171,199	235,765
	JUL	11,626	432,725	444,351	5.8%	481,340	354,315	835,655	1.6%	171,322	234,963
	AUG	12,047	438,849	450,896	9.9%	488,286	358,835	847,121	7.4%	172,882	236,688
	SEP	11,733	432,439	444,172	8.5%	480,588	350,383	830,971	5.9%	172,370	235,245
	OCT	11,714	435,963	447,677	8.8%	484,036	353,435	837,471	6.4%	173,563	236,826
	NOV	11,621	435,899	447,520	7.4%	483,897	354,051	837,948	5.2%	174,605	237,983
2024	Average To Date	11,826	429,661	441,487		478,409	354,166	832,575		170,187	234,766

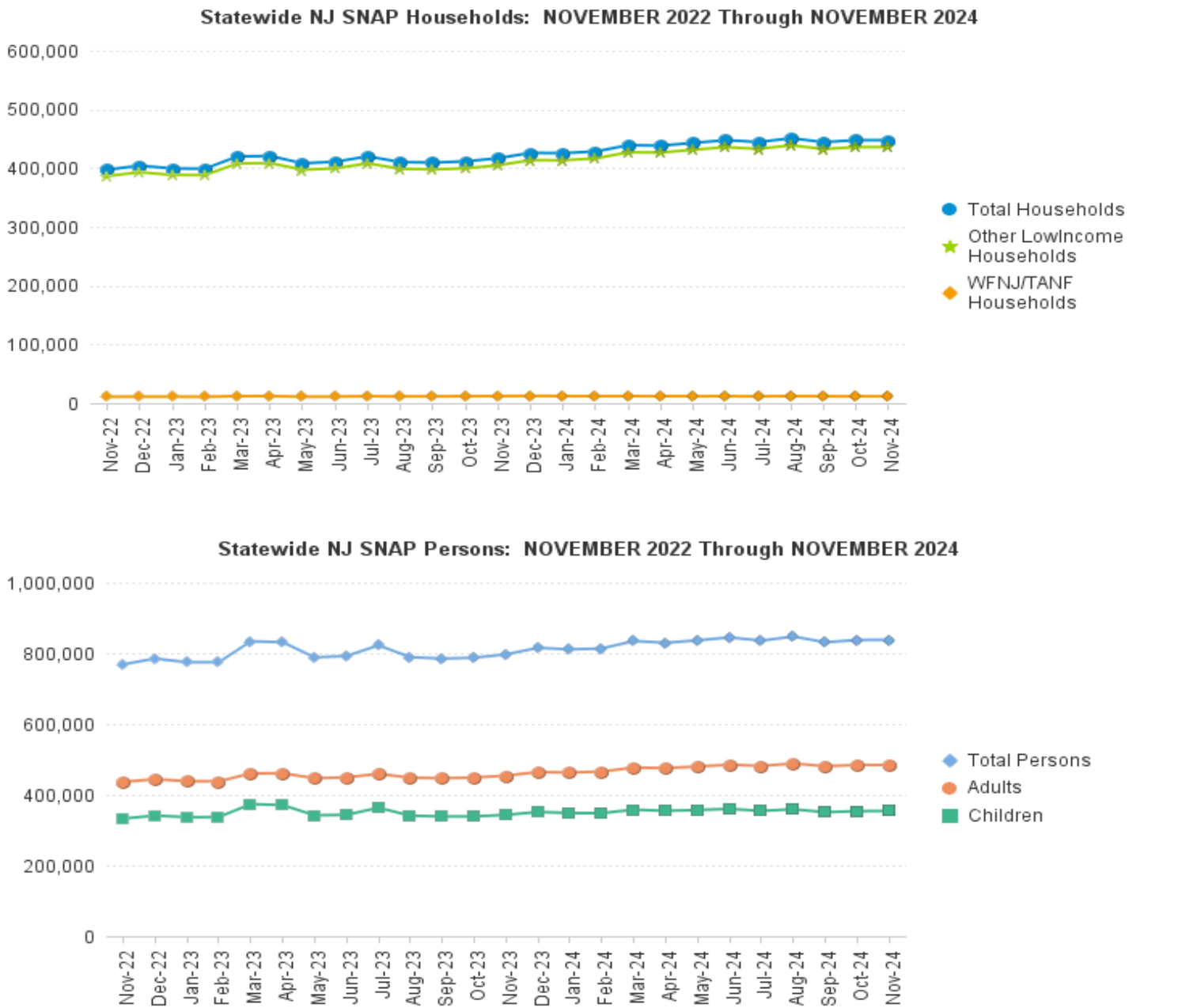
This Table is based on those Households & Persons that recived SNAP issuances (benefits) during the month

Data is derived from NJ MMIS Shared Data Warehouse.

Effective July 2013 this data query source was converted to the SDW.

* Age 60+ and People with a disability columns are independent subsets of total persons. An individual might appear in both columns

TABLE 6: NJ SNAP (FOOD STAMPS)
TRENDS FOR PARTICIPATING HOUSEHOLDS & PERSONS
NOVEMBER 2022 THROUGH NOVEMBER 2024 (STATEWIDE)



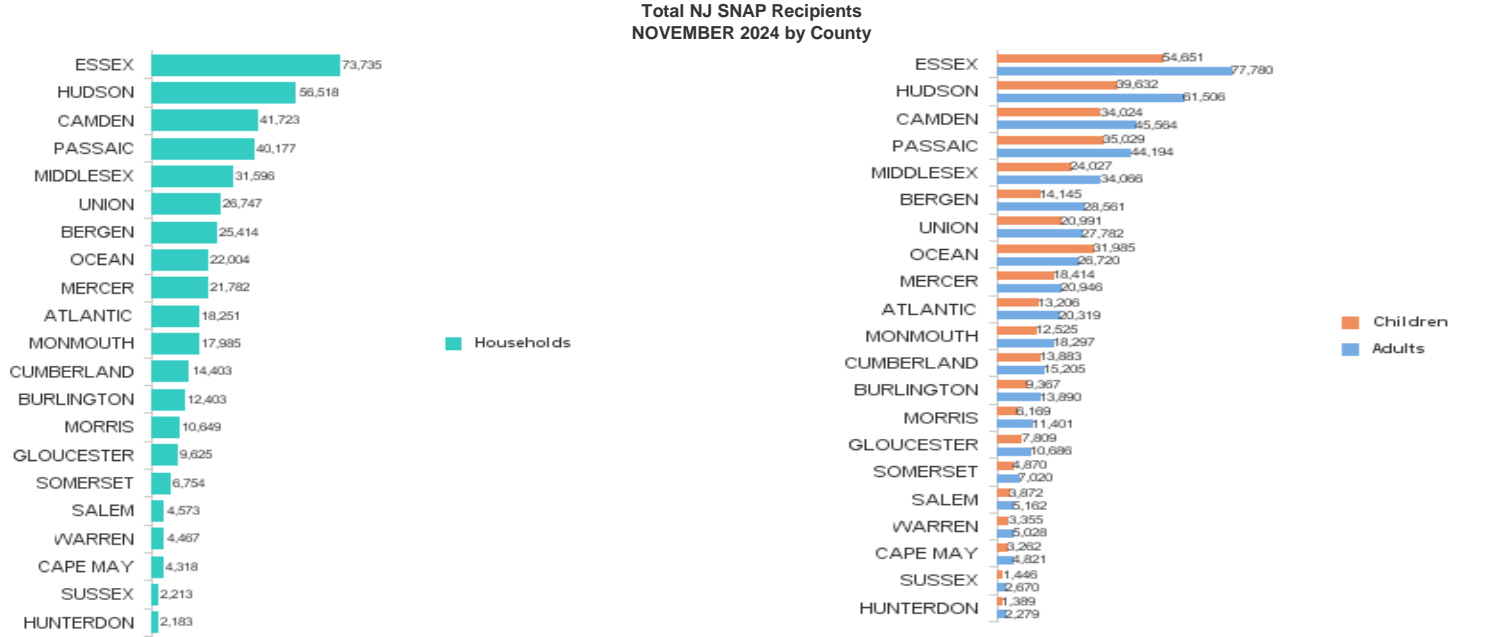
Data is derived from NJ MMIS Shared Data Warehouse Issuance files.
Effective July 2013 this data query source was converted to the SDW

TABLE 7 :
NJ SNAP

NUMBER OF PARTICIPATING HOUSEHOLDS, PERSONS, ADULTS
AND CHILDREN BY COUNTY FOR NOVEMBER 2024

County	HOUSEHOLDS				PERSONS				Age 60+	People with a disability
	WFNJ/ TANF	Other low income	TOTAL	% Chng (1 Yr)	Adults	Children	TOTAL	% Chng (1 Yr)		
ATLANTIC	547	17,704	18,251	0.1% *	20,319	13,206	33,525	-2.1% *	7,021	10,190
BERGEN	334	25,080	25,414	6.0%	28,561	14,145	42,706	5.6%	15,797	17,651
BURLINGTON	605	11,798	12,403	6.1%	13,890	9,367	23,257	4.6%	4,283	7,216
CAMDEN	1,433	40,290	41,723	5.6%	45,564	34,024	79,588	3.1%	12,491	20,679
CAPE MAY	80	4,238	4,318	3.7%	4,821	3,262	8,083	2.6%	1,470	2,332
CUMBERLAND	341	14,062	14,403	6.1%	15,205	13,883	29,088	4.6%	4,143	7,677
ESSEX	1,808	71,927	73,735	17.5% Δ	77,780	54,651	132,431	13.5% Δ	22,950	32,530
GLOUCESTER	292	9,333	9,625	11.1% Δ	10,686	7,809	18,495	11.3% Δ	3,412	6,448
HUDSON	1,887	54,631	56,518	2.4% *	61,506	39,632	101,138	-0.5% *	24,696	29,741
HUNTERDON	30	2,153	2,183	3.4% *	2,279	1,389	3,668	4.7%	914	1,296
MERCER	859	20,923	21,782	10.3%	20,946	18,414	39,360	8.5%	6,316	10,870
MIDDLESEX	646	30,950	31,596	7.8%	34,066	24,027	58,093	6.8%	15,661	19,335
MONMOUTH	255	17,730	17,985	3.7%	18,297	12,525	30,822	2.0%	7,677	10,336
MORRIS	144	10,505	10,649	11.6% Δ	11,401	6,169	17,570	10.6% Δ	5,736	6,236
OCEAN	345	21,659	22,004	4.1%	26,720	31,985	58,705	0.4% *	8,070	11,711
PASSAIC	909	39,268	40,177	5.5%	44,194	35,029	79,223	3.6%	17,088	20,366
SALEM	149	4,424	4,573	6.9%	5,162	3,872	9,034	3.7%	1,349	2,428
SOMERSET	226	6,528	6,754	7.9%	7,020	4,870	11,890	5.6%	3,025	4,093
SUSSEX	35	2,178	2,213	3.7%	2,670	1,446	4,116	2.4%	1,016	1,609
UNION	595	26,152	26,747	7.2%	27,782	20,991	48,773	8.4%	9,870	12,528
WARREN	101	4,366	4,467	7.3%	5,028	3,355	8,383	6.8%	1,620	2,711
NJ TOTAL	11,621	435,899	447,520	7.4%	483,897	354,051	837,948	5.2%	174,605	237,983

Δ=higher caseload % change *=lower caseload % change

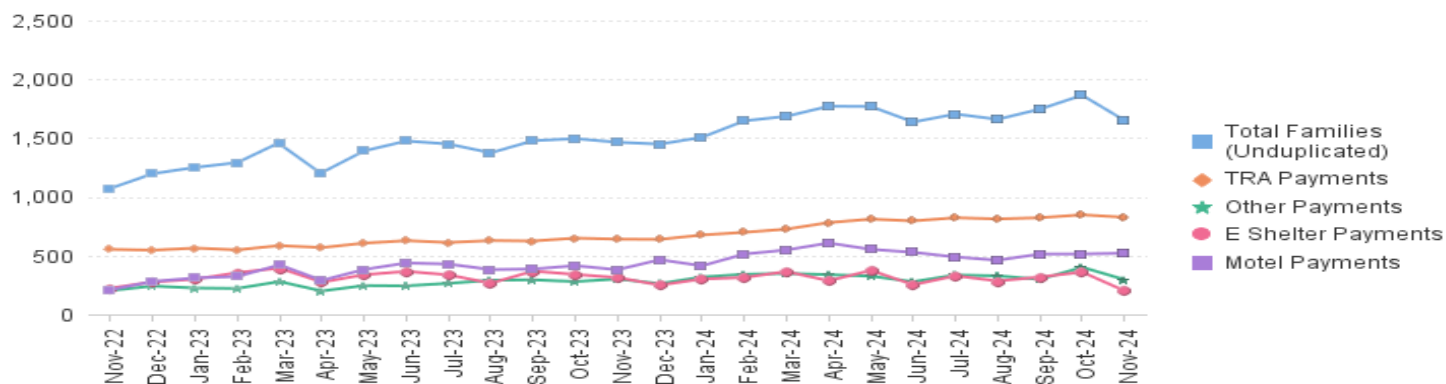


Data is derived from NJ MMIS Shared Data Warehouse.
Effective July 2013 this data query source was converted to the SDW.
* Age 60+ and People with a disability columns are independent subsets of total persons. An individual might appear in both columns

TABLE 8 :
EMERGENCY ASSISTANCE (STATEWIDE)
TOTAL NUMBER OF ELIGIBLE FAMILIES RECEIVING EMERGENCY ASSISTANCE PAYMENTS
NOVEMBER 2022 THROUGH NOVEMBER 2024 - STATEWIDE

		Total WFNJ/EA Families (Undupl)	% CHNG (1 YR)	Temp Rent Asst. Payments (Undupl)	% CHNG (1 YR)	Motel Housing Payments (Undupl)	% CHNG (1 YR)	Shelter/Transitional Housing Payments (Undupl)	% CHNG (1 YR)	Other WFNJ/EA Payments (Undupl)	% CHNG (1 YR)
2022	NOV	1,072	-13.8%	553	-34.6%	210	92.7%	223	-1.3%	203	5.2%
	DEC	1,197	-6.3%	546	-33.9%	280	120.5%	276	10.4%	241	50.6%
2022	Average	1,296		723		204		289		230	
2023	JAN	1,250	4.5%	564	-20.1%	310	148.0%	299	4.9%	224	19.8%
	FEB	1,291	6.0%	549	-23.8%	322	113.2%	355	29.6%	221	5.2%
	MAR	1,462	4.7%	585	-24.3%	421	112.6%	394	18.7%	279	3.0%
	APR	1,206	-5.9%	568	-27.8%	289	72.0%	274	3.4%	199	-11.9%
	MAY	1,390	1.0%	606	-23.5%	382	109.9%	337	2.7%	245	2.5%
	JUN	1,475	6.3%	627	-21.7%	437	95.1%	366	32.1%	243	12.5%
	JUL	1,449	8.7%	612	-24.6%	428	101.9%	336	38.8%	264	3.5%
	AUG	1,374	-8.9%	628	-26.0%	381	56.8%	265	-26.0%	290	19.3%
	SEP	1,477	7.2%	624	-16.5%	386	76.3%	368	9.2%	294	46.3%
	OCT	1,495	23.9%	649	9.6%	414	76.9%	340	26.9%	279	3.7%
	NOV	1,464	36.6%	640	15.7%	380	81.0%	313	40.4%	301	48.3%
	DEC	1,448	21.0%	638	16.8%	465	66.1%	249	-9.8%	262	8.7%
2023	Average	1,398		608		385		325		258	
2024	JAN	1,506	20.5%	675	19.7%	413	33.2%	301	0.7%	318	42.0%
	FEB	1,646	27.5%	698	27.1%	513	59.3%	314	-11.5%	341	54.3%
	MAR	1,685	15.3%	725	23.9%	548	30.2%	364	-7.6%	348	24.7%
	APR	1,770	46.8%	781	37.5%	607	110.0%	286	4.4%	338	69.8%
	MAY	1,768	27.2%	810	33.7%	553	44.8%	374	11.0%	325	32.7%
	JUN	1,636	10.9%	795	26.8%	528	20.8%	252	-31.1%	278	14.4%
	JUL	1,704	17.6%	822	34.3%	488	14.0%	328	-2.4%	335	26.9%
	AUG	1,659	20.7%	812	29.3%	461	21.0%	284	7.2%	328	13.1%
	SEP	1,746	18.2%	822	31.7%	513	32.9%	318	-13.6%	298	1.4%
	OCT	1,864	24.7%	847	30.5%	514	24.2%	360	5.9%	401	43.7%
	NOV	1,650	12.7%	826	29.1%	520	36.8%	201	-35.8%	296	-1.7%
2024	Average To Date	1,694		783		514		307		328	

NJ STATEWIDE
Families Receiving Emergency Assistance
NOVEMBER 2022 THROUGH NOVEMBER 2024



* Effective Feb '11 Transitional Housing Payments were removed from 'Other EA Payments' and added to 'Shelter Payments'.

**TABLE 9 :
EMERGENCY ASSISTANCE (BY COUNTY)
TOTAL NUMBER OF ELIGIBLE FAMILIES RECEIVING EMERGENCY ASSISTANCE PAYMENTS
BY COUNTY (UNDULICATED CASES) FOR NOVEMBER 2024**

County	TOTAL WFNJ/EA Families (Undupl)	% CHNG From NOV 23	Temp Rent Asst. Payments (Undupl)	Motel Housing Payments (Undupl)	Shelter/Transitional Housing Payments (Undupl)	Other WFNJ/EA Payments (Undupl)	SSI Recipients Receiving EA **
ATLANTIC	47	2.2%	29	10	0	13	49
BERGEN	49	16.7%	22	6	11	13	12
BURLINGTON	215	104.8%	15	155	47	3	9
CAMDEN	58	-4.9%	10	26	19	8	10
CAPE MAY	29	61.1%	8	22	0	1	13
CUMBERLAND	9	-10.0%	0	0	8	1	1
ESSEX	77	-51.6%	51	0	18	12	14
GLOUCESTER	21	-12.5%	2	11	10	10	20
HUDSON	399	29.5%	283	92	11	79	106
HUNTERDON	2	-66.7%	0	2	0	0	0
MERCER	175	8.0%	87	62	0	46	73
MIDDLESEX	60	-10.4%	45	1	0	22	55
MONMOUTH	10	-77.8%	0	9	0	1	42
MORRIS	37	85.0%	12	23	2	4	37
OCEAN	58	1.8%	29	27	0	11	8
PASSAIC	186	15.5%	141	9	26	26	42
SALEM	4	-20.0%	3	0	0	2	2
SOMERSET	94	5.6%	45	36	6	29	46
SUSSEX	2	-33.3%	0	1	2	0	2
UNION	106	49.3%	38	24	40	12	23
WARREN	12	140.0%	6	4	1	3	1
NJ Total	1,650	12.7%	826	520	201	296	565

Δ=higher caseload % change

*=lower caseload % change

** SSI-EA includes pay codes 22 and 24, data is derived from NJ Division of Family Development FAMIS Report #FM430-03A

WFNJ/EA data is derived from NJ MMIS Shared Data Warehouse.

Effective July 2013 this data query source was converted to the SDW.

**Number WFNJ Families Receiving EA by County
NOVEMBER 2024**

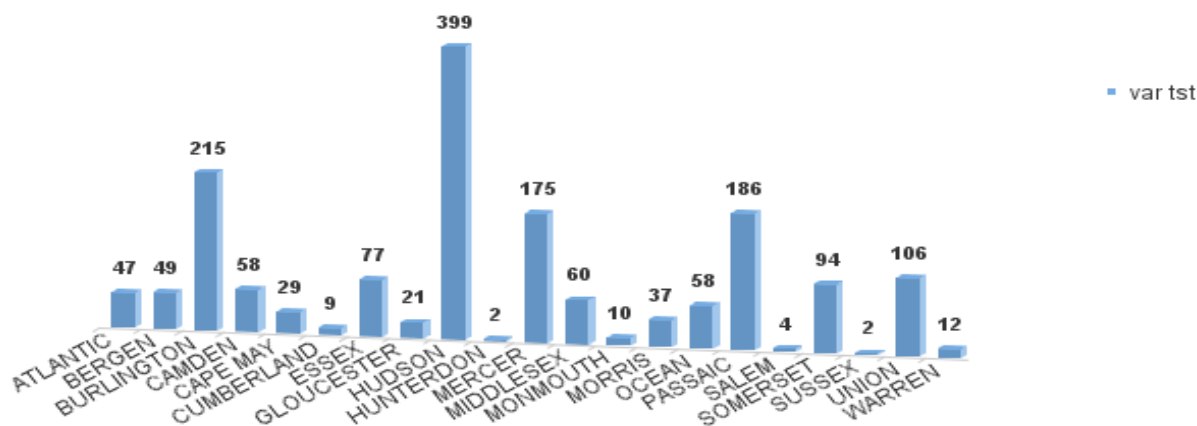
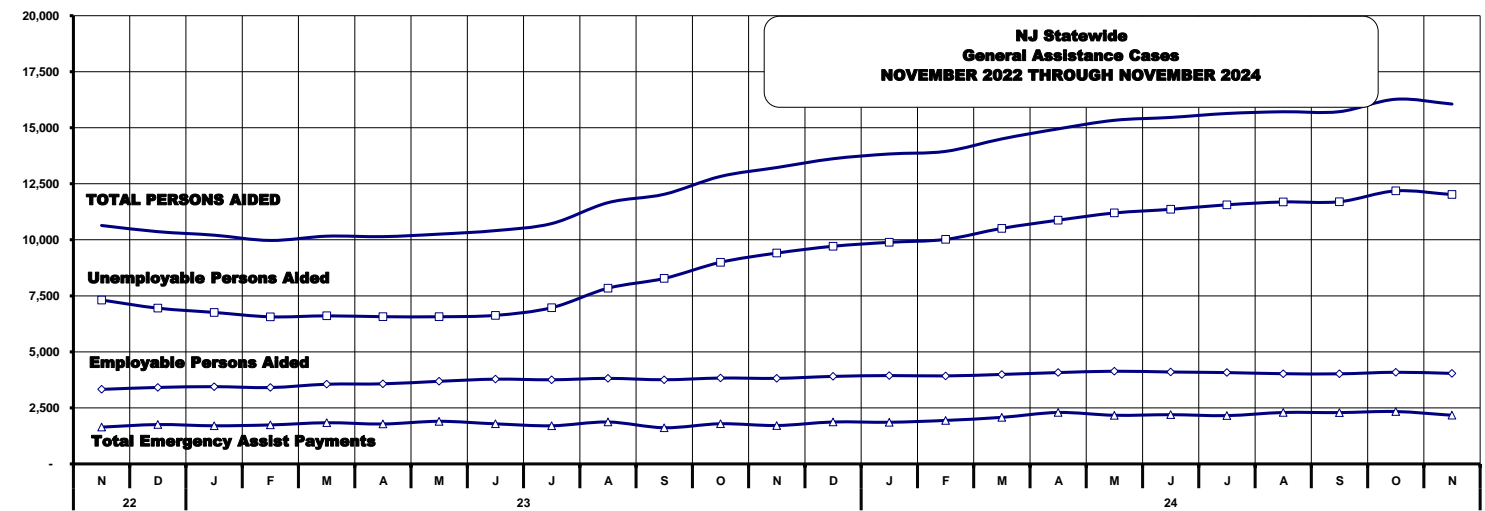


TABLE 10:
GENERAL
ASSISTANCE
PROGRAM

NUMBER OF EMPLOYABLE AND UNEMPLOYABLE RECIPIENTS
AND EMERGENCY ASSISTANCE PAYMENTS - STATEWIDE
NOVEMBER 2022 THROUGH NOVEMBER 2024

PROGRAM	Total Cases						Emergency Assistance Cases			
	Employable	% Chng (1 Yr)	Unemployable	% Chng (1 Yr)	Total	% Chng (1 Yr)	Temporary Rental Assistance	Other GA-EA	Total	% Chng (1 Yr)
2022 NOV	7,313	-24.4%	3,326	-13.7%	10,639	-21.3%	602	1,040	1,642	-4.6%
2022 DEC	6,950	-30.8%	3,413	-11.5%	10,363	-25.4%	599	1,157	1,756	-3.1%
2022 AVERAGE	10,103		3,619		13,722		688	1,192	1,880	
2023 JAN	6,760	-34.0%	3,447	-9.3%	10,207	-27.3%	590	1,112	1,702	4.8%
FEB	6,563	-38.6%	3,408	-10.6%	9,971	-31.2%	570	1,170	1,740	-6.1%
MAR	6,607	-42.4%	3,555	-8.1%	10,162	-33.7%	586	1,251	1,837	-10.8%
APR	6,569	-44.4%	3,573	-6.5%	10,142	-35.1%	623	1,158	1,781	-8.1%
MAY	6,567	-45.5%	3,686	-3.1%	10,253	-35.3%	634	1,267	1,901	-0.1%
JUN	6,629	-46.1%	3,782	-2.0%	10,411	-35.6%	633	1,155	1,788	-12.0%
JUL	6,971	-44.0%	3,754	-2.8%	10,725	-34.3%	605	1,097	1,702	-12.9%
AUG	7,840	-19.9%	3,817	14.2%	11,657	-11.2%	602	1,268	1,870	-10.4%
SEP	8,277	-1.1%	3,755	16.4%	12,032	3.8%	610	1,005	1,615	-14.8%
OCT	8,997	14.9%	3,831	16.4%	12,828	15.4%	583	1,209	1,792	1.9%
NOV	9,407	28.6%	3,818	14.8%	13,225	24.3%	600	1,114	1,714	4.4%
2023 AVERAGE	9,712	39.7%	3,905	14.4%	13,617	31.4%	598	1,272	1,870	6.5%
2024 JAN	7,575		3,694		11,269		603	1,173	1,776	
2024 FEB	9,888	46.3%	3,942	14.4%	13,830	35.5%	612	1,247	1,859	9.2%
MAR	10,019	52.7%	3,927	15.2%	13,946	39.9%	513	1,428	1,941	11.6%
APR	10,510	59.1%	3,993	12.3%	14,503	42.7%	629	1,449	2,078	10.0%
MAY	10,875	65.6%	4,075	14.0%	14,950	47.4%	659	1,636	2,295	28.9%
JUN	11,197	70.5%	4,136	12.2%	15,333	49.5%	680	1,490	2,170	14.2%
JUL	11,360	71.4%	4,101	8.4%	15,461	48.5%	696	1,501	2,197	22.9%
AUG	11,562	65.9%	4,075	8.6%	15,637	45.8%	662	1,494	2,156	26.7%
SEP	11,689	49.1%	4,025	5.4%	15,714	34.8%	749	1,545	2,294	22.7%
OCT	11,699	41.3%	4,019	7.0%	15,718	30.6%	761	1,529	2,290	41.8%
NOV	12,182	35.4%	4,090	6.8%	16,272	26.8%	766	1,571	2,337	30.4%
2024 AVERAGE TO DATE	12,019	27.8%	4,039	5.8%	16,058	21.4%	784	1,387	2,171	26.7%
	11,182		4,038		15,220		683	1,480	2,163	



Source: NJ Division of Family Development, GA Fiscal Unit

TABLE 11:
GENERAL
ASSISTANCE
PROGRAM

EMPLOYABLE AND UNEMPLOYABLE CASES
AND EMERGENCY ASSISTANCE CASES RECEIVING PAYMENTS BY COUNTY
NOVEMBER 2024

	<u>Total Cases</u>						<u>Emergency Assistance Cases</u>			
	Employable	% Chng (1 Yr)	Unemployable	% Chng (1 Yr)	Total	% Chng (1 Yr)	Temporary Rental Assistance	Other GA-EA	Total	% Chng (1 Yr)
ATLANTIC	1,034	7.5%	162	0.0%	1,196	6.4%	95	55	150	2.0%
BERGEN	348	2.7%	218	-12.4%	566	-3.7% *	68	22	90	23.3%
BURLINGTON	467	37.0%	204	10.9%	671	27.8%	9	181	190	82.7%
CAMDEN	1,749	18.7%	531	17.5%	2,280	18.4%	33	97	130	51.2%
CAPE MAY	197	49.2%	54	25.6%	251	43.4%	12	75	87	20.8%
CUMBERLAND	435	27.6%	198	5.3%	633	19.7%	3	21	24	41.2%
ESSEX	1,293	32.3%	258	4.9%	1,551	26.8%	40	76	116	-5.7% *
GLOUCESTER	298	77.4%	130	6.6%	428	47.6% Δ	6	41	47	193.8% Δ
HUDSON	1,766	44.2%	299	-7.7%	2,065	33.3%	175	95	270	64.6%
HUNTERDON	42	-51.2%	52	-1.9%	94	-32.4% *	3	8	11	-63.3% *
MERCER	652	37.3%	278	12.6%	930	28.8%	44	69	113	20.2%
MIDDLESEX	481	61.4%	333	-1.5%	814	28.0%	59	47	106	6.0%
MONMOUTH	362	25.7%	238	9.7%	600	18.8%	2	121	123	57.7%
MORRIS	262	37.9%	164	0.0%	426	20.3%	40	56	96	35.2%
OCEAN	365	-4.5%	209	-4.6%	574	-4.5% *	15	71	86	6.2%
PASSAIC	824	63.5%	199	28.4%	1,023	55.2% Δ	81	63	144	171.7% Δ
SALEM	187	74.8%	61	7.0%	248	51.2% Δ	5	2	7	133.3%
SOMERSET	359	30.5%	90	3.4%	449	24.0%	44	116	160	6.7%
SUSSEX	26	8.3%	26	0.0%	52	4.0%	0	12	12	500.0% Δ
UNION	783	5.8%	267	22.5%	1,050	9.6%	39	136	175	-19.7% *
WARREN	89	11.3%	68	1.5%	157	6.8%	11	23	34	6.3%
NJ TOTAL	12,019	27.8%	4,039	5.8%	16,058	21.4%	784	1,387	2,171	26.7%

Δ= ↑ Caseload %

* = ↓ Caseload %

TABLE 12:
OFFICE OF
CHILD SUPPORT
SERVICES

OFFICE OF CHILD SUPPORT SERVICES
QUARTERLY PERFORMANCE REPORT
STATE SUMMARY
TITLE IV-D SOURCE COLLECTION REPORT

Comparison of Quarter-4 (FFY 2023 vs. FFY 2024)

COLLECTION SOURCE	TOTAL 7/1/2023 - 9/30/2023	% OF TOTAL COLLECTIONS	TOTAL 7/1/2024 - 9/30/2024	% OF TOTAL COLLECTIONS	DOLLAR CHANGE	% CHANGE
FEDERAL TAX	\$3,138,677	1.21%	\$1,939,333	0.75%	\$ (1,199,344)	-38.21%
STATE TAX	\$3,219,478	1.24%	\$2,455,684	0.95%	\$ (763,794)	-23.72%
UIB	\$5,696,616	2.19%	\$6,573,650	2.55%	\$ 877,034	15.40%
INC WITHHOLD	\$180,225,466	69.39%	\$179,838,027	69.70%	\$ (387,439)	-0.21%
FROM OTHER STATES	\$9,955,295	3.83%	\$9,660,970	3.74%	\$ (294,325)	-2.96%
ADMIN ENFORCEMENT	\$5,067,440	1.95%	\$5,169,927	0.02%	\$ 102,487	2.02%
OTHER	\$52,443,192	20.19%	\$52,366,242	20.30%	\$ (76,950)	-0.15%
TOTAL COLLECTIONS*	\$259,746,164	100%	\$258,003,833	100%	\$ (1,742,331)	-0.67%
DISBURSED COLLECTIONS**	\$225,398,220		\$221,823,418		\$ (3,574,802)	-1.59%

* Includes collections on both current support and arrears.

** Includes collections on both current support and arrears; also includes money sent to other states.

SOURCE: NJKiDS (Based on Federal Quarterly Report of Collections - OCSE-34A except Disbursed Collections)

Disbursed Collections obtained from Federal Data Report - OCSE-157, which is reported annually to Congress and used in the calculation of incentive dollars earned by each state.

TABLE 13:
OFFICE OF
CHILD SUPPORT
SERVICES

OFFICE OF CHILD SUPPORT SERVICES
STATE SUMMARY
TITLE IV-D PATERNITY ESTABLISHMENT REPORT
Comparison of November (FFY 2024 vs. FFY 2025)

County	NOVEMBER 2023			NOVEMBER 2024			Increase or Decrease (-) from FFY 2024 to FFY 2025
	Total Children Born Out of Wedlock*	Number of Paternities Established	Percent of Paternities Established	Total Children Born Out of Wedlock*	Number of Paternities Established	Percent of Paternities Established	
Atlantic	4,644	4,630	99.7%	4,184	4,180	99.9%	0.2%
Bergen	2,357	2,319	98.4%	2,168	2,128	98.2%	-0.2%
Burlington	3,489	3,407	97.6%	3,182	3,112	97.8%	0.2%
Camden	11,756	11,549	98.2%	10,847	10,602	97.7%	-0.5%
Cape May	829	833	100.5%	744	744	100.0%	-0.5%
Cumberland	5,125	5,082	99.2%	4,708	4,685	99.5%	0.4%
Essex	17,783	17,011	95.7%	16,284	15,588	95.7%	0.1%
Gloucester	3,113	3,094	99.4%	2,846	2,816	98.9%	-0.4%
Hudson	7,246	7,026	97.0%	6,619	6,467	97.7%	0.7%
Hunterdon	153	152	99.3%	119	119	100.0%	0.7%
Mercer	4,752	4,619	97.2%	4,342	4,236	97.6%	0.4%
Middlesex	4,613	4,512	97.8%	4,188	4,084	97.5%	-0.3%
Monmouth	3,260	3,192	97.9%	2,952	2,881	97.6%	-0.3%
Morris	815	812	99.6%	721	707	98.1%	-1.6%
Ocean	3,588	3,513	97.9%	3,221	3,162	98.2%	0.3%
Passaic	7,029	6,909	98.3%	6,294	6,156	97.8%	-0.5%
Salem	2,260	2,167	95.9%	2,198	2,105	95.8%	-0.1%
Somerset	935	917	98.1%	779	765	98.2%	0.1%
Sussex	376	379	100.8%	353	353	100.0%	-0.8%
Union	8,199	7,901	96.4%	7,818	7,486	95.8%	-0.6%
Warren	529	533	100.8%	429	428	99.8%	-1.0%
NJ TOTALS	92,851	90,557	97.5%	84,996	82,804	97.4%	-0.1%

SOURCE: NJKiDS (Based on Federal Performance Measures - OCSE-157)

* Information on Out of Wedlock Births obtained from NJ Bureau of Vital Statistics

TABLE 14:
OFFICE OF
CHILD SUPPORT
SERVICES

OFFICE OF CHILD SUPPORT SERVICES
STATE SUMMARY
TITLE IV-D REPORT OF CASES WITH ORDERS
Comparison of November (FFY 2024 vs. FFY 2025)

County	NOVEMBER 2023			NOVEMBER 2024			Increase or Decrease (-) from FFY 2024 to FFY 2025
	Total Cases	Cases with Orders	% of Cases with Orders	Total Cases	Cases with Orders	% of Cases with Orders	
Atlantic	9,357	8,582	91.7%	8,860	8,151	92.0%	0.3%
Bergen	9,637	9,299	96.5%	9,351	9,073	97.0%	0.5%
Burlington	10,748	9,721	90.4%	10,467	9,377	89.6%	-0.9%
Camden	23,405	21,698	92.7%	22,446	20,878	93.0%	0.3%
Cape May	2,318	2,219	95.7%	2,240	2,116	94.5%	-1.3%
Cumberland	9,909	9,335	94.2%	9,397	8,904	94.8%	0.5%
Essex	32,575	28,209	86.6%	32,033	27,111	84.6%	-2.0%
Gloucester	8,222	7,861	95.6%	7,881	7,449	94.5%	-1.1%
Hudson	16,460	14,532	88.3%	16,026	14,175	88.5%	0.2%
Hunterdon	1,050	992	94.5%	990	950	96.0%	1.5%
Mercer	10,669	9,535	89.4%	10,338	9,152	88.5%	-0.8%
Middlesex	14,313	13,065	91.3%	13,811	12,620	91.4%	0.1%
Monmouth	9,969	9,381	94.1%	9,442	8,823	93.4%	-0.7%
Morris	4,572	4,429	96.9%	4,434	4,287	96.7%	-0.2%
Ocean	11,544	11,051	95.7%	11,003	10,529	95.7%	0.0%
Passaic	15,474	13,598	87.9%	14,497	13,056	90.1%	2.2%
Salem	3,442	3,252	94.5%	3,345	3,117	93.2%	-1.3%
Somerset	3,673	3,307	90.0%	3,430	3,107	90.6%	0.5%
Sussex	2,191	2,154	98.3%	2,118	2,069	97.7%	-0.6%
Union	14,983	14,162	94.5%	14,515	13,734	94.6%	0.1%
Warren	2,085	1,981	95.0%	1,912	1,840	96.2%	1.2%
NJ TOTALS	216,596	198,363	91.6%	208,536	190,518	91.4%	-0.2%

SOURCE: NJKiDS (Based on Federal Performance Measures - OCSE-157)

TABLE 15:
OFFICE OF
CHILD SUPPORT
SERVICES

OFFICE OF CHILD SUPPORT SERVICES
STATE SUMMARY
TITLE IV-D COLLECTIONS ON CURRENT SUPPORT
Comparison of November (FFY 2024 vs. FFY 2025)

County	NOVEMBER 2023			NOVEMBER 2024			Increase or Decrease (-) from FFY 2024 to FFY 2025
	Total Current Support Due	Total Current Support Distributed	Total Collection Rate	Total Current Support Due	Total Current Support Distributed	Total Collection Rate	
Atlantic	\$3,360,517	\$2,120,270	63.1%	\$3,172,076	\$1,999,438	63.0%	-0.1%
Bergen	\$7,020,144	\$5,135,064	73.1%	\$6,730,420	\$4,902,273	72.8%	-0.3%
Burlington	\$4,841,628	\$3,311,842	68.4%	\$4,618,200	\$3,157,119	68.4%	0.0%
Camden	\$7,027,581	\$4,107,378	58.4%	\$6,667,724	\$3,895,285	58.4%	0.0%
Cape May	\$904,888	\$613,469	67.8%	\$863,643	\$580,261	67.2%	-0.6%
Cumberland	\$2,742,747	\$1,583,882	57.7%	\$2,553,849	\$1,493,954	58.5%	0.8%
Essex	\$9,447,743	\$5,475,078	58.0%	\$9,043,137	\$5,284,650	58.4%	0.5%
Gloucester	\$3,534,730	\$2,312,393	65.4%	\$3,322,164	\$2,198,796	66.2%	0.8%
Hudson	\$6,546,005	\$4,137,281	63.2%	\$6,303,569	\$3,971,266	63.0%	-0.2%
Hunterdon	\$894,848	\$753,529	84.2%	\$865,074	\$705,083	81.5%	-2.7%
Mercer	\$3,645,970	\$2,292,985	62.9%	\$3,551,943	\$2,214,339	62.3%	-0.5%
Middlesex	\$6,652,222	\$4,520,589	68.0%	\$6,321,904	\$4,298,364	68.0%	0.0%
Monmouth	\$5,522,949	\$3,997,297	72.4%	\$5,182,516	\$3,699,028	71.4%	-1.0%
Morris	\$3,608,249	\$2,611,901	72.4%	\$3,437,100	\$2,442,152	71.1%	-1.3%
Ocean	\$5,589,135	\$3,828,136	68.5%	\$5,337,694	\$3,625,300	67.9%	-0.6%
Passaic	\$5,684,015	\$3,494,362	61.5%	\$5,479,389	\$3,404,783	62.1%	0.7%
Salem	\$986,236	\$582,299	59.0%	\$953,590	\$564,737	59.2%	0.2%
Somerset	\$2,315,873	\$1,842,413	79.6%	\$2,223,336	\$1,773,961	79.8%	0.2%
Sussex	\$1,449,339	\$1,077,655	74.4%	\$1,363,650	\$1,021,751	74.9%	0.6%
Union	\$6,349,822	\$4,112,062	64.8%	\$6,068,979	\$3,982,260	65.6%	0.9%
Warren	\$1,052,718	\$786,479	74.7%	\$992,499	\$785,033	79.1%	4.4%
NJ TOTALS	\$89,177,359	\$58,696,366	65.8%	\$85,052,453	\$55,999,833	65.8%	0.0%

SOURCE: NJKiDS (Based on Federal Performance Measures - OCSE-157)

TABLE 16:
OFFICE OF
CHILD SUPPORT
SERVICES

OFFICE OF CHILD SUPPORT SERVICES
STATE SUMMARY
TITLE IV-D CASES ARREARS COLLECTION REPORT
Comparison of November (FFY 2024 vs. FFY 2025)

County	NOVEMBER 2023			NOVEMBER 2024			Increase or Decrease (-) from FFY 2024 to FFY 2025
	Total Cases with Arrears	Total Amount Collected	Average Arrears Collection per Case	Total Cases with Arrears	Total Amount Collected	Average Arrears Collection per Case	
Atlantic	5,800	\$539,742	\$93.06	5,512	\$444,818	\$80.70	-\$12.36
Bergen	6,208	\$937,318	\$150.99	6,082	\$973,260	\$160.02	\$9.04
Burlington	6,529	\$823,072	\$126.06	6,318	\$822,155	\$130.13	\$4.06
Camden	13,236	\$1,292,639	\$97.66	12,833	\$1,112,910	\$86.72	-\$10.94
Cape May	1,516	\$164,204	\$108.31	1,467	\$138,993	\$94.75	-\$13.57
Cumberland	5,820	\$442,849	\$76.09	5,600	\$444,816	\$79.43	\$3.34
Essex	17,266	\$1,986,038	\$115.03	16,499	\$1,846,419	\$111.91	-\$3.11
Gloucester	5,257	\$623,714	\$118.64	4,969	\$565,173	\$113.74	-\$4.90
Hudson	9,956	\$980,985	\$98.53	9,628	\$1,162,854	\$120.78	\$22.25
Hunterdon	633	\$105,436	\$166.57	599	\$108,591	\$181.29	\$14.72
Mercer	6,558	\$729,604	\$111.25	6,287	\$814,626	\$129.57	\$18.32
Middlesex	8,780	\$1,102,950	\$125.62	8,518	\$1,039,518	\$122.04	-\$3.58
Monmouth	6,184	\$986,818	\$159.58	5,850	\$789,818	\$135.01	-\$24.56
Morris	3,024	\$552,842	\$182.82	2,933	\$568,120	\$193.70	\$10.88
Ocean	7,048	\$848,200	\$120.35	6,790	\$847,952	\$124.88	\$4.54
Passaic	9,230	\$1,089,155	\$118.00	8,872	\$1,157,096	\$130.42	\$12.42
Salem	1,955	\$156,867	\$80.24	1,870	\$239,675	\$128.17	\$47.93
Somerset	2,223	\$318,989	\$143.49	2,080	\$294,360	\$141.52	-\$1.98
Sussex	1,338	\$257,769	\$192.65	1,311	\$263,419	\$200.93	\$8.28
Union	9,263	\$1,120,891	\$121.01	9,012	\$1,056,534	\$117.24	-\$3.77
Warren	1,330	\$154,032	\$115.81	1,230	\$140,831	\$114.50	-\$1.32
NJ TOTALS	129,154	\$15,214,114	\$117.80	124,260	\$14,831,938	\$119.36	\$1.56

SOURCE: OCSE-157 Child Support Enforcement Annual Data Report

Table 17
WFNJ**WORK FIRST NEW JERSEY STATISTICAL SUMMARY****NOVEMBER 2024**

COUNTY	EMPLOYMENT DIRECTED ACTIVITIES			EMPLOYED OPEN (WFNJ RECIPIENT)	SUPPORT SERVICES ON ACTIVE CASE		CLOSED FOR EMPLOYMENT THIS MONTH	POST ASSISTANCE CHILD CARE
	CWEP	ALL OTHER TRAINING	JOB SEARCH		CHILD CARE	TRAINING REL. EXPENSES		
ATLANTIC	26	44	0	15	21	57	7	17
BERGEN	22	1	97	2	52	5	6	6
BURLINGTON	138	7	76	25	32	20	2	7
CAMDEN	36	181	79	67	107	8	19	6
CAPE MAY	2	6	8	1	2	7	1	4
CUMBERLAND	0	47	47	24	24	55	4	3
ESSEX	133	208	16	128	114	205	39	74
GLOUCESTER	4	0	5	28	9	10	7	16
HUDSON	23	290	64	105	223	84	36	22
HUNTERDON	3	0	14	0	3	0	0	1
MERCER	96	203	9	68	123	23	17	47
MIDDLESEX	0	35	63	34	63	0	9	0
MONMOUTH	10	11	26	19	27	5	2	21
MORRIS	1	10	6	7	3	1	1	0
OCEAN	0	191	0	6	15	16	3	11
PASSAIC	122	101	0	32	92	70	11	3
SALEM	0	16	2	6	8	8	3	3
SOMERSET	85	32	24	17	43	43	2	0
SUSSEX	1	0	0	3	0	0	1	1
UNION	135	28	0	40	48	60	13	0
WARREN	0	10	0	3	3	0	0	0
STATE TOTAL	837	1,421	536	630	1,012	677	183	242

Data is derived from NJ Division of Family Development's FAMIS Reports RM064-01 & RM703-51, AdHoc Reports 5549 & 5598 and SDW Report WR00022WZ_CC

**DIVISION OF FAMILY DEVELOPMENT CURRENT PROGRAM STATISTICS
NOVEMBER 2024**

ACRONYMS

EMERGENCY ASSISTANCE (EA) - Payments to those eligible for WFNJ/TANF or WFNJ/GA, authorized during the 30 consecutive days immediately following the emergency (defined as a substantial loss of shelter, food, clothing, or household furnishings by fire, flood or other similar disaster) or if eligible individual or family is in an imminent or actual state of homelessness.

NJ SNAP - Formerly the Food Stamp Program, now known as NJ SNAP (NJ Supplemental Nutrition Assistance Program) authorized by Congress as a nutritional supplement program to provide low income households with more food of greater variety and better nutrition. Program eligibility is based on household income, resources, and expenses for medical, shelter, and dependent care. CWA staff refers certain recipients to the New Jersey Department of Labor for participation in the Food Stamp Employment and Training Program.

FAMIS: Family Assistance Management Information System

GAAS: General Assistance Automated System

NJKIDS: New Jersey Kids Deserve Support (Child Support Information Management System)

NJ MMIS SHARED DATA WAREHOUSE: The Shared Data Warehouse (SDW) is the repository for New Jersey's DFD and Medicaid data. Since 2003, OptumInsight has administered the SDW and provided access to the data through a reporting tool known as Business Objects.

OMEGA: Online Management of Economic Goal Achievement

SSI-EA: Supplemental Security Income-Emergency Assistance

WFNJ: Work First New Jersey - Fully implemented July 1, 1997, this is New Jersey's welfare reform program which responds to the requirements of the Federal Personal Responsibility and Work Opportunity Reconciliation Act (**PRWORA**) of 1996. PRWORA established Temporary Assistance for Needy Families (**TANF**) as the replacement for AFDC cash assistance. WFNJ includes two segments, **WFNJ/TANF** for families with children, and **WFNJ/GA** (General Assistance) for single adults and couples without dependent children. WFNJ emphasizes achieving self-sufficiency and limits lifetime receipt of financial assistance to a total of five years.

**DIVISION OF FAMILY DEVELOPMENT CURRENT PROGRAM STATISTICS
NOVEMBER 2024**

EXPLANATORY NOTES

The Department of Human Services Division of Family Development provides basic income and an opportunity to achieve self-sufficiency for individuals and families served by the Division's programs. The Division provides leadership, direction and supervision to those public agencies responsible for administering those programs and plans for and develops policies to promote self-sufficiency.

WFNJ STATISTICAL SUMMARY (TABLE 17)

Employment Directed Activities (EDA) - From Activities Summary Report (OMEGA report # RM064). Unduplicated count of persons participating in Community Work Experience Program (CWEP), All Other Training, or Job Search.

Number of Persons Employed This Month, Still Receiving TANF - Individuals with open "empl" activity on OMEGA. Ad hoc report.

Participants Receiving Child Care Services - From Issuance Disbursement Summary (OMEGA report # RM703). Total number of active participants who show receipt of Child Care.

Number of Persons Closed on FAMIS Due to Employment - From FAMIS report #5549-RM-2

Post TANF and Receiving Child Care - Persons no longer in receipt of TANF but still receiving child care. From Share Data Warehouse Child Care case count based on Child Care payments (SDW report WR00022WZ_CC).