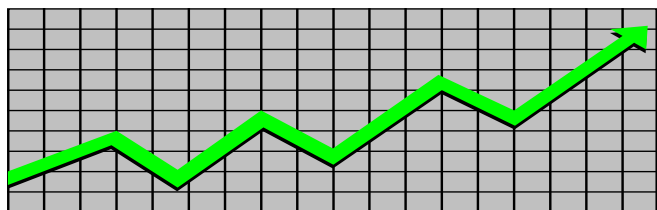


State of New Jersey
Department of Human Services
Division of Family Development

CURRENT PROGRAM STATISTICS



April 2025

Natasha Johnson, Assistant Commissioner

TABLE OF CONTENTS

HIGHLIGHTS:

WFNJ/TANF	ii
NJ SNAP	ii
EMERGENCY ASSISTANCE	ii
GENERAL ASSISTANCE	iii
GA Emergency Assistance.....	iii
GA Program.....	iii
CHILD SUPPORT SERVICES	iii
WORK FIRST NEW JERSEY (WFNJ)	iii
STATISTICS- BY STATE & COUNTY	1
Table 1: WFNJ/TANF Families & Persons (NJ Statewide) April 2023 to 2025.....	1
Table 2: WFNJ/TANF Families (by County)- April 2025.....	2
Table 2B: WFNJ/TANF Persons, Adults, & Children (by County)- April 2025.....	3
Table 3: TANF Work Participation Rates Over 12 Month Period (by County)- April 2025.....	4
Table 4: TANF Work Participation Rates Over 12 Month Period (NJ Statewide)- April 2025.....	5
Table 5: NJ SNAP Households/Persons (NJ Statewide) April 2023 to 2025.....	6
Table 6: NJ SNAP Recipient Trends (NJ Statewide) April 2023 to 2025.....	7
Table 7: NJ SNAP Households/Persons (by County)- April 2025.....	8
Table 8: Emergency Assistance Program (NJ Statewide) April 2023 to 2025.....	9
Table 9: Emergency Assistance Program (by County)- April 2025.....	10
Table 10: General Assistance Program (NJ Statewide) April 2023 to 2025.....	11
Table 11: General Assistance Program (by County)- April 2025.....	12
Table 12: Child Support Services Distributions (NJ Statewide) FFY 2025.....	13
Table 13: Child Support Services Paternities Established- April 2025.....	14
Table 14: Child Support Services Cases With Orders- April 2025.....	15
Table 15: Child Support Services Collections On Current Support- April 2025.....	16
Table 16: Child Support Services Cases With Payments On Arrears- April 2025.....	17
Table 17: WFNJ Statistical Summary- April 2025.....	18
ACRONYMS	19
EXPLANATORY NOTES	20
WFNJ Statistical Summary (Table 17).....	20

DIVISION OF FAMILY DEVELOPMENT CURRENT PROGRAM STATISTICS

APRIL 2025

Each month the Division of Family Development publishes its program statistics for: WFNJ/TANF, NJ SNAP, Emergency Assistance, General Assistance, and Child Support Services. When possible, information is provided separately for children and adults. Many tables also provide trend data with information broken down by county for readers to consider. This report is compiled and prepared by The Bureau of Research & Reporting.

WFNJ/TANF

- As of the end of April, the TANF caseload had decreased by 1455 cases, from 11,747 in April 2024 to 10,292 in April 2025; a decrease of -12.4%.
- The counties with caseloads that increased the most since April 2024 were Gloucester (5.3%), Cape May (3.7%), and Warren (2.7%).
- The counties with caseloads that decreased the most since April 2024 were Hunterdon (-27.5%), Essex (-26.6%), and Union (-26.2%).
- Of the WFNJ/TANF cases, 2,133 or 20.7% were child-only in April 2025.
- The counties with the most child-only cases were Camden (329), Hudson (292), and Essex (202).
- Hudson (4,982), Camden (3,605), and Essex (3,495) counties had the greatest number of persons receiving TANF in April 2025.

NJ SNAP (Formerly FOOD STAMPS)

- In April 2025, there were 433,104 households receiving NJ SNAP benefits. The number of NJ SNAP households decreased by 5,123 or -1.2%, since April 2024.
- There were 806,240 persons receiving NJ SNAP benefits as of April 2025; a decrease of 23,141 or -2.8% since April 2024.
- The counties having the highest SNAP caseload increase since April 2024 were Gloucester (8.2%), Burlington (7.6%), and Morris (6.9%).
- The counties having the highest SNAP caseload decrease since April 2024 were Union (-8.1%), Essex (-6.7%), and Camden (-4.3%).

EMERGENCY ASSISTANCE

- There were 1,769 TANF families receiving Emergency Assistance (EA) in April 2025; a decrease of 1 or -0.1% since April 2024.
- In April 2025, EA payments were made for 703 SSI recipients.

DIVISION OF FAMILY DEVELOPMENT CURRENT PROGRAM STATISTICS

APRIL 2025

- There were 2,896 GA cases with Emergency Assistance payments in April 2025; an increase of 601 or 26.2% since April 2024.
- The counties that showed the highest percent increase in Emergency Assistance payments were Ocean (100%), Sussex (100%), and Gloucester (75.9%).
- The counties that showed the highest percent decrease in Emergency Assistance payments were Hunterdon (-40%), Cape May (-17%), and Monmouth (-12.1%).

GENERAL ASSISTANCE

- The total numbers of cases receiving GA has increased from 14,950 to 18,191 since April 2024; an increase of 21.7%.
- There were 13,957 Employable GA and 4,234 Unemployable GA cases in April 2025.
- The counties that showed a percent increase for GA cases were Gloucester (55.4%), Burlington (40.7%), and Cumberland (39.4%) since April 2024.
- The counties that showed the highest percent decrease for GA cases since April 2024 were Sussex (-17.9%) and Hunterdon (-8.8%).
- In April 2025, GA cases showed a 1.83% increase since March 2025.

CHILD SUPPORT SERVICES (QUARTERLY REPORT)

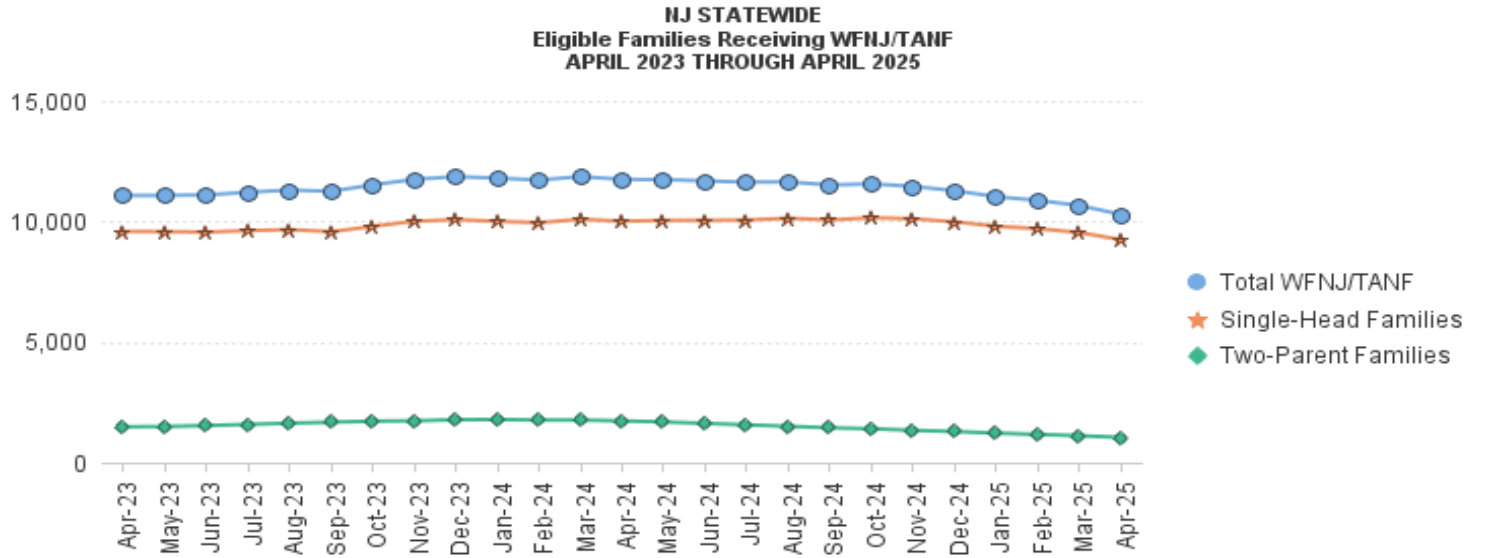
- The total collection for the Child Support Services Program was about \$265 million from January 2025 to March 2025; an increase of 0.47% over the same period from FFY 2024.
- Total distributions decreased -1.2% from March 2024.

WORK FIRST NEW JERSEY (WFNJ)

- During the report month of April 2025, there were 545 families in which at least one member was employed and an additional 179 families whose WFNJ assistance cases were closed due to employment - related earnings.
- The three counties with the greatest number of employed active WFNJ recipients were: Hudson (105), Essex (98), and Camden (58).
- There were 229 former TANF cases receiving post-TANF support in the form of child care assistance.

TABLE 1: WFNJ/TANF PROGRAM

STATEWIDE NUMBER OF APPLICATIONS AND TERMINATIONS DURING APRIL 2025												
NUMBER OF ELIGIBLE FAMILIES & PERSONS RECEIVING WFNJ/TANF FOR APRIL 2025												
APRIL 2023 THROUGH APRIL 2025												
		Cases Added	Cases Closed	Child-Only Cases ‡	Total Single-Head Families	2-Parent Families	Total WFNJ/TANF Families	%CHNG (1 Yr.)	Total Persons	%CHNG (1 Yr.)	Adults	Children
2023	APR	739	858	2,548	9,587	1,490	11,077	5.9%	29,826	7.5%	10,019	19,807
	MAY	825	813	2,523	9,586	1,498	11,084	4.4%	29,863	6.0%	10,059	19,804
	JUN	827	855	2,500	9,562	1,540	11,102	4.0%	29,926	5.8%	10,142	19,784
	JUL	823	764	2,487	9,624	1,590	11,214	2.7%	30,222	4.1%	10,317	19,905
	AUG	887	841	2,445	9,666	1,638	11,304	2.5%	30,533	3.7%	10,497	20,036
	SEP	912	1,097	2,410	9,577	1,677	11,254	2.0%	30,443	3.2%	10,521	19,922
	OCT	944	891	2,463	9,800	1,722	11,522	4.3%	31,139	5.2%	10,781	20,358
	NOV	859	795	2,495	10,011	1,737	11,748	6.1%	31,776	6.4%	10,990	20,786
	DEC	900	836	2,484	10,080	1,781	11,861	6.4%	32,067	6.7%	11,158	20,909
2023	Average	831	844	2,501	9,711	1,576	11,287		30,464		10,362	20,102
2024	JAN	819	879	2,456	10,010	1,790	11,800	7.1%	31,992	7.8%	11,134	20,858
	FEB	743	865	2,451	9,953	1,768	11,721	5.6%	31,775	5.8%	11,038	20,737
	MAR	784	797	2,453	10,095	1,767	11,862	6.4%	32,088	6.7%	11,176	20,912
	APR	832	944	2,414	10,014	1,733	11,747	6.0%	31,674	6.2%	11,066	20,608
	MAY	805	869	2,435	10,047	1,689	11,736	5.9%	31,556	5.7%	10,990	20,566
	JUN	816	920	2,444	10,054	1,631	11,685	5.3%	31,338	4.7%	10,872	20,466
	JUL	802	853	2,383	10,064	1,569	11,633	3.7%	31,312	3.6%	10,819	20,493
	AUG	864	932	2,370	10,138	1,508	11,646	3.0%	31,376	2.8%	10,784	20,592
	SEP	759	890	2,345	10,066	1,448	11,514	2.3%	30,858	1.4%	10,617	20,241
	OCT	894	894	2,352	10,157	1,406	11,563	0.4%	30,962	-0.6%	10,617	20,345
	NOV	797	936	2,336	10,115	1,342	11,457	-2.5%	30,753	-3.2%	10,463	20,290
	DEC	670	849	2,311	9,987	1,290	11,277	-4.9%	30,319	-5.5%	10,256	20,063
2024	Average	799	886	2,396	10,058	1,578	11,637		31,334		10,819	20,514
2025	JAN	732	1,001	2,289	9,802	1,226	11,028	-6.5%	29,582	-7.5%	9,965	19,617
	FEB	731	914	2,258	9,706	1,171	10,877	-7.2%	29,196	-8.1%	9,790	19,406
	MAR	619	872	2,227	9,543	1,120	10,663	-10.1%	28,685	-10.6%	9,556	19,129
	APR	581	1,000	2,133	9,246	1,046	10,292	-12.4%	27,686	-12.6%	9,205	18,481
2025	Average To Date	666	947	2,227	9,574	1,141	10,715		28,787		9,629	19,158



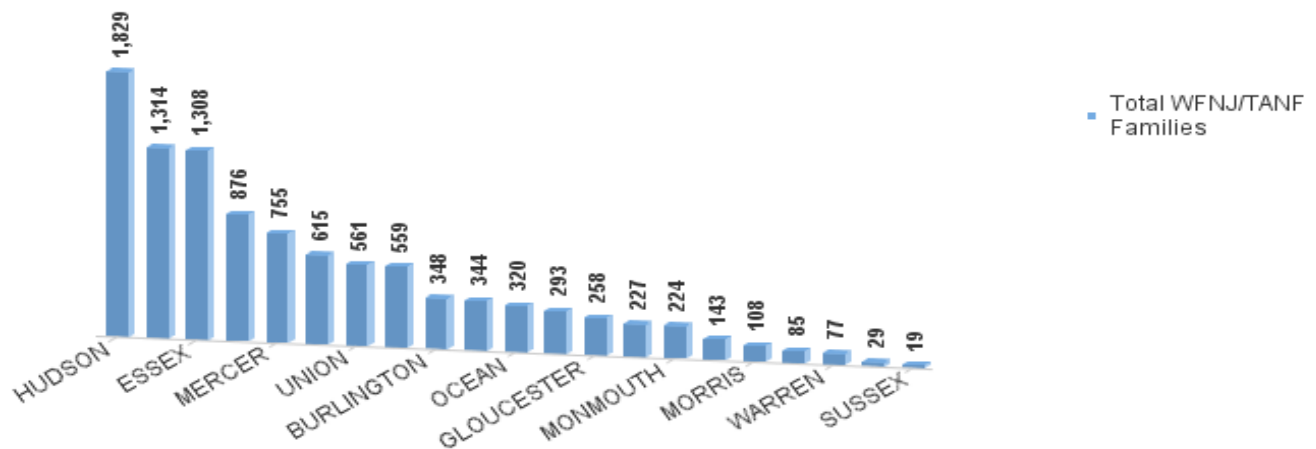
Data is derived from NJ MMIS Shared Data Warehouse Issuance files.
Effective July 2013 this data query source was converted to the SDV

‡ Child-only cases are defined as families in which no eligible adult receives TANF program benefits, yet the family continues to be headed by atleast one of the biological parents, or grandparents, or other appropriate adult.

TABLE 2:
WFNJ/TANF PROGRAM **NUMBER OF APPLICATIONS AND TERMINATIONS BY COUNTY DURING APRIL 2025**
NUMBER OF ELIGIBLE FAMILIES RECEIVING WFNJ/TANF FOR APRIL 2025

County	Cases Added	Cases Closed **	Child-	Total			Total		
			Only Cases ‡	1-Adult Cases	Single-Head Families	2-Parent Families	WFNJ/TANF Families	%CHNG (3 Mon)	%CHNG (1 Yr.)
ATLANTIC	26	37	174	337	511	48	559	-3.0%	-7.8%
BERGEN	24	37	51	203	254	39	293	-6.1%	-22.1%
BURLINGTON	37	29	82	232	314	34	348	-0.9%	-7.4%
CAMDEN	61	147	329	883	1,212	102	1,314	-7.5%	-15.3%
CAPE MAY	5	4	24	53	77	8	85	11.8%	3.7% Δ
CUMBERLAND	23	45	102	214	316	28	344	-7.0%	-3.6%
ESSEX	61	156	202	911	1,113	195	1,308	-11.3%	-26.6% *
GLOUCESTER	14	25	67	171	238	20	258	-7.5%	5.3% Δ
HUDSON	101	168	292	1,338	1,630	199	1,829	-5.3%	-6.2%
HUNTERDON	4	2	4	21	25	4	29	20.8%	-27.5% *
MERCER	34	69	164	535	699	56	755	-5.7%	-15.9%
MIDDLESEX	34	42	170	401	571	44	615	-0.2%	-1.1%
MONMOUTH	19	28	45	166	211	13	224	0.0%	-11.5%
MORRIS	10	16	22	66	88	20	108	-1.8%	-11.5%
OCEAN	20	30	50	241	291	29	320	-5.9%	-8.0%
PASSAIC	39	56	172	629	801	75	876	-1.8%	-2.0%
SALEM	12	25	31	104	135	8	143	-8.9%	-7.7%
SOMERSET	17	16	51	155	206	21	227	3.2%	-1.7%
SUSSEX	1	3	5	12	17	2	19	0.0%	-24.0%
UNION	31	58	83	380	463	98	561	-6.7%	-26.2% *
WARREN	8	7	13	61	74	3	77	-6.1%	2.7% Δ
NJ Total	581	1,000	2,133	7,113	9,246	1,046	10,292	-5.4%	-12.4%

Total WFNJ/TANF Families
APRIL 2025
By County



Data is derived from NJ MMIS Shared Data Warehouse Issuance files.
Effective July 2013 this data query source was converted to the SDW

‡ Child-only cases are defined as families in which no eligible adult receives TANF program benefits, yet the family continues to be headed by at least one of the biological parents, or grandparents, or other appropriate adult

** 'Cases closed' include cases that received a benefit in the prior month, but did not receive any TANF benefit for the report month.

Δ=higher caseload % change

*=lower caseload % change

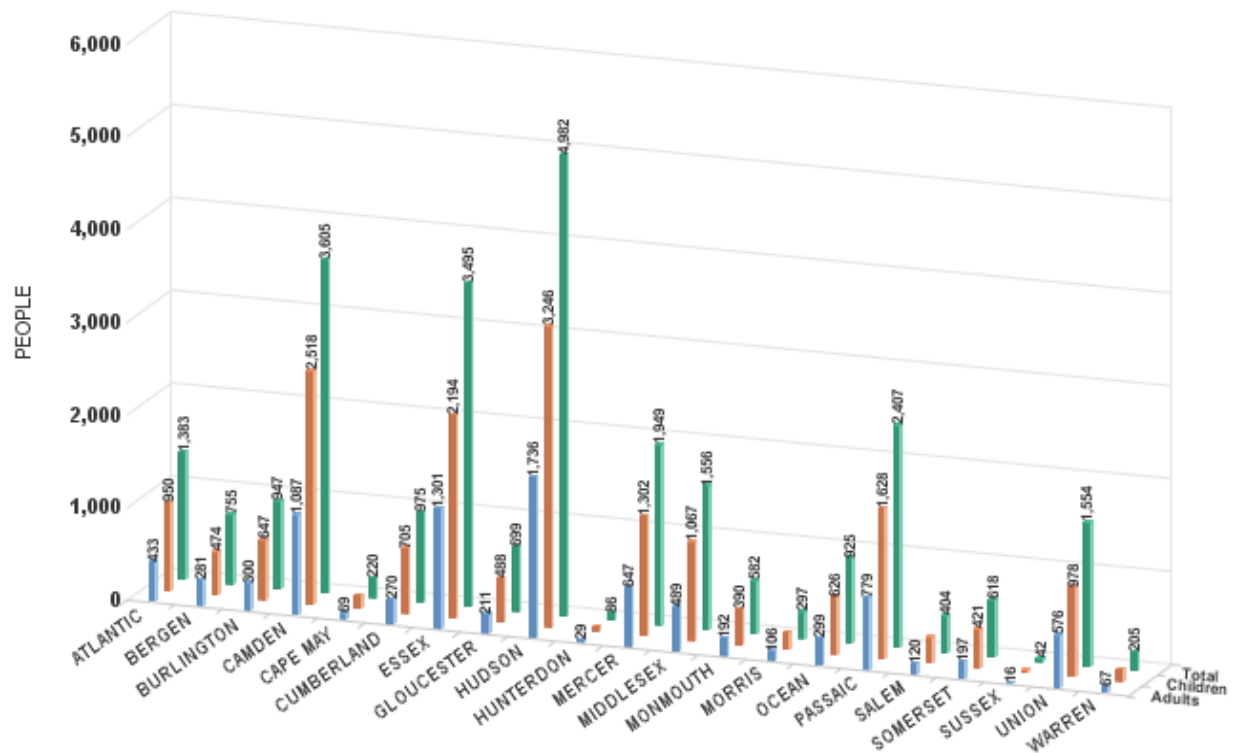
TABLE 2B :

WFNJ/TANF
PROGRAMNUMBER OF PARTICIPATING PERSONS, ADULTS, AND CHILDREN
BY COUNTY FOR APRIL 2025**PERSONS**

County	Adults	Children	Child/Adult Ratio	Total Persons	% Chng (1 Yr)	Persons Per Case
ATLANTIC	433	950	2.19	1,383	-10.5%	2.47
BERGEN	281	474	1.69	755	-22.4%	2.58
BURLINGTON	300	647	2.16	947	-7.0%	2.72
CAMDEN	1,087	2,518	2.32	3,605	-14.2%	2.74
CAPE MAY	69	151	2.19	220	0.5% Δ	2.59
CUMBERLAND	270	705	2.61	975	-1.6%	2.83
ESSEX	1,301	2,194	1.69	3,495	-28.9% *	2.67
GLOUCESTER	211	488	2.31	699	9.4% Δ	2.71
HUDSON	1,736	3,246	1.87	4,982	-3.6%	2.72
HUNTERDON	29	57	1.97	86	-26.5% *	2.97
MERCER	647	1,302	2.01	1,949	-18.4%	2.58
MIDDLESEX	489	1,067	2.18	1,556	-3.9%	2.53
MONMOUTH	192	390	2.03	582	-15.0%	2.60
MORRIS	106	191	1.80	297	-11.9%	2.75
OCEAN	299	626	2.09	925	-7.4%	2.89
PASSAIC	779	1,628	2.09	2,407	-2.4%	2.75
SALEM	120	284	2.37	404	-11.0%	2.83
SOMERSET	197	421	2.14	618	1.6% Δ	2.72
SUSSEX	16	26	1.63	42	-33.3% *	2.21
UNION	576	978	1.70	1,554	-24.3%	2.77
WARREN	67	138	2.06	205	-1.9%	2.66
NJ Total	9,205	18,481	2.007713199	27,686	-12.6%	2.69

Δ=higher caseload % change

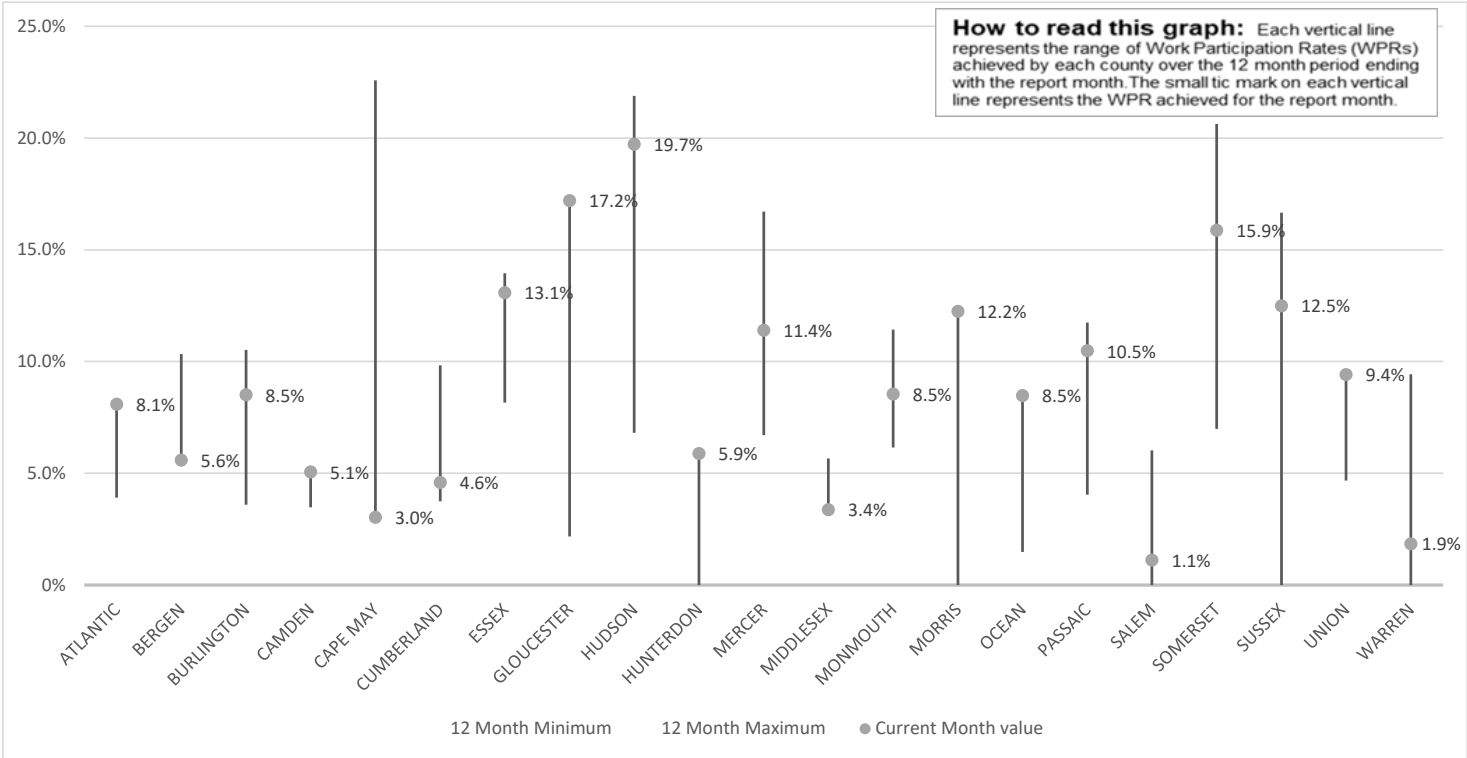
*=lower caseload % change



Data is derived from NJ MMIS Shared Data Warehouse Issuance files.
Effective July 2013 this data query source was converted to the SDW

TABLE 3:

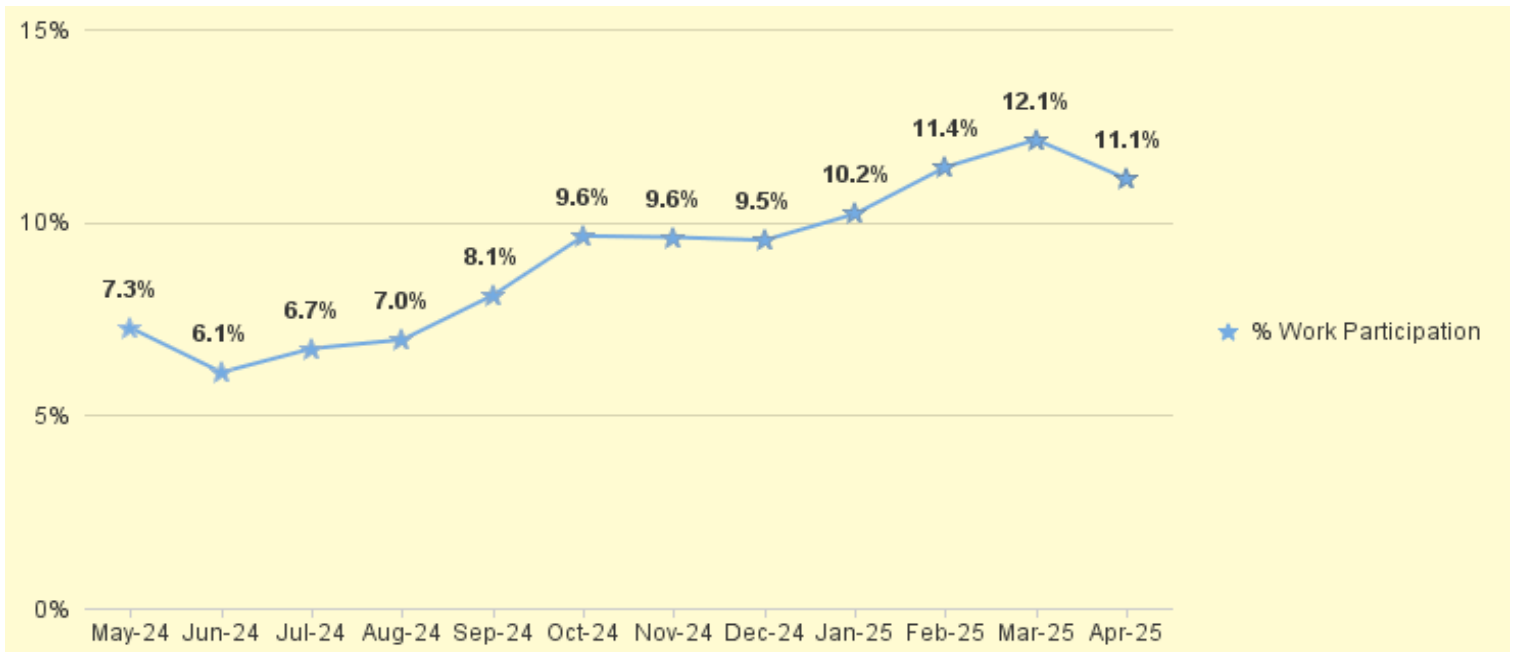
Work Participation Rates Achieved Over 12 Month Period
Ending with APRIL 2025



Data is derived from NJ MMIS Shared Data Warehouse Issuance files.
Effective July 2013 this data query source was converted to the SDW

TABLE 4 :

**WFNJ/TANF Work Participation Rates
for 12-Month Period Ending with APRIL 2025 Statewide**



* The Work Participation rate measures the number of countable Temporary Assistance for Needs Families (TANF) participants based on federal formula. The reported rate is considered to be preliminary until officially calculated by the federal government soon after the close of each federal fiscal year.

TABLE 5 :
NJ SNAP
(FOOD STAMPS) **NUMBER OF PARTICIPATING HOUSEHOLDS, PERSONS, ADULTS**
AND CHILDREN FOR APRIL 2025 (STATEWIDE)

APRIL 2023 THROUGH APRIL 2025											
HOUSEHOLDS					PERSONS						
		WFNJ/ TANF	Other low income	Total	% CHNG (1 YR)	Adults	Children	TOTAL	% CHNG (1 YR)	Age 60+	People with a disability
2023	APR	11,987	408,628	420,615	-6.6%	460,514	370,535	831,049	-4.1%	156,584	227,434
	MAY	11,026	397,178	408,204	-6.0%	446,453	341,774	788,227	-5.6%	157,317	225,010
	JUN	11,193	399,666	410,859	-2.9%	449,079	343,009	792,088	-2.7%	157,999	225,250
	JUL	11,874	408,109	419,983	2.0%	458,990	363,129	822,119	3.4%	158,680	226,431
	AUG	11,445	398,827	410,272	-5.5%	448,110	340,718	788,828	-10.0%	158,893	224,313
	SEP	11,607	397,739	409,346	1.6%	446,467	338,291	784,758	-0.6%	160,208	225,665
	OCT	11,862	399,663	411,525	4.1%	448,591	338,651	787,242	3.2%	161,651	226,946
	NOV	11,994	404,810	416,804	4.9%	453,939	342,920	796,859	3.7%	162,683	227,481
	DEC	12,360	413,594	425,954	5.4%	464,039	351,241	815,280	3.9%	164,787	233,859
2023	Average	11,608	401,054	412,663		451,036	348,079	799,115		158,570	226,377
2024	JAN	12,147	413,384	425,531	6.5%	462,636	348,128	810,764	4.7%	164,794	231,669
	FEB	11,859	416,486	428,345	7.3%	465,489	348,007	813,496	5.0%	165,676	231,340
	MAR	12,058	426,988	439,046	4.5%	476,761	357,715	834,476	0.1%	167,855	233,743
	APR	11,717	426,510	438,227	4.2%	474,957	354,424	829,381	-0.2%	168,166	233,544
	MAY	11,715	431,264	442,979	8.5%	479,707	356,729	836,436	6.1%	169,629	234,656
	JUN	11,848	435,764	447,612	8.9%	484,805	359,806	844,611	6.6%	171,199	235,765
	JUL	11,626	432,725	444,351	5.8%	481,340	354,315	835,655	1.6%	171,322	234,963
	AUG	12,047	438,849	450,896	9.9%	488,286	358,835	847,121	7.4%	172,882	236,688
	SEP	11,733	432,439	444,172	8.5%	480,588	350,383	830,971	5.9%	172,370	235,245
	OCT	11,714	435,963	447,677	8.8%	484,036	353,435	837,471	6.4%	173,563	236,826
	NOV	11,621	435,899	447,520	7.4%	483,897	354,051	837,948	5.2%	174,605	237,983
	DEC	11,102	432,098	443,200	4.0%	479,225	350,243	829,468	1.7%	174,494	242,096
2024	Average	11,766	429,864	441,630		478,477	353,839	832,317		170,546	235,377
2025	JAN	10,684	427,742	438,426	3.0%	473,595	345,621	819,216	1.0%	174,024	239,748
	FEB	10,596	426,559	437,155	2.1%	472,395	344,628	817,023	0.4%	174,677	239,661
	MAR	10,261	427,102	437,363	-0.4%	472,834	344,206	817,040	-2.1%	175,544	239,977
	APR	9,895	423,209	433,104	-1.2%	467,962	338,278	806,240	-2.8%	176,498	241,244
2025	Average To Date	10,359	426,153	436,512		471,697	343,183	814,880		175,186	240,158

This Table is based on those Households & Persons that received SNAP issuances (benefits) during the month

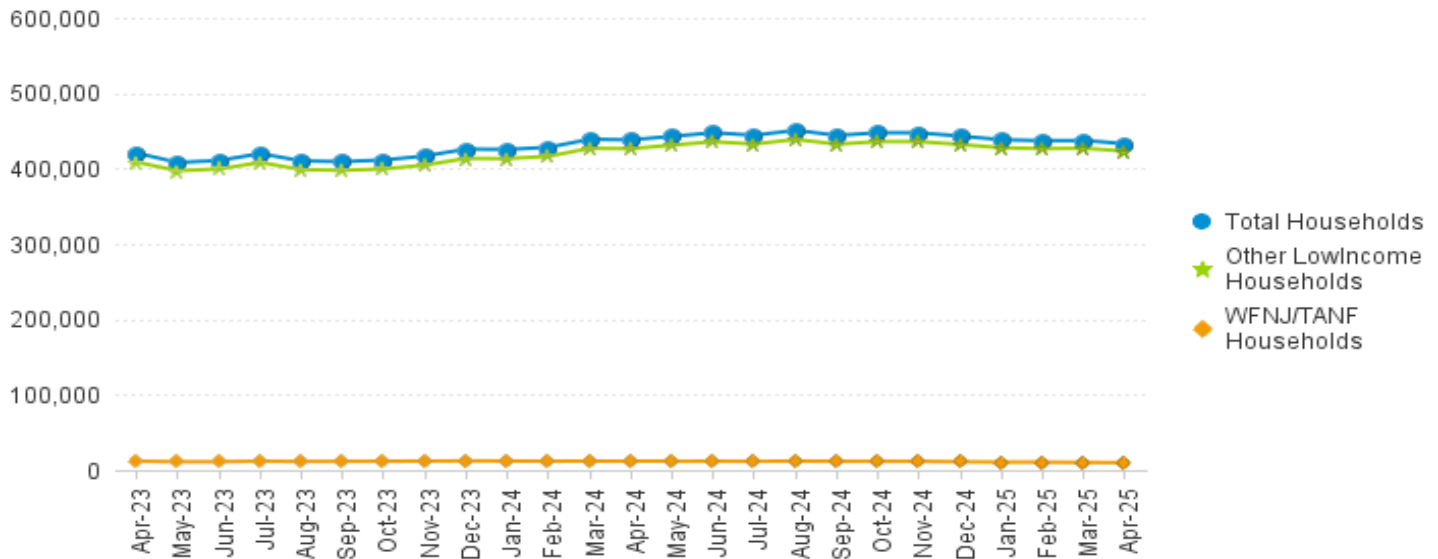
Data is derived from NJ MMIS Shared Data Warehouse.

Effective July 2013 this data query source was converted to the SDW.

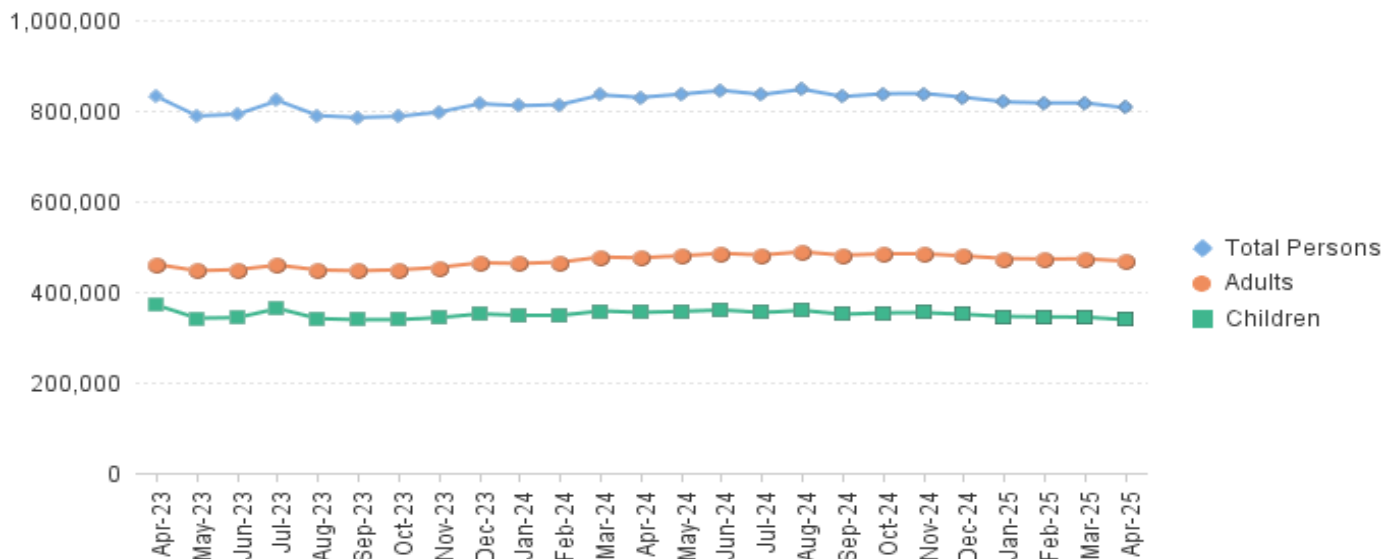
* Age 60+ and People with a disability columns are independent subsets of total persons. An individual might appear in both columns

**TABLE 6: NJ SNAP (FOOD STAMPS)
TRENDS FOR PARTICIPATING HOUSEHOLDS & PERSONS
APRIL 2023 THROUGH APRIL 2025 (STATEWIDE)**

Statewide NJ SNAP Households: APRIL 2023 Through APRIL 2025



Statewide NJ SNAP Persons: APRIL 2023 Through APRIL 2025



Data is derived from NJ MMIS Shared Data Warehouse Issuance files.
Effective July 2013 this data query source was converted to the SDW

TABLE 7 : NJ SNAP

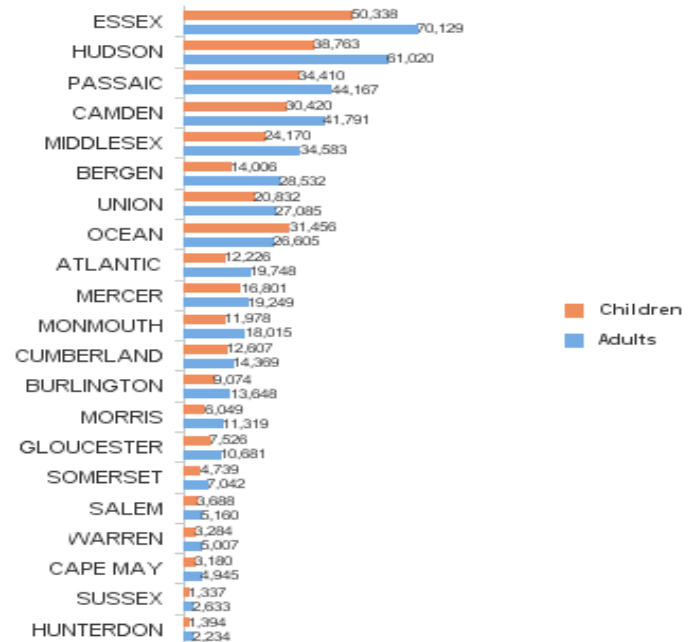
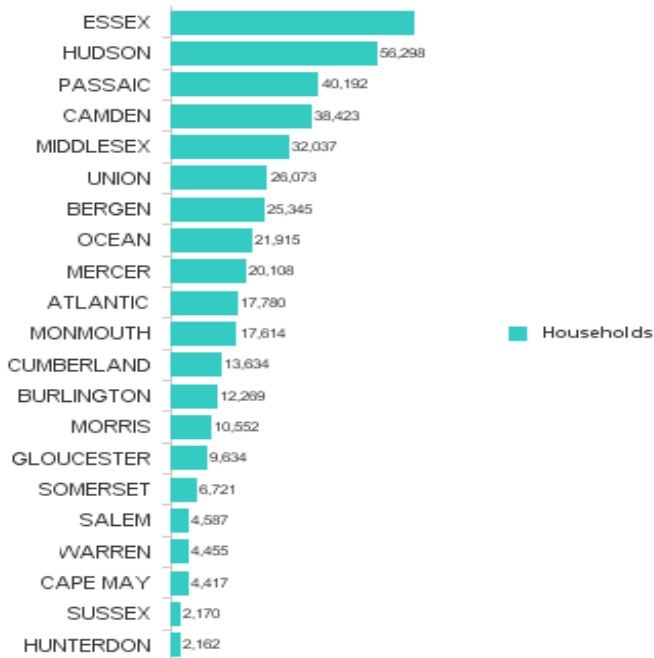
**NUMBER OF PARTICIPATING HOUSEHOLDS, PERSONS, ADULTS
AND CHILDREN BY COUNTY FOR APRIL 2025**

County	HOUSEHOLDS				PERSONS				Age 60+	People with a disability
	WFNJ/ TANF	Other low income	TOTAL	% Chng (1 Yr)	Adults	Children	TOTAL	% Chng (1 Yr)		
ATLANTIC	509	17,271	17,780	-3.9%	19,748	12,226	31,974	-6.6%	7,081	10,244
BERGEN	291	25,054	25,345	3.6%	28,532	14,006	42,538	3.2%	15,840	17,787
BURLINGTON	449	11,820	12,269	7.6% Δ	13,648	9,074	22,722	5.3%	4,463	7,476
CAMDEN	1,143	37,280	38,423	-4.3% *	41,791	30,420	72,211	-6.6%	12,666	20,793
CAPE MAY	88	4,329	4,417	1.5%	4,945	3,180	8,125	-1.5%	1,538	2,388
CUMBERLAND	300	13,334	13,634	-1.9%	14,369	12,607	26,976	-5.0%	4,204	7,729
ESSEX	1,409	65,309	66,718	-6.7% *	70,129	50,338	120,467	-8.0% *	22,477	32,253
GLOUCESTER	242	9,392	9,634	8.2% Δ	10,681	7,526	18,207	7.3% Δ	3,470	6,470
HUDSON	1,709	54,589	56,298	-2.7%	61,020	38,763	99,783	-5.1%	25,008	30,338
HUNTERDON	30	2,132	2,162	-1.2%	2,234	1,394	3,628	0.7%	905	1,305
MERCER	689	19,419	20,108	-2.6%	19,249	16,801	36,050	-3.5%	6,411	10,970
MIDDLESEX	646	31,391	32,037	6.0%	34,583	24,170	58,753	5.4% Δ	15,938	19,983
MONMOUTH	221	17,393	17,614	-1.3%	18,015	11,978	29,993	-3.3%	7,735	10,383
MORRIS	105	10,447	10,552	6.9% Δ	11,319	6,049	17,368	6.0% Δ	5,792	6,352
OCEAN	321	21,594	21,915	1.1%	26,605	31,456	58,061	-1.6%	8,186	11,898
PASSAIC	861	39,331	40,192	2.8%	44,167	34,410	78,577	0.9%	17,379	20,702
SALEM	139	4,448	4,587	3.6%	5,160	3,688	8,848	-1.0%	1,394	2,471
SOMERSET	186	6,535	6,721	4.2%	7,042	4,739	11,781	2.9%	3,128	4,216
SUSSEX	21	2,149	2,170	0.2%	2,633	1,337	3,970	-3.3%	1,042	1,633
UNION	458	25,615	26,073	-8.1% *	27,085	20,832	47,917	-7.7% *	10,196	13,072
WARREN	78	4,377	4,455	6.0%	5,007	3,284	8,291	4.7%	1,645	2,781
NJ TOTAL	9,895	423,209	433,104	-1.2%	467,962	338,278	806,240	-2.8%	176,498	241,244

Δ=higher caseload % change

*=lower caseload % change

**Total NJ SNAP Recipients
APRIL 2025 by County**



Data is derived from NJ MMIS Shared Data Warehouse.

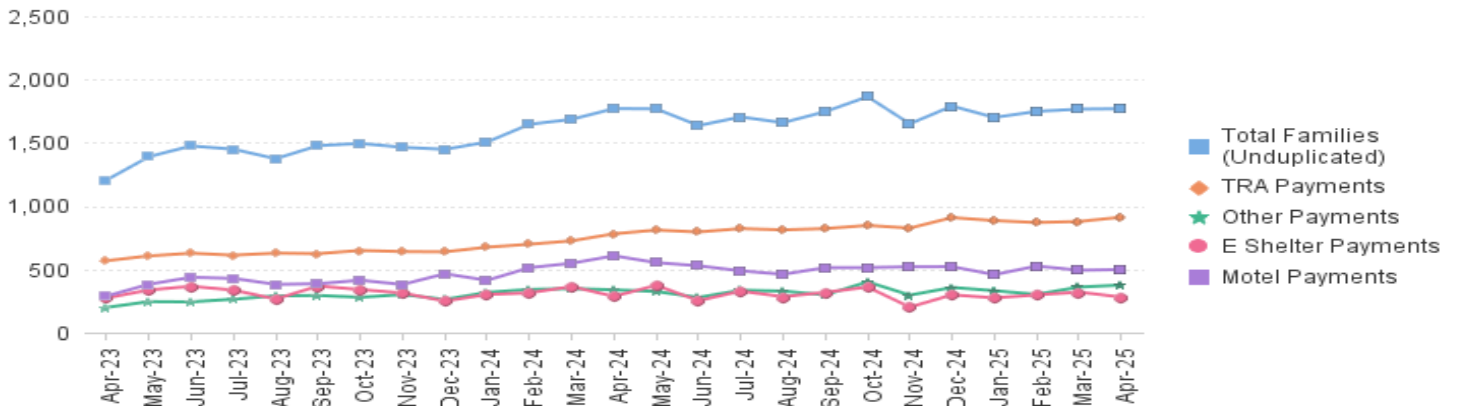
Effective July 2013 this data query source was converted to the SDW.

* Age 60+ and People with a disability columns are independent subsets of total persons. An individual might appear in both columns

TABLE 8 : EMERGENCY ASSISTANCE TOTAL NUMBER OF ELIGIBLE FAMILIES RECEIVING EMERGENCY ASSISTANCE PAYMENTS APRIL 2023 THROUGH APRIL 2025 - STATEWIDE (STATEWIDE)

		Total WFNJ/EA Families (Undupl)	% CHNG (1 YR)	Temp Rent Asst. Payments (Undupl)	% CHNG (1 YR)	Motel Housing Payments (Undupl)	% CHNG (1 YR)	Shelter/Transitional Housing Payments (Undupl)	% CHNG (1 YR)	Other WFNJ/EA Payments (Undupl)	% CHNG (1 YR)
2023	APR	1,206	-5.9%	568	-27.8%	289	72.0%	274	3.4%	199	-11.9%
	MAY	1,390	1.0%	606	-23.5%	382	109.9%	337	2.7%	245	2.5%
	JUN	1,475	6.3%	627	-21.7%	437	95.1%	366	32.1%	243	12.5%
	JUL	1,449	8.7%	612	-24.6%	428	101.9%	336	38.8%	264	3.5%
	AUG	1,374	-8.9%	628	-26.0%	381	56.8%	265	-26.0%	290	19.3%
	SEP	1,477	7.2%	624	-16.5%	386	76.3%	368	9.2%	294	46.3%
	OCT	1,495	23.9%	649	9.6%	414	76.9%	340	26.9%	279	3.7%
	NOV	1,464	36.6%	640	15.7%	380	81.0%	313	40.4%	301	48.3%
	DEC	1,448	21.0%	638	16.8%	465	66.1%	249	-9.8%	262	8.7%
2023	Average	1,398		608		385		325		258	
2024	JAN	1,506	20.5%	675	19.7%	413	33.2%	301	0.7%	318	42.0%
	FEB	1,646	27.5%	698	27.1%	513	59.3%	314	-11.5%	341	54.3%
	MAR	1,685	15.3%	725	23.9%	548	30.2%	364	-7.6%	348	24.7%
	APR	1,770	46.8%	781	37.5%	607	110.0%	286	4.4%	338	69.8%
	MAY	1,768	27.2%	810	33.7%	553	44.8%	374	11.0%	325	32.7%
	JUN	1,636	10.9%	795	26.8%	528	20.8%	252	-31.1%	278	14.4%
	JUL	1,704	17.6%	822	34.3%	488	14.0%	328	-2.4%	335	26.9%
	AUG	1,659	20.7%	812	29.3%	461	21.0%	284	7.2%	328	13.1%
	SEP	1,746	18.2%	822	31.7%	513	32.9%	318	-13.6%	298	1.4%
	OCT	1,864	24.7%	847	30.5%	514	24.2%	360	5.9%	401	43.7%
	NOV	1,650	12.7%	826	29.1%	520	36.8%	201	-35.8%	296	-1.7%
	DEC	1,790	23.6%	909	42.5%	521	12.0%	299	20.1%	357	36.3%
2024	Average	1,702		794		515		307		330	
2025	JAN	1,700	12.9%	885	31.1%	458	10.9%	274	-9.0%	331	4.1%
	FEB	1,748	6.2%	870	24.6%	526	2.5%	298	-5.1%	302	-11.4%
	MAR	1,766	4.8%	878	21.1%	493	-10.0%	320	-12.1%	360	3.4%
	APR	1,769	-0.1%	912	16.8%	498	-18.0%	281	-1.7%	376	11.2%
2025	Average To Date	1,746		886		494		293		342	

**NJ STATEWIDE
Families Receiving Emergency Assistance
APRIL 2023 THROUGH APRIL 2025**



* Effective Feb '11 Transitional Housing Payments were removed from 'Other EA Payments' and added to 'Shelter Payments'.

**TABLE 9 :
EMERGENCY ASSISTANCE (BY COUNTY) TOTAL NUMBER OF ELIGIBLE FAMILIES RECEIVING EMERGENCY ASSISTANCE PAYMENTS BY COUNTY (UNDUPLICATED CASES) FOR APRIL 2025**

County	TOTAL WFNJ/EA Families (Undupl)	% CHNG From APR 24	Temp Rent Asst. Payments (Undupl)	Motel Housing Payments (Undupl)	Shelter/Transitional Housing Payments (Undupl)	Other WFNJ/EA Payments (Undupl)	SSI Recipients Receiving EA **
ATLANTIC	73	43.1%	45	21	1	16	56
BERGEN	47	11.9%	27	5	10	12	13
BURLINGTON	153	-8.4%	6	98	50	3	10
CAMDEN	69	23.2%	14	30	26	10	19
CAPE MAY	14	-54.8% *	6	8	0	2	21
CUMBERLAND	6	-25.0%	0	0	6	1	3
ESSEX	103	-17.6%	54	0	40	27	25
GLOUCESTER	38	111.1% Δ	2	12	17	18	24
HUDSON	435	12.4%	310	85	40	105	128
HUNTERDON	5	0%	1	4	0	1	3
MERCER	210	26.5%	112	76	7	52	152
MIDDLESEX	103	-1.9%	48	36	6	31	55
MONMOUTH	12	-78.6% *	2	0	6	5	41
MORRIS	24	9.1%	13	12	1	3	26
OCEAN	61	-7.6%	29	29	0	9	16
PASSAIC	199	1.5%	157	9	24	34	28
SALEM	3	50.0% Δ	0	1	0	2	5
SOMERSET	76	-22.4%	44	24	3	19	47
SUSSEX	3	-70.0% *	0	1	2	0	6
UNION	116	-20.5%	32	39	42	22	21
WARREN	19	46.2% Δ	10	8	0	4	4
NJ Total	1,769	-0.1%	912	498	281	376	703

Δ=higher caseload % change

*=lower caseload % change

** SSI-EA includes pay codes 22 and 24, data is derived from NJ Division of Family Development FAMIS Report #FM430-03A

WFNJ/EA data is derived from NJ MMIS Shared Data Warehouse.

Effective July 2013 this data query source was converted to the SDW.

**Number WFNJ Families Receiving EA by County
APRIL 2025**

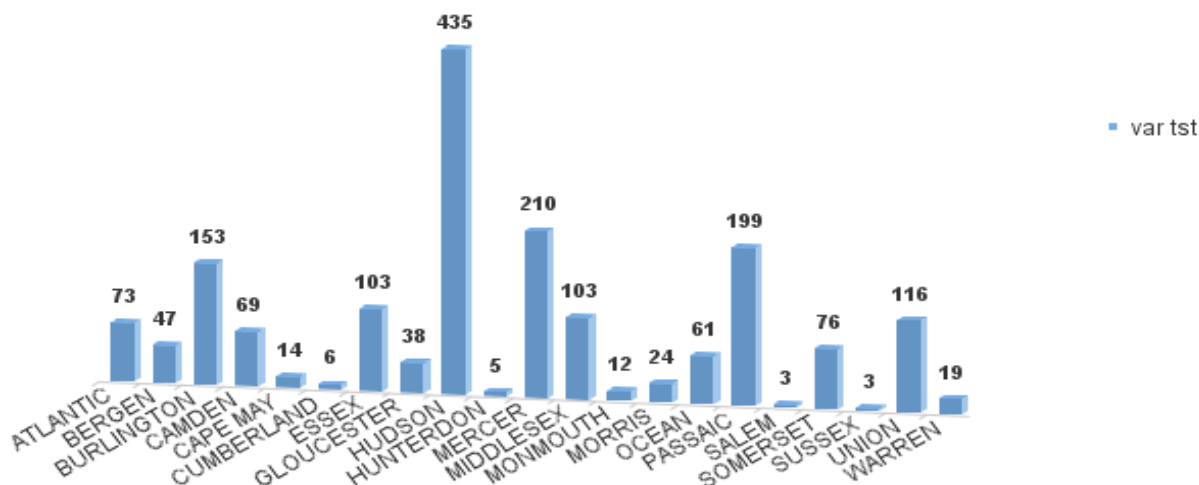
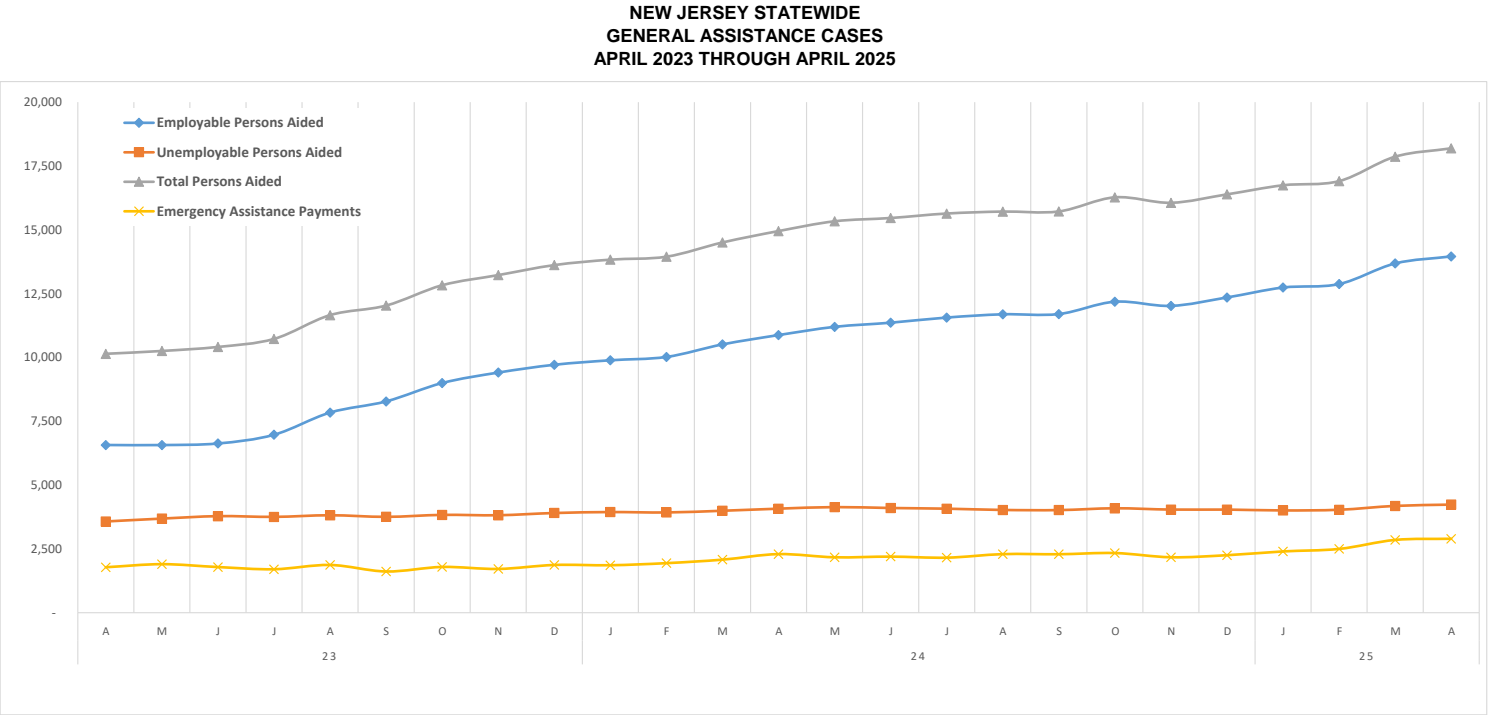


TABLE 10:
GENERAL
ASSISTANCE
PROGRAM

NUMBER OF EMPLOYABLE AND UNEMPLOYABLE RECIPIENTS
AND EMERGENCY ASSISTANCE PAYMENTS - STATEWIDE
APRIL 2023 THROUGH APRIL 2025

PROGRAM	Total Cases						Emergency Assistance Cases			
	Employable	% Chng (1 Yr)	Unemployable	% Chng (1 Yr)	Total	% Chng (1 Yr)	Temporary Rental Assistance	Other GA-EA	Total	% Chng (1 Yr)
2023 APR	6,569	-44.4%	3,573	-6.5%	10,142	-35.1%	623	1,158	1,781	-8.1%
MAY	6,567	-45.5%	3,686	-3.1%	10,253	-35.3%	634	1,267	1,901	-0.1%
JUN	6,629	-46.1%	3,782	-2.0%	10,411	-35.6%	633	1,155	1,788	-12.0%
JUL	6,971	-44.0%	3,754	-2.8%	10,725	-34.3%	605	1,097	1,702	-12.9%
AUG	7,840	-19.9%	3,817	14.2%	11,657	-11.2%	602	1,268	1,870	-10.4%
SEP	8,277	-1.1%	3,755	16.4%	12,032	3.8%	610	1,005	1,615	-14.8%
OCT	8,997	14.9%	3,831	16.4%	12,828	15.4%	583	1,209	1,792	1.9%
NOV	9,407	28.6%	3,818	14.8%	13,225	24.3%	600	1,114	1,714	4.4%
DEC	9,712	39.7%	3,905	14.4%	13,617	31.4%	598	1,272	1,870	6.5%
2023 AVERAGE	7,575		3,694		11,269		603	1,173	1,776	
2024 JAN	9,888	46.3%	3,942	14.4%	13,830	35.5%	612	1,247	1,859	9.2%
FEB	10,019	52.7%	3,927	15.2%	13,946	39.9%	513	1,428	1,941	11.6%
MAR	10,510	59.1%	3,993	12.3%	14,503	42.7%	629	1,449	2,078	10.0%
APR	10,875	65.6%	4,075	14.0%	14,950	47.4%	659	1,636	2,295	28.9%
MAY	11,197	70.5%	4,136	12.2%	15,333	49.5%	680	1,490	2,170	14.2%
JUN	11,360	71.4%	4,101	8.4%	15,461	48.5%	696	1,501	2,197	22.9%
JUL	11,562	65.9%	4,075	8.6%	15,637	45.8%	662	1,494	2,156	26.7%
AUG	11,689	49.1%	4,025	5.4%	15,714	34.8%	749	1,545	2,294	22.7%
SEP	11,699	41.3%	4,019	7.0%	15,718	30.6%	761	1,529	2,290	41.8%
OCT	12,182	35.4%	4,090	6.8%	16,272	26.8%	766	1,571	2,337	30.4%
NOV	12,019	27.8%	4,039	5.8%	16,058	21.4%	784	1,387	2,171	26.7%
DEC	12,349	27.2%	4,039	3.4%	16,388	20.3%	766	1,486	2,252	20.4%
2024 AVERAGE	11,279		4,038		15,318		690	1,480	2,170	
2025 JAN	12,738	28.8%	4,006	1.6%	16,744	21.1%	814	1,586	2,400	29.1%
FEB	12,874	28.5%	4,032	2.7%	16,906	21.2%	861	1,637	2,498	28.7%
MAR	13,681	30.2%	4,183	4.8%	17,864	23.2%	883	1,968	2,851	37.2%
APR	13,957	28.3%	4,234	3.9%	18,191	21.7%	931	1,965	2,896	26.2%
2025 AVERAGE TO DATE	13,313		4,114		17,426		872	1,789	2,661	



Source: NJ Division of Family Development, GA Fiscal Unit

TABLE 11:
GENERAL
ASSISTANCE
PROGRAM

EMPLOYABLE AND UNEMPLOYABLE CASES
AND EMERGENCY ASSISTANCE CASES RECEIVING PAYMENTS BY COUNTY
APRIL 2025

	Total Cases						Emergency Assistance Cases			
	Employable	% Chng (1 Yr)	Unemployable	% Chng (1 Yr)	Total	% Chng (1 Yr)	Temporary Rental Assistance	Other GA-EA	Total	% Chng (1 Yr)
ATLANTIC	1,221	13.6%	138	-13.8%	1,359	10.0%	135	61	196	42.0%
BERGEN	424	23.3%	213	-20.5%	637	4.1%	70	40	110	12.2%
BURLINGTON	650	50.8%	252	20.0%	902	40.7%	7	241	248	38.5%
CAMDEN	1,939	23.6%	510	1.0%	2,449	18.1%	35	101	136	10.6%
CAPE MAY	245	26.9%	57	1.8%	302	21.3%	22	51	73	-17.0%
CUMBERLAND	613	50.6%	211	14.7%	824	39.4%	3	25	28	-9.7%
ESSEX	1,385	28.5%	305	13.4%	1,690	25.5%	47	147	194	39.6%
GLOUCESTER	351	91.8%	126	1.6%	477	55.4%	3	48	51	75.9%
HUDSON	2,097	37.3%	311	-15.5%	2,408	27.1%	224	167	391	51.6%
HUNTERDON	52	-21.2%	52	8.3%	104	-8.8%	1	17	18	-40.0%
MERCER	764	45.2%	280	4.5%	1,044	31.5%	57	110	167	41.5%
MIDDLESEX	568	57.3%	337	-1.2%	905	28.9%	62	128	190	53.2%
MONMOUTH	468	26.5%	261	19.2%	729	23.8%	2	92	94	-12.1%
MORRIS	271	21.0%	157	0.6%	428	12.6%	42	52	94	-4.1%
OCEAN	409	7.9%	239	5.8%	648	7.1%	21	125	146	100.0%
PASSAIC	890	32.8%	208	16.9%	1,098	29.5%	92	54	146	43.1%
SALEM	205	17.8%	78	73.3%	283	29.2%	5	7	12	71.4%
SOMERSET	376	13.6%	117	19.4%	493	14.9%	43	166	209	-4.6%
SUSSEX	37	-5.1%	18	-35.7%	55	-17.9%	0	12	12	100.0%
UNION	899	7.4%	285	10.5%	1,184	8.1%	49	286	335	19.6%
WARREN	93	2.2%	79	19.7%	172	9.6%	11	35	46	-4.2%
NJ TOTAL	13,957	28.3%	4,234	3.9%	18,191	21.7%	931	1,965	2,896	26.2%

Δ= ↑ Caseload %

* = ↓ Caseload %

TABLE 12:
OFFICE OF
CHILD SUPPORT
SERVICES

OFFICE OF CHILD SUPPORT SERVICES
QUARTERLY PERFORMANCE REPORT
STATE SUMMARY
TITLE IV-D SOURCE COLLECTION REPORT

Comparison of Quarter-2 (FFY 2024 vs. FFY 2025)

COLLECTION SOURCE	TOTAL 1/1/2024 - 3/31/2024	% OF TOTAL COLLECTIONS	TOTAL 1/1/2025 - 3/31/2025	% OF TOTAL COLLECTIONS	DOLLAR CHANGE	% CHANGE
FEDERAL TAX	\$12,243,325	4.64%	\$12,880,217	4.85%	\$ 636,892	5.20%
STATE TAX	\$409,031	0.15%	\$750,309	0.28%	\$ 341,278	83.44%
UIB	\$7,869,464	2.98%	\$7,897,340	2.98%	\$ 27,876	0.35%
INC WITHHOLD	\$177,803,064	67.32%	\$173,960,518	65.56%	\$ (3,842,546)	-2.16%
FROM OTHER STATES	\$9,846,134	3.73%	\$9,437,594	3.56%	\$ (408,540)	-4.15%
ADMIN ENFORCEMENT	\$4,829,124	1.83%	\$7,376,755	0.03	\$ 2,547,632	52.76%
OTHER	\$51,119,225	19.35%	\$53,055,478	19.99%	\$ 1,936,253	3.79%
TOTAL COLLECTIONS*	\$264,119,367	100%	\$265,358,211	100%	\$ 1,238,845	0.47%
DISBURSED COLLECTIONS**	\$226,333,510		\$223,837,959		\$ (2,495,551)	-1.10%

* Includes collections on both current support and arrears.

** Includes collections on both current support and arrears; also includes money sent to other states.

SOURCE: NJKiDS (Based on Federal Quarterly Report of Collections - OCSE-34A except Disbursed Collections)

Disbursed Collections obtained from Federal Data Report - OCSE-157, which is reported annually to Congress and used in the calculation of incentive dollars earned by each state.

TABLE 13:
OFFICE OF
CHILD SUPPORT
SERVICES

OFFICE OF CHILD SUPPORT SERVICES
STATE SUMMARY
TITLE IV-D PATERNITY ESTABLISHMENT REPORT
Comparison of April (FFY 2024 vs. FFY 2025)

County	APRIL 2024			APRIL 2025			Increase or Decrease (-) from FFY 2024 to FFY 2025
	Total Children Born Out of Wedlock*	Number of Paternities Established	Percent of Paternities Established	Total Children Born Out of Wedlock*	Number of Paternities Established	Percent of Paternities Established	
Atlantic	4,446	4,446	100.0%	3,997	3,984	99.7%	-0.3%
Bergen	2,277	2,233	98.1%	2,107	2,065	98.0%	-0.1%
Burlington	3,370	3,320	98.5%	3,067	2,988	97.4%	-1.1%
Camden	11,313	11,083	98.0%	10,534	10,305	97.8%	-0.1%
Cape May	794	794	100.0%	716	715	99.9%	-0.1%
Cumberland	4,992	4,945	99.1%	4,562	4,539	99.5%	0.4%
Essex	17,240	16,527	95.9%	15,761	15,102	95.8%	0.0%
Gloucester	2,988	2,978	99.7%	2,684	2,720	101.3%	1.7%
Hudson	6,997	6,816	97.4%	6,389	6,217	97.3%	-0.1%
Hunterdon	133	139	104.5%	115	116	100.9%	-3.6%
Mercer	4,586	4,462	97.3%	4,165	4,076	97.9%	0.6%
Middlesex	4,466	4,366	97.8%	4,040	3,947	97.7%	-0.1%
Monmouth	3,126	3,056	97.8%	2,825	2,762	97.8%	0.0%
Morris	766	761	99.3%	678	676	99.7%	0.4%
Ocean	3,432	3,373	98.3%	3,009	3,021	100.4%	2.1%
Passaic	6,695	6,569	98.1%	6,058	5,945	98.1%	0.0%
Salem	2,213	2,113	95.5%	2,153	2,083	96.7%	1.3%
Somerset	864	855	99.0%	730	716	98.1%	-0.9%
Sussex	368	376	102.2%	339	338	99.7%	-2.5%
Union	7,974	7,698	96.5%	7,656	7,362	96.2%	-0.4%
Warren	485	486	100.2%	396	400	101.0%	0.8%
NJ TOTALS	89,525	87,396	97.6%	81,981	80,077	97.7%	0.1%

SOURCE: NJKiDS (Based on Federal Performance Measures - OCSE-157)

* Information on Out of Wedlock Births obtained from NJ Bureau of Vital Statistics

TABLE 14:
OFFICE OF
CHILD SUPPORT
SERVICES

OFFICE OF CHILD SUPPORT SERVICES
STATE SUMMARY
TITLE IV-D REPORT OF CASES WITH ORDERS
Comparison of April (FFY 2024 vs. FFY 2025)

County	APRIL 2024			APRIL 2025			Increase or Decrease (-) from FFY 2024 to FFY 2025
	Total Cases	Cases with Orders	% of Cases with Orders	Total Cases	Cases with Orders	% of Cases with Orders	
Atlantic	9,168	8,381	91.4%	8,613	7,944	92.2%	0.8%
Bergen	9,508	9,221	97.0%	9,277	9,019	97.2%	0.2%
Burlington	10,690	9,628	90.1%	10,355	9,244	89.3%	-0.8%
Camden	22,790	21,308	93.5%	22,160	20,570	92.8%	-0.7%
Cape May	2,281	2,181	95.6%	2,204	2,109	95.7%	0.1%
Cumberland	9,800	9,189	93.8%	9,260	8,804	95.1%	1.3%
Essex	32,426	27,786	85.7%	31,579	26,840	85.0%	-0.7%
Gloucester	8,080	7,666	94.9%	7,706	7,232	93.8%	-1.0%
Hudson	16,322	14,352	87.9%	15,709	13,944	88.8%	0.8%
Hunterdon	1,023	967	94.5%	984	942	95.7%	1.2%
Mercer	10,508	9,386	89.3%	10,173	9,018	88.6%	-0.7%
Middlesex	14,140	12,933	91.5%	13,702	12,493	91.2%	-0.3%
Monmouth	9,772	9,181	94.0%	9,257	8,560	92.5%	-1.5%
Morris	4,479	4,359	97.3%	4,388	4,242	96.7%	-0.6%
Ocean	11,408	10,868	95.3%	10,581	10,143	95.9%	0.6%
Passaic	14,871	13,426	90.3%	14,368	12,881	89.7%	-0.6%
Salem	3,379	3,163	93.6%	3,278	3,080	94.0%	0.4%
Somerset	3,536	3,194	90.3%	3,329	3,041	91.3%	1.0%
Sussex	2,148	2,114	98.4%	2,097	2,046	97.6%	-0.8%
Union	14,705	13,944	94.8%	14,264	13,573	95.2%	0.3%
Warren	2,005	1,939	96.7%	1,865	1,785	95.7%	-1.0%
NJ TOTALS	213,039	195,186	91.6%	205,149	187,510	91.4%	-0.2%

SOURCE: NJKiDS (Based on Federal Performance Measures - OCSE-157)

TABLE 15:
OFFICE OF
CHILD SUPPORT
SERVICES

OFFICE OF CHILD SUPPORT SERVICES
STATE SUMMARY
TITLE IV-D COLLECTIONS ON CURRENT SUPPORT
Comparison of April (FFY 2024 vs. FFY 2025)

County	APRIL 2024			APRIL 2025			Increase or Decrease (-) from FFY 2024 to FFY 2025
	Total Current Support Due	Total Current Support Distributed	Total Collection Rate	Total Current Support Due	Total Current Support Distributed	Total Collection Rate	
Atlantic	\$3,348,496	\$2,199,824	65.7%	\$3,260,276	\$2,098,098	64.4%	-1.3%
Bergen	\$7,114,682	\$5,237,922	73.6%	\$6,948,221	\$5,101,575	73.4%	-0.2%
Burlington	\$4,887,927	\$3,365,249	68.8%	\$4,739,150	\$3,251,678	68.6%	-0.2%
Camden	\$7,015,327	\$4,188,569	59.7%	\$6,877,660	\$4,006,431	58.3%	-1.5%
Cape May	\$898,810	\$627,317	69.8%	\$895,621	\$622,653	69.5%	-0.3%
Cumberland	\$2,727,761	\$1,603,381	58.8%	\$2,657,481	\$1,555,697	58.5%	-0.2%
Essex	\$9,414,071	\$5,558,681	59.0%	\$9,419,415	\$5,536,326	58.8%	-0.3%
Gloucester	\$3,483,297	\$2,342,147	67.2%	\$3,360,594	\$2,256,345	67.1%	-0.1%
Hudson	\$6,610,347	\$4,215,531	63.8%	\$6,544,161	\$4,145,169	63.3%	-0.4%
Hunterdon	\$885,611	\$752,208	84.9%	\$862,930	\$700,684	81.2%	-3.7%
Mercer	\$3,663,343	\$2,326,207	63.5%	\$3,686,854	\$2,304,069	62.5%	-1.0%
Middlesex	\$6,736,634	\$4,647,589	69.0%	\$6,605,355	\$4,491,381	68.0%	-1.0%
Monmouth	\$5,493,318	\$4,027,980	73.3%	\$5,187,396	\$3,690,291	71.1%	-2.2%
Morris	\$3,627,133	\$2,704,445	74.6%	\$3,503,765	\$2,508,289	71.6%	-3.0%
Ocean	\$5,583,497	\$3,965,653	71.0%	\$5,445,938	\$3,723,681	68.4%	-2.6%
Passaic	\$5,729,382	\$3,619,773	63.2%	\$5,764,618	\$3,520,023	61.1%	-2.1%
Salem	\$984,581	\$592,664	60.2%	\$959,060	\$561,663	58.6%	-1.6%
Somerset	\$2,301,175	\$1,868,876	81.2%	\$2,250,731	\$1,838,987	81.7%	0.5%
Sussex	\$1,440,845	\$1,087,137	75.5%	\$1,401,042	\$1,045,912	74.7%	-0.8%
Union	\$6,364,053	\$4,200,473	66.0%	\$6,363,178	\$4,177,652	65.7%	-0.3%
Warren	\$1,074,783	\$819,573	76.3%	\$1,014,484	\$795,357	78.4%	2.1%
NJ TOTALS	\$89,385,073	\$59,951,200	67.1%	\$87,747,932	\$57,931,960	66.0%	-1.0%

SOURCE: NJKiDS (Based on Federal Performance Measures - OCSE-157)

TABLE 16:
OFFICE OF
CHILD SUPPORT
SERVICES

OFFICE OF CHILD SUPPORT SERVICES
STATE SUMMARY
TITLE IV-D CASES ARREARS COLLECTION REPORT
Comparison of April (FFY 2024 vs. FFY 2025)

County	APRIL 2024			APRIL 2025			Increase or Decrease (-) from FFY 2024 to FFY 2025
	Total Cases with Arrears	Total Amount Collected	Average Arrears Collection per Case	Total Cases with Arrears	Total Amount Collected	Average Arrears Collection per Case	
Atlantic	5,856	\$878,623	\$150.04	5,427	\$808,729	\$149.02	-\$1.02
Bergen	6,394	\$1,364,679	\$213.43	6,052	\$1,412,197	\$233.34	\$19.91
Burlington	6,590	\$1,189,885	\$180.56	6,135	\$1,095,168	\$178.51	-\$2.05
Camden	13,407	\$2,043,034	\$152.39	12,404	\$1,911,834	\$154.13	\$1.74
Cape May	1,566	\$271,818	\$173.57	1,432	\$213,266	\$148.93	-\$24.65
Cumberland	5,934	\$939,173	\$158.27	5,400	\$720,011	\$133.34	-\$24.93
Essex	17,249	\$2,665,484	\$154.53	16,292	\$2,804,373	\$172.13	\$17.60
Gloucester	5,274	\$884,727	\$167.75	4,774	\$718,379	\$150.48	-\$17.28
Hudson	10,074	\$1,612,311	\$160.05	9,473	\$1,582,109	\$167.01	\$6.97
Hunterdon	636	\$115,310	\$181.31	598	\$220,519	\$368.76	\$187.46
Mercer	6,575	\$956,412	\$145.46	6,131	\$1,050,066	\$171.27	\$25.81
Middlesex	8,892	\$1,552,455	\$174.59	8,446	\$1,533,396	\$181.55	\$6.96
Monmouth	6,242	\$1,278,764	\$204.86	5,573	\$1,231,757	\$221.02	\$16.16
Morris	3,113	\$711,492	\$228.56	2,923	\$561,531	\$192.11	-\$36.45
Ocean	7,240	\$1,324,214	\$182.90	6,480	\$1,064,327	\$164.25	-\$18.65
Passaic	9,390	\$1,649,711	\$175.69	8,805	\$1,410,681	\$160.21	-\$15.47
Salem	1,929	\$330,046	\$171.10	1,843	\$248,266	\$134.71	-\$36.39
Somerset	2,226	\$469,668	\$210.99	2,083	\$426,989	\$204.99	-\$6.00
Sussex	1,405	\$272,802	\$194.17	1,278	\$209,398	\$163.85	-\$30.32
Union	9,378	\$1,666,826	\$177.74	8,923	\$1,708,859	\$191.51	\$13.77
Warren	1,366	\$227,942	\$166.87	1,220	\$208,271	\$170.71	\$3.85
NJ TOTALS	130,736	\$22,405,376	\$171.38	121,692	\$21,140,126	\$173.72	\$2.34

SOURCE: OCSE-157 Child Support Enforcement Annual Data Report

Table 17
WFNJ**WORK FIRST NEW JERSEY STATISTICAL SUMMARY****APRIL 2025**

COUNTY	EMPLOYMENT DIRECTED ACTIVITIES			EMPLOYED OPEN (WFNJ RECIPIENT)	SUPPORT SERVICES ON ACTIVE CASE		CLOSED FOR EMPLOYMENT THIS MONTH	POST ASSISTANCE CHILD CARE
	CWEP	ALL	JOB SEARCH		CHILD CARE	TRAINING REL. EXPENSES		
		OTHER TRAINING						
ATLANTIC	31	50	1	26	36	78	6	13
BERGEN	35	22	79	13	52	2	5	13
BURLINGTON	76	9	57	24	33	5	5	6
CAMDEN	32	152	29	58	139	0	25	13
CAPE MAY	9	10	4	2	3	5	1	4
CUMBERLAND	0	43	36	15	27	56	5	5
ESSEX	141	246	19	98	165	193	35	54
GLOUCESTER	6	1	18	26	27	25	6	11
HUDSON	17	291	77	105	284	105	32	28
HUNTERDON	0	0	2	0	3	0	0	0
MERCER	128	236	21	33	158	82	10	41
MIDDLESEX	0	50	103	29	73	1	13	2
MONMOUTH	4	22	18	17	37	2	3	18
MORRIS	1	4	0	10	2	0	1	0
OCEAN	0	222	0	7	22	17	7	12
PASSAIC	137	116	0	24	109	68	11	4
SALEM	0	16	0	5	10	6	3	3
SOMERSET	81	23	18	19	54	37	5	1
SUSSEX	2	0	0	1	3	0	0	0
UNION	107	38	0	32	68	51	5	1
WARREN	1	9	3	1	7	0	1	0
STATE TOTAL	808	1560	485	545	1312	733	179	229

Data is derived from NJ Division of Family Development's FAMIS Reports RM064-01 & RM703-51, AdHoc Reports 5549 & 5598 and SDW Report WR00022WZ_CC

**DIVISION OF FAMILY DEVELOPMENT CURRENT PROGRAM STATISTICS
APRIL 2025**

ACRONYMS

EMERGENCY ASSISTANCE (EA) - Payments to those eligible for WFNJ/TANF or WFNJ/GA, authorized during the 30 consecutive days immediately following the emergency (defined as a substantial loss of shelter, food, clothing, or household furnishings by fire, flood or other similar disaster) or if eligible individual or family is in an imminent or actual state of homelessness.

NJ SNAP - Formerly the Food Stamp Program, now known as NJ SNAP (NJ Supplemental Nutrition Assistance Program) authorized by Congress as a nutritional supplement program to provide low income households with more food of greater variety and better nutrition. Program eligibility is based on household income, resources, and expenses for medical, shelter, and dependent care. CWA staff refers certain recipients to the New Jersey Department of Labor for participation in the Food Stamp Employment and Training Program.

FAMIS: Family Assistance Management Information System

GAAS: General Assistance Automated System

NJKIDS: New Jersey Kids Deserve Support (Child Support Information Management System)

NJ MMIS SHARED DATA WAREHOUSE: The Shared Data Warehouse (SDW) is the repository for New Jersey's DFD and Medicaid data. Since 2003, OptumInsight has administered the SDW and provided access to the data through a reporting tool known as Business Objects.

OMEGA: Online Management of Economic Goal Achievement

SSI-EA: Supplemental Security Income-Emergency Assistance

WFNJ: Work First New Jersey - Fully implemented July 1, 1997, this is New Jersey's welfare reform program which responds to the requirements of the Federal Personal Responsibility and Work Opportunity Reconciliation Act (**PRWORA**) of 1996. PRWORA established Temporary Assistance for Needy Families (**TANF**) as the replacement for AFDC cash assistance. WFNJ includes two segments, **WFNJ/TANF** for families with children, and **WFNJ/GA** (General Assistance) for single adults and couples without dependent children. WFNJ emphasizes achieving self-sufficiency and limits lifetime receipt of financial assistance to a total of five years.

**DIVISION OF FAMILY DEVELOPMENT CURRENT PROGRAM STATISTICS
APRIL 2025**

EXPLANATORY NOTES

The Department of Human Services Division of Family Development provides basic income and an opportunity to achieve self-sufficiency for individuals and families served by the Division's programs. The Division provides leadership, direction and supervision to those public agencies responsible for administering those programs and plans for and develops policies to promote self-sufficiency.

WFNJ STATISTICAL SUMMARY (TABLE 17)

Employment Directed Activities (EDA) - From Activities Summary Report (OMEGA report # RM064). Unduplicated count of persons participating in Community Work Experience Program (CWEP), All Other Training, or Job Search.

Number of Persons Employed This Month, Still Receiving TANF - Individuals with open "empl" activity on OMEGA. Ad hoc report.

Participants Receiving Child Care Services - From Issuance Disbursement Summary (OMEGA report # RM703). Total number of active participants who show receipt of Child Care.

Number of Persons Closed on FAMIS Due to Employment - From FAMIS report #5549-RM-2

Post TANF and Receiving Child Care - Persons no longer in receipt of TANF but still receiving child care. From Share Data Warehouse Child Care case count based on Child Care payments (SDW report WR00022WZ_CC).