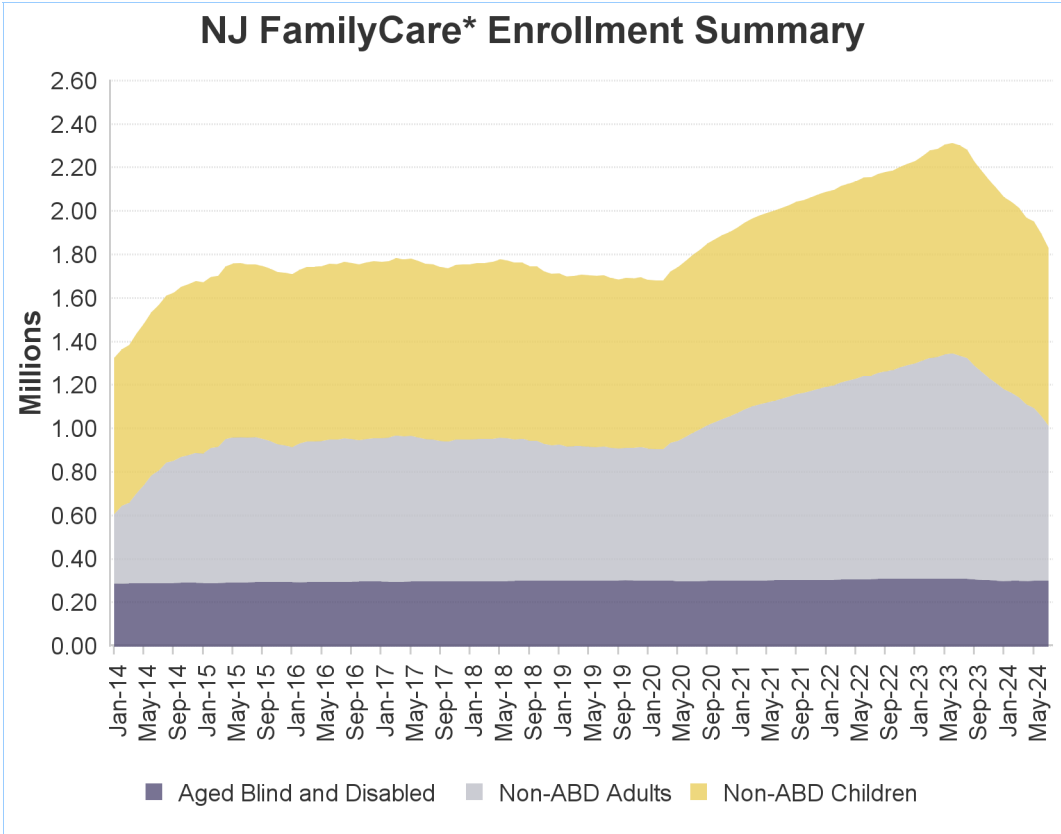


NJ FamilyCare* Enrollment Summary - July 2024			
Eligibility Category	Age < 21	Age > 20	Total
Aged	0	103,206	103,206
Blind	72	763	835
Disabled	30,539	168,712	199,251
Non-ABD Children	816,774	0	816,774
Non-ABD Adults	24,719	686,255	710,974
<b>Total</b>	<b>872,104</b>	<b>958,936</b>	<b>1,831,040</b>



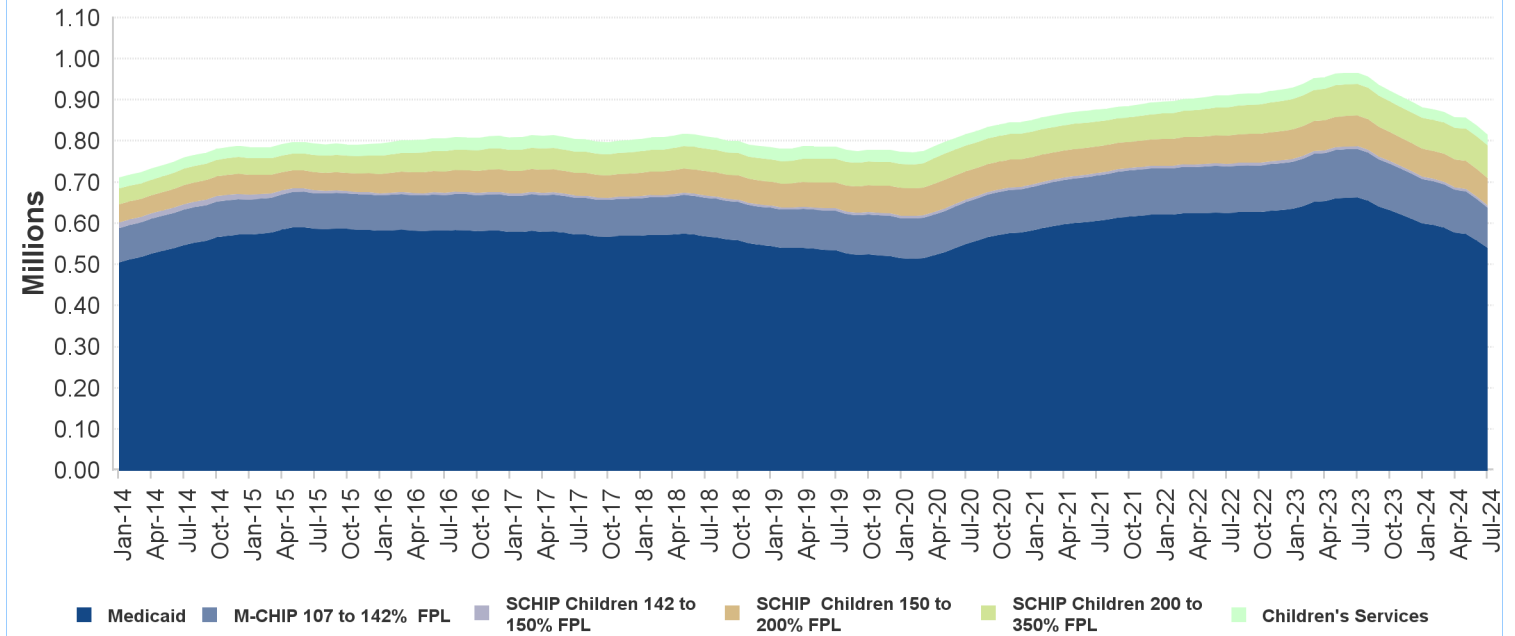
\* - NJ FamilyCare includes all individuals receiving public medical assistance through the Division of Medical Assistance and Health Services and includes those eligible for federal reimbursement through the Medicaid program and Children's Health Insurance Program established in the federal Social Security Act and those eligible for other public medical assistance programs established through various state laws.

## Non-ABD Children - July 2024

County	Medicaid	M-CHIP 107 to 142% FPL	SCHIP Children 142 to 150% FPL	SCHIP Children 150 to 200% FPL	SCHIP Children 200 to 350% FPL	Children's Services	Total
Atlantic	20,344	3,466	206	2,271	2,281	1,158	29,726
Bergen	29,521	6,222	349	4,716	6,934	1,753	49,495
Burlington	17,991	3,017	179	2,406	3,216	1,887	28,696
Camden	37,923	5,737	344	4,114	4,585	2,182	54,885
Cape May	4,439	748	42	547	761	347	6,884
Cumberland	17,007	2,982	188	1,807	1,771	698	24,453
Essex	74,936	10,480	521	6,591	6,827	2,401	101,756
Gloucester	13,161	2,153	100	1,532	2,055	1,243	20,244
Hudson	52,158	9,327	500	5,566	5,669	1,093	74,313
Hunterdon	2,431	482	34	392	567	371	4,277
Mercer	26,238	4,472	235	3,044	3,132	2,002	39,123
Middlesex	40,461	8,906	513	6,230	7,909	1,580	65,599
Monmouth	22,514	4,732	253	3,062	4,026	1,754	36,341
Morris	11,567	2,212	172	1,996	2,406	1,004	19,357
Ocean	62,047	12,232	687	8,166	12,332	1,675	97,139
Passaic	48,095	8,687	572	5,196	5,503	1,021	69,074
Salem	4,683	613	33	446	556	335	6,666
Somerset	9,879	2,146	117	1,765	2,094	719	16,720
Sussex	3,369	617	40	683	898	446	6,053
Union	38,647	7,512	431	4,954	5,499	1,144	58,187
Warren	4,498	720	58	653	778	339	7,046
Other	26	1	0	0	0	713	740
<b>Total</b>	<b>541,935</b>	<b>97,464</b>	<b>5,574</b>	<b>66,137</b>	<b>79,799</b>	<b>25,865</b>	<b>816,774</b>

*Includes children eligible through CHIPRA - 10,167*

### Non-ABD Children

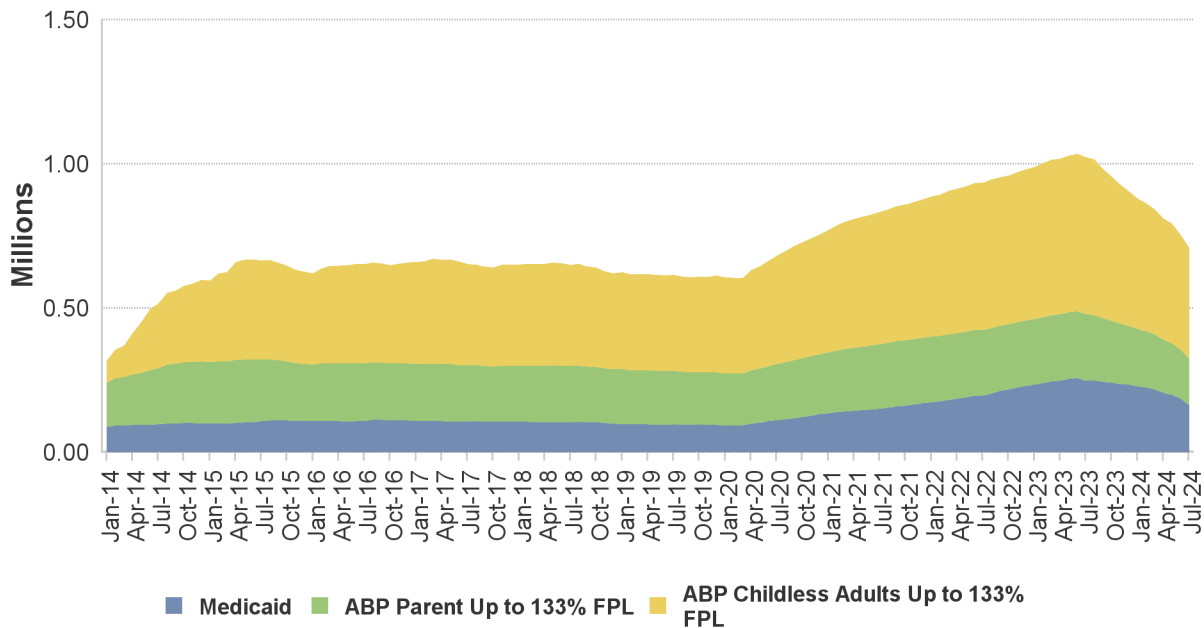


### Non-ABD Adults - July 2024

County	Medicaid *	ABP Parent Up to 133% FPL	ABP Childless Adults Up to 133% FPL	Total
Atlantic	6,208	7,123	16,634	29,965
Bergen	9,690	10,939	28,894	49,523
Burlington	6,476	5,408	15,914	27,798
Camden	14,397	11,287	31,883	57,567
Cape May	1,540	1,576	4,017	7,133
Cumberland	4,738	4,214	8,353	17,305
Essex	23,045	17,330	51,485	91,860
Gloucester	4,726	4,461	11,426	20,613
Hudson	14,946	16,854	39,721	71,521
Hunterdon	723	659	2,733	4,115
Mercer	6,772	5,423	15,893	28,088
Middlesex	13,514	13,275	32,225	59,014
Monmouth	6,277	6,267	19,372	31,916
Morris	3,785	3,343	11,421	18,549
Ocean	13,902	20,190	22,766	56,858
Passaic	15,093	16,989	29,617	61,699
Salem	1,611	1,224	2,886	5,721
Somerset	2,968	2,593	7,824	13,385
Sussex	1,343	1,381	3,711	6,435
Union	11,055	9,590	24,320	44,965
Warren	1,566	1,419	3,951	6,936
Other	1	0	7	8
<b>Total</b>	<b>164,376</b>	<b>161,545</b>	<b>385,053</b>	<b>710,974</b>

\* Includes pregnant women eligible through CHIPRA - 3,397

### Non-ABD Adults



### ABD Eligibles - July 2024

County	Aged	Blind	Disabled	Total
Atlantic	2,954	25	8,500	11,479
Bergen	12,418	47	11,005	23,470
Burlington	2,830	27	9,271	12,128
Camden	5,519	85	19,904	25,508
Cape May	938	3	2,378	3,319
Cumberland	1,630	25	7,637	9,292
Essex	10,077	142	26,772	36,991
Gloucester	1,508	24	7,015	8,547
Hudson	12,281	92	18,818	31,191
Hunterdon	599	6	1,693	2,298
Mercer	3,727	38	11,161	14,926
Middlesex	12,058	67	12,834	24,959
Monmouth	4,634	45	9,789	14,468
Morris	4,754	20	5,433	10,207
Ocean	4,010	24	10,424	14,458
Passaic	9,826	65	13,717	23,608
Salem	482	9	2,810	3,301
Somerset	4,179	16	4,356	8,551
Sussex	594	6	2,151	2,751
Union	7,409	62	11,338	18,809
Warren	771	7	2,192	2,970
Other	8	0	53	61
<b>Total</b>	<b>103,206</b>	<b>835</b>	<b>199,251</b>	<b>303,292</b>

*Includes 57,090 individuals in home and community-based waiver programs*

