

Community Support Services CSS



**JANUARY 14, 2017
1200 NEGRON DRIVE
HAMILTON, NJ
AUDITORIUM
10 AM**

Division of Mental Health & Addiction Services
wellnessrecoveryprevention



Meeting Agenda



- Review of Community Support Services (CSS)
- Review of CRNA and IRP
- Role of Interim Managing Entity (IME)
- Prior Authorization
- Office of Licensing (OOL)
- Q&A

What are Community Support Services (CSS) Concept



▶ **Background**

- Direction from Governor's Mental Health Taskforce to transform housing services
- individual led recovery is a key part of New Jersey Wellness and Recovery Transformation Action Plan
- Medicaid billing approved by Centers for Medicare and Medicaid Services
- Guided by Substance Abuse and Mental Health Services Administration (SAMSHA) wellness and recovery model

- ▶ **Concept:** Provider agency offers rehabilitation services and supports that enable individuals to achieve and continue actively participate in the community in the home of their choice.



Wellness and Recovery (Psychiatric Rehabilitation Methods)



- ▶ **Supportive partnership** – Individual works together *with* provider to meet goals
- ▶ **Goals Identified and chosen by individual**
 - Related to valued social roles
 - Related to safe and healthy housing environment
- ▶ **Goal related assessments** – Individual tells provider what they hope to achieve
- ▶ **Goal related skill development** - Skills that individual needs to learn to achieve his/her goals
- ▶ **Goal related resources** - Resources (linkage to services and information, etc.) that are needed to achieve the goal(s)

Wellness and Recovery (psychiatric rehabilitation philosophy)



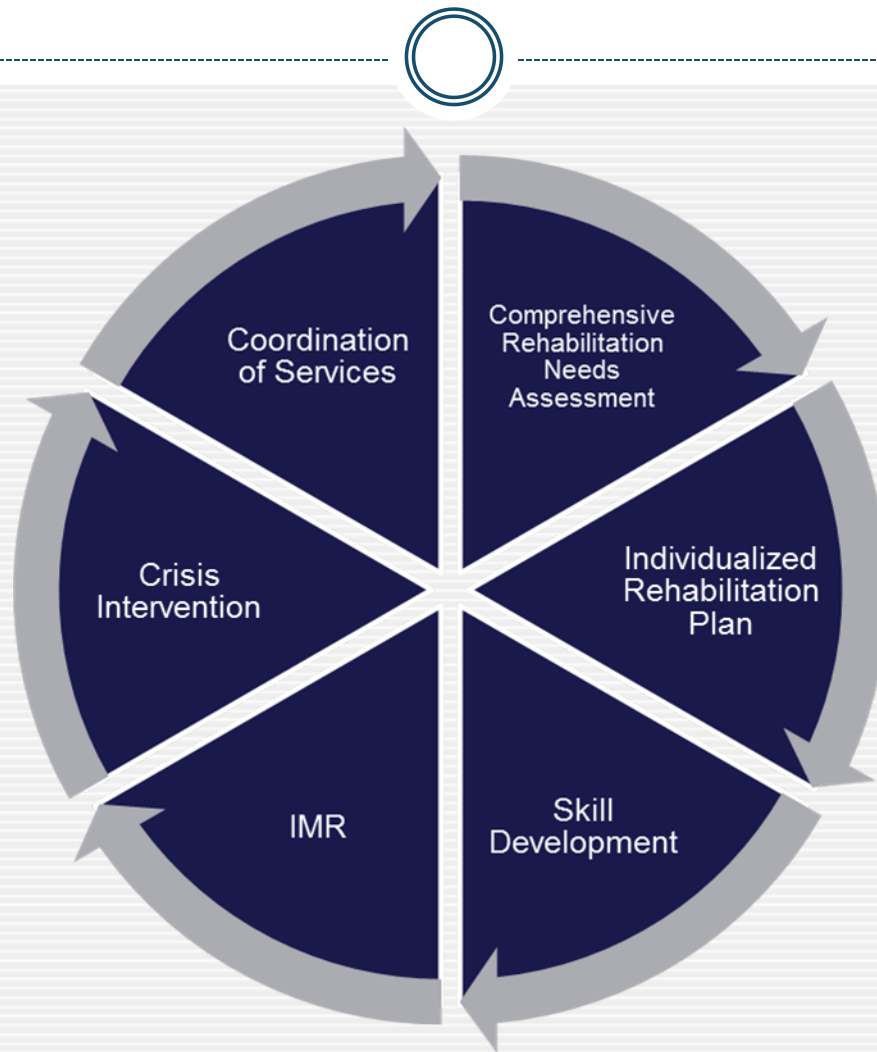
▶ Principles

- **Person centered**
 - Services are based on individual's desires, not the provider's set of choices
 - Focus is on individual's strengths
- **Goal-related skills training** – individual sets goals and collaborates with provider on what skills to learn
- **Uses natural and peer supports** – individual interacts with family, friends, and peers to assist recovery

▶ Values

- **Self-determined** – individual decides what services are desired
- **Recovery-oriented** – Planning is centered on improving health and wellness
- **Valued social roles** – As tenant, friend, co-worker
- **Normalized environments** – individual lives and socializes without stigma
- **Culturally diverse** – individual will receive culturally sensitive services using best practices

Service Components of CSS *(Provider Services)*



Community Support Services (CSS)



- Interim Management Entity (IME)
- Submission of IRP'S
- Prior Authorization
- Regulations

System Preparation for Change



- Training
 - Current workforce – services, documentation and supervision
 - Medicaid billing
- Agency assessment and analysis
- Rates
- Regulations
- CSS Webinar
- CRNA/IRP for prior authorization

Office of Licensing



N.J.A.C. 10:37B

Community Support Services for Adults with Serious Mental Illnesses Regulations

Promulgated August 15, 2016

Where can I find them?

<http://www.state.nj.us/humanservices/providers/rules/regs/>

Office of Licensing



Licenses

- All Supervised Housing Programs were issued an Initial Provisional license to provide Community Support Services
- License effective date began on August 15, 2016
 - This date corresponds with the promulgation of the regulations

Office of Licensing Inspections



The OOL will conduct a provisional
license upgrade inspection for all
Community Support Services Programs
by the end of FY2017

Office of Licensing Reminders



10:37B-2.3 Rehabilitation needs assessments

(b) The PA shall complete a written comprehensive rehabilitation needs assessment for each consumer by the 14th day of admission, every six months for the first year after the initial assessment, and annually thereafter.

Office of Licensing Reminders



10:37B-2.4 Individualized rehabilitation plan

(b) No later than 60 days after the consumer has been admitted, PA staff shall partner with the consumer to develop and implement an individualized rehabilitation plan.

Office of Licensing Reminders



The written comprehensive rehabilitation needs assessment shall include the valued life role.

.... an individually chosen adult role, desired by individuals and respected by society, such as worker, professional, employee, volunteer, student, spouse/partner, parent, or homemaker.

Office of Licensing Reminders



10:37B-3.1 Standard consumer service agreement for all consumers

(a) The PA shall develop and submit for approval to the Division prior to use a consumer service agreement that meets the specifications of this subchapter.

Office of Licensing Reminders



10:37B 4.3 (c)

Pursuant to the PA policy, an ongoing written record shall be maintained of all medication administration events and self-administration events in which PA staff verbally assisted the consumer.

Office of Licensing Reminders



10:37B-5.2(a, b, c)

A licensed clinician must complete the Comprehensive Rehabilitation Needs Assessment.

Please note that a master's level clinician who is unlicensed would not meet the requirement as specified in

10:37B-5.2(a, b, c)



Office of Licensing Inspections



The OOL will conduct a provisional
license upgrade inspection for all
Community Support Services Programs
by the end of FY2017

Department of Human Services Office Of
Licensing

609-633-6935



Community Support Services CSS



Deb Gravely

Harry Reyes

DMHAS.CSS@dhs.state.nj.us