

INSIDE WORKFORCE DEVELOPMENT AND OPPORTUNITY

MAR
2022

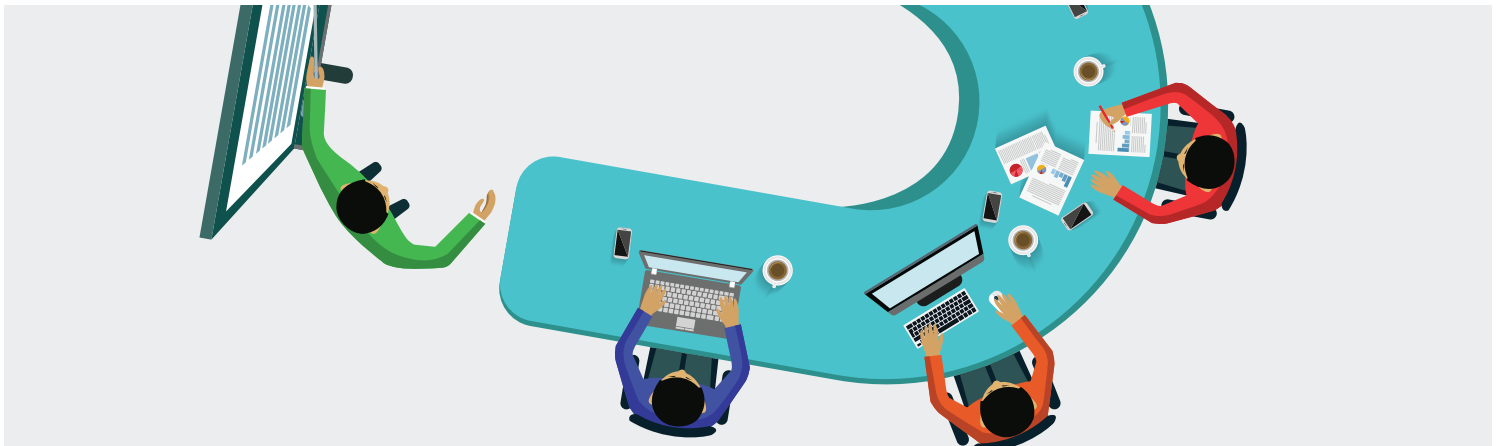


a newsletter that features NJDOL announcements, USDOL updates, policy refreshers, trainings, resources, and tools to workforce professionals who are providing strategic workforce development solutions to jobseekers and businesses.

ANNOUNCEMENTS



- Jobseekers may request career service support via this online form: <https://bit.ly/3qssSDr>. Website: nj.gov/labor/career-services/virtualonestops.shtml.
- Updated SETC Performance Dashboard (updated 02/11/2022) provides workforce performance data in a user-friendly visualization tool. State and local workforce data are included, based on federal WIOA reports. As resources allow, the dashboard may be expanded to include data on additional workforce programs. <https://app.powerbigov.us/view?r=eyJrljoiNmQ5MzY4NDEtM2EzZS00ZTRjLTlkZjctNDRjNDE2ZDM4NzY2liwidCI6IjUwNzZjM2QxLTM4MDItNGI5Zi1iMzZhLUwYTQxYmQ2NDJhNyJ9>
- SkillUp New Jersey: In November, NJDOL renewed our license with Metrix Learning for another year. Since the launch of SkillUp New Jersey in March 2021, we have had over 30,000 new registrants to the platform. We are looking forward to supporting more course completions and connections to industry credentials this year. You can connect to SkillUp New Jersey here: <http://nj.metrixlearning.com/landing.cfm>
- Regional Technical Assistance Lab – Statewide Lab
We would like to thank all local areas for attending the lab and office hours! We look forward to delivering more training in this format in the near future. Below are resources we encourage you to explore:
 - ▶ **Frequently Asked Questions – AOSOS Data Entry:**
We received several questions throughout the training that was recorded and is now answered in this FAQ document. We encourage local areas to review and follow-up with their TA Liaison if they have any additional follow-up questions. nj.gov/labor/wioa/documents/resources/AOSOSDataEntryFAQs.pdf
 - ▶ **View our videos about William Jean-Jacques:**
You can find the videos on our YouTube channel here: youtube.com/channel/UCPoTaed_Lei21g4xqgLaMFw.
 - ▶ **View the training recordings:** You can find the recordings of Session 1 (youtu.be/Cl-eTwko8CE) and Session 2 (youtu.be/yUL9ltj_8oc) on the YouTube channel.
 - ▶ **Test site to view William Jean-Jacques case:** If you would like to look at the AOSOS record, you must log in through the AOSOS test site, <https://osostest.dol.state.nj.us/osos.html>. You will only be able to access this if you are connected to the Garden State Network.



FEATURED CONTENT

- **Policy Refresher – Defining Cultural Barriers to Employment:** nj.gov/labor/wioa/documents/resources/CulturalBarrierstoEmployment_Feb22.pdf
- **Frequently Asked Questions – PY21 OJT Allocations and Mandatory Training Funds.** NJDOL has compiled the following FAQ in response to specific questions that local areas have posed regarding the recent NOA for On-the-Job Training (OJT), as well as the requirement to provide training funds to support NJDOL and GSETA's new training partnership. [nj.gov/labor/wioa/documents/resources/OJT%20Allocation%20and%20Training%20Partnership%20FAQ%20\(Feb2022\)%20\(002\).pdf](https://nj.gov/labor/wioa/documents/resources/OJT%20Allocation%20and%20Training%20Partnership%20FAQ%20(Feb2022)%20(002).pdf)
- **WIOA Title I Supportive Services Technical Assistance Guide.** This guide is to support the development of a system of supportive services that helps to support the successful outcomes of participants in Title I programs. WIOA specifies the provision of supportive services as a specific service category that can help to remove and address barriers to employment. This resource provides an overview of requirements and considerations for Local WDBs in developing supportive service strategies with One Stop and program partners. nj.gov/labor/wioa/forms_pdfs/WIOATitleITechnical%20AssistanceGuide.pdf
Please note, USDOL also released a Practitioners Guide to Supportive Services in October that you can find here: wdr.doleta.gov/directives/attach/TEN/TEN_12-21.pdf
- **Updated AOSOS Technical Guide for Title I Service Delivery.** The main change in the AOSOS Technical Guide is that this version offers more flexible guidance in entering services as multi-day services so long as there is engagement between a participant and counselor at least once a quarter which is recorded with a corresponding activity and comment in AOSOS. nj.gov/labor/wioa/forms_pdfs/AOSOSTechnical-Guide.pdf
- **MOU and IFA Tools. A new “Forms” section has been added to the Workforce Professional Resources section of NJ’s WIOA website.** Here you can find New Jersey’s MOU and IFA resources, including:
 - ▶ **MOU/IFA template:** nj.gov/labor/wioa/documents/resources/NJ%20MOU%20and%20IFA%20Template.docx
 - ▶ **One Stop’s Operating Budget Template:** nj.gov/labor/wioa/documents/resources/One-Stop%20Operating%20Budget%20Template.xlsx
 - ▶ **Local Area Program Service Grid Template:** nj.gov/labor/wioa/documents/resources/NEW%20JERSEY%20LOCAL%20AREA%20PROGRAMS%20SERVICES%20GRID.docx

POLICY UPDATES

- **Title I Placement, Exit, and Follow-up Procedures.** This policy provides guidance regarding follow-up services for WIOA Title I Adult, Dislocated Worker, and Youth participants. It provides specific information about (1) sequencing individualized career services related to job placement, (2) exit, and (3) follow-up support and services for Adult, Dislocated Worker, and Youth participants in Title I programs. nj.gov/labor/wioa/forms_pdfs/Worker%20Training.pdf
- **2022 Federal Poverty Guidelines.** 2022 Poverty Guidelines were published in the Federal Register and can be found here: [govinfo.gov/content/pkg/FR-2022-01-21/pdf/2022-01166.pdf](https://www.govinfo.gov/content/pkg/FR-2022-01-21/pdf/2022-01166.pdf). The Lower Living Standard Income Levels will follow in this spring.

RESOURCES AND TOOLS



YouTube channel with training videos

- ▶ WIOA Youth Program Elements Training Video: youtu.be/gj2fb6fJ6qE
- ▶ Youth Voice: William Jean-Jacques' Video: youtu.be/PVvuLyJiC6k
- ▶ Statewide Training Session 1: youtu.be/CI-eTwko8CE
- ▶ Statewide Training Session 2: youtu.be/yUL9ltj_8oc
- ▶ WIOA Title I Assessment and Plan Development Training Video: youtu.be/GBFbUa63n98
- ▶ WIOA Title I Plan Development and Service Engagement Training Video: youtu.be/br0jM-L8aq_0
- ▶ WIOA Title I Outcomes and Follow-Up Training Video: youtu.be/NxZnM0GRXtQ



[NJ.GOV/LABOR](https://nj.gov/labor)