

What's New & Upcoming in 2015



Jeff T. Behler

Regional Director, New York Regional Office
U.S. Census Bureau

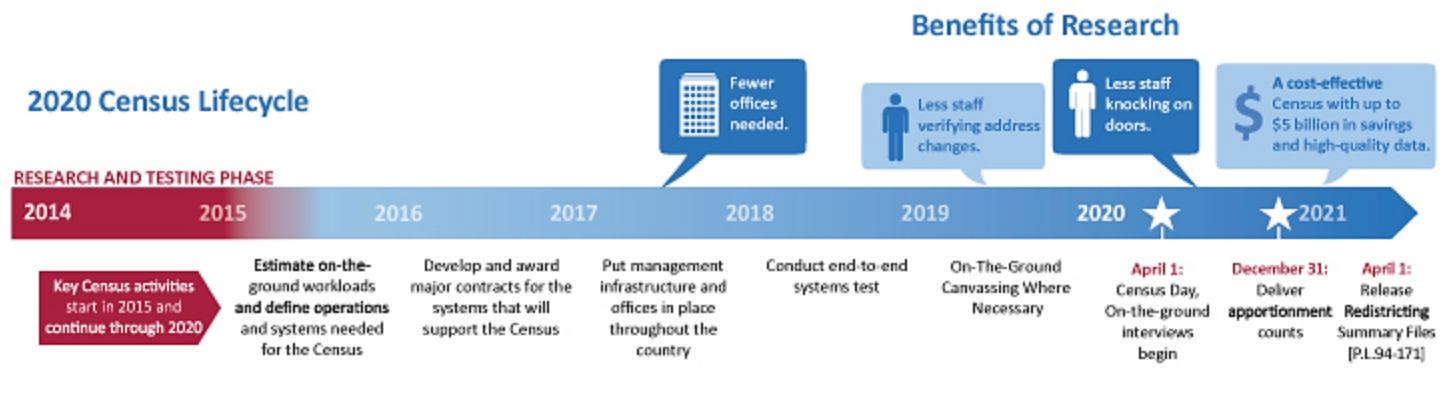
New Jersey State Data Center Affiliates Meeting
June 17, 2015

Overview

- 2020 Census Updates
 - 2015 Census Tests
 - 2020 Geographic Partnership Programs
- American Community Survey Updates
- American Fact Finder
- Economic Census Releases

2020 Census: Where Are We Today?

In the next census, we will be trying to reach an increasingly diverse and growing population of around 330 million people in more than 140 million housing units. **The Census Bureau is conducting research in order to inform key design decisions by the end of FY 2015.**



2020 Census Operational Research and Development Efforts

**Up to
\$5 Billion
in Savings
Through:**

**Reengineering Address
Canvassing**

Optimizing Self-Response

Utilizing Administrative Records

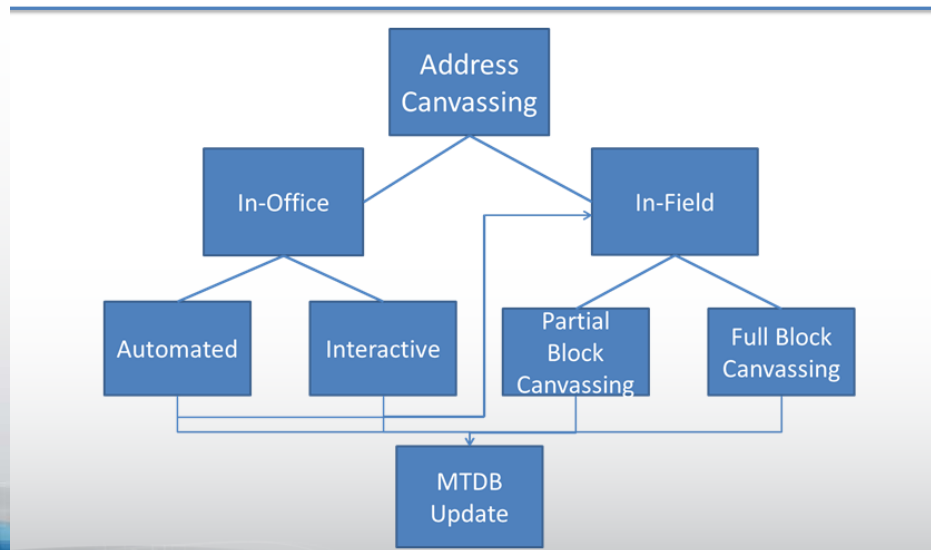
Reengineering Field Operations

2015 Testing Activities

Address Validation Test

- Informing the performance of the methods and models that will help us develop the address list
- Testing the use of aerial imagery for change detection
- Assisting in the delineation of the Reengineered Address Canvassing workloads
- Full-Block Canvass: 10,100 blocks
- Partial-Block Canvass: 600-1000 blocks

2020 Census Address Canvassing – Proposed View



2015 Testing Activities

2015 Optimizing Self-Response Test

- April 1, 2015 Census Day
- A site test conducted in the Savannah, Georgia area, including neighboring counties in South Carolina that constitute the media market for Savannah
- Continue testing pre-registration and “Non-ID” response to determine if we can optimize self and Internet response rates
 - Further refine the procedures for pre-registration in the Census
 - Study the feasibility of implementing real-time processing for the “Non-ID” response option
- Research how advertising, outreach, and promotion can engage and motivate respondents for action



2015 Testing Activities

2015 Census Test

- April 1, 2015 Census Day
- Like the 2014 Census Test, this will be a site test and conducted in portions of Maricopa County, Arizona – 165,000 housing units in sample
- Reengineer the roles, responsibilities, and infrastructure for the field
- Evaluate the feasibility of fully utilizing the advantages of technology, automation, and real-time data to transform the efficiency and effectiveness of data collection operations
- Automate training for enumerators and managers
- Test and implement routing and/or navigation
- Reengineer the approach to case management
- Continue to research uses of administrative records to reduce and manage fieldwork



2015 Testing Activities

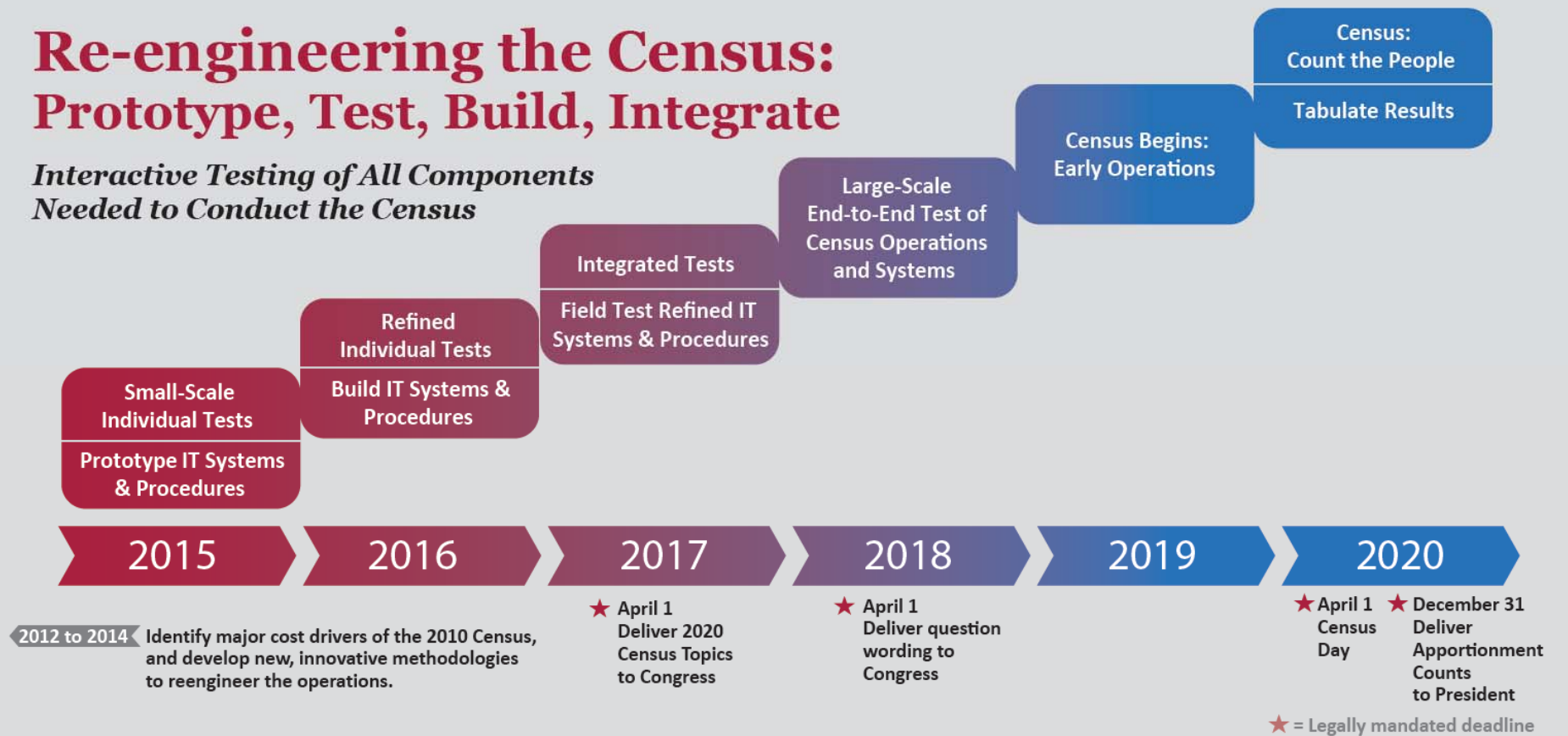
2015 National Content Test

- Will be a nationally representative sample, with oversampling of key sub-population groups – 1.2 million housing units in sample
- September 1, 2015 Census Day
- Conduct content testing
 - Race and Hispanic origin
 - Introduction of a Middle Eastern and North African category
 - Relationship
 - Introduction of same-sex relationship categories
 - Within-household coverage questions

2020 Census: What's Next?

Re-engineering the Census: Prototype, Test, Build, Integrate

*Interactive Testing of All Components
Needed to Conduct the Census*



2020 Geographic Partnership Programs

Redistricting Block Boundary Suggestion Project (BBSP)

- Materials available to states in December 2015 – Verification in December 2016

Redistricting Voting District Project (VTD)

- Materials available to states in December 2017 – Verification in December 2018

Local Update of Census Addresses (LUCA) Program

- Invitation Fall of 2017 – Materials available Winter 2018 – Feedback shipped Summer 2019

Participant Statistical Areas Program (PSAP) & Tribal Statistical Areas Program (TSAP)

- In planning – Materials available in December 2018

Boundary and Annexation Survey (BAS)

- Annual response in December and January of each year – Submit material through May

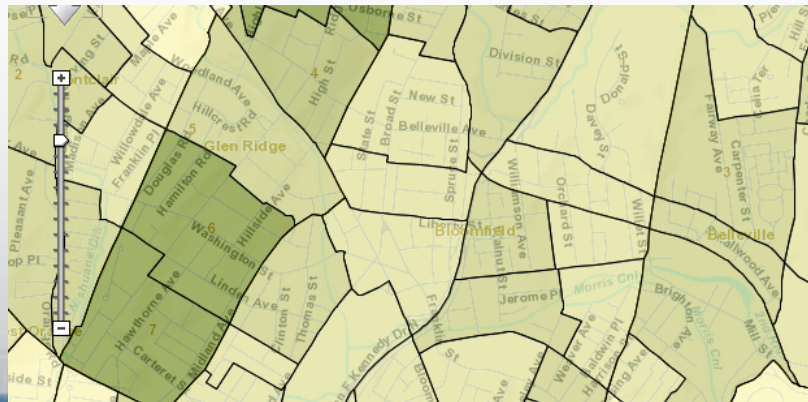
Boundary Validation Program (BVP)

- Highest Elected Official initial notification January 2020
- Final review of BAS 2020 May or June 2020

American Community Survey

Product Changes of Note

- Discontinuation of the ACS 3-Year Estimates
 - 2013 3-Year will be that last release – no 2014 3-Year release
 - Budgetary reasons
 - Rely on 5-Year Estimates for communities < 65,000
- Block Group Data Added to American Fact Finder
 - Previously only available through the ACS Summary File.
- Discontinuation of the ACS Summary File Retrieval Tool
 - Since Block Group Data now available in AFF, this was deemed unnecessary



American Community Survey

2014 -2015 Content Review

- Candidates for Removal
 - Business or Medical Office on Property (H6)
 - Field of Degree (P12)
 - Marital History (P21, P22, P23)
- Changes for 2016 ACS
 - Remove Business or Medical Office on Property (H6)
 - Remove Flush Toilet section of Plumbing Facilities Question (H8)
 - Mailout procedures

2014 Data Products Release Schedule

1-Year products – September 17, 2015

1-Year PUMS – October 22, 2015

5-Year products – December 10, 2015

5-Year PUMS – January 21, 2016

American Community Survey

Next ACS Content Review Update

- Webinar Tuesday, June 23 2015
 - <http://www.census.gov/acs/www/events/>

View the ACS Content Review Web Page

- Ongoing dialog and technical documentation
 - http://www.census.gov/acs/www/about_the_survey/acs_content_review/

ACS User Stories

- We want to hear from our users how you use our data
 - Email william.w.adams@census.gov
 - Email brunilda.sanchez@census.gov



American Fact Finder

AFF to be completely decommissioned by July, 2017*

- Original plan was to have AFF sunset by July, 2016
- From August, 2016 to July, 2017 AFF will run alongside replacement app*

AFF to be replaced by an As Yet Unnamed application

- Starting Nov-Dec 2015, password protected version for SDC testing*
 - Testing version for Microdata Analysis & Advanced Queries
- August 2016 – eventual replacement beta to run alongside AFF*

CEDSCI platform

- Cost savings through elimination of duplicate systems & processes
- Improved customer satisfaction through metadata standardization
- Mapping, visualization & mash-ups integrated into search & data

*Please be advised – all dates are subject to change

2012 Economic Census – Geographic Area Series

State Release Order

Group	State(s)	Group	State(s)
1	CO	10	DE, DC, MD, NJ, OH, PA, VA, WV
2	HI	11	KY, NC, TN
3	MT	12	IL, IN
4	AK	13	AL, AR, GA, LA, MS, SC
5	ME	14	IA, MO, NE, SD
6	AZ, NE	15	KS, MI, MN, ND, OK, WI
7	CA	16	NM, TX
8	ID, OR, UT, WA, WY	17	FL, US
9	CT, MA, NH NY, RI, VT		

2012 Economic Census Release Schedule by Program and Series

Publication Series	Report Title	Release Date Range
<u>Core Business Statistics</u>	Advance Report	March '14
	Enterprise Statistics	Feb '16
	Franchise	Feb '16
	Bridge	June '16
	Comparative	June '16
<u>Industry Series</u>	Construction	Oct '14 - Dec '14
	Manufacturing	June '14 - Dec '14
	Mining	Oct '14 - Dec '14
	Retail	July '14 - Jan '15
	Services	July '14 - Feb '15
	Utilities and Finance	June '14 - Feb '15
<u>Geographic Area Series</u>	Wholesale	July '14 - Feb '15
	Construction	Feb '15 - Oct '15
	Manufacturing	Dec '14 - Feb '15
	Mining	Feb '15 - April '15
	Retail	Feb '15 - Oct '15
	Services	May '15 - Dec '15
	Utilities and Finance	Feb '15 - Nov '15
Wholesale	Feb '15 - Oct '15	

▼ New Jersey

Note: All links in this table will lead to the search results page in AFF. Once in AFF, simply click on the table title to view. The table will appear with its default parameters. To add more items, return to the search results and use the menus on the left hand side of the page. For more information on how to use AFF, visit the [AFF help](#) section.

Release Date	Data	Link to Data
31-MAR-15	Construction: Geographic Area Series, 2012: New Jersey	Link to AFF
27-JAN-15	Manufacturing: Geographic Area Series, 2012: New Jersey	Link to AFF

2012 Economic Census – Geographic Area Series

New Places

- 2007 EC cutoff: 5,000+ Pop or Jobs; Now 2,500+
- Results in 89 New Places for NJ

2012 Economic Census

Economic Place Changes from 2007 to 2012 for: **New Jersey**

Added Places Continued

COUNTY Code	TITLE	PLACE Code	TITLE
027	Morris County	06640	Boonton township
		12580	Chester borough
		29700	Harding township
		46860	Mine Hill township
		48480	Mountain Lakes borough
		50130	Netcong borough
		63300	Riverdale borough
		75890	Victory Gardens borough
029	Ocean County	37770	Lakehurst borough
		41250	Long Beach township
		66450	Seaside Heights borough
		69510	South Toms River borough
		74210	Tuckerton borough
031	Passaic County	82423	Woodland Park borough

Dropped Places

COUNTY Code	TITLE	PLACE Code	TITLE
003	Bergen County	98003	Balance of Bergen County
021	Mercer County	77210	Washington township (Mercer County)
		98021	Balance of Mercer County
023	Middlesex County	98023	Balance of Middlesex County
027	Morris County	98027	Balance of Morris County
031	Passaic County	79820	West Paterson borough
039	Union County	98039	Balance of Union County

Summary Information:

No. Places in 2007:	408
No. Places Added for 2012:	95
No. Places Dropped for 2012:	7
No. Places in 2012:	496

2012 Economic Census – Geographic Area Series

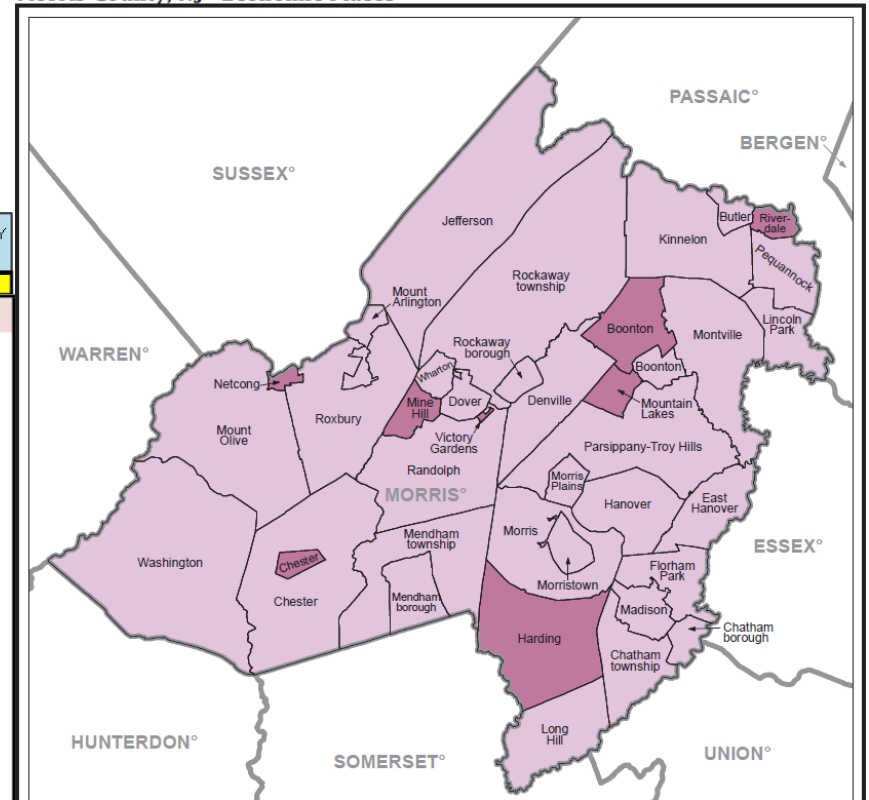
Graphic and Tabular Representations

- Maps & tables of coverage
- Metro area & place representation

2012 vs. 2007 Metro Areas and Their County Components - Master

TITLE	Notes	CSA code	MSA code	MD code	ST code	COUNTY code
Combined Statistical Areas and Their Component Metro and Micro Areas and Counties						
Philadelphia-Reading-Camden, PA-NJ-DE-MD CSA	2007 Combined Statistical Area, with three 2007 Metro Areas added and the Metro Divisions reconfigured	428	00000	00000	00	
Atlantic City-Hammonton, NJ Metro Area		428	12100	99999	34	
Atlantic County	Not in a CSA in 2007	428	12100	99999	34	001
Dover, DE Metro Area		428	20100	99999	10	
Kent County	Not in a CSA in 2007	428	20100	99999	10	001
Ocean City, NJ Metro Area		428	36140	99999	34	
Cape May County	Not in a CSA in 2007	428	36140	99999	34	009
Philadelphia-Camden-Wilmington, PA-NJ-DE-MD Metro Area		428	37980	00000	00	
Camden, NJ Metro Division		428	37980	15804	34	
Burlington County		428	37980	15804	34	005
Camden County		428	37980	15804	34	007
Gloucester County		428	37980	15804	34	015
Montgomery County-Bucks County-Chester County, PA Metro Division		428	37980	33874	42	
Bucks County	In MD 37964 in 2007	428	37980	33874	42	017
Chester County	In MD 37964 in 2007	428	37980	33874	42	029
Montgomery County	In MD 37964 in 2007	428	37980	33874	42	091
Philadelphia, PA Metro Division		428	37980	37964	42	
Delaware County		428	37980	37964	42	045
Philadelphia County		428	37980	37964	42	101
Wilmington, DE-MD-NJ Metro Division		428	37980	48864	00	
New Castle County, DE		428	37980	48864	10	003
Cecil County, MD		428	37980	48864	24	015
Salem County, NJ		428	37980	48864	34	033
Reading, PA Metro Area		428	39740	99999	42	
Berks County		428	39740	99999	42	011
Vineland-Bridgeton, NJ Metro Area		428	47220	99999	34	
Cumberland County		428	47220	99999	34	011

Morris County, NJ - Economic Places



Contact Information



U.S. Census Bureau –
New York Regional Office
Data Dissemination Branch
(212) 584-3440

http://www.census.gov/regions/new_york/