

What's New & Upcoming in 2016



Jeff T. Behler

Regional Director, New York Regional Office
U.S. Census Bureau

New Jersey State Data Center Affiliates Meeting
June 15, 2016

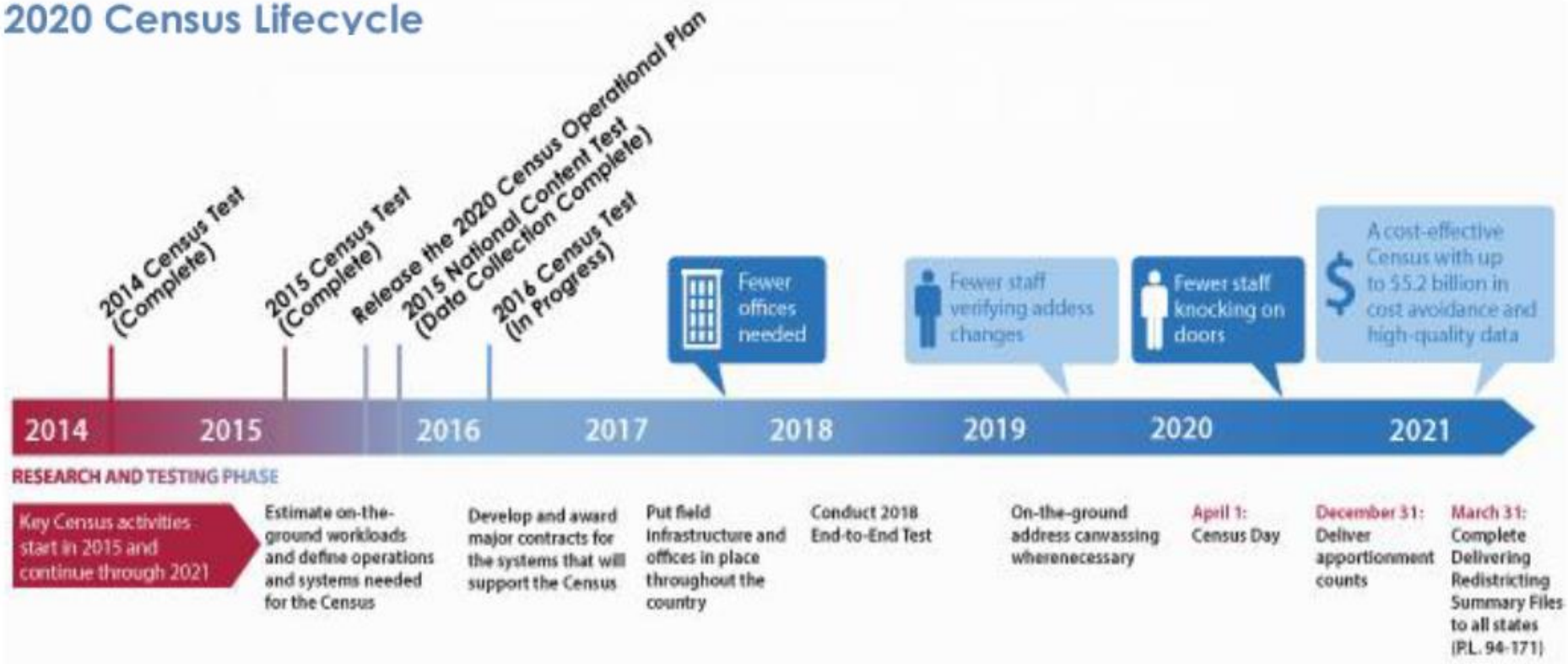
Overview

- 2020 Census Updates
 - 2020 Census Readiness
 - 2020 Geographic Partnership Programs
- American Community Survey Updates
 - 2016 Decisions
 - Data Products Redesign
 - Agility in Action – Key Action Areas
- CEDSCI/American Fact Finder Updates
 - CEDSCI Alpha Testing
 - AFF Mapping

2020 Census Readiness

Where Are We Today?

2020 Census Lifecycle



2020 Census Readiness 2016 Census Test

- Purpose: Refine technologies and methods associated with Self-Response and Nonresponse Followup operations
- April 1, 2016 Census Day
- A site test in parts of Los Angeles County, CA and Harris County, TX

Language diversity

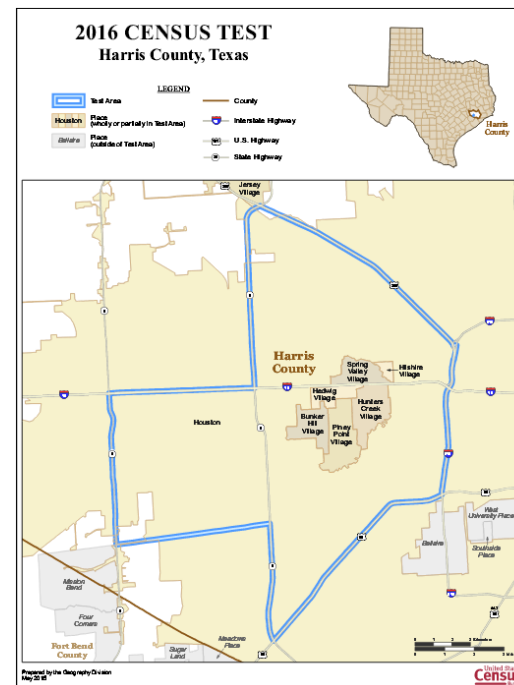
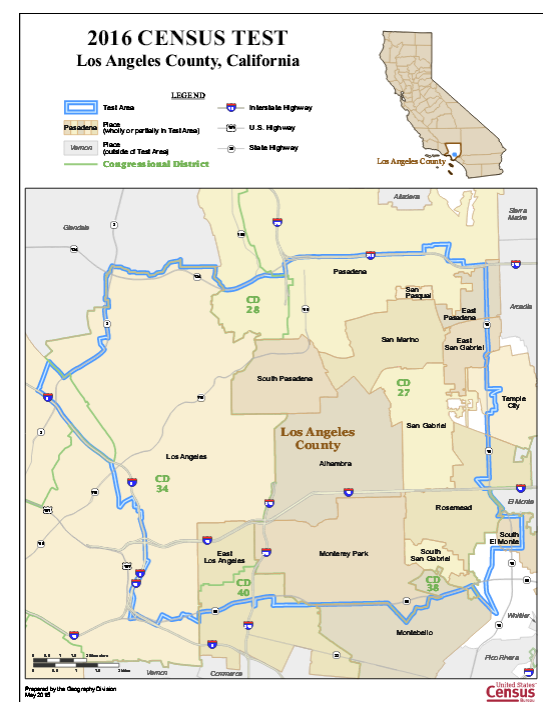
Demographic diversity

High vacancy rates

Varying level of Internet usage

Multiple locations across different time zones

Approximately 225,000 housing units in each test area



2020 Census Readiness

2016 Address Canvassing Test

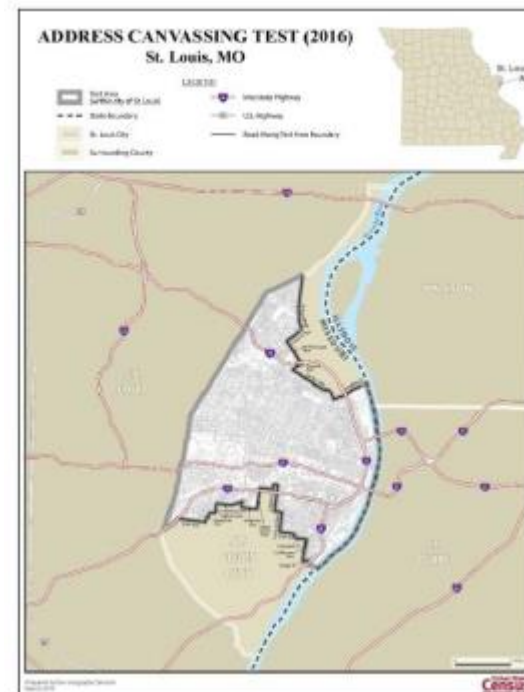
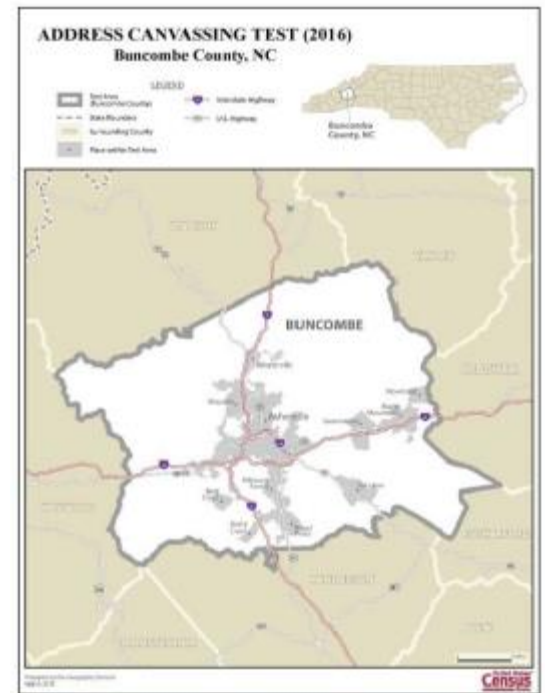
- Fall, 2016
- Two contiguous sites, approximately 12,600 blocks in total

One site is a mix of urban, suburban and rural territories

- Buncombe Co, NC

One site is a principal city of a metropolitan statistical area

- St. Louis City, MO



2020 Census Readiness

2017 Census Tests

- 2017 Census Test - April 1, 2017
Census Day

Colville IR, WA and Standing Rock IR, ND-SD

A site test on tribal lands and in areas with Update Enumerate style addresses
Additional testing through a nationwide self-response test

- 2017 Puerto Rico Census Test - April 1, 2017 Census Day
Cluster of three *municipios*, Carolina, Loíza & Trujillo Alto



2020 Census Readiness

2018 Census End-to-End Test

- April 1, 2018 Census Day

- Purpose

Test and validate 2020 Census operations, procedures, systems, and field infrastructure together to insure proper integration and conformance with functional and non-functional requirements

Produce a prototype of geographic and data products

2020 Census Readiness

Device as a Service vs. Bring Your Own Device

- Device as a Service

 - Used in 2010 Census

 - Less than optimum results

 - Standardization of hardware & software



- Bring Your Own Device (BYOD)

 - Hardware cost savings

 - Enumerator familiarity with device

 - Wide range of providers & operating systems
create logistical problems



2020 Geographic Partnership Programs

Status of 2020 Programs

- Redistricting Data Program (RDP)
 - 2016 Block Boundary Suggestion Program
- Boundary & Annexation Survey (BAS)
 - Conducted Annually Through 2021
- Local Update of Census Addresses (LUCA)
 - Invitation – mid 2017, Partner Review – early 2018
- Participant Statistical Areas Program (PSAP)
 - Materials available late 2018, Submissions due mid 2019

The 2020 Census

Key Upcoming Activities*

<p>2016 Census Test (Census Day – 4/1)</p> <p>2016 Address Canvassing Test</p> <p>Boundary and Annexation Survey Governmental entities receive their annual invitation to update their legal boundaries</p> <p>Award of Census Questionnaire Assistance Contract</p> <p>Award of Integrated Communications Contract</p> <p>2016*</p>	<p>2017 Census Test (Census Day – 4/1)</p> <p>Topics to Congress by March 31, 2017</p> <p>Local Update of Census Addresses Invitations sent to governmental entities to participate in review of our Master Address File and is complete in 2018</p> <p>2017</p>	<p>2018 End-to-End Test (Census Day – 4/1)</p> <p>Question Wording to Congress by March 31, 2018**</p> <p>2018</p>
<p>Partnership Program Launch of the partnership program</p> <p>Complete Count Committees Formation of committee's should be complete</p> <p>2019</p>	<p>Advertising Begins in early 2020</p> <p>Census Day – April 1, 2020</p> <p>Nonresponse Follow-up Begins in late April and continues until late June/early July</p> <p>Apportionment Counts to the President by December 31, 2020</p> <p>2020</p>	<p>Redistricting Counts to the States by March 31, 2021</p> <p>2021</p>

*Topic and question wording for the American Community Survey will be delivered along with the topics and question wording for the 2020 Census

Detailed 2020 Census Operational Plan available at:

<http://www2.census.gov/programs-surveys/decennial/2020/program-management/planning-docs/2020-oper-plan.pdf>

American Community Survey

2016 Decisions

- Changes resulting from the 2014 - 2015 ACS Content Review
 - Remove the question concerning business or medical office on property
 - All other questions were validated
- Changes resulting from recent survey improvement research
 - Remove the question about flush toilets
 - Reword the questions on computer and internet usage
 - Streamline our mailing procedures

American Community Survey

Data Products Redesign

- Current initiatives drive opportunity for a potential redesign of current data products
- Plan for a ground up review of all aspects of ACS dissemination
- Must include input from internal and external stakeholders

American Community Survey

Data Products Redesign Components

- Overall data product package/redesign
 - Short term & long term data product focus
- Thresholds and filtering
 - Review current and evaluate potential changes
- Dissemination methods; work closely with the Center for Enterprise Dissemination Services and Customer Innovation (CEDSCI)
- 2020 Decennial Census Tabulation Testing

American Community Survey

Data Products Redesign Group

- Contract with the Population Reference Bureau
- Forming an informal, non-advisory group
- Core group, about 16-20 external people
- Gather feedback on ACS products (tables, suppression, filtering, etc.) new dissemination tools
- Novice and experienced ACS data users

American Community Survey

Agility in Action – Key Action Areas

- Using administrative records
- Reducing follow-up contact attempts
- Testing messaging in mail materials
- Modifying survey questions
- Asking less frequently or of fewer respondents

<http://www.census.gov/programs-surveys/acs/operations-and-administration/2015-16-survey-enhancements.html>

Agility in Action: A Snapshot of Enhancements
to the American Community Survey

U.S. Census Bureau
American Community Survey Office

Revised August 2015



American Community Survey

Agility in Action – Key Action Areas (cont.)

- Leveraging a communications strategy
- Advocating for respondents
- Communicating with respondents
- Promoting awareness of data uses
- Engaging subject-matter experts

Agility in Action: A Snapshot of Enhancements to the American Community Survey

U.S. Census Bureau
American Community Survey Office

Revised August 2015



<http://www.census.gov/programs-surveys/acs/operations-and-administration/2015-16-survey-enhancements.html>

American Community Survey

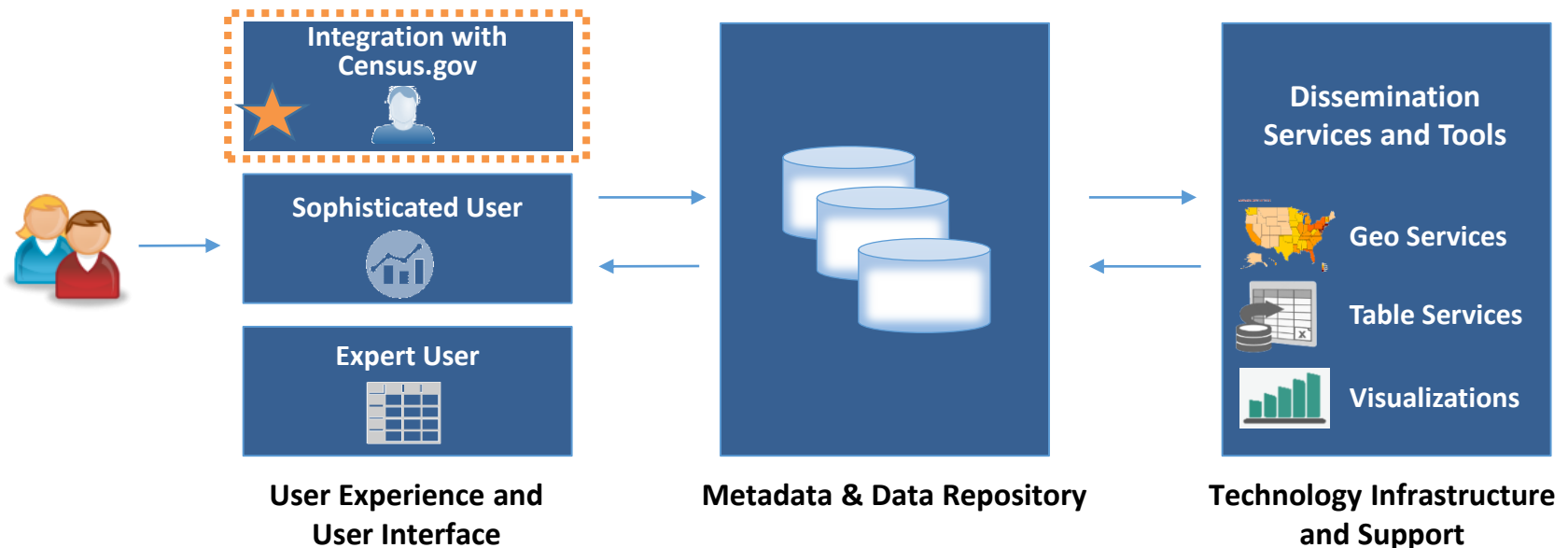
2015 ACS Release Schedule

- 2015 ACS 1-Year Estimates
Release date – September 15, 2016
- 2015 ACS 5-Year Estimates
Release date – December 8, 2016
- 2014 ACS 1-Year Supplemental Estimates
& ACS 5-Year Replicate Estimates
Release date – July 21, 2016

CEDSCI

What is CEDSCI?

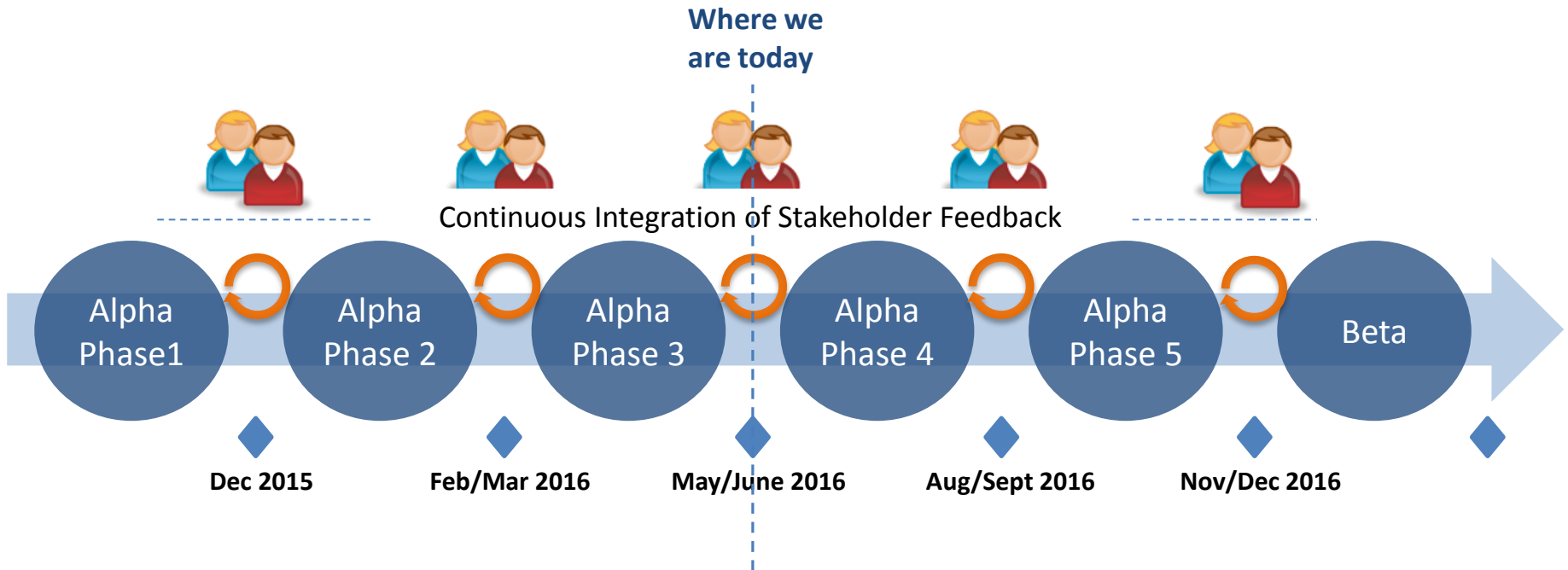
CEDSCI will establish a modernized technology platform that leverages existing innovations to provide a set of shared data dissemination services that enable consumers to do more with the massive amounts of valuable content we publish year round.



 CEDSCI Initial Release

CEDSCI

Alpha Testing



CEDSCI

Alpha Phase 1 & 2 Key Features and Data

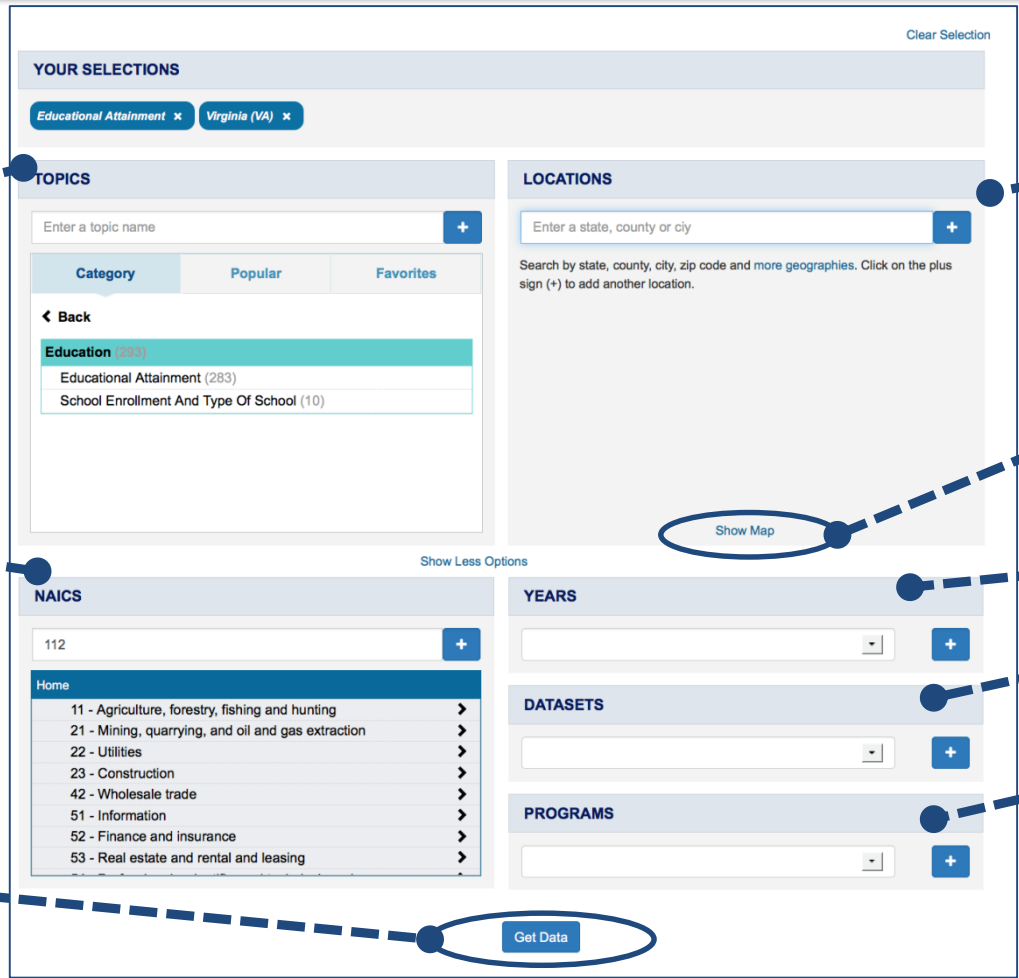
- Data Explorer
- Map as a Selection
- Faceted Filtering
- Table View
- Multi-select Geographies
- ACS 1, 3, & 5 Year Estimates
- Econ Census – EWKS (2012)
- County Business Patterns
- Non Employer Statistics
- SF1 2010

The image displays several screenshots of the CEDSCI web application interface. The top screenshot shows the main dashboard with navigation tabs for Topics, Geography, Library, Data, and Surveys/Programs. It features a 'Population Clock' and a 'Quick Facts' section. Below this is a 'YOUR SELECTIONS' panel with filters for Topics (Language Spoken At Home, Migration, Poverty, Race), Locations (County, City, State), and Years (2014). A map of Virginia is shown with a red outline indicating a selected geographic area. The bottom screenshot shows the 'Data Explorer' interface with a search results table and a 'Margin of Error' table.

Year	Delaware Estimate	District of Columbia Estimate	Arizona Estimate	North Carolina Estimate	Pennsylvania Estimate	Virginia Estimate
Under 18	193,005	88,030	1,205,573	2,165,777	2,040,235	1,774,059
Living with two parents	32,029	27,587	158,953	324,068	478,700	254,092
Both parents follow	6,157	1,554	34,857	137,350	125,632	72,334
One father and one nonresident parent	5,074	530	17,135	85,774	94,501	45,195
Living with one parent	24,855	1,140	14,713	60,289	24,173	22,949
Female parent	23,872	25,593	124,010	305,532	352,909	181,747
Male parent	20,053	22,432	102,951	310,831	323,215	180,139
Foreign born parent	3,239	2,151	21,355	55,701	29,754	21,008
18 to 24	41,281	18,810	208,931	510,841	530,047	323,278
Living with two parents	17,900	5,172	95,058	279,235	283,162	176,541
Both parents follow	11,549	1,508	50,187	196,138	234,350	116,168
Both parents foreign born	5,107	3,259	39,937	62,734	34,560	47,700
Living with one parent	1,324	947	5,094	20,363	16,228	12,817
Female parent	23,281	13,007	113,194	231,358	246,842	148,870
Male parent	20,544	11,455	38,955	201,644	228,834	125,978
Foreign born parent	2,337	2,172	24,001	29,714	19,209	22,038
25 and over	119,715	51,839	918,084	1,130,588	1,631,533	1,190,888
Living with two parents	91,417	32,350	703,328	921,870	1,345,914	972,870
Both parents follow	76,237	21,834	628,459	802,099	1,030,982	757,828
Both parents foreign born	9,801	5,371	114,510	61,985	79,467	130,071
Living with one parent	6,378	5,095	63,328	87,000	69,595	88,373
Female parent	28,283	19,139	214,697	208,191	285,880	223,461
Male parent	20,205	16,453	184,011	195,259	258,943	190,654
Foreign born parent	2,078	2,669	30,869	12,822	19,937	28,807

CEDSCI Data Explorer Interface

 Explore The Data



The interface is titled "YOUR SELECTIONS" and includes a "Clear Selection" link. It features several filter sections: "TOPICS" with a search box and a list of categories (Education, Educational Attainment, School Enrollment); "LOCATIONS" with a search box and a "Show Map" button; "NAICS" with a search box and a list of codes (11-53); "YEARS" with a search box; "DATASETS" with a search box; and "PROGRAMS" with a search box. A "Get Data" button is located at the bottom center.

Search by Topics

Search by Location

Search by NAICS Codes

Show/Hide Map

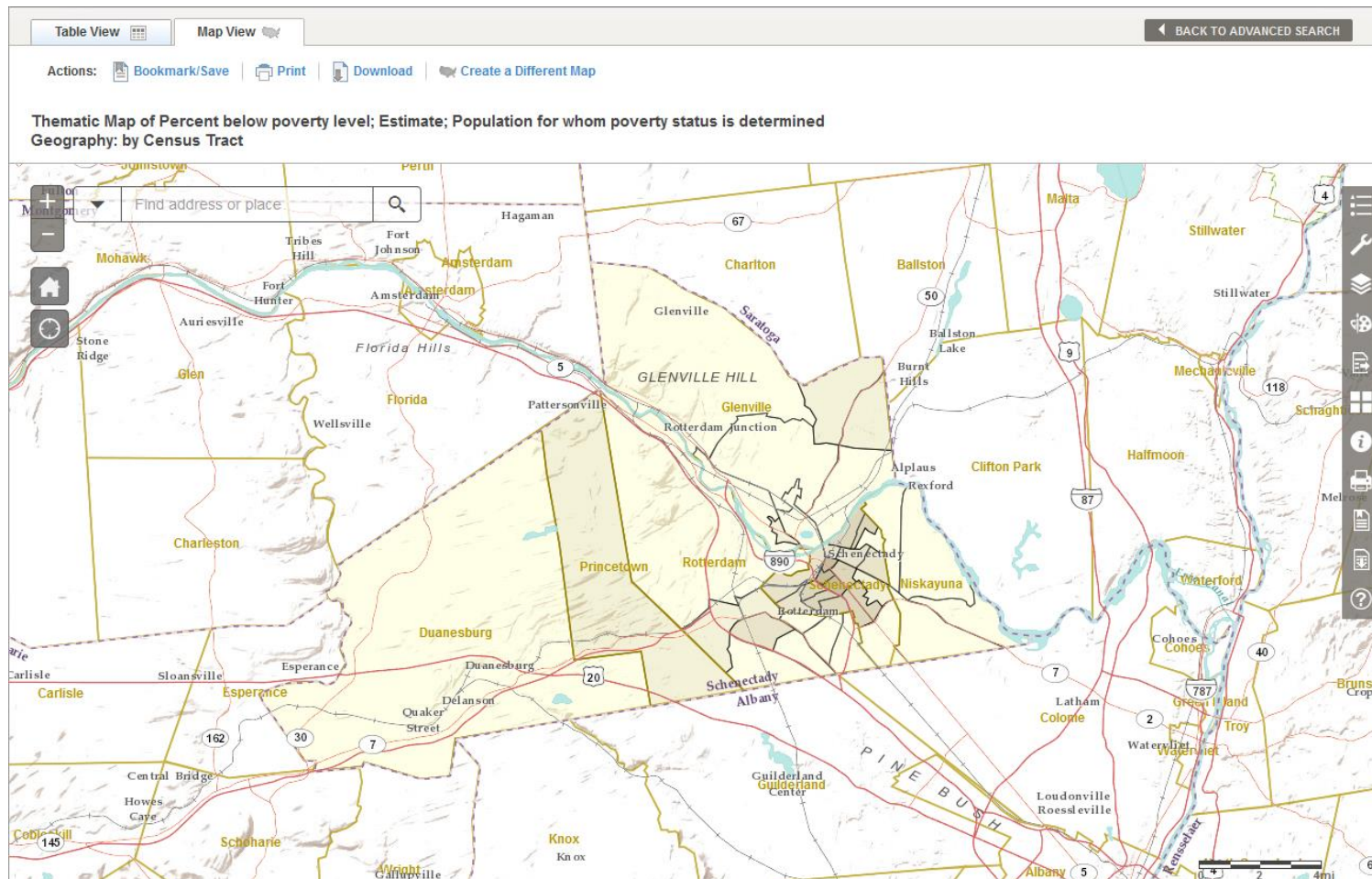
Search by Year

Get table results that match selected facets

Search by Dataset

Search by Program Areas

American Fact Finder Mapping Interface



Contact Information



U.S. Census Bureau –
New York Regional Office
Data Dissemination Branch
(212) 584-3440

http://www.census.gov/regions/new_york/