

Hunterdon County

Division of Economic and Demographic Research

Office of Research & Information

New Jersey Department of Labor and Workforce Development

February 2026

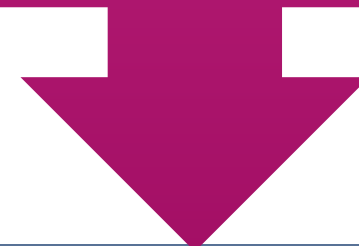


TABLE OF CONTENTS

| | |
|--|-----------|
| Who Are We? | 3 |
| Purpose and Highlights | 4 |
| Demographic and Housing Characteristics | 5 |
| Economy | 12 |
| Job Postings | 25 |
| Takeaways | 38 |
| 2025-2026 NJDOL Publications | 42 |
| Join Our List | 43 |

**WHO ARE
WE?**

New Jersey Department of Labor
Office of Research and Information



Division of Economic and Demographic
Research

SDC

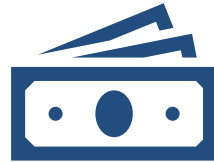
BLS

LMI

The purpose of this report is to highlight the key demographic and economic trends in the county



Hunterdon County has a **higher median age and a lesser share of foreign-born residents** than New Jersey.



Hunterdon County's real GDP ranks 16th among all New Jersey counties.



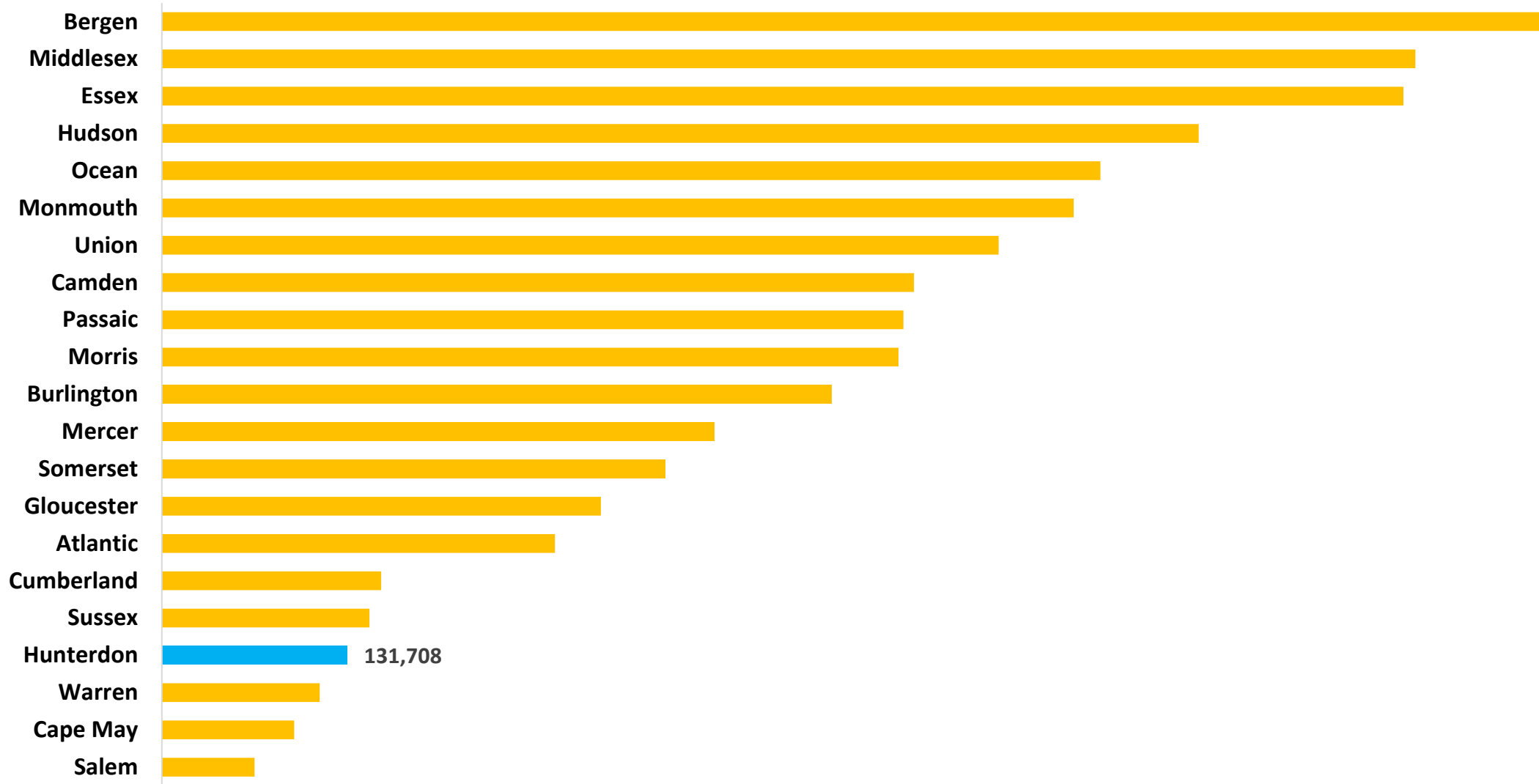
The **top** occupations in demand include Registered Nurses, Software Developers, and Home Health and Personal Care Aides.



DEMOGRAPHIC AND HOUSING CHARACTERISTICS

Hunterdon County's population was 131,708 in 2024.

Population Estimates by County in New Jersey, 2024



Hunterdon County has a higher median age and a smaller share of foreign-born residents than New Jersey.

Demographic Characteristics

| Indicator | Hunterdon County | New Jersey |
|---|------------------|------------|
| Median Age | 46.3 | 40.4 |
| % of Older Population (65+) | 21.8% | 18.0% |
| % of Language Other Than English Spoken at Home | 13.7% | 34.3% |
| % of Foreign-Born Population | 10.0% | 25.0% |
| % of Hispanic or Latino (of Any Race) | 10.1% | 23.5% |

The share of Hunterdon County residents with a bachelor's degree or higher is 13.2 percentage points above the state.

Educational Attainment (Population 25 Years and Older)

| Indicator | Hunterdon County | New Jersey |
|----------------------------------|------------------|------------|
| High School or Equivalent Degree | 18.9% | 24.7% |
| Some College, No Degree | 14.2% | 14.5% |
| Associate's Degree | 6.2% | 6.6% |
| Bachelor's Degree or Higher | 57.7% | 44.5% |
| High School Degree or Higher | 97.0% | 90.3% |

Hunterdon County has a higher median household income and a lower poverty rate compared to the state.

Income & Poverty

| Indicator | Hunterdon County | New Jersey |
|-------------------------|------------------|------------|
| Median Household Income | \$136,901 | \$104,294 |
| % of Poverty | 4.2% | 9.2% |

Note: Median Household Income in the Past 12 Months (in 2023 Inflation-Adjusted Dollars)

Hunterdon County residents pay lower rent and have a higher homeownership rate compared to the state.

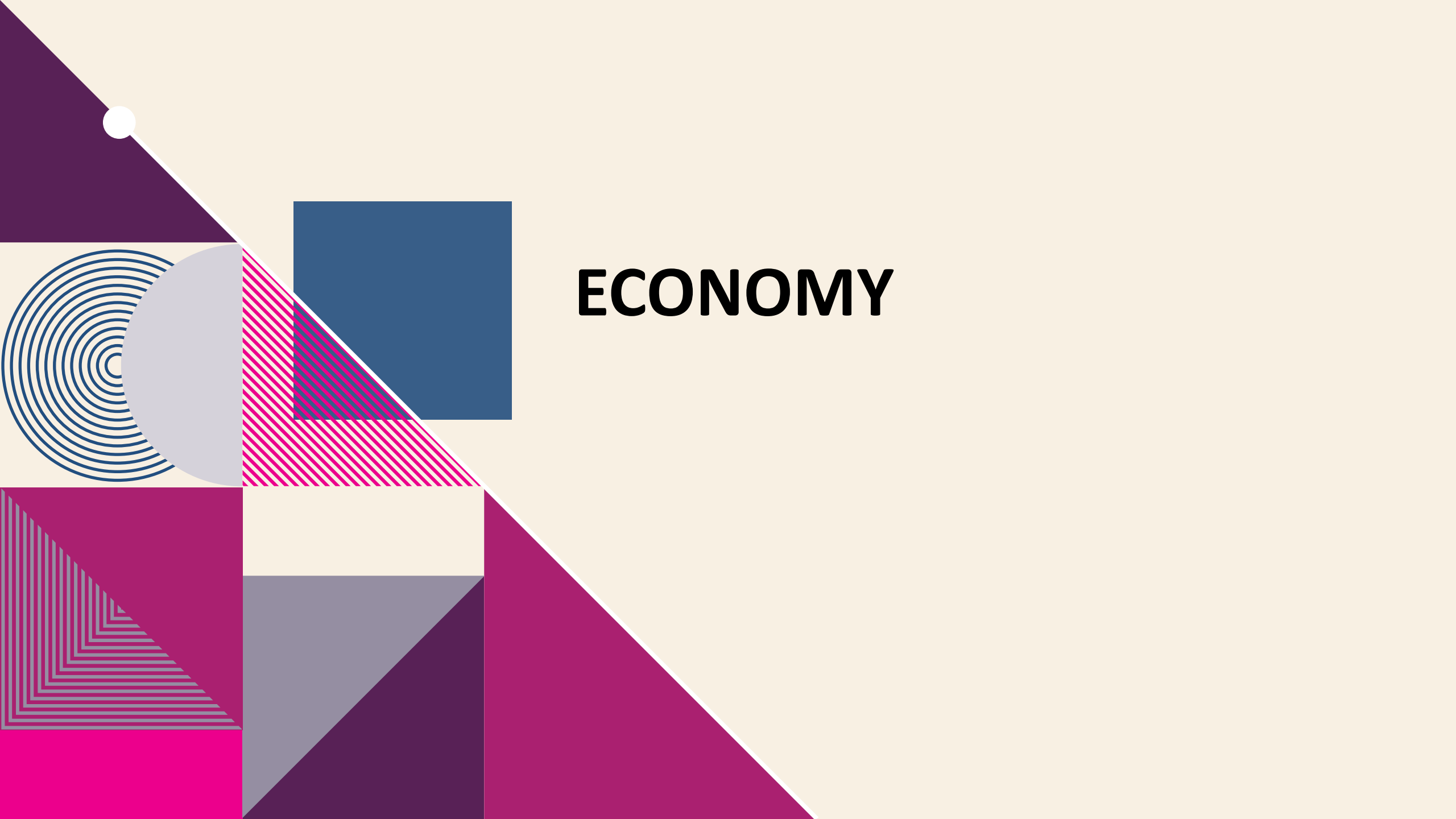
Housing Characteristics

| Indicator | Hunterdon County | New Jersey |
|--|------------------|------------|
| Total Households | 51,645 | 3,543,944 |
| Median Gross Rent | \$1,780 | \$1,800 |
| Homeownership Rate | 82.2% | 63.9% |
| % of Housing Value of Owner Occupied (\geq \$300,000) | 89.5% | 80.7% |

Hunterdon County residents have longer commute times, and a higher percentage of remote workers compared to the state average.

Commuting Characteristics

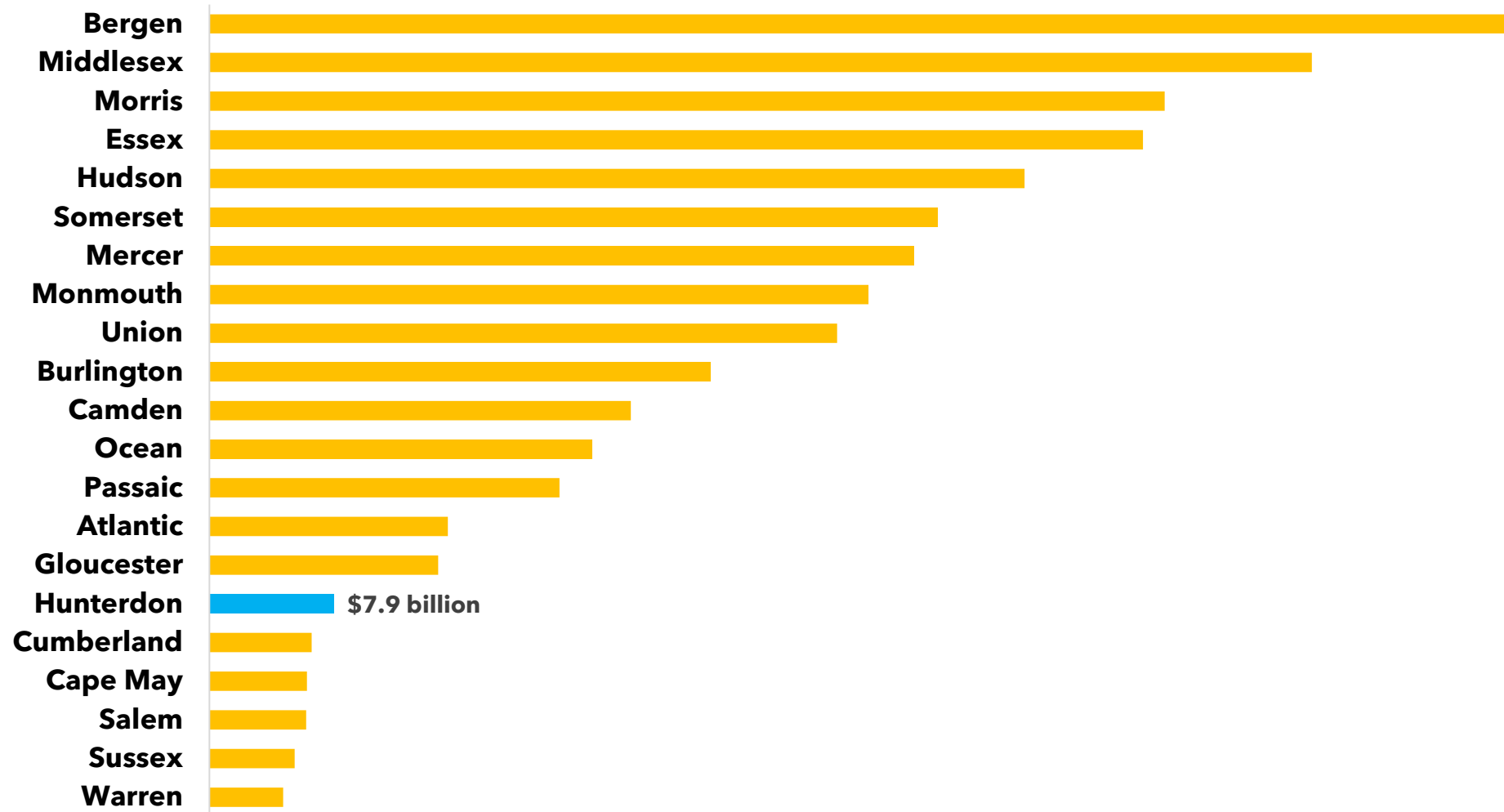
| Indicator | Hunterdon County | New Jersey |
|--|------------------|------------|
| Average Travel Time to Work (in Minutes) | 33.7 | 31.9 |
| % of Public Transportation | 1.8% | 9.7% |
| % of Working From Home | 19.3% | 13.5% |



ECONOMY

In 2024, Hunterdon County's real GDP was \$7.9 billion, ranking 16th among all New Jersey counties.

Real Gross Domestic Product (GDP) by County in New Jersey, 2024





Establishments and Employment

Hunterdon County

Source: Quarterly Census of Employment and Wages (QCEW) program, 2024 Annual Averages

The QCEW program produces quarterly and annual data on the number of establishments, total employment, and wages for workers covered by New Jersey unemployment insurance (UI) laws, as well as federal employees under the Unemployment Compensation for Federal Employees (UCFE) program. This data is published at various geographical and industry levels.

14.3% of Hunterdon County establishments are in health care and social assistance.

Hunterdon County Establishments, Ranked by Percent of the Total Establishments Private Ownerships

| Industry | Total Number of Establishments | Total Number of Employees | % of Total Establishments |
|--|--------------------------------|---------------------------|---------------------------|
| Health care and social assistance | 561 | 6,377 | 14.3% |
| Professional and technical services | 550 | 3,734 | 14.0% |
| Construction | 440 | 3,531 | 11.2% |
| Retail trade | 392 | 5,954 | 10.0% |
| Other services, except public administra | 348 | 2,102 | 8.8% |
| Administrative and waste services | 296 | 2,009 | 7.5% |
| Accommodation and food services | 285 | 3,497 | 7.2% |
| Manufacturing | 146 | 2,931 | 3.7% |
| Wholesale trade | 144 | 1,403 | 3.7% |
| Agriculture, forestry, fishing and hunting | 84 | 1,095 | 2.1% |
| Real estate and rental and leasing | 82 | 299 | 2.1% |
| Arts, entertainment, and recreation" | 76 | 1,126 | 1.9% |
| Transportation and warehousing | 58 | 812 | 1.5% |
| Educational services | 56 | 852 | 1.4% |
| Information | 54 | 302 | 1.4% |

Note: Full list of establishments in Hunterdon County is available in [Appendix](#).

In Hunterdon County, private professional and technical services and construction have the highest employment share differences compared to the state average.

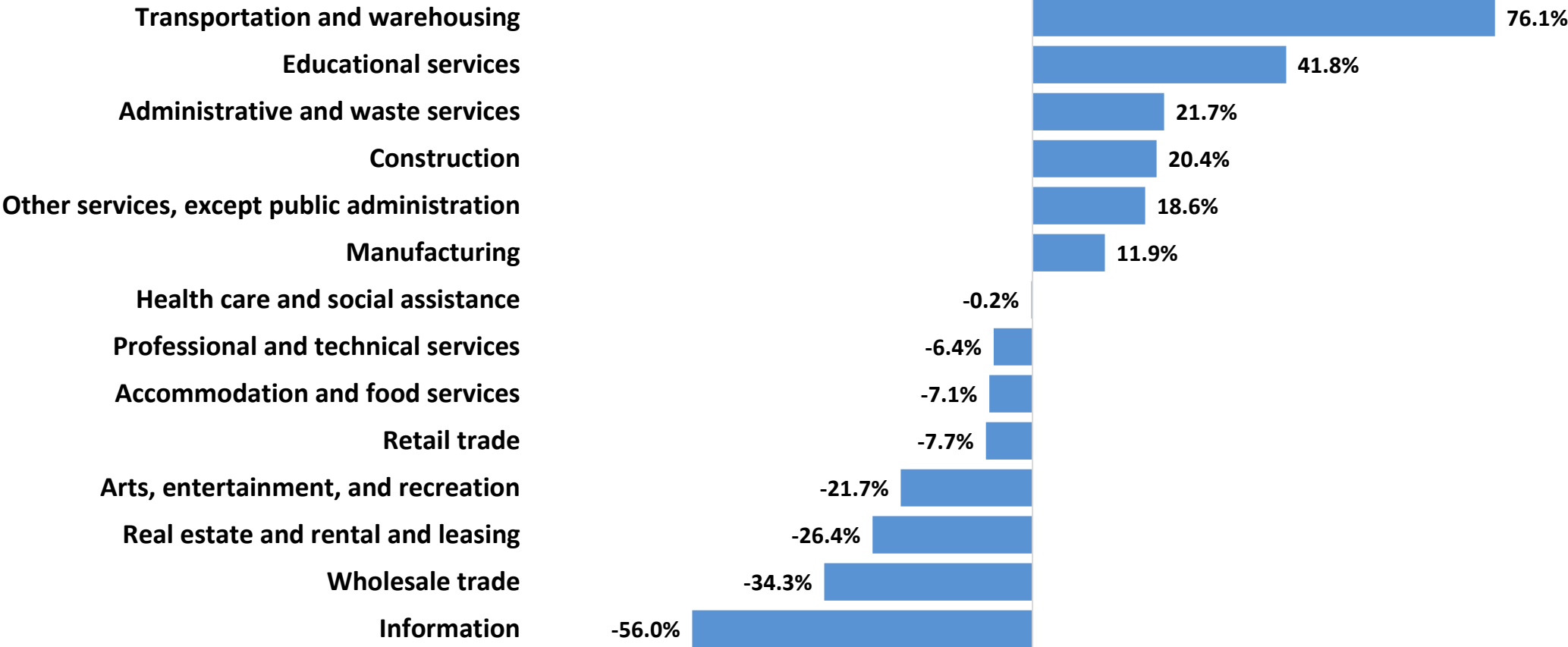
Employment by Private Industry Hunterdon County vs. New Jersey, 2024

| Industry | Hunterdon County | | New Jersey | | Difference between |
|--|------------------|------------|------------|------------|--------------------|
| | Employment | % of Total | Employment | % of Total | |
| Construction | 3,531 | 8.7% | 164,014 | 4.5% | 4.3% |
| Manufacturing | 2,931 | 7.3% | 253,054 | 6.9% | 0.4% |
| Wholesale trade | 1,403 | 3.5% | 213,549 | 5.8% | -2.3% |
| Retail trade | 5,954 | 14.7% | 427,521 | 11.6% | 3.1% |
| Transportation and warehousing | 812 | 2.0% | 233,943 | 6.4% | -4.3% |
| Information | 302 | 0.7% | 76,199 | 2.1% | -1.3% |
| Real estate and rental and leasing | 299 | 0.7% | 189,987 | 5.2% | -4.4% |
| Professional and technical services | 3,734 | 9.2% | 63,263 | 1.7% | 7.5% |
| Management of companies and enterprises | 868 | 2.1% | 336,105 | 9.1% | -7.0% |
| Administrative and waste services | 2,009 | 5.0% | 82,588 | 2.2% | 2.7% |
| Educational services | 852 | 2.1% | 286,750 | 7.8% | -5.7% |
| Health care and social assistance | 6,377 | 15.8% | 656,356 | 17.8% | -2.0% |
| Arts, entertainment, and recreation | 1,126 | 2.8% | 73,699 | 2.0% | 0.8% |
| Accommodation and food services | 3,497 | 8.7% | 328,905 | 8.9% | -0.3% |
| Other services, except public administration | 2,102 | 5.2% | 144,086 | 3.9% | 1.3% |

Full list of employment by industry is available in [Appendix](#).

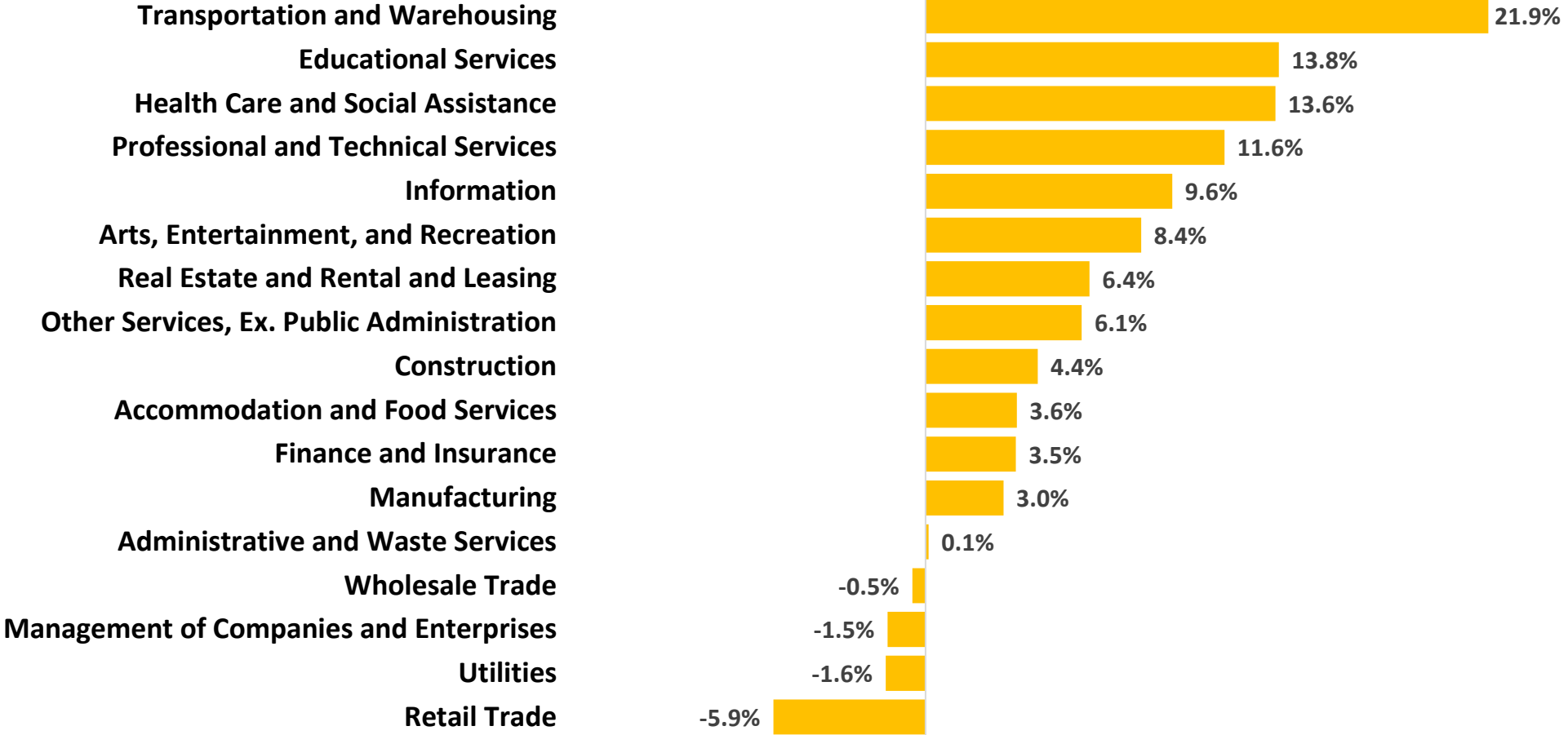
Between 2018 and 2024, transportation and warehousing saw the largest employment growth in Hunterdon County, increasing by 76.1%.

Percent Change in Employment by Industry
Hunterdon County, 2018-2024 (ranked by percentage change in employment)



Transportation and warehousing saw strong growth in New Jersey, expanding by 21.9% from 2018 to 2024.

Percent Change in Employment by Industry
New Jersey, 2018-2024 (ranked by percentage change in employment)



Source: ORI-EDR, Quarterly Census of Employment and Wages (QCEW) program, 2024



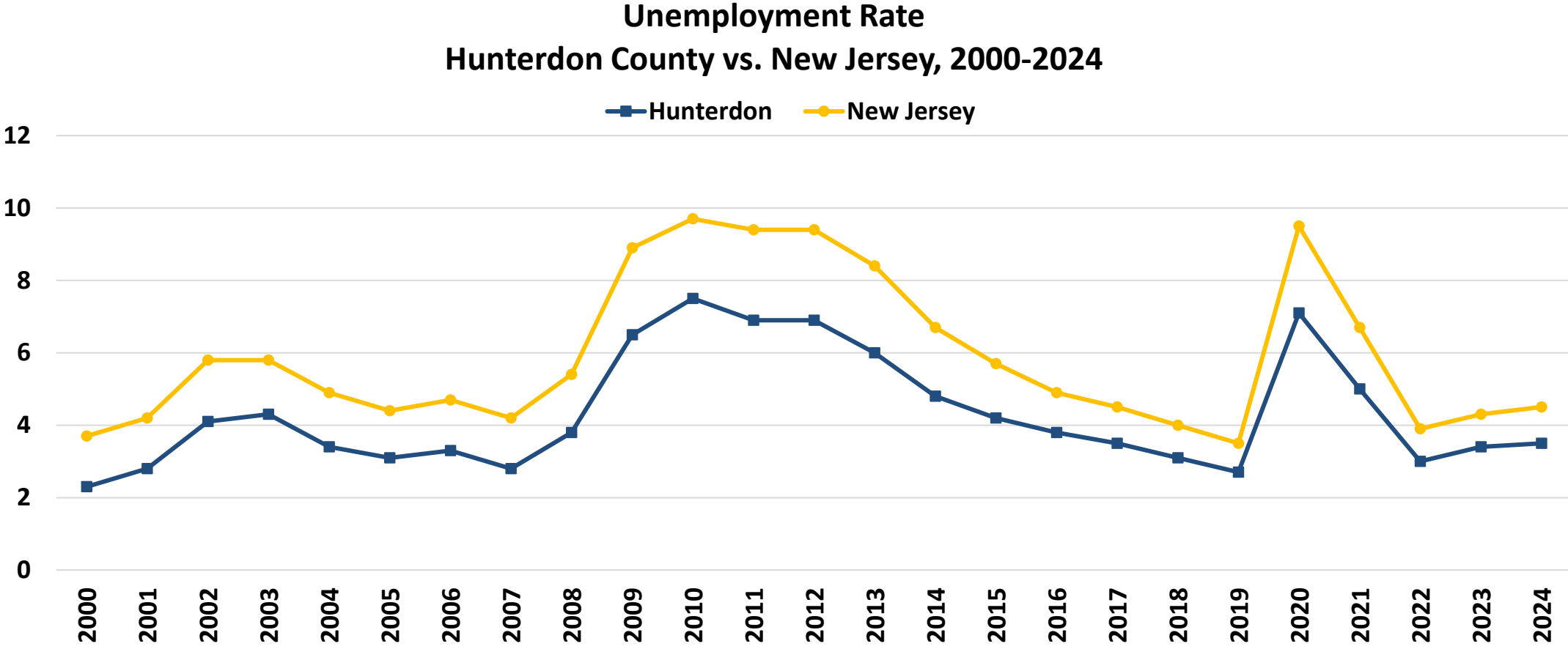
Unemployment Trend

Hunterdon County vs. New Jersey

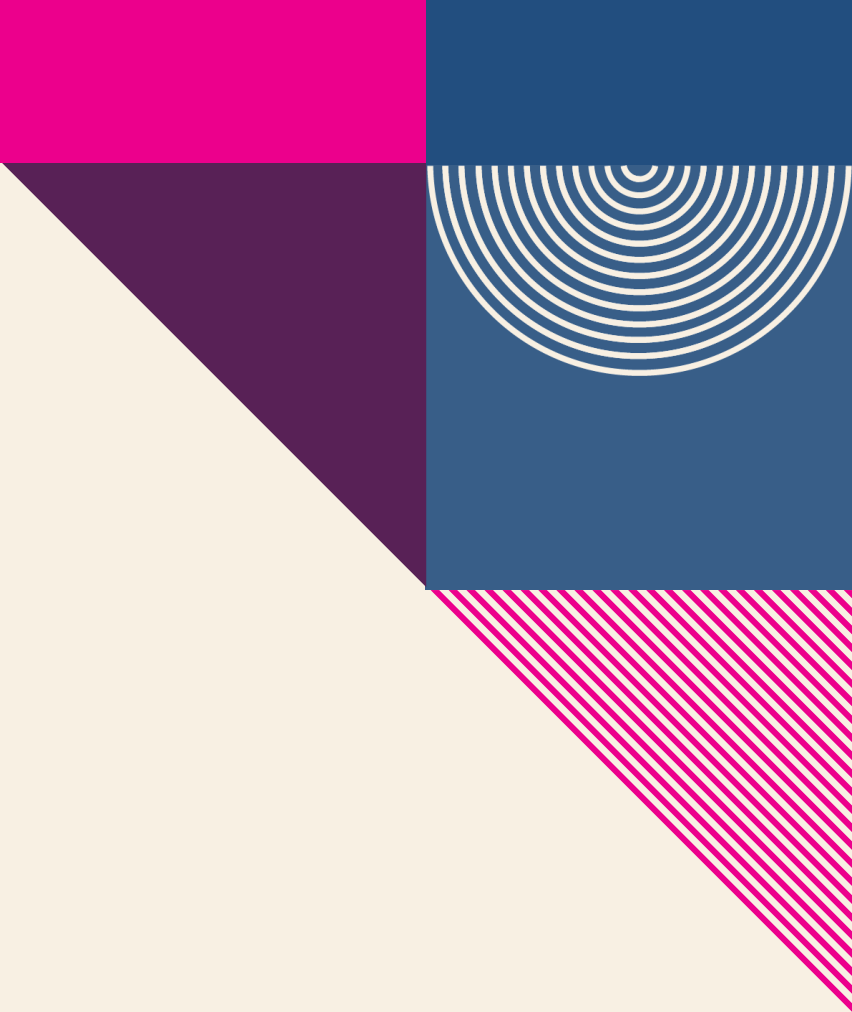
Source: Local Area Unemployment Statistics (LAUS), 2024

The Local Area Unemployment Statistics (LAUS) program produces monthly and annual employment, unemployment, and labor force data for Census regions and divisions, States, counties, metropolitan areas, and many cities, by place of residence.

The unemployment rate in Hunterdon County follows state trends but was slightly lower than the New Jersey average.



Source: ORI-EDR, Local Area Unemployment Statistics (LAUS) program, 2024



Occupational Employment and Wages

Hunterdon County vs. New Jersey

Source: 2024 National Occupational Employment and Wage Estimates (OEWS)

The Occupational Employment and Wage Statistics (OEWS) program produces employment, and wage estimates annually for approximately 830 occupations. These estimates are available for the nation, for individual states, and for metropolitan and nonmetropolitan areas; national occupational estimates for specific industries are also available.

18.9% of Hunterdon County's total employment is concentrated in the top 10 occupations.

Top 10 Occupations, Ranked by Employment Hunterdon County, 2024

| Occupation | Employment | % of Total Employment | Median Hourly Wage |
|--|---------------|-----------------------|--------------------|
| Cashiers | 1,090 | 2.3% | \$16.49 |
| Retail Salespersons | 1,050 | 2.2% | \$17.76 |
| Fast Food and Counter Workers | 1,000 | 2.1% | \$16.26 |
| Home Health and Personal Care Aides | 990 | 2.1% | \$19.70 |
| Stockers and Order Fillers | 960 | 2.0% | \$18.03 |
| Office Clerks, General | 880 | 1.9% | \$23.94 |
| General and Operations Managers | 780 | 1.6% | \$65.57 |
| Secretaries and Admin Assistants | 770 | 1.6% | \$24.92 |
| Receptionists and Information Clerks | 750 | 1.6% | \$18.57 |
| Laborers and Freight, Stock, and Material Movers, Hand | 730 | 1.5% | \$19.24 |
| Top 10 Occupations, Total | 9,000 | 18.9% | |
| All Occupations, Total | 47,520 | 100.0% | \$27.69 |

Note: OES collects the data for 2024.

In New Jersey, the top 10 occupations account for 20.1% of total employment.

Top 10 Occupations, Ranked by Employment New Jersey, 2024

| Occupation | Employment | % of Total Employment | Median Hourly Wage |
|--|------------------|-----------------------|--------------------|
| Home Health and Personal Care Aides | 105,460 | 2.5% | \$17.83 |
| Laborers and Freight, Stock, and Material Movers | 101,720 | 2.4% | \$18.78 |
| Registered Nurses | 95,150 | 2.2% | \$49.39 |
| Cashiers | 93,270 | 2.2% | \$15.96 |
| Retail Salespersons | 87,760 | 2.1% | \$17.13 |
| Fast Food and Counter Workers | 86,980 | 2.0% | \$16.01 |
| Packers and Packagers, Hand | 76,060 | 1.8% | \$20.56 |
| Office Clerks, General | 71,140 | 1.7% | \$23.07 |
| Stockers and Order Fillers | 70,780 | 1.7% | \$17.69 |
| Janitors and Cleaners | 67,590 | 1.6% | \$17.94 |
| Top 10 Occupations, Total | 855,910 | 20.1% | |
| All Occupations, Total | 4,250,430 | 100.0% | \$27.51 |

Note: OEWS collects the data for 2024.

Between 2022 and 2032 in Hunterdon County, the food preparation and serving related occupational group is projected to see the largest net growth (+550).

**Actual and Projected Employment by Occupation Group, Hunterdon County
Top 10 Occupation groups ranked by 2032 Employment Projections**

| Occupational Group | 2022 Actual | 2032 Projected | Net Change | Percent Change |
|---|------------------------|---------------------------|-----------------------|---------------------------|
| Office and Administrative Support Occupations | 6,650 | 6,100 | -550 | -8.3% |
| Sales and Related Occupations | 5,150 | 5,200 | 50 | 1.0% |
| Management Occupations | 3,900 | 4,100 | 200 | 5.1% |
| Transportation and Material Moving Occupations | 3,850 | 4,100 | 250 | 6.5% |
| Food Preparation and Serving Related Occupations | 3,300 | 3,850 | 550 | 16.7% |
| Business and Financial Operations Occupations | 3,650 | 3,700 | 50 | 1.4% |
| Educational Instruction and Library Occupations | 3,500 | 3,650 | 150 | 4.3% |
| Healthcare Practitioners and Technical Occupator | 2,700 | 2,850 | 150 | 5.6% |
| Construction and Extraction Occupations | 2,550 | 2,700 | 150 | 5.9% |
| Personal Care and Service Occupations | 2,100 | 2,300 | 200 | 9.5% |

Note: Employment data for Top 15 occupational groups is available in the [Appendix](#).



JOB POSTINGS



Job Postings

Hunterdon County vs. New Jersey

Source: Lightcast

Lightcast collect raw data on postings from more than 160,000 online sources, then synthesize and interpret those findings to provide meaningful insight in near real time. Job posting analytics can identify supply and demand for workers, skills, and jobs all over the world, as well as important contextual details like compensation trends.

Limitations: One job posting does not necessarily equal one actual job opening. Some companies may post jobs to signal growth to investors or advertise positions in multiple states. Additionally, a decline in job postings doesn't always indicate reduced demand; it could simply mean that companies have already filled their positions and are no longer actively recruiting. We treat this data as directional, offering insights into employer demand rather than exact measurements.



Top 5 Hiring Companies Hunterdon County, 2024

- Hunterdon Medical Center
- Chubb
- Quva Pharma
- Walmart
- Ciocca Automotive

Top 5 Occupations Hunterdon County, 2024

- Retail Salespersons
- Registered Nurses
- Home Health and Personal Care Aides
- Customer Service Representatives
- Software Developers



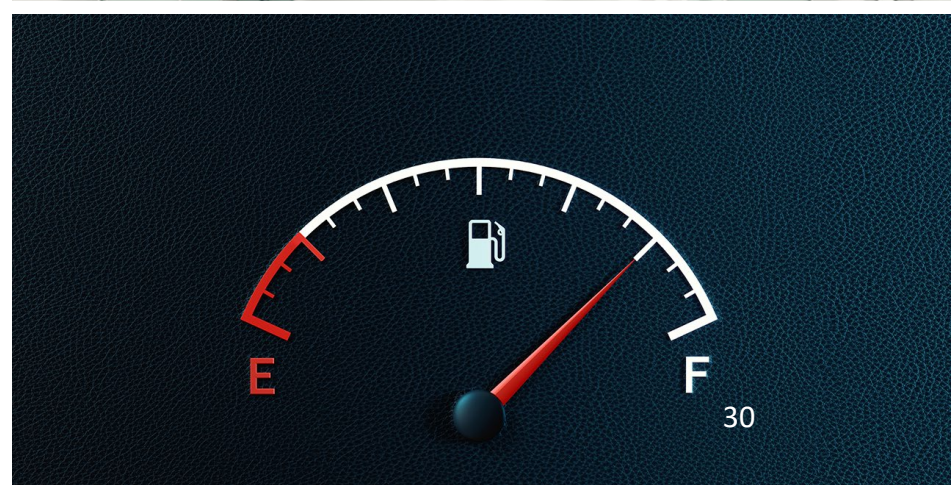
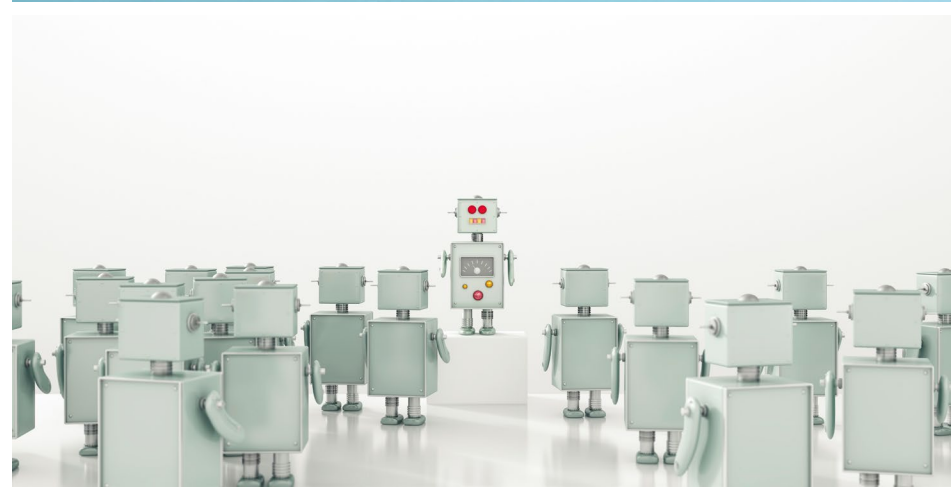


Top 5 Specialized Skills Hunterdon County, 2024

- **Merchandising**
- **Nursing**
- **Marketing**
- **Pharmaceuticals**
- **Project Management**

Top 5 Software Skills

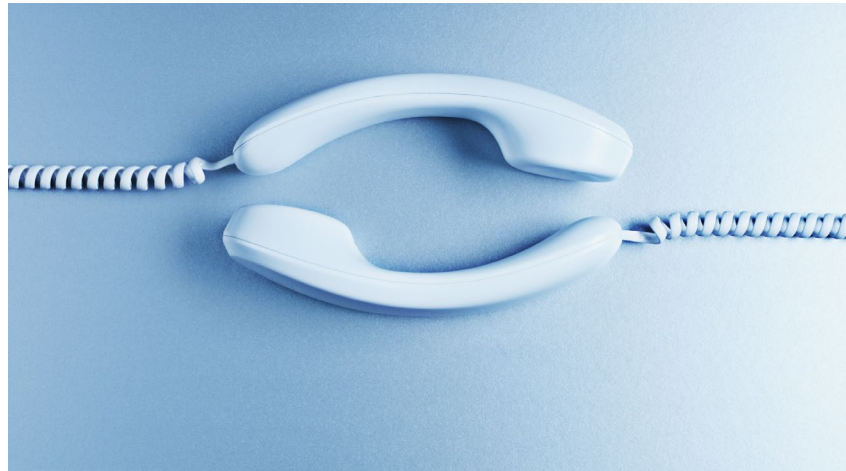
- Microsoft Office (e.g., Excel, and PowerPoint)
- Programming Language (e.g., SQL, Python, and R)
- Application Programming Interface (API)
- Inventory Management
- Amazon Web Services

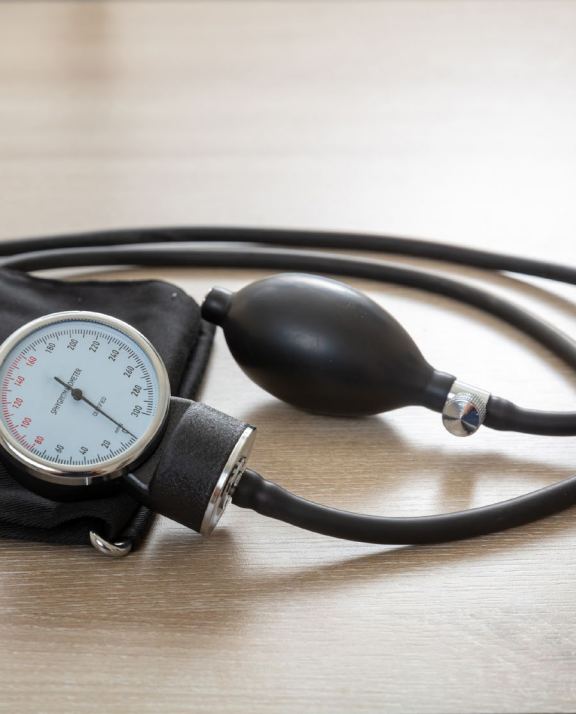




Top 5 Soft Skills Hunterdon County, 2024

- **Communication**
- **Customer Service**
- **Management**
- **Sales**
- **Operations**





Top 5 Certificates

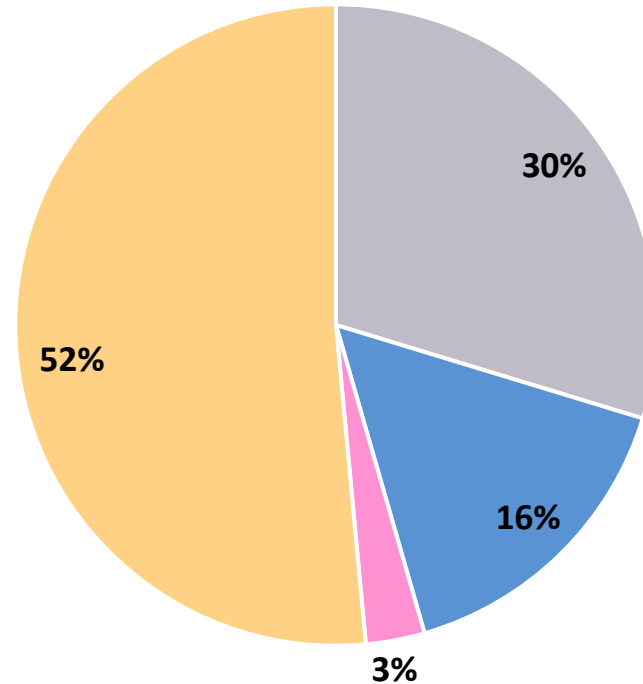
- **Valid Driver's License**
- **Cardiopulmonary Resuscitation (CPR) Certification**
- **Registered Nurse (RN)**
- **Licensed Practical Nurse (LPN)**
- **Basic Life Support (BLS) Certification**



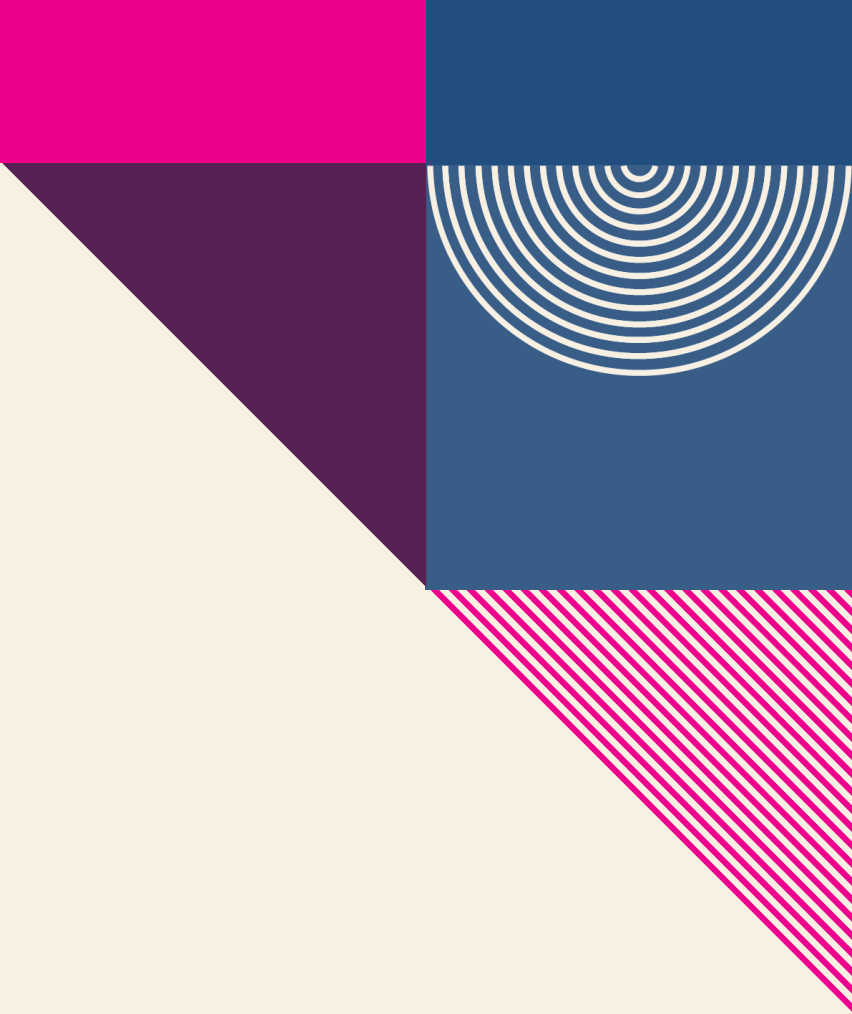
52 percent of all job postings in Hunterdon County require a bachelor's degree or higher.

**Job Postings by Educational Attainment
Hunterdon County, 2024**

■ No education listed ■ High school or GED ■ Associate's degree ■ Bachelor's degree or higher



Note: Bachelor's degree or higher includes Bachelor's Degree, Master, Ph.D. or Professional Degree. While 30% of job postings did not specify educational attainment, this does not necessarily mean there are no requirements for it.



AI-related Job Postings

Hunterdon County vs. New Jersey

Source: Lightcast

To identify AI-related job postings, ORI-EDR compiled a curated list of 130 specific terms. A job listing is deemed AI-related if any of these terms appear in the skills section. A job listing is classified as AI-related if any of these terms are present in the skills section. This includes, but is not limited to, terms such as "AI/ML Inference," "Conversational AI," "Machine Learning Algorithms," "Supervised Learning," and "Deep Learning."

Limitations: One job posting does not necessarily equal one actual job opening. Some companies may post jobs to signal growth to investors or advertise positions in multiple states. Additionally, a decline in job postings doesn't always indicate reduced demand; it could simply mean that companies have already filled their positions and are no longer actively recruiting. We treat this data as directional, offering insights into employer demand rather than exact measurements.

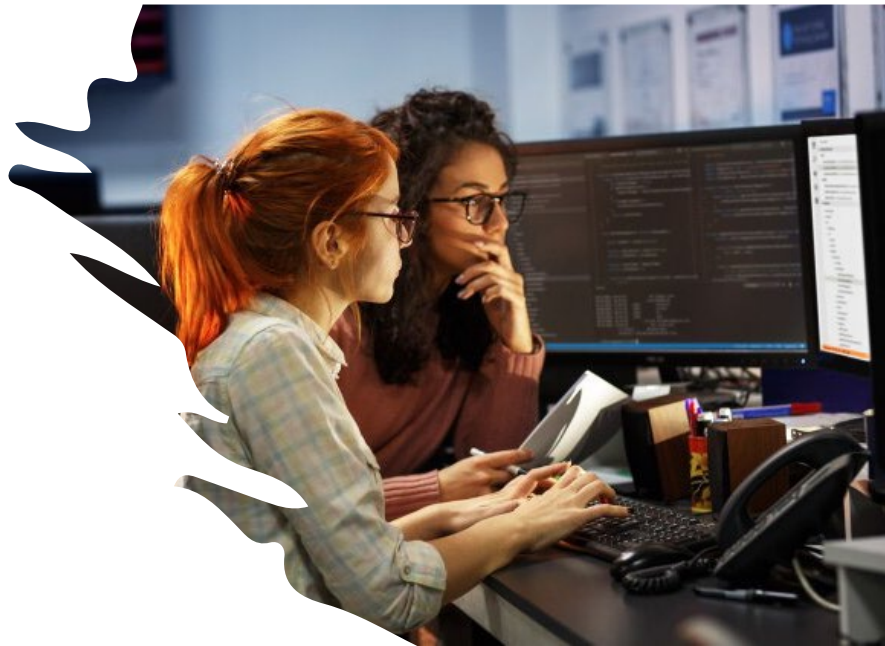
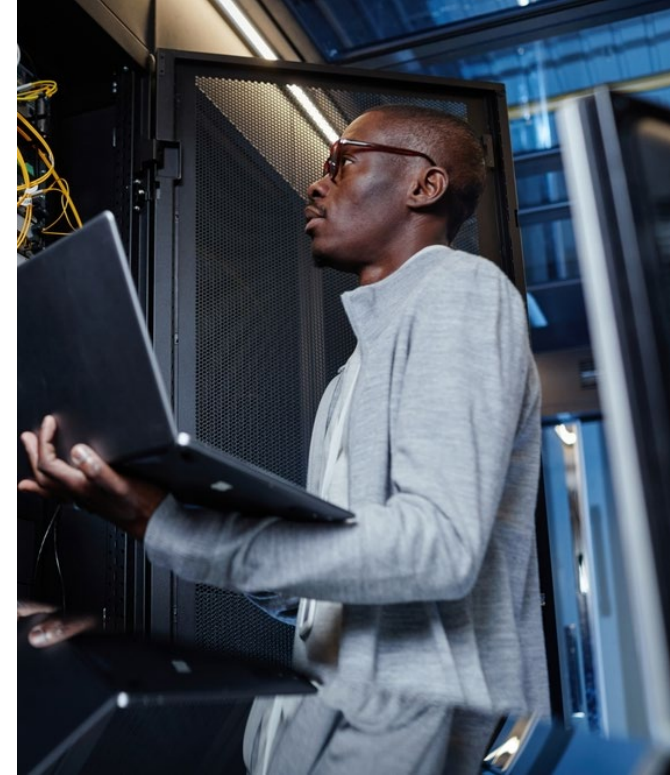


Top 5 AI-related Hiring Companies Hunterdon County, 2024

- Chubb
- Quva Pharma
- New York Life
- Hunterdon Medical Center
- Combined Insurance

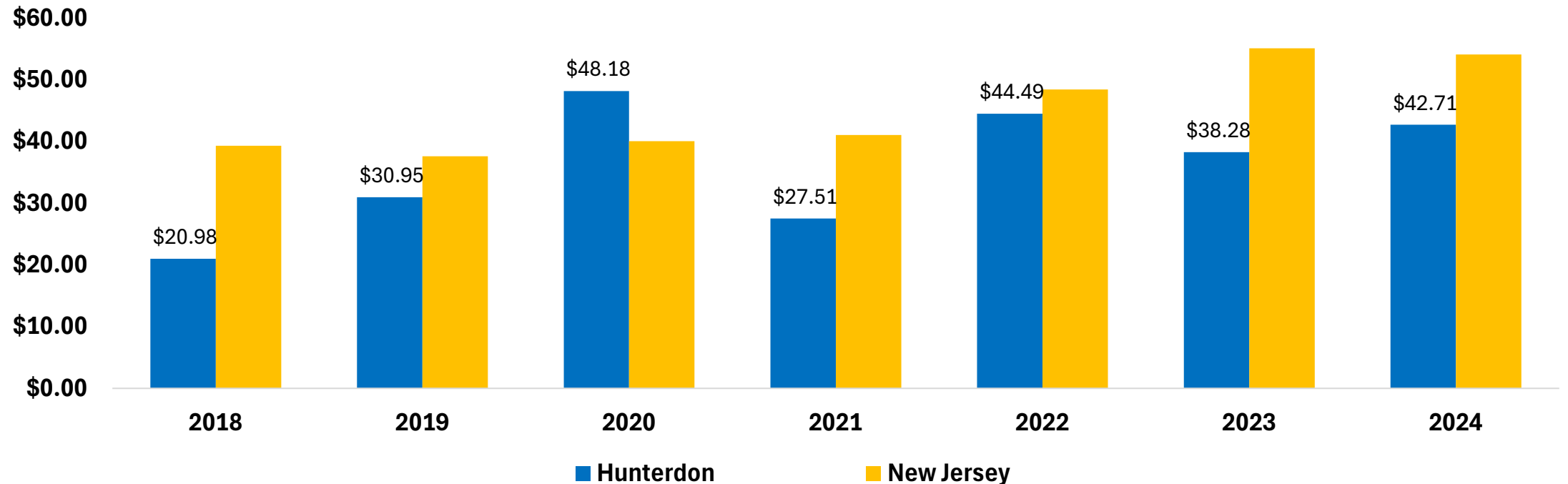
Top 5 AI-related Occupations Hunterdon County, 2024

- Software Developers
- Data Scientists
- Project Management Specialists
- Actuaries
- Marketing Managers



In Hunterdon County, the median hourly wage for AI-related job postings is often lower than the state.

Median Hourly Wage in AI-related Job Postings,
Hunterdon County vs. New Jersey, 2018-2024





TAKEAWAYS

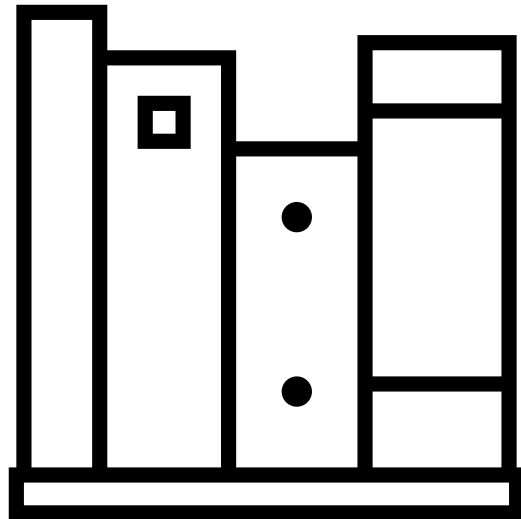


- **Key Economic and Workforce Insights: Hunterdon County**
 - **Demographics**
 - Hunterdon County's population is older and less diverse than New Jersey.
 - The proportion of Hunterdon County residents with a bachelor's degree or higher is 13.2 percentage points above the state.



- **Key Economic and Workforce Insights: Hunterdon County (Continued)**
 - **Industry Composition**
 - 14.3% of business establishments are in health care and social assistance.
 - Professional and technical services and construction are among the sectors with higher employment shares in Hunterdon County compared to the state.

2025 Report Overview and Subscription Information



This report was prepared by the Office of Research and Information, Division of Economic & Demographic Research. This division collects and disseminates vital data on employers, employees, and population demographics.

2025-2026 NJDOL PUBLICATIONS

- [Real-Time Insights: Analysis of Job Posting Data in New Jersey for 2025](#) (January 2026)
- [Identifying and Tracking Emerging Occupations in New Jersey's Key Sectors](#) (January 2026)
- [New Jersey's Manufacturing Sector](#) (Winter 2025)
- [County Brief: Labor Market Facts](#) (December 2025)
- [Labor Market Spotlight - Celebrating New Jersey's Veterans](#) (Issue No. 28, Volume 3: November 2025)
- [Labor Market Spotlight - New Jersey's Waterways Help Keep the Economy Flowing](#) (Issue No. 27, Volume 3: October 2025)
- [New Jersey Employment Situation](#) (September 2025)
- [Job Openings and Labor Turnover Survey \(JOLTS\)](#) (August 2025)
- [New Jersey Building Permits](#) (August 2025)
- [New Jersey's Life Sciences Sector](#) (Fall 2025)
- [Labor Market Spotlight - The Industries Powering New Jersey's Special Moments](#) (Issue No. 26, Volume 3: August 2025)
- [New Jersey's Health Care Sector](#) (June 2025)
- [New Jersey Business Employment Dynamics](#) (May 2025)
- [Survey of Occupational Injuries and Illnesses \(SOII\)](#) (April 2025)
- [Labor Market Spotlight - Fortune 500 Companies](#) (Issue No. 25, Volume 3: March 2025)
- [Labor Market Spotlight - Young Adult Workforce](#) (Issue No. 24, Volume 3: January 2025)

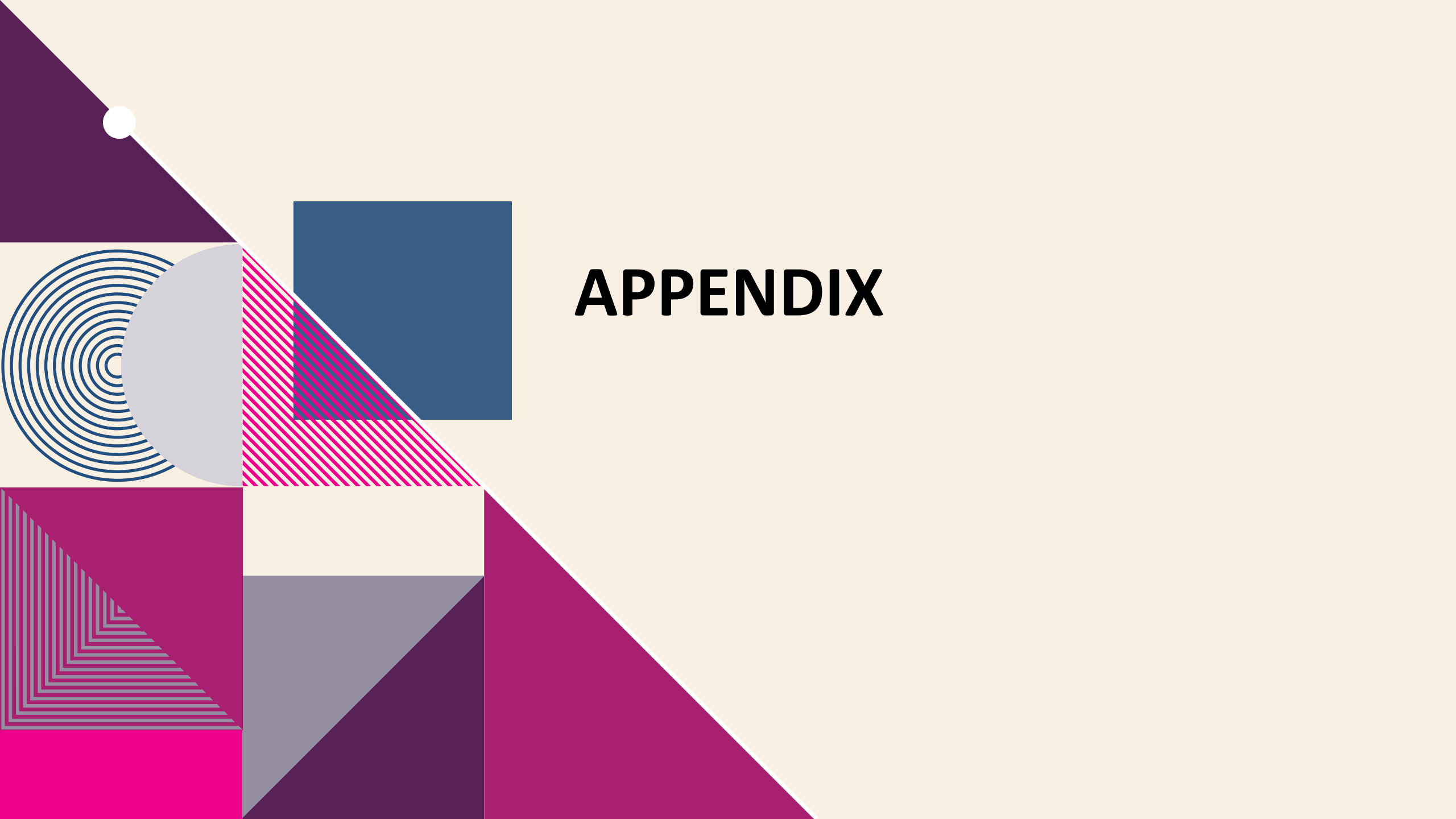
JOIN OUR LIST

Link: nj.gov/labor/subscribetoori





THANK YOU!



APPENDIX

Hunterdon County Establishments, Ranked by Percent of the Total Establishments All Ownerships

| Industry | Total Number of Establishments | Total Number of Employees | % of Total Establishments |
|--|--------------------------------|---------------------------|---------------------------|
| Health care and social assistance | 561 | 6,377 | 14.3% |
| Professional and technical services | 550 | 3,734 | 14.0% |
| Construction | 440 | 3,531 | 11.2% |
| Retail trade | 392 | 5,954 | 10.0% |
| Other services, except public administration | 348 | 2,102 | 8.8% |
| Administrative and waste services | 296 | 2,009 | 7.5% |
| Accommodation and food services | 285 | 3,497 | 7.2% |
| Manufacturing | 146 | 2,931 | 3.7% |
| Wholesale trade | 144 | 1,403 | 3.7% |
| Agriculture, forestry, fishing and hunting | 84 | 1,095 | 2.1% |
| Real estate and rental and leasing | 82 | 299 | 2.1% |
| Arts, entertainment, and recreation | 76 | 1,126 | 1.9% |
| Transportation and warehousing | 58 | 812 | 1.5% |
| Educational services | 56 | 852 | 1.4% |
| Information | 54 | 302 | 1.4% |
| Management of companies and enterprises | 20 | 868 | 0.5% |
| Mining | 7 | 65 | 0.2% |
| Total | 3,933 | 40,378 | 100.0% |

Note: An establishment is considered unknown when there is insufficient detail to accurately determine its primary industry at that location. It will be assigned an industry code once the program can verify its main business activity.

**Actual and Projected Employment by Occupation Group, Hunterdon County
Top 15 Occupations ranked by 2032 Employment Projections**

| Occupational Group | 2022 Actual | 2032 Projected | Net Change | Percent Change |
|--|------------------------|---------------------------|-----------------------|---------------------------|
| Office and Administrative Support Occupations | 6,650 | 6,100 | -550 | -8.3% |
| Sales and Related Occupations | 5,150 | 5,200 | 50 | 1.0% |
| Management Occupations | 3,900 | 4,100 | 200 | 5.1% |
| Transportation and Material Moving Occupations | 3,850 | 4,100 | 250 | 6.5% |
| Food Preparation and Serving Related Occupations | 3,300 | 3,850 | 550 | 16.7% |
| Business and Financial Operations Occupations | 3,650 | 3,700 | 50 | 1.4% |
| Educational Instruction and Library Occupations | 3,500 | 3,650 | 150 | 4.3% |
| Healthcare Practitioners and Technical Occupations | 2,700 | 2,850 | 150 | 5.6% |
| Construction and Extraction Occupations | 2,550 | 2,700 | 150 | 5.9% |
| Personal Care and Service Occupations | 2,100 | 2,300 | 200 | 9.5% |
| Computer and Mathematical Occupations | 1,900 | 2,100 | 200 | 10.5% |
| Healthcare Support Occupations | 1,900 | 2,100 | 200 | 10.5% |
| Production Occupations | 2,000 | 1,850 | -150 | -7.5% |
| Installation, Maintenance, and Repair Occupations | 1,650 | 1,750 | 100 | 6.1% |
| Building and Grounds Cleaning and Maintenance Occupations | 1,400 | 1,450 | 50 | 3.6% |