



Juvenile Demographics and Statistics

Race/ Ethnicity	COMMITTED		WAIVED		PROBATIONER		AFTERCARE		Total									
	MALE	FEMALE	MALE	FEMALE	MALE	FEMALE	MALE	FEMALE										
BLACK	138	73.02%	7	46.67%	29	51.79%	3	100.00%	34	65.38%	1	50.00%	120	71.86%	3	42.86%	335	68.23%
HISPANIC	31	16.40%	1	6.67%	18	32.14%	0	0.00%	12	23.08%	0	0.00%	28	16.77%	1	14.29%	91	18.53%
WHITE	19	10.05%	7	46.67%	8	14.29%	0	0.00%	6	11.54%	1	50.00%	18	10.78%	3	42.86%	62	12.63%
Others	1	0.53%	0	0.00%	1	1.79%	0	0.00%	0	0.00%	0	0.00%	1	0.60%	0	0.00%	3	0.61%
<b>Total</b>	<b>189</b>	<b>100.00%</b>	<b>15</b>	<b>100.00%</b>	<b>56</b>	<b>100.00%</b>	<b>3</b>	<b>100.00%</b>	<b>52</b>	<b>100.00%</b>	<b>2</b>	<b>100.00%</b>	<b>167</b>	<b>100.00%</b>	<b>7</b>	<b>100.00%</b>	<b>491</b>	<b>100.00%</b>

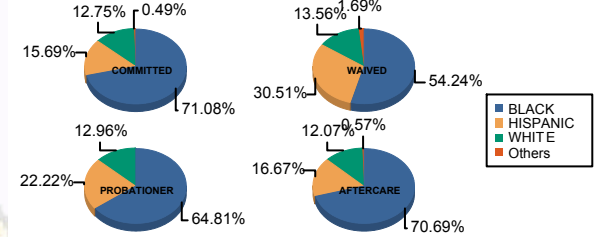
**Age**

13 and Below	0	0.00%	0	0.00%	0	0.00%	0	0.00%	1	1.92%	0	0.00%	0	0.00%	0	0.00%	1	0.20%
14	0	0.00%	0	0.00%	0	0.00%	0	0.00%	3	5.77%	0	0.00%	1	0.60%	0	0.00%	4	0.81%
15	4	2.12%	0	0.00%	0	0.00%	0	0.00%	8	15.38%	0	0.00%	1	0.60%	0	0.00%	13	2.65%
16	19	10.05%	4	26.67%	5	8.93%	0	0.00%	11	21.15%	0	0.00%	3	1.80%	0	0.00%	42	8.55%
17	31	16.40%	3	20.00%	5	8.93%	0	0.00%	14	26.92%	0	0.00%	9	5.39%	0	0.00%	62	12.63%
18	61	32.28%	2	13.33%	17	30.36%	0	0.00%	15	28.85%	1	50.00%	29	17.37%	0	0.00%	125	25.46%
19	39	20.63%	2	13.33%	12	21.43%	1	33.33%	0	0.00%	0	0.00%	34	20.36%	1	14.29%	89	18.13%
20 and Above	35	18.52%	4	26.67%	17	30.36%	2	66.67%	0	0.00%	1	50.00%	90	53.89%	6	85.71%	155	31.57%
<b>Total</b>	<b>189</b>	<b>100.00%</b>	<b>15</b>	<b>100.00%</b>	<b>56</b>	<b>100.00%</b>	<b>3</b>	<b>100.00%</b>	<b>52</b>	<b>100.00%</b>	<b>2</b>	<b>100.00%</b>	<b>167</b>	<b>100.00%</b>	<b>7</b>	<b>100.00%</b>	<b>491</b>	<b>100.00%</b>
<b>Average Age</b>	<b>18.31</b>		<b>18.13</b>		<b>18.64</b>		<b>19.67</b>		<b>16.52</b>		<b>19.00</b>		<b>20.37</b>		<b>21.57</b>		<b>18.91</b>	

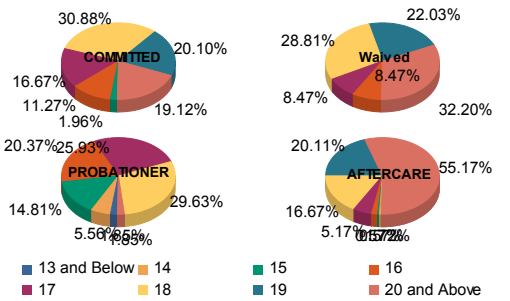
**Sentencing County**

ATL	10	5.29%	0	0.00%	7	12.50%	0	0.00%	0	0.00%	0	0.00%	6	3.59%	1	14.29%	24	4.89%
BER	4	2.12%	0	0.00%	0	0.00%	0	0.00%	2	3.85%	0	0.00%	3	1.80%	0	0.00%	9	1.83%
BUR	9	4.76%	1	6.67%	2	3.57%	0	0.00%	3	5.77%	0	0.00%	3	1.80%	1	14.29%	19	3.87%
CAM	39	20.63%	3	20.00%	7	12.50%	3	100.00%	13	25.00%	1	50.00%	37	22.16%	1	14.29%	104	21.18%
CAP	0	0.00%	0	0.00%	0	0.00%	0	0.00%	1	1.92%	0	0.00%	1	0.60%	0	0.00%	2	0.41%
CUM	6	3.17%	0	0.00%	0	0.00%	0	0.00%	1	1.92%	0	0.00%	3	1.80%	0	0.00%	10	2.04%
ESS	35	18.52%	0	0.00%	4	7.14%	0	0.00%	4	7.69%	0	0.00%	22	13.17%	1	14.29%	66	13.44%
GLO	0	0.00%	0	0.00%	0	0.00%	0	0.00%	0	0.00%	0	0.00%	1	0.60%	0	0.00%	1	0.20%
HUD	3	1.59%	0	0.00%	0	0.00%	0	0.00%	7	13.46%	0	0.00%	10	5.99%	0	0.00%	20	4.07%
HUN	1	0.53%	0	0.00%	0	0.00%	0	0.00%	0	0.00%	0	0.00%	0	0.00%	0	0.00%	1	0.20%
MER	11	5.82%	2	13.33%	4	7.14%	0	0.00%	2	3.85%	0	0.00%	18	10.78%	0	0.00%	37	7.54%
MID	25	13.23%	4	26.67%	11	19.64%	0	0.00%	1	1.92%	0	0.00%	19	11.38%	0	0.00%	60	12.22%
MON	4	2.12%	0	0.00%	4	7.14%	0	0.00%	0	0.00%	0	0.00%	2	1.20%	0	0.00%	10	2.04%
MOR	2	1.06%	1	6.67%	0	0.00%	0	0.00%	0	0.00%	0	0.00%	0	0.00%	0	0.00%	3	0.61%
OCE	3	1.59%	0	0.00%	4	7.14%	0	0.00%	1	1.92%	0	0.00%	7	4.19%	0	0.00%	15	3.05%
PAS	22	11.64%	2	13.33%	13	23.21%	0	0.00%	8	15.38%	1	50.00%	19	11.38%	1	14.29%	66	13.44%
SAL	0	0.00%	0	0.00%	0	0.00%	0	0.00%	0	0.00%	0	0.00%	1	0.60%	0	0.00%	1	0.20%
SOM	1	0.53%	0	0.00%	0	0.00%	0	0.00%	0	0.00%	0	0.00%	0	0.00%	0	0.00%	1	0.20%
SUS	0	0.00%	0	0.00%	0	0.00%	0	0.00%	0	0.00%	0	0.00%	1	0.60%	1	14.29%	2	0.41%
UNI	14	7.41%	2	13.33%	0	0.00%	0	0.00%	9	17.31%	0	0.00%	9	5.39%	1	14.29%	35	7.13%
OTHER	0	0.00%	0	0.00%	0	0.00%	0	0.00%	0	0.00%	0	0.00%	5	2.99%	0	0.00%	5	1.02%
<b>Total</b>	<b>189</b>	<b>100.00%</b>	<b>15</b>	<b>100.00%</b>	<b>56</b>	<b>100.00%</b>	<b>3</b>	<b>100.00%</b>	<b>52</b>	<b>100.00%</b>	<b>2</b>	<b>100.00%</b>	<b>167</b>	<b>100.00%</b>	<b>7</b>	<b>100.00%</b>	<b>491</b>	<b>100.00%</b>

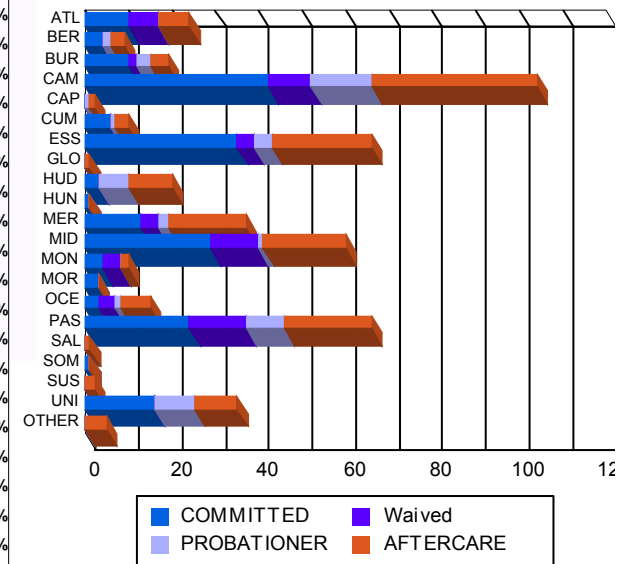
**Race/Ethnicity Grouping**



**Age Grouping**



**Count of Juveniles By Sentencing County**





Juvenile Demographics and Statistics

Current Grade	COMMITTED		WAIVED		PROBATIONER		Total
	MALE	FEMALE	MALE	FEMALE	MALE	FEMALE	
7	0 (0.00%)	0 (0.00%)	0 (0.00%)	0 (0.00%)	1 (1.92%)	0 (0.00%)	1 (0.32%)
8	0 (0.00%)	0 (0.00%)	0 (0.00%)	0 (0.00%)	2 (3.85%)	0 (0.00%)	2 (0.63%)
9	12 (6.35%)	3 (20.00%)	5 (8.93%)	0 (0.00%)	13 (25.00%)	0 (0.00%)	33 (10.41%)
10	34 (17.99%)	6 (40.00%)	5 (8.93%)	0 (0.00%)	12 (23.08%)	0 (0.00%)	57 (17.98%)
11	27 (14.29%)	1 (6.67%)	10 (17.86%)	0 (0.00%)	10 (19.23%)	0 (0.00%)	48 (15.14%)
12	28 (14.81%)	1 (6.67%)	11 (19.64%)	0 (0.00%)	3 (5.77%)	0 (0.00%)	43 (13.56%)
HSG	69 (36.51%)	3 (20.00%)	24 (42.86%)	3 (100.00%)	7 (13.46%)	2 (100.00%)	108 (34.07%)
GED	7 (3.70%)	0 (0.00%)	1 (1.79%)	0 (0.00%)	1 (1.92%)	0 (0.00%)	9 (2.84%)
Others **	12 (6.35%)	1 (6.67%)	0 (0.00%)	0 (0.00%)	3 (5.77%)	0 (0.00%)	16 (5.05%)
<b>Total</b>	<b>189 (100.00%)</b>	<b>15 (100.00%)</b>	<b>56 (100.00%)</b>	<b>3 (100.00%)</b>	<b>52 (100.00%)</b>	<b>2 (100.00%)</b>	<b>317 (100.00%)</b>

\*\* Includes Aged Out Juveniles and Pending Records

Special Education Services

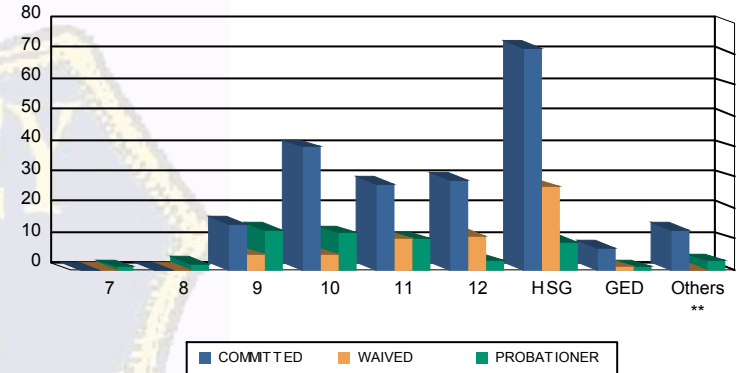
Yes	83 (43.92%)	4 (26.67%)	24 (42.86%)	2 (66.67%)	26 (50.00%)	1 (50.00%)	140 (44.16%)
No	105 (55.56%)	11 (73.33%)	32 (57.14%)	1 (33.33%)	24 (46.15%)	1 (50.00%)	174 (54.89%)
Pending	1 (0.53%)	0 (0.00%)	0 (0.00%)	0 (0.00%)	2 (3.85%)	0 (0.00%)	3 (0.95%)
<b>Total</b>	<b>189 (100.00%)</b>	<b>15 (100.00%)</b>	<b>56 (100.00%)</b>	<b>3 (100.00%)</b>	<b>52 (100.00%)</b>	<b>2 (100.00%)</b>	<b>317 (100.00%)</b>

Offense Categories

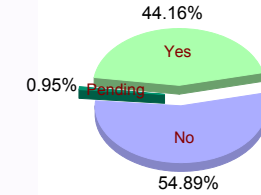
Drug	101 (8.17%)	7 (9.72%)	4 (4.08%)	1 (7.14%)	12 (9.02%)	0 (0.00%)	125 (8.03%)
Persons	358 (28.96%)	16 (22.22%)	52 (53.06%)	5 (35.71%)	31 (23.31%)	1 (33.33%)	463 (29.76%)
Property	204 (16.50%)	12 (16.67%)	7 (7.14%)	2 (14.29%)	20 (15.04%)	0 (0.00%)	245 (15.75%)
Public Order	165 (13.35%)	14 (19.44%)	12 (12.24%)	2 (14.29%)	18 (13.53%)	0 (0.00%)	211 (13.56%)
VOP	255 (20.63%)	16 (22.22%)	6 (6.12%)	2 (14.29%)	31 (23.31%)	2 (66.67%)	312 (20.05%)
Weapons	140 (11.33%)	6 (8.33%)	16 (16.33%)	1 (7.14%)	18 (13.53%)	0 (0.00%)	181 (11.63%)
Others Offenses	13 (1.05%)	1 (1.39%)	1 (1.02%)	1 (7.14%)	3 (2.26%)	0 (0.00%)	19 (1.22%)
<b>Total *</b>	<b>1,236 (100.00%)</b>	<b>72 (100.00%)</b>	<b>98 (100.00%)</b>	<b>14 (100.00%)</b>	<b>133 (100.00%)</b>	<b>3 (100.00%)</b>	<b>1,556 (100.00%)</b>

\* Juveniles may have multiple offenses

Current Grade



Special Education



Offense Categories

