



Juvenile Demographics and Statistics

Race/ Ethnicity	COMMITTED		WAIVED		PROBATIONER		AFTERCARE		Total									
	MALE	FEMALE	MALE	FEMALE	MALE	FEMALE	MALE	FEMALE										
BLACK	137	72.87%	8	57.14%	29	51.79%	3	100.00%	33	63.46%	1	50.00%	121	72.02%	3	37.50%	335	68.23%
HISPANIC	33	17.55%	0	0.00%	18	32.14%	0	0.00%	13	25.00%	0	0.00%	27	16.07%	1	12.50%	92	18.74%
WHITE	17	9.04%	6	42.86%	8	14.29%	0	0.00%	6	11.54%	1	50.00%	19	11.31%	4	50.00%	61	12.42%
Others	1	0.53%	0	0.00%	1	1.79%	0	0.00%	0	0.00%	0	0.00%	1	0.60%	0	0.00%	3	0.61%
Total	188	100.00%	14	100.00%	56	100.00%	3	100.00%	52	100.00%	2	100.00%	168	100.00%	8	100.00%	491	100.00%

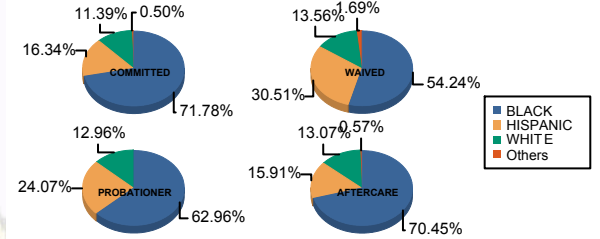
Age

13 and Below	0	0.00%	0	0.00%	0	0.00%	0	0.00%	1	1.92%	0	0.00%	0	0.00%	0	0.00%	1	0.20%
14	1	0.53%	0	0.00%	0	0.00%	0	0.00%	4	7.69%	0	0.00%	1	0.60%	0	0.00%	6	1.22%
15	4	2.13%	0	0.00%	0	0.00%	0	0.00%	6	11.54%	0	0.00%	1	0.60%	0	0.00%	11	2.24%
16	17	9.04%	3	21.43%	5	8.93%	0	0.00%	12	23.08%	0	0.00%	4	2.38%	1	12.50%	42	8.55%
17	34	18.09%	4	28.57%	4	7.14%	0	0.00%	16	30.77%	0	0.00%	9	5.36%	0	0.00%	67	13.65%
18	55	29.26%	2	14.29%	19	33.93%	0	0.00%	13	25.00%	1	50.00%	27	16.07%	0	0.00%	117	23.83%
19	39	20.74%	2	14.29%	13	23.21%	1	33.33%	0	0.00%	0	0.00%	37	22.02%	1	12.50%	93	18.94%
20 and Above	38	20.21%	3	21.43%	15	26.79%	2	66.67%	0	0.00%	1	50.00%	89	52.98%	6	75.00%	154	31.36%
Total	188	100.00%	14	100.00%	56	100.00%	3	100.00%	52	100.00%	2	100.00%	168	100.00%	8	100.00%	491	100.00%
Average Age	18.34		18.07		18.63		19.67		16.48		19.00		20.33		20.88		18.90	

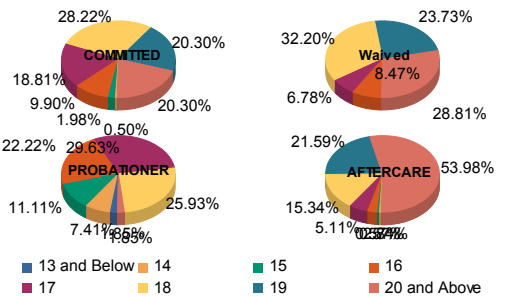
Sentencing County

ATL	11	5.85%	0	0.00%	6	10.71%	0	0.00%	0	0.00%	0	0.00%	6	3.57%	1	12.50%	24	4.89%
BER	4	2.13%	0	0.00%	0	0.00%	0	0.00%	2	3.85%	0	0.00%	3	1.79%	0	0.00%	9	1.83%
BUR	8	4.26%	1	7.14%	2	3.57%	0	0.00%	3	5.77%	0	0.00%	3	1.79%	1	12.50%	18	3.67%
CAM	41	21.81%	3	21.43%	7	12.50%	3	100.00%	13	25.00%	1	50.00%	35	20.83%	1	12.50%	104	21.18%
CAP	0	0.00%	0	0.00%	0	0.00%	0	0.00%	2	3.85%	0	0.00%	1	0.60%	0	0.00%	3	0.61%
CUM	5	2.66%	1	7.14%	0	0.00%	0	0.00%	2	3.85%	0	0.00%	3	1.79%	0	0.00%	11	2.24%
ESS	34	18.09%	0	0.00%	4	7.14%	0	0.00%	4	7.69%	0	0.00%	22	13.10%	1	12.50%	65	13.24%
GLO	0	0.00%	0	0.00%	0	0.00%	0	0.00%	1	1.92%	0	0.00%	1	0.60%	0	0.00%	2	0.41%
HUD	2	1.06%	0	0.00%	1	1.79%	0	0.00%	7	13.46%	0	0.00%	10	5.95%	0	0.00%	20	4.07%
HUN	1	0.53%	0	0.00%	0	0.00%	0	0.00%	0	0.00%	0	0.00%	0	0.00%	0	0.00%	1	0.20%
MER	11	5.85%	2	14.29%	4	7.14%	0	0.00%	2	3.85%	0	0.00%	18	10.71%	0	0.00%	37	7.54%
MID	25	13.30%	3	21.43%	12	21.43%	0	0.00%	0	0.00%	0	0.00%	19	11.31%	0	0.00%	59	12.02%
MON	5	2.66%	0	0.00%	4	7.14%	0	0.00%	0	0.00%	0	0.00%	2	1.19%	0	0.00%	11	2.24%
MOR	2	1.06%	0	0.00%	0	0.00%	0	0.00%	0	0.00%	0	0.00%	0	0.00%	1	12.50%	3	0.61%
OCE	2	1.06%	0	0.00%	3	5.36%	0	0.00%	1	1.92%	0	0.00%	8	4.76%	0	0.00%	14	2.85%
PAS	21	11.17%	2	14.29%	13	23.21%	0	0.00%	7	13.46%	1	50.00%	20	11.90%	1	12.50%	65	13.24%
SAL	0	0.00%	0	0.00%	0	0.00%	0	0.00%	0	0.00%	0	0.00%	1	0.60%	0	0.00%	1	0.20%
SOM	1	0.53%	0	0.00%	0	0.00%	0	0.00%	0	0.00%	0	0.00%	0	0.00%	0	0.00%	1	0.20%
SUS	0	0.00%	0	0.00%	0	0.00%	0	0.00%	0	0.00%	0	0.00%	1	0.60%	1	12.50%	2	0.41%
UNI	15	7.98%	2	14.29%	0	0.00%	0	0.00%	8	15.38%	0	0.00%	10	5.95%	1	12.50%	36	7.33%
OTHER	0	0.00%	0	0.00%	0	0.00%	0	0.00%	0	0.00%	0	0.00%	5	2.98%	0	0.00%	5	1.02%
Total	188	100.00%	14	100.00%	56	100.00%	3	100.00%	52	100.00%	2	100.00%	168	100.00%	8	100.00%	491	100.00%

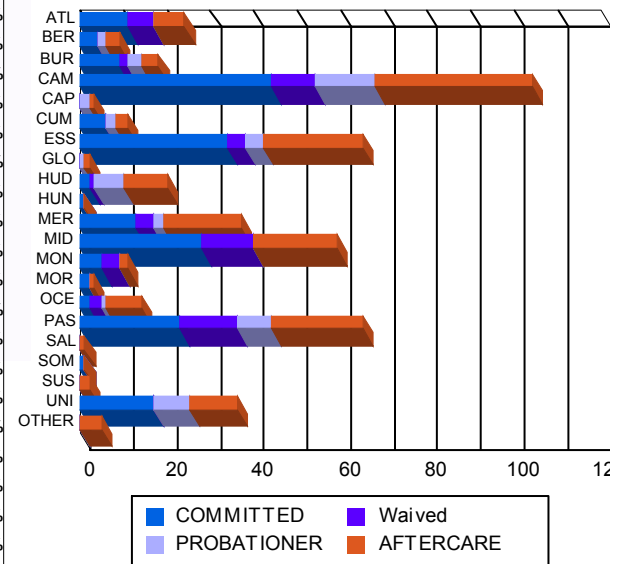
Race/Ethnicity Grouping



Age Grouping



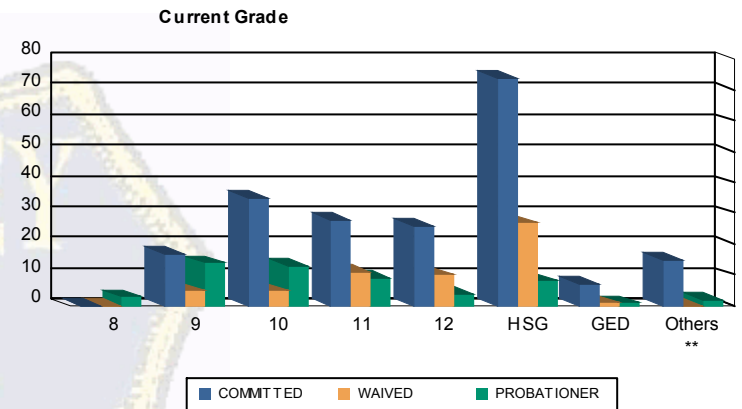
Count of Juveniles By Sentencing County





Juvenile Demographics and Statistics

Current Grade	COMMITTED		WAIVED		PROBATIONER		Total
	MALE	FEMALE	MALE	FEMALE	MALE	FEMALE	
8	0 (0.00%)	0 (0.00%)	0 (0.00%)	0 (0.00%)	3 (5.77%)	0 (0.00%)	3 (0.95%)
9	15 (7.98%)	2 (14.29%)	5 (8.93%)	0 (0.00%)	14 (26.92%)	0 (0.00%)	36 (11.43%)
10	30 (15.96%)	5 (35.71%)	5 (8.93%)	0 (0.00%)	13 (25.00%)	0 (0.00%)	53 (16.83%)
11	26 (13.83%)	2 (14.29%)	11 (19.64%)	0 (0.00%)	9 (17.31%)	0 (0.00%)	48 (15.24%)
12	25 (13.30%)	1 (7.14%)	10 (17.86%)	0 (0.00%)	4 (7.69%)	0 (0.00%)	40 (12.70%)
HSG	72 (38.30%)	2 (14.29%)	24 (42.86%)	3 (100.00%)	6 (11.54%)	2 (100.00%)	109 (34.60%)
GED	7 (3.72%)	0 (0.00%)	1 (1.79%)	0 (0.00%)	1 (1.92%)	0 (0.00%)	9 (2.86%)
Others **	13 (6.91%)	2 (14.29%)	0 (0.00%)	0 (0.00%)	2 (3.85%)	0 (0.00%)	17 (5.40%)
Total	188 (100.00%)	14 (100.00%)	56 (100.00%)	3 (100.00%)	52 (100.00%)	2 (100.00%)	315 (100.00%)

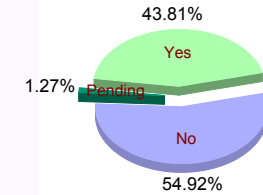


** Includes Aged Out Juveniles and Pending Records

Special Education Services

	Yes	No	Pending	Total
COMMITTED	80 (42.55%)	106 (56.38%)	2 (1.06%)	188 (100.00%)
WAIVED	3 (21.43%)	10 (71.43%)	1 (7.14%)	14 (100.00%)
PROBATIONER	26 (46.43%)	30 (53.57%)	0 (0.00%)	56 (100.00%)
COMMITTED	2 (66.67%)	1 (33.33%)	0 (0.00%)	3 (100.00%)
WAIVED	26 (50.00%)	25 (48.08%)	1 (1.92%)	52 (100.00%)
PROBATIONER	1 (50.00%)	1 (50.00%)	0 (0.00%)	2 (100.00%)
Total	138 (43.81%)	173 (54.92%)	4 (1.27%)	315 (100.00%)

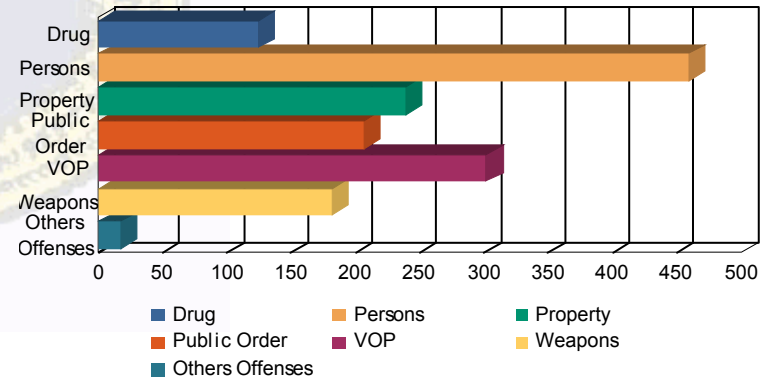
Special Education



Offense Categories

	COMMITTED	WAIVED	PROBATIONER	Total
Drug	101 (8.29%)	7 (9.72%)	5 (4.76%)	113 (35.73%)
Persons	351 (28.79%)	16 (22.22%)	57 (54.29%)	424 (134.28%)
Property	201 (16.49%)	12 (16.67%)	6 (5.71%)	219 (68.87%)
Public Order	164 (13.45%)	14 (19.44%)	11 (10.48%)	189 (59.37%)
VOP	247 (20.26%)	16 (22.22%)	6 (5.71%)	269 (84.19%)
Weapons	142 (11.65%)	6 (8.33%)	19 (18.10%)	167 (52.08%)
Others Offenses	13 (1.07%)	1 (1.39%)	1 (0.95%)	15 (4.65%)
Total *	1,219 (100.00%)	72 (100.00%)	105 (100.00%)	1,529 (100.00%)

Offense Categories



* Juveniles may have multiple offenses