



Juvenile Demographics and Statistics

Race/ Ethnicity	COMMITTED				WAIVED				PROBATIONER				AFTERCARE				Total	
	MALE	FEMALE	MALE	FEMALE	MALE	FEMALE	MALE	FEMALE	MALE	FEMALE	MALE	FEMALE	MALE	FEMALE				
BLACK	151	72.25%	5	62.50%	27	65.85%	3	100.00%	30	65.22%	2	66.67%	99	63.87%	4	36.36%	321	67.44%
HISPANIC	38	18.18%	1	12.50%	10	24.39%	0	0.00%	10	21.74%	0	0.00%	35	22.58%	2	18.18%	96	20.17%
WHITE	18	8.61%	2	25.00%	4	9.76%	0	0.00%	5	10.87%	1	33.33%	20	12.90%	5	45.45%	55	11.55%
ASIAN	0	0.00%	0	0.00%	0	0.00%	0	0.00%	0	0.00%	0	0.00%	1	0.65%	0	0.00%	1	0.21%
Others	2	0.96%	0	0.00%	0	0.00%	0	0.00%	1	2.17%	0	0.00%	0	0.00%	0	0.00%	3	0.63%
<b>Total</b>	<b>209</b>	<b>100.00%</b>	<b>8</b>	<b>100.00%</b>	<b>41</b>	<b>100.00%</b>	<b>3</b>	<b>100.00%</b>	<b>46</b>	<b>100.00%</b>	<b>3</b>	<b>100.00%</b>	<b>155</b>	<b>100.00%</b>	<b>11</b>	<b>100.00%</b>	<b>476</b>	<b>100.00%</b>

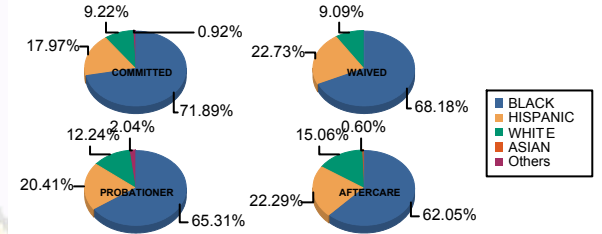
Age

13 and Below	1	0.48%	0	0.00%	0	0.00%	0	0.00%	0	0.00%	0	0.00%	0	0.00%	0	0.00%	1	0.21%
14	2	0.96%	0	0.00%	0	0.00%	0	0.00%	0	0.00%	0	0.00%	0	0.00%	0	0.00%	2	0.42%
15	4	1.91%	0	0.00%	0	0.00%	0	0.00%	4	8.70%	1	33.33%	0	0.00%	0	0.00%	9	1.89%
16	19	9.09%	2	25.00%	1	2.44%	0	0.00%	18	39.13%	2	66.67%	3	1.94%	1	9.09%	46	9.66%
17	38	18.18%	0	0.00%	4	9.76%	0	0.00%	12	26.09%	0	0.00%	8	5.16%	2	18.18%	64	13.45%
18	58	27.75%	1	12.50%	7	17.07%	1	33.33%	12	26.09%	0	0.00%	19	12.26%	1	9.09%	99	20.80%
19	42	20.10%	4	50.00%	18	43.90%	1	33.33%	0	0.00%	0	0.00%	38	24.52%	1	9.09%	104	21.85%
20 and Above	45	21.53%	1	12.50%	11	26.83%	1	33.33%	0	0.00%	0	0.00%	87	56.13%	6	54.55%	151	31.72%
<b>Total</b>	<b>209</b>	<b>100.00%</b>	<b>8</b>	<b>100.00%</b>	<b>41</b>	<b>100.00%</b>	<b>3</b>	<b>100.00%</b>	<b>46</b>	<b>100.00%</b>	<b>3</b>	<b>100.00%</b>	<b>155</b>	<b>100.00%</b>	<b>11</b>	<b>100.00%</b>	<b>476</b>	<b>100.00%</b>
<b>Average Age</b>	<b>18.35</b>		<b>18.63</b>		<b>18.88</b>		<b>19.00</b>		<b>16.70</b>		<b>15.67</b>		<b>20.47</b>		<b>19.45</b>		<b>18.94</b>	

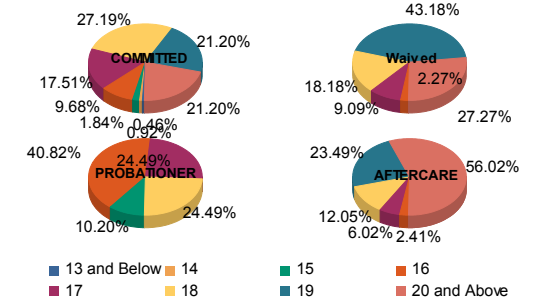
Sentencing County

ATL	7	3.35%	0	0.00%	5	12.20%	0	0.00%	0	0.00%	0	0.00%	8	5.16%	1	9.09%	21	4.41%
BER	7	3.35%	0	0.00%	0	0.00%	0	0.00%	1	2.17%	0	0.00%	3	1.94%	0	0.00%	11	2.31%
BUR	8	3.83%	2	25.00%	0	0.00%	0	0.00%	3	6.52%	0	0.00%	4	2.58%	0	0.00%	17	3.57%
CAM	43	20.57%	2	25.00%	6	14.63%	3	100.00%	10	21.74%	2	66.67%	26	16.77%	2	18.18%	94	19.75%
CAP	0	0.00%	0	0.00%	0	0.00%	0	0.00%	1	2.17%	0	0.00%	1	0.65%	0	0.00%	2	0.42%
CUM	8	3.83%	0	0.00%	0	0.00%	0	0.00%	2	4.35%	0	0.00%	7	4.52%	0	0.00%	17	3.57%
ESS	38	18.18%	0	0.00%	4	9.76%	0	0.00%	4	8.70%	0	0.00%	12	7.74%	1	9.09%	59	12.39%
GLO	0	0.00%	0	0.00%	0	0.00%	0	0.00%	0	0.00%	0	0.00%	1	0.65%	0	0.00%	1	0.21%
HUD	8	3.83%	0	0.00%	0	0.00%	0	0.00%	2	4.35%	0	0.00%	7	4.52%	0	0.00%	17	3.57%
MER	20	9.57%	0	0.00%	4	9.76%	0	0.00%	3	6.52%	1	33.33%	18	11.61%	3	27.27%	49	10.29%
MID	27	12.92%	3	37.50%	6	14.63%	0	0.00%	3	6.52%	0	0.00%	13	8.39%	1	9.09%	53	11.13%
MON	8	3.83%	0	0.00%	3	7.32%	0	0.00%	3	6.52%	0	0.00%	3	1.94%	0	0.00%	17	3.57%
MOR	2	0.96%	0	0.00%	0	0.00%	0	0.00%	0	0.00%	0	0.00%	1	0.65%	0	0.00%	3	0.63%
OCE	7	3.35%	0	0.00%	4	9.76%	0	0.00%	3	6.52%	0	0.00%	8	5.16%	0	0.00%	22	4.62%
PAS	17	8.13%	0	0.00%	9	21.95%	0	0.00%	7	15.22%	0	0.00%	19	12.26%	1	9.09%	53	11.13%
SAL	0	0.00%	0	0.00%	0	0.00%	0	0.00%	1	2.17%	0	0.00%	2	1.29%	0	0.00%	3	0.63%
SOM	1	0.48%	0	0.00%	0	0.00%	0	0.00%	0	0.00%	0	0.00%	1	0.65%	0	0.00%	2	0.42%
SUS	2	0.96%	0	0.00%	0	0.00%	0	0.00%	0	0.00%	0	0.00%	1	0.65%	1	9.09%	4	0.84%
UNI	6	2.87%	1	12.50%	0	0.00%	0	0.00%	3	6.52%	0	0.00%	15	9.68%	1	9.09%	26	5.46%
WAR	0	0.00%	0	0.00%	0	0.00%	0	0.00%	0	0.00%	0	0.00%	1	0.65%	0	0.00%	1	0.21%
OTHER	0	0.00%	0	0.00%	0	0.00%	0	0.00%	0	0.00%	0	0.00%	4	2.58%	0	0.00%	4	0.84%
<b>Total</b>	<b>209</b>	<b>100.00%</b>	<b>8</b>	<b>100.00%</b>	<b>41</b>	<b>100.00%</b>	<b>3</b>	<b>100.00%</b>	<b>46</b>	<b>100.00%</b>	<b>3</b>	<b>100.00%</b>	<b>155</b>	<b>100.00%</b>	<b>11</b>	<b>100.00%</b>	<b>476</b>	<b>100.00%</b>

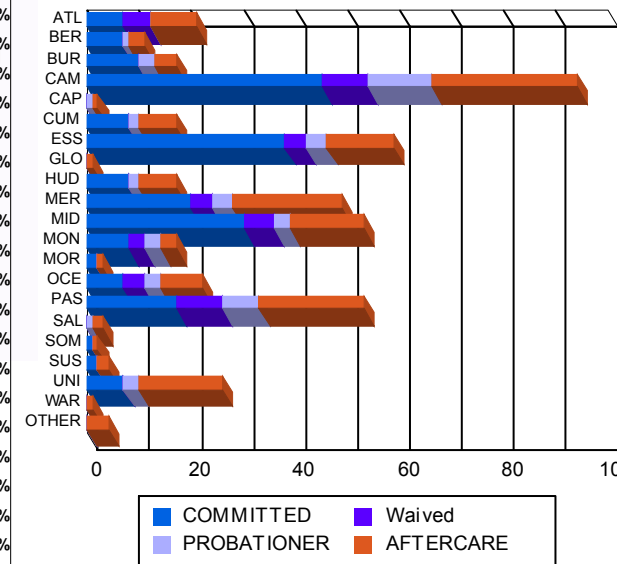
Race/Ethnicity Grouping



Age Grouping



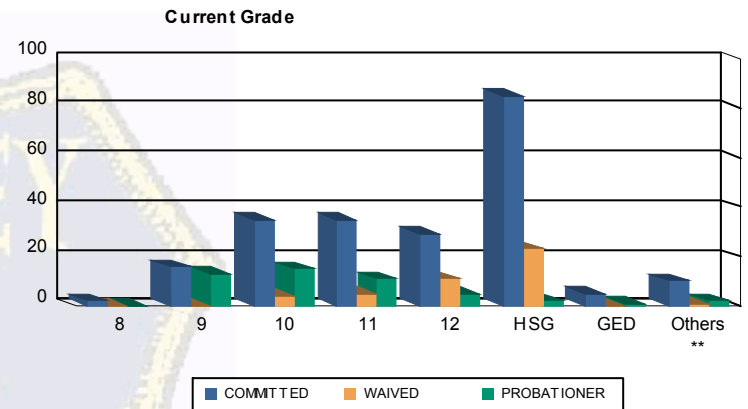
Count of Juveniles By Sentencing County





Juvenile Demographics and Statistics

Current Grade	COMMITTED		WAIVED		PROBATIONER		Total	
	MALE	FEMALE	MALE	FEMALE	MALE	FEMALE		
8	2 (0.96%)	0 (0.00%)	0 (0.00%)	0 (0.00%)	0 (0.00%)	0 (0.00%)	2 (0.65%)	
9	15 (7.18%)	1 (12.50%)	0 (0.00%)	0 (0.00%)	11 (23.91%)	2 (66.67%)	29 (9.35%)	
10	34 (16.27%)	1 (12.50%)	4 (9.76%)	0 (0.00%)	15 (32.61%)	0 (0.00%)	54 (17.42%)	
11	31 (14.83%)	4 (50.00%)	5 (12.20%)	0 (0.00%)	10 (21.74%)	1 (33.33%)	51 (16.45%)	
12	29 (13.88%)	0 (0.00%)	10 (24.39%)	1 (33.33%)	5 (10.87%)	0 (0.00%)	45 (14.52%)	
HSG	84 (40.19%)	1 (12.50%)	21 (51.22%)	2 (66.67%)	2 (4.35%)	0 (0.00%)	110 (35.48%)	
GED	5 (2.39%)	0 (0.00%)	0 (0.00%)	0 (0.00%)	1 (2.17%)	0 (0.00%)	6 (1.94%)	
Others **	9 (4.31%)	1 (12.50%)	1 (2.44%)	0 (0.00%)	2 (4.35%)	0 (0.00%)	13 (4.19%)	
<b>Total</b>	<b>209 (100.00%)</b>	<b>8 (100.00%)</b>	<b>41 (100.00%)</b>	<b>3 (100.00%)</b>	<b>46 (100.00%)</b>	<b>3 (100.00%)</b>	<b>310 (100.00%)</b>	

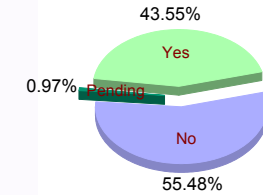


\*\* Includes Aged Out Juveniles and Pending Records

**Special Education Services**

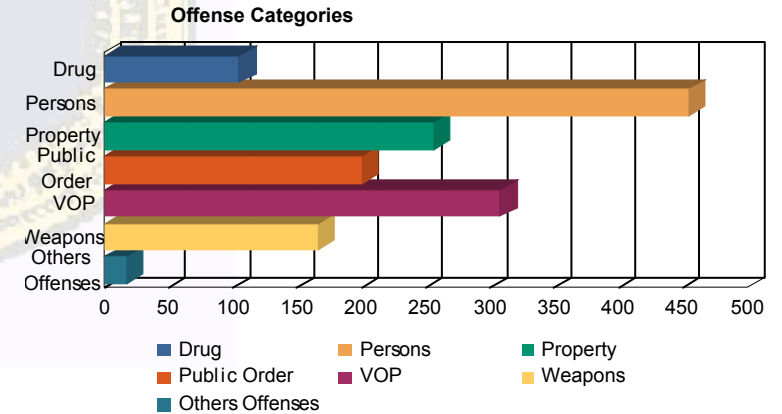
Yes	91 (43.54%)	3 (37.50%)	13 (31.71%)	2 (66.67%)	26 (56.52%)	0 (0.00%)	135 (43.55%)
No	117 (55.98%)	5 (62.50%)	28 (68.29%)	1 (33.33%)	18 (39.13%)	3 (100.00%)	172 (55.48%)
Pending	1 (0.48%)	0 (0.00%)	0 (0.00%)	0 (0.00%)	2 (4.35%)	0 (0.00%)	3 (0.97%)
<b>Total</b>	<b>209 (100.00%)</b>	<b>8 (100.00%)</b>	<b>41 (100.00%)</b>	<b>3 (100.00%)</b>	<b>46 (100.00%)</b>	<b>3 (100.00%)</b>	<b>310 (100.00%)</b>

**Special Education**



**Offense Categories**

Drug	79 (6.34%)	6 (10.71%)	6 (8.22%)	1 (7.14%)	13 (11.93%)	0 (0.00%)	105 (6.97%)
Persons	374 (29.99%)	15 (26.79%)	35 (47.95%)	5 (35.71%)	23 (21.10%)	2 (28.57%)	454 (30.15%)
Property	219 (17.56%)	8 (14.29%)	4 (5.48%)	2 (14.29%)	21 (19.27%)	2 (28.57%)	256 (17.00%)
Public Order	169 (13.55%)	10 (17.86%)	6 (8.22%)	2 (14.29%)	12 (11.01%)	1 (14.29%)	200 (13.28%)
VOP	258 (20.69%)	11 (19.64%)	4 (5.48%)	2 (14.29%)	31 (28.44%)	2 (28.57%)	308 (20.45%)
Weapons	134 (10.75%)	5 (8.93%)	18 (24.66%)	1 (7.14%)	8 (7.34%)	0 (0.00%)	166 (11.02%)
Others Offenses	14 (1.12%)	1 (1.79%)	0 (0.00%)	1 (7.14%)	1 (0.92%)	0 (0.00%)	17 (1.13%)
<b>Total *</b>	<b>1,247 (100.00%)</b>	<b>56 (100.00%)</b>	<b>73 (100.00%)</b>	<b>14 (100.00%)</b>	<b>109 (100.00%)</b>	<b>7 (100.00%)</b>	<b>1,506 (100.00%)</b>



\* Juveniles may have multiple offenses