



Juvenile Demographics and Statistics

Race/ Ethnicity	COMMITTED		WAIVED		PROBATIONER		AFTERCARE		Total									
	MALE	FEMALE	MALE	FEMALE	MALE	FEMALE	MALE	FEMALE										
BLACK	97	77.60%	5	83.33%	54	56.84%	2	100.00%	18	62.07%	3	75.00%	68	73.12%	3	100.00%	250	70.03%
HISPANIC	17	13.60%	0	0.00%	27	28.42%	0	0.00%	8	27.59%	0	0.00%	16	17.20%	0	0.00%	68	19.05%
WHITE	10	8.00%	1	16.67%	11	11.58%	0	0.00%	2	6.90%	1	25.00%	8	8.60%	0	0.00%	33	9.24%
ASIAN	1	0.80%	0	0.00%	3	3.16%	0	0.00%	0	0.00%	0	0.00%	0	0.00%	0	0.00%	4	1.12%
Others	0	0.00%	0	0.00%	0	0.00%	0	0.00%	1	3.45%	0	0.00%	1	1.08%	0	0.00%	2	0.56%
Total	125	100.00%	6	100.00%	95	100.00%	2	100.00%	29	100.00%	4	100.00%	93	100.00%	3	100.00%	357	100.00%

Age

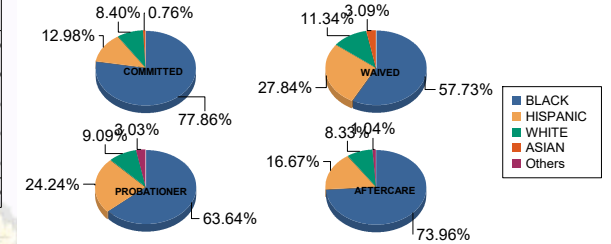
14	0	0.00%	1	16.67%	0	0.00%	0	0.00%	1	3.45%	2	50.00%	0	0.00%	0	0.00%	4	1.12%
15	5	4.00%	0	0.00%	0	0.00%	0	0.00%	5	17.24%	0	0.00%	2	2.15%	1	33.33%	13	3.64%
16	16	12.80%	0	0.00%	0	0.00%	0	0.00%	6	20.69%	2	50.00%	4	4.30%	0	0.00%	28	7.84%
17	25	20.00%	3	50.00%	6	6.32%	0	0.00%	12	41.38%	0	0.00%	6	6.45%	0	0.00%	52	14.57%
18	31	24.80%	1	16.67%	9	9.47%	1	50.00%	4	13.79%	0	0.00%	11	11.83%	0	0.00%	57	15.97%
19	23	18.40%	1	16.67%	23	24.21%	0	0.00%	1	3.45%	0	0.00%	10	10.75%	1	33.33%	59	16.53%
20 and Above	25	20.00%	0	0.00%	57	60.00%	1	50.00%	0	0.00%	0	0.00%	60	64.52%	1	33.33%	144	40.34%
Total	125	100.00%	6	100.00%	95	100.00%	2	100.00%	29	100.00%	4	100.00%	93	100.00%	3	100.00%	357	100.00%

Average Age	18.34	17.00	20.21	19.50	16.55	15.00	21.55	19.67	19.48
-------------	-------	-------	-------	-------	-------	-------	-------	-------	-------

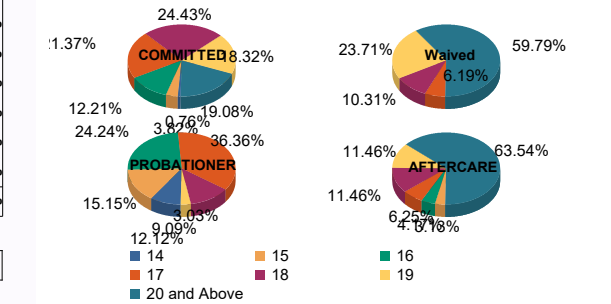
Sentencing County

ATL	5	4.00%	0	0.00%	8	8.42%	0	0.00%	6	20.69%	1	25.00%	3	3.23%	0	0.00%	23	6.44%
BER	5	4.00%	0	0.00%	0	0.00%	0	0.00%	0	0.00%	0	0.00%	4	4.30%	0	0.00%	9	2.52%
BUR	5	4.00%	1	16.67%	2	2.11%	0	0.00%	0	0.00%	0	0.00%	4	4.30%	0	0.00%	12	3.36%
CAM	25	20.00%	0	0.00%	6	6.32%	1	50.00%	4	13.79%	3	75.00%	14	15.05%	2	66.67%	55	15.41%
CAP	1	0.80%	0	0.00%	0	0.00%	0	0.00%	0	0.00%	0	0.00%	0	0.00%	0	0.00%	1	0.28%
CUM	3	2.40%	0	0.00%	2	2.11%	0	0.00%	1	3.45%	0	0.00%	3	3.23%	0	0.00%	9	2.52%
ESS	27	21.60%	3	50.00%	6	6.32%	0	0.00%	4	13.79%	0	0.00%	20	21.51%	0	0.00%	60	16.81%
GLO	3	2.40%	0	0.00%	1	1.05%	0	0.00%	0	0.00%	0	0.00%	1	1.08%	0	0.00%	5	1.40%
HUD	7	5.60%	1	16.67%	4	4.21%	0	0.00%	1	3.45%	0	0.00%	6	6.45%	0	0.00%	19	5.32%
HUN	0	0.00%	0	0.00%	0	0.00%	0	0.00%	0	0.00%	0	0.00%	1	1.08%	0	0.00%	1	0.28%
MER	5	4.00%	0	0.00%	6	6.32%	0	0.00%	0	0.00%	0	0.00%	3	3.23%	0	0.00%	14	3.92%
MID	9	7.20%	0	0.00%	25	26.32%	1	50.00%	0	0.00%	0	0.00%	12	12.90%	0	0.00%	47	13.17%
MON	5	4.00%	0	0.00%	4	4.21%	0	0.00%	3	10.34%	0	0.00%	1	1.08%	0	0.00%	13	3.64%
MOR	1	0.80%	0	0.00%	0	0.00%	0	0.00%	0	0.00%	0	0.00%	0	0.00%	0	0.00%	1	0.28%
OCE	3	2.40%	0	0.00%	2	2.11%	0	0.00%	4	13.79%	0	0.00%	3	3.23%	1	33.33%	13	3.64%
PAS	7	5.60%	0	0.00%	19	20.00%	0	0.00%	3	10.34%	0	0.00%	9	9.68%	0	0.00%	38	10.64%
SAL	1	0.80%	0	0.00%	3	3.16%	0	0.00%	0	0.00%	0	0.00%	0	0.00%	0	0.00%	4	1.12%
SOM	0	0.00%	1	16.67%	0	0.00%	0	0.00%	0	0.00%	0	0.00%	0	0.00%	0	0.00%	1	0.28%
SUS	0	0.00%	0	0.00%	1	1.05%	0	0.00%	0	0.00%	0	0.00%	0	0.00%	0	0.00%	1	0.28%
UNI	13	10.40%	0	0.00%	6	6.32%	0	0.00%	1	3.45%	0	0.00%	6	6.45%	0	0.00%	26	7.28%
WAR	0	0.00%	0	0.00%	0	0.00%	0	0.00%	2	6.90%	0	0.00%	0	0.00%	0	0.00%	2	0.56%
OTHER	0	0.00%	0	0.00%	0	0.00%	0	0.00%	0	0.00%	0	0.00%	3	3.23%	0	0.00%	3	0.84%
Total	125	100.00%	6	100.00%	95	100.00%	2	100.00%	29	100.00%	4	100.00%	93	100.00%	3	100.00%	357	100.00%

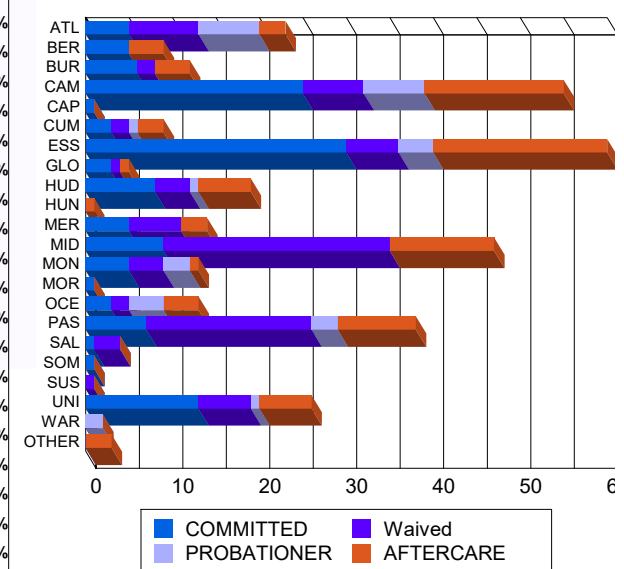
Race/Ethnicity Grouping



Age Grouping



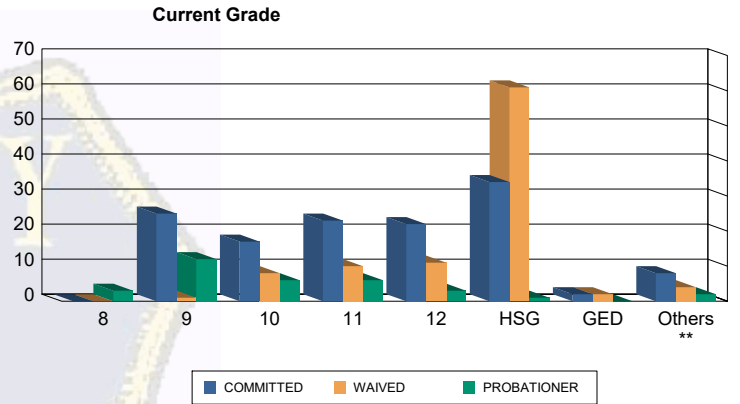
Count of Juveniles By Sentencing County





Juvenile Demographics and Statistics

Current Grade	COMMITTED		WAIVED		PROBATIONER		Total
	MALE	FEMALE	MALE	FEMALE	MALE	FEMALE	
8	0 (0.00%)	0 (0.00%)	0 (0.00%)	0 (0.00%)	2 (6.90%)	1 (25.00%)	3 (1.15%)
9	24 (19.20%)	1 (16.67%)	1 (1.05%)	0 (0.00%)	10 (34.48%)	2 (50.00%)	38 (14.56%)
10	17 (13.60%)	0 (0.00%)	8 (8.42%)	0 (0.00%)	6 (20.69%)	0 (0.00%)	31 (11.88%)
11	20 (16.00%)	3 (50.00%)	9 (9.47%)	1 (50.00%)	5 (17.24%)	1 (25.00%)	39 (14.94%)
12	20 (16.00%)	2 (33.33%)	11 (11.58%)	0 (0.00%)	3 (10.34%)	0 (0.00%)	36 (13.79%)
HSG	34 (27.20%)	0 (0.00%)	60 (63.16%)	1 (50.00%)	1 (3.45%)	0 (0.00%)	96 (36.78%)
GED	2 (1.60%)	0 (0.00%)	2 (2.11%)	0 (0.00%)	0 (0.00%)	0 (0.00%)	4 (1.53%)
Others **	8 (6.40%)	0 (0.00%)	4 (4.21%)	0 (0.00%)	2 (6.90%)	0 (0.00%)	14 (5.36%)
Total	125 (100.00%)	6 (100.00%)	95 (100.00%)	2 (100.00%)	29 (100.00%)	4 (100.00%)	261 (100.00%)

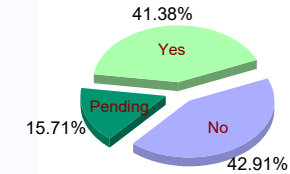


** Includes Aged Out Juveniles and Pending Records

Special Education Services

Yes	53 (42.40%)	5 (83.33%)	36 (37.89%)	1 (50.00%)	13 (44.83%)	0 (0.00%)	108 (41.38%)
No	57 (45.60%)	1 (16.67%)	35 (36.84%)	1 (50.00%)	14 (48.28%)	4 (100.00%)	112 (42.91%)
Pending	15 (12.00%)	0 (0.00%)	24 (25.26%)	0 (0.00%)	2 (6.90%)	0 (0.00%)	41 (15.71%)
Total	125 (100.00%)	6 (100.00%)	95 (100.00%)	2 (100.00%)	29 (100.00%)	4 (100.00%)	261 (100.00%)

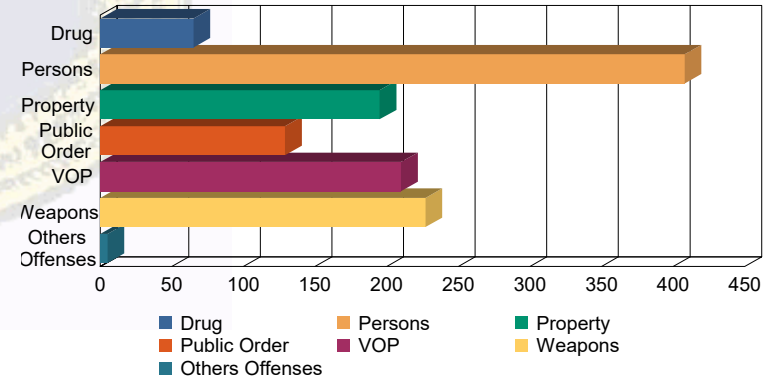
Special Education



Offense Categories

Drug	48 (5.91%)	0 (0.00%)	10 (3.42%)	0 (0.00%)	7 (7.45%)	0 (0.00%)	65 (5.25%)
Persons	221 (27.22%)	9 (34.62%)	150 (51.37%)	3 (100.00%)	24 (25.53%)	1 (8.33%)	408 (32.93%)
Property	138 (17.00%)	4 (15.38%)	32 (10.96%)	0 (0.00%)	18 (19.15%)	3 (25.00%)	195 (15.74%)
Public Order	94 (11.58%)	5 (19.23%)	21 (7.19%)	0 (0.00%)	6 (6.38%)	3 (25.00%)	129 (10.41%)
VOP	154 (18.97%)	4 (15.38%)	32 (10.96%)	0 (0.00%)	16 (17.02%)	4 (33.33%)	210 (16.95%)
Weapons	155 (19.09%)	4 (15.38%)	46 (15.75%)	0 (0.00%)	21 (22.34%)	1 (8.33%)	227 (18.32%)
Others Offenses	2 (0.25%)	0 (0.00%)	1 (0.34%)	0 (0.00%)	2 (2.13%)	0 (0.00%)	5 (0.40%)
Total *	812 (100.00%)	26 (100.00%)	292 (100.00%)	3 (100.00%)	94 (100.00%)	12 (100.00%)	1,239 (100.00%)

Offense Categories



* Juveniles may have multiple offenses