



Juvenile Demographics and Statistics

Race/ Ethnicity	COMMITTED		WAIVED		PROBATIONER		AFTERCARE		Total									
	MALE	FEMALE	MALE	FEMALE	MALE	FEMALE	MALE	FEMALE										
BLACK	95	76.61%	5	83.33%	55	57.29%	2	100.00%	19	65.52%	3	75.00%	70	73.68%	3	100.00%	252	70.19%
HISPANIC	18	14.52%	0	0.00%	27	28.13%	0	0.00%	7	24.14%	0	0.00%	16	16.84%	0	0.00%	68	18.94%
WHITE	10	8.06%	1	16.67%	11	11.46%	0	0.00%	2	6.90%	1	25.00%	8	8.42%	0	0.00%	33	9.19%
ASIAN	1	0.81%	0	0.00%	3	3.13%	0	0.00%	0	0.00%	0	0.00%	0	0.00%	0	0.00%	4	1.11%
Others	0	0.00%	0	0.00%	0	0.00%	0	0.00%	1	3.45%	0	0.00%	1	1.05%	0	0.00%	2	0.56%
Total	124	100.00%	6	100.00%	96	100.00%	2	100.00%	29	100.00%	4	100.00%	95	100.00%	3	100.00%	359	100.00%

Age

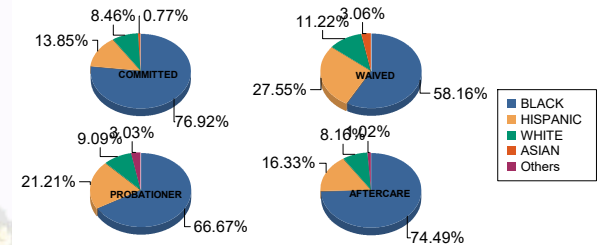
14	0	0.00%	1	16.67%	0	0.00%	0	0.00%	1	3.45%	2	50.00%	0	0.00%	0	0.00%	4	1.11%
15	7	5.65%	0	0.00%	0	0.00%	0	0.00%	5	17.24%	0	0.00%	2	2.11%	1	33.33%	15	4.18%
16	14	11.29%	0	0.00%	0	0.00%	0	0.00%	7	24.14%	2	50.00%	5	5.26%	0	0.00%	28	7.80%
17	26	20.97%	3	50.00%	6	6.25%	0	0.00%	12	41.38%	0	0.00%	5	5.26%	0	0.00%	52	14.48%
18	31	25.00%	1	16.67%	9	9.38%	1	50.00%	3	10.34%	0	0.00%	11	11.58%	0	0.00%	56	15.60%
19	22	17.74%	1	16.67%	24	25.00%	0	0.00%	1	3.45%	0	0.00%	11	11.58%	1	33.33%	60	16.71%
20 and Above	24	19.35%	0	0.00%	57	59.38%	1	50.00%	0	0.00%	0	0.00%	61	64.21%	1	33.33%	144	40.11%
Total	124	100.00%	6	100.00%	96	100.00%	2	100.00%	29	100.00%	4	100.00%	95	100.00%	3	100.00%	359	100.00%

Average Age	18.27	17.00	20.20	19.50	16.48	15.00	21.54	19.67	19.47
-------------	-------	-------	-------	-------	-------	-------	-------	-------	-------

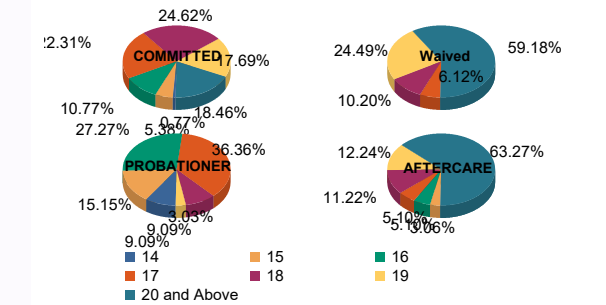
Sentencing County

ATL	5	4.03%	0	0.00%	8	8.33%	0	0.00%	7	24.14%	1	25.00%	3	3.16%	0	0.00%	24	6.69%
BER	5	4.03%	0	0.00%	0	0.00%	0	0.00%	0	0.00%	0	0.00%	4	4.21%	0	0.00%	9	2.51%
BUR	5	4.03%	1	16.67%	2	2.08%	0	0.00%	0	0.00%	0	0.00%	4	4.21%	0	0.00%	12	3.34%
CAM	24	19.35%	0	0.00%	6	6.25%	1	50.00%	3	10.34%	3	75.00%	15	15.79%	2	66.67%	54	15.04%
CAP	1	0.81%	0	0.00%	0	0.00%	0	0.00%	0	0.00%	0	0.00%	0	0.00%	0	0.00%	1	0.28%
CUM	3	2.42%	0	0.00%	2	2.08%	0	0.00%	1	3.45%	0	0.00%	3	3.16%	0	0.00%	9	2.51%
ESS	26	20.97%	3	50.00%	6	6.25%	0	0.00%	4	13.79%	0	0.00%	21	22.11%	0	0.00%	60	16.71%
GLO	3	2.42%	0	0.00%	1	1.04%	0	0.00%	0	0.00%	0	0.00%	1	1.05%	0	0.00%	5	1.39%
HUD	7	5.65%	1	16.67%	4	4.17%	0	0.00%	1	3.45%	0	0.00%	6	6.32%	0	0.00%	19	5.29%
HUN	0	0.00%	0	0.00%	0	0.00%	0	0.00%	0	0.00%	0	0.00%	1	1.05%	0	0.00%	1	0.28%
MER	5	4.03%	0	0.00%	6	6.25%	0	0.00%	0	0.00%	0	0.00%	3	3.16%	0	0.00%	14	3.90%
MID	10	8.06%	0	0.00%	26	27.08%	1	50.00%	0	0.00%	0	0.00%	12	12.63%	0	0.00%	49	13.65%
MON	5	4.03%	0	0.00%	4	4.17%	0	0.00%	3	10.34%	0	0.00%	1	1.05%	0	0.00%	13	3.62%
MOR	1	0.81%	0	0.00%	0	0.00%	0	0.00%	0	0.00%	0	0.00%	0	0.00%	0	0.00%	1	0.28%
OCE	3	2.42%	0	0.00%	2	2.08%	0	0.00%	4	13.79%	0	0.00%	3	3.16%	1	33.33%	13	3.62%
PAS	7	5.65%	0	0.00%	19	19.79%	0	0.00%	3	10.34%	0	0.00%	9	9.47%	0	0.00%	38	10.58%
SAL	1	0.81%	0	0.00%	3	3.13%	0	0.00%	0	0.00%	0	0.00%	0	0.00%	0	0.00%	4	1.11%
SOM	0	0.00%	1	16.67%	0	0.00%	0	0.00%	0	0.00%	0	0.00%	0	0.00%	0	0.00%	1	0.28%
SUS	0	0.00%	0	0.00%	1	1.04%	0	0.00%	0	0.00%	0	0.00%	0	0.00%	0	0.00%	1	0.28%
UNI	13	10.48%	0	0.00%	6	6.25%	0	0.00%	1	3.45%	0	0.00%	6	6.32%	0	0.00%	26	7.24%
WAR	0	0.00%	0	0.00%	0	0.00%	0	0.00%	2	6.90%	0	0.00%	0	0.00%	0	0.00%	2	0.56%
OTHER	0	0.00%	0	0.00%	0	0.00%	0	0.00%	0	0.00%	0	0.00%	3	3.16%	0	0.00%	3	0.84%
Total	124	100.00%	6	100.00%	96	100.00%	2	100.00%	29	100.00%	4	100.00%	95	100.00%	3	100.00%	359	100.00%

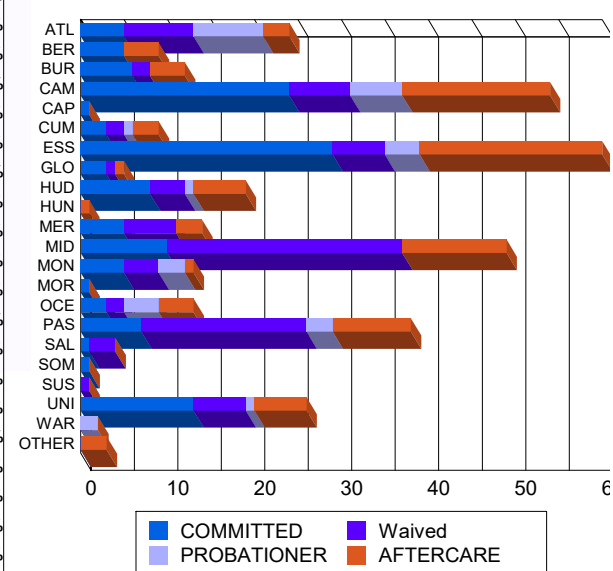
Race/Ethnicity Grouping



Age Grouping



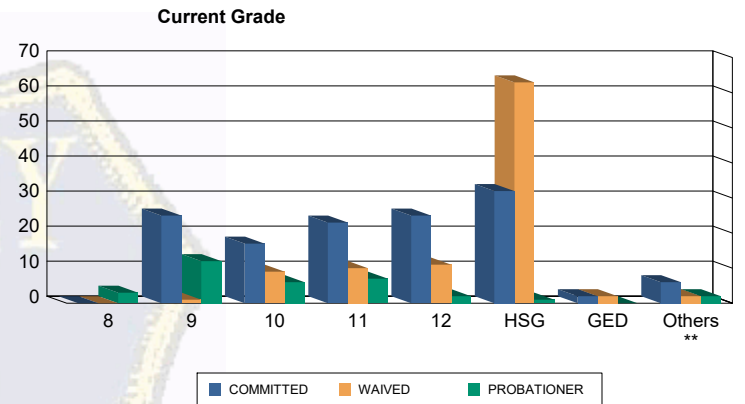
Count of Juveniles By Sentencing County





Juvenile Demographics and Statistics

Current Grade	COMMITTED		WAIVED		PROBATIONER		Total
	MALE	FEMALE	MALE	FEMALE	MALE	FEMALE	
8	0 (0.00%)	0 (0.00%)	0 (0.00%)	0 (0.00%)	2 (6.90%)	1 (25.00%)	3 (1.15%)
9	24 (19.35%)	1 (16.67%)	1 (1.04%)	0 (0.00%)	10 (34.48%)	2 (50.00%)	38 (14.56%)
10	17 (13.71%)	0 (0.00%)	9 (9.38%)	0 (0.00%)	6 (20.69%)	0 (0.00%)	32 (12.26%)
11	20 (16.13%)	3 (50.00%)	9 (9.38%)	1 (50.00%)	6 (20.69%)	1 (25.00%)	40 (15.33%)
12	23 (18.55%)	2 (33.33%)	11 (11.46%)	0 (0.00%)	2 (6.90%)	0 (0.00%)	38 (14.56%)
HSG	32 (25.81%)	0 (0.00%)	62 (64.58%)	1 (50.00%)	1 (3.45%)	0 (0.00%)	96 (36.78%)
GED	2 (1.61%)	0 (0.00%)	2 (2.08%)	0 (0.00%)	0 (0.00%)	0 (0.00%)	4 (1.53%)
Others **	6 (4.84%)	0 (0.00%)	2 (2.08%)	0 (0.00%)	2 (6.90%)	0 (0.00%)	10 (3.83%)
Total	124 (100.00%)	6 (100.00%)	96 (100.00%)	2 (100.00%)	29 (100.00%)	4 (100.00%)	261 (100.00%)

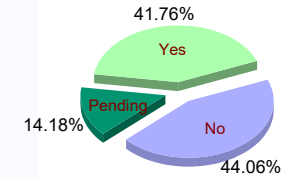


** Includes Aged Out Juveniles and Pending Records

Special Education Services

Yes	53 (42.74%)	5 (83.33%)	37 (38.54%)	1 (50.00%)	13 (44.83%)	0 (0.00%)	109 (41.76%)
No	59 (47.58%)	1 (16.67%)	36 (37.50%)	1 (50.00%)	14 (48.28%)	4 (100.00%)	115 (44.06%)
Pending	12 (9.68%)	0 (0.00%)	23 (23.96%)	0 (0.00%)	2 (6.90%)	0 (0.00%)	37 (14.18%)
Total	124 (100.00%)	6 (100.00%)	96 (100.00%)	2 (100.00%)	29 (100.00%)	4 (100.00%)	261 (100.00%)

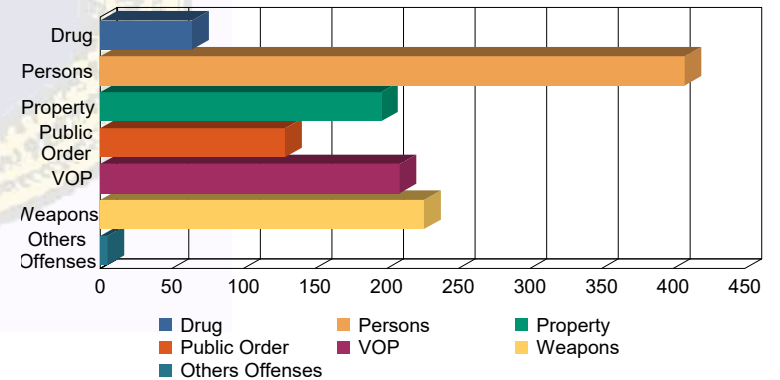
Special Education



Offense Categories

Drug	48 (5.93%)	0 (0.00%)	10 (3.40%)	0 (0.00%)	6 (6.52%)	0 (0.00%)	64 (5.17%)
Persons	220 (27.16%)	9 (34.62%)	151 (51.36%)	3 (100.00%)	24 (26.09%)	1 (8.33%)	408 (32.98%)
Property	138 (17.04%)	4 (15.38%)	32 (10.88%)	0 (0.00%)	19 (20.65%)	3 (25.00%)	196 (15.84%)
Public Order	94 (11.60%)	5 (19.23%)	21 (7.14%)	0 (0.00%)	6 (6.52%)	3 (25.00%)	129 (10.43%)
VOP	153 (18.89%)	4 (15.38%)	33 (11.22%)	0 (0.00%)	15 (16.30%)	4 (33.33%)	209 (16.90%)
Weapons	155 (19.14%)	4 (15.38%)	46 (15.65%)	0 (0.00%)	20 (21.74%)	1 (8.33%)	226 (18.27%)
Others Offenses	2 (0.25%)	0 (0.00%)	1 (0.34%)	0 (0.00%)	2 (2.17%)	0 (0.00%)	5 (0.40%)
Total *	810 (100.00%)	26 (100.00%)	294 (100.00%)	3 (100.00%)	92 (100.00%)	12 (100.00%)	1,237 (100.00%)

Offense Categories



* Juveniles may have multiple offenses