



Juvenile Demographics and Statistics

Race/ Ethnicity	COMMITTED		WAIVED		PROBATIONER		AFTERCARE		Total									
	MALE	FEMALE	MALE	FEMALE	MALE	FEMALE	MALE	FEMALE										
BLACK	94	77.05%	5	83.33%	55	57.29%	2	100.00%	18	66.67%	3	75.00%	72	73.47%	3	100.00%	252	70.39%
HISPANIC	18	14.75%	0	0.00%	27	28.13%	0	0.00%	6	22.22%	0	0.00%	17	17.35%	0	0.00%	68	18.99%
WHITE	9	7.38%	1	16.67%	11	11.46%	0	0.00%	2	7.41%	1	25.00%	8	8.16%	0	0.00%	32	8.94%
ASIAN	1	0.82%	0	0.00%	3	3.13%	0	0.00%	0	0.00%	0	0.00%	0	0.00%	0	0.00%	4	1.12%
Others	0	0.00%	0	0.00%	0	0.00%	0	0.00%	1	3.70%	0	0.00%	1	1.02%	0	0.00%	2	0.56%
Total	122	100.00%	6	100.00%	96	100.00%	2	100.00%	27	100.00%	4	100.00%	98	100.00%	3	100.00%	358	100.00%

Age

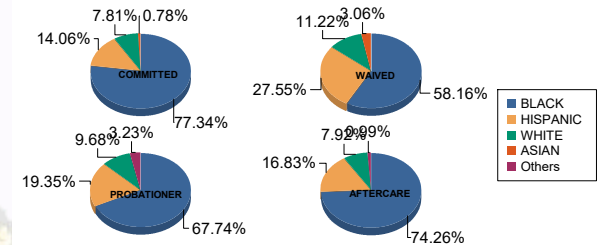
14	0	0.00%	1	16.67%	0	0.00%	0	0.00%	1	3.70%	2	50.00%	0	0.00%	0	0.00%	4	1.12%
15	7	5.74%	0	0.00%	0	0.00%	0	0.00%	5	18.52%	0	0.00%	2	2.04%	1	33.33%	15	4.19%
16	13	10.66%	0	0.00%	0	0.00%	0	0.00%	6	22.22%	2	50.00%	7	7.14%	0	0.00%	28	7.82%
17	26	21.31%	3	50.00%	6	6.25%	0	0.00%	11	40.74%	0	0.00%	5	5.10%	0	0.00%	51	14.25%
18	31	25.41%	1	16.67%	9	9.38%	1	50.00%	3	11.11%	0	0.00%	11	11.22%	0	0.00%	56	15.64%
19	21	17.21%	1	16.67%	24	25.00%	0	0.00%	1	3.70%	0	0.00%	13	13.27%	1	33.33%	61	17.04%
20 and Above	24	19.67%	0	0.00%	57	59.38%	1	50.00%	0	0.00%	0	0.00%	60	61.22%	1	33.33%	143	39.94%
Total	122	100.00%	6	100.00%	96	100.00%	2	100.00%	27	100.00%	4	100.00%	98	100.00%	3	100.00%	358	100.00%

Average Age	18.29	17.00	20.20	19.50	16.48	15.00	21.22	19.67	19.43
-------------	-------	-------	-------	-------	-------	-------	-------	-------	-------

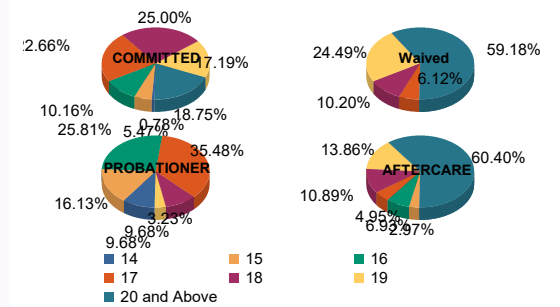
Sentencing County

ATL	5	4.10%	0	0.00%	8	8.33%	0	0.00%	8	29.63%	1	25.00%	3	3.06%	0	0.00%	25	6.98%
BER	5	4.10%	0	0.00%	0	0.00%	0	0.00%	0	0.00%	0	0.00%	4	4.08%	0	0.00%	9	2.51%
BUR	5	4.10%	1	16.67%	2	2.08%	0	0.00%	0	0.00%	0	0.00%	4	4.08%	0	0.00%	12	3.35%
CAM	25	20.49%	0	0.00%	6	6.25%	1	50.00%	3	11.11%	3	75.00%	15	15.31%	2	66.67%	55	15.36%
CAP	1	0.82%	0	0.00%	0	0.00%	0	0.00%	0	0.00%	0	0.00%	0	0.00%	0	0.00%	1	0.28%
CUM	3	2.46%	0	0.00%	2	2.08%	0	0.00%	0	0.00%	0	0.00%	3	3.06%	0	0.00%	8	2.23%
ESS	24	19.67%	3	50.00%	6	6.25%	0	0.00%	4	14.81%	0	0.00%	23	23.47%	0	0.00%	60	16.76%
GLO	2	1.64%	0	0.00%	1	1.04%	0	0.00%	0	0.00%	0	0.00%	2	2.04%	0	0.00%	5	1.40%
HUD	7	5.74%	1	16.67%	4	4.17%	0	0.00%	1	3.70%	0	0.00%	6	6.12%	0	0.00%	19	5.31%
HUN	0	0.00%	0	0.00%	0	0.00%	0	0.00%	0	0.00%	0	0.00%	1	1.02%	0	0.00%	1	0.28%
MER	5	4.10%	0	0.00%	6	6.25%	0	0.00%	0	0.00%	0	0.00%	3	3.06%	0	0.00%	14	3.91%
MID	9	7.38%	0	0.00%	26	27.08%	1	50.00%	0	0.00%	0	0.00%	12	12.24%	0	0.00%	48	13.41%
MON	6	4.92%	0	0.00%	4	4.17%	0	0.00%	2	7.41%	0	0.00%	1	1.02%	0	0.00%	13	3.63%
MOR	1	0.82%	0	0.00%	0	0.00%	0	0.00%	0	0.00%	0	0.00%	0	0.00%	0	0.00%	1	0.28%
OCE	3	2.46%	0	0.00%	2	2.08%	0	0.00%	4	14.81%	0	0.00%	3	3.06%	1	33.33%	13	3.63%
PAS	7	5.74%	0	0.00%	19	19.79%	0	0.00%	3	11.11%	0	0.00%	9	9.18%	0	0.00%	38	10.61%
SAL	1	0.82%	0	0.00%	3	3.13%	0	0.00%	0	0.00%	0	0.00%	0	0.00%	0	0.00%	4	1.12%
SOM	0	0.00%	1	16.67%	0	0.00%	0	0.00%	0	0.00%	0	0.00%	0	0.00%	0	0.00%	1	0.28%
SUS	0	0.00%	0	0.00%	1	1.04%	0	0.00%	0	0.00%	0	0.00%	0	0.00%	0	0.00%	1	0.28%
UNI	13	10.66%	0	0.00%	6	6.25%	0	0.00%	0	0.00%	0	0.00%	6	6.12%	0	0.00%	25	6.98%
WAR	0	0.00%	0	0.00%	0	0.00%	0	0.00%	2	7.41%	0	0.00%	0	0.00%	0	0.00%	2	0.56%
OTHER	0	0.00%	0	0.00%	0	0.00%	0	0.00%	0	0.00%	0	0.00%	3	3.06%	0	0.00%	3	0.84%
Total	122	100.00%	6	100.00%	96	100.00%	2	100.00%	27	100.00%	4	100.00%	98	100.00%	3	100.00%	358	100.00%

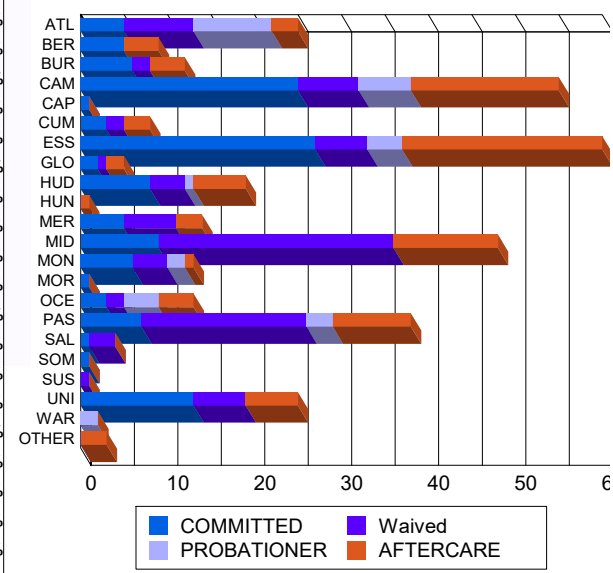
Race/Ethnicity Grouping



Age Grouping



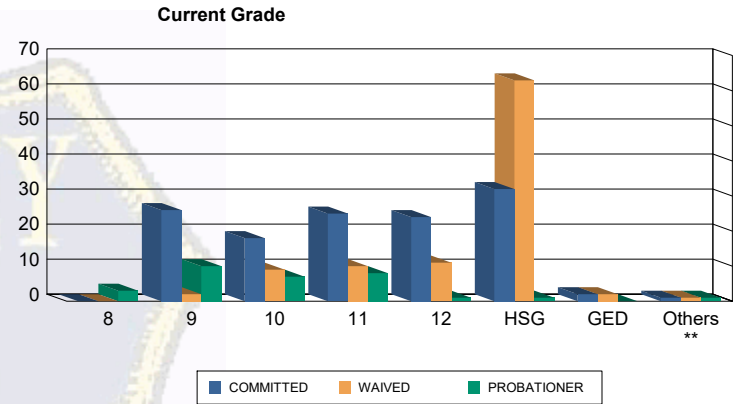
Count of Juveniles By Sentencing County





Juvenile Demographics and Statistics

Current Grade	COMMITTED		WAIVED		PROBATIONER		Total
	MALE	FEMALE	MALE	FEMALE	MALE	FEMALE	
8	0 (0.00%)	0 (0.00%)	0 (0.00%)	0 (0.00%)	2 (7.41%)	1 (25.00%)	3 (1.17%)
9	25 (20.49%)	1 (16.67%)	2 (2.08%)	0 (0.00%)	8 (29.63%)	2 (50.00%)	38 (14.79%)
10	18 (14.75%)	0 (0.00%)	9 (9.38%)	0 (0.00%)	7 (25.93%)	0 (0.00%)	34 (13.23%)
11	22 (18.03%)	3 (50.00%)	9 (9.38%)	1 (50.00%)	7 (25.93%)	1 (25.00%)	43 (16.73%)
12	22 (18.03%)	2 (33.33%)	11 (11.46%)	0 (0.00%)	1 (3.70%)	0 (0.00%)	36 (14.01%)
HSG	32 (26.23%)	0 (0.00%)	62 (64.58%)	1 (50.00%)	1 (3.70%)	0 (0.00%)	96 (37.35%)
GED	2 (1.64%)	0 (0.00%)	2 (2.08%)	0 (0.00%)	0 (0.00%)	0 (0.00%)	4 (1.56%)
Others **	1 (0.82%)	0 (0.00%)	1 (1.04%)	0 (0.00%)	1 (3.70%)	0 (0.00%)	3 (1.17%)
Total	122 (100.00%)	6 (100.00%)	96 (100.00%)	2 (100.00%)	27 (100.00%)	4 (100.00%)	257 (100.00%)

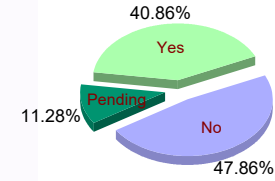


** Includes Aged Out Juveniles and Pending Records

Special Education Services

Yes	52 (42.62%)	5 (83.33%)	37 (38.54%)	1 (50.00%)	10 (37.04%)	0 (0.00%)	105 (40.86%)
No	64 (52.46%)	1 (16.67%)	37 (38.54%)	1 (50.00%)	16 (59.26%)	4 (100.00%)	123 (47.86%)
Pending	6 (4.92%)	0 (0.00%)	22 (22.92%)	0 (0.00%)	1 (3.70%)	0 (0.00%)	29 (11.28%)
Total	122 (100.00%)	6 (100.00%)	96 (100.00%)	2 (100.00%)	27 (100.00%)	4 (100.00%)	257 (100.00%)

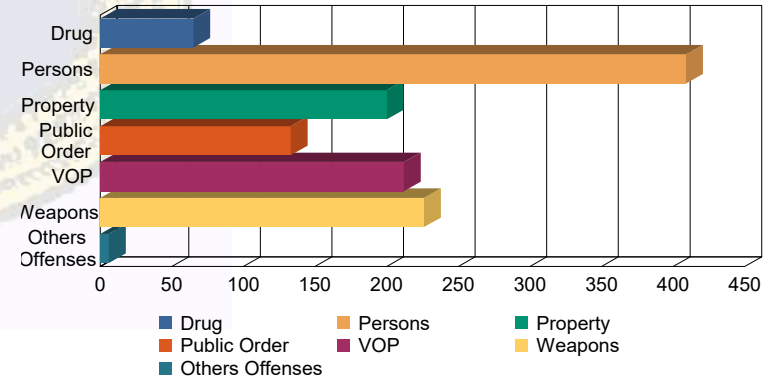
Special Education



Offense Categories

Drug	49 (5.93%)	0 (0.00%)	10 (3.40%)	0 (0.00%)	6 (6.74%)	0 (0.00%)	65 (5.20%)
Persons	221 (26.72%)	9 (34.62%)	151 (51.36%)	3 (100.00%)	24 (26.97%)	1 (8.33%)	409 (32.69%)
Property	141 (17.05%)	4 (15.38%)	32 (10.88%)	0 (0.00%)	20 (22.47%)	3 (25.00%)	200 (15.99%)
Public Order	97 (11.73%)	5 (19.23%)	21 (7.14%)	0 (0.00%)	7 (7.87%)	3 (25.00%)	133 (10.63%)
VOP	158 (19.11%)	4 (15.38%)	33 (11.22%)	0 (0.00%)	13 (14.61%)	4 (33.33%)	212 (16.95%)
Weapons	158 (19.11%)	4 (15.38%)	46 (15.65%)	0 (0.00%)	17 (19.10%)	1 (8.33%)	226 (18.07%)
Others Offenses	3 (0.36%)	0 (0.00%)	1 (0.34%)	0 (0.00%)	2 (2.25%)	0 (0.00%)	6 (0.48%)
Total *	827 (100.00%)	26 (100.00%)	294 (100.00%)	3 (100.00%)	89 (100.00%)	12 (100.00%)	1,251 (100.00%)

Offense Categories



* Juveniles may have multiple offenses