

CMP POLICY & IMPLEMENTATION COMMITTEE MEETING

This meeting was conducted both remotely and in-person.
The public could view/comment through Pinelands Commission YouTube link:

www.youtube.com/c/PinelandsCommission

Richard J. Sullivan Center
15C Springfield Rd
New Lisbon, New Jersey 08064
February 23, 2024 – 9:30 a.m.

MINUTES

Members in Attendance: Chair Laura E. Matos, Alan W. Avery, Jr., Theresa Lettman, Mark S. Lohbauer, Douglas Wallner

Members Absent: Jerome H. Irick

Other Commissioners Present: Jessica Rittler Sanchez (*as a non-member of the Committee, Commissioner Rittler Sanchez did not vote on any matter*)

Staff Present: Gina Berg, John Bunnell, Ernest Deman, April Field, Susan R. Grogan, Brad Lanute, Paul Leakan, Stacey P. Roth, and Steven Simone. Also in attendance was Alexis Franklin with the Governor's Authorities Unit.

1. Call to Order

Chair Matos called the meeting to order at 9:41 a.m.

2. Adoption of minutes from the November 29, 2023 CMP Policy & Implementation Committee Meeting

Commissioner Wallner moved the adoption of the November 29, 2023 meeting minutes. Commissioner Avery seconded the motion. Commissioners Avery, Lohbauer, Matos and Wallner voted to adopt the minutes. Commissioner Lettman abstained. The motion passed.

3. Adoption of minutes from the January 26, 2024 CMP Policy & Implementation Committee Meeting

Commissioner Lohbauer moved the adoption of the January 26, 2024 meeting minutes. Commissioner Lettman seconded the motion. The motion passed unanimously.

4. Presentation on Evesham Memorandum of Agreement (MOA) – Black Run Preserve Trails

Executive Director Susan R. Grogan introduced Kevin Rijs, the Community Development Director for Evesham Township, who then presented an overview of the project that will require a deviation Memorandum of Agreement from the Commission to proceed. Mr. Rijs introduced

other representatives of Evesham Township and the Pinelands Preservation Alliance who are involved in the project. He introduced Rich Kerr, Evesham Township Superintendent of Sports Turf and Open Space, Sean Kane-Holland, Pinelands Preservation Alliance, Carleton Montgomery, Pinelands Preservation Alliance, and Tim Staszewski, from Remington and Vernick (Township Engineer.)

Mr. Rijs presented a proposal for improving the trails at the Black Run Preserve so that they are compliant with the American Disabilities Act (ADA). He said the improvements would include approximately 4,000 linear feet of trail grading and stabilization with crushed stone, installation of a bridge to cross a former levee that has been breached, and creation of two ADA-compliant parking areas. (The presentation is available [here](#).) The project would also map and document trails and include improved signage to encourage the public to stay on and only use designated trails. He said that the existing 700+ acre municipal park draws people not only from Evesham Township but also regionally. He noted that the Township had received a stewardship grant to maintain the trails. He said that the Pinelands Preservation Alliance and the Friends of Black Run Preserve will be partners in implementing the improvements. He said extensive wetlands and wetlands buffers cover much of the park but particularly in the northwest section where the trail improvements are planned. Improvements to the trails that are located in wetlands or wetlands buffers would not be permitted under the standards of the Pinelands Comprehensive Management Plan (CMP) and for that reason the Township is seeking a deviation MOA from the Commission. He said much of the work will be completed by the Friends of the Black Run Preserve group on a volunteer basis.

Sean Kane-Holland reviewed the importance of the project to the for inclusivity and accessibility to people with disabilities in Evesham Township. He said more than 4,000 people with disabilities live in Evesham Township. He said the park will be improved with educational kiosks and signage. He showed examples of similar trails at county and state parks.

Kevin Rijs continued noting that offset opportunities exist onsite. Restoration of the Municipal Utilities infiltration basins and the creation of rain gardens are being considered. It is approximately eight acres.

ED Grogan asked to review the map where the proposed trail improvements would occur. She said the map shows that most of the trail is in wetlands and wetlands buffers. For that reason, the MOA process is necessary rather than a traditional Public Development Approval and will allow for grading and surfacing in wetlands, which is a deviation from CMP standards.

Carleton Montgomery, Executive Director of the Pinelands Preservation Alliance, discussed the choice of stone proposed for trail surfacing. He said the stone will not change the chemistry of the wetlands around the trail.

Tim Staszewski said that since the Township received the Commission's September 27, 2023 letter, it has made significant efforts to document trails and features that were permitted and those that were completed without application to the Commission, complete wetlands delineations, phase one environmental surveys and engineering plans for this project.

ED Grogan asked for confirmation that the entire parcel is preserved subject to Green Acres restrictions. Ms. Grogan noted that portions of the site were the subject of a previous MOA affecting the southern portion of the Preserve. She said the site has an extensive history with the Pinelands Commission.

Mr. Rijs said the entire park is preserved and that it has been on the municipal Recreation and Open Space Inventory.

Stacey Roth, Chief, Legal and Legislative Affairs asked for details on the planned length and width of the bridge. Mr. Staszewski said that the final length is to be determined because the bridge will reconnect a 30 foot by 8 foot section of former cranberry bog levee damaged by beaver activity. Additional study is needed to determine where the bridge footing can be installed, and that will determine the final length of the bridge.

Ms. Roth asked whether the proposed improvements would occur in phases.

Mr. Staszewski said that for the purposes of this MOA the Township is looking at all three park sections. The Township had originally focused on just the western section because it had received trail improvement grants from the NJDEP. However, after discussions with the Commission staff, they decided to include the entire site in this MOA proposal.

ED Grogan said that staff encouraged this comprehensive approach.

Ms. Roth asked for details on the anticipated offsets.

Mr. Rijs said the Township is considering restoration of the infiltration lagoons formerly used by the Municipal Utilities Authority. Rich Kerr added that the restoration would involve removal of invasive species and the plastic lagoon liners and revegetation with native species. Separately, the Evesham Township Environmental Commission is considering work in the Aerohaven area to revegetate and protect the area from future off-road vehicle damage.

Commissioner Wallner asked whether an environmental impact assessment has been completed for the approach to, and installation of, the bridge and which side of the approach to the bridge would be used for access by construction equipment. He said the trails in that section are narrow and in pristine environments.

Mr. Staszewski responded that construction access would likely come from the Tomlinson Mill side where the trails are wider and more suitable. He said the section of trail between Kettle Run and the proposed bridge is well-established, but they are proposing to resurface that section.

Commissioner Rittler Sanchez asked for clarification of any plans for the more southerly berm on the former cranberry bogs. She also asked whether the width of the trail approaching the bridge will accommodate turnaround for wheelchairs or other mobility devices.

Mr. Staszewski said there is no proposal to reconnect the more southerly berm because of existing use by wildlife.

Mr. Kane-Holland confirmed that the trails are wide enough to allow wheelchairs to turn around.

Commissioner Lohbauer asked what the total length of trails will be.

Mr. Staszewski said the total length is 4,620 linear feet.

Commissioner Lohbauer asked what the Township's timeline is for making the improvements.

Mr. Rijs said that the Township is moving forward as efficiently as possible, and that engineering and documentation of the existing trails will be completed fairly quickly.

ED Grogan reviewed the next steps in the MOA process. She said that if the P&I Committee is supportive, then this proposal would go to the full Commission, potentially in April. She said more work on stormwater management and other design details is needed and that will determine when the proposal would be ready for the full Commission. She said that the MOA public process includes holding a public hearing and takes time. She said that Ms. Roth will be working with the Township to finalize the details.

Commissioner Lohbauer made a motion to support the MOA proposal and send it to the full Commission. Commissioner Wallner seconded the motion. All voted in favor.

5. Discussion: Pinelands Conservation Fund Priorities and Acquisition Target Areas

Prior to the start of the presentation and discussion, Commissioner Avery said that he is the Chair of the Ocean County Natural Lands Trust, which may submit a project for funding through the Pinelands Conservation Fund (PCF). He recused himself from this discussion and left the meeting.

Gina Berg, Director of Land Use Programs, made a presentation (available [here](#)) on recommended changes to the criteria used to evaluate projects that are submitted to the Commission for acquisition funding through the PCF. She said that projects must be located in the acquisition target areas of either the Section 502 Fund areas or the Acquisition Target Areas identified by the Commission. She discussed prioritization of grassland habitats as directed by the source of funding from the South Jersey Transportation Authority Agreement. She reviewed other criteria including size of the project, connectivity with previously preserved lands and habitats, climate change impacts from flooding and fire hazard, and stewardship plans. She said that a new criterion was recommended this year to consider environmental justice communities with multiple environmental stressors. She said the goals of the recommended changes are to increase participation over recent years' PCF rounds, address environmental justice initiatives, continue to build successful stewardship, and to support climate mitigation goals identified by the Climate Committee by adding two expanded or new acquisition target areas. She said projects intended to preserve and maintain grassland habitats would receive additional points. She also noted that environmental justice communities and the stressors are identified by the New Jersey Department of Environmental Protection (NJDEP).

Ms. Berg discussed a suggested change to the funding award for projects that set aside funds for specific stewardship plans. The award could be increased to as much as 40% of acquisition costs for those projects with specific stewardship plans. The goal of this funding change is to potentially create a better grant proposal for a future America the Beautiful grant, but also to create incentives for acquisition and stewardship.

Ms. Berg reviewed the anticipated schedule for the PCF grants. She said staff are seeking authorization to use the recommended changes to the evaluation matrix and funding. She said staff is planning to hold the second annual Permanent Land Protection Summit in April when the new evaluation criteria, target areas, and funding structure will be rolled out. The Request for Projects would open in early May and the deadline for proposals would be in September. Project recommendations are intended to be brought to the Committee in October.

Commissioner Wallner asked if projects are limited to grassland acquisition. Ms. Berg said projects are not limited to grassland habitats, but that grassland projects will score higher using the suggested criteria.

Commissioner Rittler Sanchez asked how any potential allocation of Pinelands Development Credits (PDCs) are affected by land preservation. Ms. Berg said that the PDCs may be severed prior to preservation and that any PDCs that are not severed would be extinguished and no longer allocated to the preserved land. ED Grogan said where PDCs are severed prior to acquisition, the value of the land is reduced because the development rights are severed. She added that lands preserved through PDC severance typically are not submitted for acquisition funding through PCF because they are already preserved.

Commissioner Lettman asked if PDCs are required for development in the new acquisition target area in Pemberton Township's Regional Growth Area.

ED Grogan said that the area is residentially zoned but that PDCs are not mandatory for development in that area and noted that the assigned density is lower, and any future development is constrained by wetlands and wetlands buffers.

Commissioner Lohbauer commended the staff for objectively assessing the management area boundaries. He said incorporating the acquisition target areas helps achieve more of the Commission's goals.

Commissioner Rittler Sancez asked if the additional 7% funding is sufficient to address stewardship needs. Ms. Berg said that the additional funding is meant to be an incentive for preservation and stewardship and that it likely will not cover all costs of that stewardship plan. ED Grogan said that we are looking for other grant funding to help with stewardship.

Commissioner Lohbauer made a motion to approve the evaluation criteria, funding structure and added acquisition target areas. Commissioner Wallner seconded the motion. All voted in favor.

6. Public Comment

Carlton Montgomery, Pinelands Preservation Alliance, asked whether there is any natural grassland in the Pinelands Area. He asked if acquisition of a former soybean field that would be converted to grassland habitat would be considered for funding.

Ms. Berg said that those types of acquisition would be ideal for this evaluation matrix.

Emile DeVito of the New Jersey Conservation Foundation spoke about witnessing dump trucks hauling fill in to a site in Pemberton Township. He said the area and volume of fill was very large and included construction debris. He said trucks were coming from Essex and Union Counties. He notified the NJDEP and the Township. He said that the property representative indicated the fill was to support agricultural use of the property. He said the area had not been in agricultural use for decades. He said NJDEP staff from Solid Waste that visited the site did not have the authority to issue a stop work order. He said the Township representatives indicated that additional information had to be collected to determine whether a violation occurred. He said a notice of violation was issued on Friday but that the exact number of loads and volume of fill is unknown. He said that the Pinelands Commission needs enforcement authority to stop these types of violations.

Russell Juelg of the New Jersey Conservation Foundation and New Jersey Plant Partnership said he appealed to the Commission to update the list of threatened or endangered plant species. He encouraged the Commission to begin making science-based changes to the list and to adopt a method for incorporating future updates on a routine basis.

Jason Howell of the Pinelands Preservation Alliance said that the NJDEP Park Service has made progress on developing a road map for Wharton State Forest. He said the Commission resolution establishing a maximum baseline of roads in Wharton State Forest adopted in 2017 used USGS topographic maps as the basis for the baseline. He said it would be helpful if the Commission clarified the intent of the resolution regarding whether the roads on the topographic maps should be the only roads in Wharton.

Commissioner Lettman asked that a copy of the resolution be sent to her.

ED Grogan noted that the resolution is available on the Commission's website and staff can share a link to the resolution.

Commissioner Lohbauer said that public comments illustrate a serious problem with the Commission having to rely on other agencies to enforce the standards of the CMP. He said it would be appropriate to improve a line of communication with NJDEP to ensure action on violations such as the described dumping.

There being no other business, Commissioner Lohbauer moved to adjourn the meeting. Commissioner Lettman seconded the motion. All voted in favor. The meeting was adjourned at 11:08 a.m.

Certified as true and correct:

A handwritten signature in black ink, appearing to read "Gina A. Berg", written over a horizontal line.

Date: February 29, 2024

Gina A. Berg,
Director, Land Use Programs



Township of Evesham

"Respecting Diversity, Preserving Dignity"

Mayor Jaclyn Veasy - Councilwoman Heather Cooper - Councilwoman Ginamarie Espinoza - Councilman Eddie Freeman, III - Councilwoman Patricia Hansen

984 Tuckerton Road • Marlton • NJ 08053 • 856-983-2900 • www.evesham-nj.org

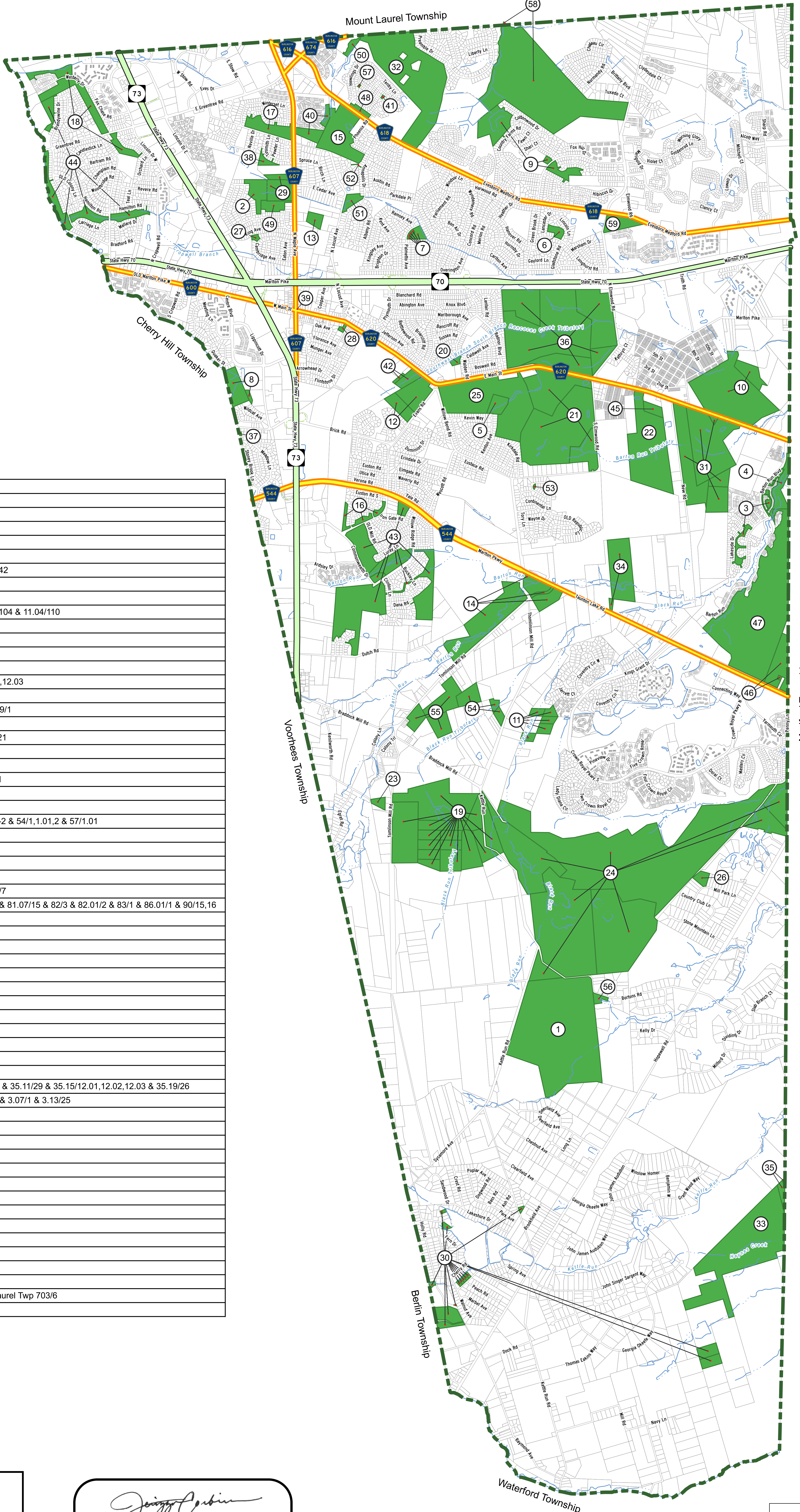
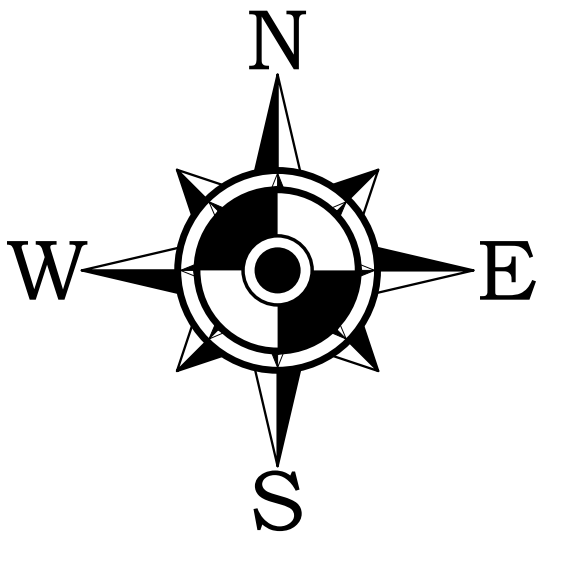


CMP Policy and Implementation Committee Meeting 9:30 a.m Friday, February 23, 2024

1. Township of Evesham request for a potential Memorandum of Agreement (MOA) with the Pinelands Commission for the Municipal Park known as the Black Run Preserve (BRP).

2. BRP Municipal Park:
 - a. 700+ acre Municipal Park located in the southern section of the Township. As the entire park is listed on the municipal Recreation Open Space Inventory (ROSI) it is also subject to NJDEP Green Acres requirements in addition to Pinelands Commission regulations.

General Notes & Data Sources:
 This Geographic Information System (GIS) Recreation and Open Space Inventory (ROSI) Map is for demonstration purposes only. Any use of this product with respect to accuracy and precision shall be the sole responsibility of the end user.
 The areas shown on this ROSI map are referenced, in part, from ground surveys, aerial surveys and recorded plans, and documents, and are to be used for approximate location purposes only.
 Water bodies: NJDEP NHD Dataset, 2002.
 NJDOT Roads: NJGN, 2017.
 Additional cadastral GIS mapping data, such as, waterways, roadways, etc. was obtained from the New Jersey Geographic Information Network (NJGIN), the New Jersey Department of Transportation (NJDOT), the New Jersey Department of Environmental Protection (NJDEP), the New Jersey Office of Information Technology (NJGIT), and the New Jersey Office of GIS (NJOGIS). The data was obtained and provided by the various New Jersey Departments at the New Jersey Geographic Information Network (NJGIN) <https://njgis-newjersey.opendata.arcgis.com>. This secondary product has not been verified by (NJGIN/NJGIT/NJOGIS/NJDOT/NJDEP) and is not state-authorized.
 All positions are based on the following:
 • NAD 83 (horizontal datum)
 • New Jersey State Plane Coordinate System
 • English units (feet)
 The geodetic accuracy and precision of the Geographic Information System (GIS) data contained in this mapping has not been developed nor verified by a professional licensed land surveyor and shall not be nor is intended to be used in matters requiring delineation and location of true ground horizontal and/or vertical controls.

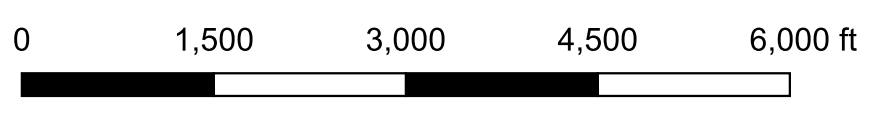


Map Key	Park Name	Block/Lot
1	Aerohaven	57/1
2	Baker Tract	20.15/6
3	Barton Run	44.17/1 & 44.19/57
4	Barton Run Lake	44.23/2.04
6	Heathrow Park	13.23/33
7	Cambridge Park	13.06/22,23,24,25,42
5	Brush Hollow	29/2
8	Carrefour	24.24/2.02,101
9	Country Farms	11.01/174 & 11.02/104 & 11.04/110
10	Croft Farm	31/8.07,9
11	Density Transfer	41/19,20,21,23,26
12	Downs Tract	26/10-11
13	Eisenhower Park	10/3.06
14	Evans Tract	40/2 & 41/12,12.01,12.03
15	Evesboro Downs	9/9.02
16	Glen Eayre	33.07/28,29 & 33.09/1
17	Greenlane Farms	7.04/41
18	Greentree Village	1.08/34,76 & 3.30/21
19	Hamilton Georgetown Road	47/2 & 48/4-16
20	Heritage	28.16/10
21	Indian Springs	29/3,3.01 & 29.12/1
22	Johnston Tract	30/2
23	Kenilworth	49/5
24	Kings Grant II	47/1 & 52/1 & 53/1-2 & 54/1,1.01,2 & 57/1.01
25	Koppenhaver Tract	29/1
26	Little Mill	54.04/22
27	London Square Park	20.11/25
28	Kain Memorial Park	4.11/5
29	Marlgreen Tract	6.17/11.01 & 20.15/7
30	Marlon Lakes	81.04/18-22,56,60 & 81.07/15 & 82/3 & 82.01/2 & 83/1 & 86.01/1 & 90/15,16
31	Memorial Park	44/5-8,11.01
32	Musulini	11/1
33	Pachoango	90/11
34	Project Heal Camp	38/6,16.01
35	Rancocas Watershed	90/9,9.01
36	Savich Tract	28.20/6-10
37	Tara	34.07/7
38	The Maples	6.15/1
39	Town Clock	4.05/17.05
40	Vineyards	9.01/124,190
41	Westbury Chase Park	8.06/18
42	Wiley Tract	26/8-9
43	Willow Ridge	35.03/4 & 35.09/31 & 35.11/29 & 35.15/12.01,12.02,12.03 & 35.19/26
44	Woodstream	1.01/2 & 3.01/1,44 & 3.07/1 & 3.13/25
45	Morrison Parcel	30/2.04
46	Barton Road	44.31/2-3
47	Vacant Land	44.26/110
48	Open Space	8.07/26
49	Open Space	20.07/1
50	Church Rd Farm	8.18/5
51	Park	13.64/13
52	Open Space	13.64/53
53	Vacant Land	38.02/1
54	Density Transfer	42/16,18,23
55	Density Transfer	46/1,3,4
56	Open Space	57/3.04
57	Tot Lot	8.02/30
58	Park (Formerly Beagle Club)	11.52/2 & Mount Laurel Twp 703/6
59	Open Space	18/3



Recreational and Open Space
Evesham Township
 Burlington County New Jersey
 September 17th, 2021 Scale 1:1500
REMINGTON & VERNICK ENGINEERS
 2059 SPRINGDALE ROAD, CHERRY HILL, NJ 08003
 (856) 795-9595, FAX (856) 795-1882, RVE.COM
 Certificate of Authorization: 24 0A 2800390
 Excellence • Innovation • Service

Jenizza Corbin
 DATE: 12/15/2022
JENIZZA CORBIN, PP
 NJ PROFESSIONAL PLANNER NO. 33L100681200



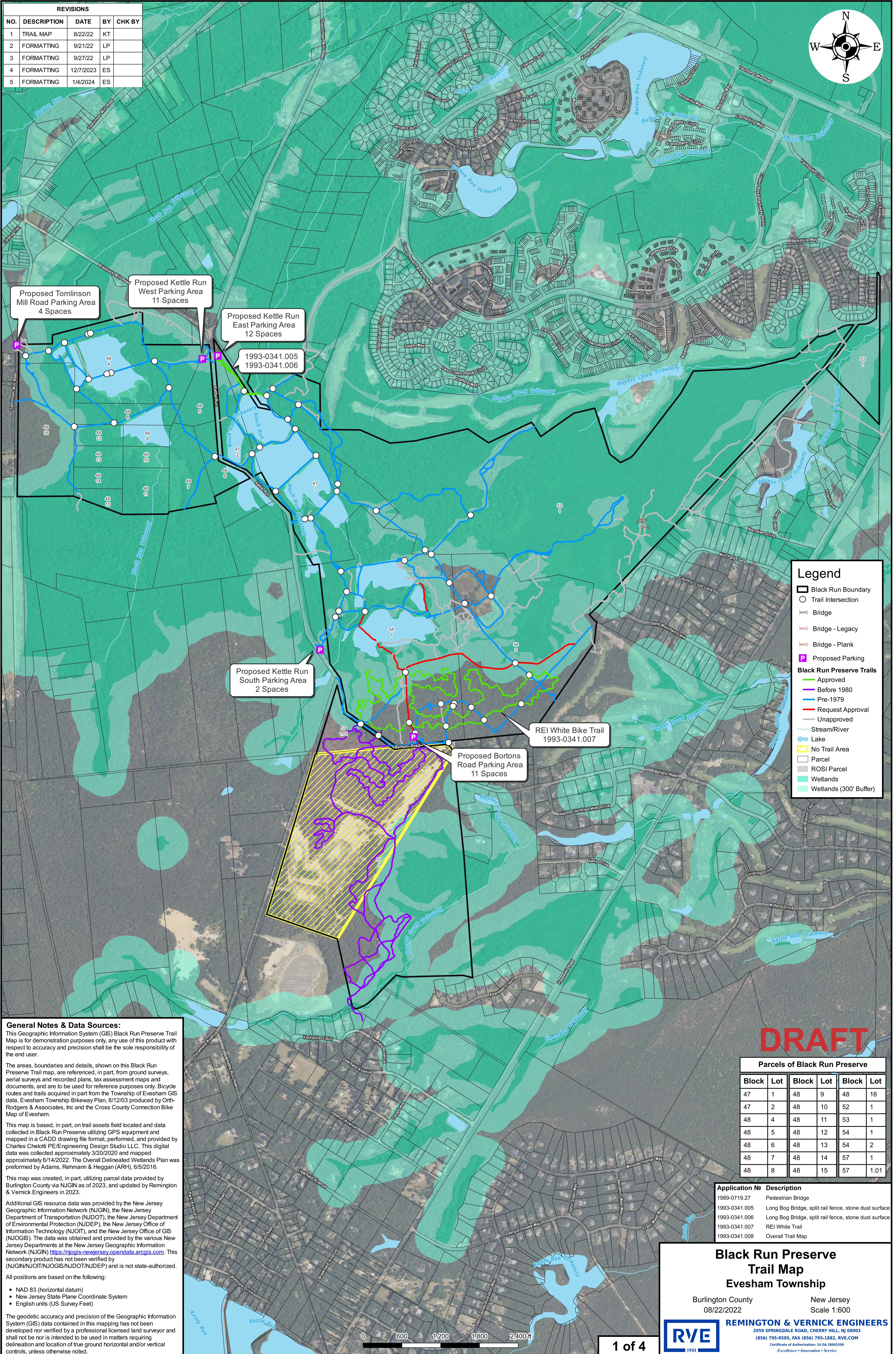
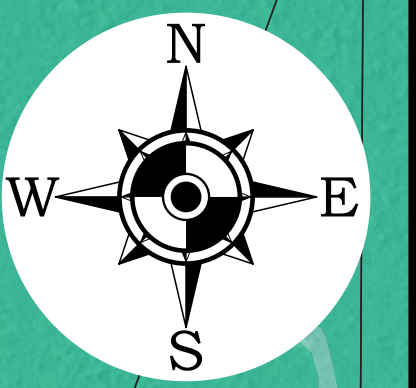
Legend

- Open Space/Park
- Parcel
- Stream
- Waterbody
- Municipal Boundary
- State Highway
- County Road
- Ramp

REVISIONS

NO.	DESCRIPTION	DATE	BY	CHK
1	Added Former Beagle Club & 387 Evesboro-Medford Road	Dec 7 th , 2022	ES	KZ
2				
3				
4				

REVISIONS				
NO.	DESCRIPTION	DATE	BY	CHK BY
1	TRAIL MAP	8/22/22	KT	
2	FORMATTING	9/21/22	LP	
3	FORMATTING	9/27/22	LP	
4	FORMATTING	12/7/2023	ES	
5	FORMATTING	1/4/2024	ES	



Proposed Tomlinson Mill Road Parking Area
4 Spaces

Proposed Kettle Run West Parking Area
11 Spaces

Proposed Kettle Run East Parking Area
12 Spaces

1993-0341.005
1993-0341.006

Proposed Kettle Run South Parking Area
2 Spaces

Proposed Bortons Road Parking Area
11 Spaces

REI White Bike Trail
1993-0341.007

Legend

- Black Run Boundary
- Trail Intersection
- Bridge
- Bridge - Legacy
- Bridge - Plank
- Proposed Parking
- Black Run Preserve Trails
- Approved
- Before 1980
- Pre-1979
- Request Approval
- Unapproved
- Stream/River
- Lake
- No Trail Area
- Parcel
- ROSI Parcel
- Wetlands
- Wetlands (300' Buffer)

General Notes & Data Sources:
This Geographic Information System (GIS) Black Run Preserve Trail Map is for demonstration purposes only, any use of this product with respect to accuracy and precision shall be the sole responsibility of the end user.

The areas, boundaries and details, shown on this Black Run Preserve Trail map, are referenced, in part, from ground surveys, aerial surveys and recorded plans, tax assessment maps and documents, and are to be used for reference purposes only. Bicycle routes and trails acquired in part from the Township of Evesham GIS data, Evesham Township Bikeway Plan, 8/12/03 produced by Orth-Rodgers & Associates, Inc and the Cross County Connection Bike Map of Evesham.

This map is based, in part, on trail assets field located and data collected in Black Run Preserve utilizing GPS equipment and mapped in a CADD drawing file format, performed, and provided by Charles Chelotti PE/Engineering Design Studio LLC. This digital data was collected approximately 3/20/2020 and mapped approximately 6/14/2022. The Overall Delineated Wetlands Plan was performed by Adams, Rehmann & Heggan (ARH), 6/5/2016.

This map was created, in part, utilizing parcel data provided by Burlington County via NJGN as of 2023, and updated by Remington & Vernick Engineers in 2023.

Additional GIS resource data was provided by the New Jersey Geographic Information Network (NJGIN), the New Jersey Department of Transportation (NJDOT), the New Jersey Department of Environmental Protection (NJDEP), the New Jersey Office of Information Technology (NJGIT), and the New Jersey Office of GIS (NJOGIS). The data was obtained and provided by the various New Jersey Departments at the New Jersey Geographic Information Network (NJGIN) <https://njgis-newjersey.opendata.arcgis.com>. This secondary product has not been verified by (NJGIN/NJOT/NJOGIS/NJDOT/NJDEP) and is not state-authorized.

All positions are based on the following:

- NAD 83 (horizontal datum)
- New Jersey State Plane Coordinate System
- English units (US Survey Feet)

The geodetic accuracy and precision of the Geographic Information System (GIS) data contained in this mapping has not been developed nor verified by a professional licensed land surveyor and shall not be nor is intended to be used in matters requiring delineation and location of true ground horizontal and/or vertical controls, unless otherwise noted.

DRAFT

Parcels of Black Run Preserve

Block	Lot	Block	Lot	Block	Lot
47	1	48	9	48	16
47	2	48	10	52	1
48	4	48	11	53	1
48	5	48	12	54	1
48	6	48	13	54	2
48	7	48	14	57	1
48	8	48	15	57	1.01

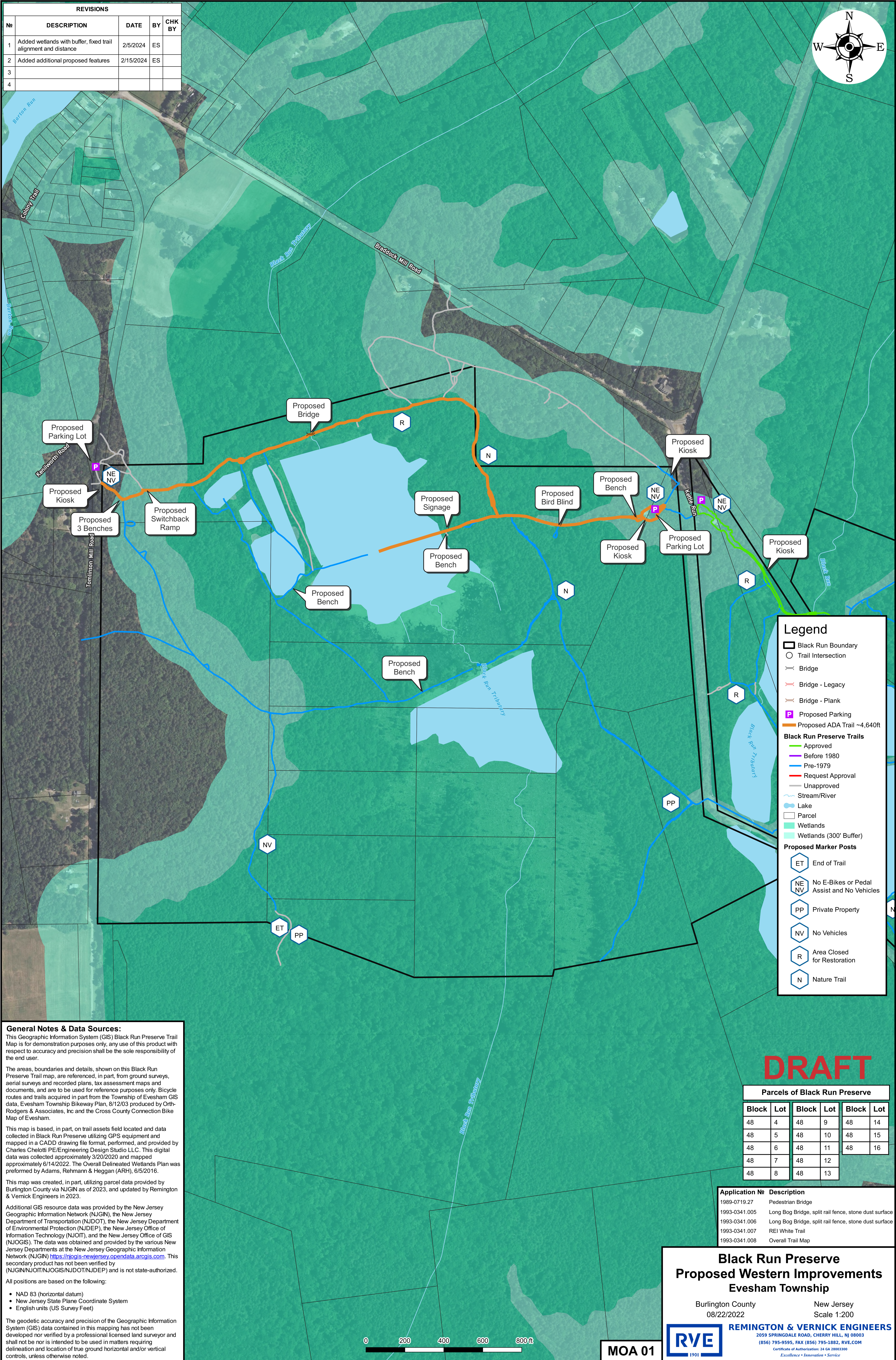
Application No	Description
1989-0719.27	Pedestrian Bridge
1993-0341.005	Long Bog Bridge, split rail fence, stone dust surface
1993-0341.006	Long Bog Bridge, split rail fence, stone dust surface
1993-0341.007	REI White Trail
1993-0341.008	Overall Trail Map

Black Run Preserve Trail Map
Evesham Township

Burlington County New Jersey
08/22/2022 Scale 1:600

REMINGTON & VERNICK ENGINEERS
2059 SPRINGDALE ROAD, CHERRY HILL, NJ 08003
(856) 795-9595, FAX (856) 795-1882, RVE.COM
Certificate of Authorization: 24 GA 28003300
Excellence • Innovation • Service

REVISIONS				
No	DESCRIPTION	DATE	BY	CHK BY
1	Added wetlands with buffer, fixed trail alignment and distance	2/5/2024	ES	
2	Added additional proposed features	2/15/2024	ES	
3				
4				



Legend

- Black Run Boundary
- Trail Intersection
- Bridge
- Bridge - Legacy
- Bridge - Plank
- Proposed Parking
- Proposed ADA Trail ~4,640ft
- Black Run Preserve Trails**
 - Approved
 - Before 1980
 - Pre-1979
 - Request Approval
 - Unapproved
- Stream/River
- Lake
- Parcel
- Wetlands
- Wetlands (300' Buffer)
- Proposed Marker Posts**
 - ET End of Trail
 - NE NV No E-Bikes or Pedal Assist and No Vehicles
 - PP Private Property
 - NV No Vehicles
 - R Area Closed for Restoration
 - N Nature Trail

General Notes & Data Sources:
 This Geographic Information System (GIS) Black Run Preserve Trail Map is for demonstration purposes only, any use of this product with respect to accuracy and precision shall be the sole responsibility of the end user.

The areas, boundaries and details, shown on this Black Run Preserve Trail map, are referenced, in part, from ground surveys, aerial surveys and recorded plans, tax assessment maps and documents, and are to be used for reference purposes only. Bicycle routes and trails acquired in part from the Township of Evesham GIS data, Evesham Township Bikeway Plan, 8/12/03 produced by Orth-Rodgers & Associates, Inc and the Cross County Connection Bike Map of Evesham.

This map is based, in part, on trail assets field located and data collected in Black Run Preserve utilizing GPS equipment and mapped in a CADD drawing file format, performed, and provided by Charles Chelotti PE/Engineering Design Studio LLC. This digital data was collected approximately 3/20/2020 and mapped approximately 6/14/2022. The Overall Delineated Wetlands Plan was performed by Adams, Rehmann & Heggan (ARH), 6/5/2016.

This map was created, in part, utilizing parcel data provided by Burlington County via NJGN as of 2023, and updated by Remington & Verrick Engineers in 2023.

Additional GIS resource data was provided by the New Jersey Geographic Information Network (NJGN), the New Jersey Department of Transportation (NJDOT), the New Jersey Department of Environmental Protection (NJDEP), the New Jersey Office of Information Technology (NJOT), and the New Jersey Office of GIS (NJOGIS). The data was obtained and provided by the various New Jersey Departments at the New Jersey Geographic Information Network (NJGN) <https://njgis-newjersey.opendata.arcgis.com>. This secondary product has not been verified by (NJGIN/NJOT/NJOGIS/NJDOT/NJDEP) and is not state-authorized.

All positions are based on the following:

- NAD 83 (horizontal datum)
- New Jersey State Plane Coordinate System
- English units (US Survey Feet)

The geodetic accuracy and precision of the Geographic Information System (GIS) data contained in this mapping has not been developed nor verified by a professional licensed land surveyor and shall not be nor is intended to be used in matters requiring delineation and location of true ground horizontal and/or vertical controls, unless otherwise noted.

DRAFT

Parcels of Black Run Preserve					
Block	Lot	Block	Lot	Block	Lot
48	4	48	9	48	14
48	5	48	10	48	15
48	6	48	11	48	16
48	7	48	12		
48	8	48	13		

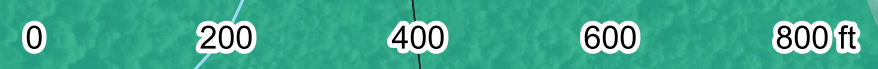
Application No	Description
1989-0719.27	Pedestrian Bridge
1993-0341.005	Long Bog Bridge, split rail fence, stone dust surface
1993-0341.006	Long Bog Bridge, split rail fence, stone dust surface
1993-0341.007	REI White Trail
1993-0341.008	Overall Trail Map

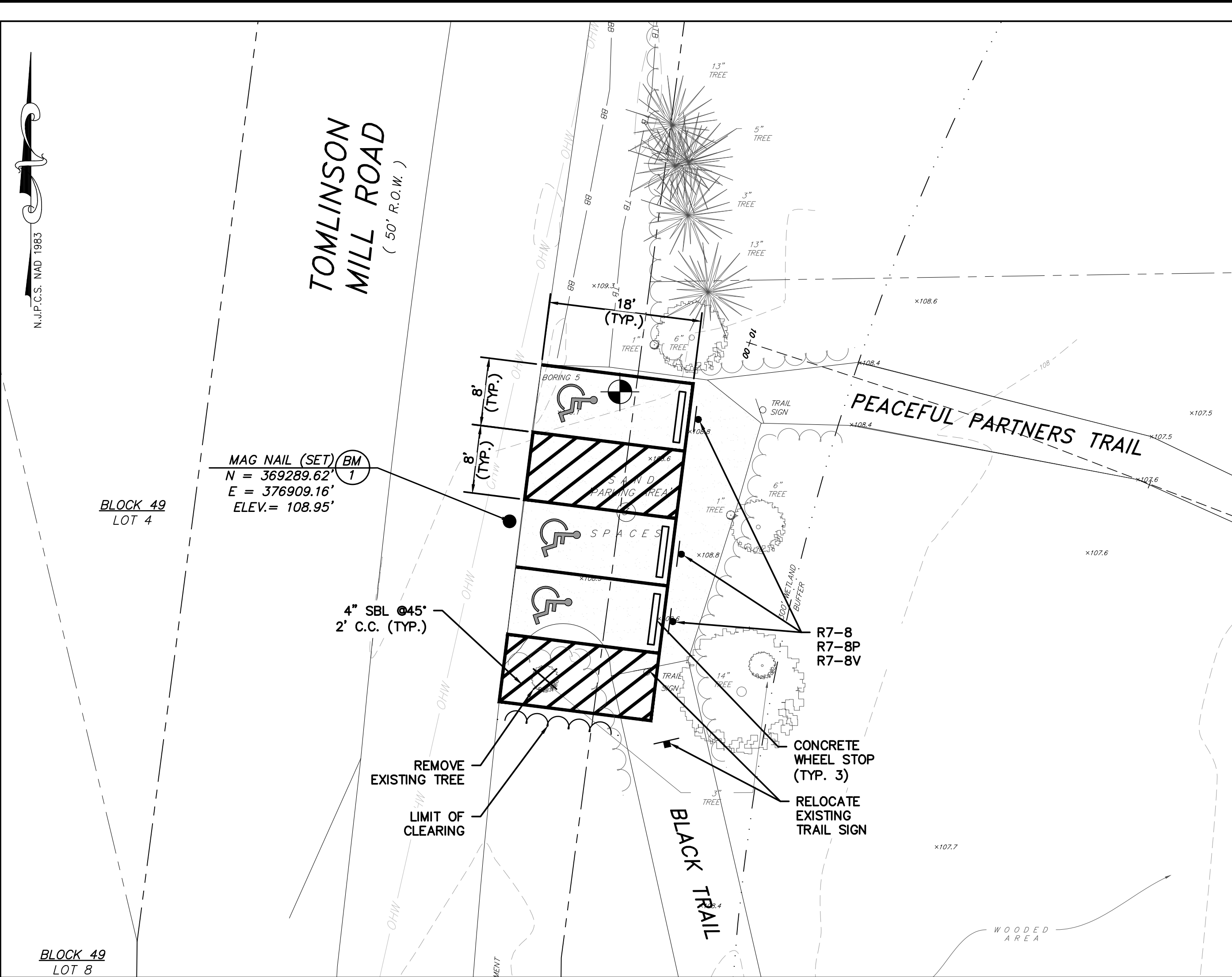
**Black Run Preserve
Proposed Western Improvements
Evesham Township**

Burlington County New Jersey
08/22/2022 Scale 1:200

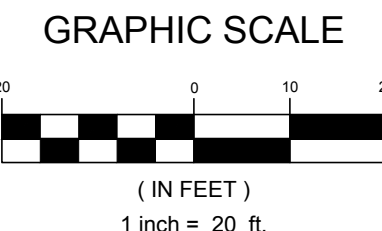
REMINGTON & VERRICK ENGINEERS
 2059 SPRINGDALE ROAD, CHERRY HILL, NJ 08003
 (856) 795-9595, FAX (856) 795-1882, RVE.COM
 Certificate of Authorization: 24 GA 28003300
 Excellence • Innovation • Service

MOA 01



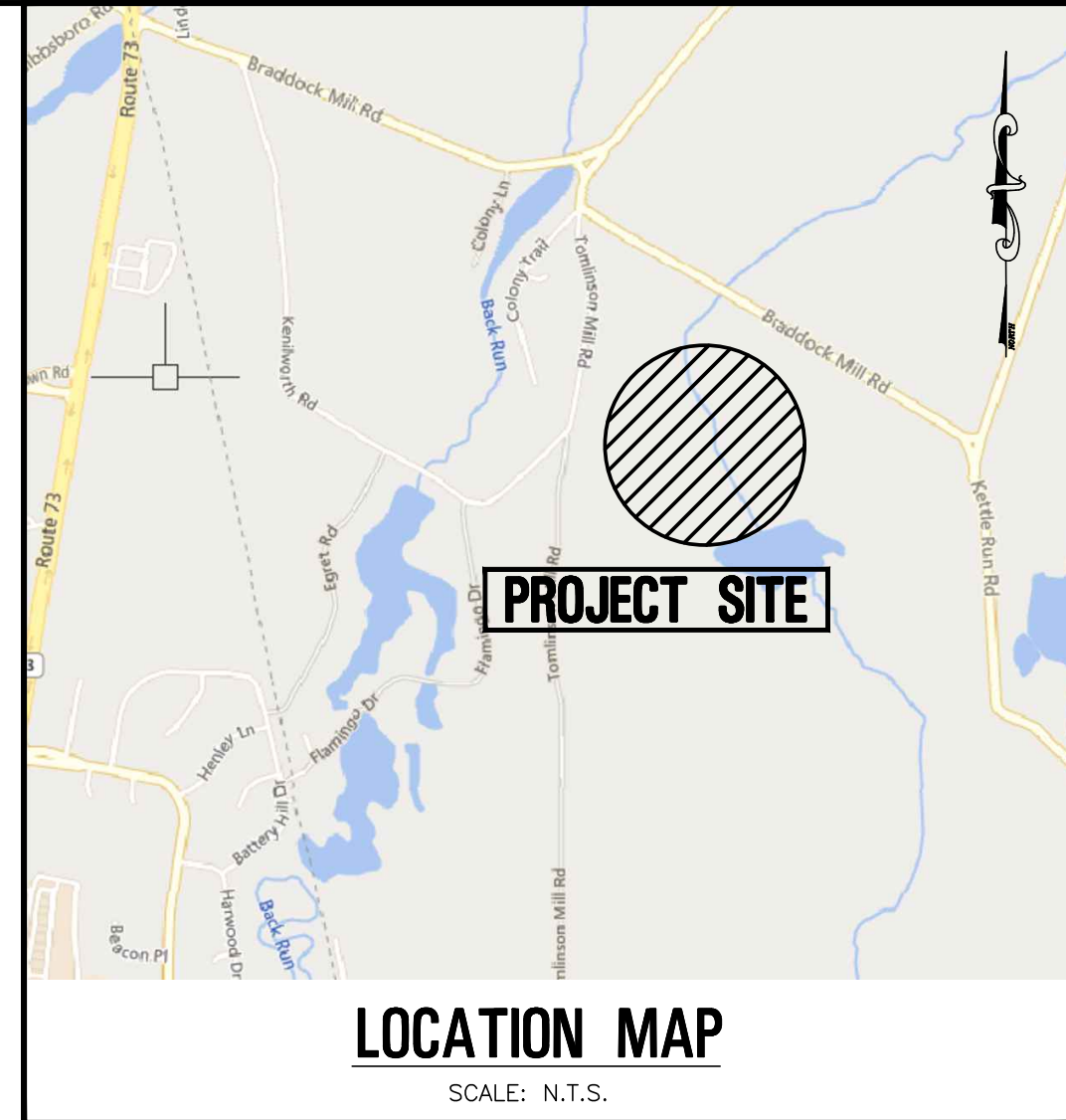


PLAN
SCALE: 1"=10'



GENERAL NOTES

- CONTRACTOR SHALL VERIFY ALL DIMENSIONS AND EXISTING CONDITIONS IN THE FIELD PRIOR TO THE START OF THE CONSTRUCTION, ANY ERRORS OR DISCREPANCIES SHALL BE BROUGHT TO THE ATTENTION OF THE ENGINEER IMMEDIATELY.
- LOCATION OF EXISTING UTILITIES ARE APPROXIMATE AND MUST BE VERIFIED IN THE FIELD PRIOR TO THE START OF CONSTRUCTION.
- THE CONTRACTOR SHALL USE EXCAVATED MATERIALS FOR BACKFILL UNLESS OTHERWISE DIRECTED BY THE ENGINEER.
- ALL PAVED AND CONCRETE AREAS DISTRIBUTED DURING CONSTRUCTION SHALL BE RESTORED TO EXISTING CONDITION AT LEAST EQUAL TO THAT WHICH EXISTED PRIOR TO THE START OF CONSTRUCTION.
- ALL GRASSED OR WOODED AREAS DISTRIBUTED DURING CONSTRUCTION SHALL BE TOPSOILED AND SEEDED.
- ALL FILL SHALL BE PLACED IN 12" LAYERS AND THOROUGHLY COMPACTED TO THE SATISFACTION OF THE ENGINEER. IF BORROW FILL IS REQUIRED, IT SHALL BE SUBJECT TO THE APPROVAL OF THE ENGINEER.
- THE CONTRACTOR SHALL BE RESPONSIBLE FOR THE LOCATION AND PRESERVATION OF THE UNDERGROUND AND SURFACE UTILITIES AND STRUCTURES AT OR ADJACENT TO THE SITE OF CONSTRUCTION AND IT SHALL BE AT HIS OWN EXPENSE TO REPAIR OR REPLACE ANYTHING THAT HE DAMAGES.
- ALL CONSTRUCTION DETAILS NOT SHOWN SHALL BE IN ACCORDANCE WITH N.J.D.O.T. STANDARDS AS DETAILED IN:
 - "STANDARD ROADWAY CONSTRUCTION/TRAFFIC CONTROL/BRIDGE CONSTRUCTION DETAILS, 2016."
 - "ELECTRICAL BUREAU STANDARD DETAILS: 2007,"
 INCLUDING ALL APPLICABLE BASELINE DOCUMENT CHANGES AND APPENDICES. THESE DETAILS MAY BE PURCHASED THROUGH THE N.J.D.O.T. PLANS AND SPECIFICATION CENTER AT:
1035 PARKWAY AVENUE,
TRENTON, NEW JERSEY
08625-0600
(TELEPHONE: 1-609-530-2098)
- SEPARATE PAYMENT WILL NOT BE MADE FOR SAW CUTTING OF ANY KIND, BUT THE COST SHALL BE INCLUDED IN THE VARIOUS ITEMS OF THE PROPOSAL.
- PAYMENT FOR JOINT MATERIAL FOR ALL CONCRETE WORK WILL NOT BE MEASURED BUT SHALL BE INCLUDED IN THE VARIOUS ITEMS OF THE PROPOSAL.
- TRAFFIC CONTROL SHALL BE IN ACCORDANCE WITH THE LATEST DETAILS TCD-1 THROUGH TCD-5.
- THE CONTRACTOR SHALL BE RESPONSIBLE FOR ALL UTILITY MARK OUTS AND COMPLIANCE WITH ALL FEDERAL, STATE AND LOCAL CODES AND REGULATIONS.
- THE CONTRACTOR IS RESPONSIBLE FOR OBTAINING ALL NECESSARY PERMITS FOR CONSTRUCTION FROM THE APPROPRIATE GOVERNMENT AGENCIES, WHERE APPLICABLE.
- THE CONTRACTOR SHALL ADJUST THE POSITION OF ANY AND ALL PROPOSED STRUCTURES AND PLANTINGS TO ACCOMMODATE EXISTING UTILITIES AND BUILDING FEATURES. THE LANDSCAPE ARCHITECT SHALL BE CONTACTED WITH ANY QUESTIONS AND/OR CONCERNS.
- THE CONTRACTOR SHALL COORDINATE BENCH TYPE, PURCHASE AND INSTALLATION WITH OWNER.
- THE CONTRACTOR IS RESPONSIBLE FOR THE REMOVAL OF ALL DEBRIS AND EXCESS MATERIALS FROM THE JOB SITE.



RVE
1901

REMINGTON & VERNICK ENGINEERS
2059 SPRINGDALE ROAD
CHERRY HILL, NJ 08003
(856) 795-9595, FAX (856) 795-1882
WEB ADDRESS : RVE.COM
Certification of Authorization: 24 GA 28003300
Excellence • Innovation • Service

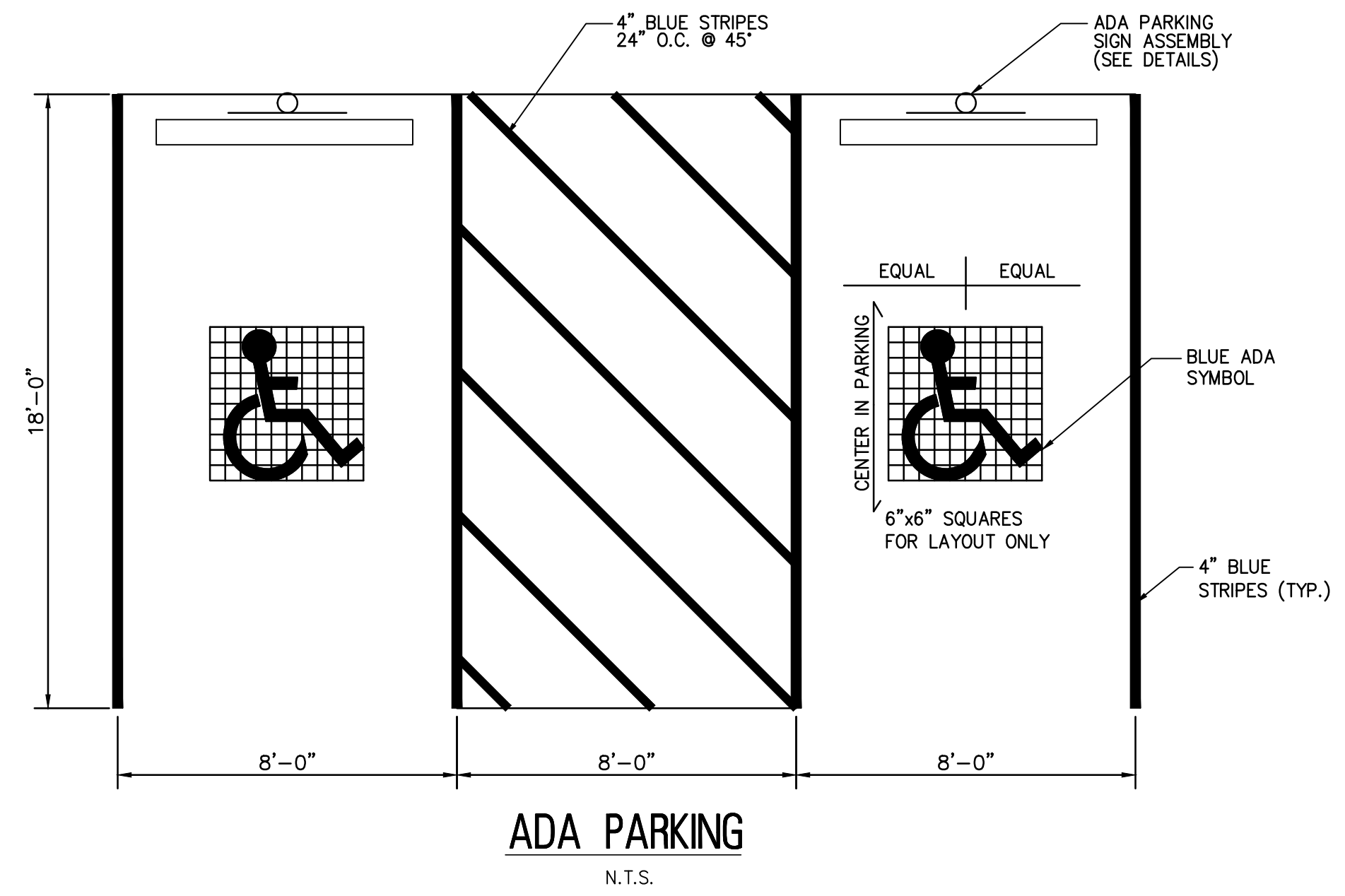
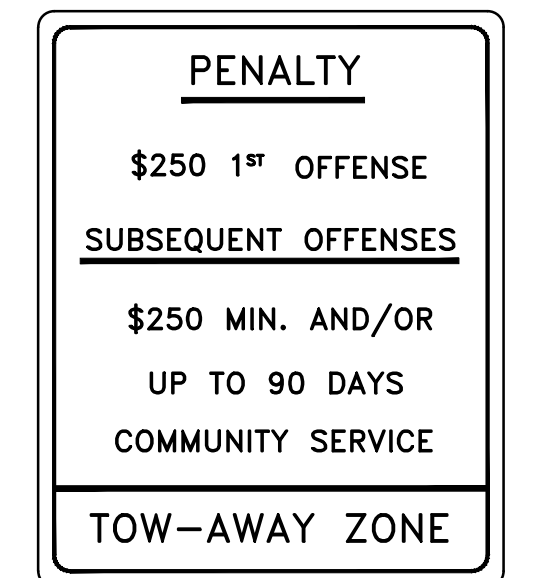
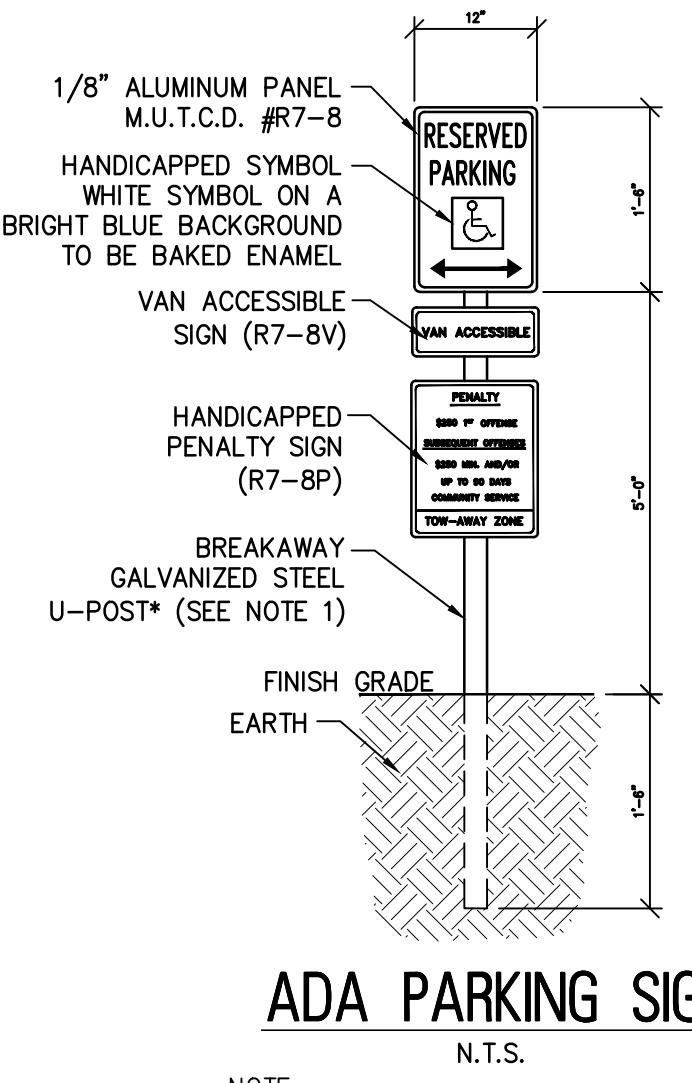
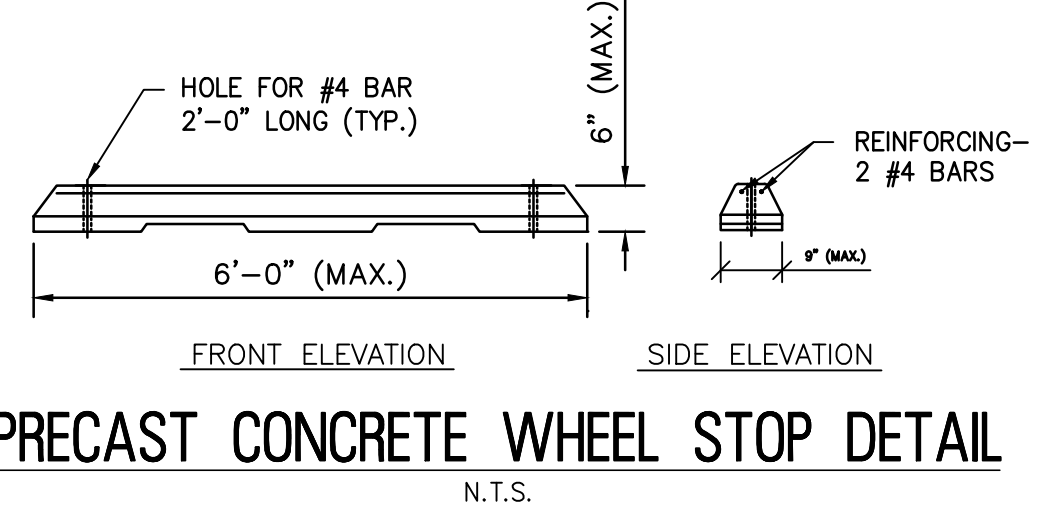
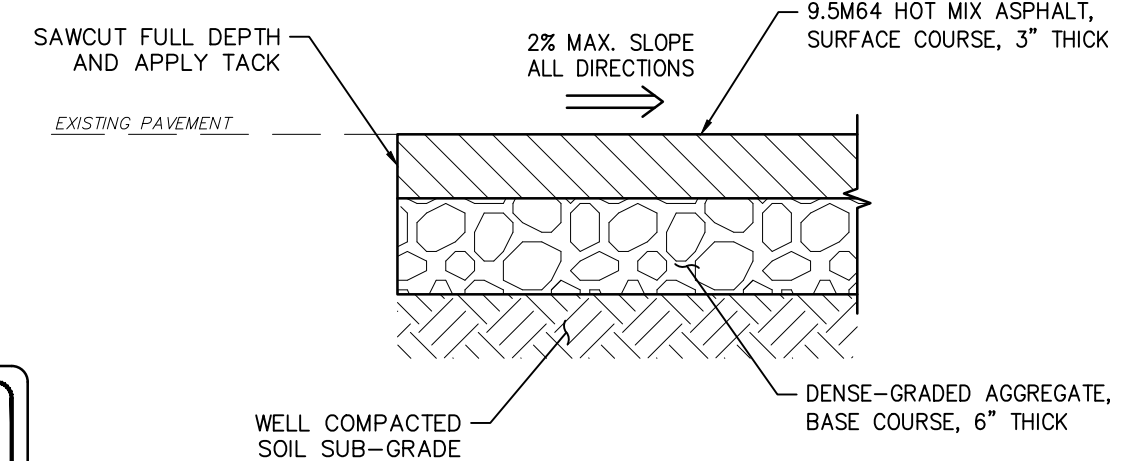
DATE: _____
TIMOTHY R. STASZEWSKI
NJ PROFESSIONAL ENGINEER LIC. NO. 47542

PLANS WHICH DO NOT BEAR AN EMBOSSED SEAL ARE NOT VALID.

ALL DOCUMENTS PREPARED BY REMINGTON & VERNICK ENGINEERS AND AFFILIATES ARE INSTRUMENTS OF SERVICE IN RESPECT OF THE PROJECT. THEY ARE NOT INTENDED OR REPRESENTED TO BE SUITABLE FOR REUSE BY OWNER OR OTHERS ON EXTENSIONS OF THE PROJECT OR ON ANY OTHER PROJECT. ANY REUSE WITHOUT WRITTEN VERIFICATION OR ADAPTATION BY REMINGTON & VERNICK ENGINEERS AND AFFILIATES FOR THE SPECIFIC PURPOSE INTENDED WILL BE AT OWNERS SOLE RISK AND WITHOUT LIABILITY OR LEGAL EXPOSURE TO REMINGTON & VERNICK ENGINEERS AND AFFILIATES, AND OWNER SHALL INDEMNIFY AND HOLD HARMLESS REMINGTON & VERNICK ENGINEERS AND AFFILIATES FROM ALL CLAIMS, DAMAGES, LOSSES AND EXPENSES ARISING OUT OF OR RESULTING THEREFROM.

SURVEY NOTES & REFERENCES:

- THE HORIZONTAL DATUM IS BASED ON THE NEW JERSEY STATE PLANE COORDINATE SYSTEM (NAD-1983) AND THE VERTICAL DATUM IS BASED ON NAVD-1988 - 2012A ADJ. (ADD 1.17 FEET TO THESE ELEVATIONS TO CONVERT TO NGVD-1929 DATUM)
- PROPERTY AND RIGHT-OF-WAY LINES SHOWN ON THESE PLANS ARE APPROXIMATE LOCATIONS BASED ON THE CURRENT TAX MAPS OF THE TOWNSHIP OF CHERRY HILL, CAMDEN COUNTY, NEW JERSEY. PROPERTY AND RIGHT-OF-WAY LINES ARE SHOWN FOR GRAPHICAL INFORMATION ONLY AND HAVE NOT BEEN FIELD VERIFIED.
- EXISTING TOPOGRAPHIC CONDITIONS WERE SURVEYED BY REMINGTON & VERNICK ENGINEERS UNDER THE SUPERVISION OF CHARLES E. ADAMSON, N.J.P.L.S. LICENSE NO. 42627. THE SURVEY WORK WAS COMPLETED ON AUGUST 24 & SEPTEMBER 12, 2023. ADDITIONAL TOPOGRAPHIC SURVEY COMPLETED JANUARY 11, 2024.
- WETLAND DELINEATION & LOCATION PERFORMED BY REMINGTON & VERNICK ENGINEERS ON AUGUST 15, 2023.
- THIS PLAN AND SURVEY DOES NOT CERTIFY TO THE LOCATION, BOTH HORIZONTAL AND VERTICAL, OF ANY UNDERGROUND UTILITY OR STRUCTURE THAT WAS NOT EXPOSED FOR DIRECT MEASUREMENT.



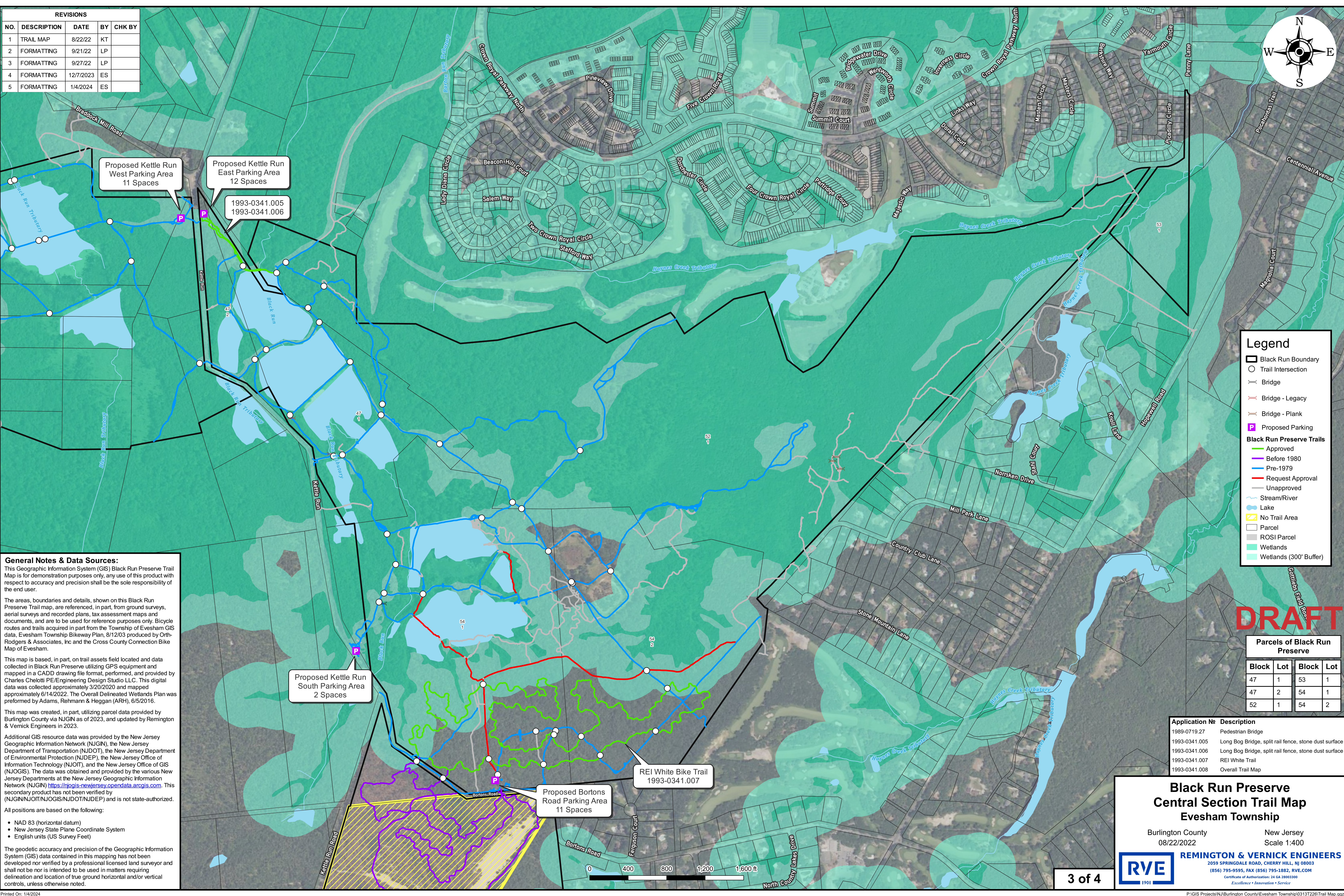
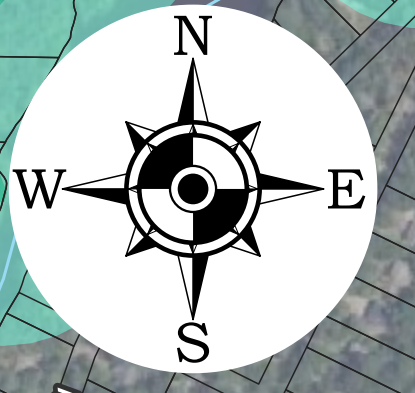
NO.	REVISION	DATE	BY	CHK

CONSTRUCTION PLAN

BLACK RUN RESERVE
TOMLINSON MILL ROAD TRAIL IMPROVEMENTS
EVESHAM BOROUGH BURLINGTON COUNTY NEW JERSEY

DATE	DESIGN BY	CHECKED BY	SCALE
01/2024	T.R.S.	T.R.S.	AS NOTED
JOB No.:	0313246		
1 of 1			

REVISIONS				
NO.	DESCRIPTION	DATE	BY	CHK BY
1	TRAIL MAP	8/22/22	KT	
2	FORMATTING	9/21/22	LP	
3	FORMATTING	9/27/22	LP	
4	FORMATTING	12/7/2023	ES	
5	FORMATTING	1/4/2024	ES	



Proposed Kettle Run West Parking Area
11 Spaces

Proposed Kettle Run East Parking Area
12 Spaces

1993-0341.005
1993-0341.006

Proposed Kettle Run South Parking Area
2 Spaces

Proposed Bortons Road Parking Area
11 Spaces

REI White Bike Trail
1993-0341.007

Legend	
[Black Outline]	Black Run Boundary
[Circle]	Trail Intersection
[Line with Ticks]	Bridge
[Line with Ticks]	Bridge - Legacy
[Line with Ticks]	Bridge - Plank
[Square]	Proposed Parking
Black Run Preserve Trails	
[Green Line]	Approved
[Purple Line]	Before 1980
[Blue Line]	Pre-1979
[Red Line]	Request Approval
[Grey Line]	Unapproved
[Blue Line]	Stream/River
[Blue Area]	Lake
[Yellow Area]	No Trail Area
[Grey Area]	Parcel
[Light Green Area]	ROSI Parcel
[Dark Green Area]	Wetlands
[Lightest Green Area]	Wetlands (300' Buffer)

General Notes & Data Sources:
This Geographic Information System (GIS) Black Run Preserve Trail Map is for demonstration purposes only, any use of this product with respect to accuracy and precision shall be the sole responsibility of the end user.

The areas, boundaries and details, shown on this Black Run Preserve Trail map, are referenced, in part, from ground surveys, aerial surveys and recorded plans, tax assessment maps and documents, and are to be used for reference purposes only. Bicycle routes and trails acquired in part from the Township of Evesham GIS data, Evesham Township Bikeway Plan, 8/12/03 produced by Orth-Rodgers & Associates, Inc and the Cross County Connection Bike Map of Evesham.

This map is based, in part, on trail assets field located and data collected in Black Run Preserve utilizing GPS equipment and mapped in a CADD drawing file format, performed, and provided by Charles Chelotti PE/Engineering Design Studio LLC. This digital data was collected approximately 3/20/2020 and mapped approximately 6/14/2022. The Overall Delineated Wetlands Plan was performed by Adams, Rehm and Heggan (ARH), 6/5/2016.

This map was created, in part, utilizing parcel data provided by Burlington County via NJGIN as of 2023, and updated by Remington & Vernick Engineers in 2023.

Additional GIS resource data was provided by the New Jersey Geographic Information Network (NJGIN), the New Jersey Department of Transportation (NJDOT), the New Jersey Department of Environmental Protection (NJDEP), the New Jersey Office of Information Technology (NJGIT), and the New Jersey Office of GIS (NJOGIS). The data was obtained and provided by the various New Jersey Departments at the New Jersey Geographic Information Network (NJGIN) <https://njgis-newjersey.opendata.arcgis.com>. This secondary product has not been verified by (NJGIN/NJGIT/NJOGIS/NJDOT/NJDEP) and is not state-authorized.

All positions are based on the following:

- NAD 83 (horizontal datum)
- New Jersey State Plane Coordinate System
- English units (US Survey Feet)

The geodetic accuracy and precision of the Geographic Information System (GIS) data contained in this mapping has not been developed nor verified by a professional licensed land surveyor and shall not be nor is intended to be used in matters requiring delineation and location of true ground horizontal and/or vertical controls, unless otherwise noted.

DRAFT

Parcels of Black Run Preserve			
Block	Lot	Block	Lot
47	1	53	1
47	2	54	1
52	1	54	2

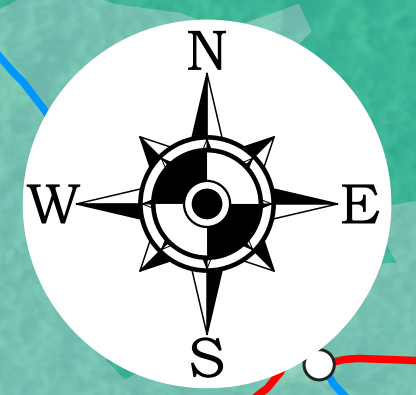
Application #	Description
1989-0719.27	Pedestrian Bridge
1993-0341.005	Long Bog Bridge, split rail fence, stone dust surface
1993-0341.006	Long Bog Bridge, split rail fence, stone dust surface
1993-0341.007	REI White Trail
1993-0341.008	Overall Trail Map

**Black Run Preserve
Central Section Trail Map
Evesham Township**

Burlington County New Jersey
08/22/2022 Scale 1:400



REVISIONS				
NO.	DESCRIPTION	DATE	BY	CHK BY
1	TRAIL MAP	8/22/22	KT	
2	FORMATTING	9/21/22	LP	
3	FORMATTING	9/27/22	LP	
4	FORMATTING	12/7/2023	ES	
5	FORMATTING	1/4/2024	ES	



Proposed Kettle Run South Parking Area
2 Spaces

Proposed Bortons Road Parking Area
11 Spaces

REI White Bike Trail
1993-0341.007

Legend	
	Black Run Boundary
	Trail Intersection
	Bridge
	Bridge - Legacy
	Bridge - Plank
	Proposed Parking
Black Run Preserve Trails	
	Approved
	Before 1980
	Pre-1979
	Request Approval
	Unapproved
	Stream/River
	Lake
	No Trail Area
	Parcel
	ROSI Parcel
	Wetlands
	Wetlands (300' Buffer)

General Notes & Data Sources:
This Geographic Information System (GIS) Black Run Preserve Trail Map is for demonstration purposes only, any use of this product with respect to accuracy and precision shall be the sole responsibility of the end user.

The areas, boundaries and details, shown on this Black Run Preserve Trail map, are referenced, in part, from ground surveys, aerial surveys and recorded plans, tax assessment maps and documents, and are to be used for reference purposes only. Bicycle routes and trails acquired in part from the Township of Evesham GIS data, Evesham Township Bikeway Plan, 8/12/03 produced by Orth-Rodgers & Associates, Inc and the Cross County Connection Bike Map of Evesham.

This map is based, in part, on trail assets field located and data collected in Black Run Preserve utilizing GPS equipment and mapped in a CADD drawing file format, performed, and provided by Charles Chelotti PE/Engineering Design Studio LLC. This digital data was collected approximately 3/20/2020 and mapped approximately 6/14/2022. The Overall Delineated Wetlands Plan was performed by Adams, Rehmann & Heggan (ARH), 6/5/2016.

This map was created, in part, utilizing parcel data provided by Burlington County via NJGN as of 2023, and updated by Remington & Vernick Engineers in 2023.

Additional GIS resource data was provided by the New Jersey Geographic Information Network (NJGIN), the New Jersey Department of Transportation (NJDOT), the New Jersey Department of Environmental Protection (NJDEP), the New Jersey Office of Information Technology (NJOT), and the New Jersey Office of GIS (NJOGIS). The data was obtained and provided by the various New Jersey Departments at the New Jersey Geographic Information Network (NJGIN) <https://njgis-newjersey.opendata.arcgis.com>. This secondary product has not been verified by (NJGIN/NJOT/NJOGIS/NJDOT/NJDEP) and is not state-authorized.

All positions are based on the following:

- NAD 83 (horizontal datum)
- New Jersey State Plane Coordinate System
- English units (US Survey Feet)

The geodetic accuracy and precision of the Geographic Information System (GIS) data contained in this mapping has not been developed nor verified by a professional licensed land surveyor and shall not be nor is intended to be used in matters requiring delineation and location of true ground horizontal and/or vertical controls, unless otherwise noted.

DRAFT

Parcels of Black Run Preserve			
Block	Lot	Block	Lot
57	1	57	1.01

Application No	Description
1989-0719.27	Pedestrian Bridge
1993-0341.005	Long Bog Bridge, split rail fence, stone dust surface
1993-0341.006	Long Bog Bridge, split rail fence, stone dust surface
1993-0341.007	REI White Trail
1993-0341.008	Overall Trail Map

Black Run Preserve
Southern Section (Aerohaven)
Trail Map
Evesham Township
 Burlington County New Jersey
 08/22/2022 Scale 1:200

REMINGTON & VERNICK ENGINEERS
 2059 SPRINGDALE ROAD, CHERRY HILL, NJ 08003
 (856) 795-9595, FAX (856) 795-1882, RVE.COM
Certificate of Authorization: 24 GA 28003300
 Excellence • Innovation • Service





Township of Evesham "Respecting Diversity, Preserving Dignity"

Mayor Jaclyn Veasy - Councilwoman Heather Cooper - Councilwoman Ginamarie Espinoza - Councilman Eddie Freeman, III - Councilwoman Patricia Hansen

984 Tuckerton Road • Marlton • NJ 08053 • 856-983-2900 • www.evesham-nj.org

3. Proposed MOA Summary:

In effort to address the overall permitting status of the 700+ acre park, the Township proposes to keep moving forward to document all the trails, parking areas, and items within the park to the Township is seeking permission to remain (kiosk signage and benches). As evidenced by historic aerial imagery most of the trails have existed in the BRP since pre 1979. Additionally, the request includes an existing trail (shown in red on the overall map for the southern section) for permission to remain.

The request includes consideration for direction to continue moving forward with a MOA project that will include approval of the following:

- 1) Western Section: Change in existing trail material surface from earthen to crushed gravel (as was approved for Pemberton Lakes Trail). 4,640 linear feet @ a width of 5 feet, the proposed disturbance is 23,200 square feet, or 0.53 acres. The proposed trail improvements would make the existing trail firm, stable and flat from side to side so it is more accessible to individuals with mobility issues.
- 2) Western Section: Installation of one pedestrian ADA compliant bridge to reconnect two existing trails (that are proposed to be include ADA upgrades).

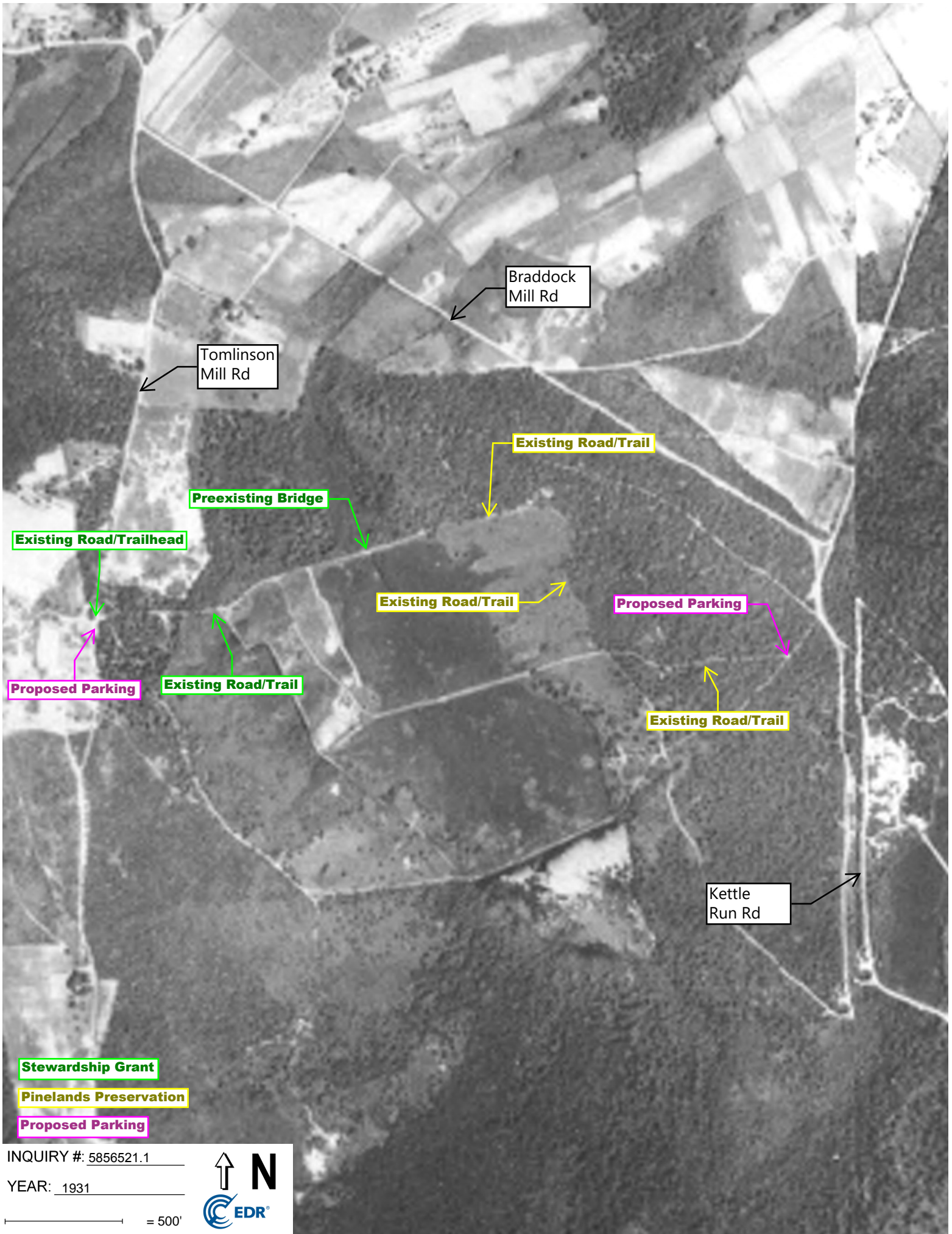


Township of Evesham "Respecting Diversity, Preserving Dignity"

Mayor Jaclyn Veasy - Councilwoman Heather Cooper - Councilwoman Ginamarie Espinoza - Councilman Eddie Freeman, III - Councilwoman Patricia Hansen

984 Tuckerton Road • Marlton • NJ 08053 • 856-983-2900 • www.evesham-nj.org

- 3) To permit existing park amenities to remain including board walks, kiosk signage at parking area, park signage, and benches. To allow additional newly proposed park amenities including park signage and benches as appropriate.
 - 4) To permit 5 existing parking areas to remain and to include changes in surface material to allow the installation of ADA compliant parking spaces.
 - 5) To permit the existing trail shown in red (southern section) to remain.
4. Partners involved in this effort to address permitting within the BRP:
- i. Evesham Township
 - ii. Friends of Black Run Preserve
 - iii. Pinelands Preservation Alliance



Braddock Mill Rd

Tomlinson Mill Rd

Existing Road/Trail

Preexisting Bridge

Existing Road/Trailhead

Existing Road/Trail

Proposed Parking

Proposed Parking

Existing Road/Trail

Existing Road/Trail

Kettle Run Rd

Stewardship Grant

Pinelands Preservation

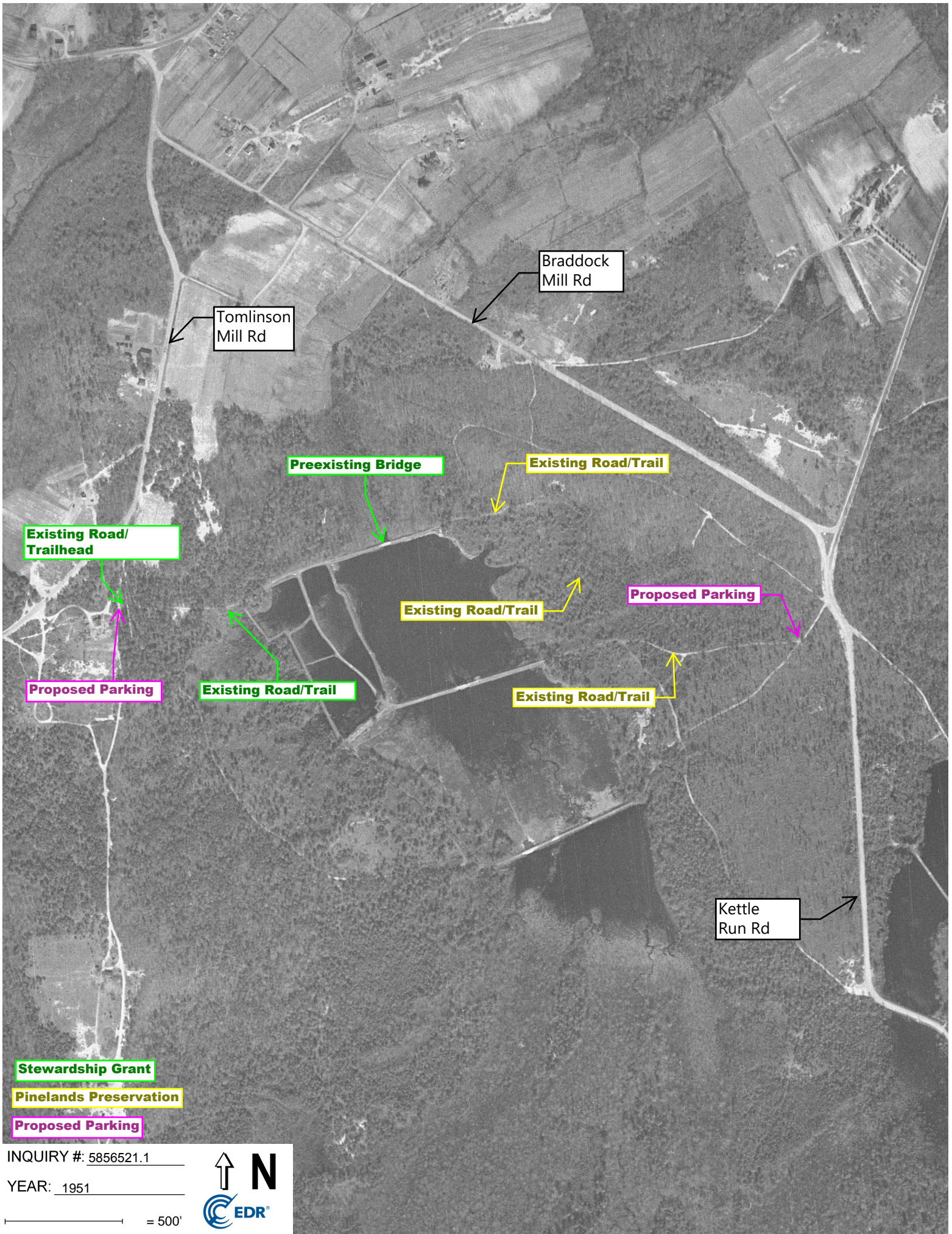
Proposed Parking

INQUIRY #: 5856521.1

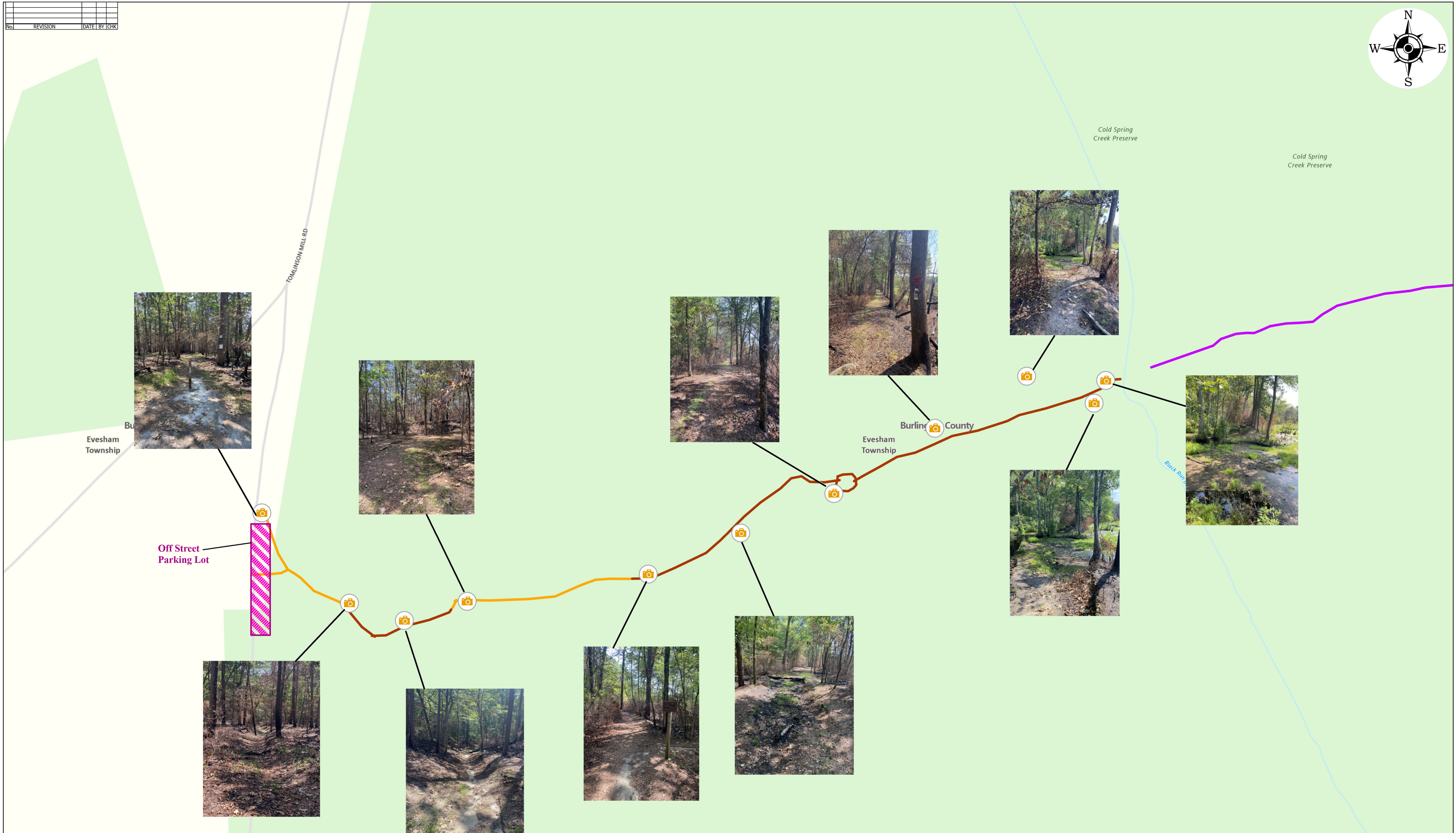
YEAR: 1931

Scale bar: = 500'





No.	REVISION	DATE	BY	CHK



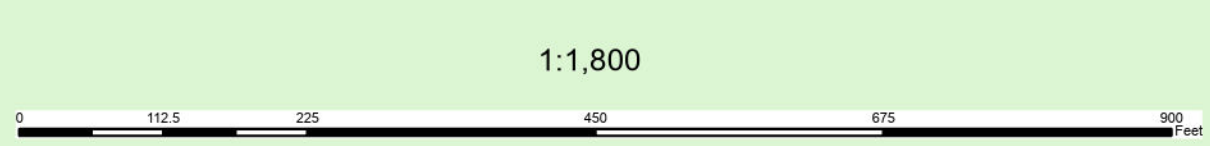
Source: Esri, DeLorme, Garmin, etc.
 This map was created using GIS software. The geographic information system (GIS) data used in this map was obtained from the New Jersey Department of Environmental Protection (NJDEP) and the New Jersey Department of Transportation (NJDOT). The map is not intended to be used for navigation or other purposes. The map is not a substitute for a field visit. The map is not a guarantee of accuracy. The map is not a warranty of performance. The map is not a contract. The map is not a representation of the future. The map is not a prediction of the future. The map is not a forecast of the future. The map is not a statement of opinion. The map is not a statement of fact. The map is not a statement of law. The map is not a statement of policy. The map is not a statement of position. The map is not a statement of intent. The map is not a statement of purpose. The map is not a statement of result. The map is not a statement of value. The map is not a statement of quality. The map is not a statement of quantity. The map is not a statement of quality. The map is not a statement of quantity. The map is not a statement of quality. The map is not a statement of quantity.

Legend

- TRAIL/ROAD
- ADJACENT TRAIL
- TRAIL Existing
- Field Photos

BLACK RUN PRESERVE TRAIL IMPROVEMENT
 EVESHAM TOWNSHIP
 BURLINGTON COUNTY NJ
 07/19/2023 SCALE: 1" = 150'
REMINGTON & VERNICK ENGINEERS
 2059 SPRINGDALE ROAD, CHERRY HILL, NJ 08003
 (856) 795-9595, FAX (856) 795-1882, RVE.COM
 Certificate of Authorization: 24-G-28803390
 Excellence • Innovation • Service

DRAFT



Black Run Preserve Accessibility Trail Enhancement



PINELANDS
PRESERVATION
ALLIANCE



Proposal by Pinelands Preservation Alliance and Evesham Twp.

The importance of this project

1. Create an inclusive low-impact recreation site for the community.
2. Promote community health and wellness.
3. Provide a safe space for gathering and activity for everyone.
4. Encourage low-impact activity for all members of the community.
5. Provide inclusive access to conserved wild areas with great scenic views.
7. Help all residents connect with Evesham's natural places.
8. Improve overall value of the preserve for the community.

Scouting the Site



Scouting the Site



Scouting the Site



Why do the work: Health, Recreation, Education, Community Connection



Why do the work: Health, Recreation, Education, Community Connection



Why do the work: Health, Recreation, Education, Community Connection



Examples of Similar Work: County Park Level



Boundary Creek – Burlington County Parks

Examples of Similar Work: County Park Level



Eno's Pond – Ocean County Parks

Examples of Similar Work: State Park Level



Wharton State Forest, Batsto Village –
Red Trail



Atsion Recreation Area – Red/Blue
Trail

Examples of Similar Work: State Park Level



Brendan T. Byrne State Forest – Cranberry Trail



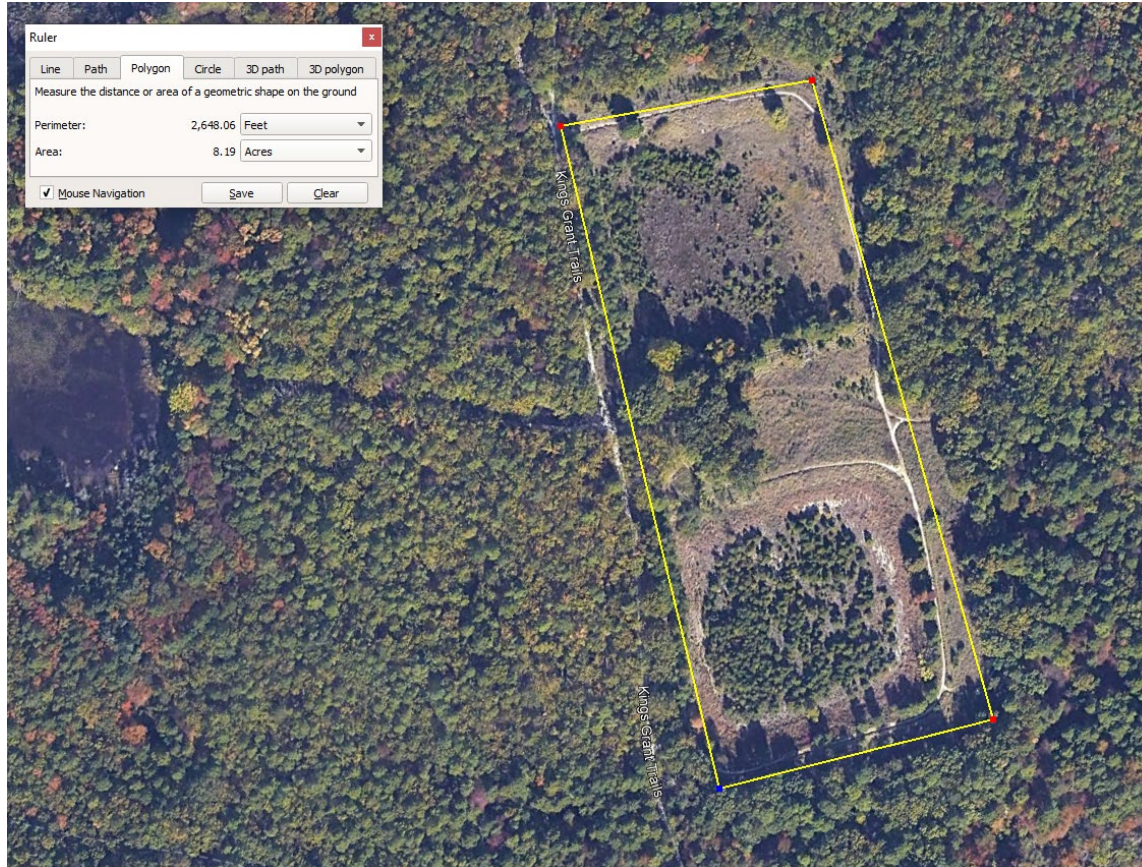
Township of Evesham

"Respecting Diversity, Preserving Dignity"

Mayor Jaclyn Veasy - Councilwoman Heather Cooper - Councilwoman Ginamarie Espinoza - Councilman Eddie Freeman, III - Councilwoman Patricia Hansen

984 Tuckerton Road • Marlton • NJ 08053 • 856-983-2900 • www.evesham-nj.org

5. Offset Approximate Work Area = 8+ Acres. Restoration of former MUA basins.



Pinelands Conservation Fund Priorities, Funding & Schedule

Policy & Implementation Committee
February 23, 2024

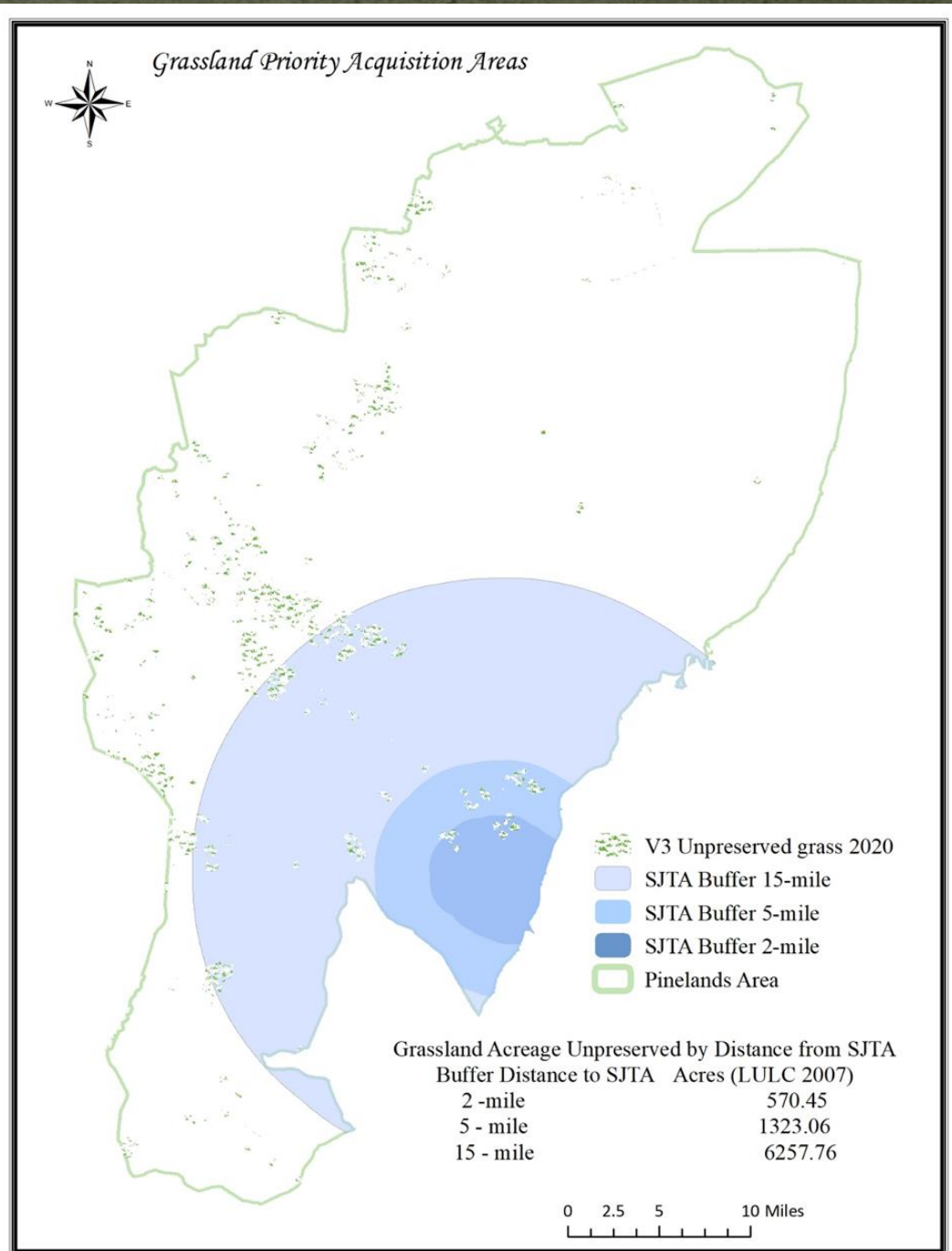
Background

- Permanent land protection:
 - 51% of Pinelands Area
- 20 Planning & Section 502 Acquisition Target Areas
 - All appropriated Federal funding for Section 502 areas expended
 - Rely on PCF to achieve Permanent Land Protection goals (\$9.5 M/8,971 acres preserved to date)
- Additional \$3 M funding added to PCF through SJTA MOA 2019-2024
- PCF acquisition priorities revised in 2021, but few projects

Land Acquisition Priorities -2021

- Grassland habitats
- Impacts of climate change
 - Fire hazard
 - Flood hazard
 - Carbon sequestration
- “Traditional” acquisitions
 - 502 Fund Areas
 - 20 Acquisition Target Areas

Grassland Focus Area



Project Evaluation Matrix

2021 & 2022

Factor	Low (1)	Medium (3)	High (5)
Location: Is the project in PCF focus area	In RGA, Town, Village or Rural Development Area AND none of the designated focus areas	In designated focus areas and PAD, SAPA, APA or Forest Area	Within a five-mile radius of SJTA and inside the State Pinelands Area
T&E Habitats:	No state/federal T&E habitat per NJDEP Landscape Model AND no NJPC and ENSP sightings	T&E habitat exists based upon NJDEP Landscape model and/or NJPC and ENSP sightings	Grassland habitat exists based upon NJDEP Landscape model and/or NJPC and ENSP sightings
Size:	Less than 50 acres	Between 50 and 100 acres	100 acres or more; add 3 additional points if greater than 500 acres
Contiguity:	Greater than one mile from preserved habitat or open space	Less than one mile from known grassland T&E habitats but not contiguous	Contiguous with preserved habitat or open space
Partner Contribution:	67.7% of acquisition costs	At least 75% acquisition costs	Greater than 75% acquisition costs
Long-Term Maintenance Capability:	No monitoring or maintenance plan/ no identified land steward	Proposed Monitoring and maintenance plan; Not previously implemented	Established Monitoring and maintenance program / Gov't. agency or NGO is prepared to manage land
Climate Change Mitigation:	Flood hazard mitigation	Wildfire Management	Carbon Sequestration/ Storage
Purpose:	Historic Preservation	Open Space	T & E or Climate Change

Extra points for carbon sequestration involving Atlantic cedar swamps.

2024 Changes

Goals to be
achieved

- Increase project participation over recent years' PCF rounds
- Support climate mitigation identified by Climate Committee PMA boundary analysis
- Address environmental justice initiatives
- Continue to build successful stewardship of preserved lands
- Add two Acquisition Target “planning” areas

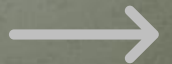
Project Priorities - 2024

Acquisition target areas

- Climate committee recommendations for one expanded and one new acquisition target area
 - Maurice River Township – Port Elizabeth-Bricksboro Village
 - Pemberton Township – RGA

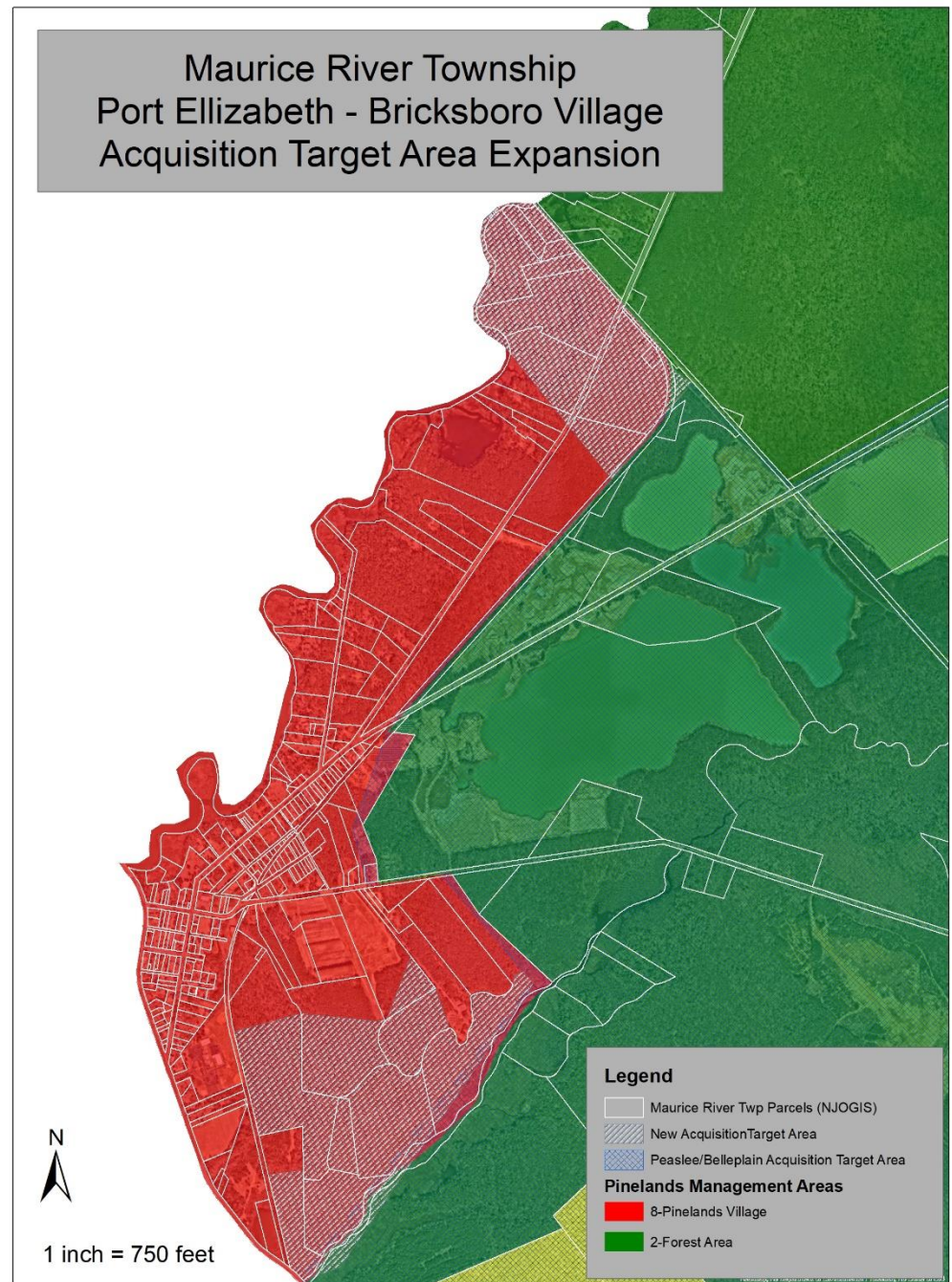
Priority Matrix changes

- Add PCF criteria for location in or adjacent to overburdened communities
- Maintenance agreement
- Additional points awarded for grassland maintenance objective



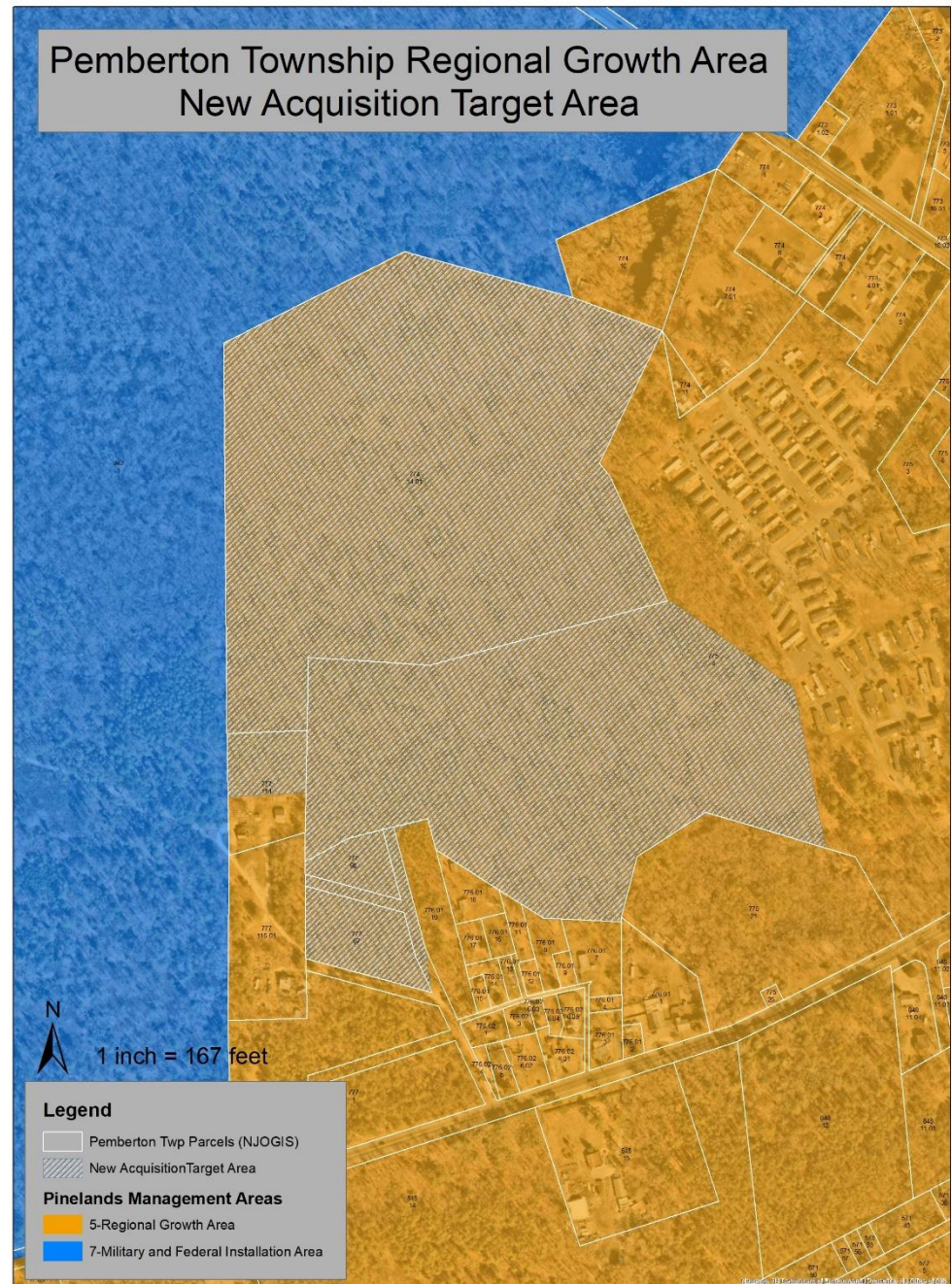
Expanded Acquisition Target Area

- Came from Pinelands Management Area analysis for climate change impacts
- Endorsed by the Climate Committee



New Acquisition Target Area

- Came from Pinelands Management Area analysis for climate change impacts
- Endorsed by the Climate Committee



Project Evaluation Matrix

2024

Factor	Low (1)	Medium (3)	High (5)
Location ¹ : Is the project in PCF focus areas for flood or wildfire	In RGA, Town, Village or Rural Development Area AND one of the designated focus areas	In designated focus areas and PAD, SAPA, APA or Forest Area	Within a five-mile radius of SJTA and inside the State Pinelands Area
T&E Habitats ² :	No state/federal T&E habitat per NJDEP Landscape Model AND no NJPC and ENSP sightings	T&E habitat exists based upon NJDEP Landscape model and/or NJPC and ENSP sightings	Grassland habitat exists based upon NJDEP Landscape model and/or NJPC and ENSP sightings
Size:	Less than 50 acres	Between 50 and 100 acres	100 acres or more; add 3 additional points if greater than 500 acres
Contiguity:	Less than one mile from preserved open space	Less than one mile from known grassland T&E habitats but not contiguous	Contiguous with preserved habitat or open space
Partner Contribution:	66.7% of acquisition costs	At least 75% of acquisition costs	Greater than 75% of acquisition costs
Maintenance & Stewardship:	Written maintenance /stewardship plan	Written maintenance/ stewardship plan and specific stewardship project proposal	Written maintenance/ stewardship plan and agreement to partner on future grant proposal for stewardship projects
Environmental Justice Communities Stressors ³ :	One stressor identified	Three or four stressors identified	More than five stressors identified

Add'l Evaluation Notes

- Projects must be located in Section 502 acquisition target areas or in one of the Pinelands Commission identified 21 acquisition target areas
- An additional three points will be awarded for projects that are intended to preserve open space with the objective of maintaining grassland habitat.
- Environmental Justice Community stressors are identified by NJDEP and include: high ozone, heavy traffic, known contaminated sites, solid waste facilities, and impaired surface water among other stressors.

Funding Structure Changes

- Enhance stewardship success
 - Increase traditional 33% PCF match for projects with specific stewardship plans
 - Allow partner to set aside funds for stewardship
 - No change in funding for other projects
- Build a better grant proposal (future ATB?)
 - Identify sites
 - Partners
 - Projects
 - Costs
 - Benefits

Permanent Land Protection Schedule (2024)

- P & I Authorization of PCF Priorities - February
- Preservation Summit – early April
- Report on Summit – April P & I Committee
- Open application round ~ early May
- Deadline for submitting proposals ~ September
- Project Recommendations to P & I ~ October