

Ocean County's Amendment to the Public Safety Tower Plan

Policy & Implementation Committee
June 30, 2017



A photograph of a street scene with a yellow banner overlaid containing the word "Background". The background shows a street with utility poles, buildings, and American flags. A sign for "Homestead" is visible on a building. The banner is a horizontal yellow rectangle with the word "Background" in a bold, yellow, serif font.

Background

Local Communications Facilities (LCF)

Height Limits:

RGA & Pinelands Towns = No limit

Everywhere else = 35 foot limit

Local Communications Facilities Regulations

RGA and Pinelands Town – N/A

Everywhere else – LCF up to 200 feet tall, provided that:

- Demonstrate need
- Colocation on existing suitable structures
- Design towers to accommodate other providers
- Siting standards for new towers
- Comprehensive planning
 - Applications for individual applications after plan

Summary of Comprehensive Plans

Plan	Certified	Participants
Cellular Plan	9/11/1998	Bell Atlantic Mobile; Comcast/Cellular One; Nextel
PCS Plan	1/14/2000	Sprint; Omnipoint
AT&T Plan	12/12/2003	AT&T
T-Mobile Plan	11/10/2011	T-Mobile
Sprint Plan	11/8/2013	Sprint
Public Safety Tower Plan	5/11/2012	Pinelands Counties

Public Safety Tower Plan

Commission Certified: May 11, 2012

Participants: Seven Pinelands Area counties

Purpose: Comprehensive plan for County facilities necessary to provide critical public safety communications coverage within the Pinelands Area.

Proposed Facilities: 49 total

- **Phase 1 & 2** : 22 (1 built; 1 approved)
- **Phase 3** : 27 (0 built; 0 approved)

Siting Policy & Search Area

- Each LCF Plan has an approved siting policy
 - Acknowledges uncertainty of long-range plans
 - Provides final siting flexibility with constraints
 - Bounded by the search area radius
 - Hierarchy of preferred management areas

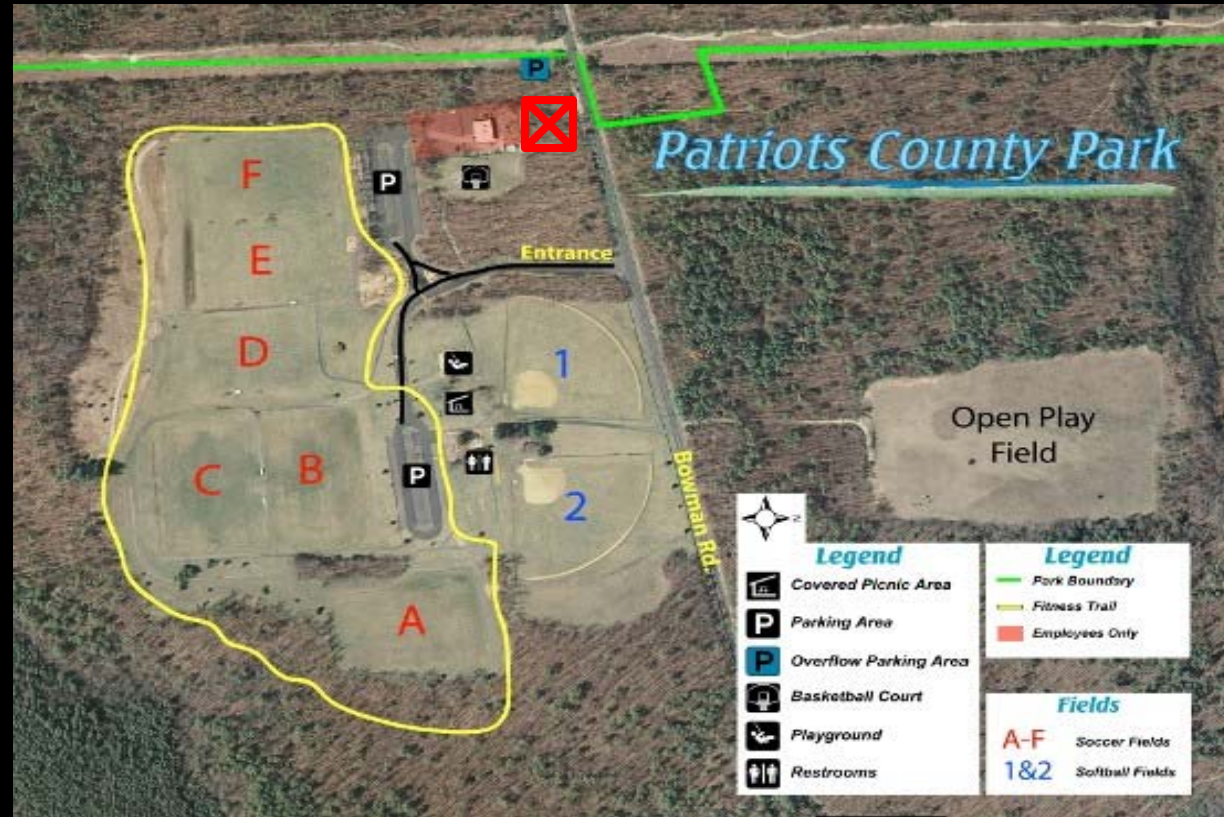
LCF Plan	Service Frequency (in MHz)	Search Area Extent (in miles)
Cellular Plan	800	5
PCS Plan	1850-1900	0.5
AT&T Plan	1850-1900	0.5
T-Mobile Plan	1850-1900	1
Sprint Plan	1850-1900	1
Public Safety Tower Plan	700	1

Hierarchy
Outside the Pinelands
RGA/PT
RDA, APA, Select Villages
PAD, FA, SAPA, Select Villages

Ocean County Proposed Tower

Originally Proposed Site: Patriots Park

- Rural Development Area
- ROSI List



Ocean County Proposed Tower

Newly Proposed Site: County Roads Garage

- Pinelands Village
- Meets coverage needs; less disturbance and visual impacts

2.5 miles
from
Patriots
Park





Amendment Summary

Proposed Amendment

1. It expands the extent of the search area for the final siting of a proposed facility from a 1-mile radius to a 3-mile radius.
2. It provides greater flexibility when siting a facility on developed, publically-owned land.

Proposed Amendment

- The amendment does not include any additional proposed facilities.
- Applies only to facilities proposed in the Public Safety Tower Plan.
- Applies to all of the proposed Phase 1 and 2 facilities within the Public Safety Tower Plan.