

THOMAS TUCCI, JR.  
Chairman

LUIS A. QUINTANA  
Vice Chairman

ELIZABETH CALABRESE  
JOHN J. COSGROVE  
MILDRED C. CRUMP  
JAMES P. DORAN  
JOSEPH F. ISOLA  
HECTOR C. LORA  
BRENDAN MURPHY  
Commissioners



GREGORY A. TRAMONTOZZI  
Executive Director

MATTHEW F. MURRAY  
Clerk

*“Protecting Public Health and the Environment”*

600 Wilson Avenue, Newark, New Jersey 07105  
(973) 817-5700  
(973) 817-5738- fax  
[www.nj.gov/pvsc](http://www.nj.gov/pvsc)

**For Immediate Release**

January 28, 2021

**Contact Information: Doug Scancarella**

[dscancarella@pvsc.com](mailto:dscancarella@pvsc.com), 973-817-5735

## **PVSC Restoring Two Historic, Century Old Buildings At Newark Plant**

**Newark, NJ** – The two oldest buildings at the Passaic Valley Sewerage Commission (“PVSC”) Plant, the Wet Weather Pump Station (constructed in 1914) and the adjacent Venturi Meter Chamber (constructed in 1917), are being restored to like-new condition. Factors such as weather, frequent usage and the passage of time have contributed to their wear and tear.

Work began on the Venturi Meter Chamber in the fall and should be completed by the end of the summer. PVSC has been accurately and reliably measuring its wastewater flow in this chamber for more than a century.

Work on the Wet Weather Pump Station (originally known as the Newark Bay Pump Station) will begin this summer. Both buildings feature elaborate and decorative terracotta facades that need to be repaired.

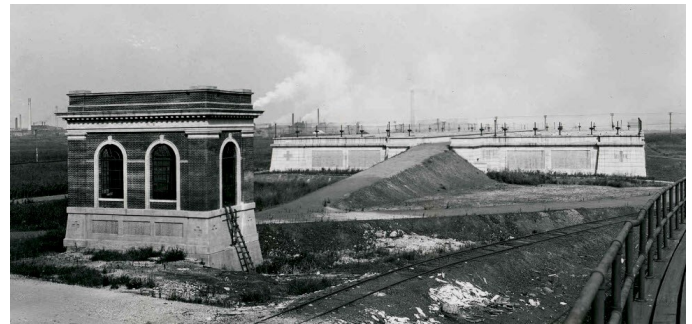
“The exterior face of both buildings is quite ornate. Both feature several different design elements,” said PVSC Chairman Thomas Tucci, Jr. “Restoring and preserving their architectural beauty and historical character requires a lot of meticulous planning.”

The work currently being done on the Venturi Meter Chamber includes:

- Repointing all bricks;
- Installing a steel roof superstructure;
- Installing new windows;
- Adding a floor deck;
- Adding an interior staircase; and
- Repainting the interior.

“PVSC has been one of the premier sewer utilities in the United States for more than a century. These structures have played an important role in that history,” Mr. Tucci said. “By preserving them, we are making sure that they will play a significant role in our future.”

###



*Images: The Venturi Meter Chamber in 1922 (top) and during restoration (second row). The Wet Weather Pump Station in 1922 (right) and today (below).*

