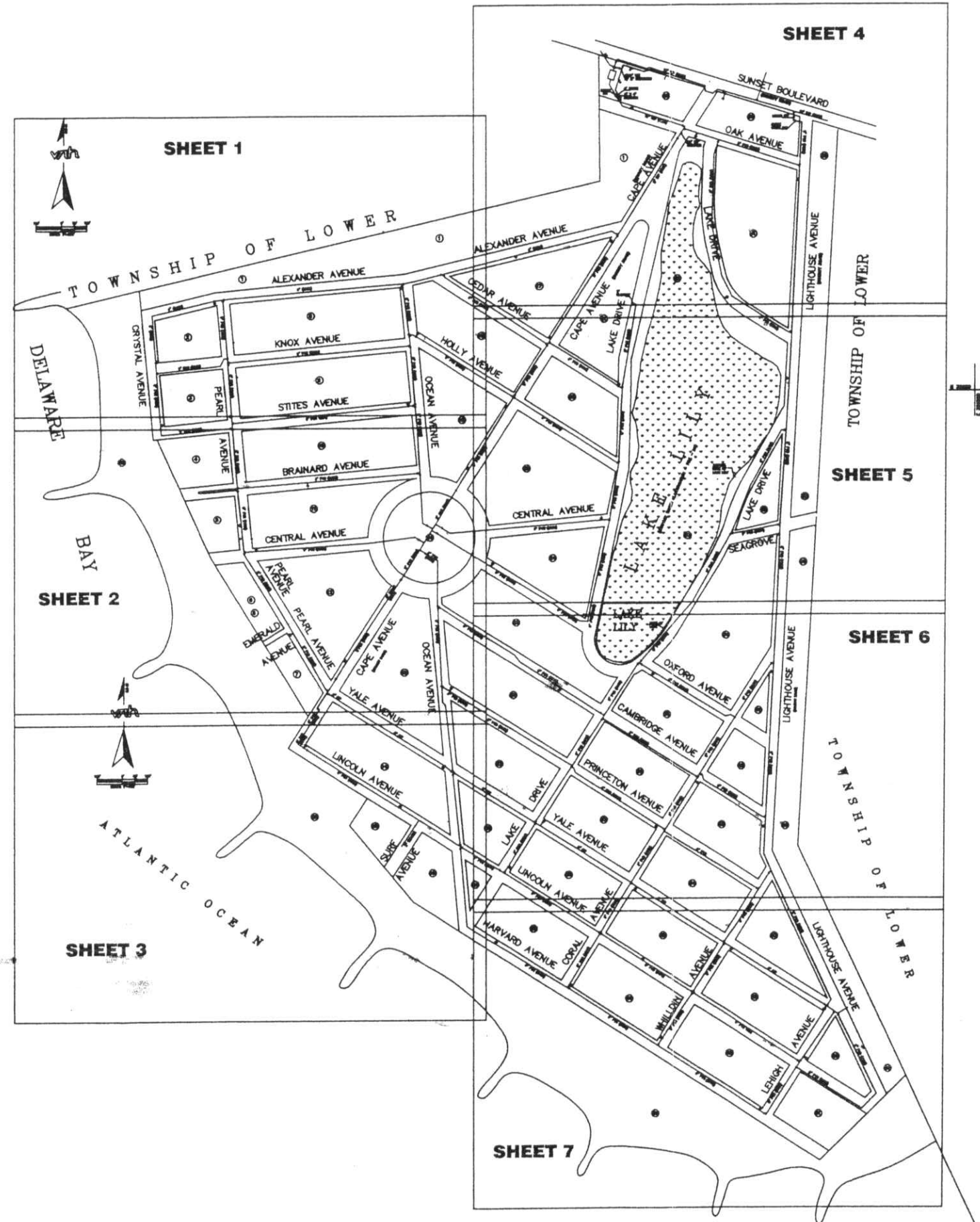





# WATER SYSTEM AND SANITARY SEWER PLANS BOROUGH OF CAPE MAY POINT



**LEGEND**

 FIRE HYDRANT  
 WATER VALVE  
 6" PVC (1989) TYPE OF PIPE (YEAR INSTALLED)

DEPT. OF  
COMMUNITY AFFAIRS  
OFFICE OF SMART GROWTH

2009 APR -7 A 10:25

DATE APP. BY		DATE	3/1/89
DESCRIPTION		DATE	3/1/89
REV.		DATE	3/1/89
INDEX OF SHEETS			
WATER SYSTEM PLANS			
BOROUGH OF CAPE MAY POINT			
CAPE MAY COUNTY			
van note-harvey associates consulting engineers, planners, & land surveyors (609) 465-2600 233 North Main Street Cape May Court House, N.J. 08210 Fax: (609) 465-2601 www.vanharvey.com			
FILE NO.	N/A	DRAWN BY	BMP
ORDER NO.	03-21	FIELD N/A	BOOK
	32104-22	PAGE N/A	
KEY SHEET			



TOWNSHIP OF LOWER

ALEXANDER AVENUE

①

50' 100'

"=100'

6" (1989)

DELIANAR

CRYSTAL AVENUE

PEARL

KNOX AVENUE

STITES AVENUE

OCEAN AVE

HOLLY AVE  
6" PVC (1996)

van note-harvey associates  
consulting engineers, planners, & land surveyors

החל

## WATER SYSTEM PLANS

BOROUGH OF CAPE MAY POINT  
CAPE MAY COUNTY

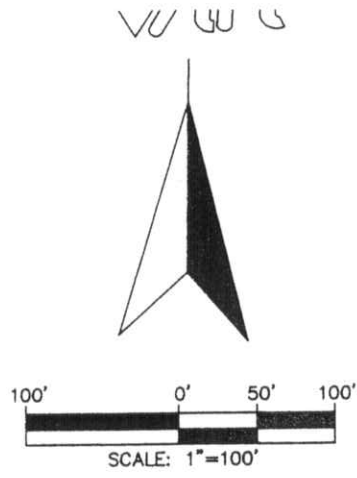
DATE 3/10/99  
NDPE #24787

FILE NO.  
N/A  
ORDER NO.  
4-21  
104-22

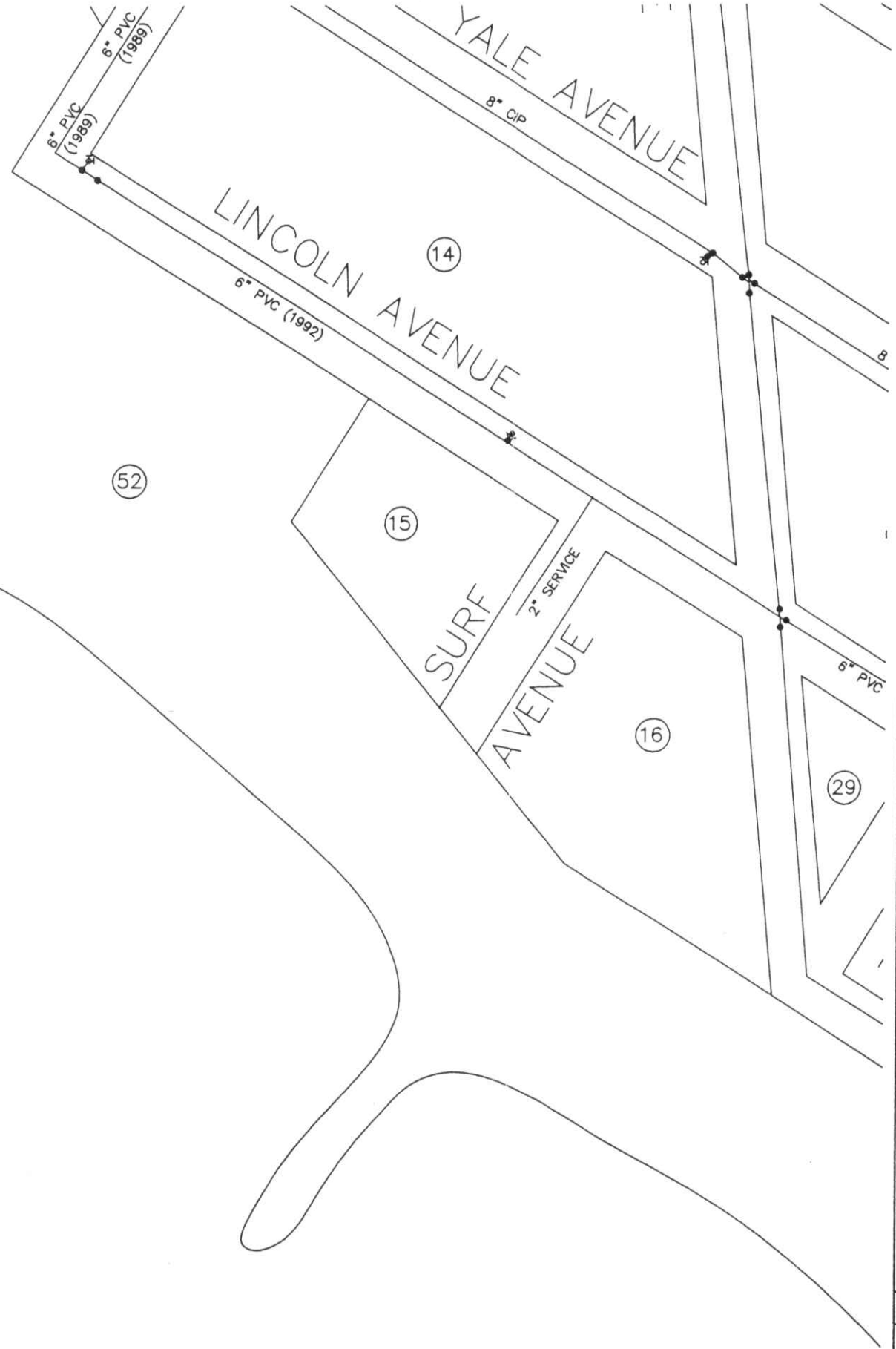
DRAWN BY	BMP
FIELD BOOK	N/A
PAGE	N/A

SHEET 1

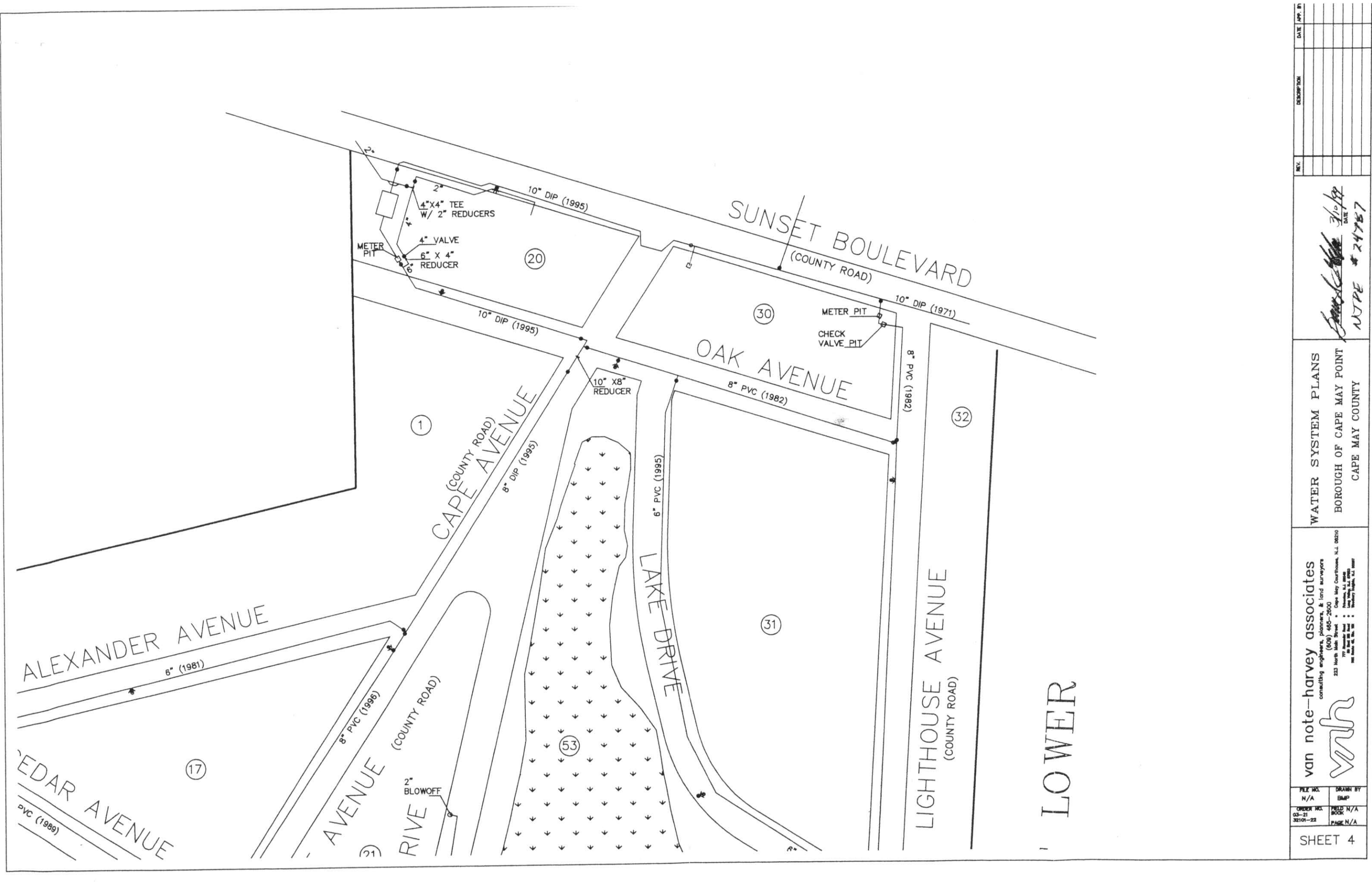




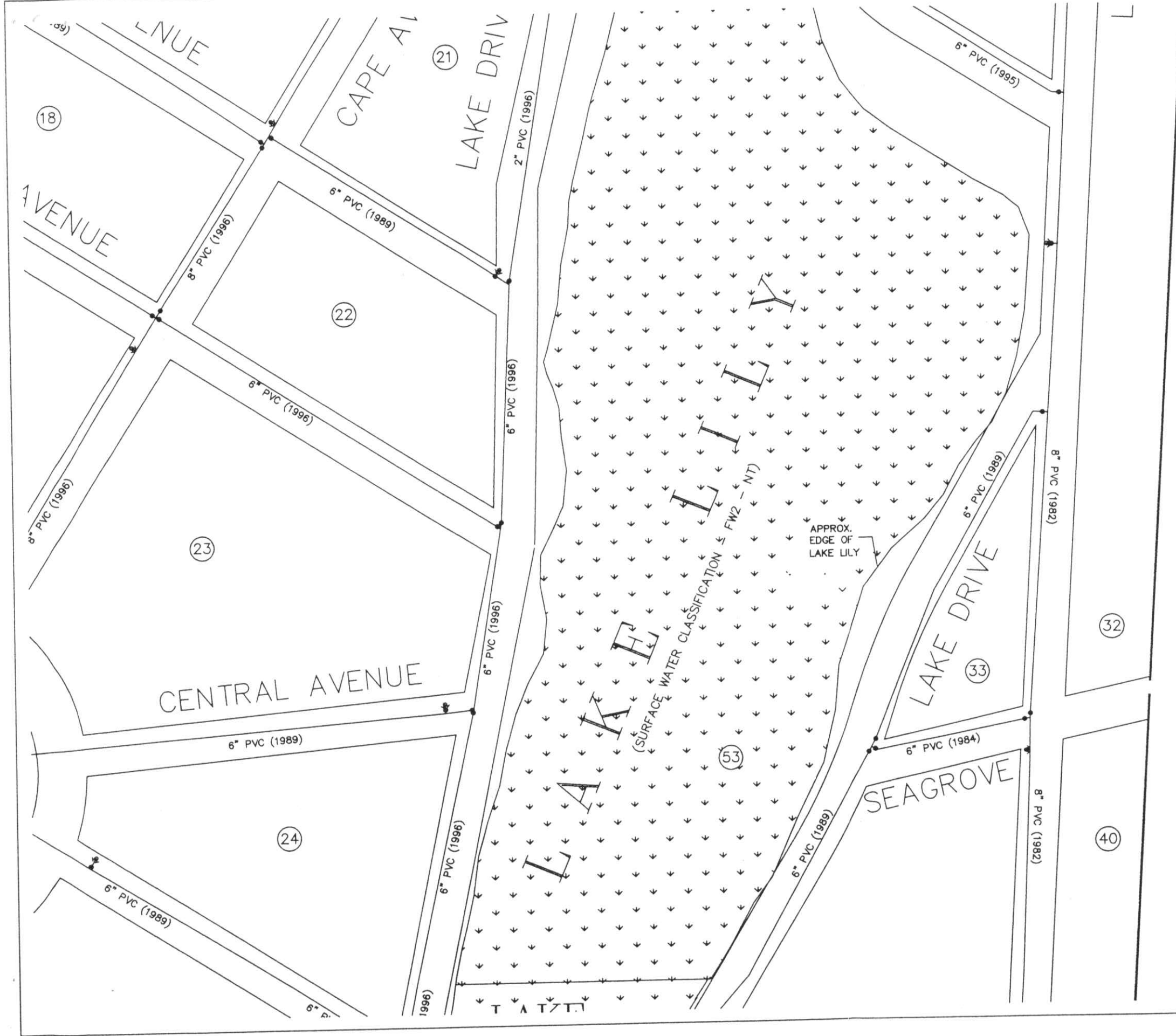
ATLANTIC OCEAN



van note-harvey associates consulting engineers, planners, & land surveyors (609) 465-2600 222 North 10th Street Atlantic City, NJ 08401 Fax: (609) 465-2601 www.vanharvey.com		WATER SYSTEM PLANS BOROUGH OF CAPE MAY POINT CAPE MAY COUNTY		DATE: 3/10/99 TIME: 2:47 PM	
FILE NO. N/A	ORDER NO. 03-21 32104-22	DRAWN BY BMP	FIELD N/A BOOK	DATE 3/10/99	TIME 2:47 PM
SHEET 3					



<b>van note-harvey associates</b> consulting engineers, planners, & land surveyors (609) 465-2000 232 North Main Street • Cape May Courthouse, N.J. 08210 775 North Main Street • Hammonton, NJ 08037 and other offices in NJ and DE		<b>WATER SYSTEM PLANS</b> BOROUGH OF CAPE MAY POINT CAPE MAY COUNTY		REV. <i>[Signature]</i> 3/10/99 DATE NYPE # 24767	
FILE NO. N/A	DRAWN BY BMP	DESCRIPTION	DATE	APP. BY	
ORDER NO. 03-21 32101-22	FIELD N/A BOOK				
SHEET 4					



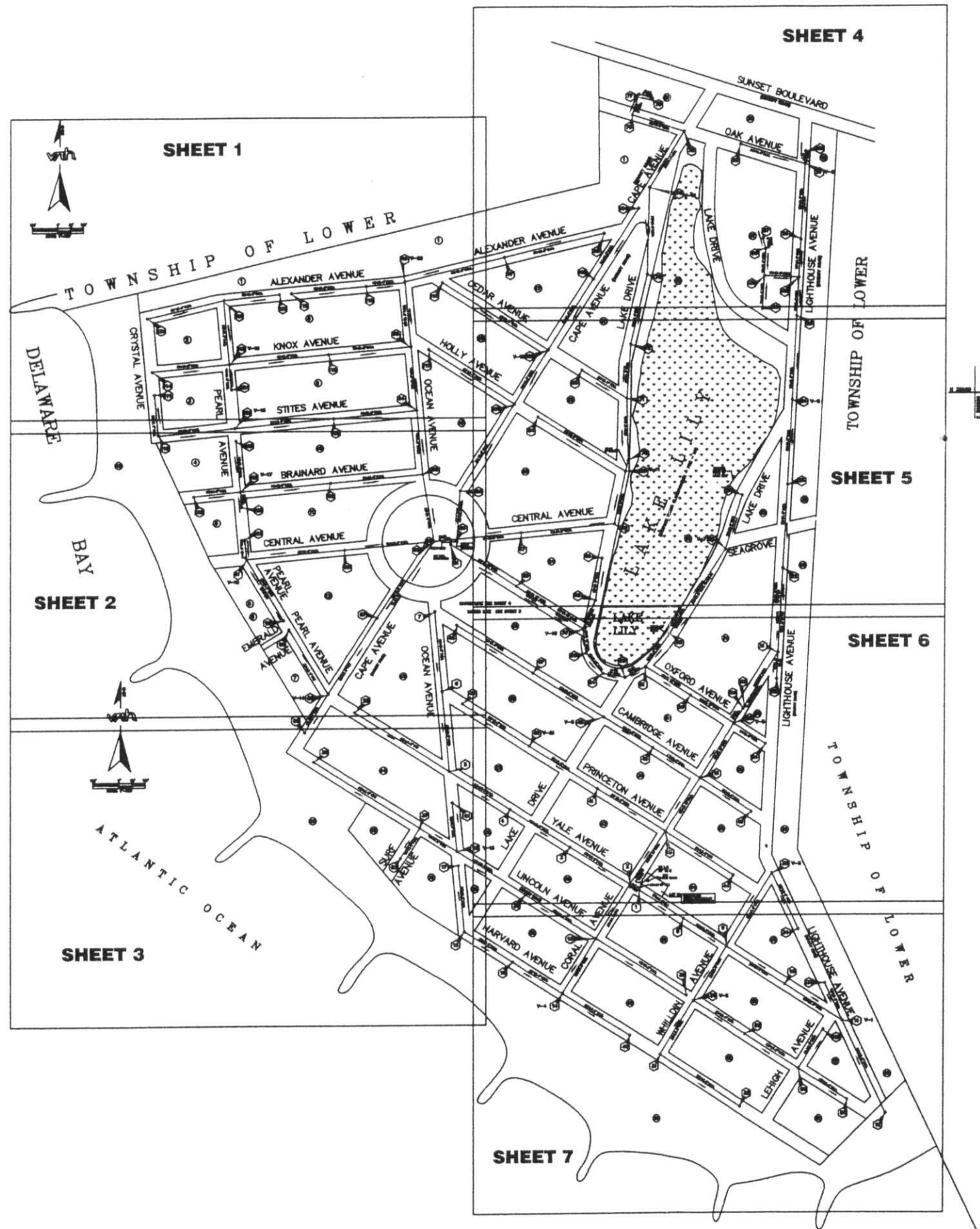
TOWNSHIP OF

van note-harvey associates consulting engineers, planners, & land surveyors (609) 460-2600 223 North Main Street • Cape May Courthouse, N.J. 08210 772 Atlantic Road • Hammock, N.J. 08534 and other offices in the U.S. •		WATER SYSTEM PLANS BOROUGH OF CAPE MAY POINT CAPE MAY COUNTY		REV. DATE DATE APP. BY	
FILE NO. N/A		DRAWN BY BMP			
CHECKED NO. 03-21 322104-22		FIELD N/A BOOK			
PAGE N/A		SHEET 5			

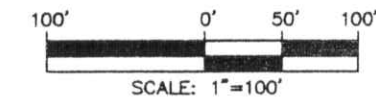




van note-harvey associates consulting engineers, planners, & land surveyors (609) 485-2900 223 North Main Street • Cape May Courthouse, N.J. 08210 Cape May, N.J. 08210 777 Atlantic Road • Atlantic City, N.J. 08401 and 1000 N. 1st St. • Philadelphia, Pa. 19106		WATER SYSTEM PLANS BOROUGH OF CAPE MAY POINT CAPE MAY COUNTY		DATE: 3/1/87 BY: [Signature] N-J PE # 24757	
FILE NO. N/A	DRAWN BY BMP	REV.	DESCRIPTION	DATE	APP. BY
ORDER NO. 03-21 0210-22	SHEET N/A				
SHEET 7					



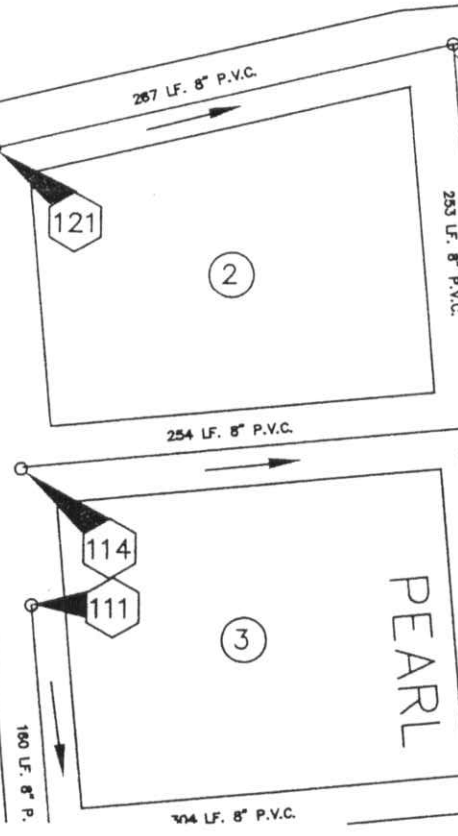
<p>van note-harvey associates consulting engineers, planners, &amp; land surveyors (609) 465-2600 233 North Ninth Street Cape May Court House, N.J. 08210</p>		<p>INDEX OF SHEETS BOROUGH OF CAPE MAY POINT CAPE MAY COUNTY</p>		<p>DATE / APP. BY 3/10/87 DATE 3/24/87</p>	
FILE NO. N/A	DRAWN BY BMP	DESCRIPTION	REV.	DATE	BY
ORDER NO. 03-21 32104-22	FIELD N/A BOOK				
KEY SHEET					



# TOWNSHIP OF LOWER

DELAWARE

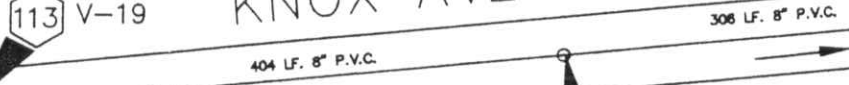
CRYSTAL AVENUE



ALEXANDER AVENUE



KNOX AVENUE



STITES AVENUE



96 V-20

95

94

OCEAN AVE

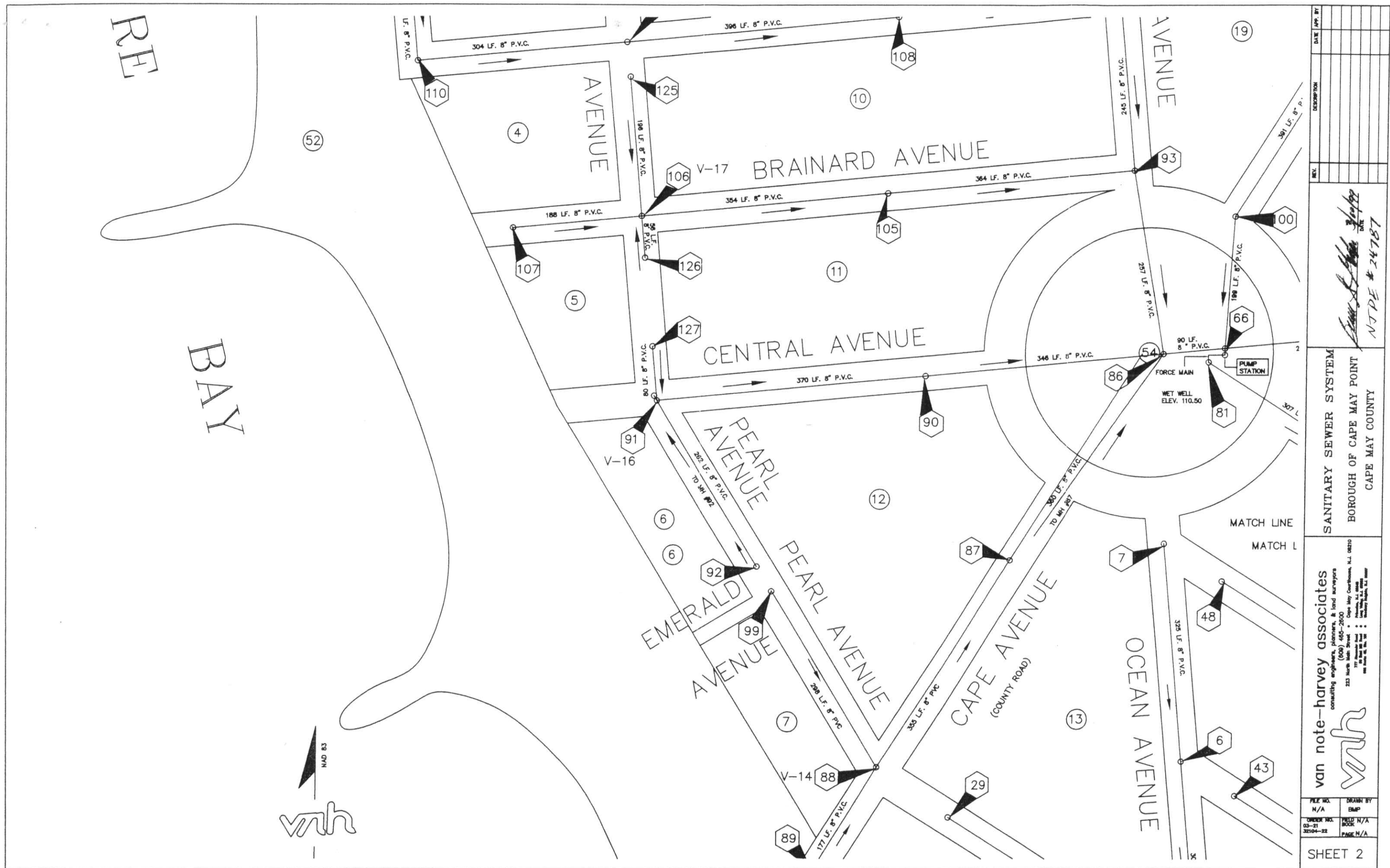
HOLLY AVE

400 LF. 8" P.V.C.

397 LF. 8" P.V.C.

CEDAR

SANITARY SEWER SYSTEM	
BOROUGH OF CAPE MAY POINT	
CAPE MAY COUNTY	
DATE: 3/10/97	
NO. PE #24787	
van note-harvey associates	
consulting engineers, planners, & land surveyors	
(609) 465-2600	
233 North Main Street	
Cape May Court House, N.J. 08210	
van note-harvey associates	
N/A	
DRAWN BY	
BMP	
SHEET 1	



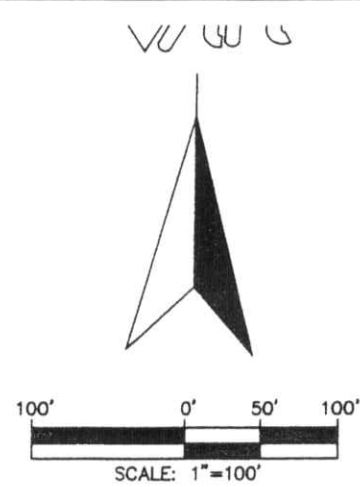
SANITARY SEWER SYSTEM  
BOROUGH OF CAPE MAY POINT  
CAPE MAY COUNTY

**van note-harvey associates**  
consulting engineers, planners, & land surveyors  
(609) 465-2600  
223 North Main Street • Cape May Courthouse,  
177  
Pine Barren, N.J. 08255  
1000 Route 108, Box 101  
Indian Rocks Beach, FL 33797

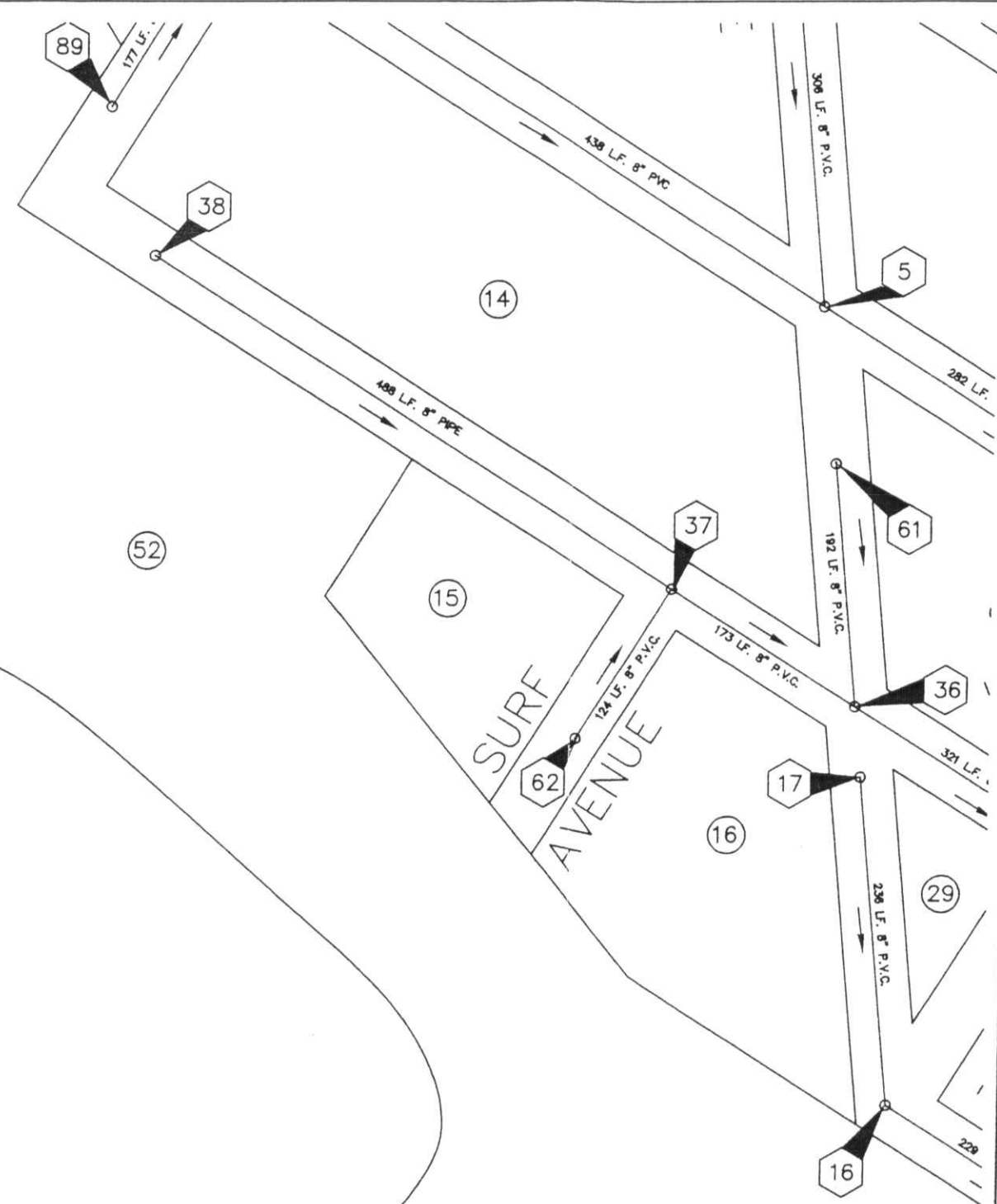
8

FILE NO. N/A	DRAWN BY BMP
ORDER NO. 03-21 32104-22	FIELD N/A BOOK PAGE N/A

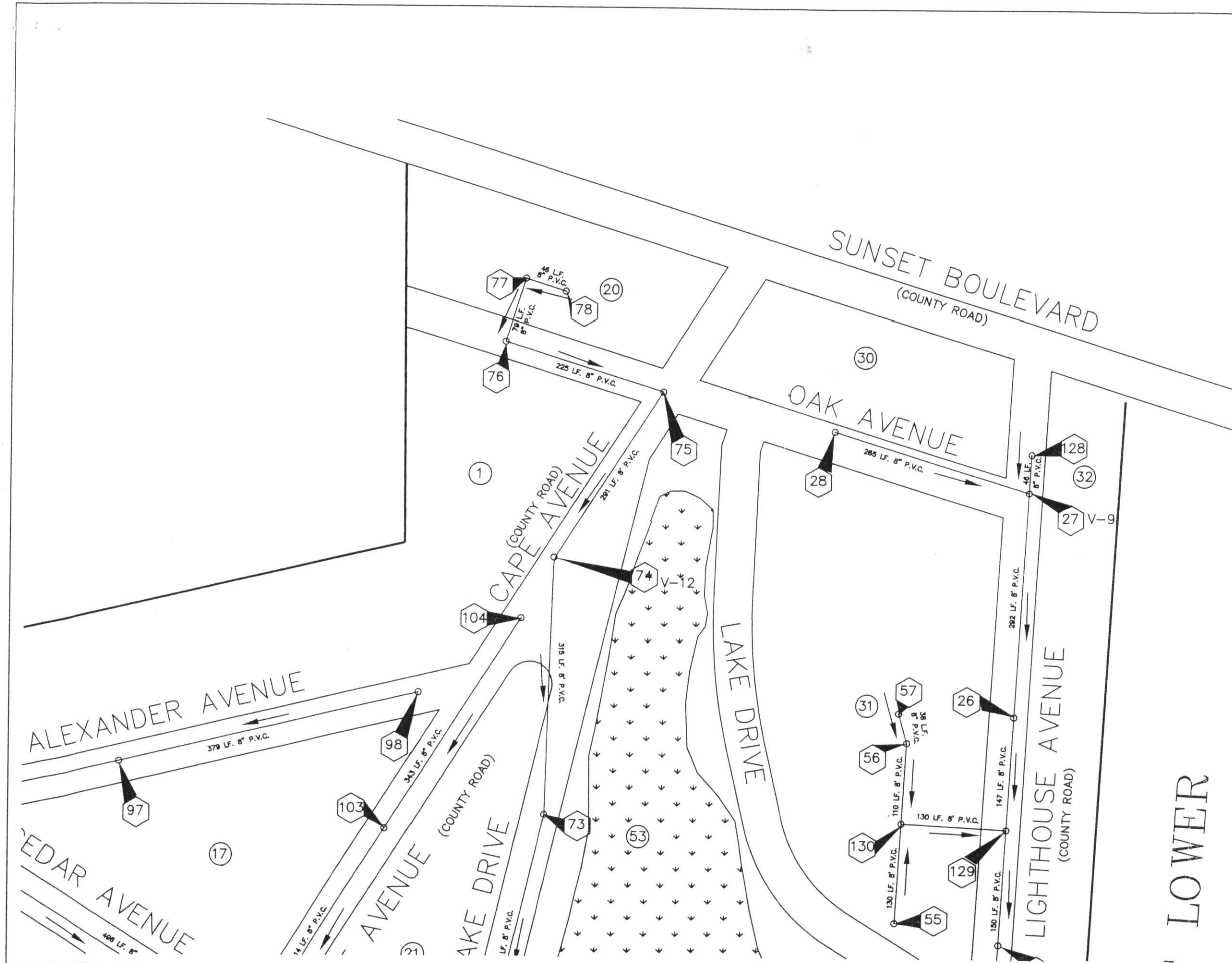
SHEET 2



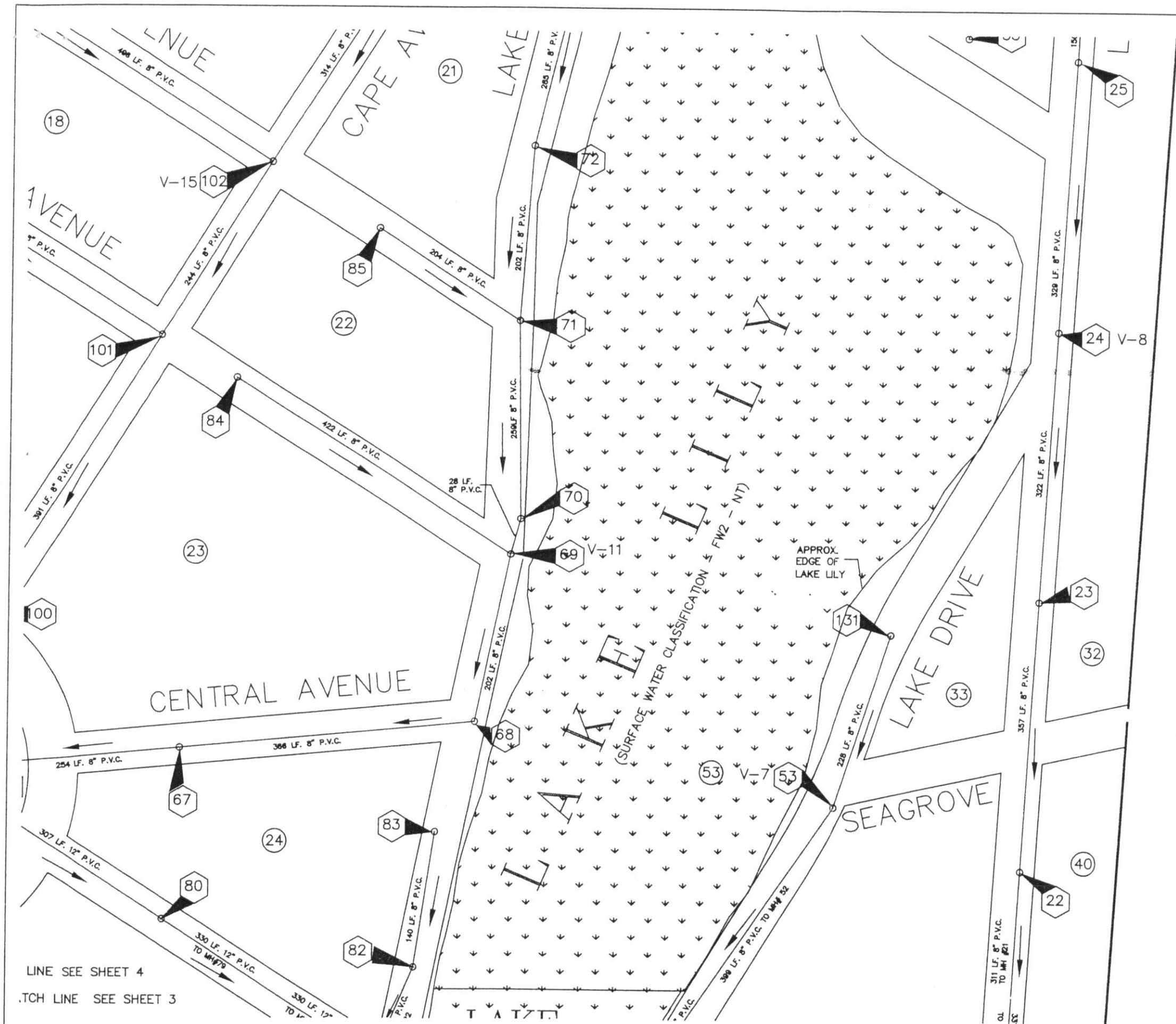
ATLANTIC OCEAN



van note-harvey associates consulting engineers, planners, & land surveyors (609) 465-2800 223 North Main Street Cape May Courthouse, N.J. 08210 Cape May, NJ 08210 www.vanharvey.com		SANITARY SEWER SYSTEM BOROUGH OF CAPE MAY POINT CAPE MAY COUNTY		DATE APP. BY DATE REV. DESCRIPTION	
vnh		DATE 3/10/22 BY [Signature] PROJECT # 24757			
FILE NO. N/A	DRAWN BY BMP	CHECK NO. 03-21	FIELD N/A 30104-22	PAGE N/A	
SHEET 3					



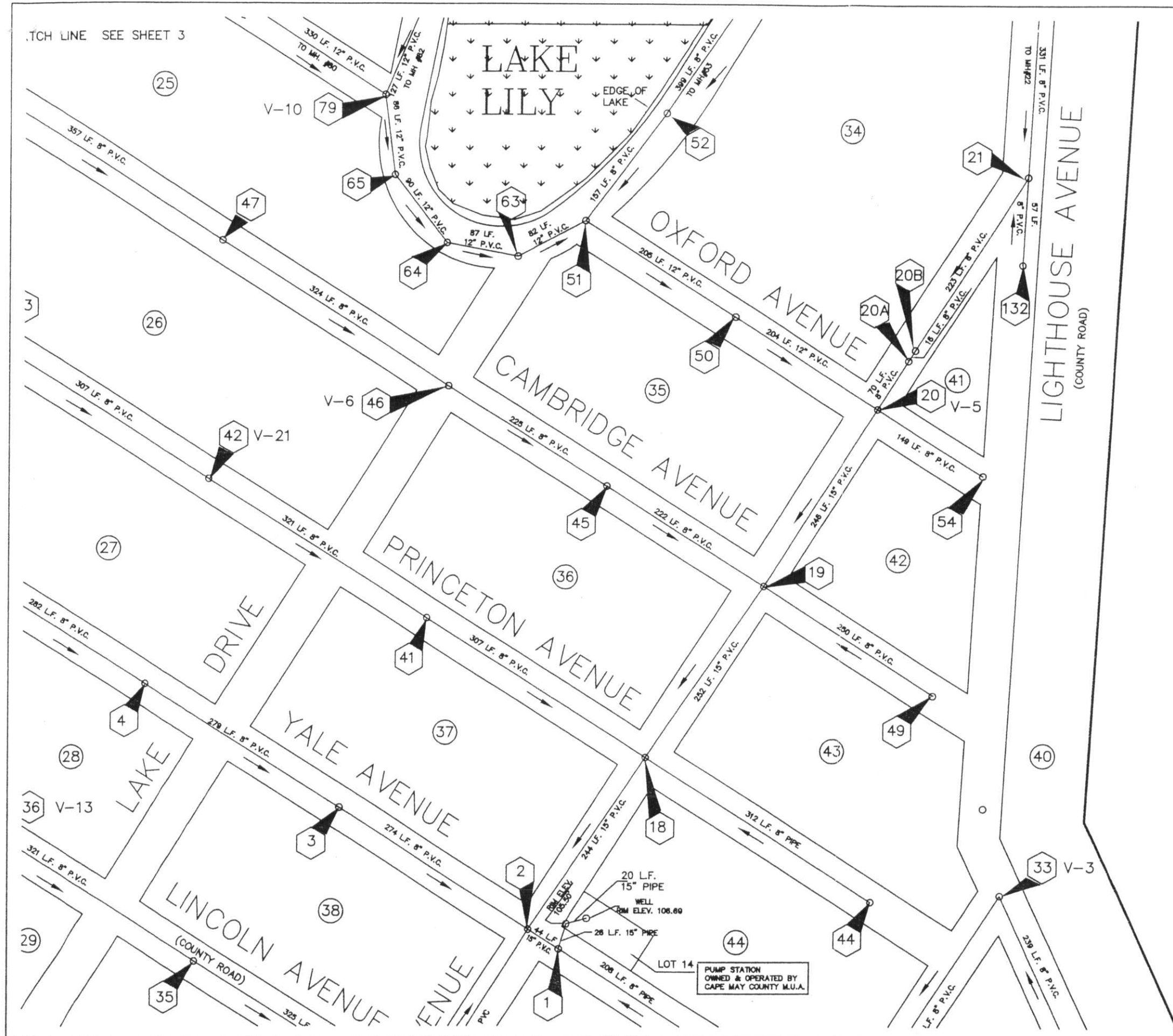
van note-harvey associates consulting engineers, planners, & land surveyors (609) 465-2600 223 North Main Street Cape May Court House, N.J. 08210 779 North Main Street Cape May, N.J. 08204 and other offices		SANITARY SEWER SYSTEM BOROUGH OF CAPE MAY POINT CAPE MAY COUNTY		DATE 3/10/87 N.T.P.E. # 24787	
FILE NO.	DRWN BY	DESCRIPTION	DATE	APP. BY	
N/A	BNP				
CHECK NO.	FIELD N/A				
03-21	BOOK				
32101-22	PAGE N/A				
SHEET 4					



# TOWNSHIP OF

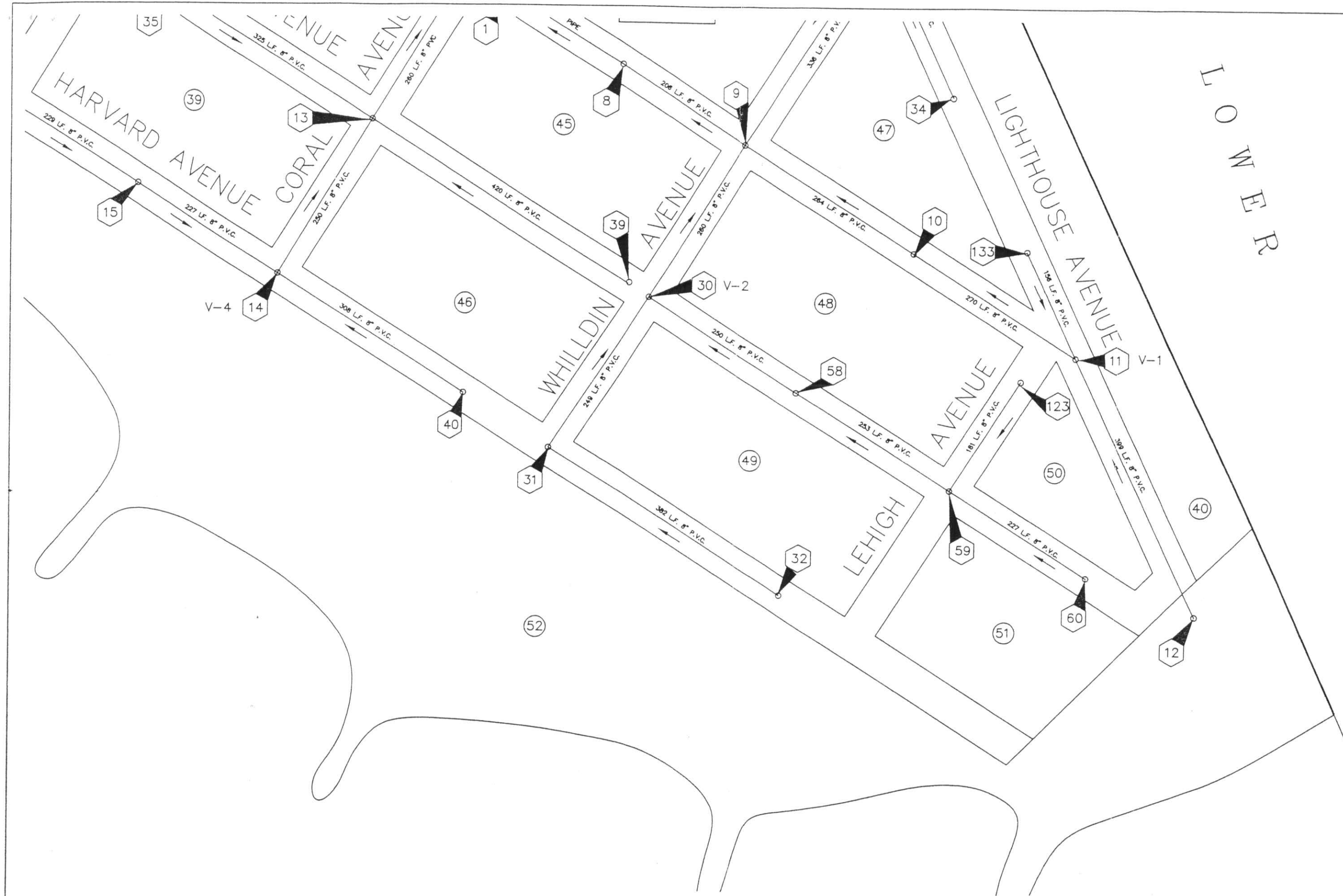
<b>van note-harvey associates</b> consulting engineers, planners, & land surveyors (609) 485-2900 223 North Main Street • Cape May Courthouse, N.J. 08210 1772 North Main Street • Cape May, N.J. 08204 and P.O. Box 100 • Seaside Heights, N.J. 08080		<b>Sanitary Sewer System</b> BOROUGH OF CAPE MAY POINT CAPE MAY COUNTY		DATE: 3/10/88 BY: [Signature] NJ PE # 24787
FILE NO. N/A	DRAWN BY BMP	ORDER NO. 03-21	FIELD N/A BOS	REV. 1 DESCRIPTION DATE BY
SHEET 5				

TCH LINE SEE SHEET 3



TO WNSHIP OF

<p>van note-harvey associates consulting engineers, planners, &amp; land surveyors 445-2500 223 North Lake Street Napier, New York, N.Y. 08210</p> <p><b>wnh</b></p> <p>ORDER NO. 03-21 32044-22</p>	<p>FILE NO. N/A</p>	<p>DRAWN BY BMP</p>	<p>FIELD N/A BOOK N/A</p>	<p>PAGE N/A</p>	<p>SHEET 6</p>
	<p>sanitary sewer system BOROUGH OF CAPE MAY POINT CAPE MAY COUNTY</p>				



<b>van note-harvey associates</b> consulting engineers, planners, & land surveyors (609) 485-2900 223 North Main Street • Cape May Courthouse, N.J. 08210 177 Atlantic Road • Haddonfield, N.J. 08033 and other offices in the United States and Canada		<b>Sanitary Sewer System</b> BOROUGH OF CAPE MAY POINT CAPE MAY COUNTY		DATE: 3/10/19 NOTE # 24787	
FILE NO. N/A	DRAWN BY BMP	REV.	DESCRIPTION	DATE	APP. BY
ORDER NO. 03-21	FIELD N/A				
32104-22	PAGE N/A				

MH#	RIM ELEV	NORTH INV	EAST INV	SOUTH INV	WEST INV	OTHER
1	105.36	90.36	95.91		90.36	
2	105.42	90.48	90.48	97.83	96.31	
3	105.89		97.43		97.43	
4	108.14		98.58		98.58	
5	108.44	99.81	99.81		101.63	
6	107.28	101.21		101.21		
7	107.38			102.62		
8	104.69		96.86		96.86	
9	104.85	98.20	99.38	97.81	97.71	
10	107.14		100.73		100.73	
11	109.03	103.88		101.75	101.75	
12	108.49	103.34				
13	105.64	98.98	99.66	98.98	99.09	
14	106.38	100.12	100.68		100.12	
15	107.29		101.18		101.18	
16	107.62	102.26	102.26			
17	107.31			103.30		
18	105.23	90.88	99.60	90.88	98.55	
19	105.28	91.41	99.38	91.41	95.64	
20	105.57		99.98	91.78	98.43	
20A	104.46	92.92		92.92		
20B	105.34	93.17		93.17		
21	107.09	94.10		102.39		SW 94.10
22	107.80	95.45		95.45		
23	109.38	96.94		96.94		
24	108.77	98.18		98.18		
25	109.00	99.50		99.50		
26	110.05	103.02		103.02		
27	111.06	104.31		104.31		
28	109.44		105.85			
29	108.59		103.65			
30	105.09	98.79	99.33	98.79		
31	106.38	99.82	100.28			
32	106.59				101.79	
33	105.19			99.72		SE 99.72
34	106.06					NW 101.55
35	107.21		100.38		100.38	
36	109.35	102.52	101.83		101.83	
37	108.41		102.51	102.51	102.51	
38	109.50		104.77			
39	105.30				101.39	
40	106.28				101.97	
41	105.58		99.82		99.82	
42	106.32		101.26		101.26	
43	107.79		103.14			
44	105.25				100.83	
45	105.49		98.26		98.26	
46	105.58		100.31		100.31	
47	107.58		102.21		102.46	
48	107.81		103.93			
49	105.24				100.95	
50	106.20		99.00		99.00	
51	105.68	100.76	99.49		99.49	
52	106.67	101.82		99.49	101.82	
53	107.83	103.57		103.57		
54	105.56				100.75	
55	108.42	101.42				
56	105.86	101.52		101.52		
57	105.31			102.11		
58	106.40		100.58		100.58	
59	108.12	102.12	102.72		101.76	
60	107.68				103.53	
61	108.11			103.55		
62	108.70	104.49				
63	105.38	99.67			99.67	
64	105.85		99.90			NW 99.90
65	105.99	100.14				SE 100.14

MH#	RIM ELEV	NORTH INV	EAST INV	SOUTH INV	WEST INV	OTHER
66	110.66	97.15	91.46	91.46	93.94	
67	107.89		93.65		93.65	
68	107.28	95.12			95.12	
69	105.83	95.96		95.96	101.18	
70	105.79	96.09		96.09		
71	105.38	97.37		97.37	101.21	
72	106.60	98.21		98.21		
73	107.87	99.32		99.32		
74	107.08	100.57		100.57		
75	106.51			101.98	101.98	
76	107.27	102.91	102.91			
77	107.54		103.50	103.50		
78	108.21				104.00	
79	106.40	101.05		100.49	100.49	
80	108.15		101.55		101.55	
81	110.50		102.17			
82	106.63	101.82		101.82		
83	107.19			102.97		
84	108.88		105.20			
85	110.06		106.18			
86	108.39	94.85		100.25	99.24	
87	109.13	101.74		101.74		
88	109.49	103.17		103.17		NW 103.30
89	109.35	104.29				
90	109.03		100.73		100.73	
91	109.61	102.29	102.29	102.29		
92	107.93	104.01				
93	108.26	95.85		95.85	101.25	
94	108.18	96.97		96.97	98.92	
95	108.49	100.35		98.22	98.22	
96	107.97		102.12	102.12	101.68	
97	108.89		103.71		103.71	
98	110.48				105.41	
99	108.48					SE 104.81
100	107.99	98.15		98.15		
101	108.35	99.84		99.84	101.91	
102	109.20	100.93		100.93	102.14	
103	110.29	102.17		102.17		
104	107.75			103.51		
105	109.63		102.92		102.92	
106	111.11	104.44	104.44	104.44	104.44	
107	109.56		105.73			
108	109.44		100.19		100.19	
109	111.04		101.84		101.84	
110	108.66	103.09	103.09			
111	108.13			104.32		
112	108.43		99.41		99.41	
113	109.56	101.06	101.06	103.19	102.15	
114	108.11		103.50			
115	107.07		102.45		102.45	
116	111.80		106.43			
117	108.21		103.95			
118	109.50		104.67			
119	108.53		104.44	104.04	102.41	
120	111.80				107.34	
121	108.15		103.84			
122	106.50		102.54			NOT BUILD
123	108.30			103.51		
124	110.24	104.23				
125	111.46			105.62		
126	110.85	105.01				
127	110.52			103.42		
128	111.13			104.97		
129	109.41	102.04		100.12	100.12	
130	105.49	100.80	100.80	100.80		
131	108.70		104.93			
132	107.01	102.78				
133	107.86			104.69		

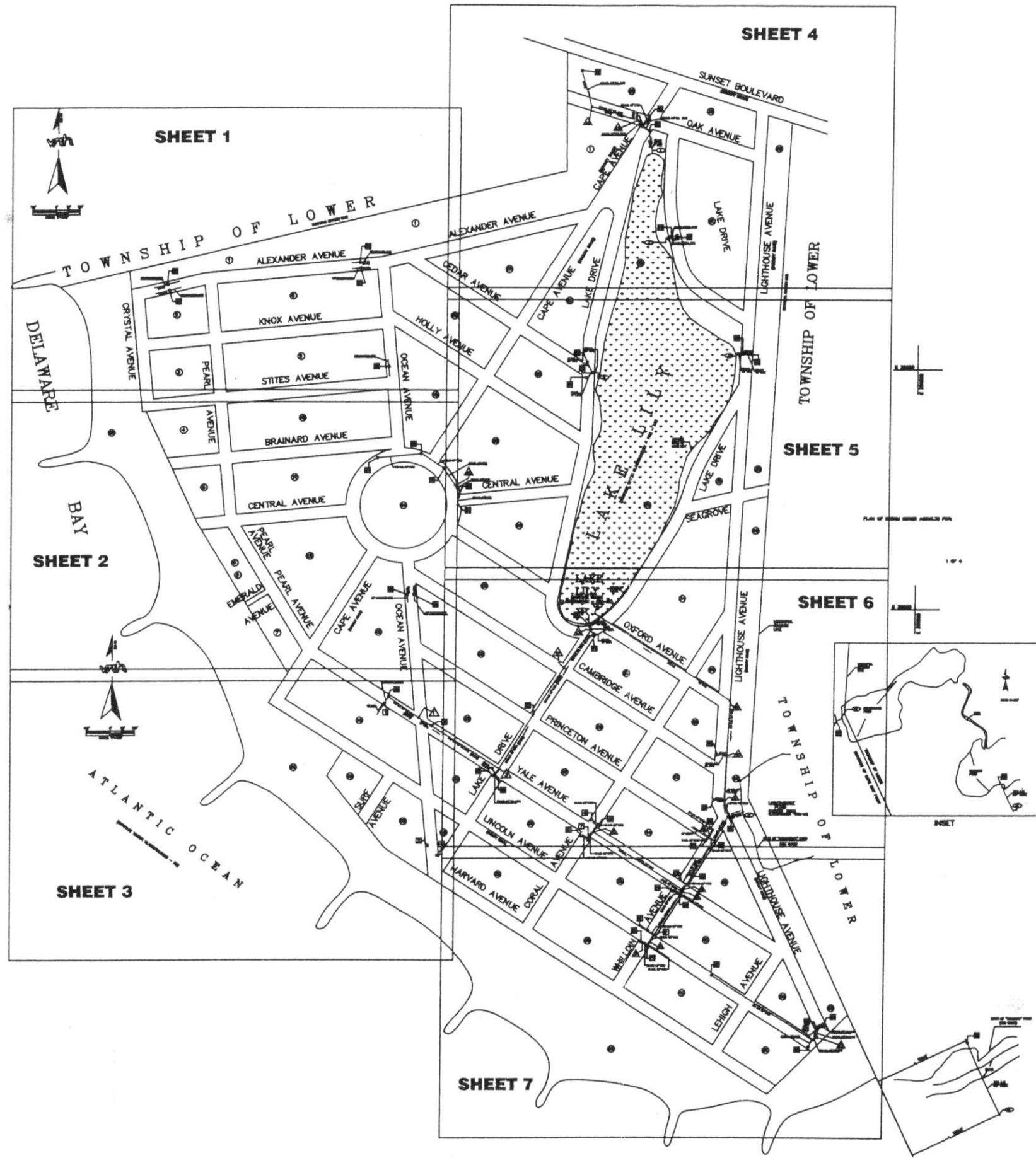
- 

FILE NO. N/A	DRAWN BY BMP
ORDER NO. 03-27 32101-22	DATE N/A PAGE N/A
SHEET 8	

van note-harvey associates  
consulting engineers, planners, & land surveyors  
(800) 465-2600  
223 North Main Street • Cape May Courthouse, N.J. 08210  
Freehold, N.J. 08068  
Fax: 732/221-0001  
www.vanharvey.com

SANITARY SEWER SYSTEM  
TABLE & LEGEND  
BOROUGH OF CAPE MAY POINT  
CAPE MAY COUNTY

*[Signature]* DATE *3/10/19*  
NYPE # 24787



SEE  
SHEET 8  
FOR INSET  
(STORM  
SEWER ONLY)

SEE  
SHEET 8  
FOR INSET  
(STORM  
SEWER ONLY)

van note-harvey associates consulting engineers, planners, & land surveyors (609) 465-2500 223 North 14th Street Cape May Court House, N.J. 08210 171 East 1st Street Cape May, N.J. 08204 100 West 1st Street Cape May, N.J. 08204		INDEX OF SHEETS BOROUGH OF CAPE MAY POINT CAPE MAY COUNTY		REV. DESCRIPTION DATE / APP. BY	
FILE NO.	N/A	DRAWN BY	EMP.	DATE	BY
ORDER NO.	03-21	FIELD NO.	N/A	DATE	BY
35104-22		PAGE	N/A		
KEY SHEET					



MUNICIPAL DIVISION LINE

DELL'ANAR

CRYSTAL AVENUE

PEARL

KNOX AVENUE

STITES AVENUE

OCEAN AVE

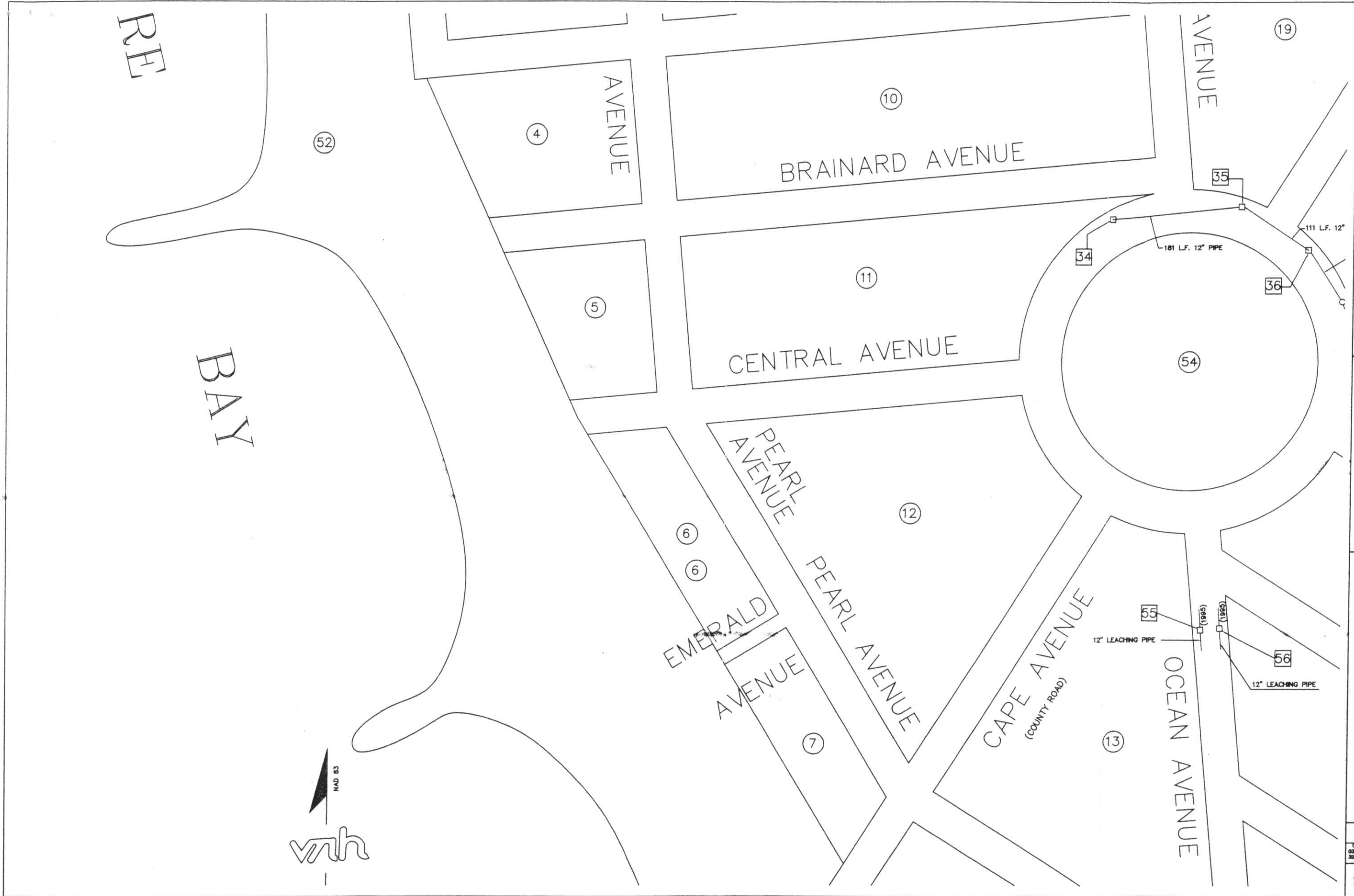
HOLLY AVE

STORM SEWER SYSTEM  
BOROUGH OF CAPE MAY POINT  
CAPE MAY COUNTY

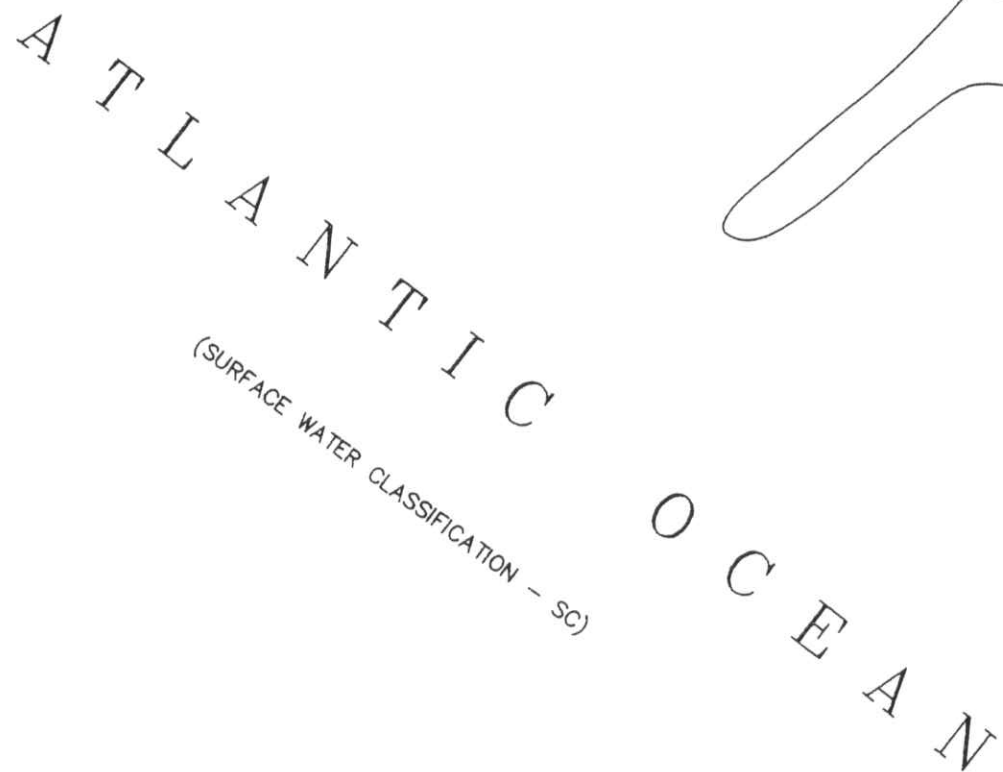
**van note-harvey associates**  
consulting engineers, planners, & land surveyors  
**vnh**  
(609) 465-2600  
223 North Ninth Street • Cape May Court House, N.J. 08210  
• 779 North 1st Avenue • Cape May, N.J. 08204  
• 1000 West 1st Avenue • Atlantic City, N.J. 08401  
• 2000 Highway 101, Box 101 • Wildwood Ridge, N.J. 08095


FILE NO. N/A	DRAWN BY BMP
ORDER NO. 03-21 32104-22	FIELD N/A BOOK PAGE N/A

SHEET 1

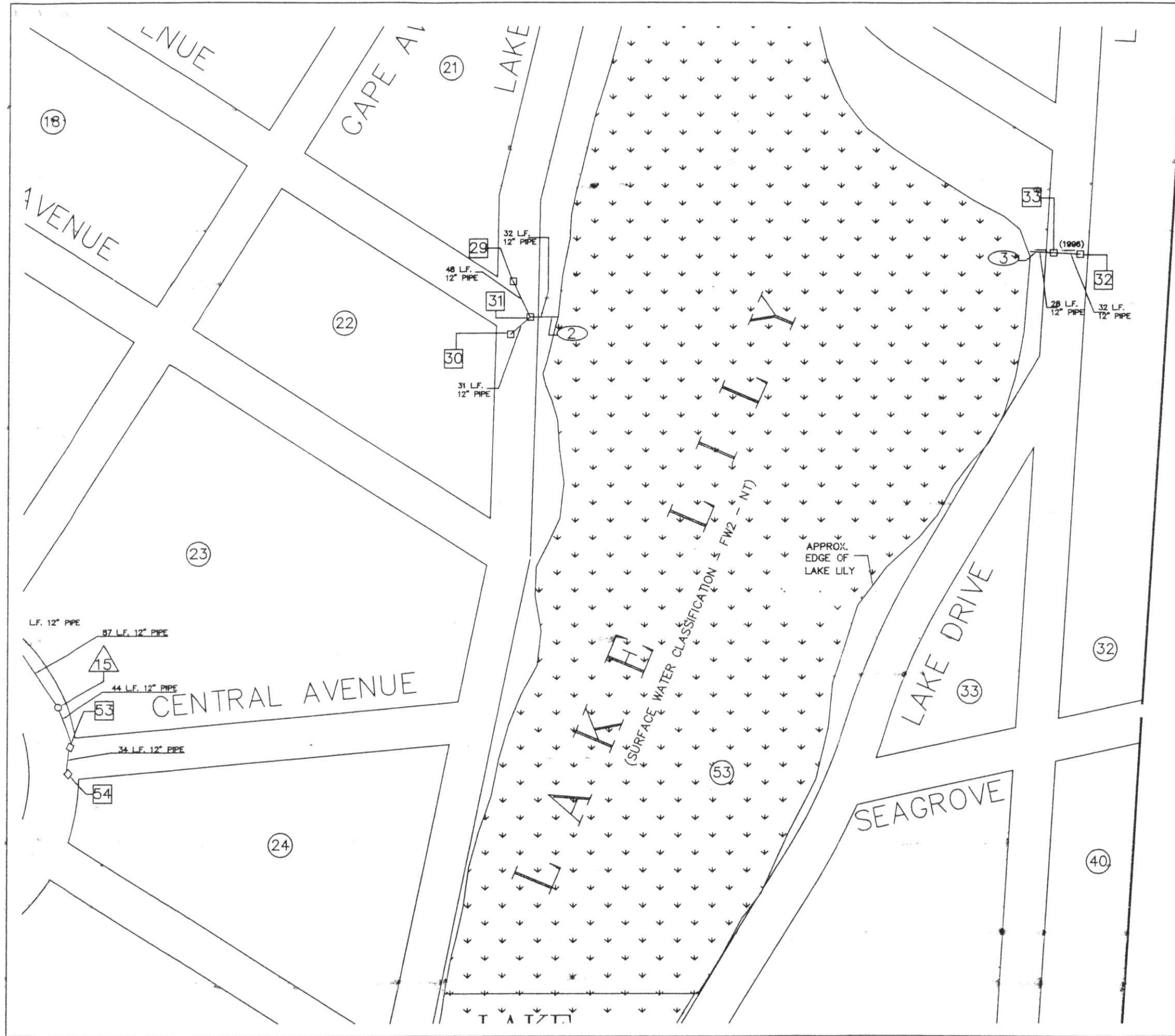


van note-harvey associates consulting engineers, planners, & land surveyors (508) 465-2800 233 New Bedford Street New Bedford, MA 01905 Fax: (508) 465-2801 E-mail: info@vnh.com		STORM SEWER SYSTEM BOROUGH OF CAPE MAY POINT CAPE MAY COUNTY		DATE: 3/19/99 BY: [Signature] WDE #24767
FILE NO. N/A	DRAWN BY BMP	ORDER NO. 03-21 32104-22	FIELD N/A BOOK PAGE N/A	REV.
SHEET 2		DESCRIPTION		
DATE		APP. BY		

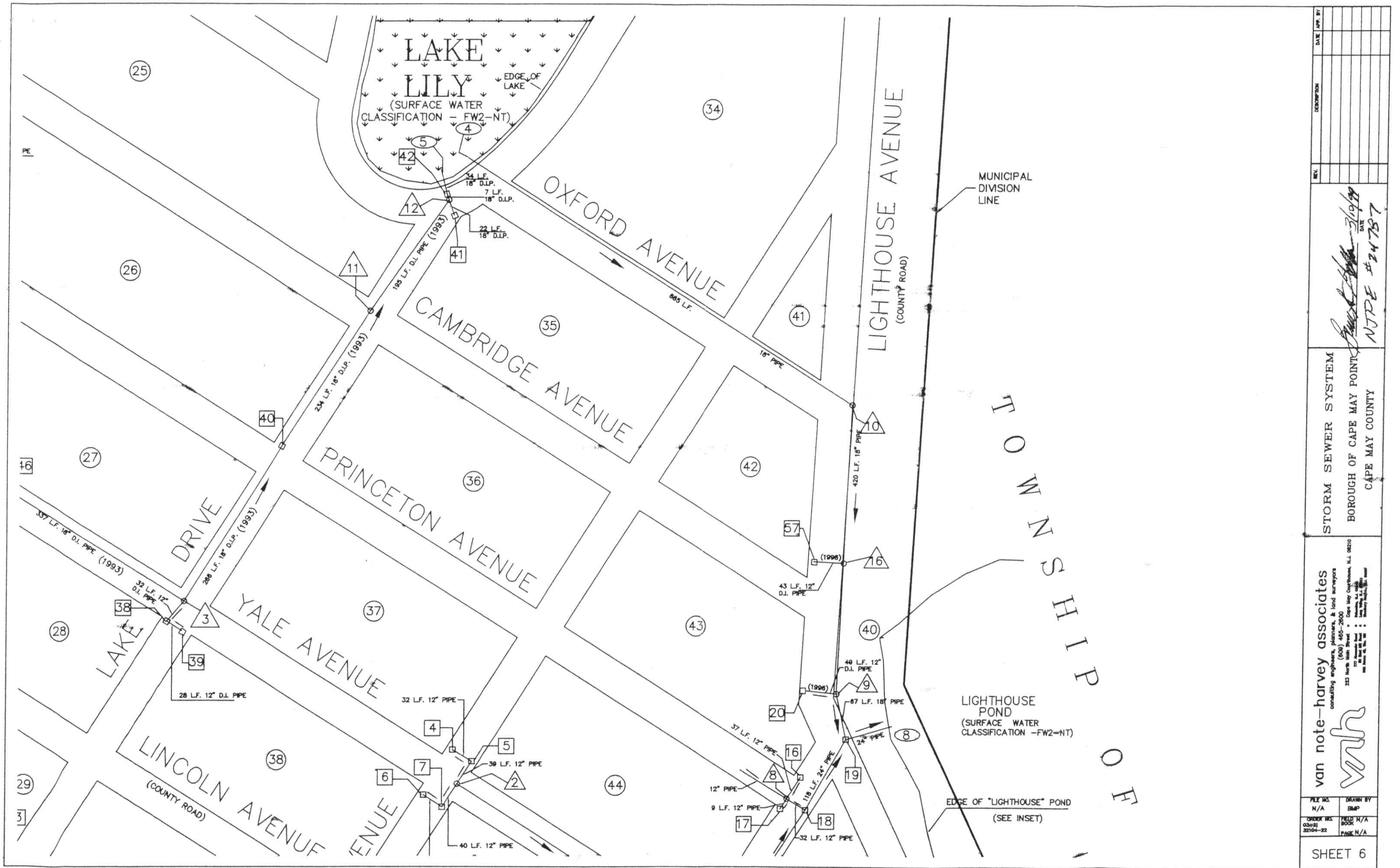


van note-harvey associates consulting engineers, planners, & land surveyors (609) 485-2600 323 North 10th Street • Dept. May Courthouse, N.J. 08210  777 Alexander Road • Princeton, N.J. 08540 609 952-8800 • Long Valley, N.J. 08540 609 952-8800 • Salisbury Heights, N.J. 08059	FILE NO. N/A	DRAWN BY BMP
	ORDER NO. 03-21 32104-22	FIELD BOOK N/A PAGE N/A
SHEET 3		





<b>van note-harvey associates</b> consulting engineers, planners, & land surveyors (609) 465-2600 233 North Main Street • Cape May Courthouse, N.J. 08210 777 Atlantic Road • Hammonton, N.J. 08037 fax: 609-465-2600 • e-mail: info@vanharvey.com		<b>STORM SEWER SYSTEM</b> BOROUGH OF CAPE MAY POINT CAPE MAY COUNTY		DATE: 3/19/88 DATE: 11/24/87	
FILE NO.	DRAWN BY	REVISION	DATE	BY	DATE
N/A	BNP				
ORDER NO.	FIELD N/A				
03-21	BOOK				
32104-22	PAGE N/A				
SHEET 5					



STORM SEWER SYSTEM  
BOROUGH OF CAPE MAY POINT  
CAPE MAY COUNTY

van note-harvey associates  
consulting engineers, planners, & land surveyors  
(609) 465-2600  
223 North Main Street • Cape May Courthouse, N.J. 08210  
177 Atlantic Road • Atlantic City, N.J. 08401  
and 1000 N. 1st St. • Philadelphia, Pa. 19106

FILE NO. N/A	DRAWN BY BLP
ORDER NO. 030221	FIELD N/A
DATE 02/14/22	PAGE N/A



**van note-harvey associates**  
 consulting engineers, planners, & land surveyors  
 (609) 465-2800  
 223 North 10th Street • Cape May Courthouse, N.J. 08210  
 777 North 10th Street • Cape May Courthouse, N.J. 08210  
 1000 North 10th Street • Cape May Courthouse, N.J. 08210

**STORM SEWER SYSTEM**  
 BOROUGH OF CAPE MAY POINT  
 CAPE MAY COUNTY

FILE NO.  
N/A

ORDER NO.  
03-21  
32104-22

DRAWN BY  
EMP

FIELD N/A  
BOOK

PAGE N/A

SHEET 7

DATE APP. BY

DESCRIPTION





REV.

DATE 3/14/87  
 BY [Signature]  
 NOTE #24787



□

## LEGEND

-  26 STORM SEWER INLET #  
 2 STORM SEWER OUTFALL #  
 2 STORM MANHOLE #  
 54 TAX MAP BLOCK NUMBER

(8") P.V.C. (SIZE) TYPE OF PIPE IF KNOWN  
(1994) YEAR CONSTRUCTED (IF KNOWN)

100 L.F.      100 LINEAR FEET

 DIRECTION OF FLOW

[illegible]

*Benny L. Smith* DATE *3/10/98*

STORM SEWER SYSTEM  
TABLE & LEGEND  
BOROUGH OF CAPE MAY POINT  
CAPE MAY COUNTY

**van note—harvey associates**  
consulting engineers, planners, & land surveyors  
(508) 465-2600  
223 North Main Street • Cape May Courthouse, N.J. 08210

**vanh**

777 Alexander Road • Princeton, N.J. 08540  
1000 West 12th Street • Tulsa, Oklahoma 74106  
1000 West 12th Street • Tulsa, Oklahoma 74106  
and • Tulsa, Oklahoma 74106

FILE NO. 21/A	DRAWN BMP
ORDER NO. 03-21 32101-22	FIELD N./ BOOK PAGE N/A