

# POLICY MAP

## of the

### New Jersey State Development and Redevelopment Plan

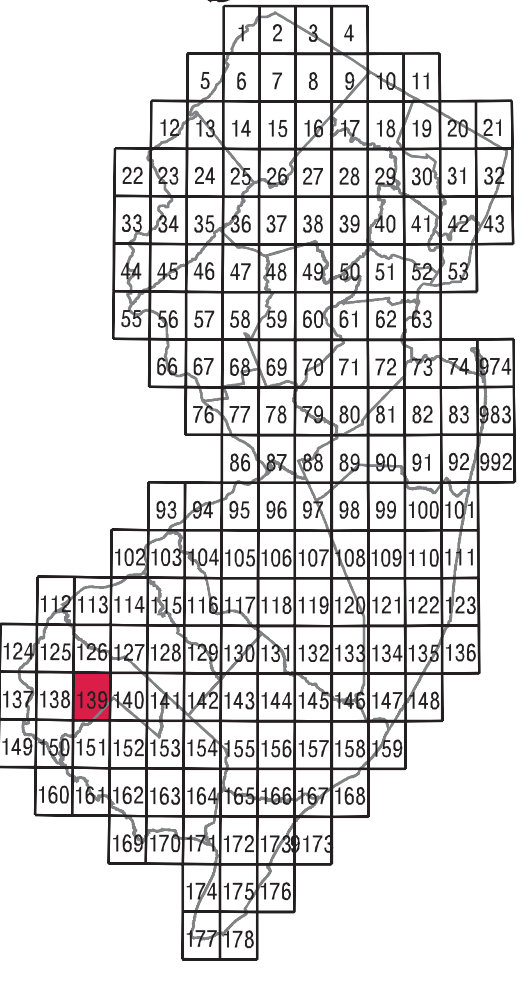
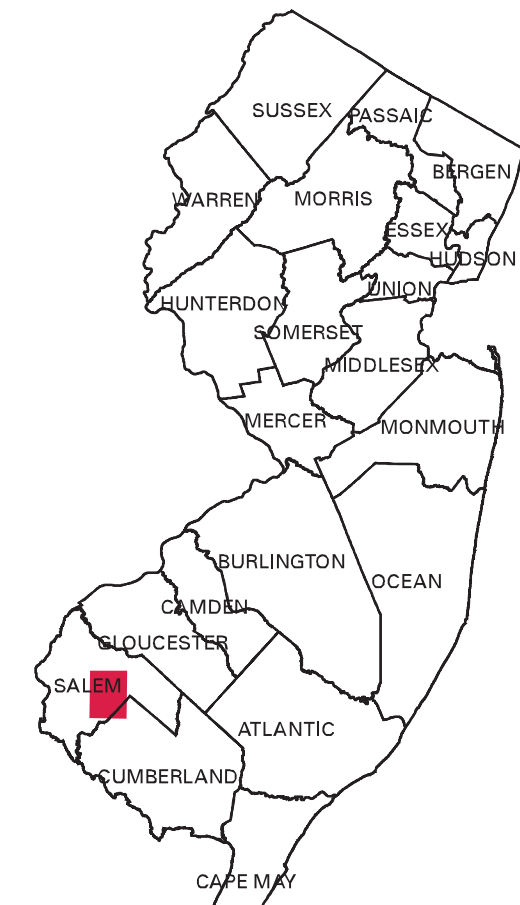
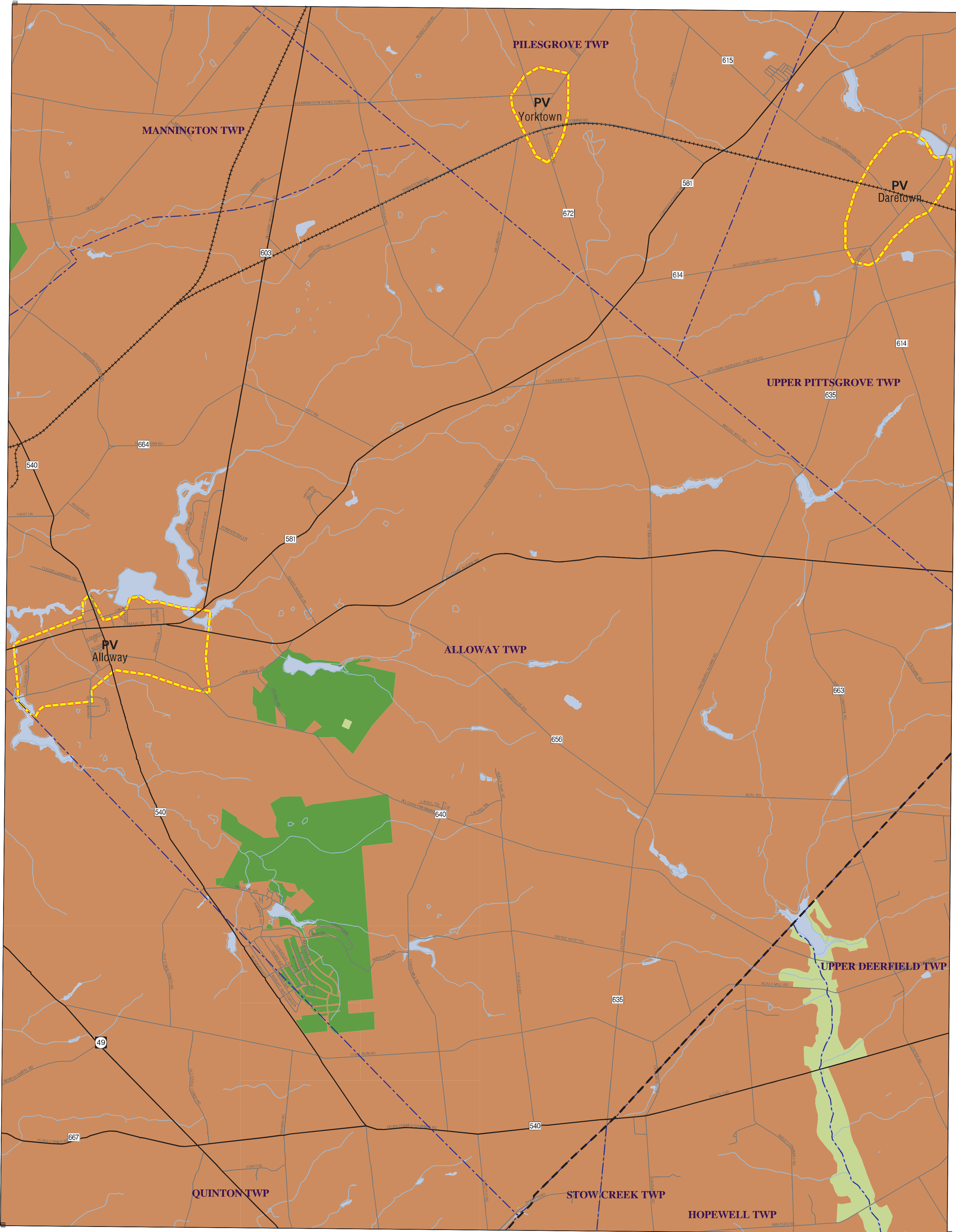
The State Plan is not itself a regulation but a statement of State policy that has been adopted by the State Planning Commission pursuant to statute to guide State, regional and local agencies in the exercise of their statutory authority.

# NEW JERSEY

## STATE PLANNING COMMISSION

### January 7, 2008

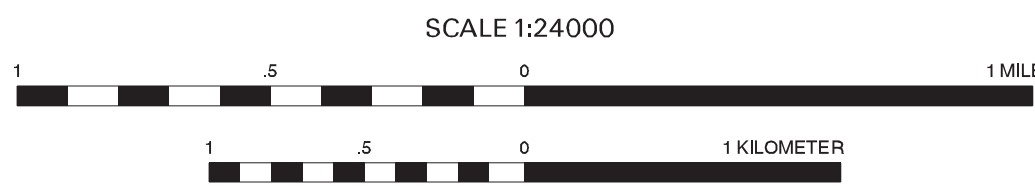
Map prepared by the New Jersey Office of Smart Growth. Map was developed in part using digital data from the New Jersey Department of Environmental Protection, New Jersey Department of Transportation and the New Jersey Pinelands Commission. New Jersey State Plane Coordinate System. North American Datum 1983 (NAD83). □ Denotes NAD27.



- |   |   |   |   |   |
|---|---|---|---|---|
| <ul style="list-style-type: none"> <li> Urban Complex</li> <li> Metropolitan Planning Area</li> <li> Suburban Planning Area</li> <li> Fringe Planning Area</li> <li> Rural Planning Area</li> <li> Rural/Env.Sensitive Planning Area</li> <li> Env. Sensitive Planning Area</li> <li> Env. Sens./Barrier Is. Planning Area</li> </ul> | <ul style="list-style-type: none"> <li> Parks &amp; Natural Areas</li> <li> Military Installations</li> <li> Hackensack Meadowlands</li> <li> Water</li> <li> Critical Environmental Site</li> <li> Historic &amp; Cultural Site</li> <li> Node</li> <li> Core</li> </ul> | <ul style="list-style-type: none"> <li> Endorsed Plan</li> <li> Center</li> <li> Municipal Boundary</li> <li> County Boundary</li> <li> CAFRA Boundary</li> <li> Interstate &amp; Toll Roads</li> <li> US &amp; State Roads</li> <li> Rail Lines &amp; Commuter Stations</li> </ul> | <ul style="list-style-type: none"> <li> U C - Urban Center</li> <li> D R - Designated Regional Center</li> <li> P R - Proposed Regional Center</li> <li> I R - Identified Regional Center</li> <li> D T - Designated Town</li> <li> P T - Proposed Town</li> <li> I T - Identified Town</li> <li> D V - Designated Village</li> <li> P V - Proposed Village</li> <li> I V - Identified Village</li> <li> D H - Designated Hamlet</li> <li> P H - Proposed Hamlet</li> <li> I H - Identified Hamlet</li> </ul> | <ul style="list-style-type: none"> <li> State Designated Pinelands Area- (12-00)</li> <li> Pinelands Regional Growth Area</li> <li> Pinelands Town</li> <li> Pinelands Village</li> <li> Pinelands Rural Development Area</li> <li> Pinelands Agricultural Production Area</li> <li> Pinelands Special Agricultural Area</li> <li> Pinelands Forest &amp; Preservation Area</li> <li> Pinelands Military &amp; Federal</li> </ul> |
|---|---|---|---|---|

I certify that this quadrangle of the State Plan Policy Map was adopted and approved by the New Jersey State Planning Commission on March 1, 2001.

Benjamin L. Spinelli, Secretary



ALLOWAY, NJ