

Patriots Theater at the War Memorial

Technical Data

Stage House Dimensions

Proscenium Opening:	50'-0" wide x 25'-0" high
Batten Travel:	48'-10"
Batten Length:	60'-0"
Stage depth:	26' smoke pocket to back wall
Pit depth at centerline:	12'-6"
Smoke pocket to edge of pit:	4'-6"
Center line to off stage left:	36'-0"
Center line to off stage right:	43'-0"
Orchestra pit in up position:	48'-0" wide x 12'-0" deep
Orchestra pit in travel:	15'-0" deep

House curtain operates S.R. (Guillotine)

Pin rail stage right

Legs & full stage blacks: 24'-0"

Loading

Raised loading dock for two 48'-0" trucks with levelers

Interior freight elevator at dock level, capacity: 10,000 lbs.

Cab size: 6' wide x 12' long x 7' high

Exterior Gala Scenic lift at dock level, capacity: 14,000 lbs. Lift size: 6' wide x 12' long

Stage level loading door at top of scenic lift: 6'-0" wide x 10'-0" high

Electrics

Power: (2) 400 amp 120/208 volts AC with female cam locks upstage left

(1) 200 amp 120/208 volts AC mid stage left with female cam locks

Outside truck tie-in 200 amp 120/208 volts AC in basement with mouse hole to outside with female cam locks

George Washington Ballroom stage left 200 amp 120/208 volts AC with female cam locks

Delaware River Room 60 amp 120/208 volts AC with female cam locks

Follow spot booth 200 amp 120/208 volts AC with female cam locks

Dimmers

278 2.4 KW
4 6.0 KW

Control

ETC ION with focus remote and remote video monitors (See attached Rep Plot)

FOH Positions No. of circuits distance @ center line to smoke pocket

Far cove	24	78'-0"
Near cove	24	54'-0"
Balcony rail	12	60'-0"
L & R Box booms	12 each side	57'-0"
1 Electric	24	
2 Electric	18	
3 Electric	18	

*** Due to fire regulations, fog or haze cannot be used without management approval**

Lighting Instrument Inventory

*Note: Instrument inventory and light plot subject to change.
Please talk to Operations Manager for current information

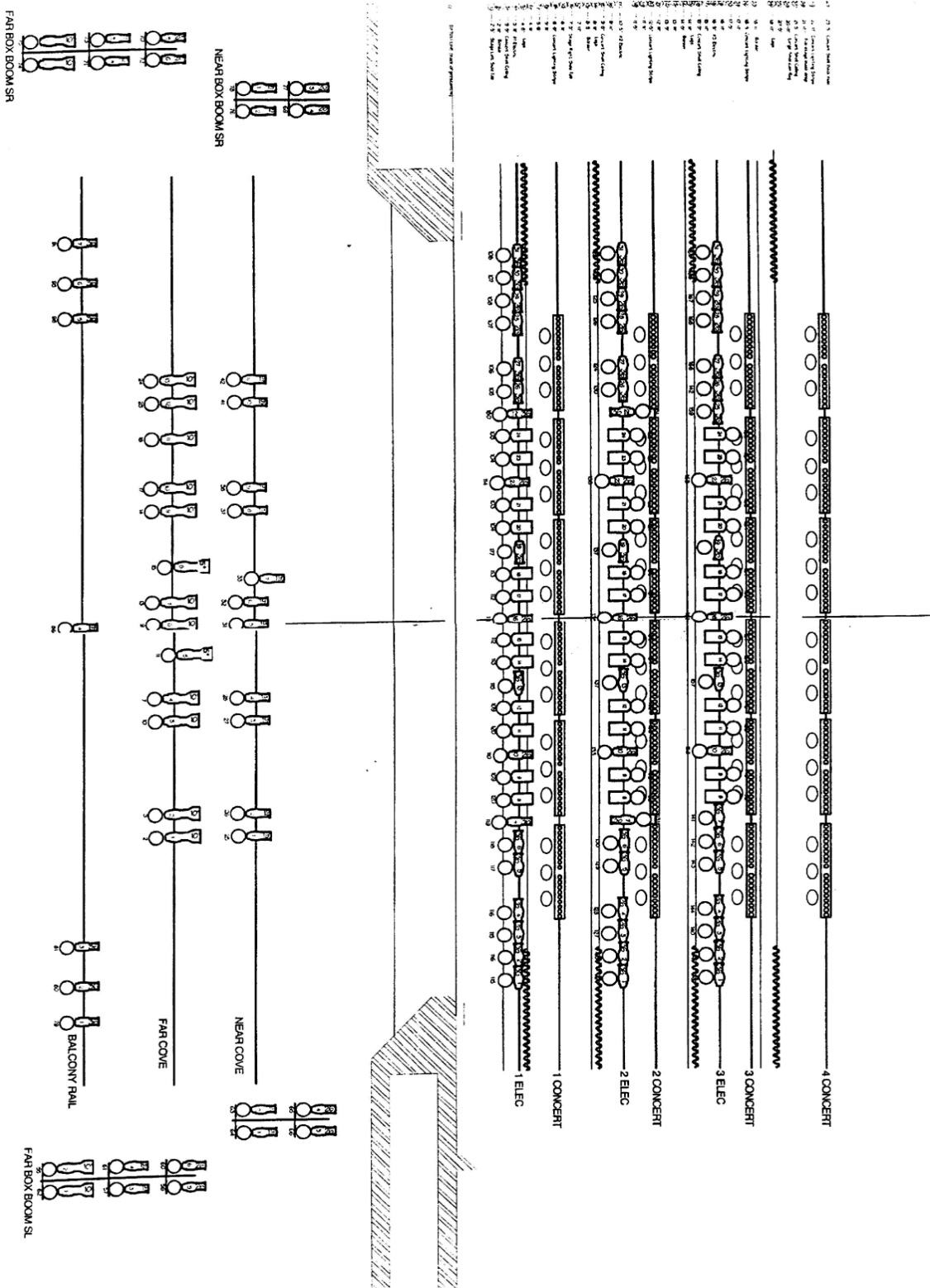
Number:	Type	Lamp
2	ETC 5° Source-Four	HPL 575 watt
15	ETC 10° Source-Four	HPL 575 watt
30	ETC 19° Source-Four	HPL 575 watt
35	ETC 26° Source-Four	HPL 575 watt
60	ETC 36° Source-Four	HPL 575 watt
40	PAR 64	40: FFR (medium flood)
		20: FFS (wide flood)
6	6-cell cyc. Ground row	FDN 500 watt
25	3-circuit mini-strips	EYC 75 watt/12 volt MR-16
12	3-circuit PAR 56 Strips/8 ft.	PAR 56 medium floods
2	Strong Super Trouper	2K Xenon

Accessories

Number:	Type
8	21 ft. booms
50	18" side-arms

Light Plot

*Note: Instrument inventory and light plot subject to change.
Please talk to Operations Manager for current information



Sound

House Console: Yamaha CL5

House Mix Positions: Back of house orchestra seating level house right of center
Visiting back of house, behind house mix position

Monitor Console: Midas M32

Monitor Mix Position: House stage right, Visiting either stage left or stage right

Speakers:

Stereo Fills: Left & Right: 4- EAW KF-850 per side 2 up & 2 down

Center Cluster: Loge: 2 EAW KF-650

Orchestra: 3 EAW KF-300

Balcony: Over Balcony: 3 EAW JF-260

Rear Balcony: 6 EAW JF-80

Under Balcony: 3 EAW UB-42

Stage Lip: Front Fills: 6 EAW JF-80

On Stage: Monitors: 12 EAW SM 15

3 EAW SM 200 IH

Side Fills 2 EAW KF-650: 1 per side

2 EAW SB-250: 1 per side

Play Back/Record: 2 - TASCAM CD-401

1 - TASCAM DAT-DA 30

2 - TASCAM Cassette-112

1 - TASCAM CDRW-700

)
Processing: *House:* dbx Driverack 480 with remote control

Monitor: dbx Driverack (sidefills), QSC (monitor wedges)

Amplification: *House:* QSC & Crest

Monitor: QSC

Microphones: Shure, Neuman, AKG, EV, BSS, Whirlwind, Crown, Sennheiser, etc..

Shure U1 Wireless: Beta 87 handheld or WL183 lavalier (6 channels total)

A complete list is available upon request.

Intercom: Clear Com 4 channel with 8 belt packs & single muff headsets

Telex Wireless 2 channel with 4 belt packs & single muff headsets (compatible with channels A & B of Clear Com)

Paging: Dressing Room page from stage right

Infra red hearing impaired system with 120 headsets

Concert Shell

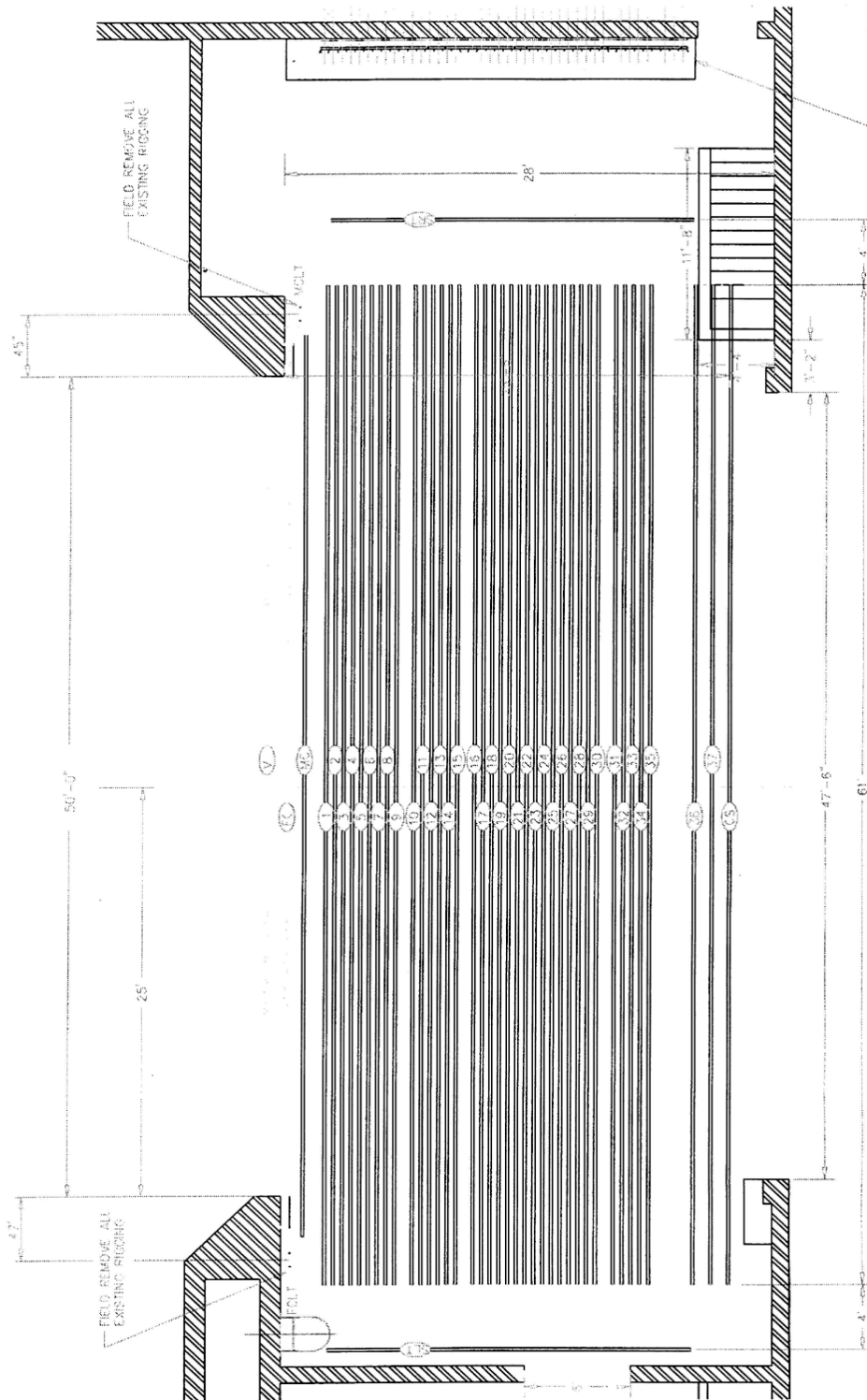
Full stage coverage

4 towers with doors onstage

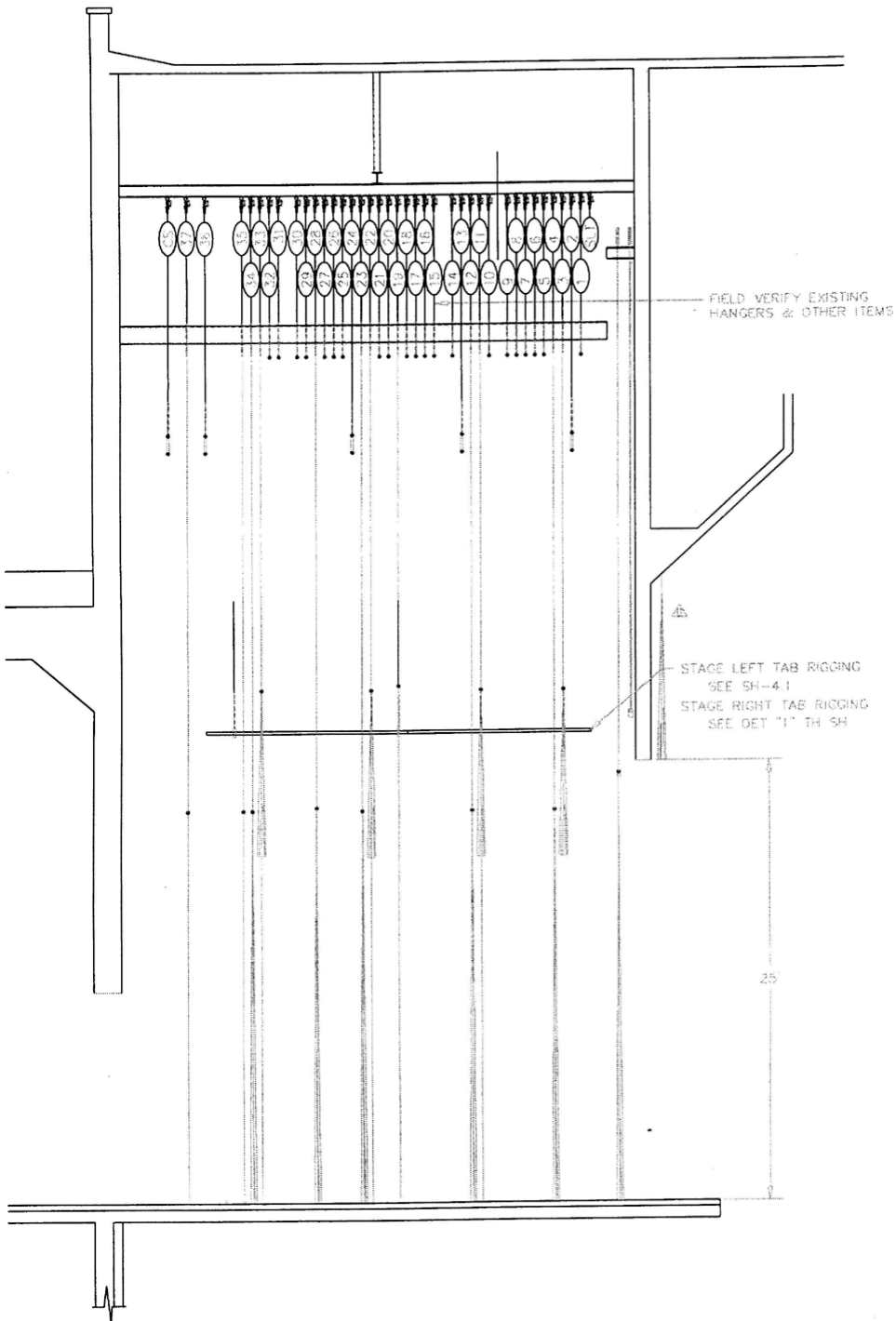
4 ceiling panels

Full stage with no color down lighting

Hanging Plot (Top-View)



Hanging Plot (Section)



A SECTION THRU STAGE HOUSE
-4-

LINE SET SCHEDULE (11/04)

*Note: Line Set Schedule subject to change.
Please talk to Operations Manager for current information

40A	23'-11"	Cyclorama (Hemp Set)
40	23'-5"	Concert Shell Back Wall
39	22'-11"	Concert Lighting Strip
38A	22'-5"	(Hemp Set)
38	21'-11"	
37	21'-5"	Concert Shell Ceiling
36	20'-11"	
35	20'-5"	
34	19'-11"	Legs
33	18'-11"	Border
32	18'-5"	Concert Lighting Strips
31	17'-11"	
30	17'-5"	
29	16'-11"	
28	16'-5"	#3 Electric
27	15'-11"	
26	15'-5"	Concert Shell Ceiling
25	14'-11"	Legs
24	14'-5"	Border
23	13'-11"	
22	13'-5"	
21	12'-11"	
20	12'-5"	Concert Lighting Strips
19	11'-11"	
18	11'-5"	
17	10'-5"	#2 Electric
16	9'-11"	
15	9'-5"	Concert Shell Ceiling
14	8'-11"	
13	8'-5"	Legs
12	7'-11"	Border
11	7'-5"	Stage Right Side Tab
10	6'-11"	
9	6'-5"	Concert Lighting Strips
8	5'-11"	
7	5'-5"	
6	4'-11"	
5	4'-5"	Legs
4	3'-11"	#1 Electric
3	3'-5"	Concert Shell Ceiling
2A	3'-2"	Legs (spotted)
2	2'-11"	Border
1	2'-5"	Stage Left Side Tab
0		DATUM LINE (back of proscenium)

Notes: All Legs, border and electrics may be moved if required (and must be restored after the event). All concert shell-ceiling panels and the concert shell back wall cannot be moved. Concert electric strips may be used but if anything is required to be moved, it all must be restored.

Wardrobe

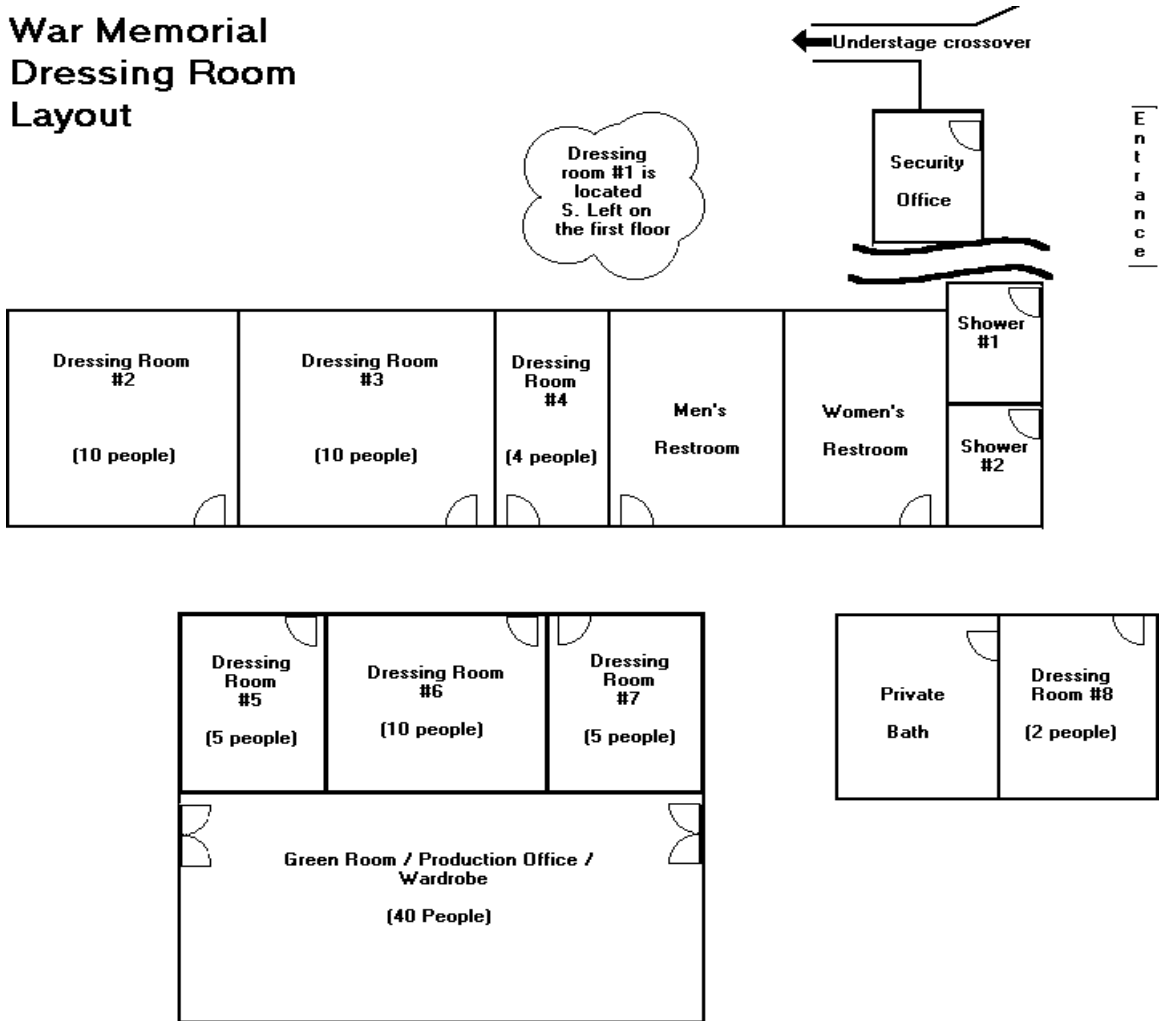
- 1-25' x 38' room basement level adjacent to dressing rooms
- 2 washers and 2 dryers coin operated basement level
- 1 Clothing steamer
- 1- Iron and Ironing board
- 6- Wardrobe Hanging Racks

Dressing Rooms

Stage Level: #1-3 mirror spaces with private restroom

Basement Level: #2-10 mirror spaces w/ sink #6-10 mirror spaces w/ sink
#3-10 mirror spaces w/ sink #7-5 mirror spaces w/ sink
#4-4 mirror spaces w/ sink #8-2 mirror spaces w/ private
#5-5 mirror spaces w/ sink restroom
2 common restrooms
2 single showers

War Memorial Dressing Room Layout



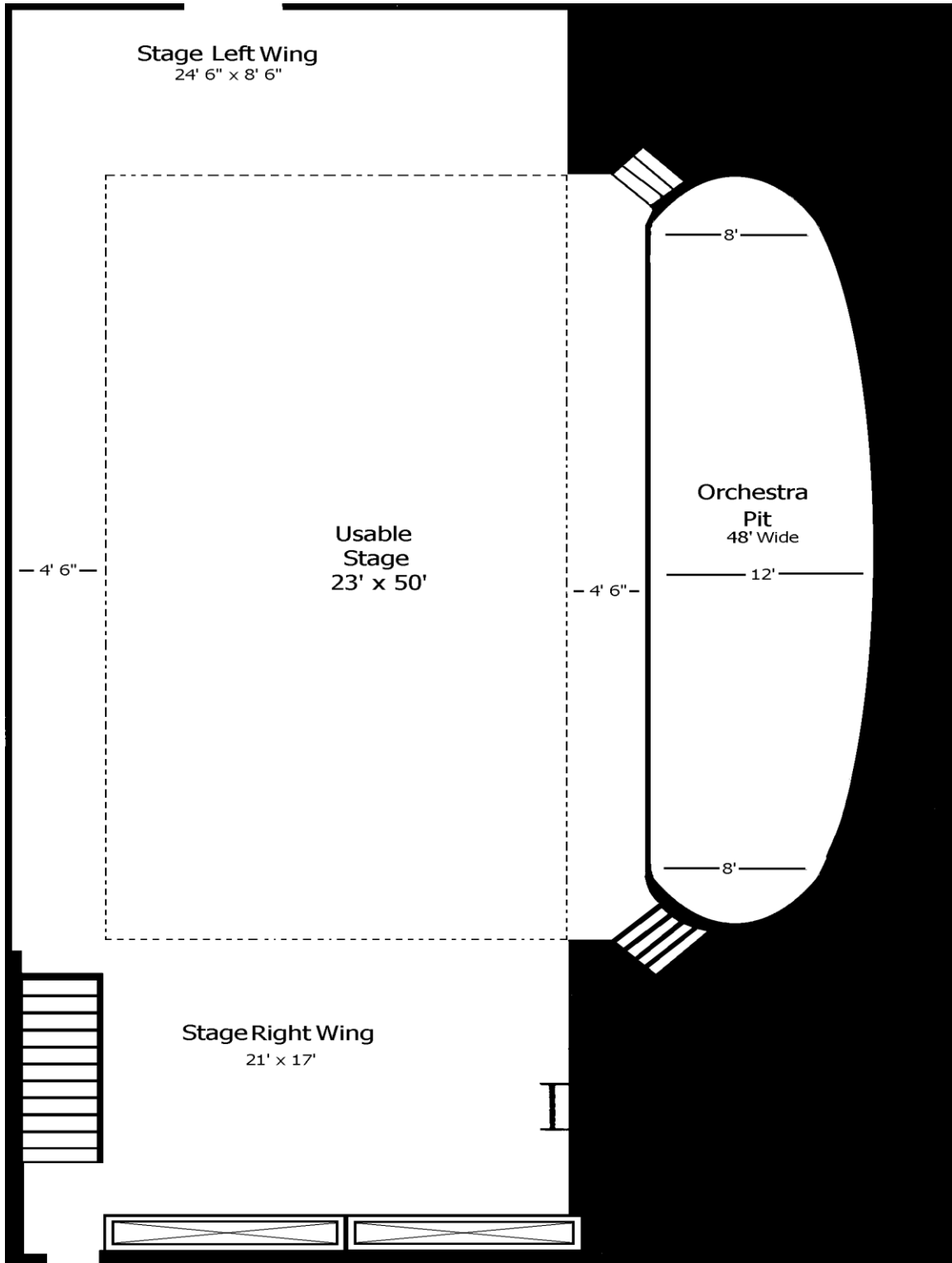
Company and Stage Management

A separate office is available on request.

Contact phone numbers at the War Memorial

Operations Manager	Bill Nutter 609-943-9921 609-777-1872
Dressing Room 1	609-984-9267
Backstage:	609-984-9577
Administrative Office:	609-984-8484
Administrative Fax:	609-292-7636
Box Office:	609-984-8400
Union Stagehands:	Local 8 IATSE
Steward:	Chris Day Tel: 856-905-6045
Union Business Agent:	Michael Barnes Tel: 1-800-732-9335

Patriots Theater Stage Layout



George Washington Ballroom Layout

