

FIELD TRIP GUIDE

2024 - 2025

205 WEST STATE STREET
TRENTON, NJ 08608

NEW JERSEY
STATE MUSEUM



Inspiration. On display.

TABLE OF CONTENTS

WELCOME	3
RULES & RESERVATIONS	4
PLANETARIUM	5
WORKSHOPS	6
ASK THE EXPERTS	11
VIRTUAL FIELD TRIPS	12
HOMESCHOOLS	14
CODE OF CONDUCT	15

WELCOME

OUR MISSION

The New Jersey State Museum is a center for the exploration of science, history, and the arts. We preserve and share stories that inspire curiosity and creativity for the enrichment of our communities.



SCIENCE, HISTORY, ART

It's all under one roof! Explore prehistoric fossils, discover New Jersey's first people, learn about New Jersey history, and immerse yourself in art spanning three centuries.

To see more about our galleries, visit statemuseum.nj.gov

RULES & RESERVATIONS



When you call or email our reservation line, please have the following information ready:

- Desired date of visit and one alternate date.
- Number of students and adults (chaperones & teachers) attending.
- Arrival and departure time. Your day will start with a Museum Welcome 10-15 minutes before your first program.
- Programs you are interested in; if you aren't sure, we can help create your day.

Things to know:

- We require at least one chaperone for every 10 students.
- Groups arriving late will be accommodated to the best of our ability. However, we are unable to offer refunds for programs missed due to lateness.

Payments:

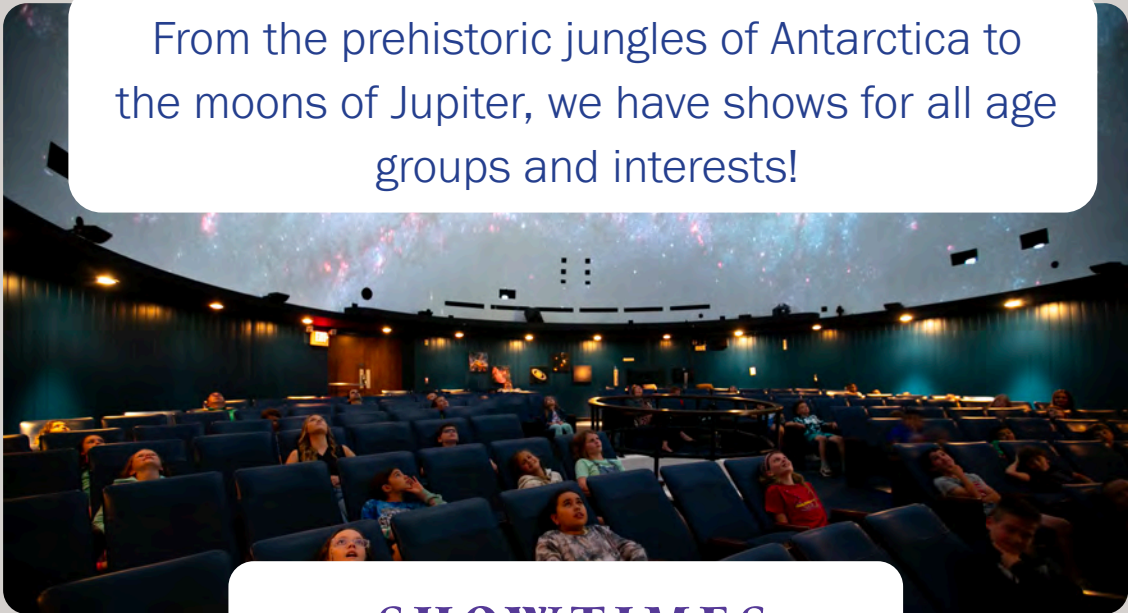
- Reservations for programs must be made at least two weeks in advance. Groups will receive a confirmation email at the time of booking, followed by an invoice.
- Full payment is due two weeks before program date.
- Please confirm final head count before program date.
- We accept credit cards over the phone, confirmed POs, and checks made out to "Treasurer, State of New Jersey."
- Trenton Public School District and Title 1 schools receive a 20% discount.

Please Note: All programs are subject to change. We reserve the option to reschedule or cancel programs if we are unable to serve you.

reservations.NJSM@sos.nj.gov

PLANETARIUM

From the prehistoric jungles of Antarctica to the moons of Jupiter, we have shows for all age groups and interests!



SHOWTIMES

TUESDAY - FRIDAY: 10 AM, 11 AM, 1 PM

- Shows begin promptly at the scheduled time. We are unable to issue refunds for late arrivals.
- Our planetarium seats 140 people. Larger groups will be split into two or more shows.
- Minimum group size is 15 people.

Visit the LEARN tab on our website for a complete list of shows and trailers. Shows run 45 minutes and include a Sky Talk about the New Jersey night sky.

NEW! Booking for October to February? Ask about our Planetarium Q&A option with our Assistant Curator for Planetarium Education, Dr. Jacob Hamer.

COST

\$5 per person, including teachers and chaperones
Payment due two weeks in advance

reservations.NJSM@sos.nj.gov

609-292-1382

WORKSHOPS

Examine real fossils, engineer a home, or learn about seasons and weather in our solar system!

Enhance your field trip with these hands-on experiences, designed around New Jersey's curriculum standards. Gallery Guides, designed to encourage students to engage and explore our long-term exhibits, are available at the Museum & on our website under the LEARN tab.

- We offer workshops for a wide range of grades, from pre-kindergarten through 12th grade.
- All workshops are 45 minutes long.
- All workshops can accommodate groups of 15 – 25.
- Groups with a larger size will be divided into multiple sessions.

Groups over 200 students cannot be accommodated on the same day but may be divided into multiple days if needed.



COST

\$5 per person
Payment due two weeks in advance

PRE-K TO 1ST GRADE

We offer three workshops focusing on art, dinosaurs, and space that incorporate elements of play and inquiry-based learning for preschool through first grade students.

ELEMENTARY SCHOOL

Our elementary workshops are for second through fifth graders. Using scaffolding and inquiry-based learning, these workshops build on topics throughout the Museum, and allow for a fully comprehensive visit for your group. These workshops focus on seasons, archaeology, and paleontology.

MIDDLE SCHOOL

Our middle school workshops are for sixth through eighth graders, building on topics covered in previous workshops and throughout the Museum. We also introduce complex concepts to develop critical thinking skills. These workshops focus on paleontology, engineering, and archaeology.

HIGH SCHOOL

Our high school workshop encourages inquiry and critical thinking by incorporating scientific data, prompting students to work together to create possible solutions for real-world problems. We also offer career talks with our Assistant Curators of Science and Planetarium Education to add to your field trip experience.

NEW!



PAINT ME A STORY PRE-K TO 1ST GRADES

Art and storytelling go hand in hand as we discover how the art on display tells stories and engages our minds and bodies. Explore color theory and learn to make colors to express yourself.

DINO MOTION PRE-K TO 1ST GRADES

Discover how dinosaurs and prehistoric reptiles moved through their environments as we combine science and imaginative play. Learn about trackways and what they can tell us about ancient animals.

PLANETS ON PARADE PRE-K TO 1ST GRADES

Meet our favorite star and the planets in our solar system. Learn the order of the planets and how they orbit around the Sun, then design your own special planet!



SHIFTING SEASONS 2ND TO 5TH GRADES

What's the weather going to be like tomorrow? What about in six months? Explore how the Earth rotates around the Sun and the reason for the seasons, and learn how scientists predict the weather.



JUNIOR PALEONTOLOGIST 2ND TO 8TH GRADES

Do you have what it takes to be a paleontologist? Explore the history of life on Earth through games and describe real fossils – some hundreds of millions of years old – by developing and honing your observation and description skills, just like real paleontologists. This workshop is available for a wide range of grades, and is adjustable to fit your grade level!

LENAPE POTTERY IN THE ARCHAEOLOGICAL RECORD 2ND TO 8TH GRADES

Learn how archaeologists trace the development of pottery through the Woodland Period. Students will examine pottery sherds and work together to piece pottery like real archaeologists. This workshop is available for a wide range of grades, and is adjustable to fit your grade level!

HEARTH & HOME 5TH TO 8TH GRADES

Using Indigenous homes as inspiration, student teams construct home models designed to combat the climate challenges of North American ecosystems and practice being sustainable engineers.

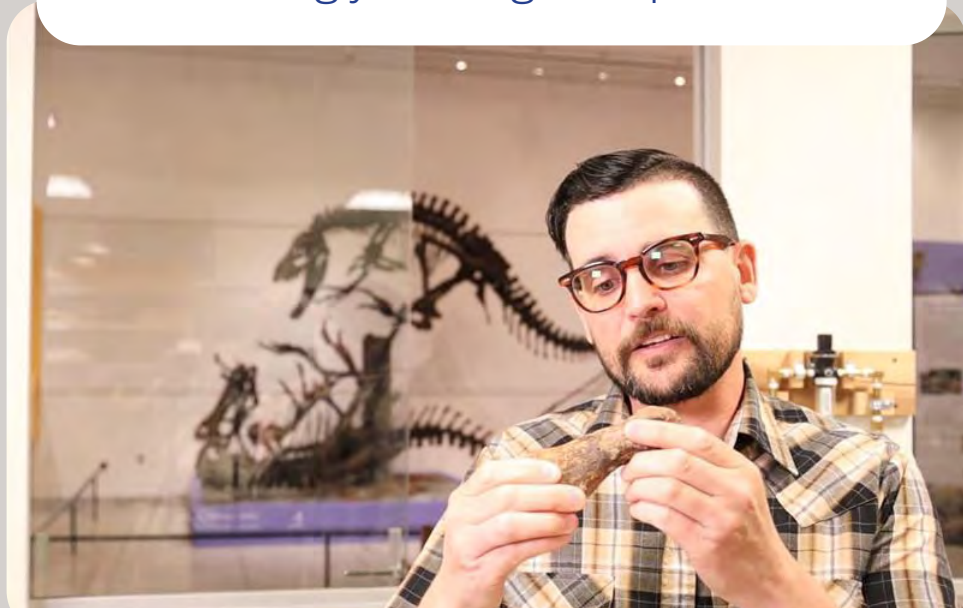


CHANGING COASTLINES 9TH TO 12TH GRADES

Using scientific data, explore how climate scientists understand patterns of change using global temperatures over the past century. Students will learn about the impacts of sea level rise here in New Jersey and consider possible solutions for the future.

ASK THE EXPERTS

Meet the Museum's scientists -
And bring your toughest questions!



Our Ask the Expert talks are best for larger groups, but groups of any size can reserve the program. They offer a more in-depth discussion of scientific topics explored in the Museum, led by our own Museum curators! These live talks are 45 minutes long and we have options for elementary through high school students.

Virtual options are also available; ask about how to Zoom our Expert into YOUR classroom!

Offered for Paleontology, Archaeology, and Astronomy.

COST

\$5 per person
Payment due two weeks in advance

VIRTUAL FIELD TRIPS

Bring the Museum to you with three incredible kits for distance learning!

Each kit features a gallery tour*, hands-on craft project, and three classroom-ready worksheets.

New this year, add on a live Q&A with a Museum Educator. Gather questions from your students and submit them ahead of time for the best experience.

*Pre-recorded, interactive tours use Google Classroom. Tour content may differ based on grade level.

COST

\$75 per kit of 25 projects;
\$20 for Q&A Add-On;
\$30/box shipping or
FREE in-person pick up.

FANTASTIC FOSSILS



Meet our favorite prehistoric New Jersey creatures and the science of recreating ancient worlds.



LENAPE ARTISTRY



Explore the cultural heritage and rich artistic traditions of New Jersey's Lenape people.



ART & INSPIRATION



Explore sculpture in the Fine Art collection and be inspired to create your own with a variety of supplies.



HOMESCHOOLS

NEW!

We are excited to announce the start of Homeschool Days at the Museum on September 27 and March 7!

Join the Museum for a day full of programming specially designed with the needs of homeschool families in mind. Registration includes two drop-in workshops running on the hour at 10 AM, 11 AM, 1 PM, and 2 PM and your choice from two age-appropriate Planetarium shows: “One World, One Sky” for pre-K to 2nd grade at 11 AM, and “Worlds Beyond Earth” which is for general audiences 5th grade and older at 1 PM.

Each Planetarium show includes a Q&A section with our Assistant Curator for Planetarium Education, Dr. Jacob Hamer, and workshops will focus on paleontology and archaeology. Gallery guides will be available to prompt self-exploration in our permanent galleries, and each child will receive a craft activity to take home.

REGISTRATION OPENS A MONTH BEFORE EVENT DATE:

<https://forms.office.com/g/YXmeddpafq>

COST

\$10 per person



Homeschools groups are also welcome to reserve any of our workshops or Planetarium shows at any time. Each workshop requires a minimum of 15 students, and Planetarium shows require a total group size of 15.

CODE OF CONDUCT

The New Jersey State Museum is dedicated to creating a safe, enjoyable, and memorable experience for all our visitors while protecting our exhibits to ensure everyone can appreciate them. Museum staff are committed to do everything we can so visitors feel safe, welcome, and respected, and we ask that all visitors contribute to that goal by following the Museum guidelines.

- Respect Museum staff, volunteers and other visitors. Behavior or language that is inappropriate, abusive, harassing, or threatening will not be tolerated.
- There is no running, climbing, sitting or standing on any railings, barricades, or exhibits. Please refrain from shouting, screaming, raised voices or any kind of disruptive behavior.
- No flash photography allowed in the Museum. Pictures without flash may be taken for personal, noncommercial use. Please try and refrain from taking photographs of visitors who are not with your group. Tripods and selfie sticks are not permitted.
- While the Museum includes both hands-on and hands-off areas, all hands-on sections are clearly marked. Assume a hands-off/eyes-only policy when no sign is present.
- Food and drink are not allowed in Museum galleries. Picnic tables outside are available for use.
- Backpacks are not allowed in the galleries. Students should leave their backpacks on the bus, or deposit them in bins provided at the Planetarium or at the Main Entrance. Chaperones can carry backpacks on the front of their body or hold them low to their side.
- Chaperones are responsible for the appropriate behavior of all students in their group. We require 1 chaperone per 10 students, and for our youngest visitors (ages 6 and younger), we require 1 chaperone per 5 students. Chaperones are required to remain with students at all times.
- The Discovery Den on the second floor is reserved for families with young children (ages 0 - 8); please keep school groups out of that area.

By visiting the Museum, you agree to comply with Museum guidelines and be responsible for your group. Refusal to follow this Code of Conduct and any rules - whether on print materials or as directed by NJ State Museum staff - can result in removal from the Museum.



**WE LOOK FORWARD TO HAVING YOU AT
THE NEW JERSEY STATE MUSEUM!**



**NEW JERSEY
STATE MUSEUM** 

Inspiration. On display.

www.statemuseum.nj.gov