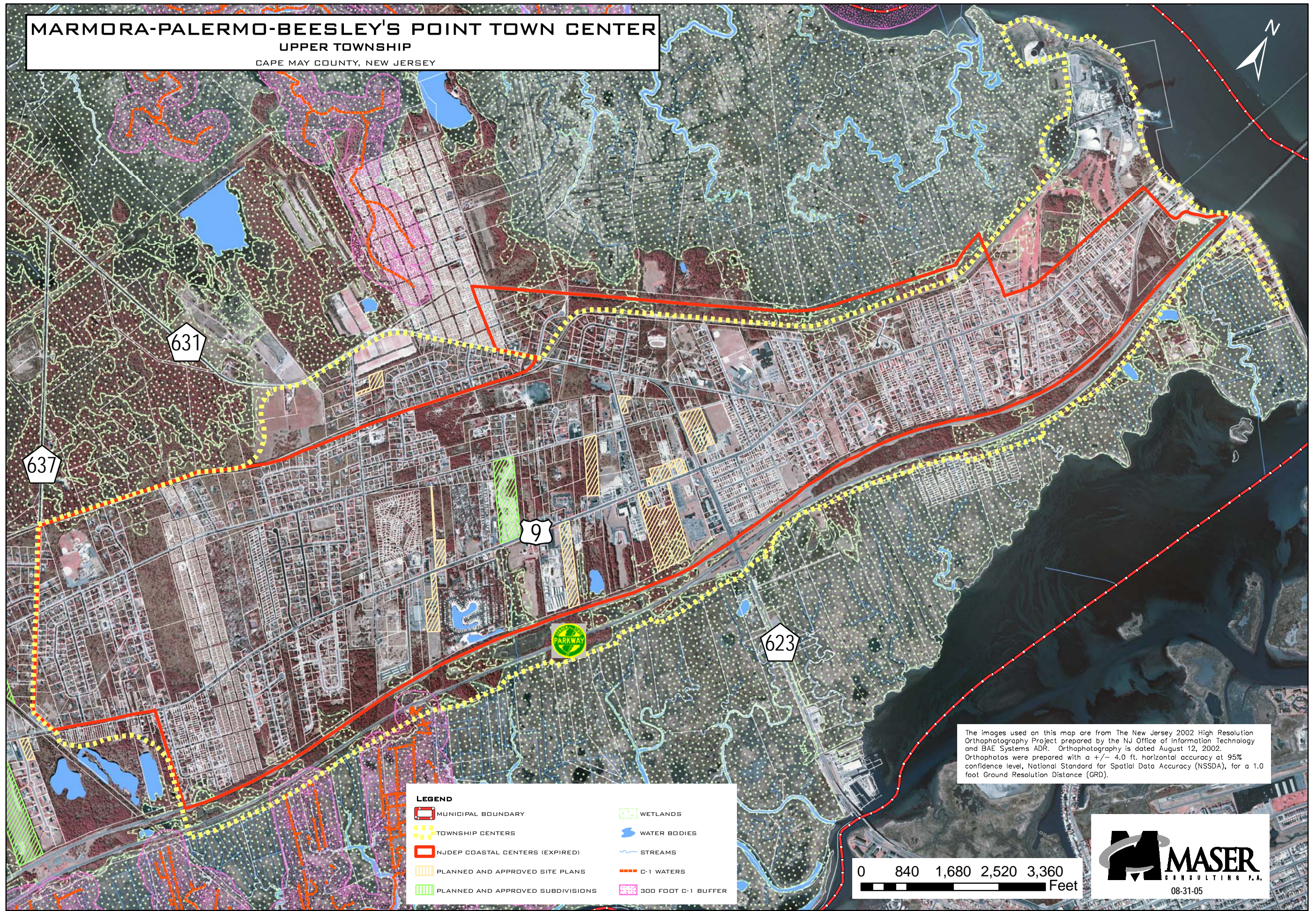


MARMORA-PALERMO-BEESLEY'S POINT TOWN CENTER

UPPER TOWNSHIP

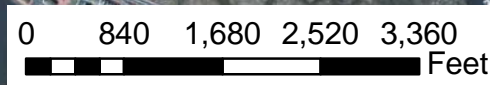
CAPE MAY COUNTY, NEW JERSEY



The images used on this map are from The New Jersey 2002 High Resolution Orthophotography Project prepared by the NJ Office of Information Technology and BAE Systems ADR. Orthophotography is dated August 12, 2002. Orthophotos were prepared with a +/- 4.0 ft. horizontal accuracy at 95% confidence level, National Standard for Spatial Data Accuracy (NSSDA), for a 1.0 foot Ground Resolution Distance (GRD).

LEGEND

MUNICIPAL BOUNDARY	WETLANDS
TOWNSHIP CENTERS	WATER BODIES
NJDEP COASTAL CENTERS (EXPIRED)	STREAMS
PLANNED AND APPROVED SITE PLANS	C-1 WATERS
PLANNED AND APPROVED SUBDIVISIONS	300 FOOT C-1 BUFFER



MASER
CONSULTING P.A.
08-31-05