

# **Burlington City: Plan Endorsement**

## **Burlington County Route 130 Corridor**

### **Municipal Questionnaire**

**Please review these questions and fill in as much as you can to paint a picture of your status and trends in planning:**

*(We'd love to see additional planning documents if you have them, though we're primarily interested in you telling the story of your community in narrative form so that we get a feel for what makes it unique and what's important to you and your citizens.)*

#### **1. Visioning**

Do you have a vision statement for your future? Please share it here:

***Burlington City Vision 2030:***

***"Our City of Burlington is one of the region's most desirable, attractive, and safe communities. Through citizen leadership and City-benefiting public/private partnerships, the City has leveraged its unique riverfront location, transportation access, talented workforce, classic Main Street, and rich history to build a diverse and sustainable economy. The City of Burlington is a highly desirable place to live and work and is a regional draw for commerce, entertainment, industry, education, and tourism." (Ref: BC2010 MP, p. 1.4.)***

If so, when was it last affirmed? **June 2010; Master Plan Reexamination 2020 in progress. See also attached, US Census 2019 Community Survey**

Through what process? **Master Plan: Community Visioning Workshops**

Who participated? **Public, Land Use Board, Governing Body, and Professional Staff**

What matters most to your community? **Public Health and Safety, Maintain Historic Heritage, Strong Commercial and Industrial Tax Base.**

Have you thought about your sustainability? Your contributions to Green House Gases (GHG)? How to reduce your GHG contributions? **Sustainability goals and objectives included in City Master Plan; advance latest technologies to reduce GHG.**

#### **2. Resiliency**

Have you started planning for resiliency to climate change and sea level rise? **Yes**

If so, please attach any planning documents. **Updated FEMA Flood Plan Maps 2017; FEMA CRS certified 15%.**

Who has been engaged in the discussions? **FEMA, Burlington County Coastal Coalition, and the Nai/Charm Workshop Process through the State Office of Planning Advocacy. The Burlington City Community Development Director, Planner and Engineer have participated in this process.**

Have you identified your risks? (Flooding? Erosion? Heat island effect? Increased storms? Disease? Other? **Flood prone areas are identified in our Municipal SWM Plan. In addition, ice & wind storms are of concern. The City location with full frontage along the tidal Delaware River of critical concern. Ice Floe, and freeze/thawing impacts on River Promenade a concern (currently in re-construction). Burlington City supports the pending N.J. MLUL amendment to include "A climate change related Hazard Vulnerability Assessment".**

Have you assessed vulnerable populations? **Yes, through the CRS program, the City monitors repeated flood losses.**

**We are in the process of evaluating and identifying the needs of vulnerable populations. We use all the guidance offered by both the State and County Governments.**

Do you have an inventory of community assets? Schools, emergency buildings, senior care, churches, businesses, infrastructure, transportation, energy, communications, health and medical facilities, hazardous materials; food water and shelter, safety and security, natural areas, parks, other?

**Community asset mapping attached:**

- **Historic District**
- **Zoning**
- **Opportunity Areas**
- **Transect/Urban Design**
- **Trail, Bicycle, Greenway, Waterway**

### **3. Equity**

Do you have issues of Environmental Justice or other concerns about equity in your community? **No**

If so, list communities/neighborhoods that have borne an outsized burden of pollution, traffic and or other considerations that impact on quality of life. **Burlington City historically provides equitable application of circulation improvements and NJDEP Environmental Remediation.**

What is the status of your affordable housing agreement? And, the status of implementation? **The Township has a settlement agreement with the Fair Share Housing Center that is court approved (Order on Fairness Hearing issued by Judge Covert on February 19, 2020). Our Housing Element and Fair Share Plan was approved by the Planning Board (revised December 3, 2018) and adopted by the Governing Body. Burlington City is actively implementing the FSP.**

### **4. Community Characterization**

If not identified in the earlier questions, what are the key elements that define your community? **Historic heritage, diversity, affordability, balance of residential and business tax ratables, strong schools, ample public recreational opportunities, enthusiastic Governing Body working hard to improve and advance Burlington City into the 21<sup>st</sup> century.**

### **5. Mapping**

Please attach a file with your zoning map in GIS format (shape files). **Hard Copy Attached; available on City website.**

If you have your community assets and vulnerabilities mapped, please include them as well. **Hard Copy Attached**

Who is your municipal contact for GIS mapping? (Please include email and phone #) **Joseph Augustyn, PP, AICP, Alaimo Group**

#### **6. State Plan Consistency**

Please review the 8 goals of the State Development and Redevelopment Plan (attached) and address how your master plan and vision for your community is (or is not) consistent with these goals, policies & indicators. **The Burlington City 2010 Master Plan is entirely consistent the goals of the State Development and Redevelopment Plan. The City participated in the Cross-Acceptance process. The Master Plan includes "Local and Regional Consistency" which includes a detailed discussion regarding consistency with Burlington County's strategic vision, the DVRPC's long range plan and the State Development and Redevelopment Plan (Ref: BC2010 MP, p. III. 2-3).**

#### **7. State requests**

Please list any 'asks' that you have of the state including OPA, DEP, DOT, DCA, BPU or any other state agencies. OPA is committed to bringing them to the table, though we can't guarantee exactly the resolution that you're looking for.

**Burlington City has joined with its regional neighbors to address traffic related concerns along the Route 130 and Main Street/Route 541 corridors resulting from regional development, particularly warehouses and distribution centers, in our respective communities. The City participates in the "River Route" coalition. As we work to address shared concerns, we anticipate that the NJDOT and N.J. Transit will be a willing and reliable partner. Burlington City adopted in 2020 its Downtown Circulation Plan (Part of Master Plan), which included Steering Committee action and four (4) public sessions. The City requests continued assistance from NJDEP for environmental remediation, and flood control along the Delaware River.**

Please feel free to add anything else that you feel would be pertinent to a planning discussion and  
THANK YOU for your time!



# LAND DEVELOPMENT

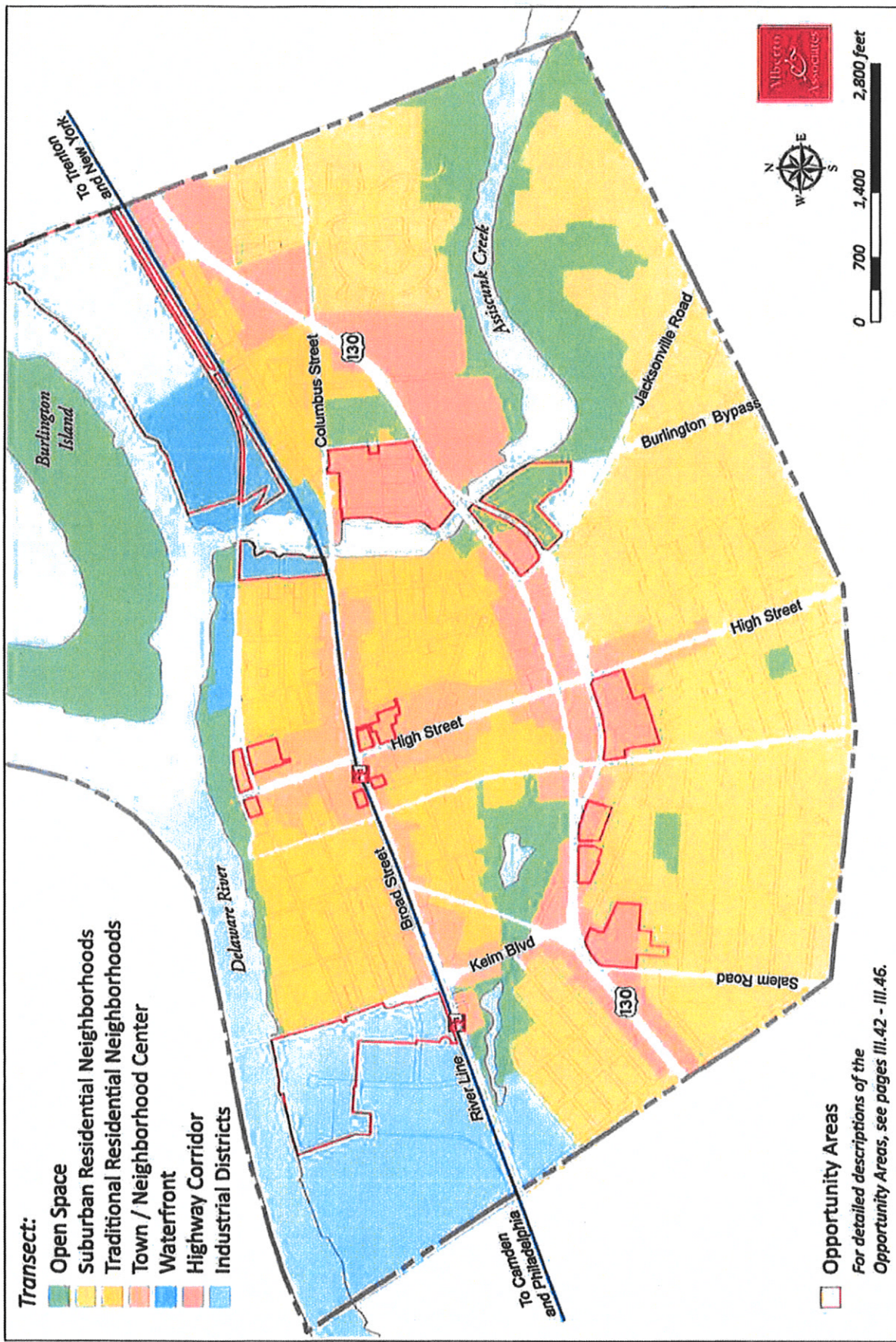






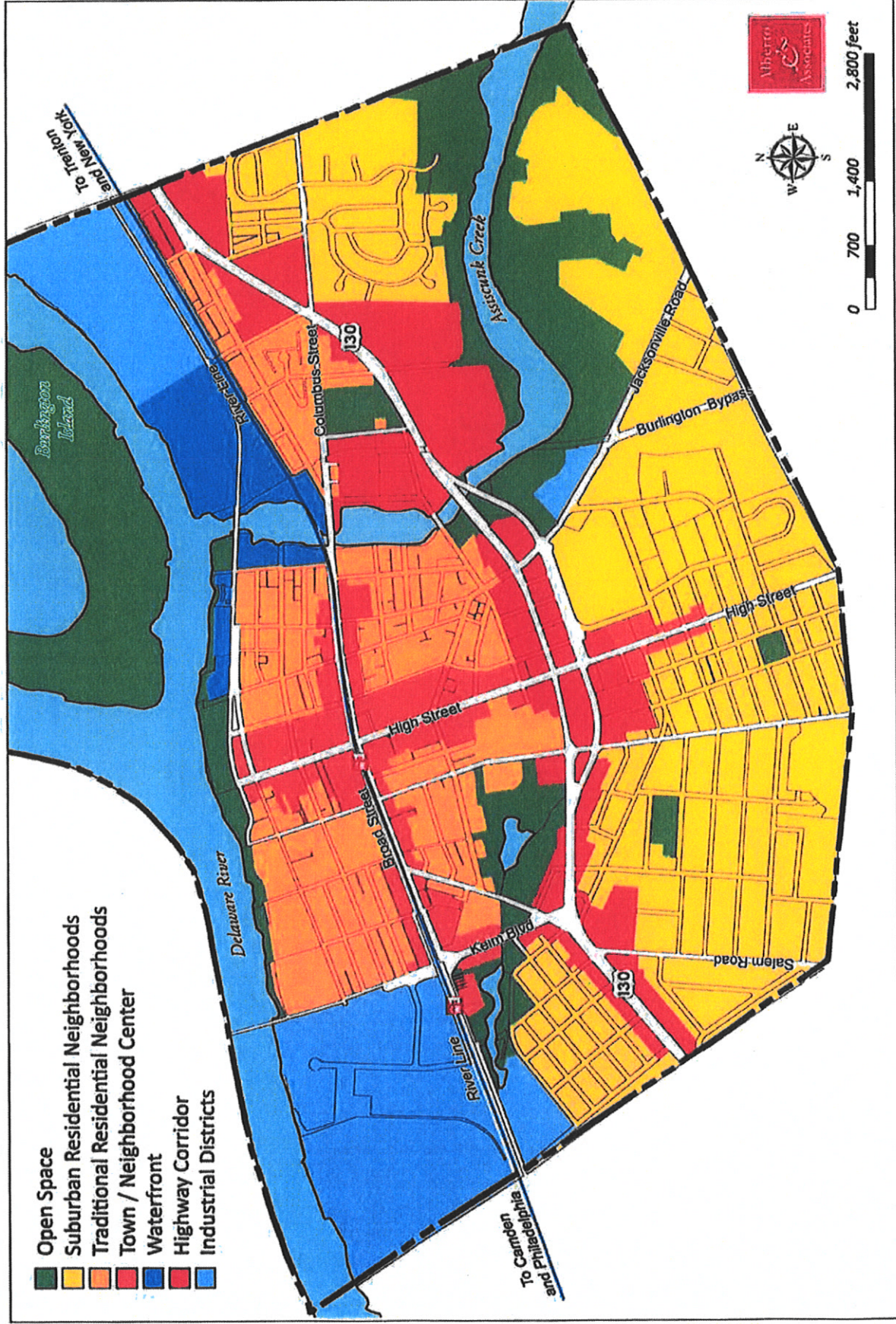


# Opportunity Areas / Transect Map



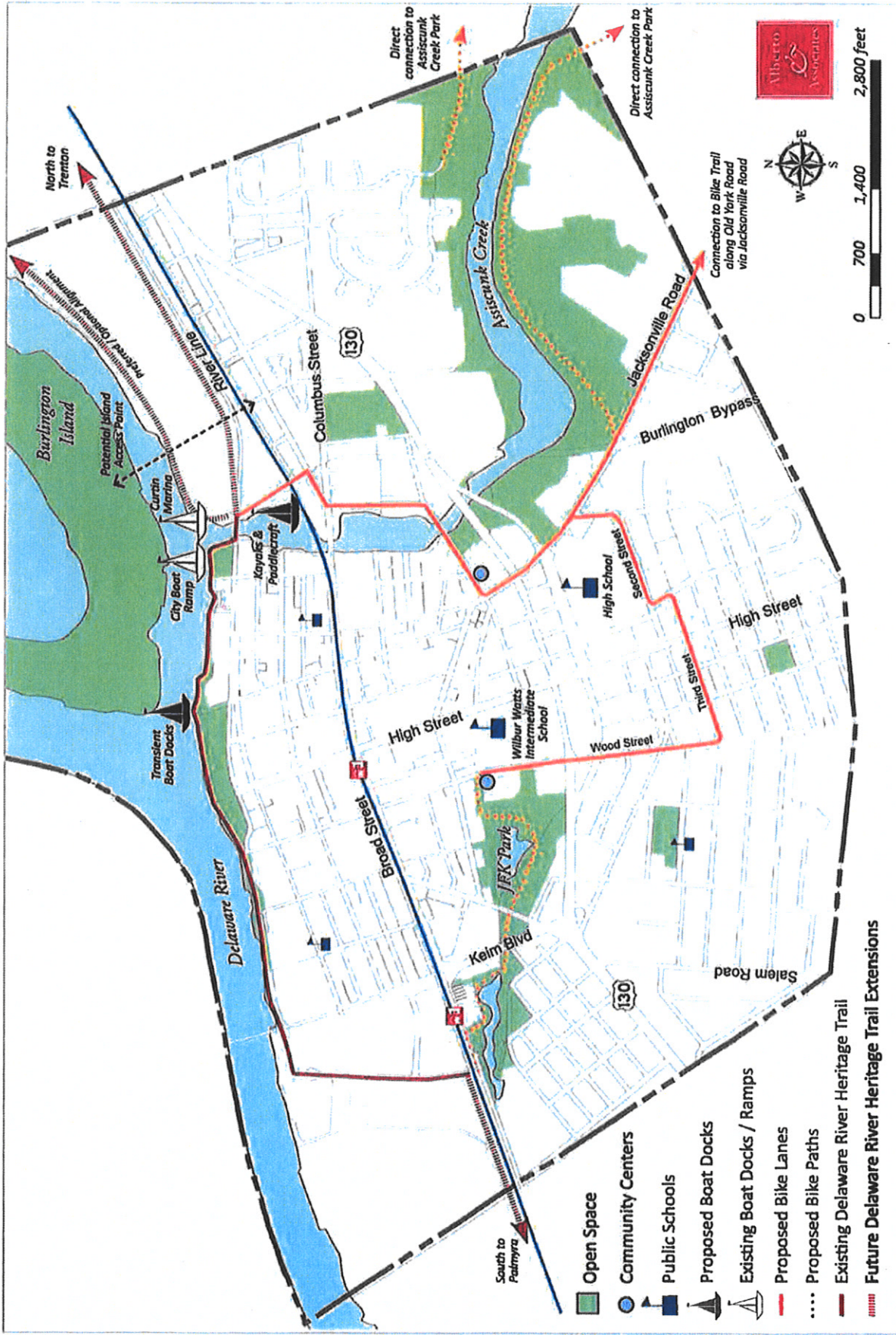


# Transect Map





# Proposed Trail, Bicycle, Greenway & Waterway Network





# Burlington city, Burlington County, New Jersey

Place in Burlington County



on County, New Jersey is a city, town, place equivalent (CDP), Burlington County. Burlington city, Burlington County, New of -1 square miles.

2019 Census Release



POPULATION  
9,815



MEDIAN HOUSEHOLD INCOME  
\$57,690



POVERTY RATE  
13.3%



BACHELOR'S DEGREE OR HIGHER  
22.2%

## People and Population

### Age and Sex

42.2 +/- 2.7

Median age in Burlington city, Burlington County, New Jersey

38.1 +/- 0.1

Median age in the United States

Table: DP05  
Table Survey/Program: 2019 American Community Survey 5-Year Estimates

### Population by Age Range in Burlington city, Burlington County, New Jersey

Under 5 years - 7.0%

18 years and older - 78.0%

65 years and older - 18.7%

0 10 20 30 40 50 60

### Veterans

7.9% +/- 1.9%

Veterans in Burlington city, Burlington County, New Jersey

7.3% +/- 0.1%

Veterans in the United States

Table: S2101  
Table Survey/Program: 2019 American Community Survey 5-Year Estimates

### Veterans by Sex in Burlington city, Burlington County, New Jersey

Male - 89.4%

Female - 10.6%

0 10 20 30 40 50 60 70

**Language Spoken at Home****13.0%** +/- 3.3%

Language other than English spoken at home in Burlington city, Burlington County, New Jersey

**21.6%** +/- 0.1%

Language other than English spoken at home in the United States

Table: DP02

Table Survey/Program: 2019 American Community Survey 5-Year Estimates

**Types of Language Spoken at Home in Burlington city, Burlington County, New Jersey**

English only - 87.0%

Spanish - 4.9%

Other Indo-European languages - 5.4%

Asian and Pacific Islander languages - 1.9%

Other languages - 0.9%

**Race and Ethnicity****Race****9,815** +/- 29

Total population in Burlington city, Burlington County, New Jersey

**324,697,795** +/- \*\*\*\*\*

Total population in the United States

Table: DP05

Table Survey/Program: 2019 American Community Survey 5-Year Estimates

**Population by Race in Burlington city, Burlington County, New Jersey**

White alone - 59.3%

Black or African American alone - 27.8%

American Indian and Alaska Native alone - 0.3%

Asian alone - 3.5%

Native Hawaiian and Other Pacific Islander alone - 0.0%

Some other race alone - 1.8%

Two or more races - 7.5%

**Health****Disability****15.9%** +/- 2.5%

Disabled population in Burlington city, Burlington County, New Jersey

**12.6%** +/- 0.1%

Disabled population in the United States

Table: DP02

Table Survey/Program: 2019 American Community Survey 5-Year Estimates

**Types of Disabilities in Burlington city, Burlington County, New Jersey**

Hearing difficulty - 3.0%

Vision difficulty - 2.6%

Cognitive difficulty - 7.1%

Ambulatory difficulty - 8.7%

Self-care difficulty - 3.7%

Independent living difficulty - 7.9%

**Education****Educational Attainment****91.0%** +/- 2.3%

High school graduate or higher in Burlington city, Burlington County, New Jersey

**88.0%** +/- 0.1%**Education Attainment in Burlington city, Burlington County, New Jersey**



High school graduate or higher in the United States

Table: DP02  
Table Survey/Program: 2019 American Community Survey 5-Year Estimates

## Employment

### Commuting

27.7 +/- 1.6

Average commute to work (in minutes) in Burlington city, Burlington County, New Jersey

26.9 +/- 0.1

Average commute to work (in minutes) in the United States

Table: DP03  
Table Survey/Program: 2019 American Community Survey 5-Year Estimates

High School or equivalent degree - 38.5%

Some college, no degree - 22.4%

Associate's degree - 7.8%

Bachelor's degree - 13.8%

Graduate or professional degree - 8.4%

### Means of Transportation to Work in Burlington city, Burlington County, New Jersey

Drove alone - 82.1%

Carpool - 8.7%

Public transportation - 3.0%

Walked - 2.7%

Other means - 1.1%

Worked at home - 2.4%

0 10 20 30 40 50 60 70

## Income and Poverty

### Earnings

\$43,627 +/- \$3,068

Female median year-round, full-time earnings in Burlington city, Burlington County, New Jersey

\$43,022 +/- \$107

Female median year-round, full-time earnings in the United States

Table: S2001  
Table Survey/Program: 2019 American Community Survey 5-Year Estimates

### Median Earnings for Fulltime, Year-Round Workers by Sex in Burlington city, Burlington County, New Jersey

Male - \$50,754

Female - \$43,627

0 10000 20000 30000 40000 50000