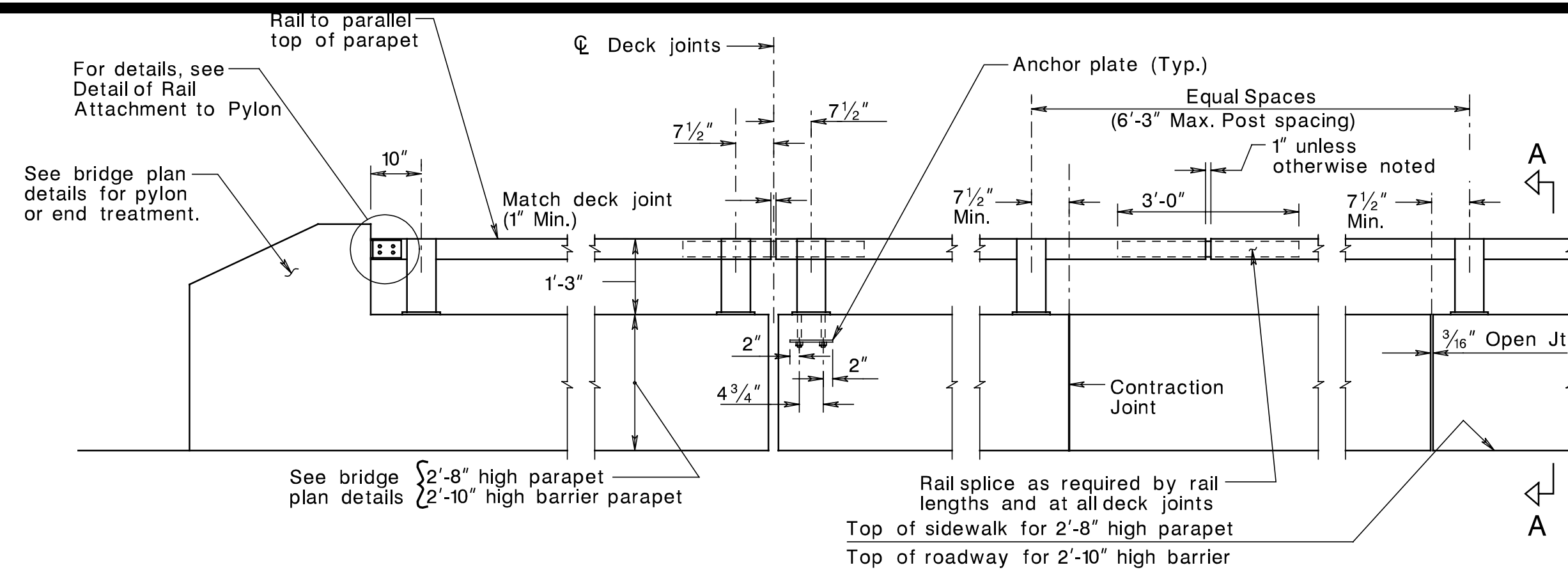
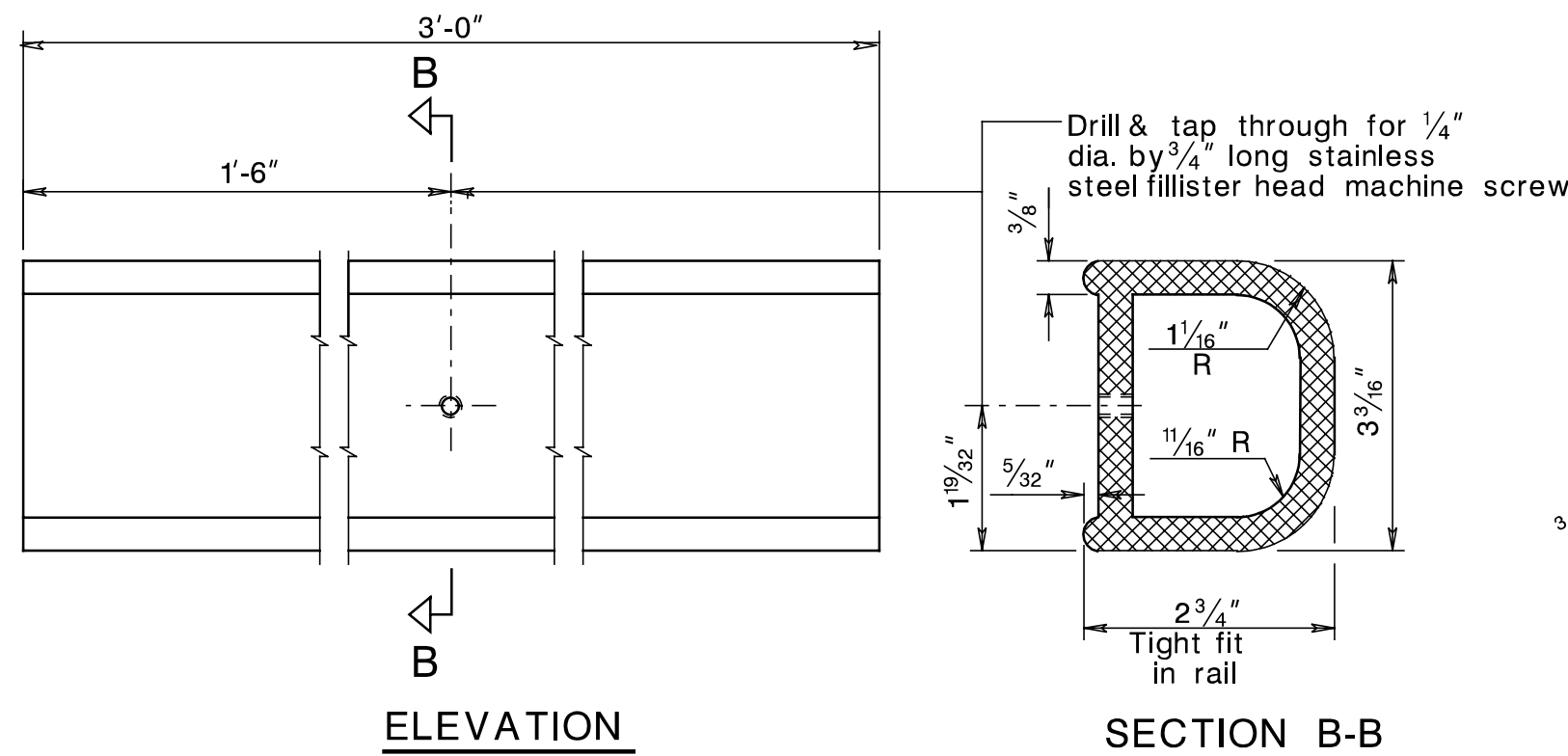
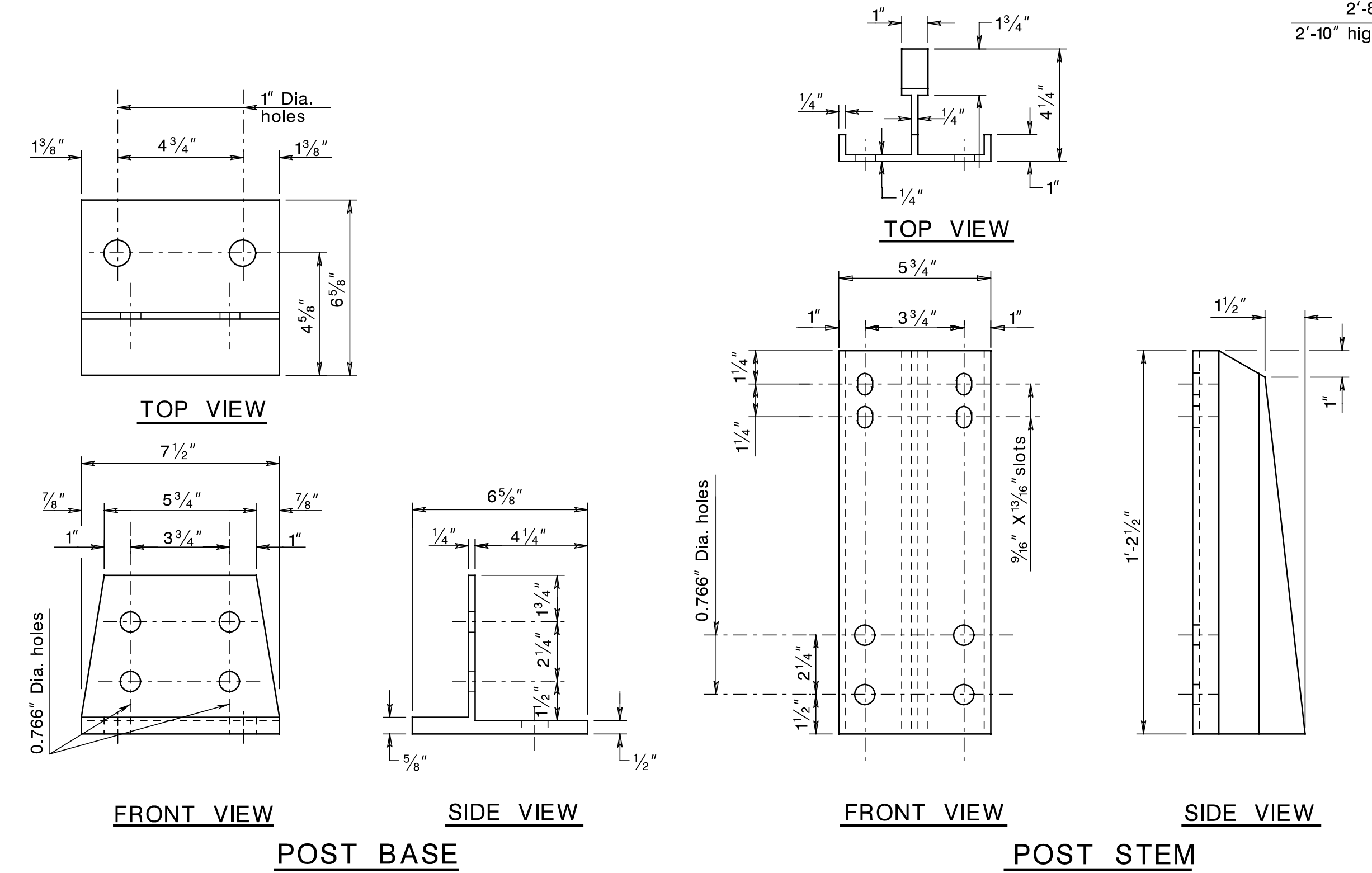


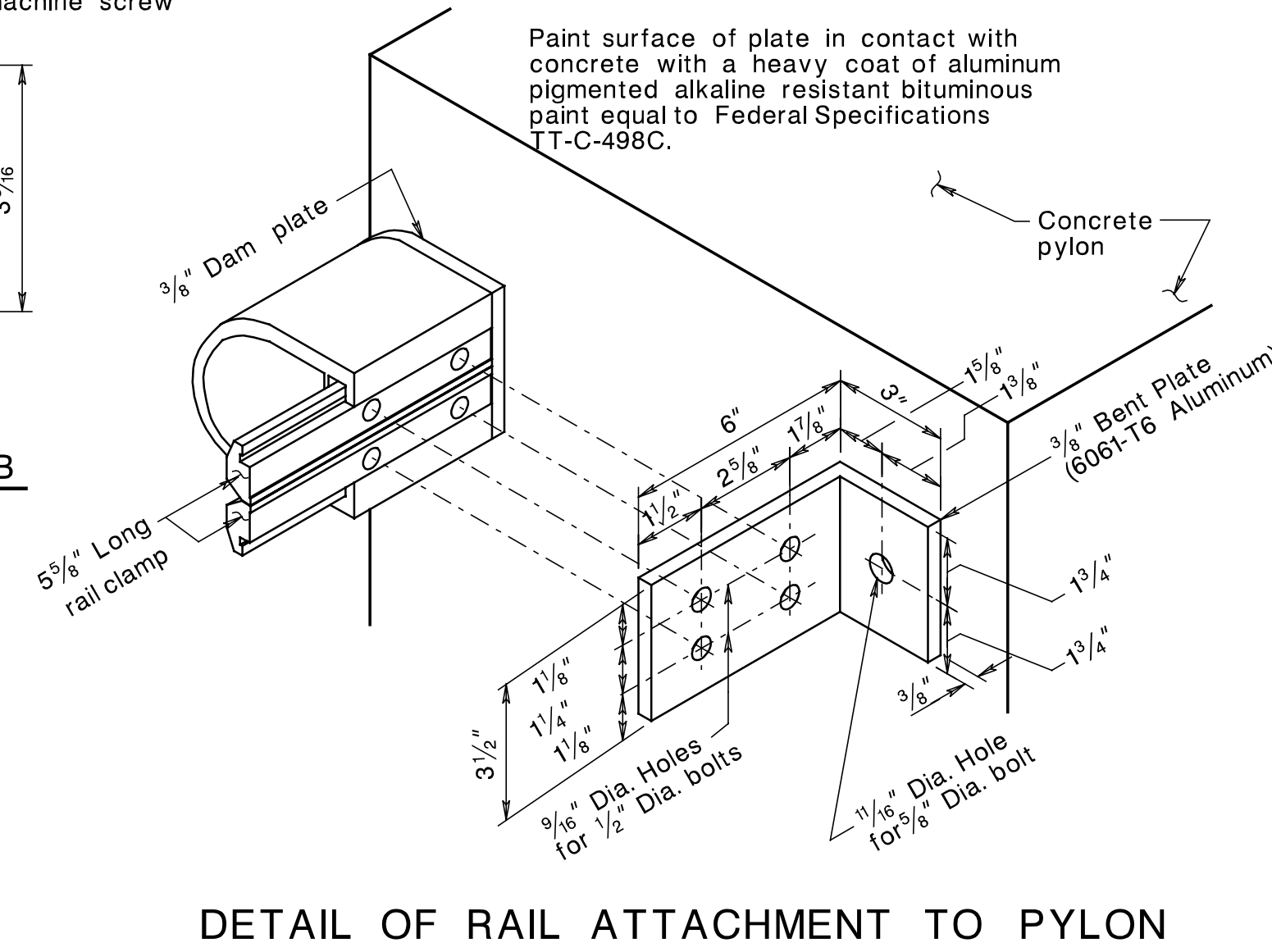
STATE	FEDERAL PROJECT NO.	SHEET	TOTAL SHEETS
N. J.			
STRUCTURE NO.			
STRUCTURE NAME			



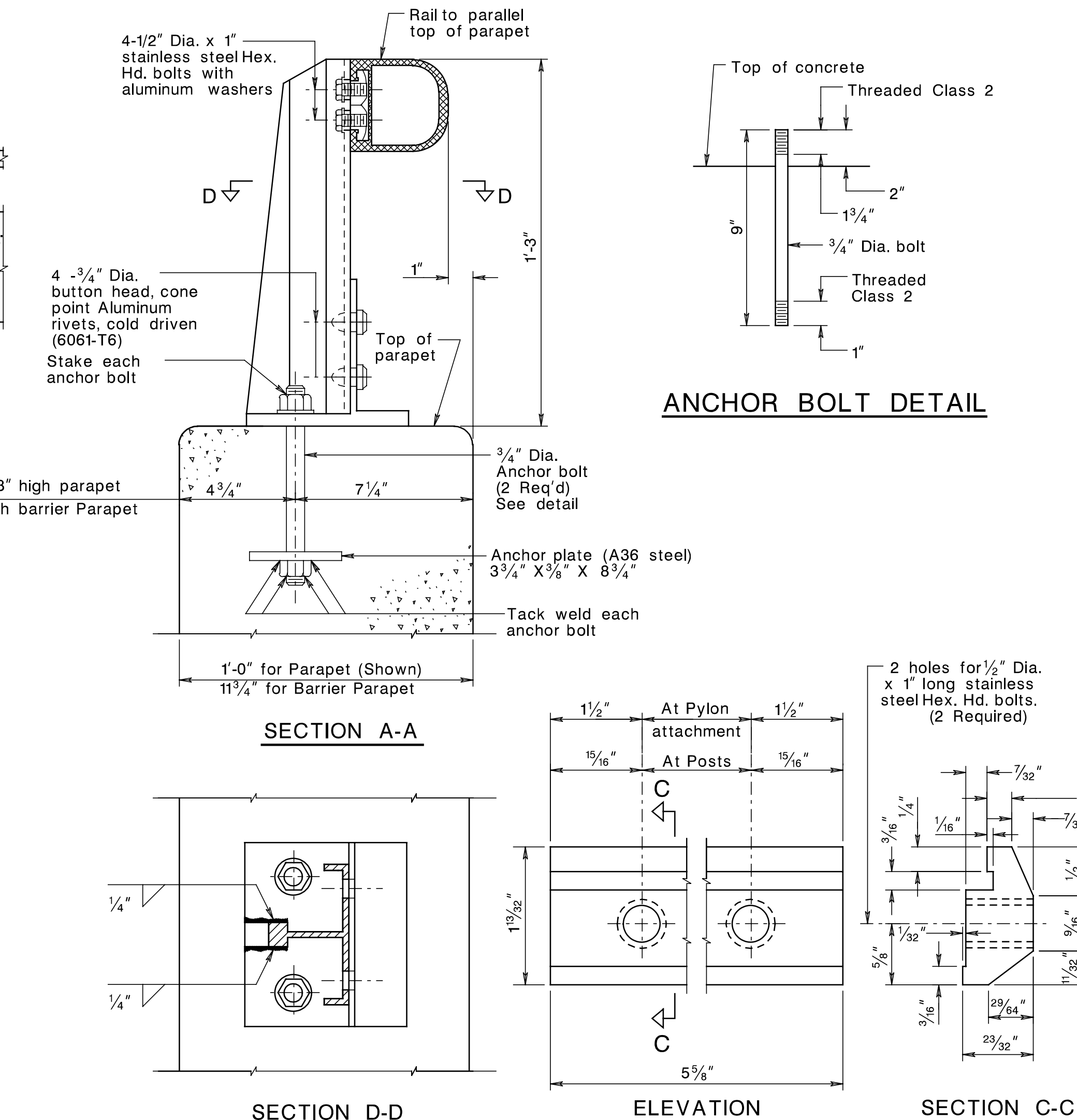
TYPICAL EXTERIOR ELEVATION OF CONTINUOUS RAILING SYSTEM



DETAIL OF RAIL SPLICE

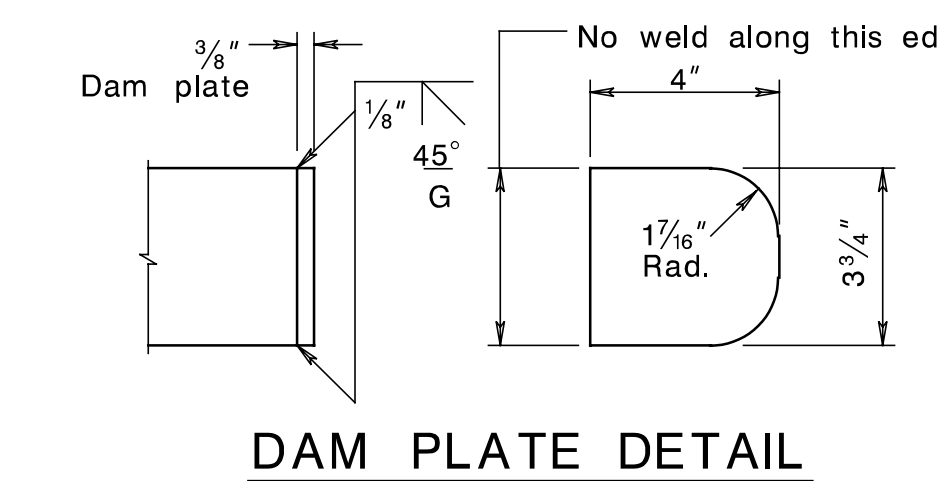


DETAIL OF RAIL ATTACHMENT TO PYLON

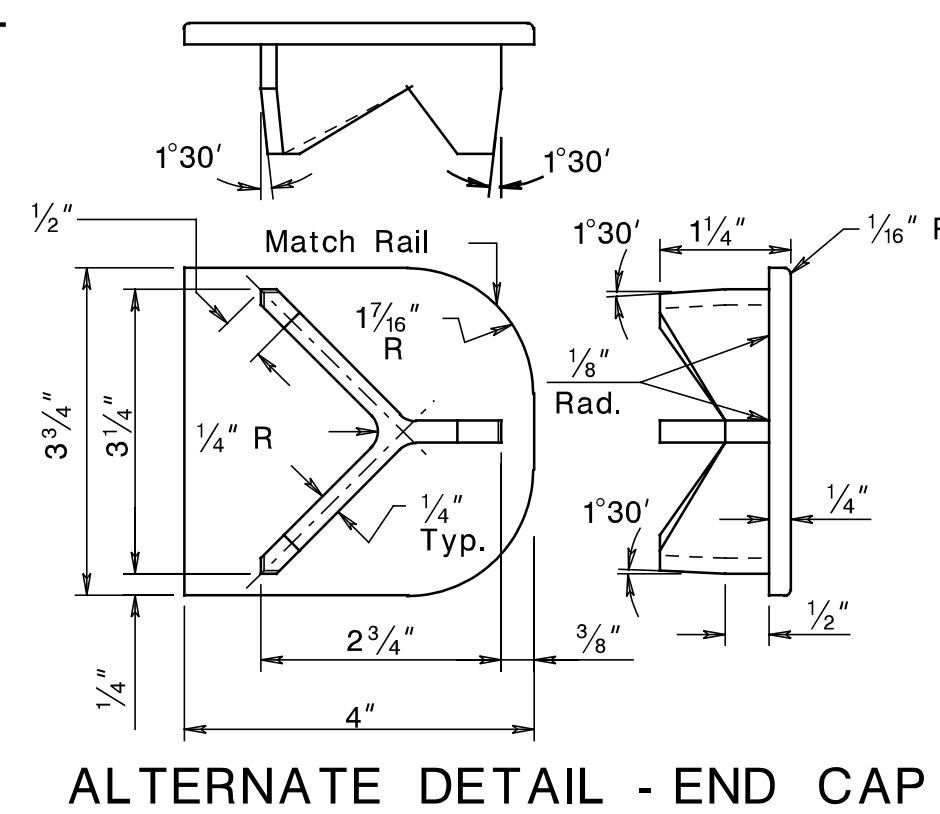


ANCHOR BOLT DETAIL

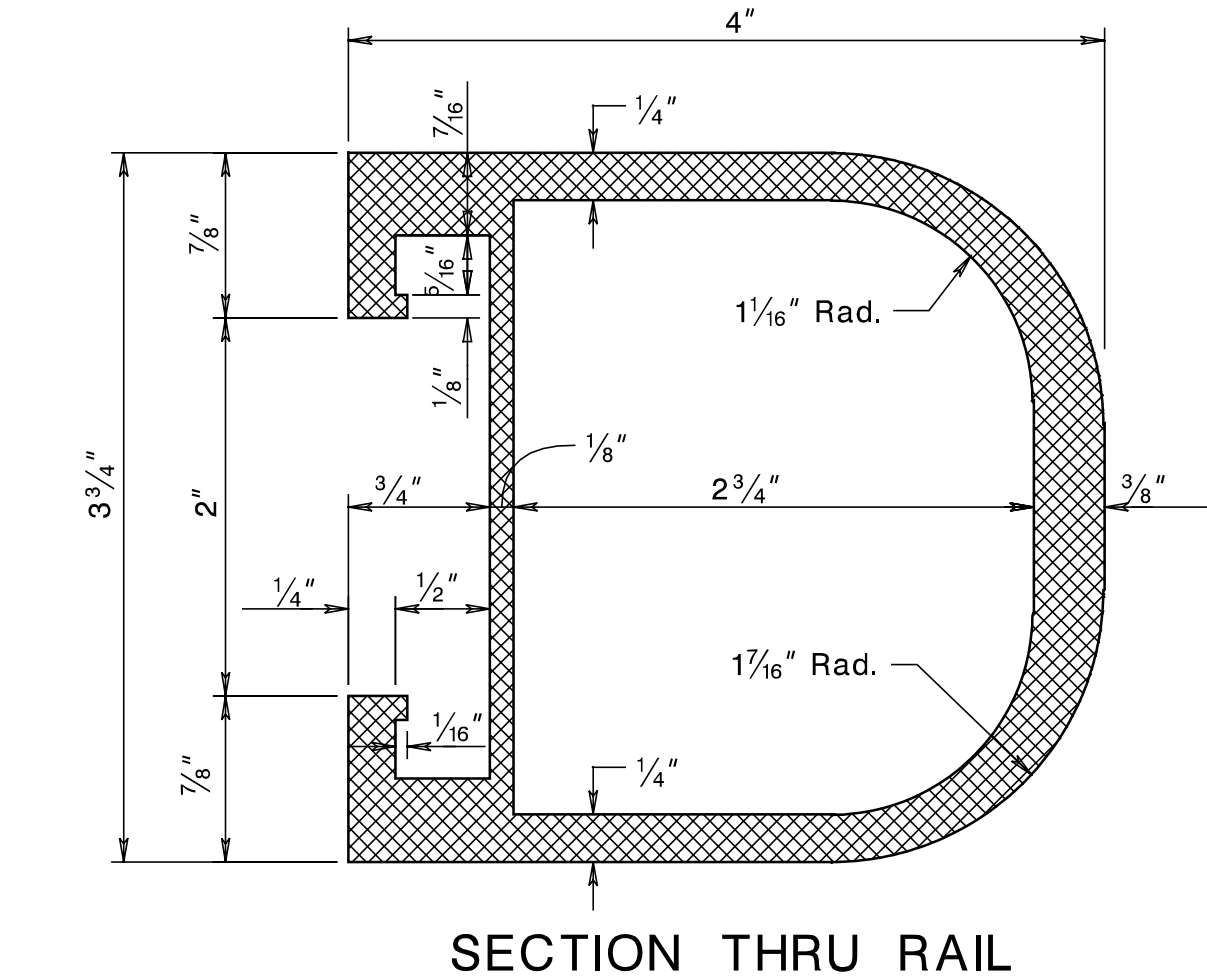
DETAILS OF RAIL CLAMP



DAM PLATE DETAIL



ALTERNATE DETAIL - END CAP



SECTION THRU RAIL

GENERAL NOTES

1. Material for posts, bases, and rail clamps shall be ASTM B221 Aluminum Alloy 6061-T6.
2. Washers shall be ASTM B209 Alclad 2024-T3 and nuts shall be ASTM B211 Aluminum Alloy 6061-T6.
3. Anchor bolts shall be ASTM A276 stainless steel, Type 302, Type 304 or Type 430. Top nuts shall be Aluminum thick nuts ASTM B211 or B316 Alloy 6061-T6 Class 2 thread. Bottom nuts shall be ASTM A325.
4. Dam Plates shall be used to close all open railing ends. Material shall be ASTM B209 Aluminum Alloy 6061-T6. As an alternate, drive-in end caps may be used. Caps shall be aluminum alloy sand mold castings complying with ASTM B26, Alloy SG 356.6-T6.
5. End caps shall be welded to the rails.
6. Where necessary for post alignment, Aluminum Alloy shim material shall be used where required by the Engineer. Shim material shall be ASTM B209, Alloy 1100-0.
7. Paint underside of base with a heavy coat of Aluminum pigmented bituminous paint complying with ASTM D2824, Type I.
8. All anchor bolt holes and spaces between base plates and concrete shall be thoroughly caulked with a caulking compound conforming to Federal Specifications A-A-272A, Type III or Type IV.

STANDARD DRAWING PLATE 2.1-1

NEW JERSEY DEPARTMENT OF TRANSPORTATION
BUREAU OF STRUCTURAL ENGINEERING

1-RAIL RAILING

ROUTE: SECTION:

SCALE : NONE
BRIDGE SHEET NO. OF B.

pen table= E:\System\pilot\PLA\Non-Roadway\bridge.tbl
date= 18-FEB-2005 14:58
scale= 0.084657:1.000000
ID= 16412300

CONTROL SHEET		JOB NO.	
DES. BY		CHK. BY	
DWN. BY		CHK. BY	
EST. BY		CHK. BY	
SPECS. BY			
IN CHARGE OF			