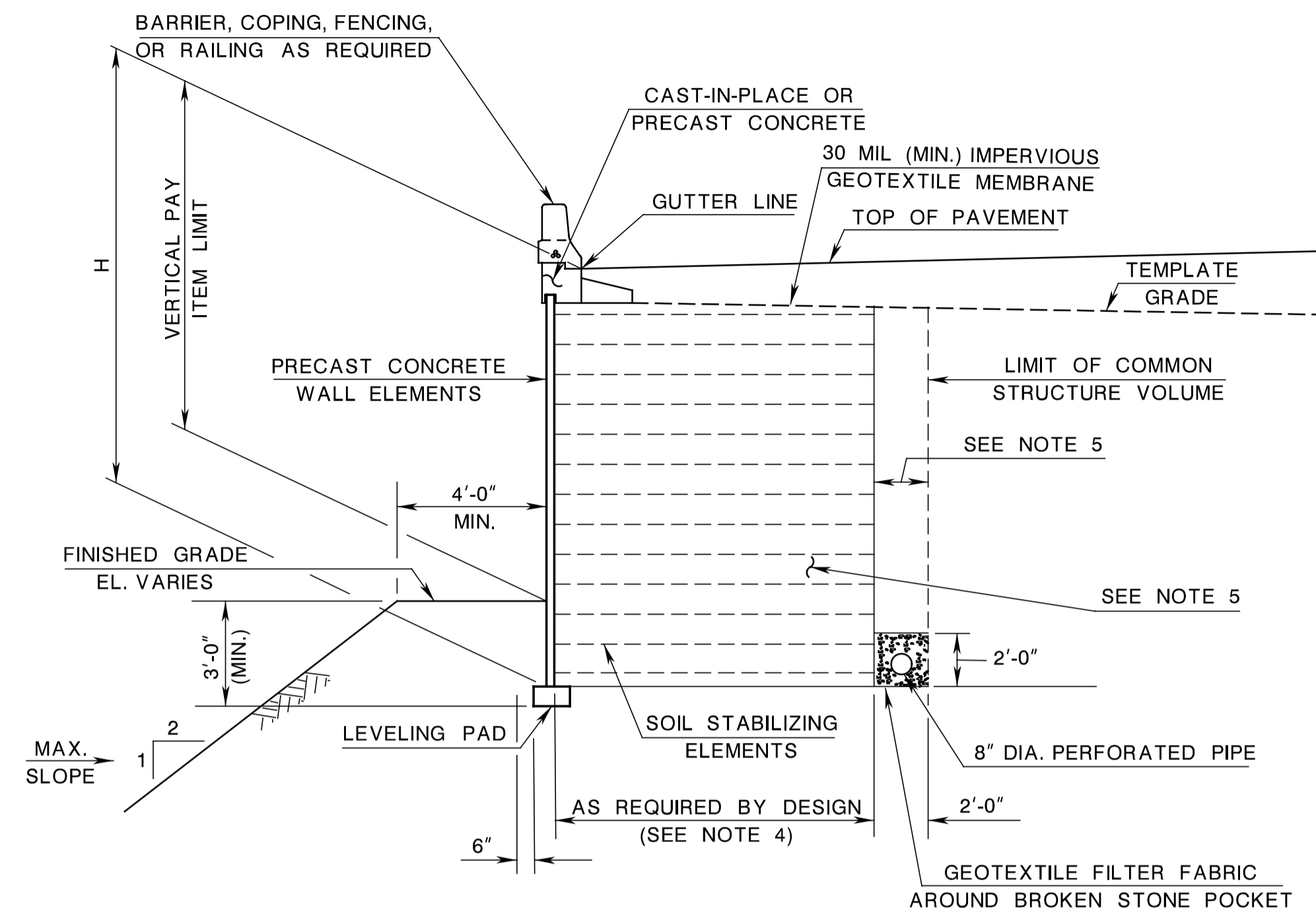
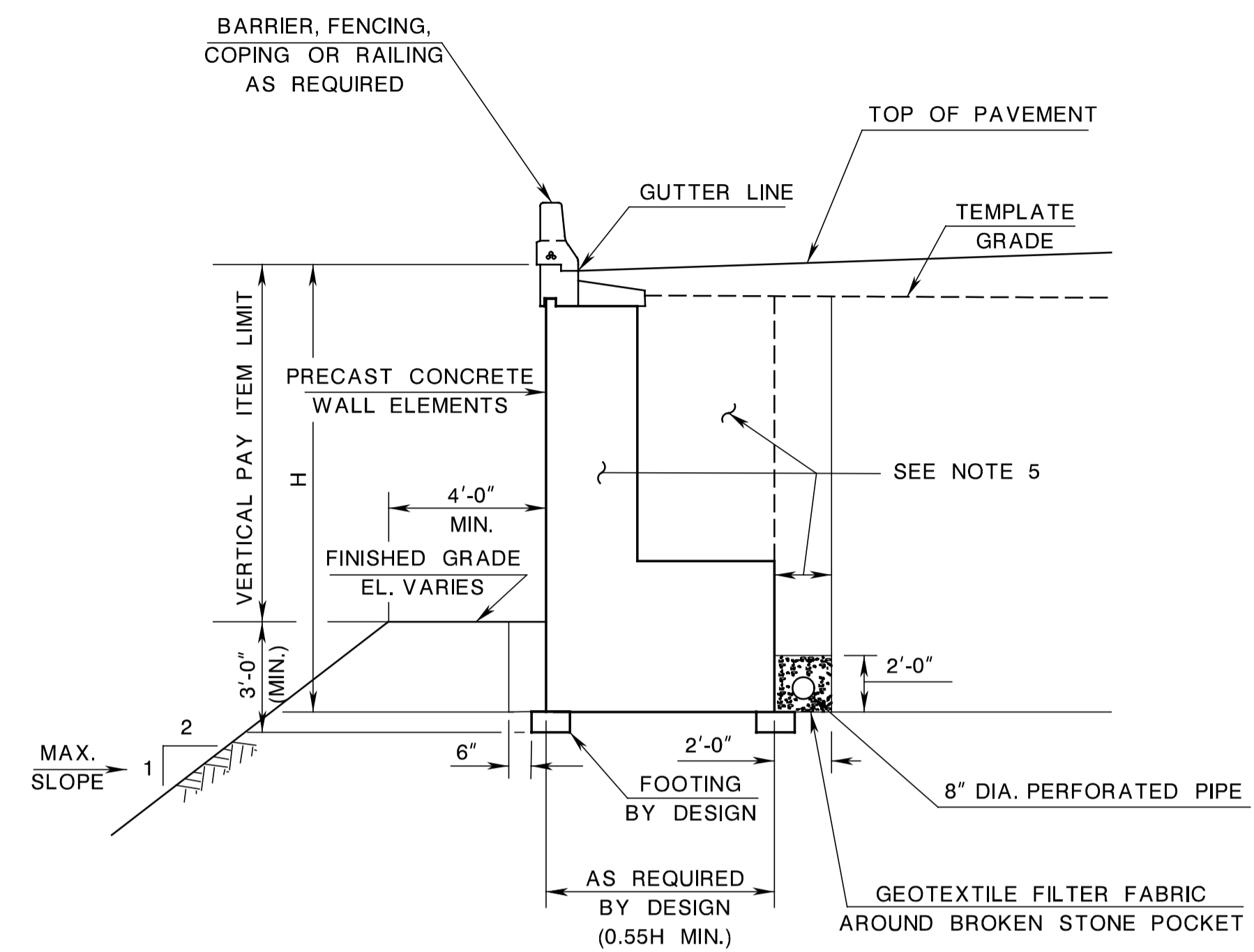


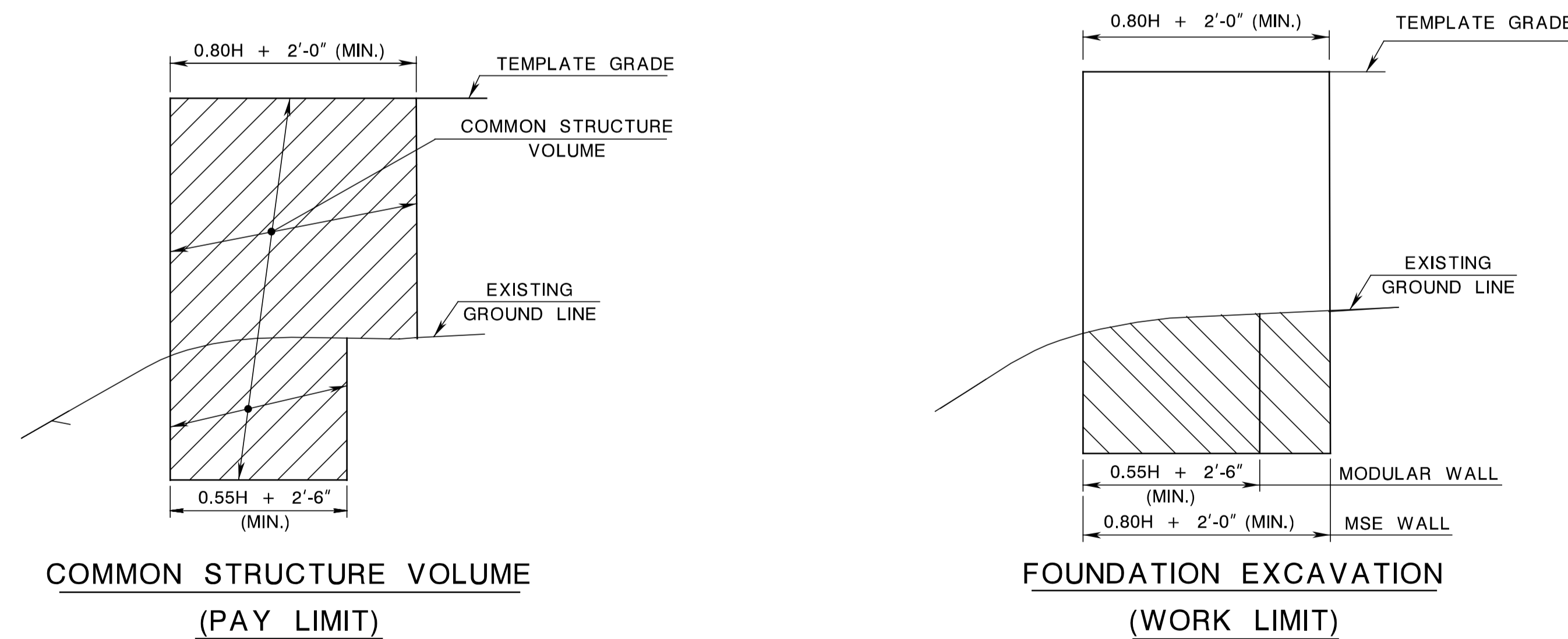
STATE	FEDERAL PROJECT NO.	SHEET	TOTAL SHEETS
N. J.			
STRUCTURE NO.			
STRUCTURE NAME			



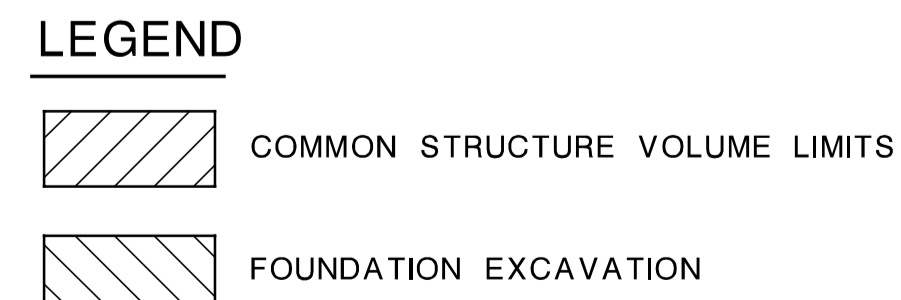
TYPICAL SECTION
MECHANICALLY STABILIZED EARTH WALL



TYPICAL SECTION
PREFABRICATED MODULAR WALL



LIMITS FOR PROPRIETARY WALL
IN CUT AND FILL SECTION



NOTES:

- PAYMENT FOR REINFORCEMENT IN FOOTINGS, BARRIER, COPING, AND PARAPETS SHALL BE INCLUDED IN THE RESPECTIVE WORK ITEMS. THE REINFORCEMENT STEEL IN BARRIER, COPING AND PARAPETS SHALL BE CORROSION PROTECTED. (REFER TO SECTION 26 OF THIS MANUAL FOR TYPES OF CORROSION PROTECTED REINFORCEMENT STEEL THAT CAN BE USED)
- FOR MSE WALLS, PROVISION OF AN IMPERVIOUS MEMBRANE UPON COMPLETION OF THE SPECIFIED BACKFILL PLACEMENT OR PROVISION OF FILLER MATERIAL OR FILTER FABRIC AT THE LOCATION OF VERTICAL AND HORIZONTAL JOINTS BETWEEN PANELS SHOULD BE VERIFIED BY THE MANUFACTURER. REFER TO SUBSECTION 520.02 OF THE SPECIFICATIONS FOR GUIDANCE.
- REFER TO SUBSECTION 520.02 OF THE STANDARD SPECIFICATIONS FOR DIRECTION ON THE TYPE OF GEO-MEMBRANE THAT SHALL BE INSTALLED. THE MEMBRANE SHALL BE PLACED SO THAT IT DRAINS AWAY FROM THE FACE OF THE WALL.
- AS REQUIRED BY DESIGN, A MINIMUM OF 0.7H SHALL BE USED TO SATISFY REINFORCEMENT LENGTH REQUIREMENTS. 0.8H PLUS 2'-0" SHALL BE USED TO SATISFY COMMON STRUCTURE VOLUME REQUIREMENTS.
- POROUS FILL OR BROKEN STONE MAY BE USED AS BACKFILL MATERIAL. (REFER TO SUBSECTION 520.02.6 OF THE SPECIFICATIONS).

THIS SHEET FOR DESIGN
INFORMATION ONLY.
NOT TO BE INCLUDED
IN CONTRACT PLANS
PLATE 2.10-2

CONTROL SECTION	JOB NO.
DES. BY	CHK. BY
DWN. BY	CHK. BY
EST. BY	CHK. BY
SPECS. BY	
IN CHARGE OF	

BDC04MB-01

STANDARD DRAWING PLATE 2.10-2

NEW JERSEY DEPARTMENT OF TRANSPORTATION
BUREAU OF STRUCTURAL ENGINEERING

WALL 1
SAMPLE CONTROL PLAN (SHEET 2)

ROUTE : SECTION :

MUNICIPALITY COUNTY

SCALE : NONE

BRIDGE SHEET NO. OF