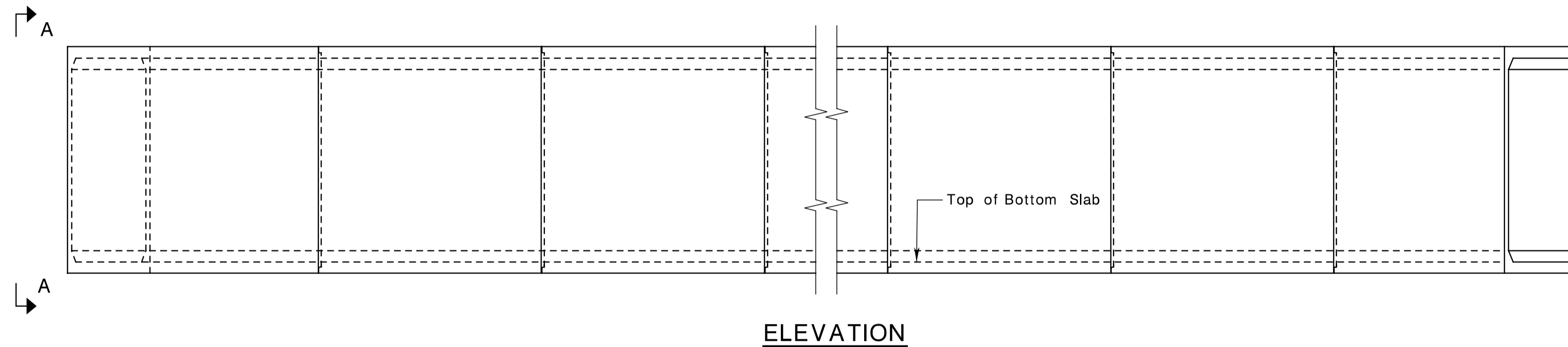
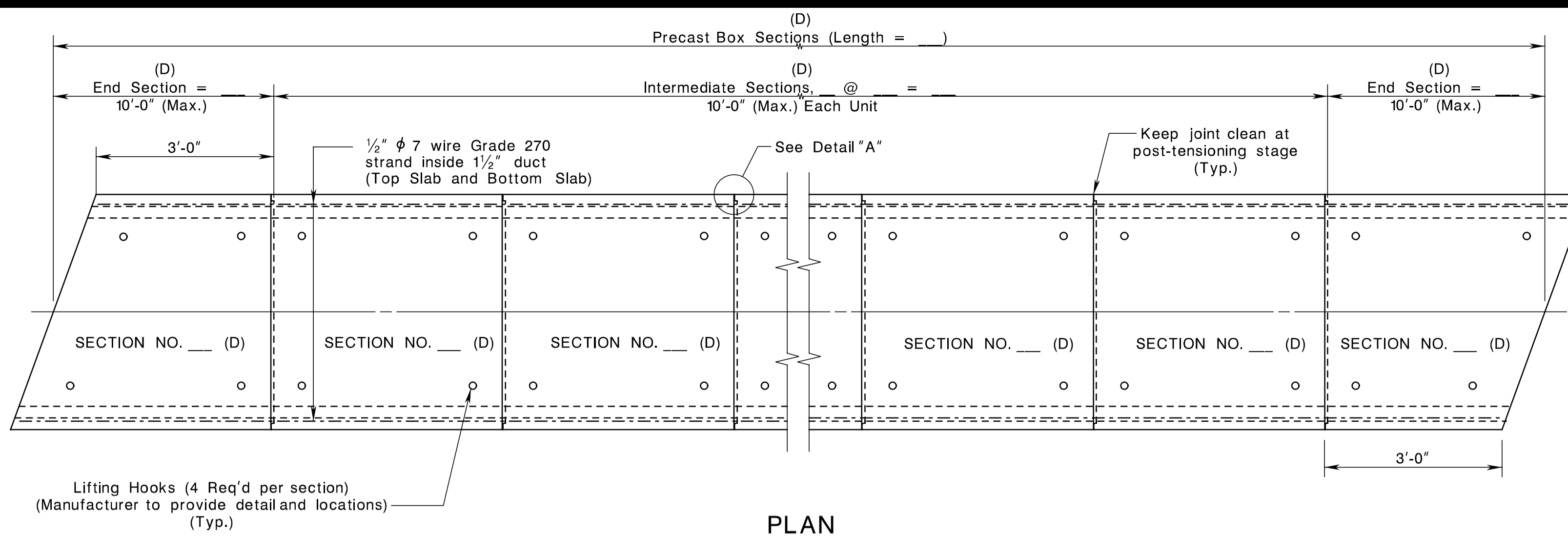
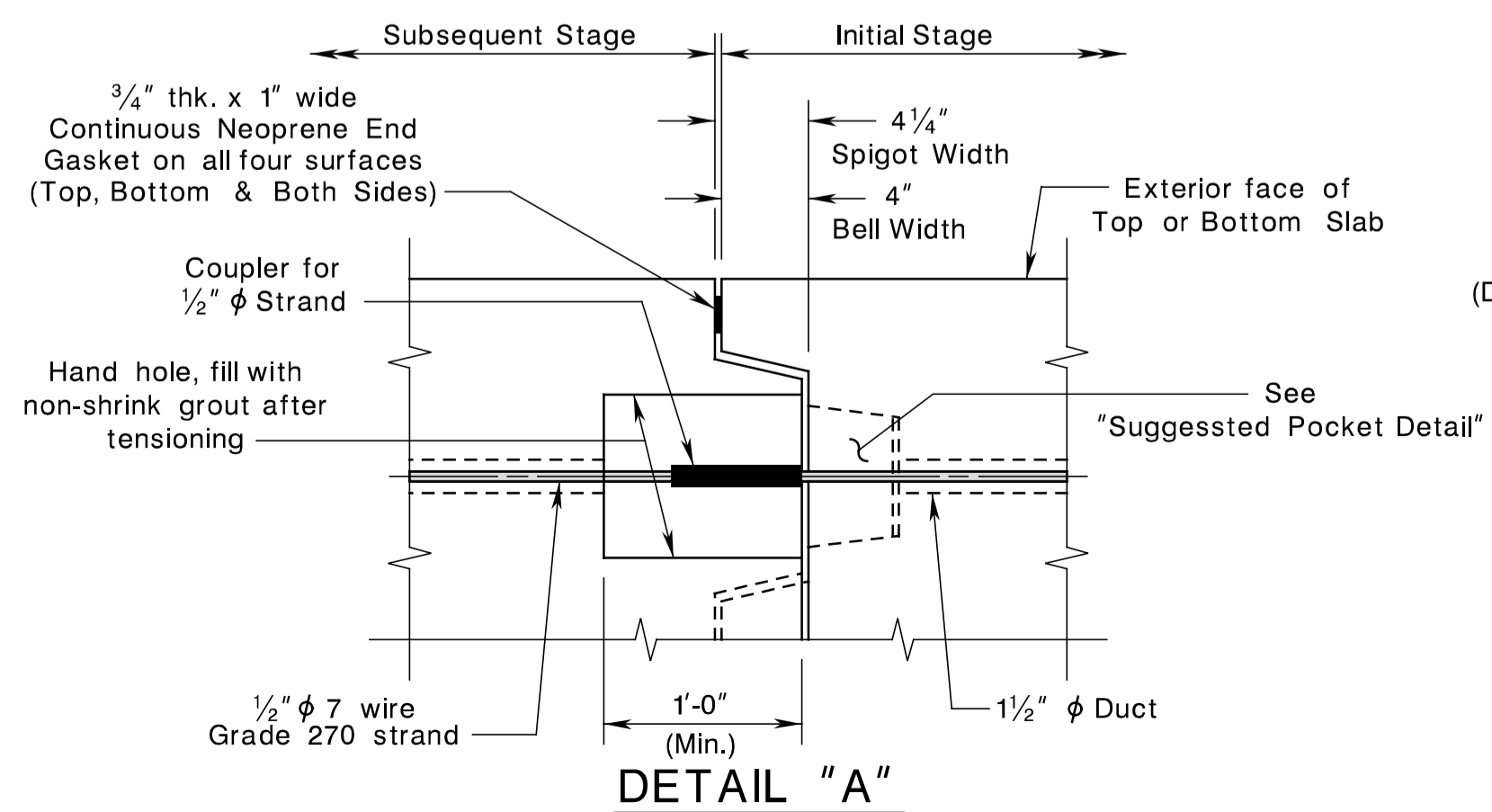
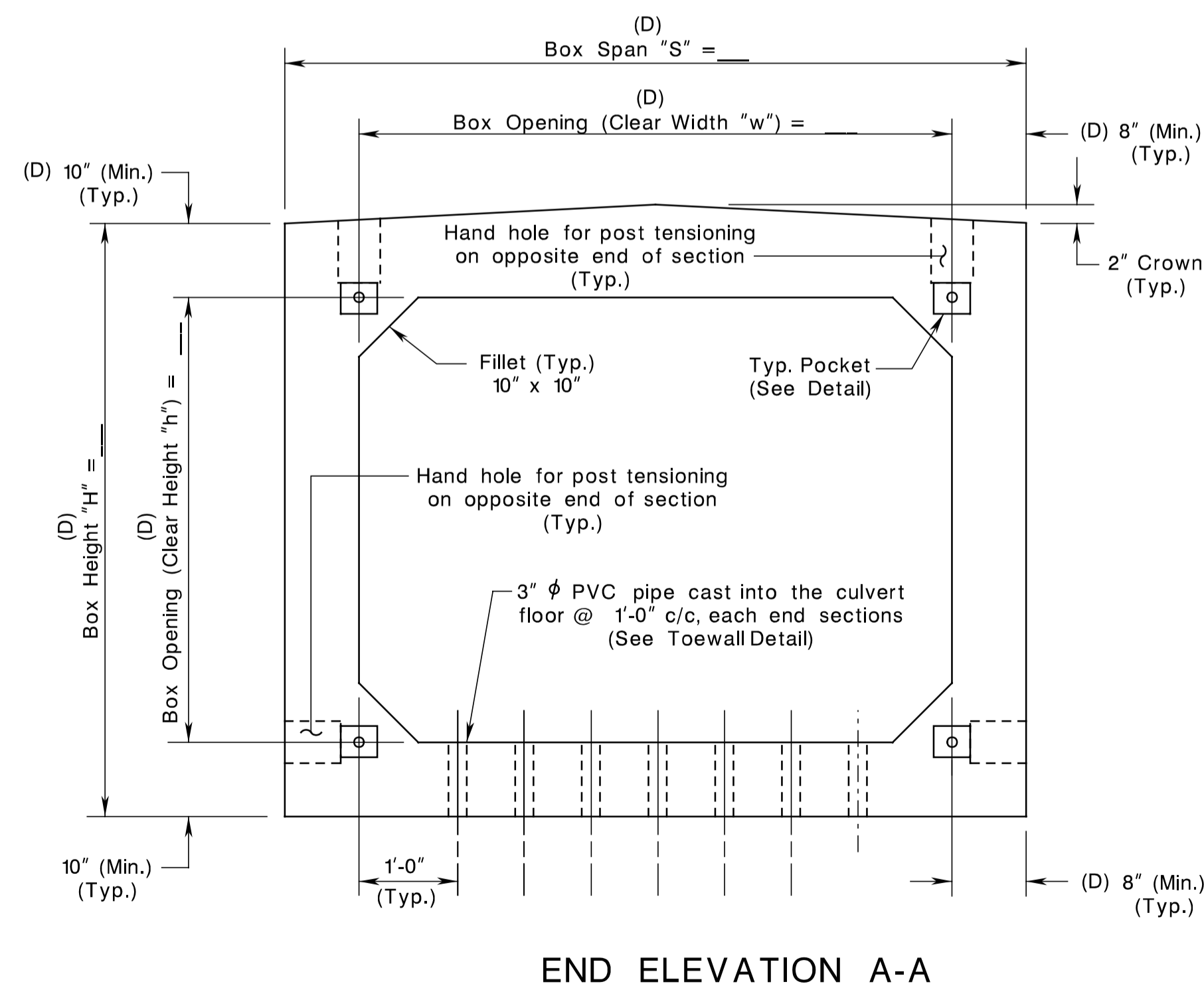
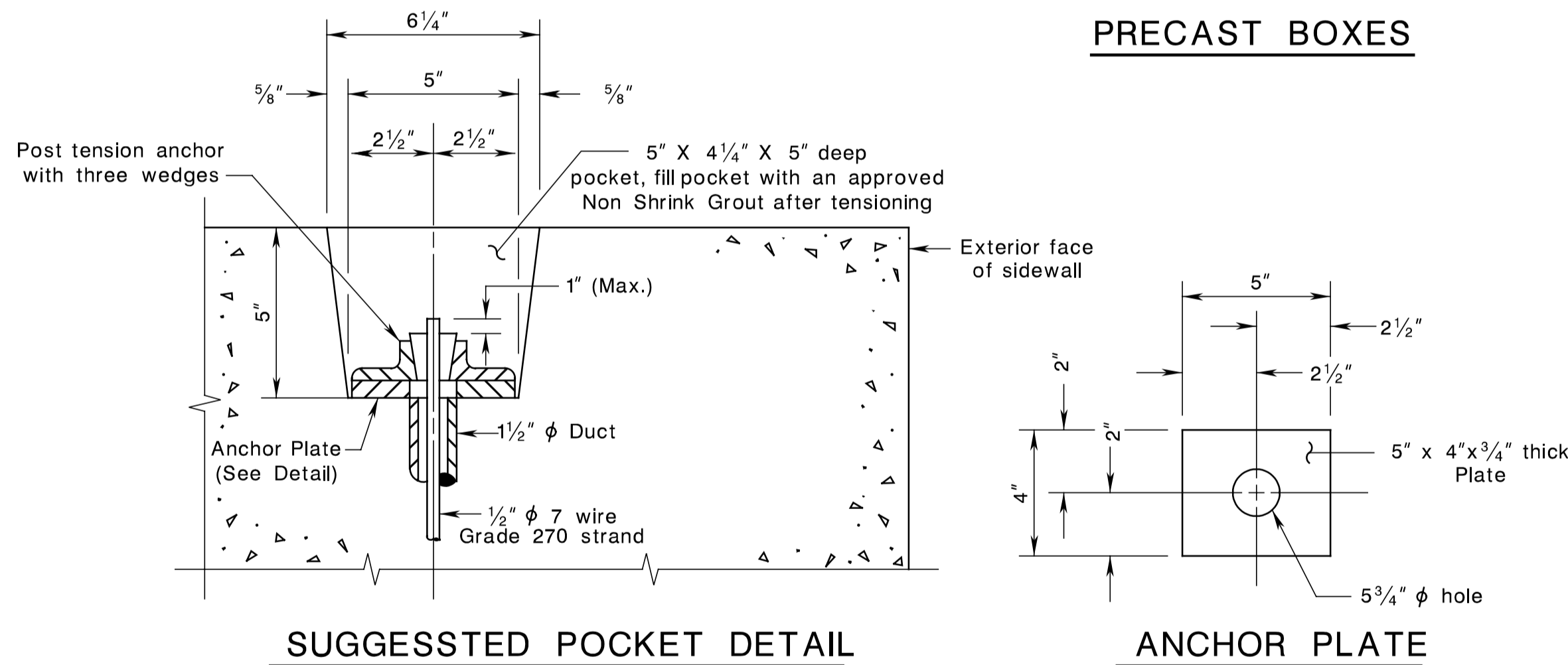


STATE	FEDERAL PROJECT NO.	SHEET	TOTAL SHEETS
N. J.			
STRUCTURE NO.			
STRUCTURE NAME			



PRECAST BOXES



NOTES:

1. Fabricator shall provide all details for post-tension connections.
2. Fabricator shall show post-tensioning procedures including stressing sequence steps.
3. Snug fit all joints before post-tensioning.
4. After tensioning, the exposed ends of the ties shall be removed so that no part of the ties, or of the end fittings, extend beyond a point 1" inside the anchorage pocket.
5. After stressing, grout all strand voids using an approved compound.
6. Provide seals or gaskets around the ducts at the joints to make the joints grout.
7. All post-tensioning must be witnessed and approved by the Engineer.
8. After post-tensioning is approved, cut strands to provide a minimum of 2 1/4" clear from outside face of concrete, coat anchorage and strands with coal tar epoxy and coat recess with epoxy bonding compound and fill with non-shrink grout. The use of epoxy bonding compound shall be in conformance with NJDOT Standard Specifications, Subsection 518.04 Subpart 2(a).
9. Post-tension and grout before backfilling and placing traffic over the box. Allow grout to achieve minimum strength before backfilling.

SECTION SCHEDULE

SECTION NO.	NO. REQUIRED	Q DIMENSION	TOTAL LENGTH	WEIGHT LBS	CUBIC YARDS
1					
2					
3					
4					
5					
6					
TOTAL					

NOTE TO THE DESIGNER:

The designer shall complete all the title block information and items designated with (D) prior to including any PLATES into the contract plans.



NEW JERSEY DEPARTMENT OF TRANSPORTATION
BUREAU OF STRUCTURAL ENGINEERING

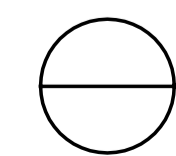
SINGLE CELL PRECAST R.C. BOX CULVERT POST-TENSIONING DETAILS

ROUTE SECTION

MUNICIPALITY COUNTY

SCALE: _____

SHEET NO. _____ OF _____



DESIGN SECTION		JOB NO.	
DES. BY	CHK. BY		
DWN. BY	CHK. BY		
EST. BY	CHK. BY		
SPECS. BY			
IN CHARGE OF _____			

date= 18-FEB-2005 15:47

scale= 0.084657:1.000000

pen table= E:\System\plott\PLA\Non-Roadway\bridge.tbl

ID= 16412300