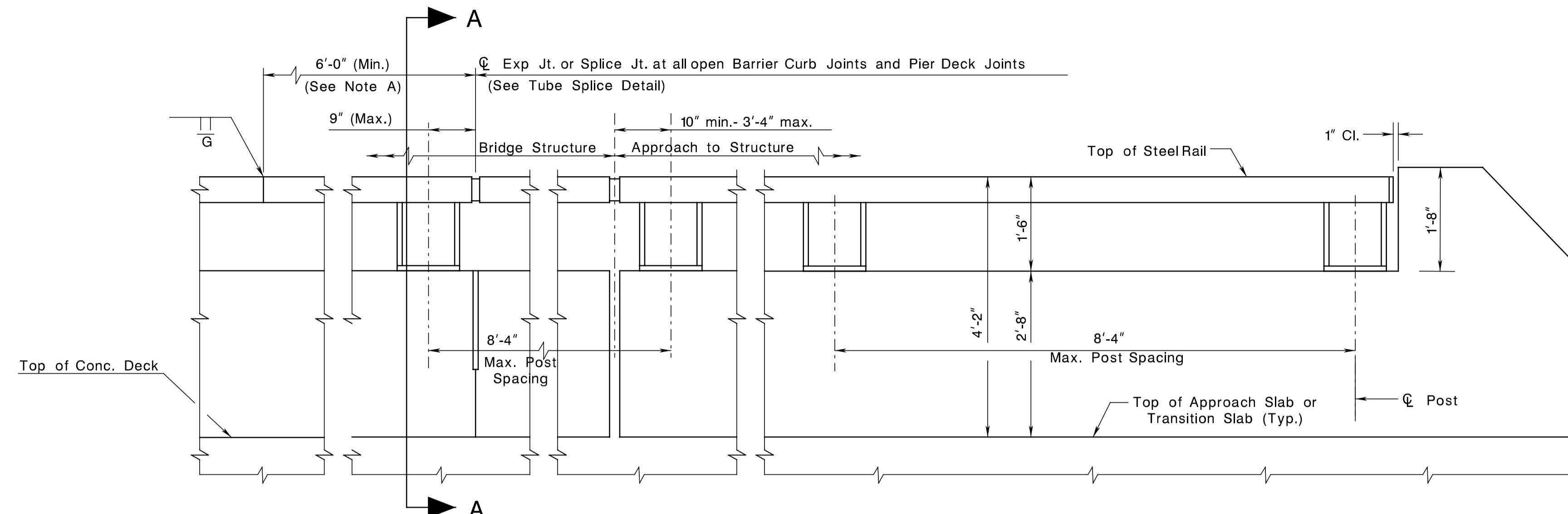
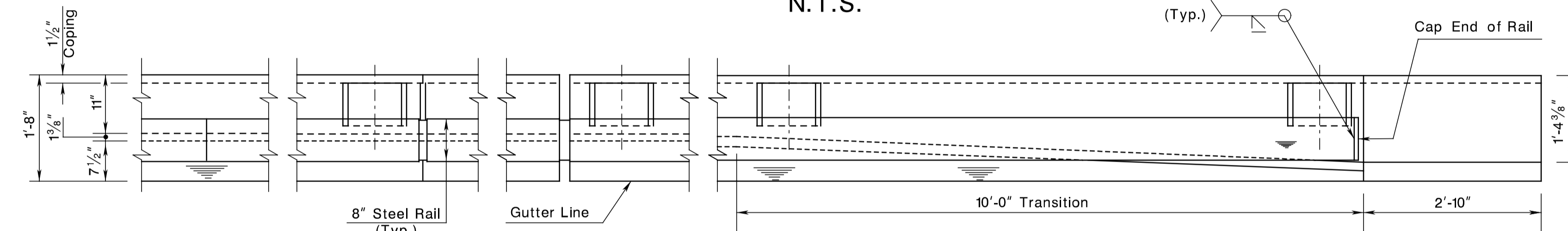


STATE	FEDERAL PROJECT NO.	SHEET	TOTAL SHEETS
N. J.			
STRUCTURE NO.			
STRUCTURE NAME			



PARAPET ELEVATION VIEW

N.T.S.



PARAPET PLAN VIEW

NOTE:

A. One shop splice per panel permitted with minimum 85 percent penetration. Weld flaws resulting in no less than 60 percent penetration are permissible in the upper and lower 90 degree quadrants of the members. The weld may be square groove, double vee groove, or single groove and shall be ground smooth.

GENERAL NOTES:

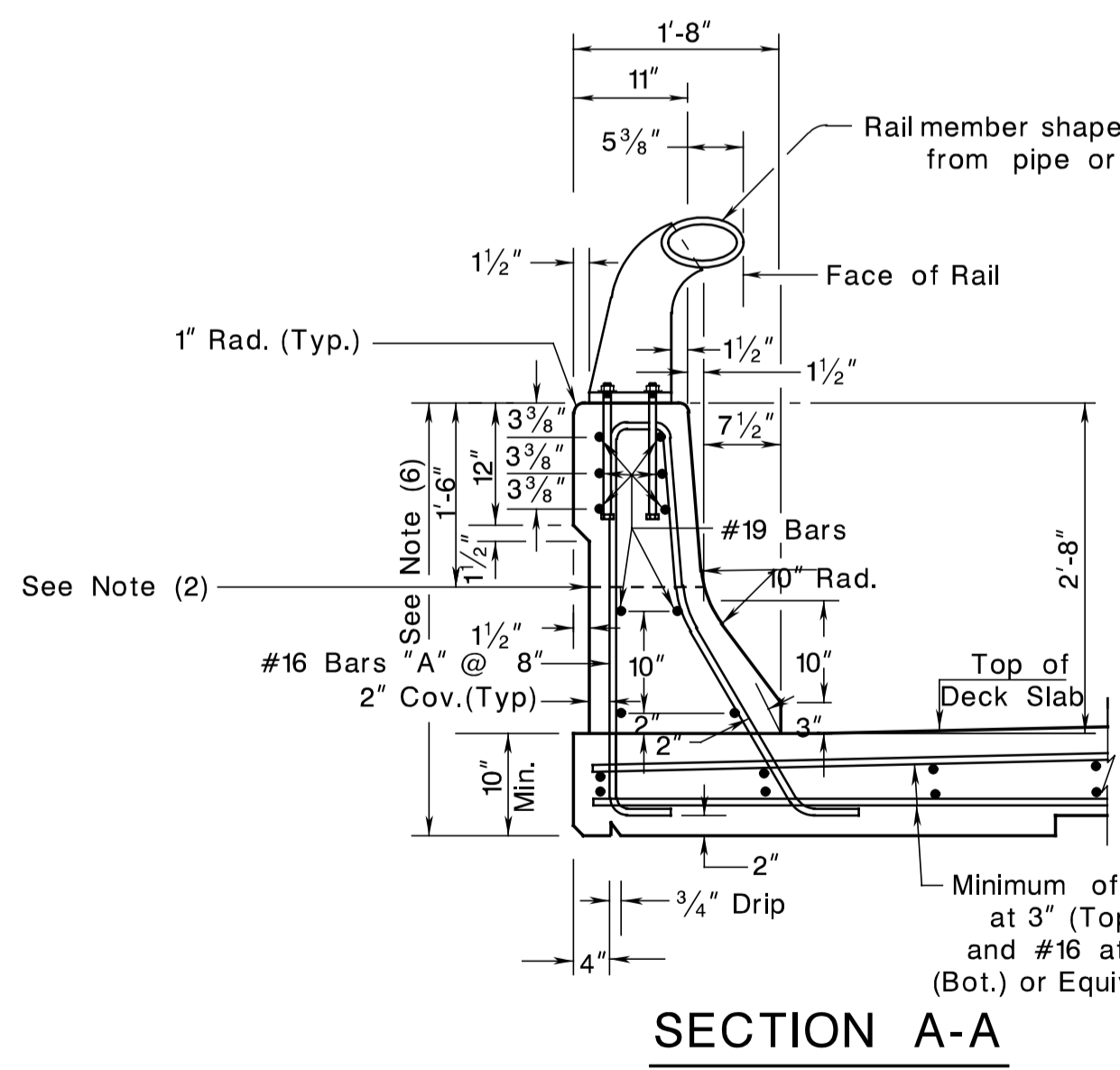
- 3/16" open deflection joint shall be provided in parapets at intervals not exceeding 20'-0" and contraction joints shall be provided at the midpoint between the open joints.
- The 3/16" open joint shall stop at the line indicated and a contraction joint shall be provided below that line.
- Full depth joints shall be provided at the transverse deck joint opening width. The full depth joint opening width shall equal the transverse deck joint opening width.
- All reinforcement bars in parapet shall be corrosion protected. (Refer to section 26 of this manual for types of corrosion protected reinforcement steel that can be used)
- Permanent metal stay-in-place forms not permitted in the deck overhang area.
- Fascia rustication and/or configuration as per specifications.
- For additional reinforcement that is required to prevent concrete cracking in the overhang portions of the deck slab see Detail 1 in Standard Drawing 2.2-4.
- All steel components including bolts, nuts, and washers shall be galvanized unless otherwise shown on the plans.
- Anchor bolts shall be 7/8" dia. ASTM F1554 bolts with one hex nut and one 2 1/4" O.D. washer (3/16" min. thickness) plus one 1 3/4" O.D. hardened steel washer (1/8" Min. thickness) at each bolt. Nuts shall conform to A563 requirements.
- The pipe may be slotted to fit plates in lieu of cutting plates to fit pipe, except plates adjacent to tube splice.
- The plates shall be AASHTO M 270, Grade 36.
- The payment for the railing shall be made under the pay item "HEAVY TRUCK PARAPET STEEL RAILING".

TUBE & SLEEVE MEMBERS

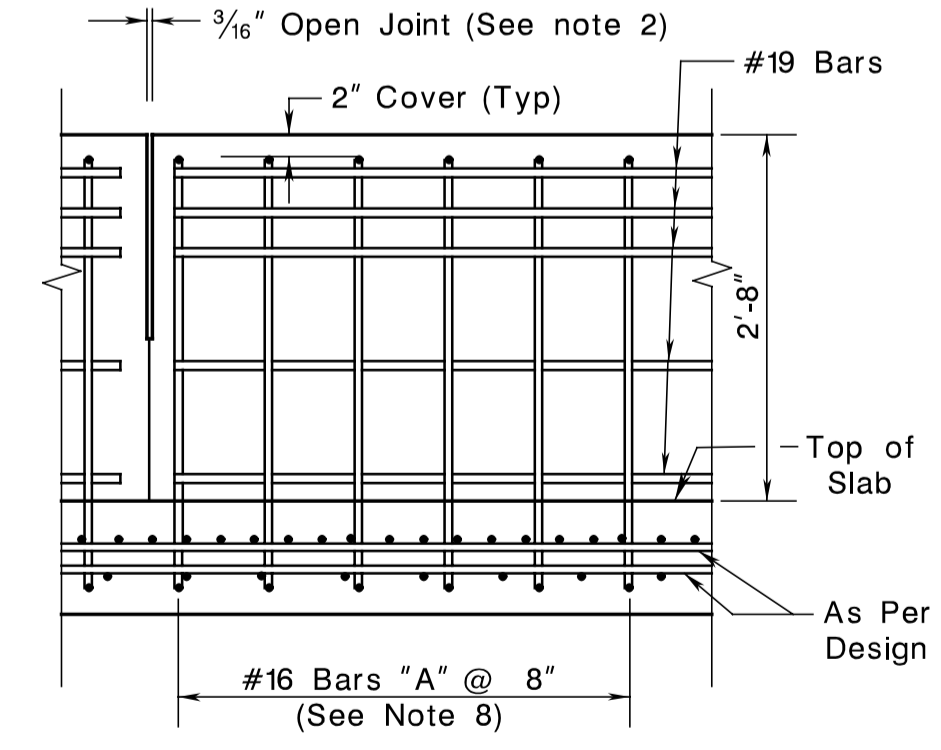
8" x 4 7/8" Ellipse	Splice Member	
Material	Material	Thickness
6" Dia Std Pipe ASTM-A53 E or S Gr B)	ASTM-A53-B	0.353"
	A36 or A500 Gr B	0.339"
6 7/8" O.D. x 0.188" Tube API-5LX52	API-5LX52	0.224"
	ASTM-A53-B	0.339"
	A36 or A500 Gr B	0.325"
	API-5LX52	0.216"

NOTES:

- Other sections of equal or greater strength are acceptable for sleeves.
- The major and minor diameters of the rail member may vary +/- 0.1875 inches from plan dimension. However, the difference between the outside diameters of the sleeve and the inside diameters of the rail shall not exceed 0.125 inches along the major or minor axis. Gaps exceeding this amount up to 0.25 inches are permissible along the 45° axes of the sleeves.

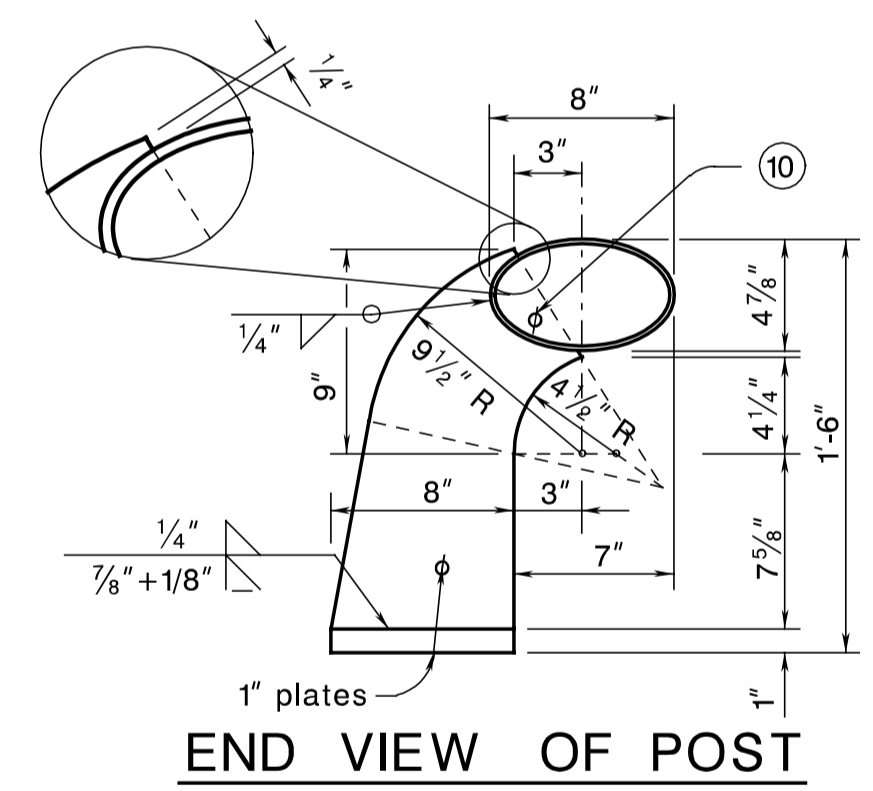


SECTION A-A

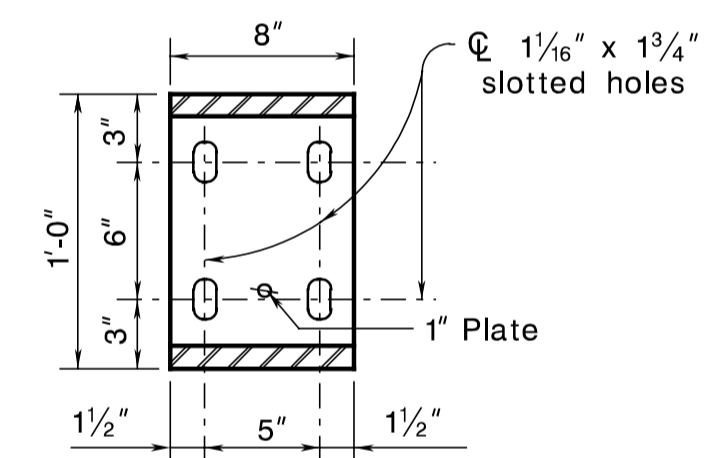


ELEVATION

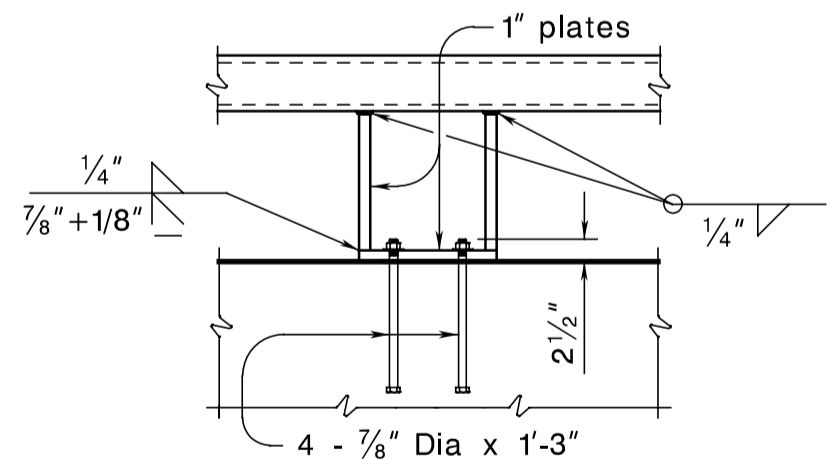
(Showing Reinforcement)



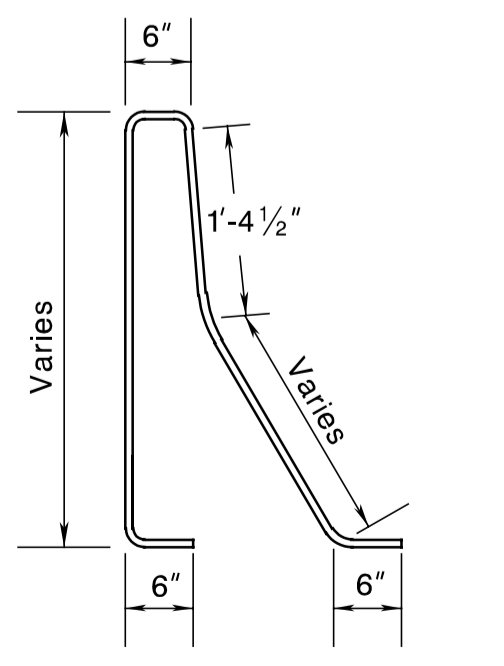
END VIEW OF POST



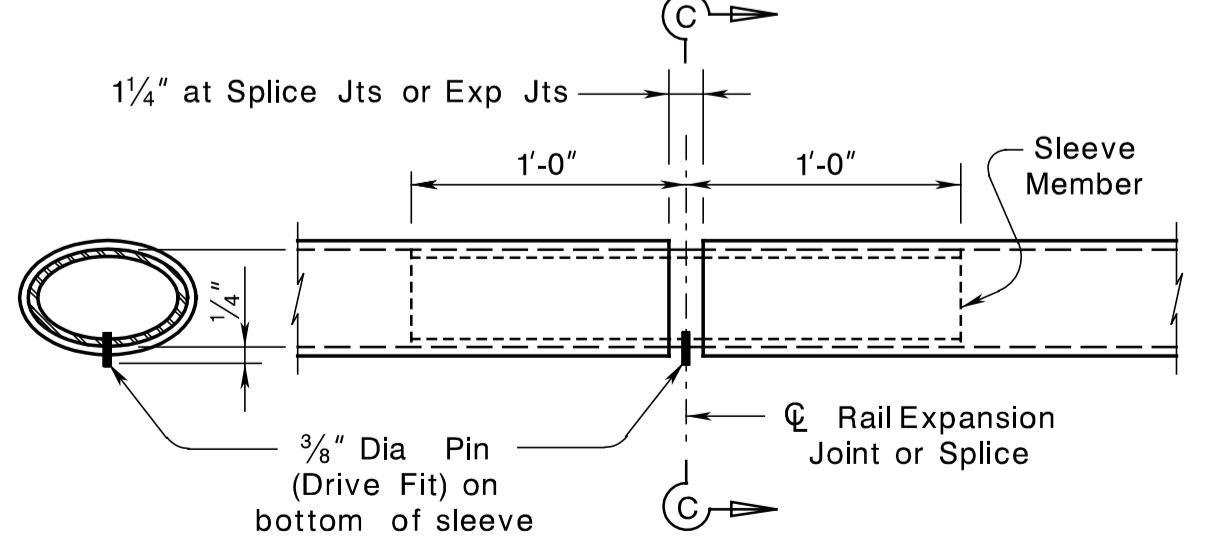
BASE PLATE DETAIL



POST ELEVATION



BAR "A" BENDING DETAIL



SECTION C-C AT SPLICE OR EXP JTS

TUBE SPLICE DETAIL

CONTROL SECTION	JOB NO.
DES. BY	CHK. BY
DWN. BY	CHK. BY
EST. BY	CHK. BY
SPECS. BY	
IN CHARGE OF	

BDC04MB-01

**STANDARD DRAWING PLATE 2.2-3**

NEW JERSEY DEPARTMENT OF TRANSPORTATION  
BUREAU OF STRUCTURAL ENGINEERING

**4'-2" HIGH  
HEAVY TRUCK PARAPET**

ROUTE: SECTION:

SCALE: NONE

BRIDGE SHEET NO. B OF B

pen table = E:\System\pilot\BTLs\Non-Roadway\bridge\tbl  
scale = 0.084657:1.000000  
date = 18-FEB-2005 15:06  
ID = 1641230