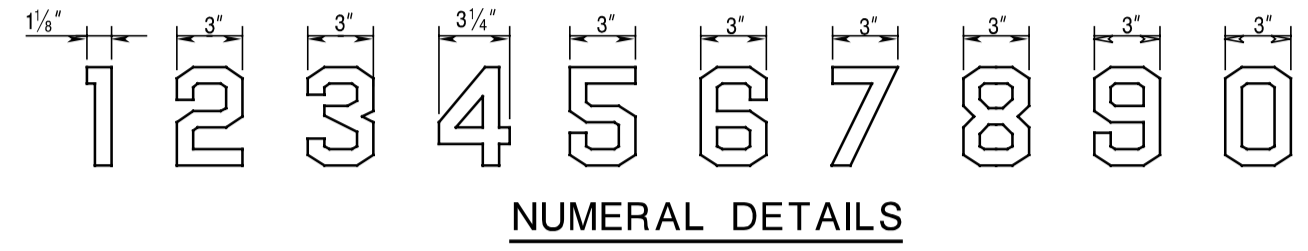
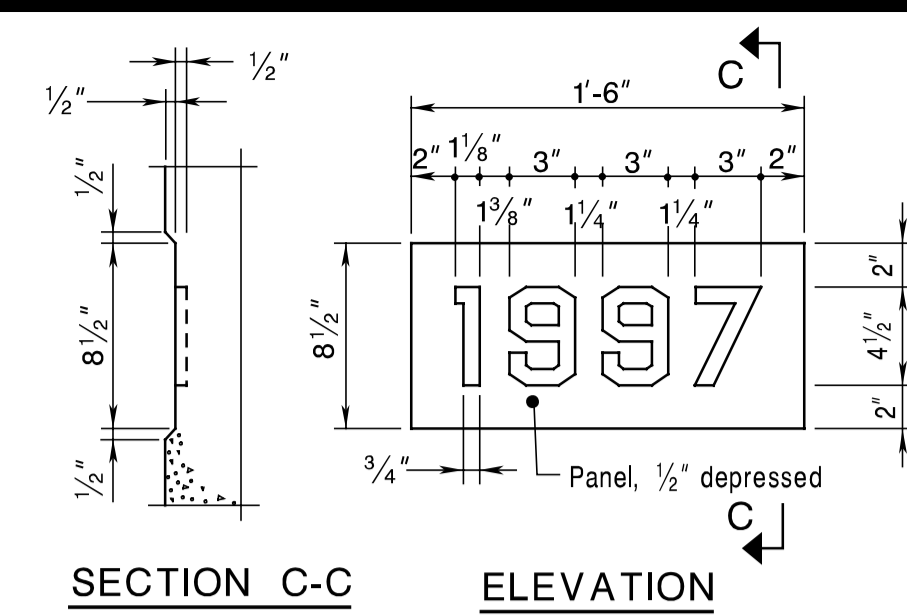
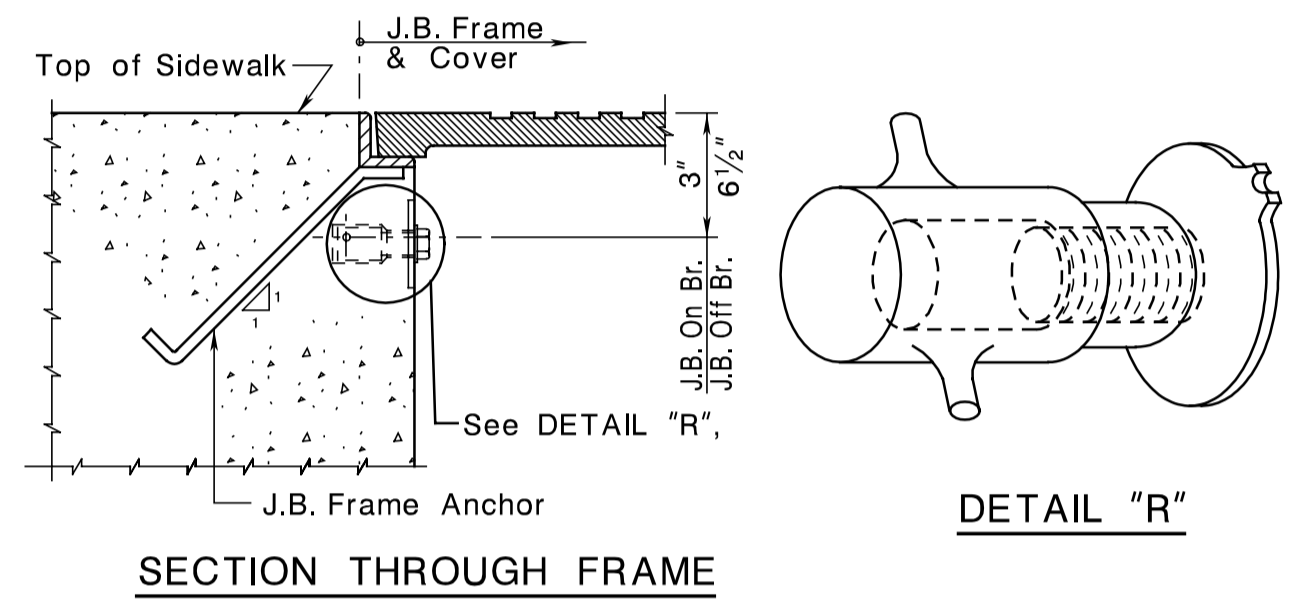


STATE	FEDERAL PROJECT NO.	SHEET	TOTAL SHEETS
N. J.			
STRUCTURE NO.			
STRUCTURE NAME			

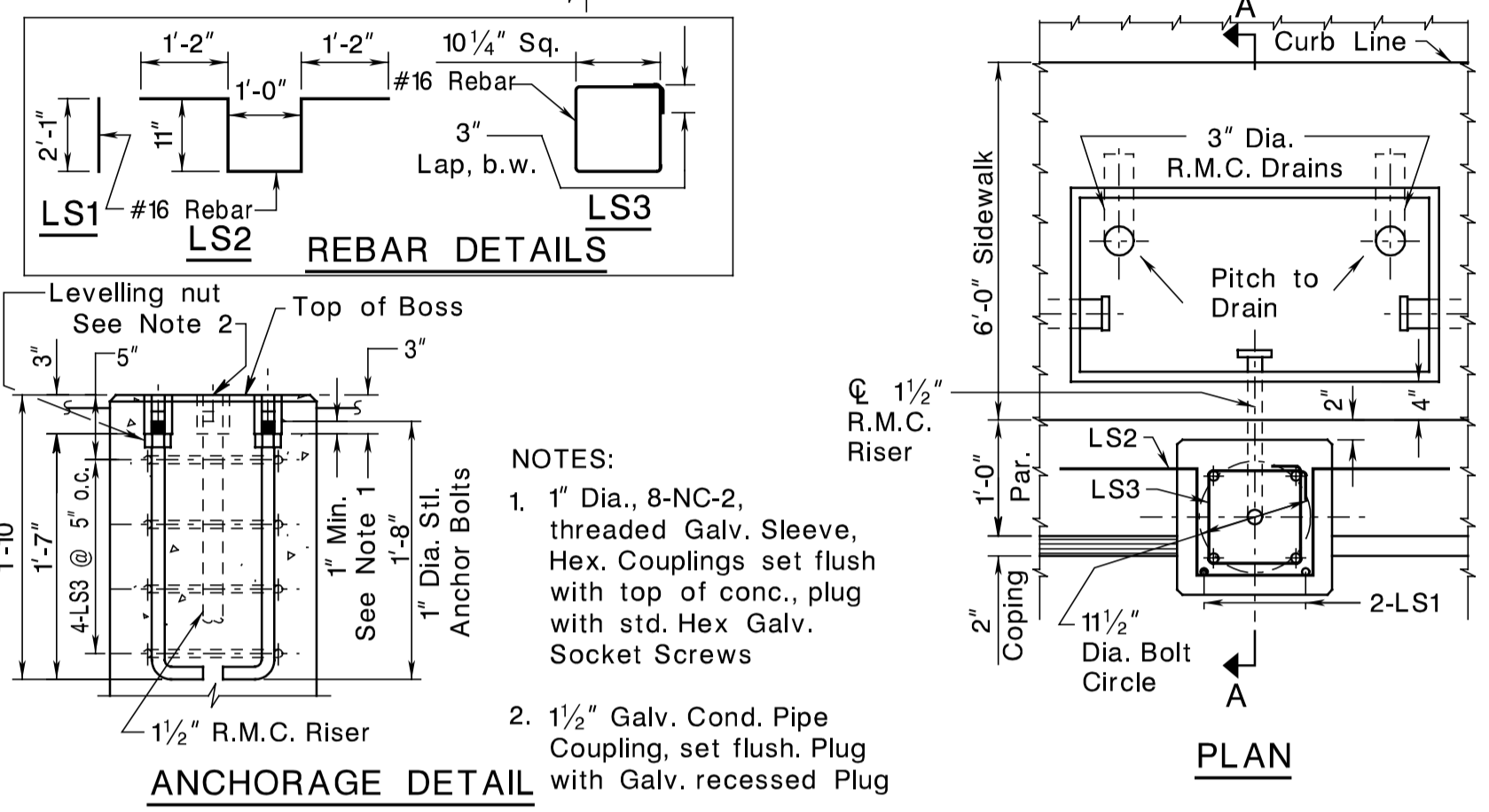
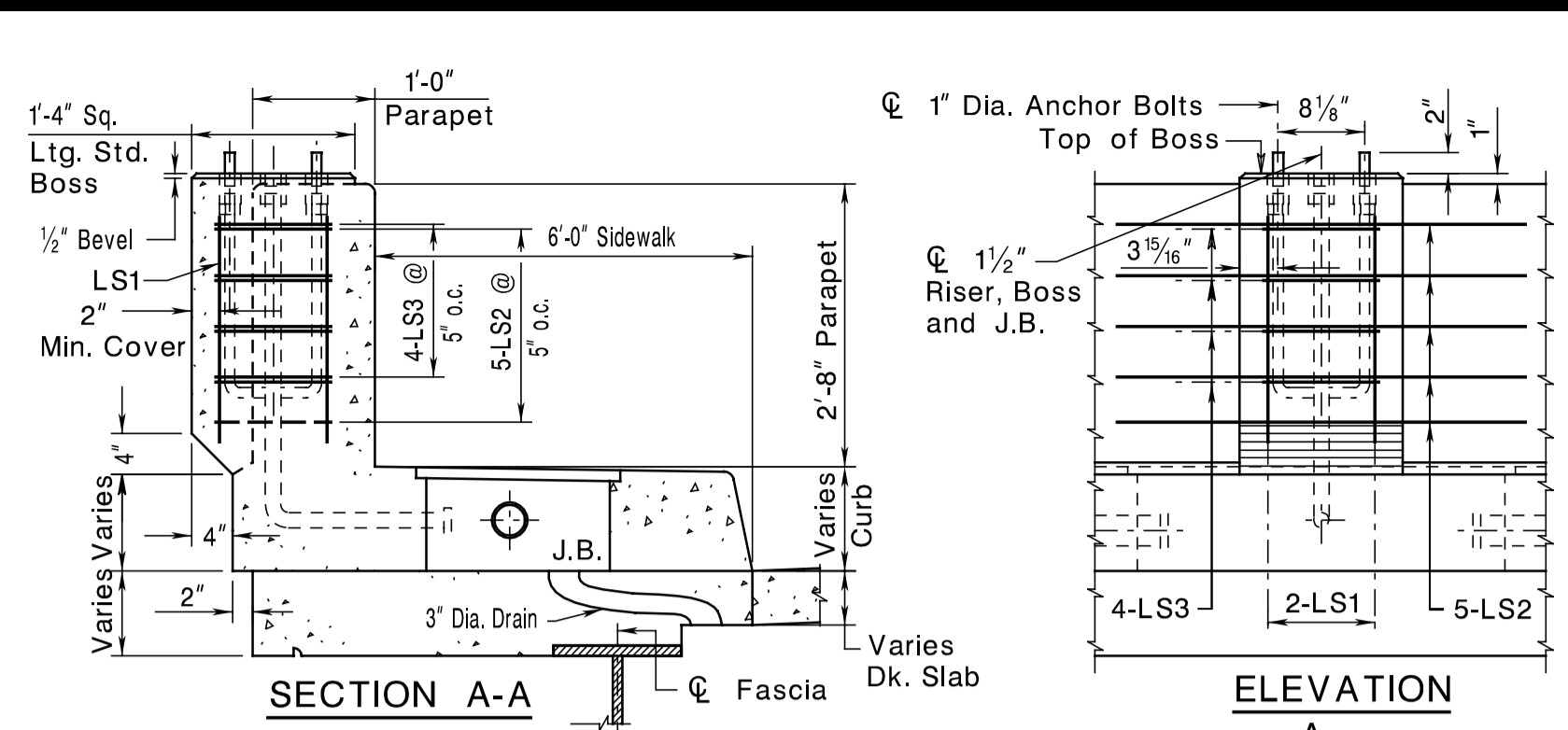
- NOTES:
- DATE shall be Year of Completion of Structure.
 - NUMERALS proposed for use shall be approved by the Engineer.
 - COST of the Panel shall be included in the Price bid for Concrete containing the Panel.
 - Two (2) Panels required.



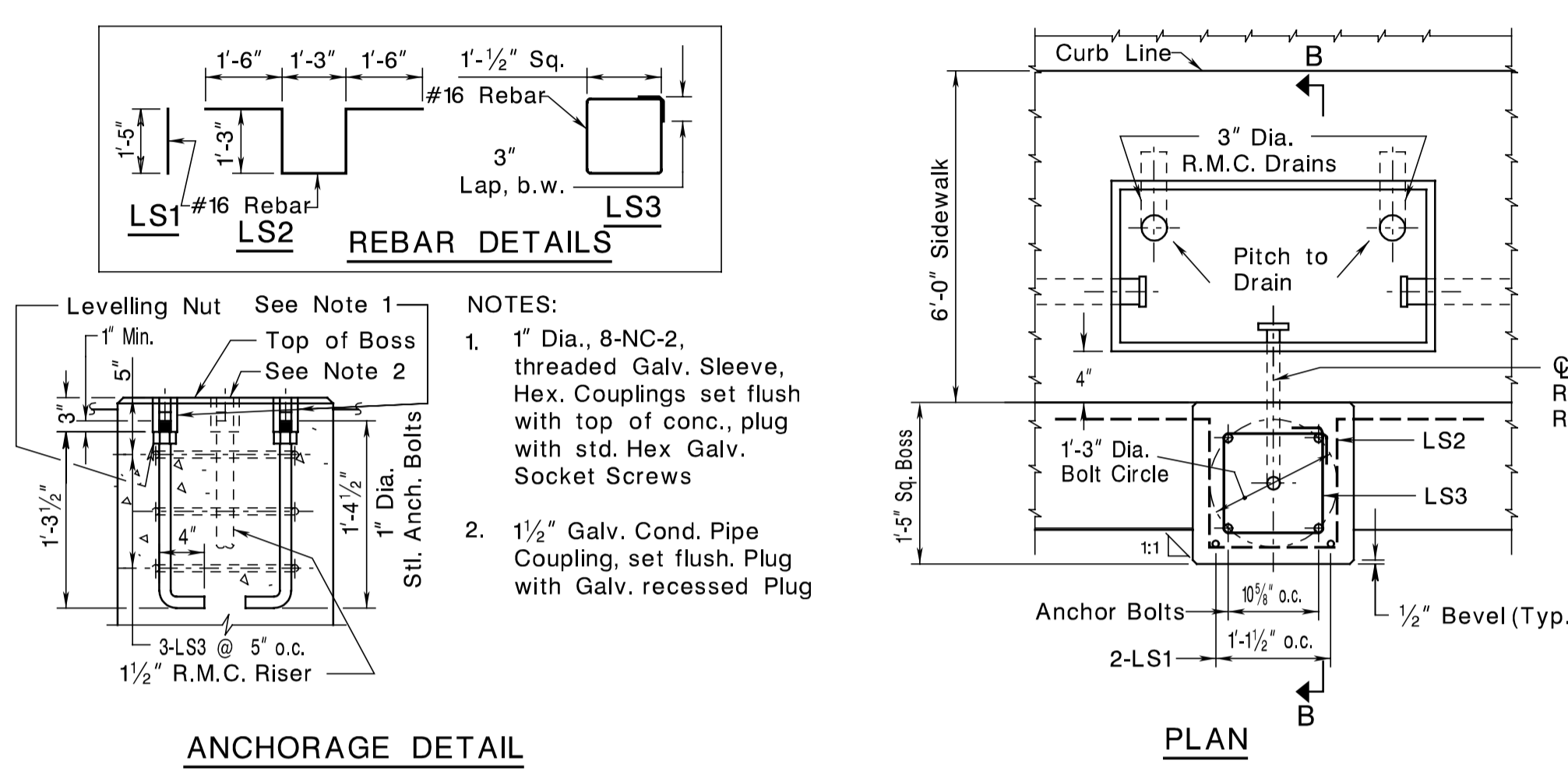
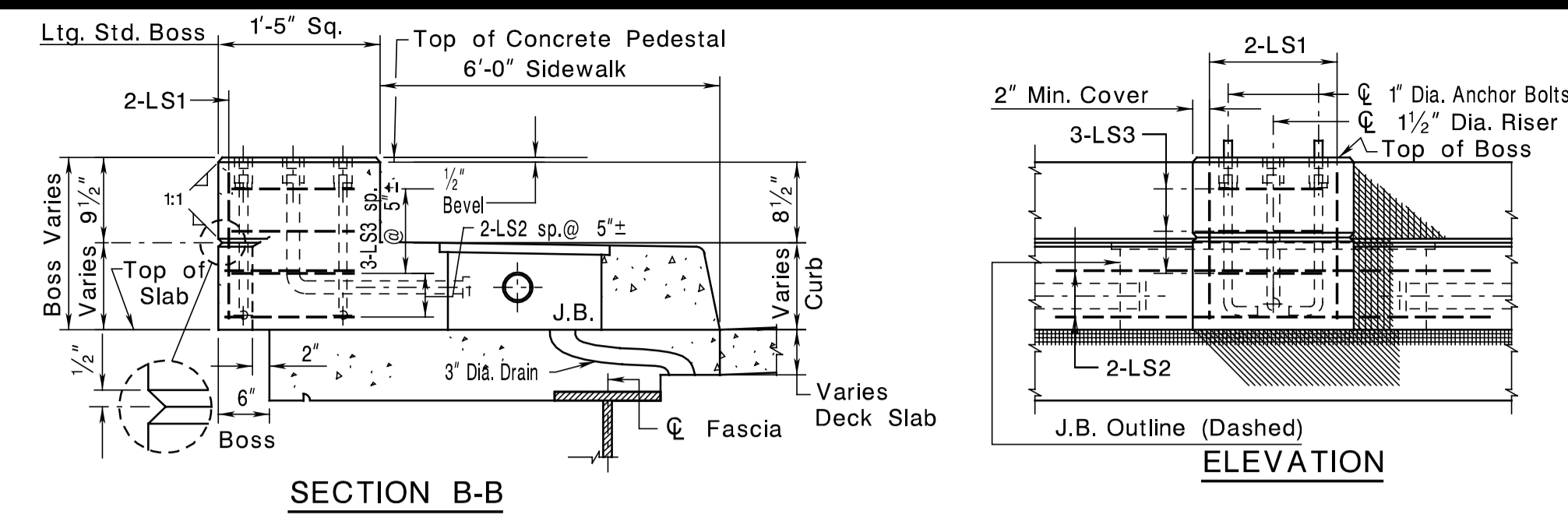
DETAILS OF NUMERAL PANEL



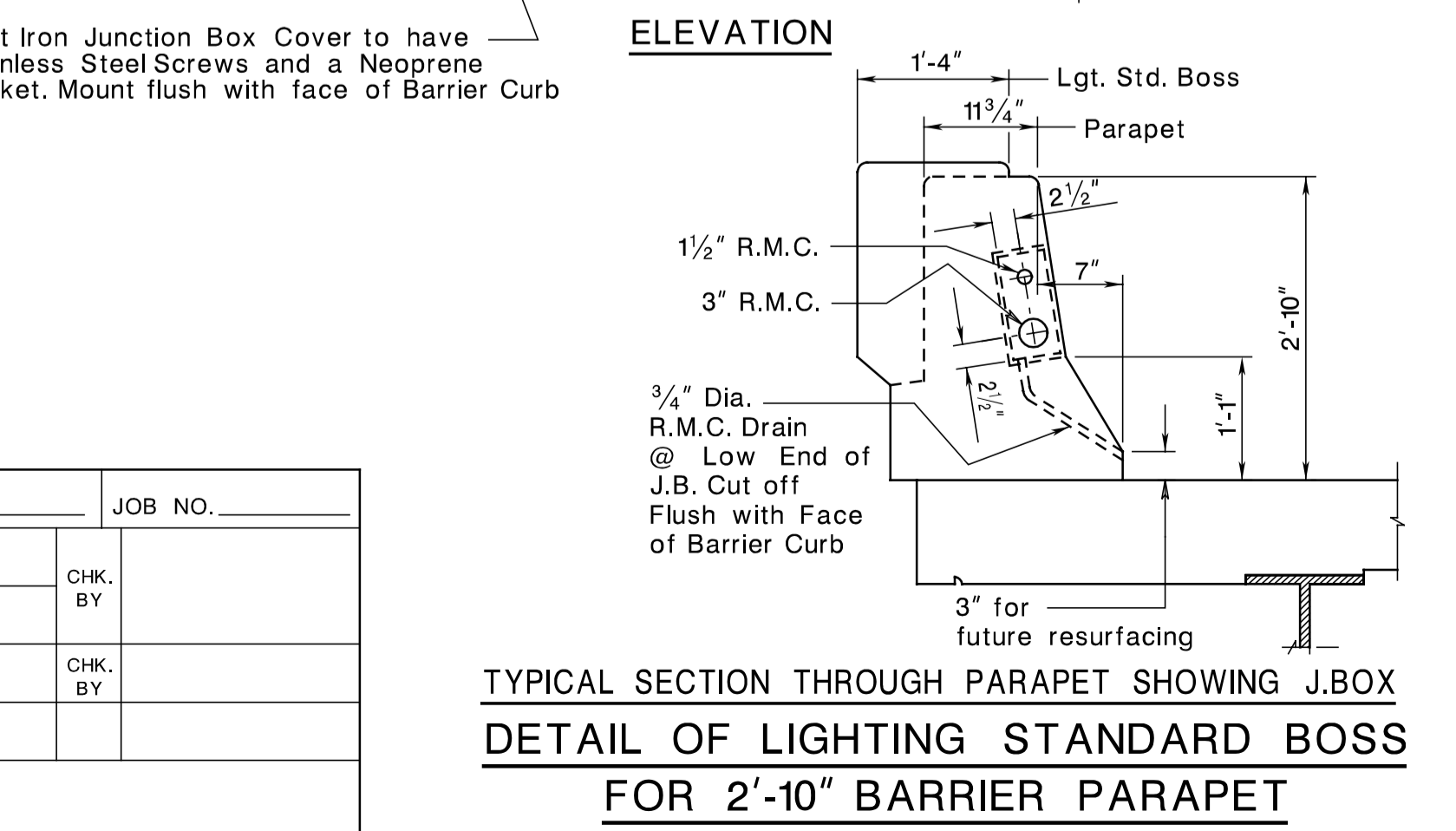
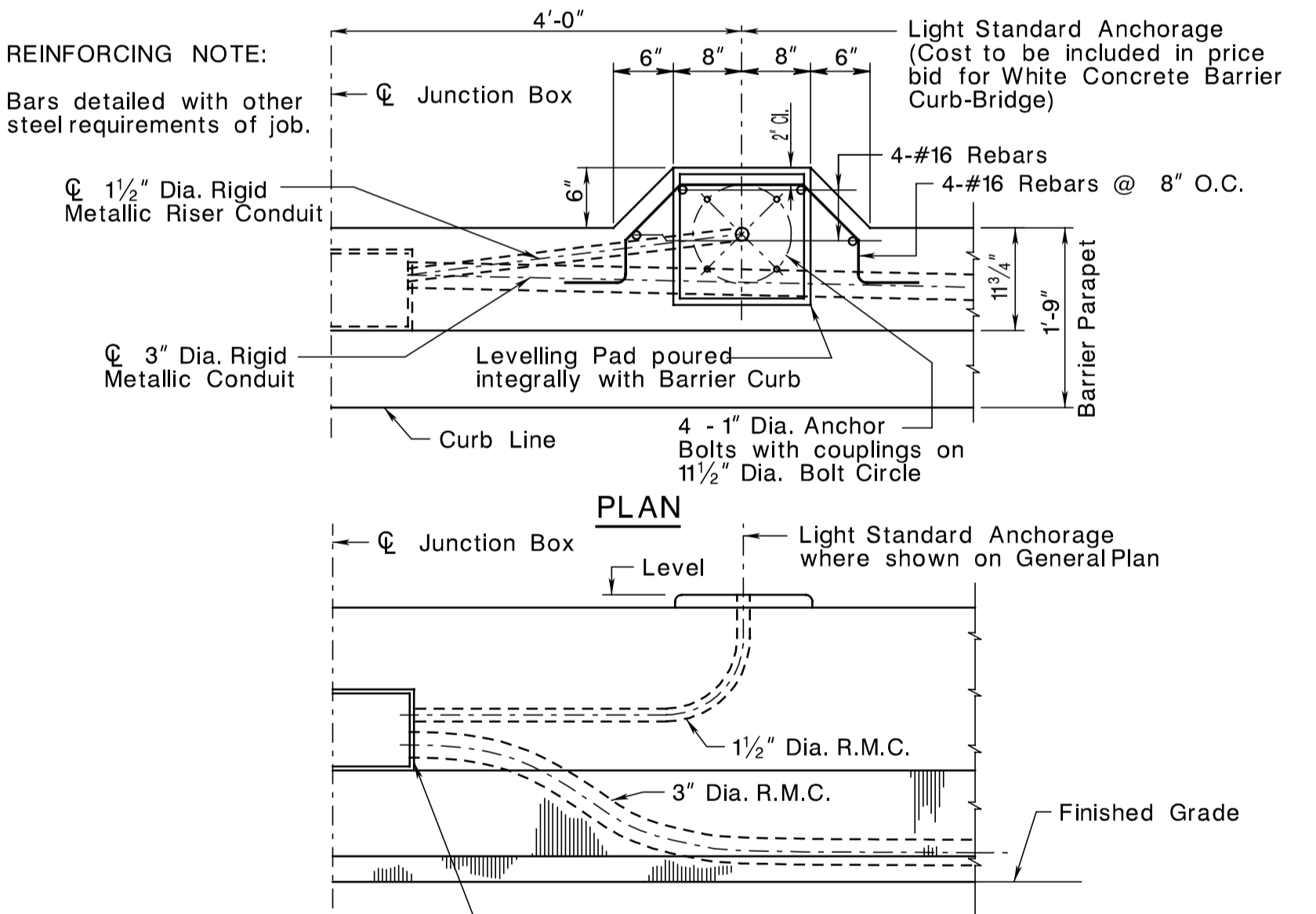
DETAILS OF ALTERNATE CABLE RACK SUPPORT



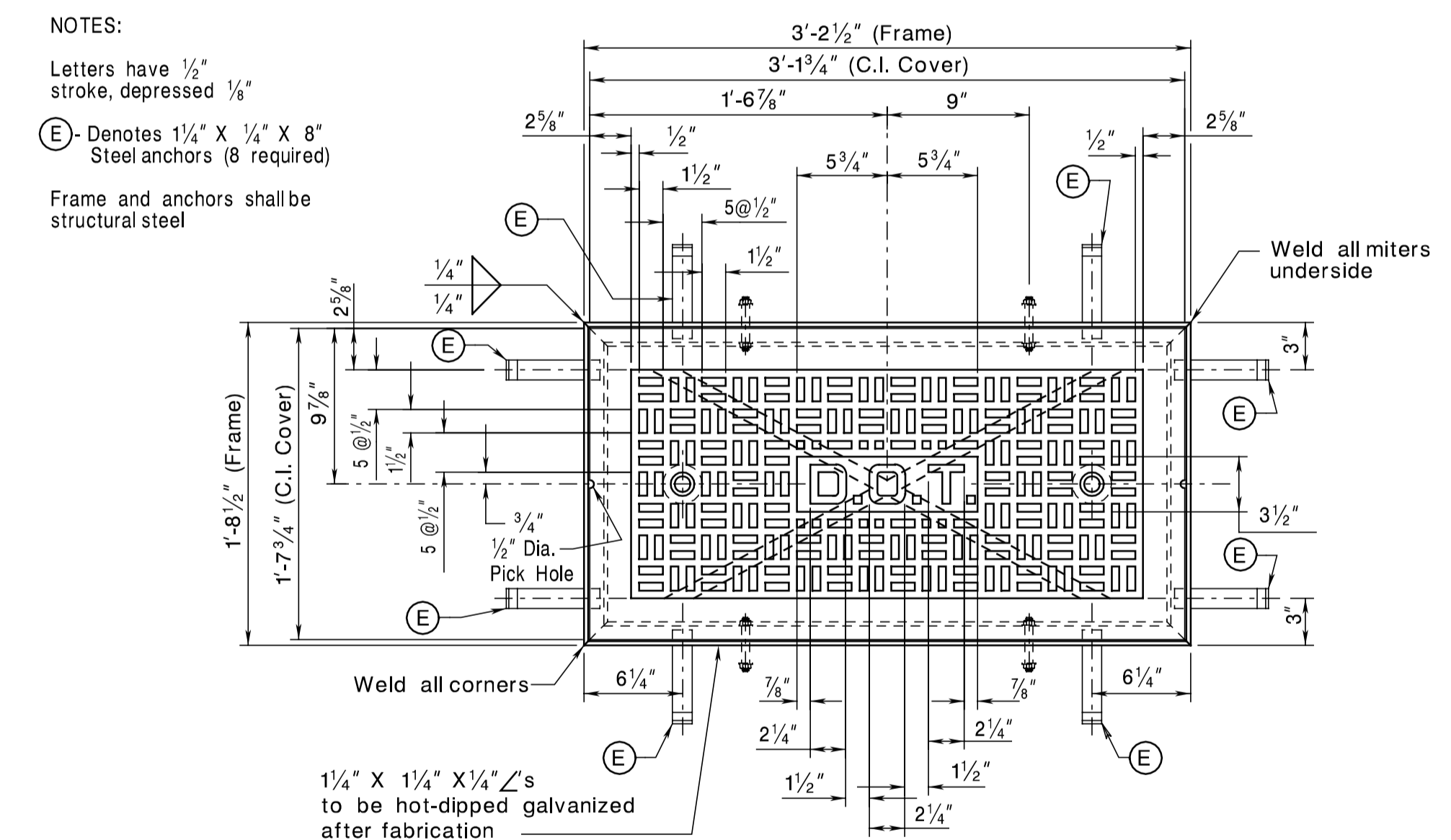
DETAILS OF LIGHTING STANDARD BOSS ON 2'-8" PARAPET



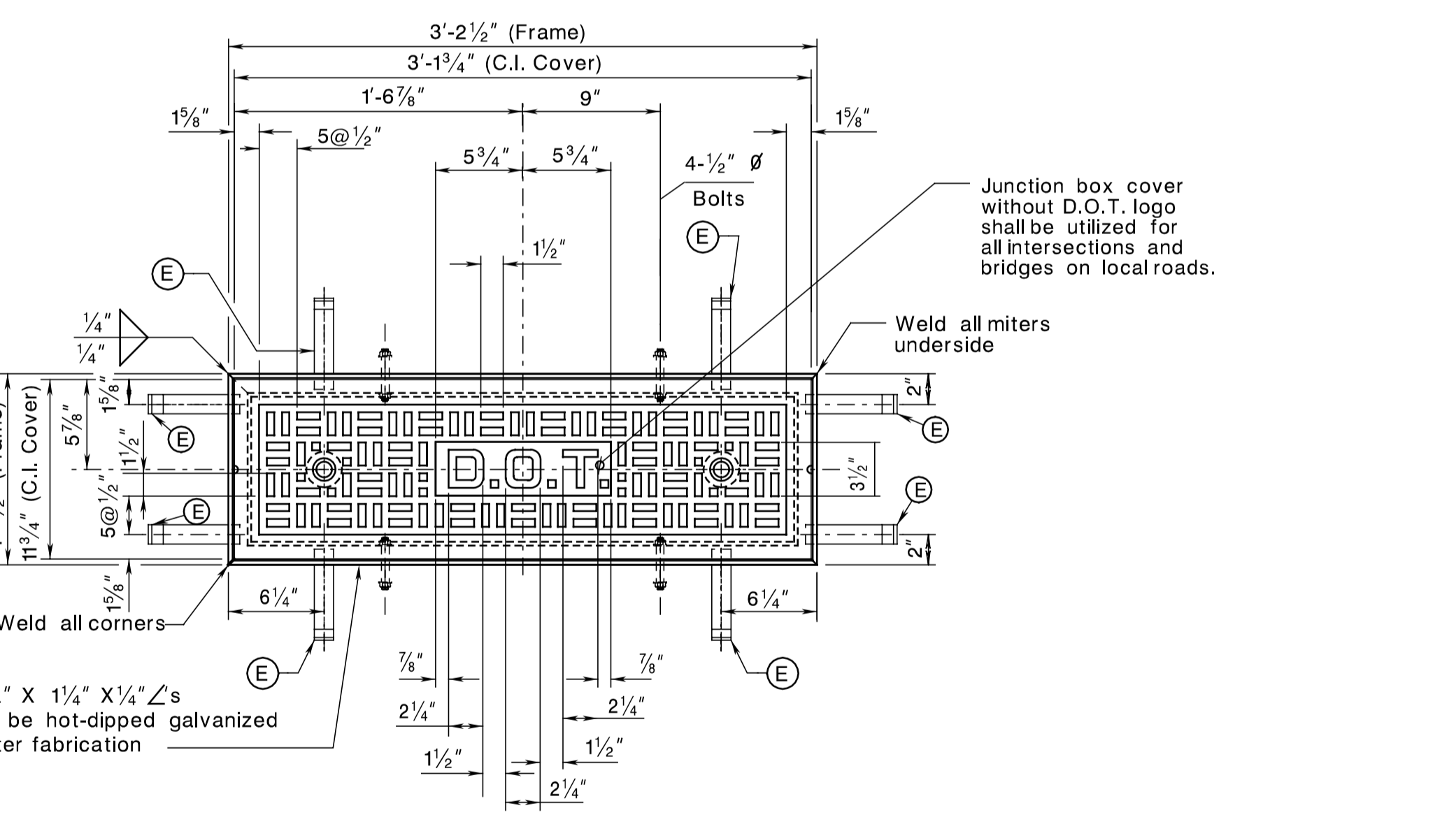
DETAILS OF LIGHTING STANDARD BOSS ON 8 1/2" PEDESTAL



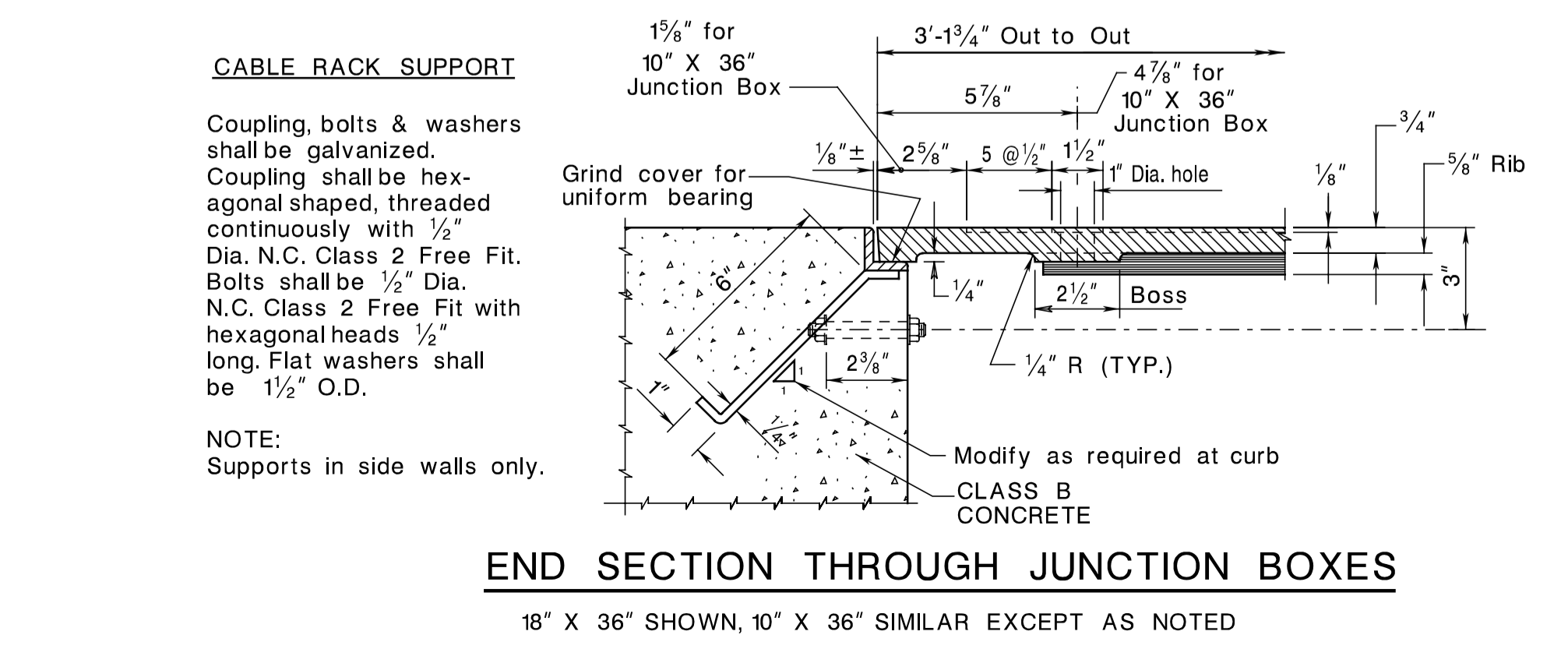
TYPICAL SECTION THROUGH PARAPET SHOWING J.BOX
DETAIL OF LIGHTING STANDARD BOSS FOR 2'-10" BARRIER PARAPET



PLAN-FRAME AND COVER FOR 18" X 36" JUNCTION BOX



PLAN-FRAME AND COVER FOR 10" X 36" JUNCTION BOX



END SECTION THROUGH JUNCTION BOXES
18" X 36" SHOWN, 10" X 36" SIMILAR EXCEPT AS NOTED

BDC04MB-01

STANDARD DRAWING PLATE 2.6-2

NEW JERSEY DEPARTMENT OF TRANSPORTATION
BUREAU OF STRUCTURAL ENGINEERING

TYPICAL DETAILS NO. 2

ROUTE: SECTION:

SCALE: NONE

BRIDGE SHEET NO. B OF B

pen table = E:\z_Systems\pdr\BTLA\Non-Roadway\bridge.tbl
scale = 0.084657:1.000000
date = 18-FEB-2005 15:29
ID = 16412300

CONTROL SECTION	JOB NO.
DES. BY	CHK. BY
DWN. BY	BY
EST. BY	CHK. BY
SPECS. BY	
IN CHARGE OF	