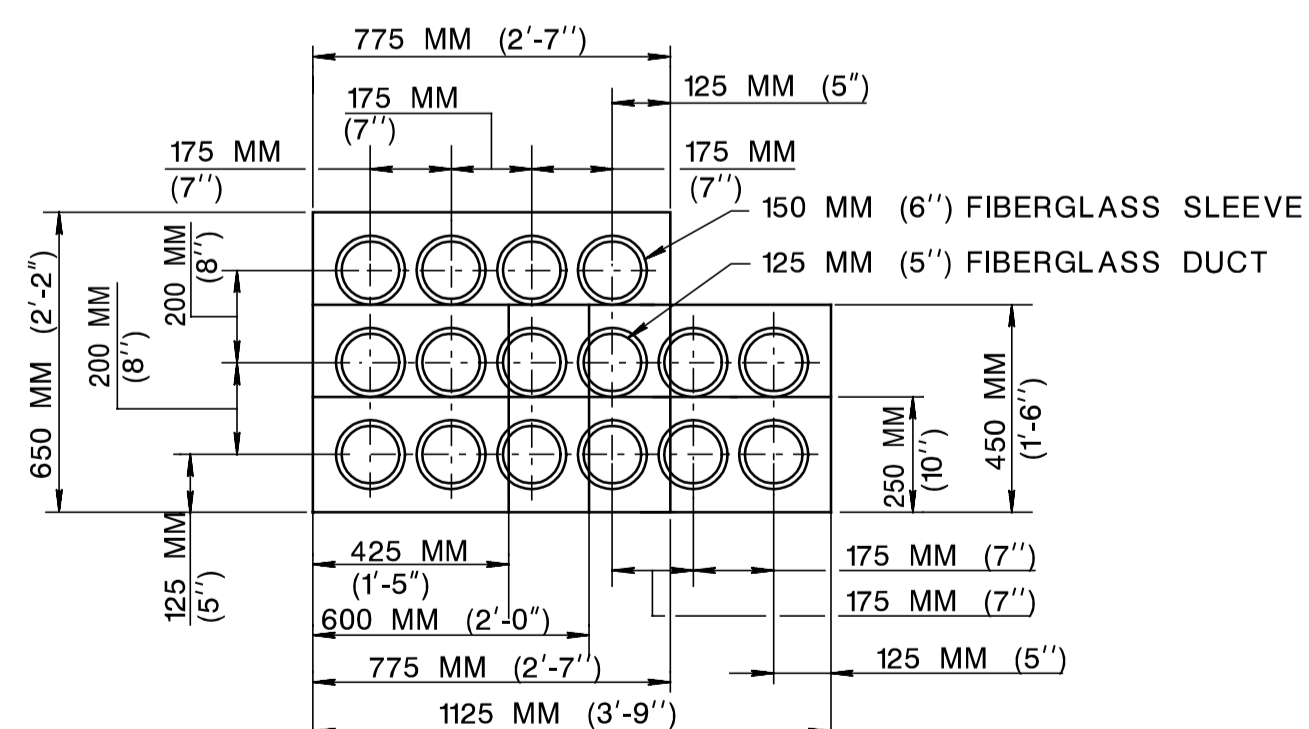
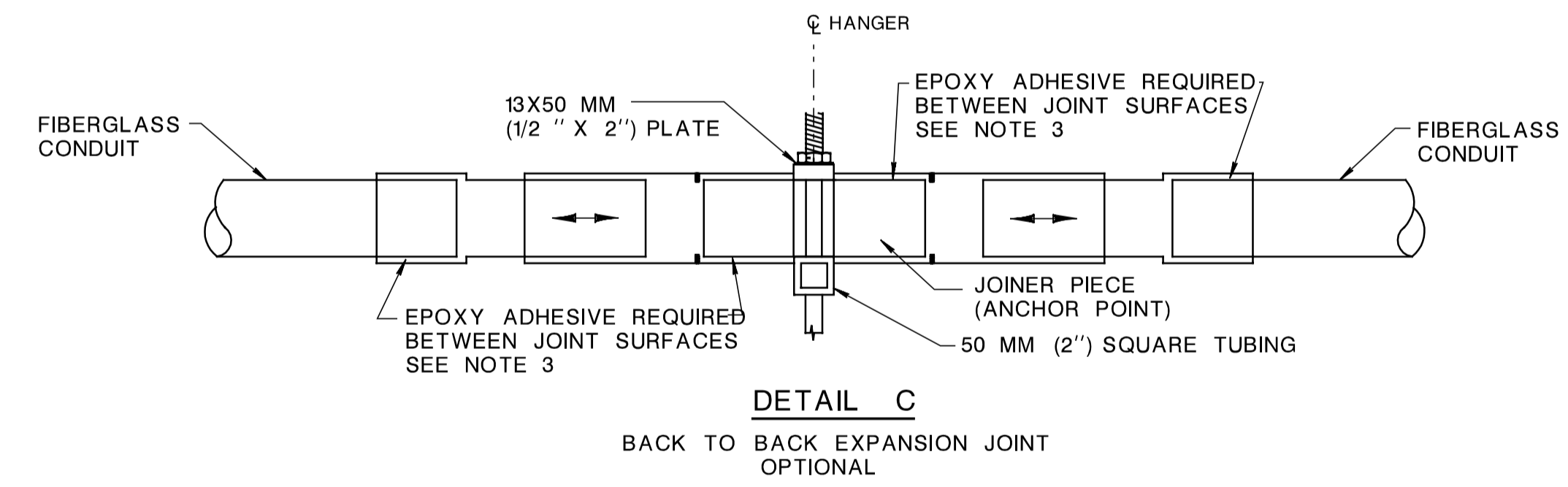
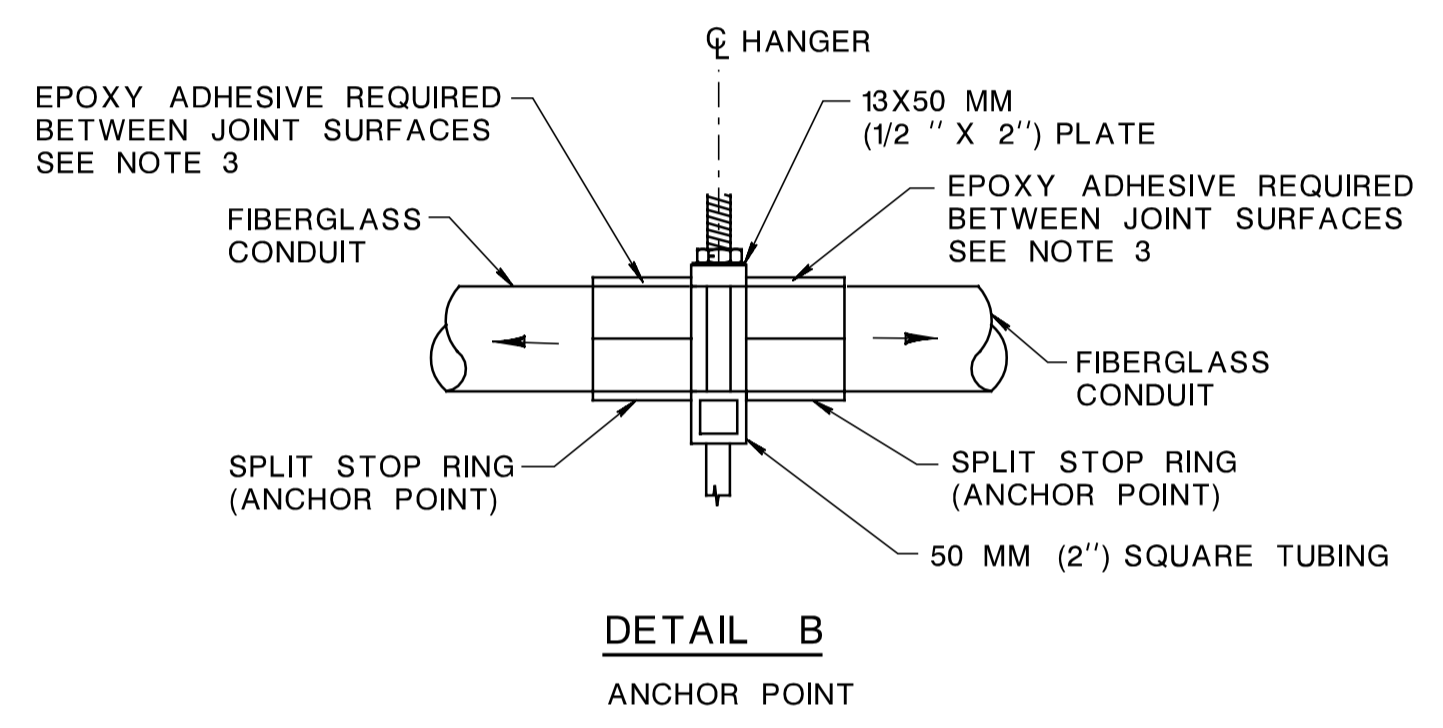
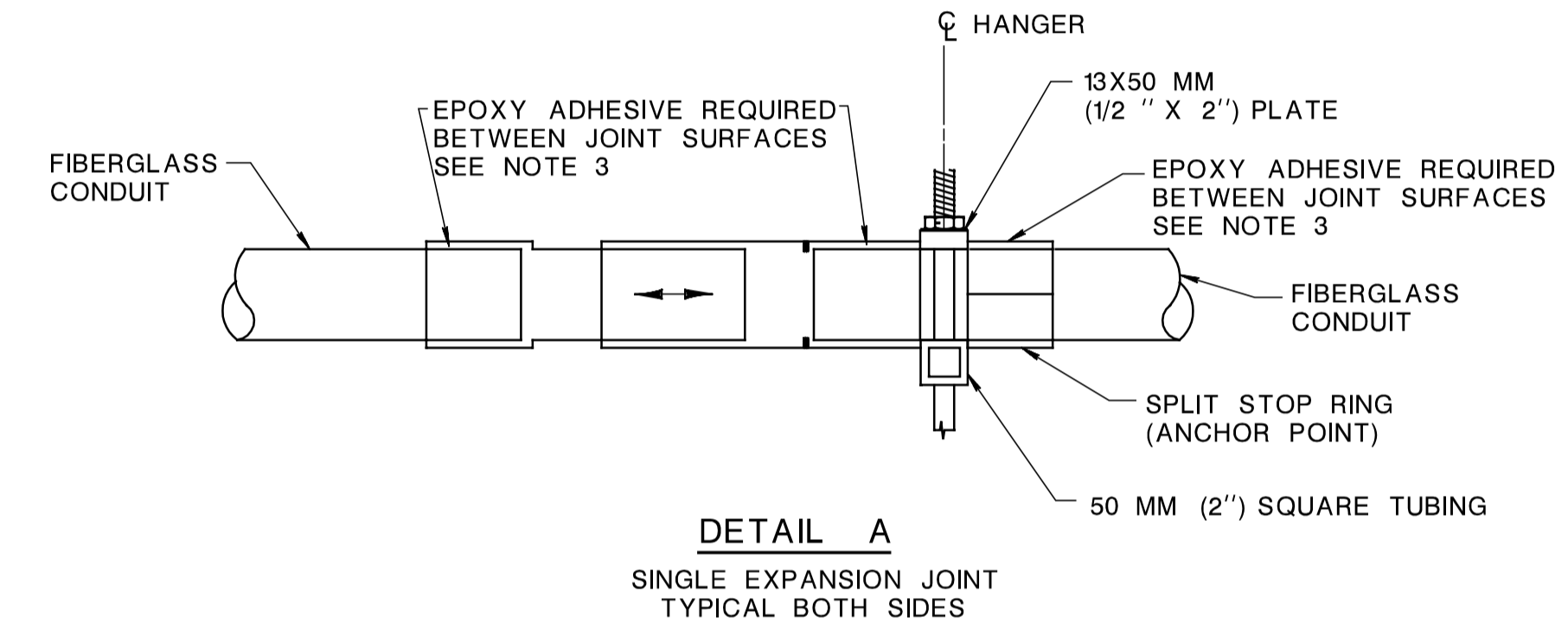


**TYPICAL INSTALLATION FIBERGLASS (FRE) CONDUIT AND FITTINGS**

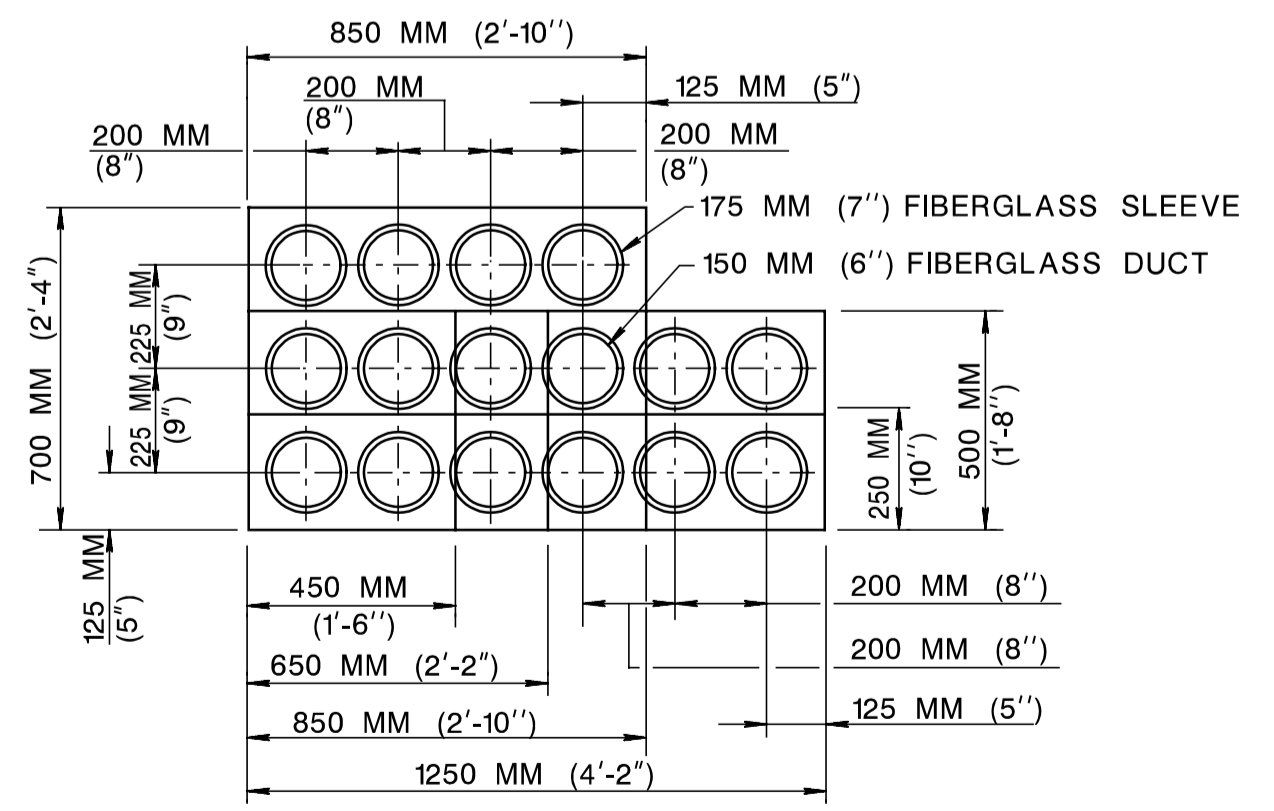
NO SCALE

NOTE: FOR SECTIONS A-A AND B-B, SEE SHEET 2 OF 2.



**SECTION X-X**

SPACING OF DUCTS THRU ABUTMENTS FOR VARIOUS NUMBER OF CONDUITS FROM ONE TO THREE CONDUITS HIGH AND FROM TWO TO SIX CONDUITS WIDE



**SECTION X-X**

SPACING OF DUCTS THRU ABUTMENTS FOR VARIOUS NUMBER OF CONDUITS FROM ONE TO THREE CONDUITS HIGH AND FROM TWO TO SIX CONDUITS WIDE

**SUGGESTED INSTALLATION PROCEDURES AND DESIGN DATA**

**NOTES:**

- FIBERGLASS CONDUIT AND FITTINGS TO BE FIBER REINFORCED EPOXY (FRE) MANUFACTURED IN ACCORDANCE WITH NEMA SPECIFICATIONS TC-14.
- CONDUIT SHALL BE MANUFACTURED TO DIMENSIONS BASED ON IRON PIPE SIZE (I.P.S.) OUTSIDE DIAMETERS
  - 125 MM (5") CONDUIT 141 MM (5.563") O.D. WT. 1.55 KG/M (1.04#/FT.)
  - 150 MM (6") CONDUIT 168 MM (6.625") O.D. WT. 1.86 KG/M (1.25#/FT.)
- CEMENTING OF CONDUITS SHALL BE IN ACCORDANCE WITH MANUFACTURERS INSTRUCTIONS. WHEN JOINING CONDUITS AND FITTINGS, AVOID THE USE OF EXCESSIVE EPOXY ADHESIVE WHICH CAN BUILD UP, AND WHEN HARDENED REDUCE THE INTERNAL DIAMETER.
- EXPANSION JOINTS TO BE INSTALLED IN THE VICINITY OF BRIDGE EXPANSION JOINTS AND NOT MORE THAN 30 M (100 FOOT) SPACING BETWEEN JOINTS.
- MAXIMUM SPACING BETWEEN HANGERS IS 3.6 M (12 FEET).
- MAXIMUM CABLE WEIGHT 29.8 KG/M (20#/FT.)
- SELECT CONDUIT LENGTHS SO THAT COUPLINGS WILL NOT COINCIDE WITH HANGER LOCATIONS.
- CEMENT SPLIT STOP RINGS ON CONDUIT AND BUTT TO BOTH SIDES OF HANGER FOR ANCHOR POINT. (DETAIL B)
- INSTALL EXPANSION JOINTS AND STOP RINGS AS DETAILED.
- INSTALL SPLIT STOP RING ANCHOR POINTS OPPOSITE EXPANSION SLEEVES.

**APPROVED VENDORS FOR BRIDGE MATERIAL**

AMERICAN U-TEL INC.  
9760 SMITH ROAD  
WILLOUGHBY OHIO 44094  
MIKE WEISS (216) 946 - 6027

METRA INDUSTRIAL CORP.  
P. O. BOX 30845  
COLUMBUS OHIO 43230  
JIM WEAVER (614) 475 - 7755

P & C INC.  
4838 E. 355 TH. ST.  
WILLOUGHBY OHIO 44094  
ALEX MCKENZIE (404) 388 - 0428

THIS SHEET FOR DESIGN INFORMATION ONLY. NOT TO BE INCLUDED IN CONTRACT PLANS

PLATE 2.7 - 1

SUBJECT		TYPICAL HANGER INSTALLATION OF 125 MM (5") OR 150 MM (6") FIBERGLASS CONDUITS FOR STEEL GIRDER BRIDGES			
LOCATION		DRAWN BY	C. FUEHRER	CHECKED	R.P.
DATE		DATE	1JUNE92	SCALE	NONE
AUTH NUMBER		PUBLIC SERVICE ELECTRIC AND GAS COMPANY			DRAWING NUMBER
REVISIONS		DISTRIBUTION SYSTEMS/ELECTRIC BUSINESS UNIT			DU-24-S-15346-2
		APPROVED/Original Signed By B. Cornwell			SHEET 1 OF 2 SHEETS

pen table = E:\System\pilot\TBLs\Non-Roadway\bridge.tbl  
 scale = 0.094657:1.000000  
 date = 18-FEB-2005 15:31  
 ID = 16412300  
 BD02MB-02 - ORIGINAL SHEET