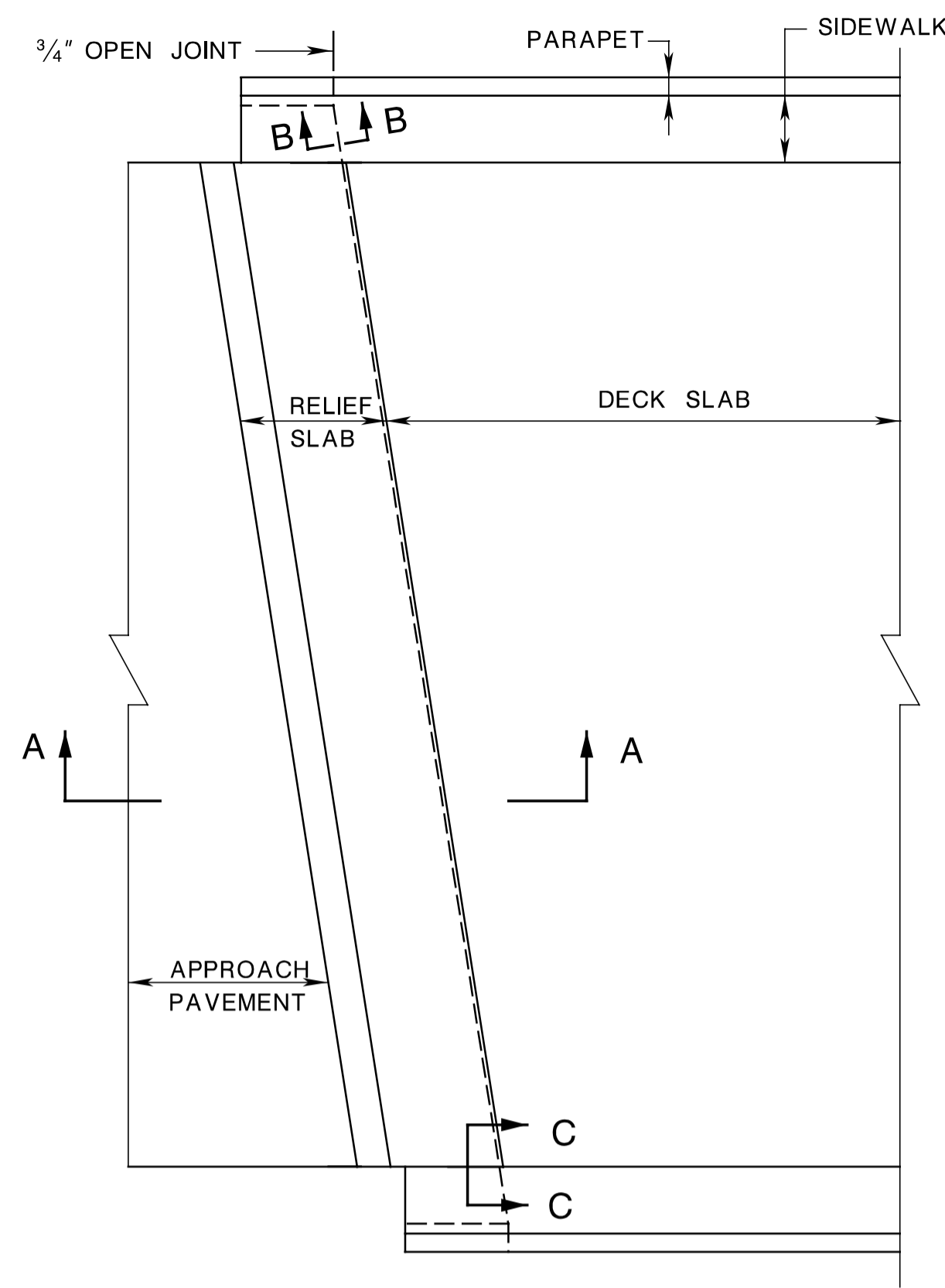
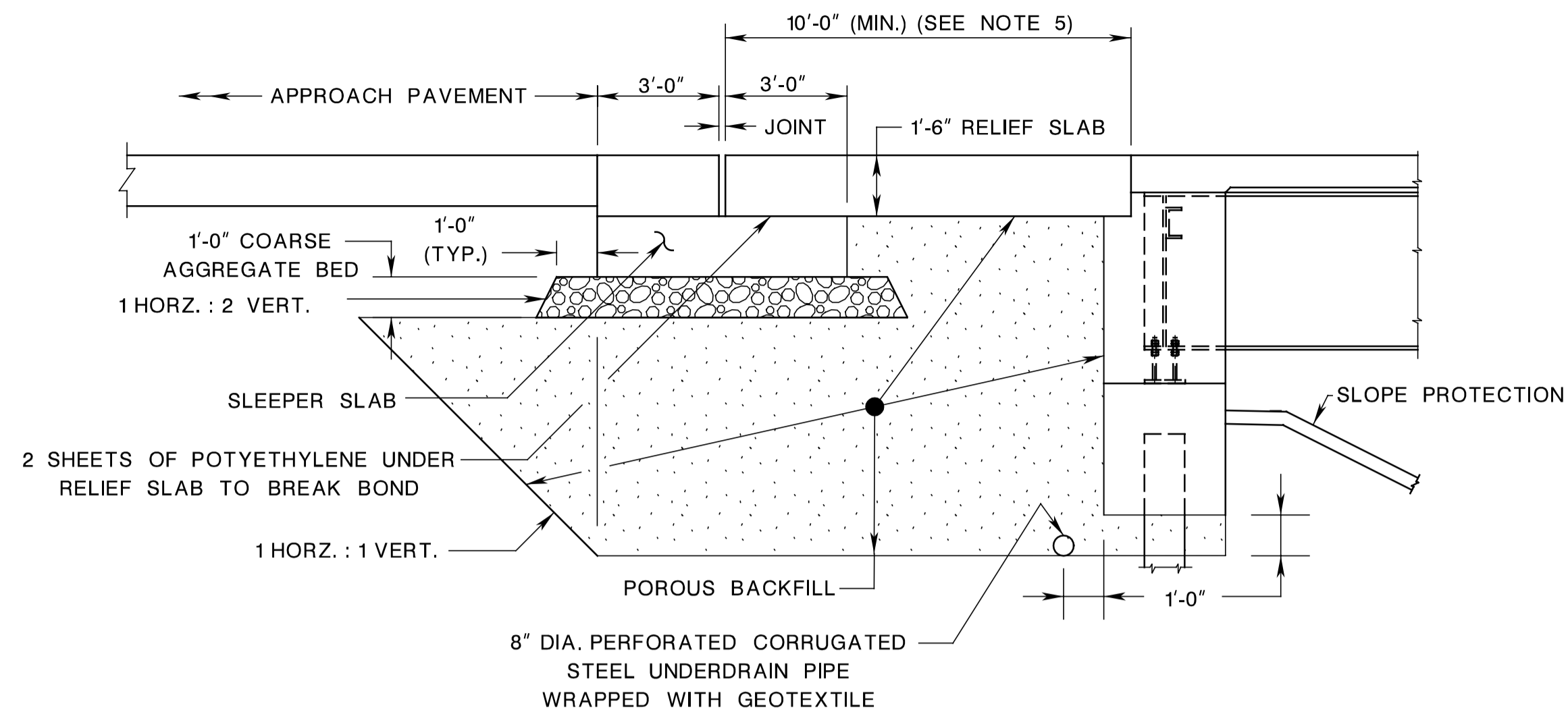


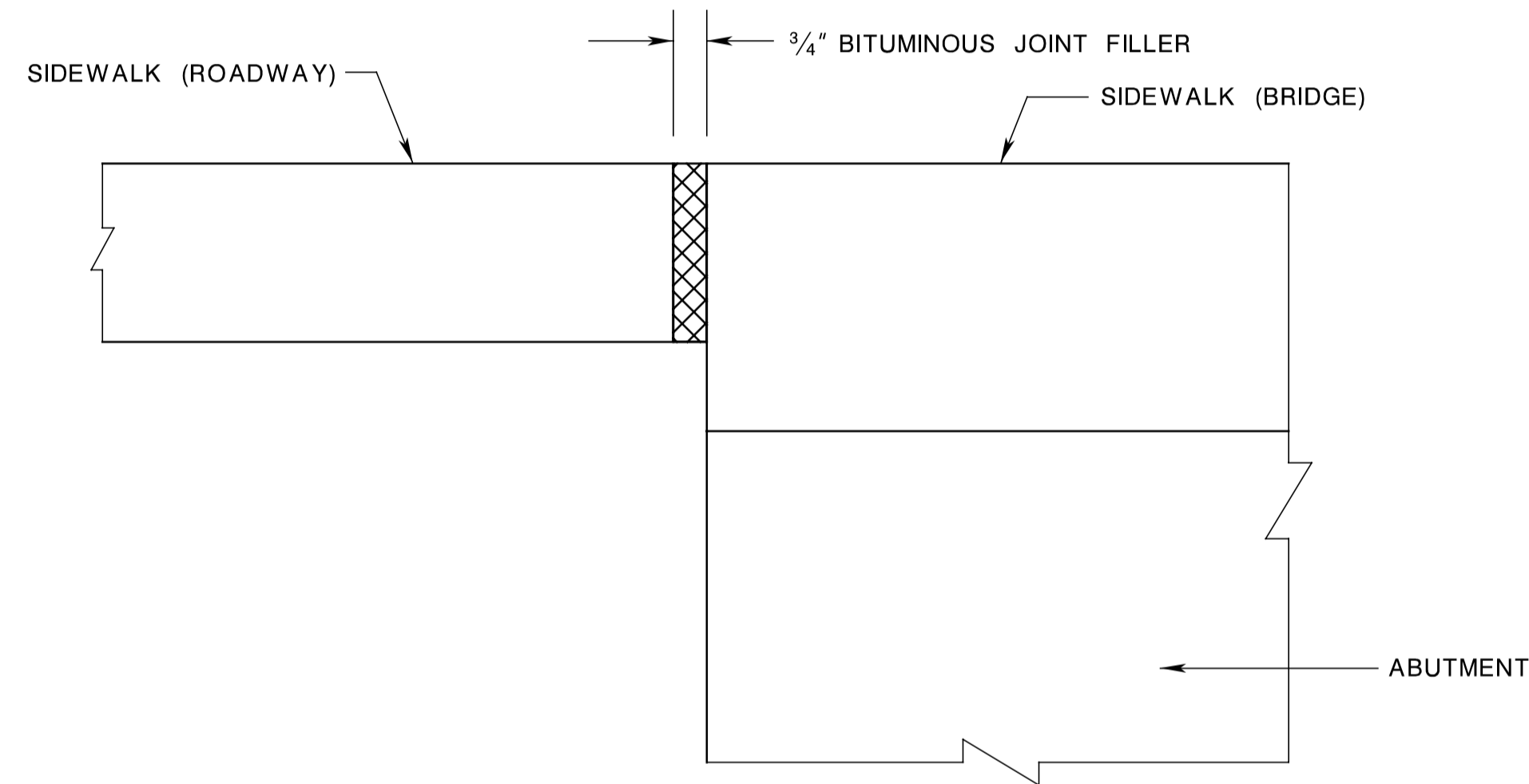
STATE	FEDERAL PROJECT NO.	SHEET	TOTAL SHEETS
N. J.			
STRUCTURE NO.			
STRUCTURE NAME			



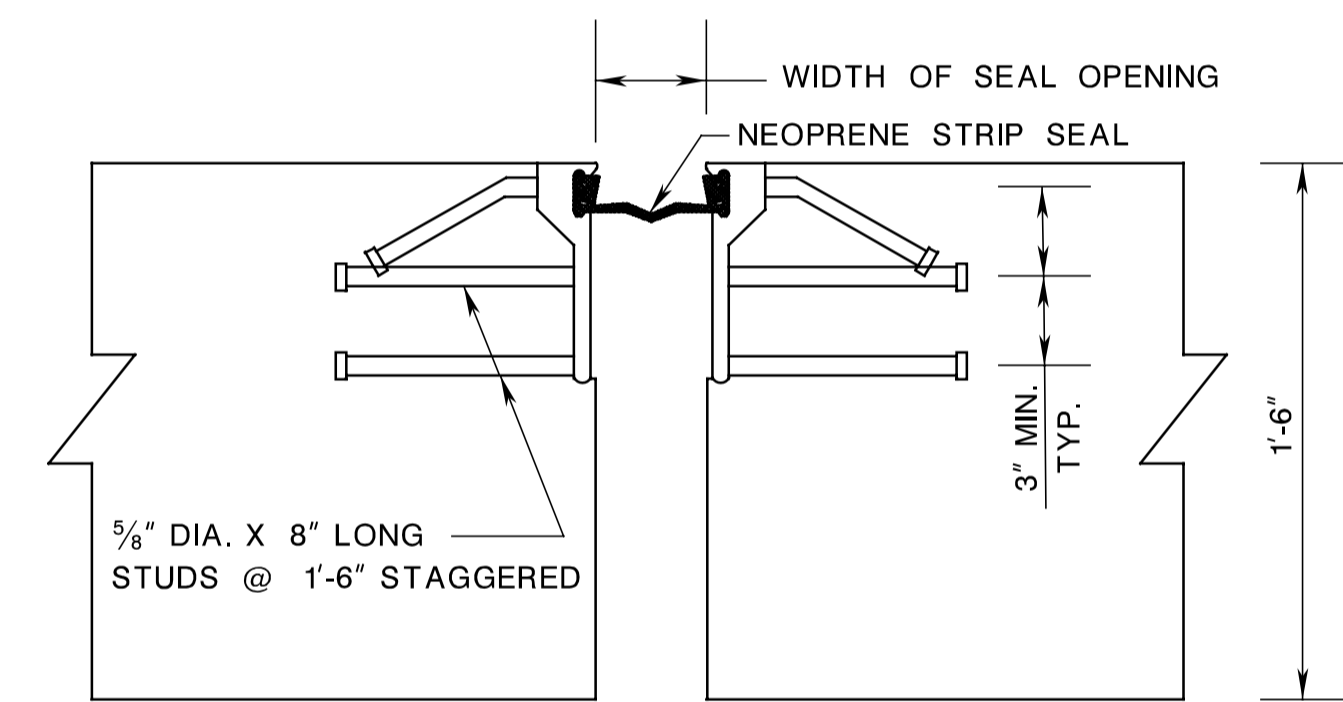
PLAN



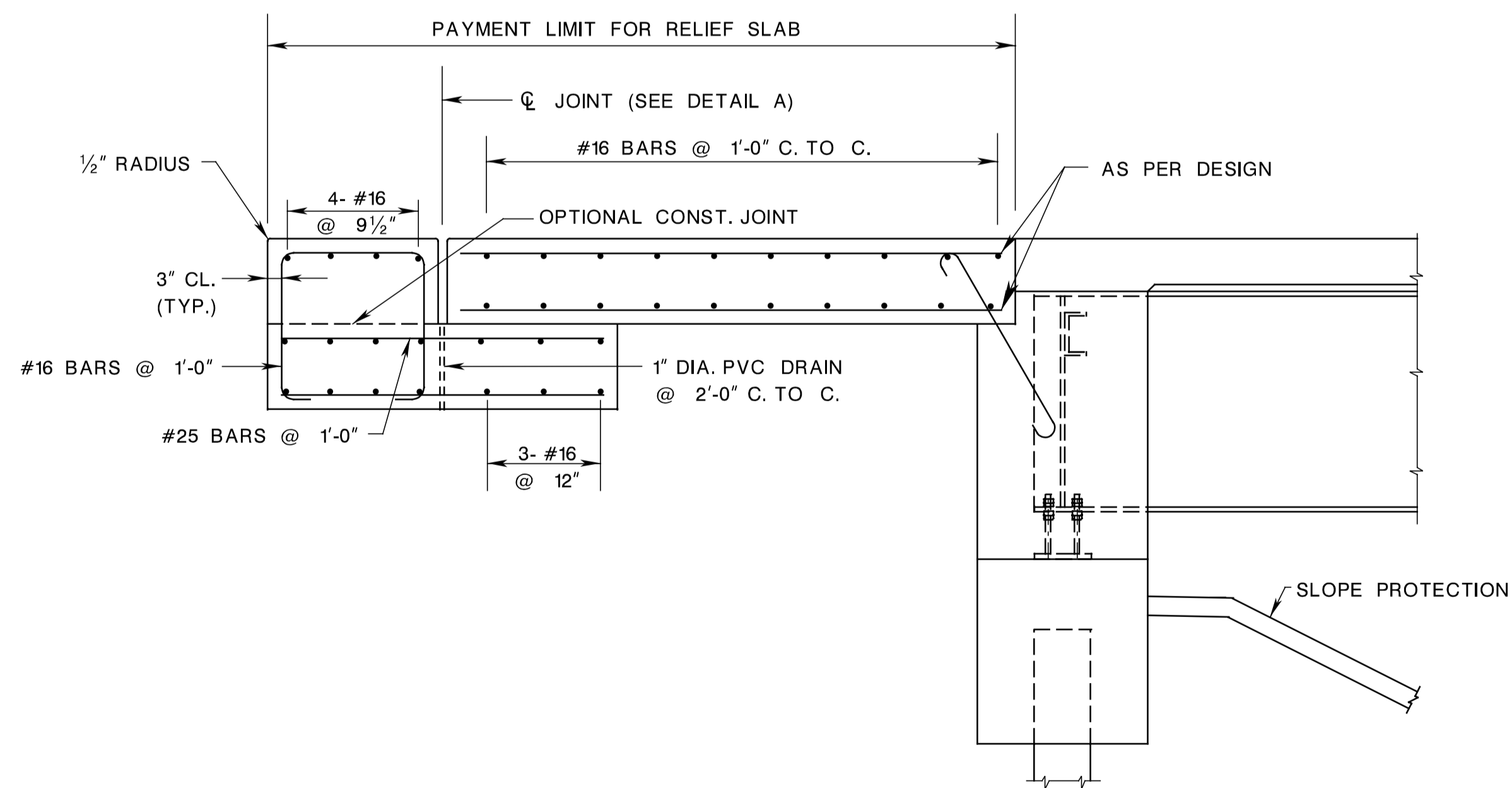
SECTION A-A



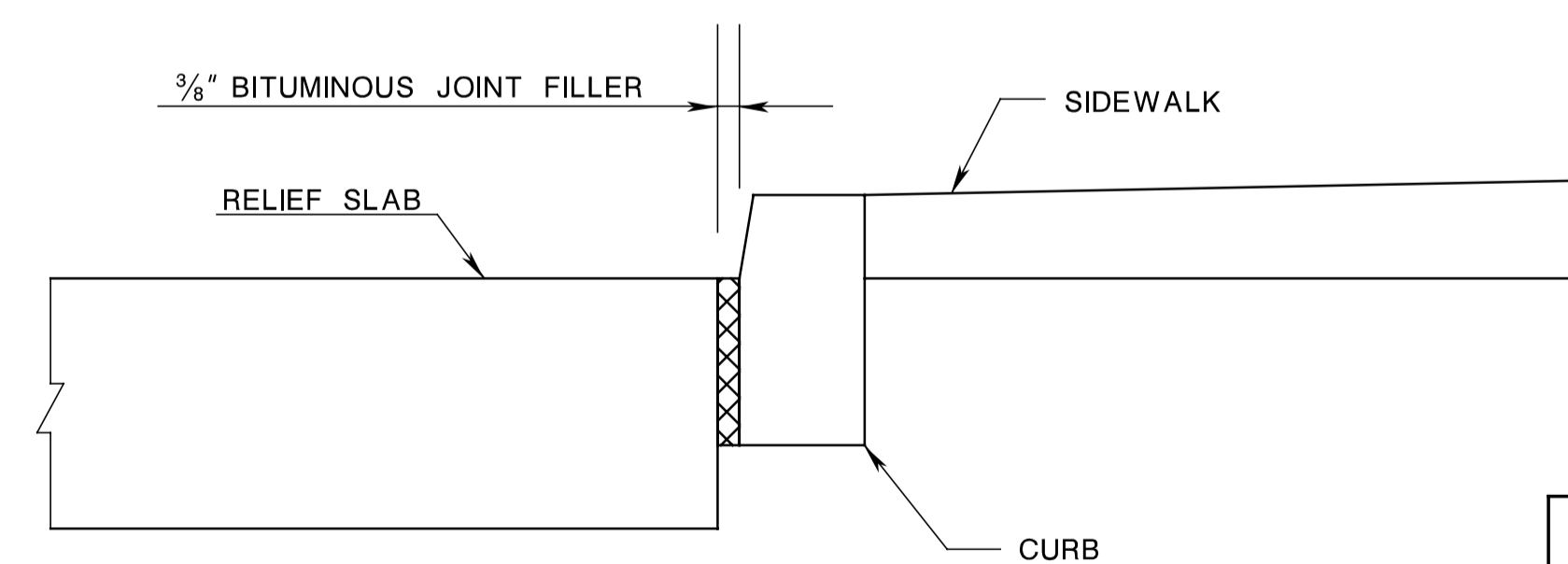
SECTION B-B



DETAIL A



SLEEPER SLAB DETAILS



SECTION C-C

NOTE TO DESIGNER:

DETAILING INCLUDED WITHIN THIS DRAWING MAY BE UTILIZED IN PREPARING CONTRACT SECTIONS. HOWEVER, IN CONFORMANCE WITH THE PROVISIONS OF SECTION 15 OF THIS MANUAL, ALTERNATIVE DETAILING MAY BE PROVIDED.

RELIEF AND SLEEPER SLAB NOTES

- (1) ALL REINFORCING BARS SHALL BE 2 1/2" CLEAR FROM CONCRETE SURFACE, EXCEPT AS NOTED.
- (2) REINFORCING STEEL SHALL BE ASTM A615 (GRADE 60) AND CORROSION PROTECTED. (REFER TO SECTION 26 OF THIS MANUAL FOR TYPES OF CORROSION PROTECTED REINFORCEMENT STEEL THAT CAN BE USED)
- (3) ANY EPOXY COATED BARS THAT ARE CUT TO FIT AND EXTERIOR BARS THAT ARE WELDED WHEN ATTACHING THE RAIL ANCHORAGE ASSEMBLIES SHALL BE TOUCHED UP WITH AN APPROVED EPOXY COATING MATERIAL.
- (4) CONCRETE FOR RELIEF AND SLEEPER SLABS SHALL BE PAID UNDER THE ITEM " CONCRETE IN SUPERSTRUCTURE, DECK SLABS ".
- (5) REFER TO SUBSECTION 1.15.2.A FOR GUIDANCE ON REQUIRED LENGTH OF RELIEF SLAB.
- (6) REFER TO SUBSECTION 1.15.2.B FOR EXPANSION PROVISIONS MEASURES.

CONTROL SECTION	JOB NO.
DES. BY	CHK. BY
DWN. BY	CHK. BY
EST. BY	CHK. BY
SPECS. BY	
IN CHARGE OF	

BDC04MB-01

**STANDARD DRAWING PLATE 2.9-5**

NEW JERSEY DEPARTMENT OF TRANSPORTATION  
BUREAU OF STRUCTURAL ENGINEERING

RELIEF SLAB AND JOINT DETAILS FOR  
INTEGRAL ABUTMENTS

ROUTE :                      SECTION :

MUNICIPALITY                      COUNTY

SCALE : NONE

BRIDGE SHEET NO. OF

pen table= E:\System\plot\PLA\Non-Roadway\bridge.tbl  
scale= 0.084657:1.000000  
date= 18-FEB-2005 15:42  
ID= 16412300