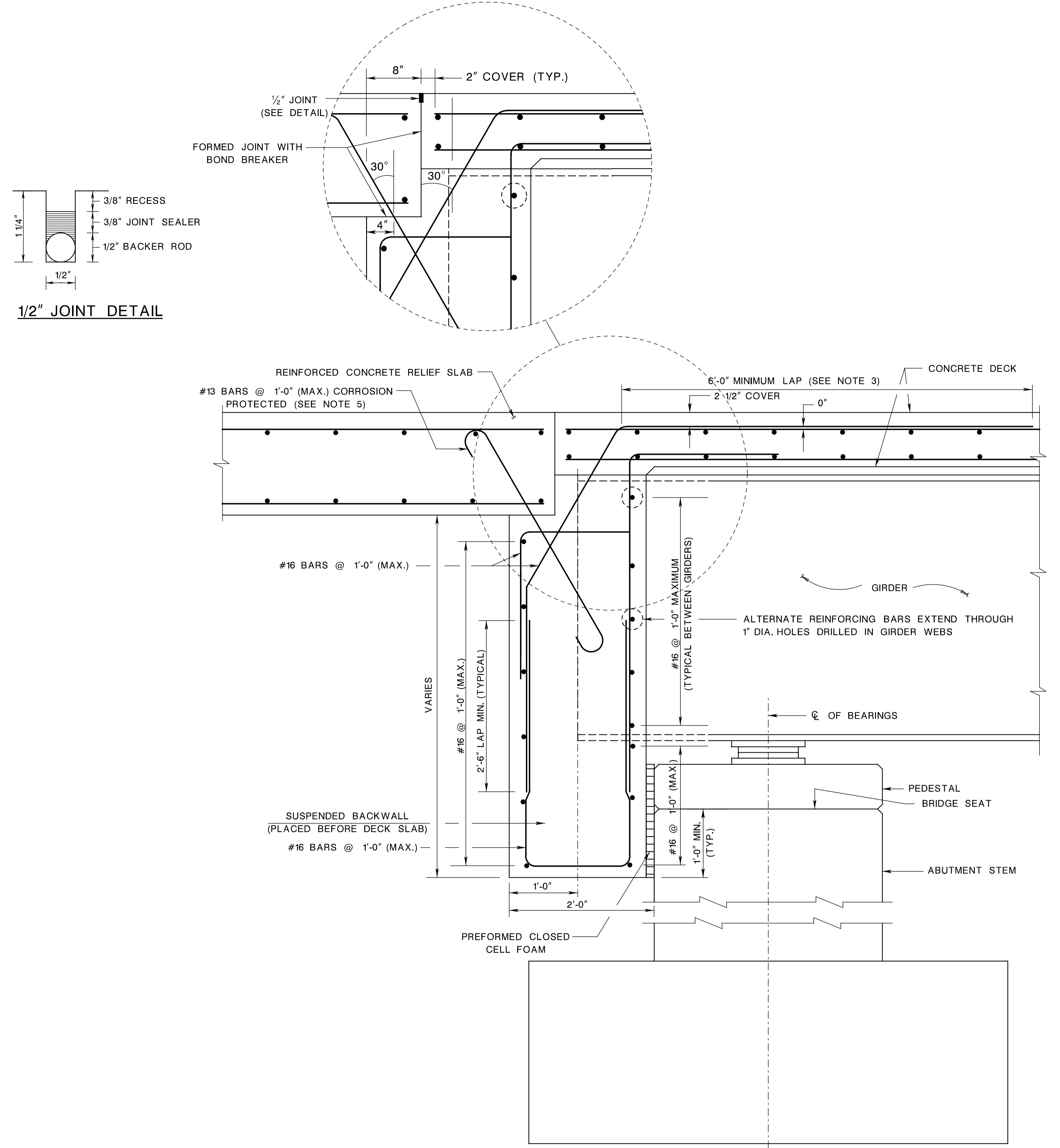


STATE	FEDERAL PROJECT NO.	SHEET	TOTAL SHEETS
N. J.			
STRUCTURE NO.			
STRUCTURE NAME			

**NOTE TO DESIGNER:**

DETAILING INCLUDED WITHIN THIS DRAWING MAY BE UTILIZED IN PREPARING CONTRACT PLANS. HOWEVER, IN CONFORMANCE WITH THE PROVISIONS OF SECTION 15 OF THIS MANUAL, ALTERNATIVE DETAILING MAY BE PROVIDED.



- NOTES TO DESIGNER**
1. THE GAP BETWEEN THE ABUTMENT STEM AND BACKWALL SHALL BE SET AT 2" PLUS THE EXPECTED MOVEMENT FOR STEEL STRUCTURES FOR TEMPERATURE EFFECTS
  2. BEARING STIFFENERS AND DIAPHRAGMS ARE REQUIRED AT THE  $\phi$  OF BEARINGS.
  3. TOP DECK REINFORCEMENT SHOULD BE DESIGNED FOR NEGATIVE MOMENT DEVELOPED FROM BACKWALL AND RELIEF SLAB.
  4. EXCAVATION AND EMBANKMENT DETAILS FOR SEMI-INTEGRAL ABUTMENTS ARE GENERALLY THE SAME AS FOR CONVENTIONAL ABUTMENTS.
  5. ALL REINFORCING BARS IN DECK SLAB, RELIEF SLAB AND SUSPENDED BACKWALL SHALL BE CORROSION PROTECTED. (REFER TO SECTION 26 OF THIS MANUAL FOR TYPES OF CORROSION PROTECTED REINFORCEMENT STEEL THAT CAN BE USED)

CONTROL SECTION		JOB NO.	
DES. BY		CHK. BY	
DWN. BY		CHK. BY	
EST. BY		CHK. BY	
SPECS. BY			
IN CHARGE OF _____			

**SEMI-INTEGRAL ABUTMENT DETAIL  
(SECTION AT ABUTMENT)**

BDC04MB-01

**STANDARD DRAWING PLATE 2.9-6**

NEW JERSEY DEPARTMENT OF TRANSPORTATION  
BUREAU OF STRUCTURAL ENGINEERING

SEMI-INTEGRAL ABUTMENT DETAILS

ROUTE : \_\_\_\_\_ SECTION : \_\_\_\_\_

MUNICIPALITY \_\_\_\_\_ COUNTY \_\_\_\_\_

SCALE : NONE

BRIDGE SHEET NO. \_\_\_\_\_ OF \_\_\_\_\_

pen table = E:\System\plot\PLA\Non-Roadway\bridge.tbl  
scale = 0.084657:1.000000  
date = 18-FEB-2005 15:42  
ID = 16412300