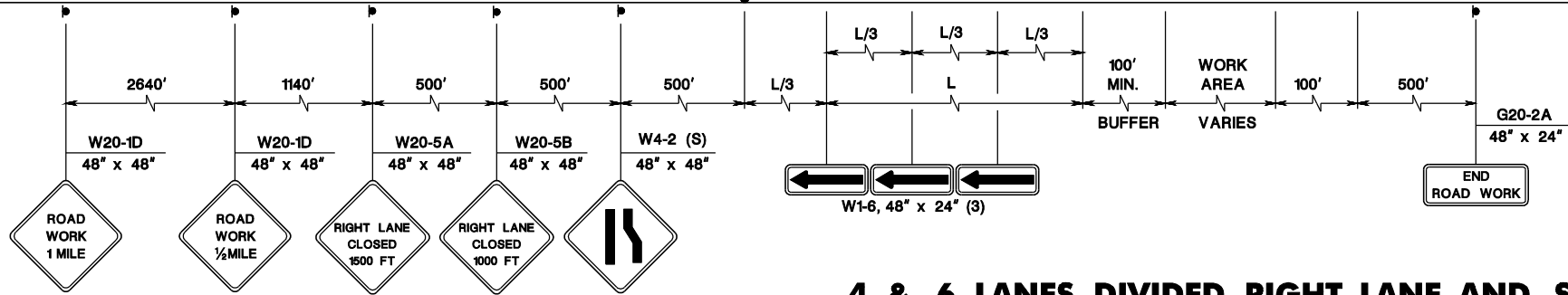
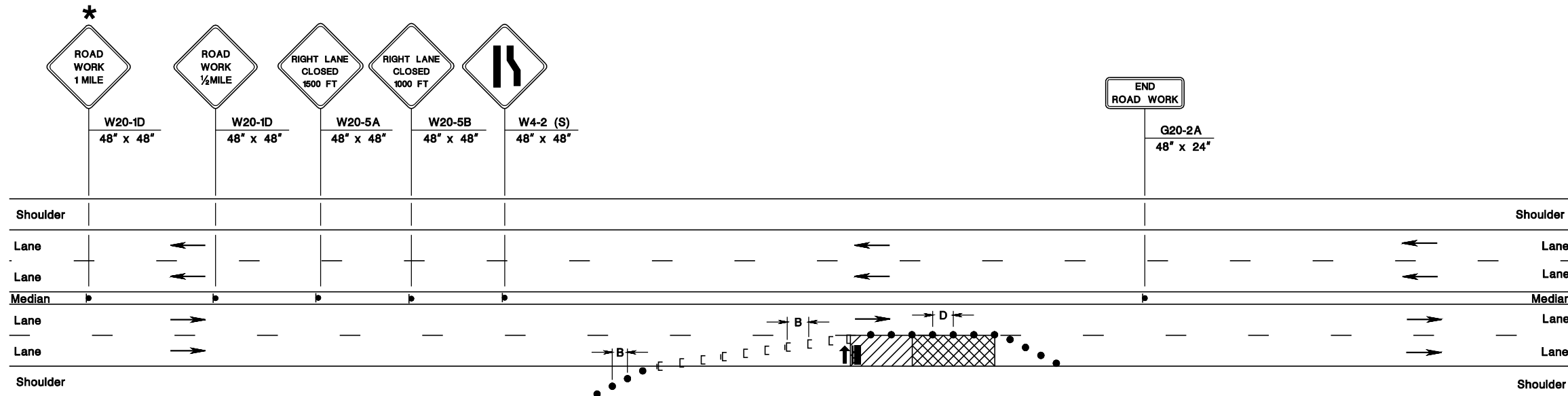
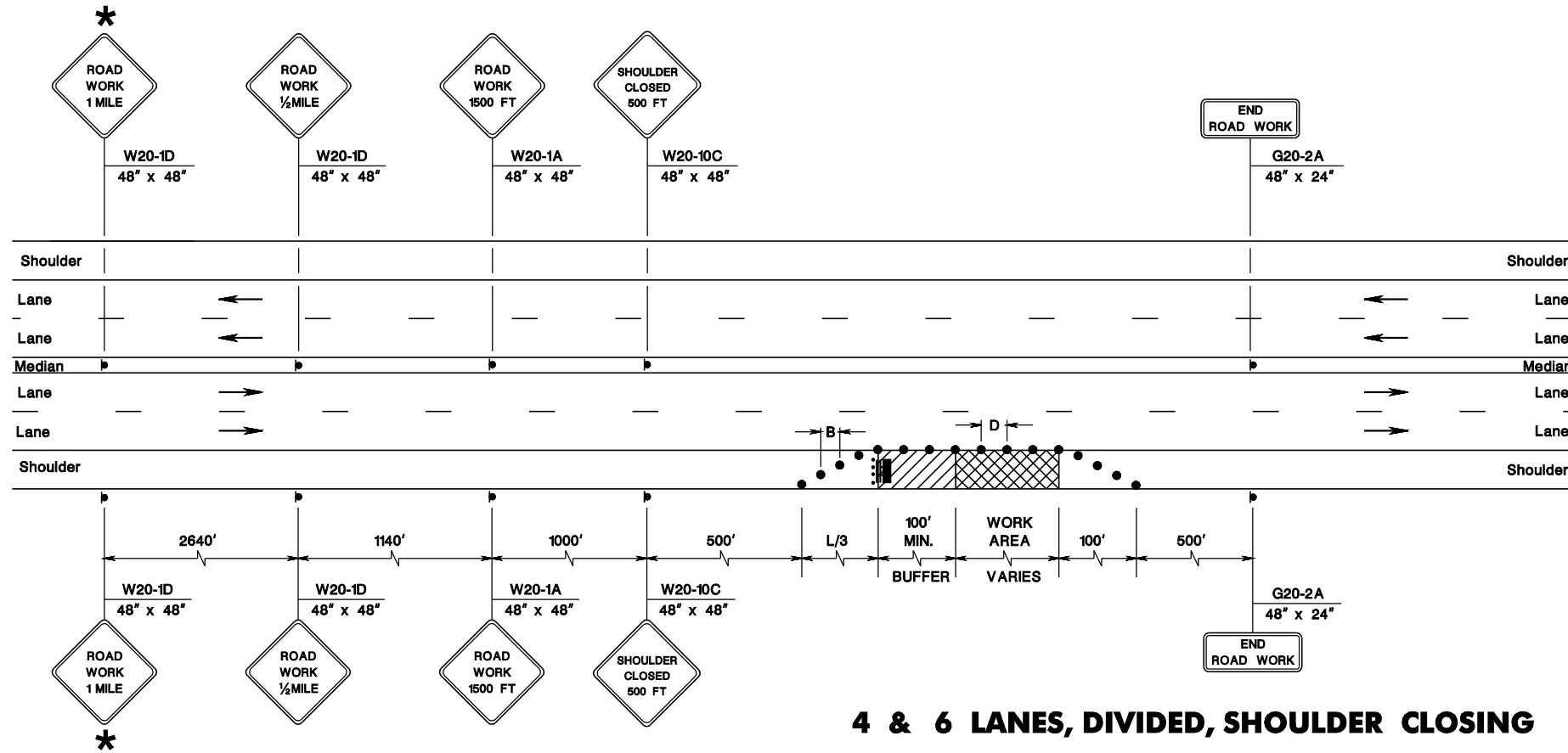


pen table=\\NDOT\RT\WS\Vaaystem\NDOT\WS\Projects\NDOT\Eng\Project\TBLA\Roadway\Details\_11x17.tbl  
scale=63.073306:1.000000  
date=28-SEP-2016 14:24  
ID=TP2VILL

BD-CRD-01-ORIGINAL SHEET



#### 4 & 6 LANES, DIVIDED, RIGHT LANE AND SHOULDER CLOSING



#### 4 & 6 LANES, DIVIDED, SHOULDER CLOSING

\* INSTALL THIS SIGN FOR ROADS WITH A POSTED SPEED LIMIT OF 45 M.P.H. OR GREATER UNLESS OTHERWISE DIRECTED BY THE RE. FOR ROADS WITH A SPEED LIMIT GREATER THAN 55 M.P.H., ALSO INSTALL A "ROAD WORK 2 MILES" SIGN 2 MILES IN ADVANCE OF LANE CLOSING UNLESS OTHERWISE DIRECTED BY THE RE.

#### NOTES:

1. IF MEDIAN IS NARROWER THAN WIDTH OF SIGN PLUS 2 FEET, OMIT MEDIAN SIGNING.
2. SEE RECOMMENDED TAPER LENGTH AND SPACING TABLE ON SHEET TCD-2 FOR VALUES OF L, B, AND D.

N.T.S.

TCD-14  
NEW JERSEY DEPARTMENT OF TRANSPORTATION

#### TRAFFIC CONTROL DETAILS