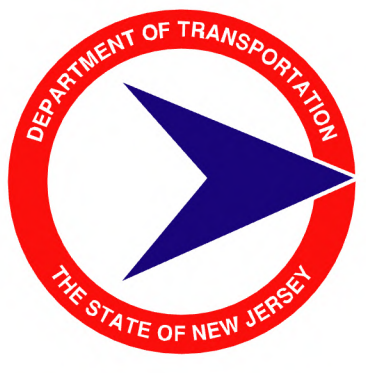


74°20'W 74°17'30"W 74°15'W 74°12'30"W 74°10'W 74°7'30"W 74°5'W 74°2'30"W 74°W 73°57'30"W 73°55'W 149°00'E



STATE OF NEW JERSEY

Governor Philip D. Murphy
Lt. Governor Tahesha Way

MAPPING BY THE
NEW JERSEY DEPARTMENT OF
TRANSPORTATION

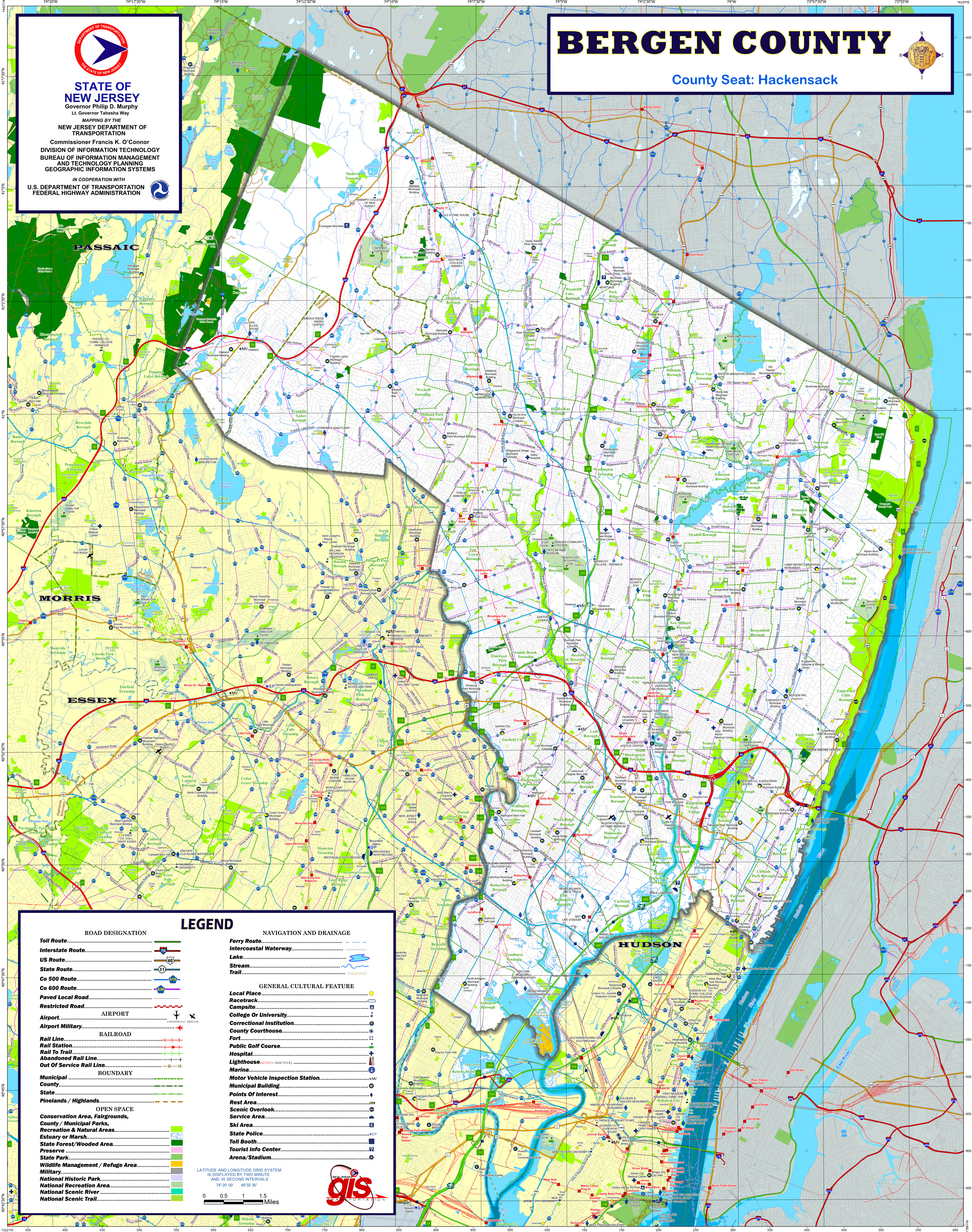
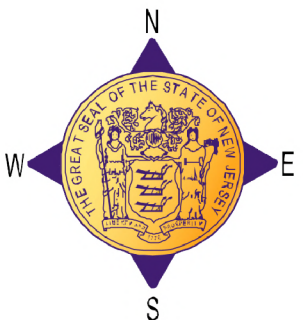
Commissioner Francis K. O'Connor
DIVISION OF INFORMATION TECHNOLOGY
BUREAU OF INFORMATION MANAGEMENT
AND TECHNOLOGY PLANNING
GEOGRAPHIC INFORMATION SYSTEMS

IN COOPERATION WITH
U.S. DEPARTMENT OF TRANSPORTATION
FEDERAL HIGHWAY ADMINISTRATION



BERGEN COUNTY

County Seat: Hackensack



LEGEND

ROAD DESIGNATION

- Toll Route.....
- Interstate Route.....
- US Route.....
- State Route.....
- Co 500 Route.....
- Co 600 Route.....
- Paved Local Road.....
- Restricted Road.....
- AIRPORT
- Airport Military.....
- RAILROAD
- Rail Line.....
- Rail Station.....
- Rail To Trail.....
- Abandoned Rail Line.....
- Out Of Service Rail Line.....
- BOUNDARY
- Municipal.....
- County.....
- State.....
- Pinelands / Highlands.....
- OPEN SPACE
- Conservation Area, Fairgrounds,
County / Municipal Parks,
Recreation & Natural Areas.....
- Estuary or Marsh.....
- State Forest/Wooded Area.....
- Preserve.....
- State Park.....
- Wildlife Management / Refuge Area.....
- Military.....
- National Historic Park.....
- National Recreation Area.....
- National Scenic River.....
- National Scenic Trail.....

NAVIGATION AND DRAINAGE

- Ferry Route.....
- Interoceanic Waterway.....
- Lake.....
- Stream.....
- Trail.....

GENERAL CULTURAL FEATURE

- Local Place.....
- Racetrack.....
- Campsite.....
- College Or University.....
- Correctional Institution.....
- County Courthouse.....
- Fort.....
- Public Golf Course.....
- Hospital.....
- Lighthouse (ACTIVE/INACTIVE).....
- Marina.....
- Motor Vehicle Inspection Station.....
- Municipal Building.....
- Points Of Interest.....
- Rest Area.....
- Scenic Overlook.....
- Service Area.....
- Ski Area.....
- State Police.....
- Toll Booth.....
- Tourist Info Center.....
- Arena/Stadium.....

LATITUDE AND LONGITUDE GRID SYSTEM
IS DISPLAYED BY TWO MINUTE
AND 30 SECOND INTERVALS
74°20' 00" 40' 30" 30"

0 0.5 1 1.5
Miles

