

# UNION COUNTY

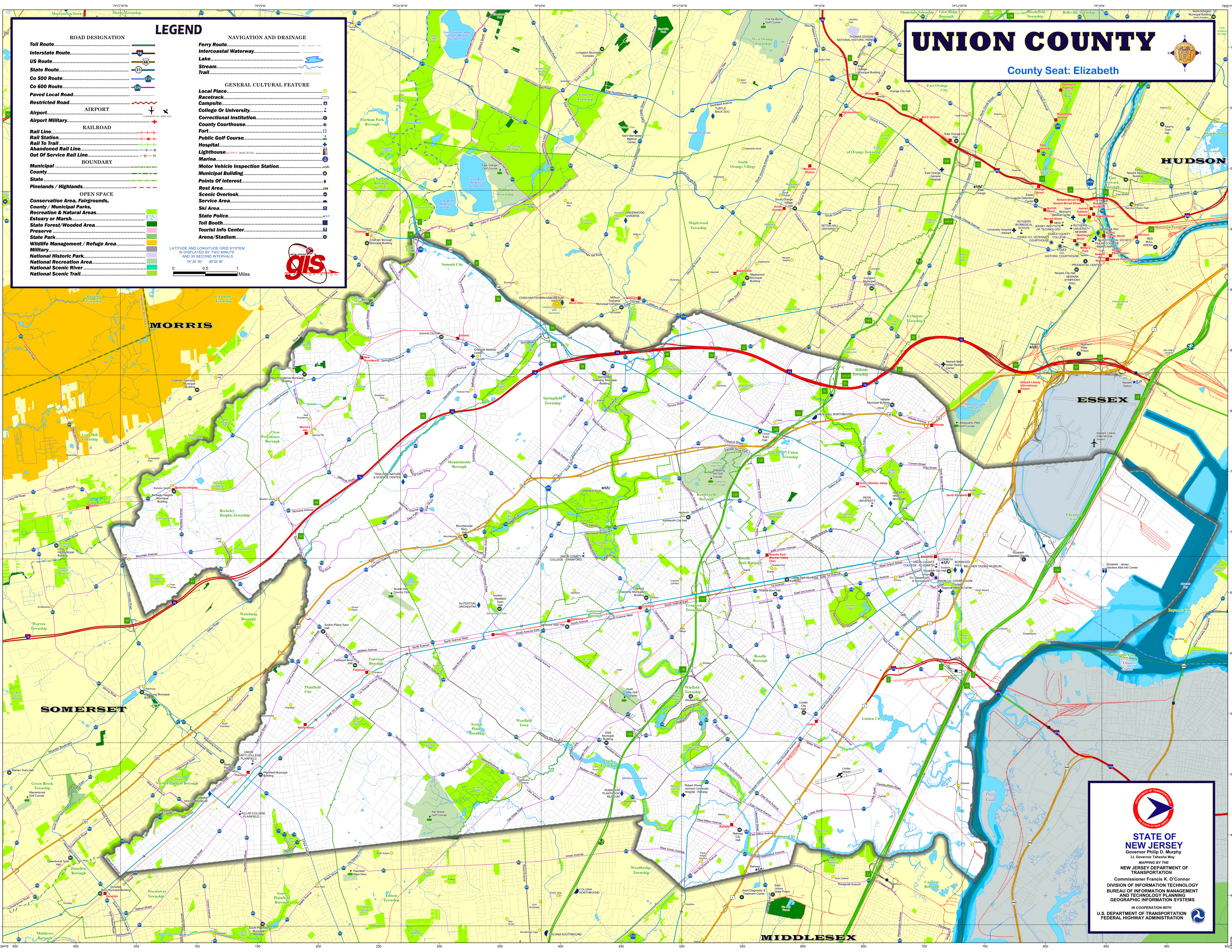
County Seat: Elizabeth

## LEGEND

<b>ROAD DESIGNATION</b>		<b>NAVIGATION AND DRAINAGE</b>	
Toll Route.....		Ferry Route.....	
Interstate Route.....		Intercoastal Waterway.....	
US Route.....		Lake.....	
State Route.....		Stream.....	
Co 500 Route.....		Trail.....	
Co 600 Route.....			
Paved Local Road.....		<b>GENERAL CULTURAL FEATURE</b>	
Restricted Road.....		Local Place.....	
<b>AIRPORT</b>		Racetrack.....	
Airport.....		College Or University.....	
Airport Military.....		Correctional Institution.....	
<b>RAILROAD</b>		County Courthouse.....	
Rail Line.....		Fort.....	
Rail Station.....		Public Golf Course.....	
Rail To Trail.....		Hospital.....	
Abandoned Rail Line.....		Lighthouse.....	
Out Of Service Rail Line.....		Marina.....	
<b>BOUNDARY</b>		Motor Vehicle Inspection Station.....	
Municipal.....		Municipal Building.....	
County.....		Points Of Interest.....	
State.....		Rest Area.....	
Pinelands / Highlands.....		Scenic Overlook.....	
<b>OPEN SPACE</b>		Service Area.....	
Conservation Area, Fairgrounds, County / Municipal Parks, Recreation & Natural Areas.....		Ski Area.....	
Estuary or Marsh.....		State Police.....	
State Forest/Wooded Area.....		Toll Booth.....	
Preserve.....		Tourist Info Center.....	
State Park.....		Arena/Stadium.....	
Wildlife Management / Refuge Area.....			
Military.....			
National Historic Park.....			
National Recreation Area.....			
National Scenic River.....			
National Scenic Trail.....			

LATITUDE AND LONGITUDE GRID SYSTEM IS DISPLAYED BY TWO MINUTE AND 30 SECOND INTERVALS  
74° 20' 00" 40° 32' 30"

0 0.5 1 Miles



**STATE OF NEW JERSEY**  
Governor Philip D. Murphy  
Lt. Governor Tahesha Way

NEW JERSEY DEPARTMENT OF TRANSPORTATION  
Commissioner Francis K. O'Connor  
DIVISION OF INFORMATION TECHNOLOGY  
BUREAU OF INFORMATION MANAGEMENT  
AND TECHNOLOGY PLANNING  
GEOGRAPHIC INFORMATION SYSTEMS

IN COOPERATION WITH  
U.S. DEPARTMENT OF TRANSPORTATION  
FEDERAL HIGHWAY ADMINISTRATION