

New Jersey Department of Health and Senior Services
Communicable Disease Service
Influenza Activity Summary
Week Ending October 14, 2006 (MMWR Week 41)

Influenza activity level: **NO ACTIVITY**

No Activity- At least 2 of 3 parameters at or below state baseline **AND** no lab confirmed cases

Sporadic – At least 2 of 3 parameters above state baseline **AND** confirmed laboratory cases anywhere in the state **OR** at least one laboratory confirmed outbreak in an institution anywhere in the state

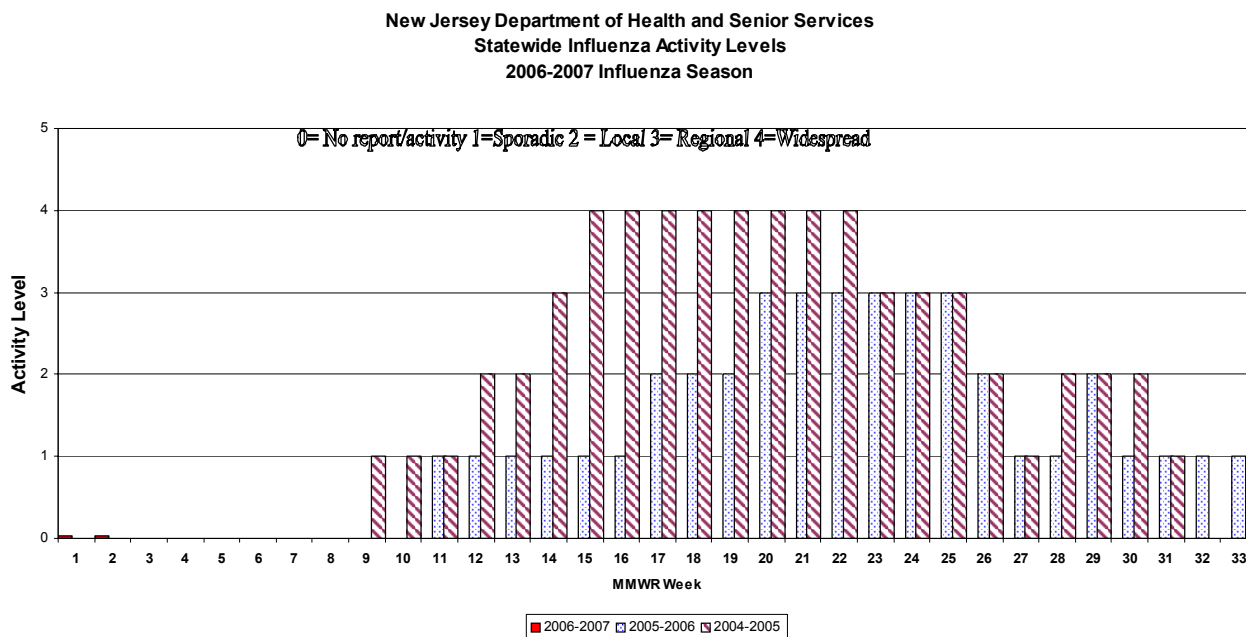
Local – At least 2 of 3 parameters above state baseline in a single county **AND** confirmed laboratory cases from that same county within the previous 3 weeks (other counties may be above baseline without lab confirmed cases) **OR** confirmed outbreaks in 2 or more institutions in a single county

Regional – At least 2 of 3 parameters above state baseline in ≥ 2 but ≤ 10 counties **AND** laboratory confirmed cases from these same counties in past 3 weeks **OR** confirmed outbreaks institutions in ≥ 2 but ≤ 10 counties

Widespread – At least 2 of 3 parameters above state baseline in > 10 counties **OR** institutional outbreaks in > 10 counties **AND** lab confirmed influenza cases in previous 3 weeks.

Parameter = School, emergency department, or long term care weekly surveillance data

Baseline is calculated by taking the average of statewide percentages of ILI for a 3 year (2004, 2005, 2006) period during months when influenza is less likely to be circulating (May-August). Weeks in which less than 4 counties reported were not included in the calculation.



Regional Data **NO ACTIVITY IN ANY REGION**

Public Health Regions

NW Region (Morris, Passaic, Sussex, Warren)

NE Region (Bergen, Essex, Hudson)

CW Region (Hunterdon, Mercer, Somerset)

CE Region (Middlesex, Monmouth, Ocean, Union)

South Region (Atlantic, Burlington, Camden, Cape May, Cumberland, Gloucester, Salem)

No Activity- At least 2 of 3 parameters at or below state baseline **AND** no lab confirmed cases in the public health region

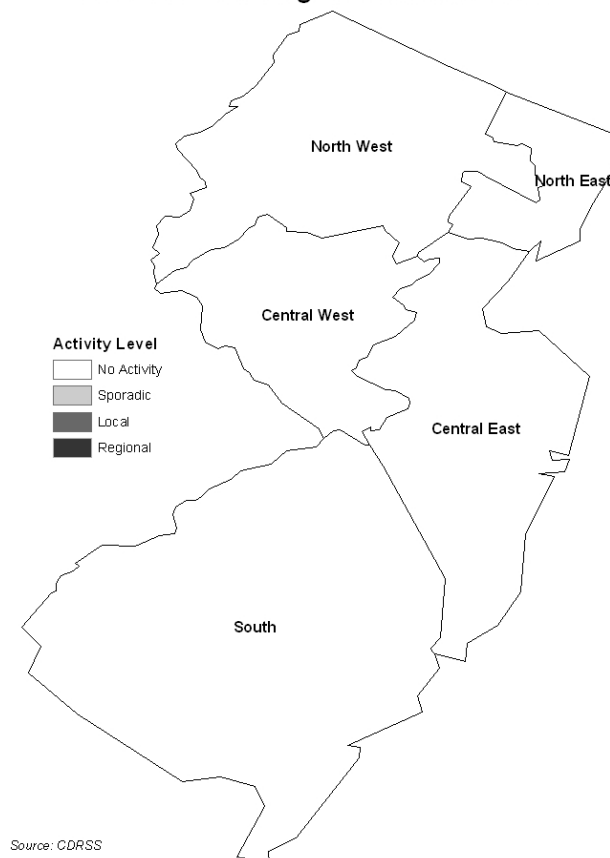
Sporadic – At least 2 of 3 parameters above state baseline **AND** confirmed laboratory cases anywhere in the public health region **OR** at least one laboratory confirmed outbreak in an institution anywhere in the public health region

Local – At least 2 or 3 parameters above state baseline in a single county of a public health region **AND** confirmed laboratory cases from that same county within the previous 3 weeks (other counties may be above baseline without lab confirmed cases) **OR** confirmed outbreaks in 2 or more institutions in a single county of a public health region

Regional – At least 2 of 3 parameters above state baseline in at least half of counties of public health region **AND** laboratory confirmed cases from these same counties in past 3 weeks **OR** confirmed outbreaks institutions in at least half of counties of public health region counties

Widespread – Not used for public health region data

Public Health Region Influenza Data



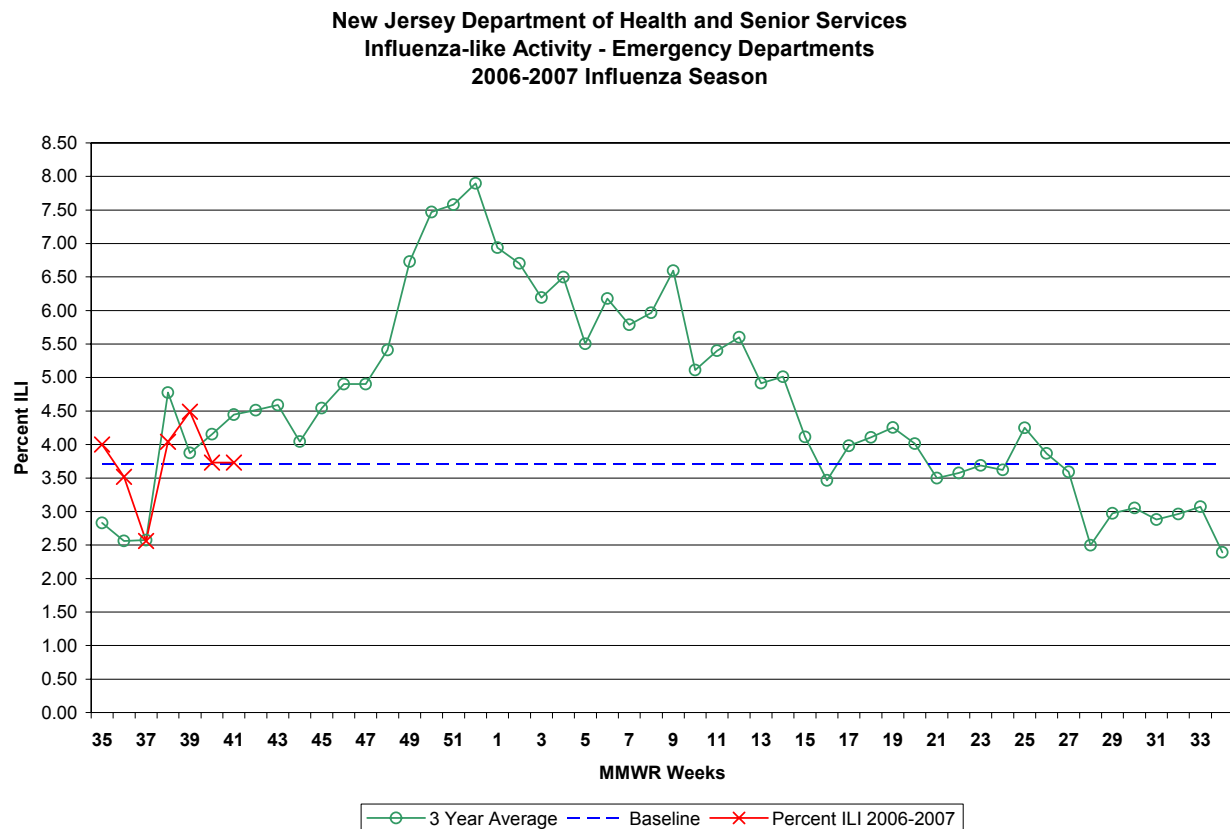
Laboratory Surveillance

During week 41, Hackensack University Medical Center and NJDHSS PHEL have tested 13 samples for influenza. The total number of samples tested during the 2006-2007 influenza season is 31. None of these samples were positive for influenza. NJDHSS has received 3 reports of positive rapid antigen tests** from Ocean County (1 influenza A, 2 influenza B).

Influenza-like Illness (ILI) Surveillance*

Emergency Departments

During week 41, 3.73% ILI was reported statewide from emergency departments. This is unchanged over the previous week (3.73%). The percent ILI for each county ranged from 0.6% to 11.85%. The percent ILI for this same week last year was 3.69% in emergency departments. The percent ILI for the northeast (4.74%) and central west (4.74%) public health regions were above state baseline (3.71%).



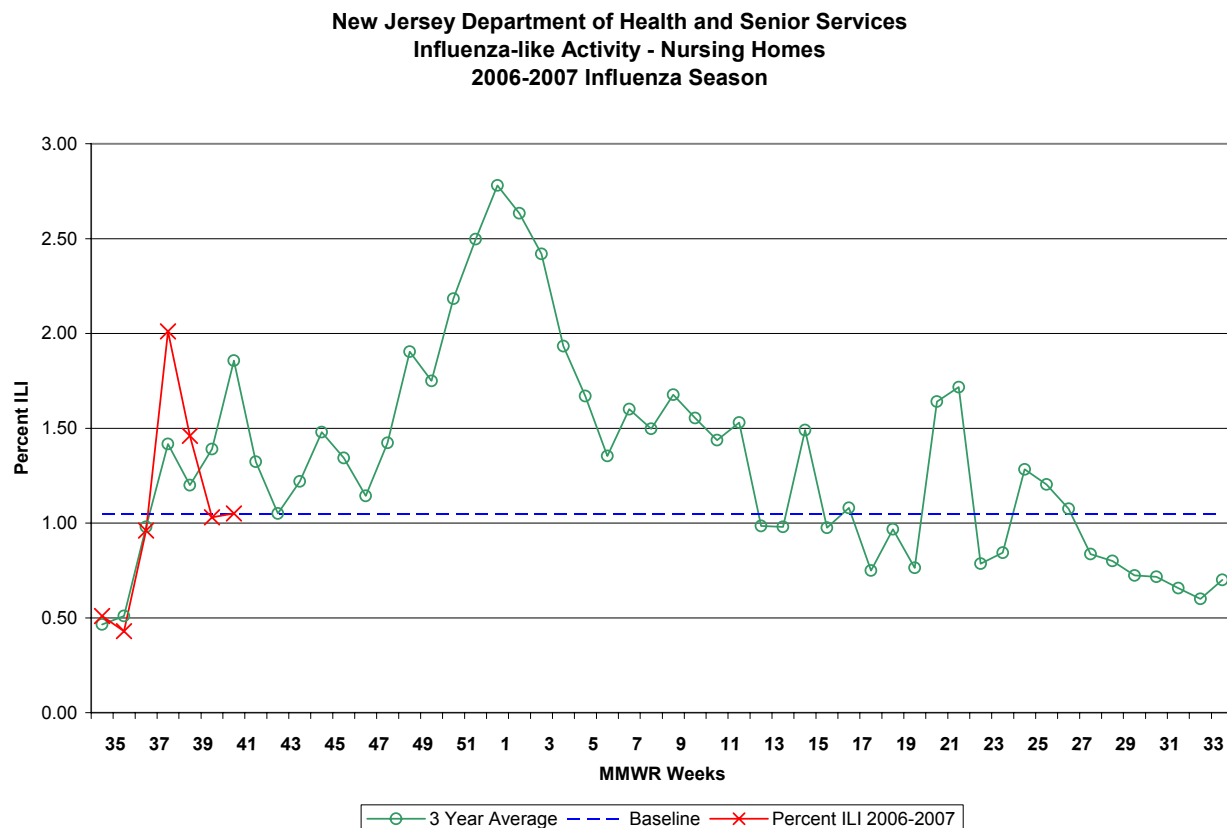
*Additional data has been received from Burlington, Camden, and Essex counties. This data is not reflected in this report.

Additionally, the number of enrolled long term care facilities on the attached report should read 5 and not 11.

** The specificity and, in particular, the sensitivity of rapid tests are lower than for viral culture and vary by test. Because of the lower sensitivity of the rapid tests, physicians should consider confirming negative tests with viral culture or other means because of the possibility of false-negative rapid test results, especially during periods of peak community influenza activity. In contrast, false-positive rapid test results are less likely but can occur during periods of low influenza activity. Therefore, when interpreting results of a rapid influenza test, physicians should consider the positive and negative predictive values of the test in the context of the level of influenza activity in their community.

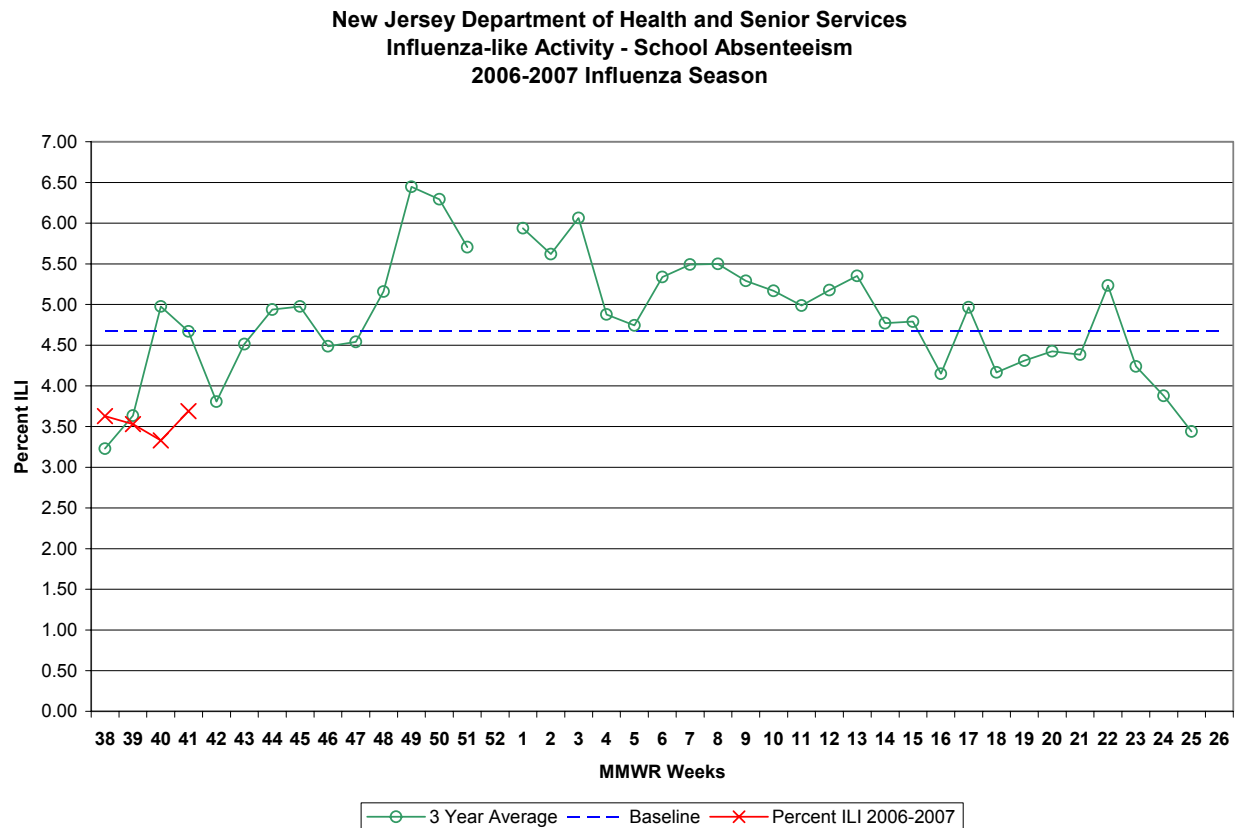
Long-term Care Facilities

During week 41, 1.05% ILI was reported statewide from long term care facilities. This is a slight increase over the previous week (1.03%). The percent ILI for each county ranged from 0.15% to 6.25%. No reports regarding ILI/respiratory outbreaks in communal living facilities were received. The percent ILI for this same week last year was 1.28% in long-term care facilities. The percent ILI for the northwest (1.37%) and northeast (1.61%) public health region were above state baseline (1.05%).



School Absenteeism

During week 41, schools reported 3.69% absenteeism. This is an increase over the previous week (3.33%). The percent ILI for each county ranged from 1.93% to 6.32%. The percent absent for this same week last year was 4.13%. The percent ILI from all public health regions were below state baseline.

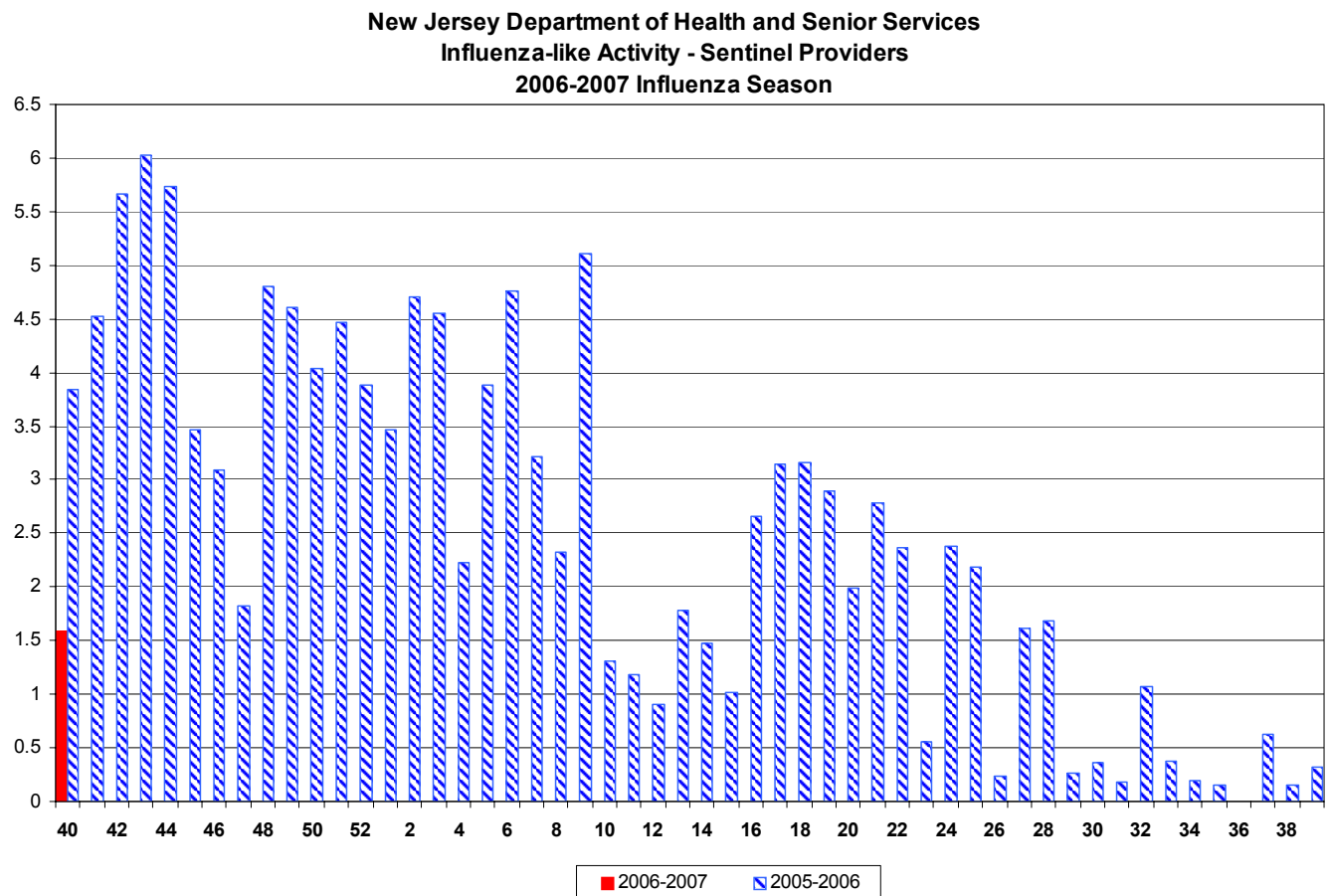


Sentinel Provider Surveillance

During week 41, 0% of sentinel provider patient visits were due to ILI. These data reflects reports from one (2%) of the enrolled sentinel providers.

UPDATE

During week 40, 1.59% of sentinel provider patient visits were due to ILI. These data reflects reports from six (14%) of the enrolled sentinel providers.



Pediatric Influenza Surveillance

To date, NJDHSS has received no reports of pediatric illness or death associated with influenza that met the case definition.

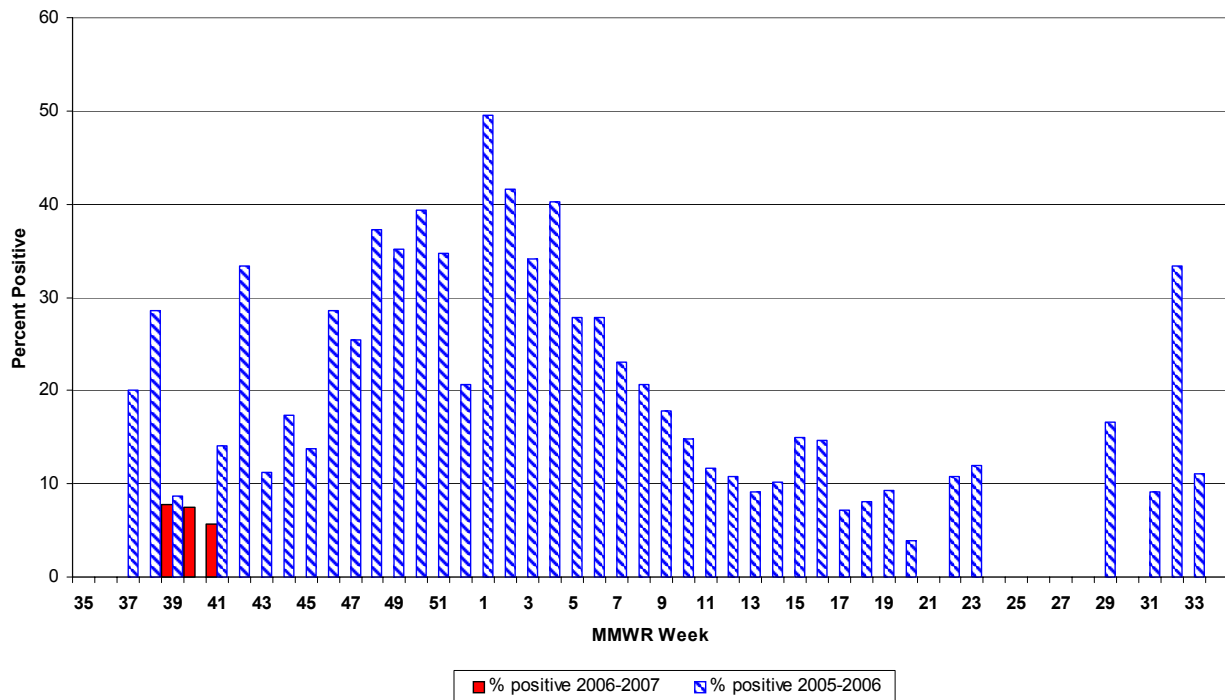
122 City Mortality Report

During week 40, 2.78% of all deaths reported by the vital statistics offices in 6 New Jersey cities (i.e., Camden, Elizabeth, Jersey City, Newark, Paterson, Trenton) were due to pneumonia or influenza. This was a decrease over the previous week (5.22%). The percentage of death due to pneumonia or influenza for this same week last year was 6.71%.

RSV Reports

During week 41, 5.71% of all RSV samples tested were positive. This was a decrease over the previous week 7.5%. The percent of samples positive RSV for this same week last year was 14.00%.

New Jersey Department of Health and Senior Services Respiratory Syncytial Virus (RSV) Surveillance by Week 2006-2007 Influenza Season



Additional Information

For additional information regarding influenza surveillance please visit the following websites.

<http://nj.gov/health/flu/surveillance.shtml>

<http://www.cdc.gov/flu/>



	Long Term Care			Schools			Hospital Emergency Department			RSV Tests	
County	# Enrolled	# Reports Rec'd	% ILI	# Enrolled	# Reports Rec'd	% Absent	# Enrolled	# Reports Rec'd	% ILI	# Positive	Total Tests Performed
ATLANTIC	11	1	2.48	16	13	6.32	4	4	1.09	0	11
BERGEN	3	0	0.00	11	0	0.00	6	0	0.00	0	0
BURLINGTON	5	3	0.15	71	57	3.88	4	2	1.87	0	0
CAMDEN	5	3	0.92	16	6	2.85	6	5	3.20	0	0
CAPE MAY	5	2	0.67	11	6	4.35	1	1	6.86	0	1
CUMBERLAND	4	3	1.52	9	5	4.21	3	3	5.20	0	3
ESSEX	13	3	1.14	31	8	2.60	11	8	4.74	1	29
GLOUCESTER	4	1	6.25	5	0	0.00	2	0	0.00	0	0
HUDSON	10	2	2.09	75	0	0.00	7	0	0.00	1	14
HUNTERDON	4	4	0.46	8	8	1.93	1	1	1.25	0	2
MERCER	8	5	0.18	12	11	2.31	5	2	0.00	3	25
MIDDLESEX	2	0	0.00	3	0	0.00	5	0	0.00	0	0
MONMOUTH	5	1	1.82	25	14	4.86	5	5	0.74	1	16
MORRIS	5	2	1.37	14	14	2.15	4	4	0.60	0	0
OCEAN	6	2	0.00	6	6	5.04	4	3	4.61	0	0
PASSAIC	7	3	1.59	22	6	3.11	6	2	6.46	0	0
SALEM	4	3	0.00	5	0	0.00	1	0	0.00	0	0
SOMERSET	5	3	0.92	44	25	2.12	2	2	11.85	0	0
SUSSEX	4	3	1.43	19	18	5.38	2	2	2.91	0	0
UNION	3	0	0.00	62	33	3.34	5	2	12.71	0	3
UNKNOWN	0	0	0.00	0	0	0.00	0	0	0.00	0	0
WARREN	7	5	0.93	46	18	4.25	2	2	6.77	0	1
NW Region	23	13	1.37	101	56	4.14	14	10	3.39	0	1
NE Region	26	5	1.61	117	8	2.60	24	8	4.74	2	43
CW Region	17	12	0.46	64	44	2.13	8	5	4.74	3	27
CE Region	16	3	0.52	96	53	3.91	19	10	3.77	1	19
South Region	38	16	0.93	133	87	4.30	21	15	2.94	0	15
State Total	120	49	1.05	511	248	3.69	86	48	3.73	6	105