

New Jersey Department of Health and Senior Services
Communicable Disease Service
Influenza Brief
Week Ending September 12, 2009 (MMWR Week 36)

Influenza activity level: **REGIONAL**

NOTE: Regional activity is primarily indicative of confirmatory laboratory results for novel influenza A H1N1 and seasonal influenza AH3 from 4 counties in the past 3 weeks.

New Jersey	% ILI week 36 (range county level)	% ILI week 36 last year	State Baseline*	% ILI previous week 35 same year
Long Term Care Facilities	0.88% (0.00-4.35%)	0.53%	0.69%	0.72%
Schools (absenteeism)	2.60% (0.72-14.29)	CLOSED	5.17%	CLOSED
Emergency Departments	3.38% (0.00-10.17%)	1.52%	2.60%	2.70%

Influenza Activity Level Public Health Regions

Region	Counties in Region	Activity Level
NW Region	Morris, Passaic, Sussex, Warren	NO ACTIVITY
NE Region	Bergen, Essex, Hudson	LOCAL
CW Region	Hunterdon, Mercer, Somerset	NO ACTIVITY
CE Region	Middlesex, Monmouth, Ocean, Union	REGIONAL
South Region	Atlantic, Burlington, Camden, Cape May, Salem, Cumberland, Gloucester	LOCAL

Sentinel Provider Surveillance

During week 36, 2.28% of sentinel provider patient visits were due to ILI. These data reflect reports from eleven (25%) of the enrolled sentinel providers.

During week 35, 2.33% of sentinel provider patient visits were due to ILI. These data reflect reports from thirteen (30%) of the enrolled sentinel providers.

* Baseline is calculated by taking the average of statewide percentages of ILI for a 3 year (2006, 2007, 2008) period during months when influenza is less likely to be circulating (May-August).

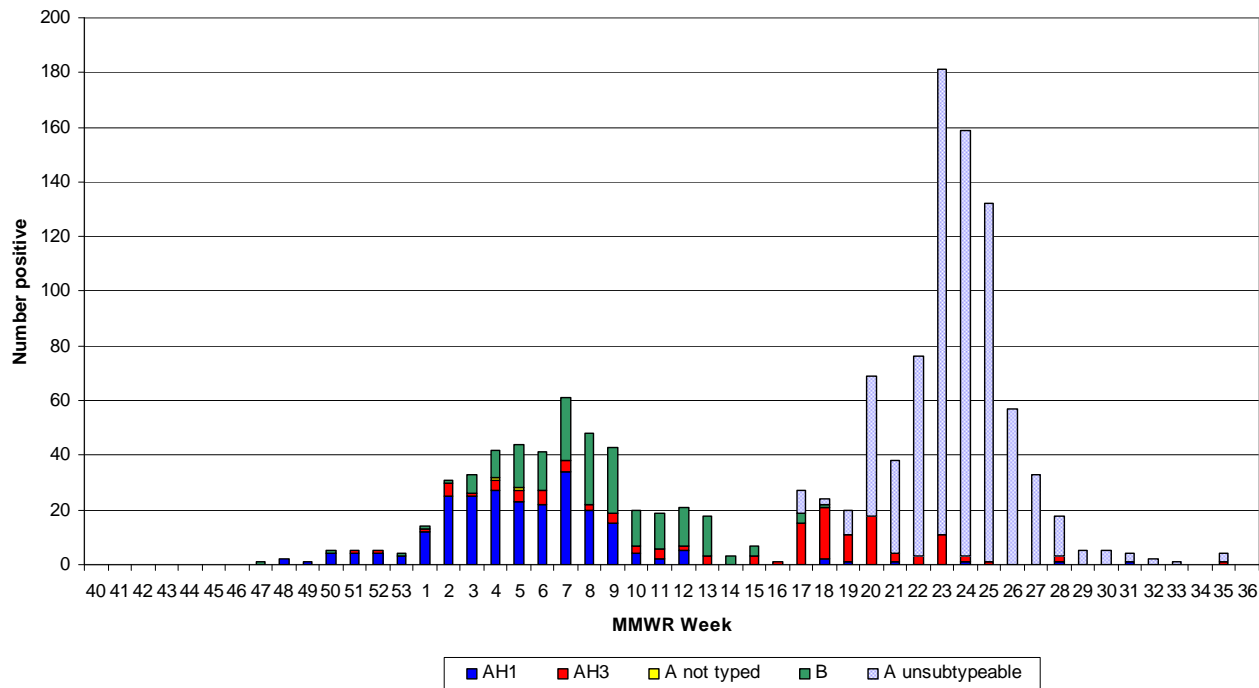
Laboratory

As of week 36, 565 samples were found to be positive by viral culture or PCR for influenza AH1, AH3 and influenza B. Please see graph on next page for weekly distribution. NOTES: Beginning next week, a break down of rapid influenza data will no longer be included in the table below. Total numbers of specimens tested and total number positive will be displayed by county at the end of this report.

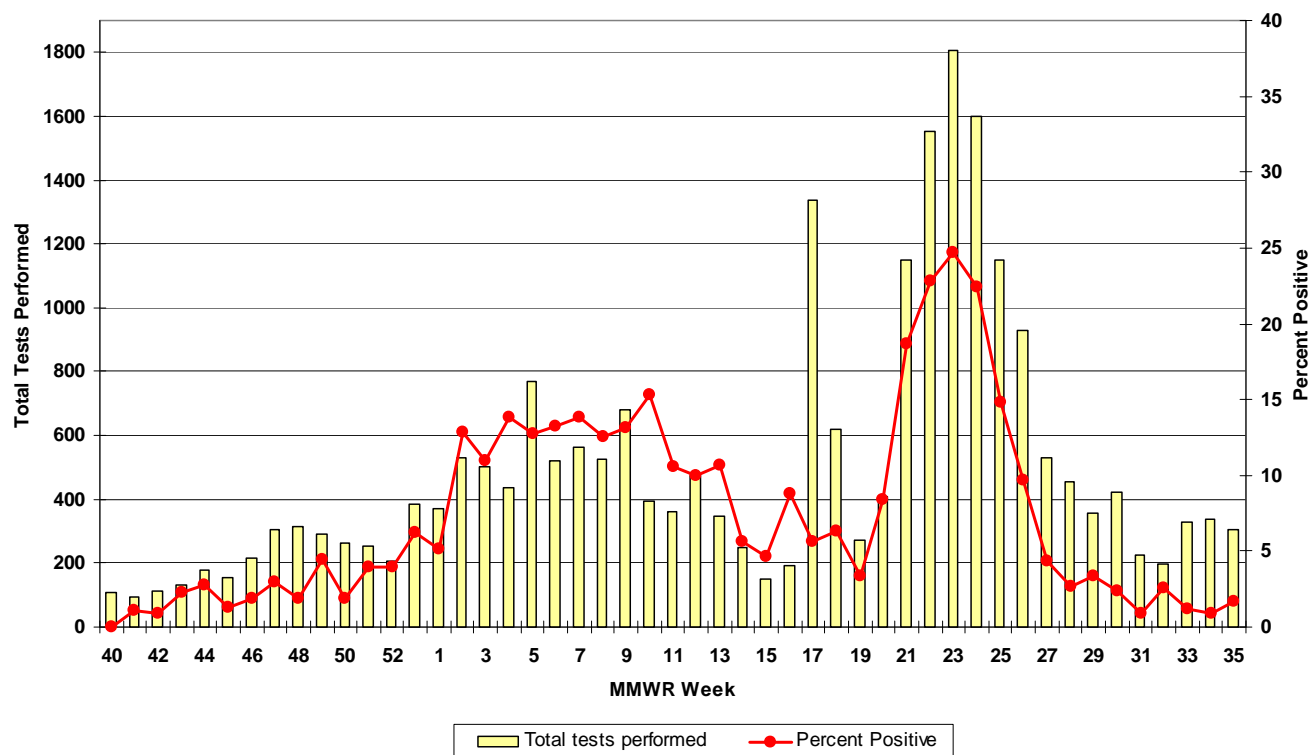
County	Week 40 to Week 36							Week 34, 35, 36						
	Rapid*			Culture*				Rapid*			Culture*			
	A	B	A/B	A H1	A H3	A UNK	B	A	B	A/B	A H1	A H3	A UNK	B
Atlantic County	88	17	0	9	2	0	2	0	0	0	0	0	0	0
Bergen County	206	13	0	11	17	2	7	0	0	0	0	0	0	0
Burlington County	111	24	0	2	0	0	1	0	0	0	0	0	0	0
Camden County	0	0	0	1	0	0	1	0	0	0	0	0	0	0
Cape May County	29	6	0	14	1	0	5	1	0	0	0	0	0	0
Cumberland County	0	0	0	7	1	0	6	0	0	0	0	0	0	0
Essex County	567	65	23	28	20	0	18	1	0	0	0	0	0	0
Gloucester County	0	0	0	5	0	0	13	0	0	0	0	0	0	0
Hudson County	291	12	0	26	20	0	29	1	0	0	0	1	0	0
Hunterdon County	35	0	82	22	8	0	13	0	0	0	0	0	0	0
Mercer County	28	0	0	14	10	0	8	0	0	0	0	0	0	0
Middlesex County	106	4	0	25	15	0	18	0	0	0	0	0	0	0
Monmouth County	67	23	78	13	5	0	8	5	0	2	0	0	0	0
Morris County	0	0	0	18	6	0	16	0	0	0	0	0	0	0
Ocean County	0	0	0	1	5	0	3	0	0	0	0	0	0	0
Passaic County	411	15	0	4	4	0	7	1	0	0	0	0	0	0
Salem County	1	1	0	0	0	0	1	0	0	0	0	0	0	0
Somerset County	0	0	23	15	6	0	12	0	0	0	0	0	0	0
Sussex County	73	23	0	1	1	0	2	0	1	0	0	0	0	0
Union County	268	6	18	19	10	0	21	0	0	0	0	0	0	0
Warren County	51	13	0	3	1	0	1	0	0	0	0	0	0	0
Unknown	0	0	0	1	0	0	0	0	0	0	0	0	0	0
	0	0	0	0	0	0	0	0	0	0	0	0	0	0
State Total	2332	222	224	239	132	2	192	9	1	2	0	1	0	0

* Baseline is calculated by taking the average of statewide percentages of ILI for a 3 year (2006, 2007, 2008) period during months when influenza is less likely to be circulating (May-August).

Influenza Laboratory Report
Positive Specimens by Week
2008-2009 Influenza Season
 *Culture results to week 15, PCR results week 15 to present

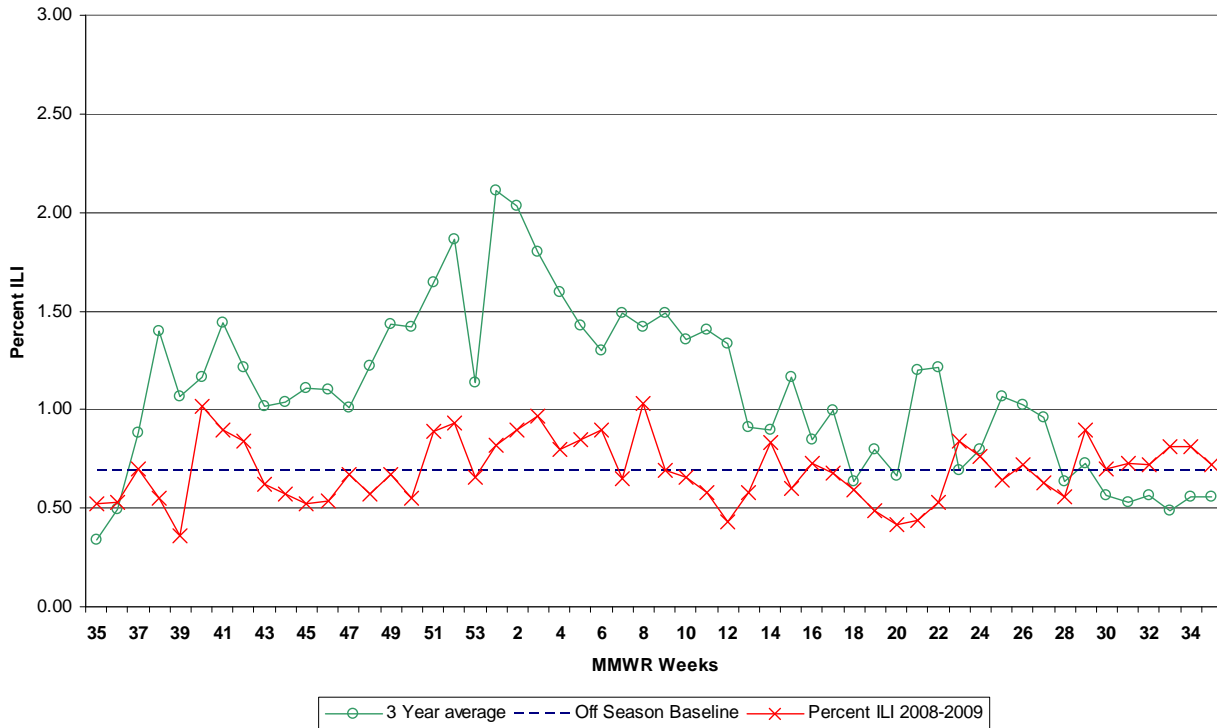


Influenza Rapid Antigen Tests
Total and Percent Positive
2008-2009 Influenza Season

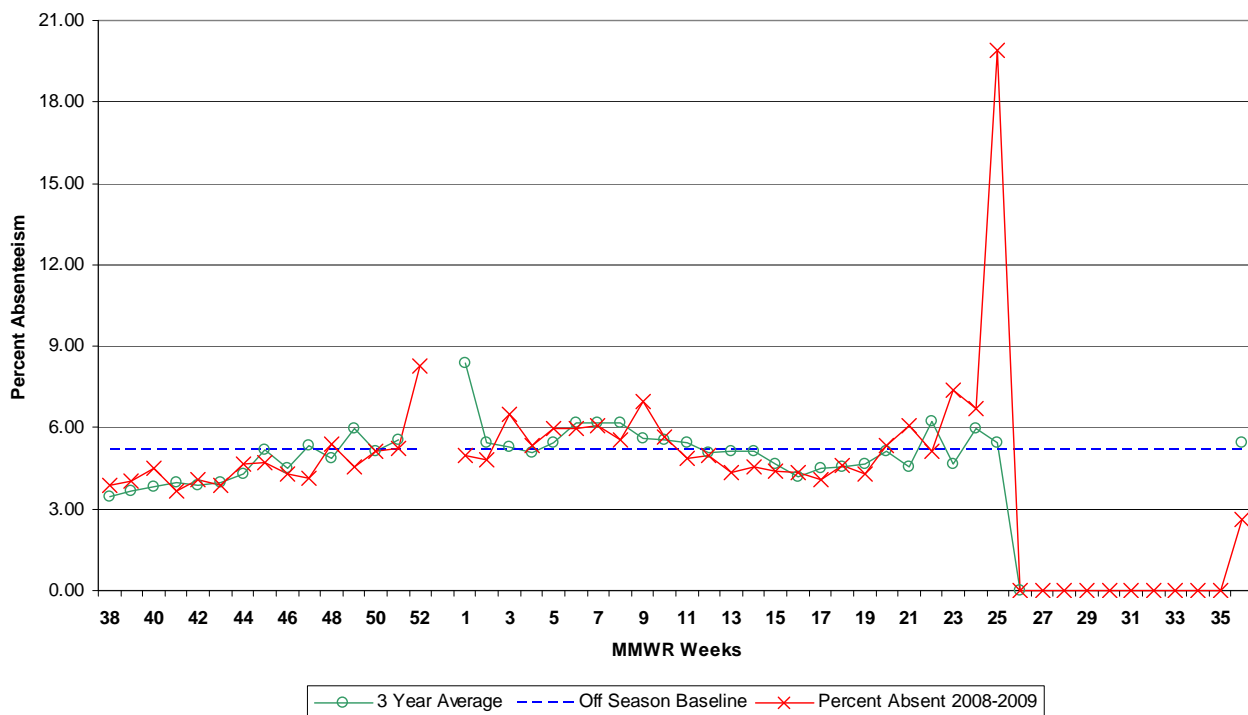


* Baseline is calculated by taking the average of statewide percentages of ILI for a 3 year (2006, 2007, 2008) period during months when influenza is less likely to be circulating (May-August).

**New Jersey Department of Health and Senior Services
Influenza-like Activity - Long Term Care Facilities**



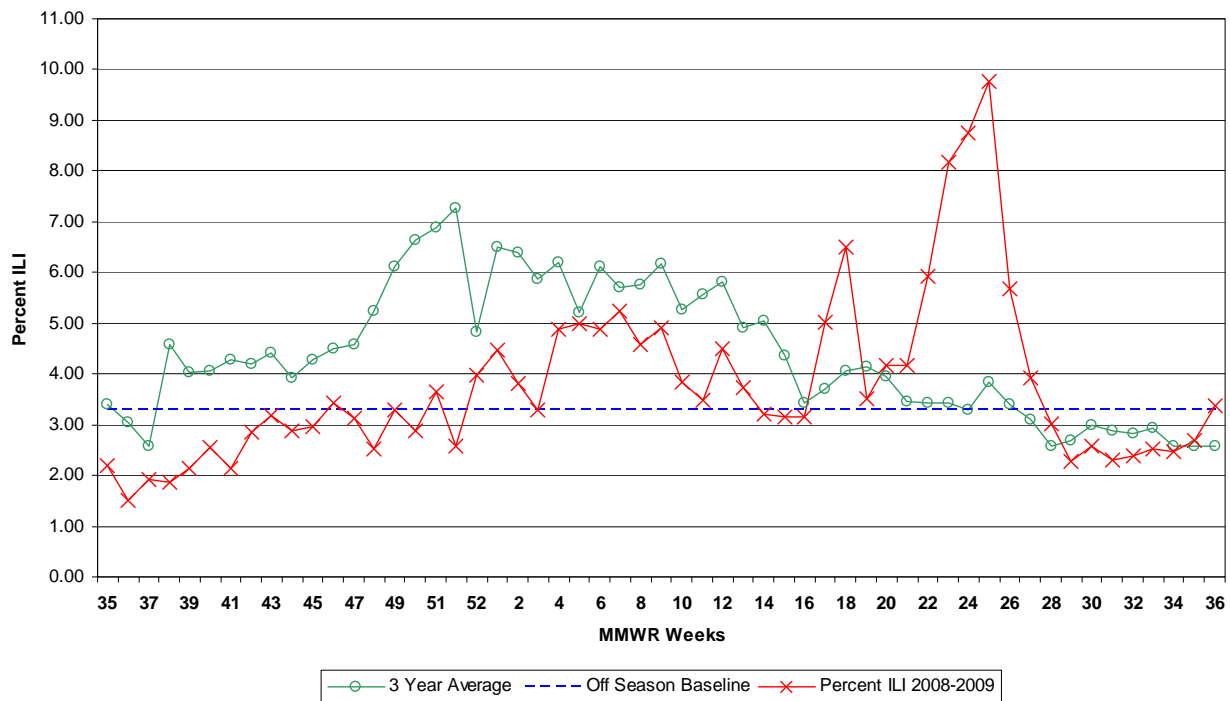
**New Jersey Department of Health and Senior Services
Influenza-like Activity - School Absenteeism**



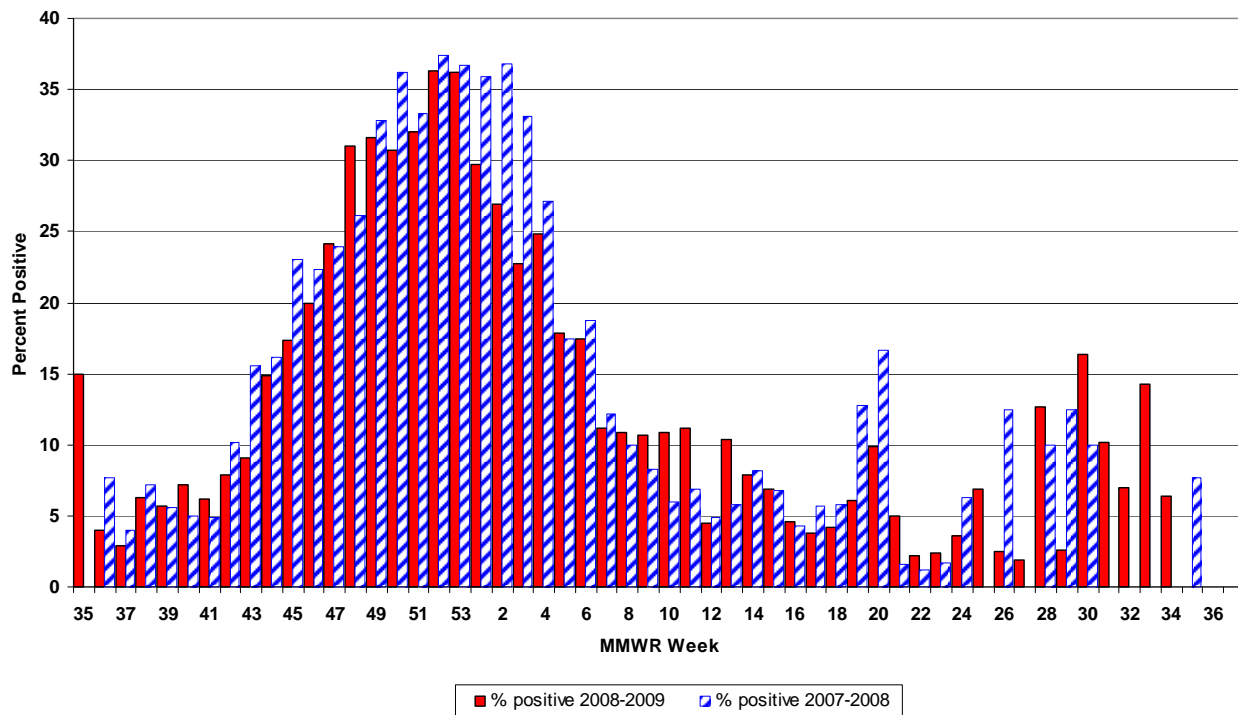
*Reports received from 5 counties.

* Baseline is calculated by taking the average of statewide percentages of ILI for a 3 year (2006, 2007, 2008) period during months when influenza is less likely to be circulating (May-August).

**New Jersey Department of Health and Senior Services
Influenza-like Activity - Emergency Departments**

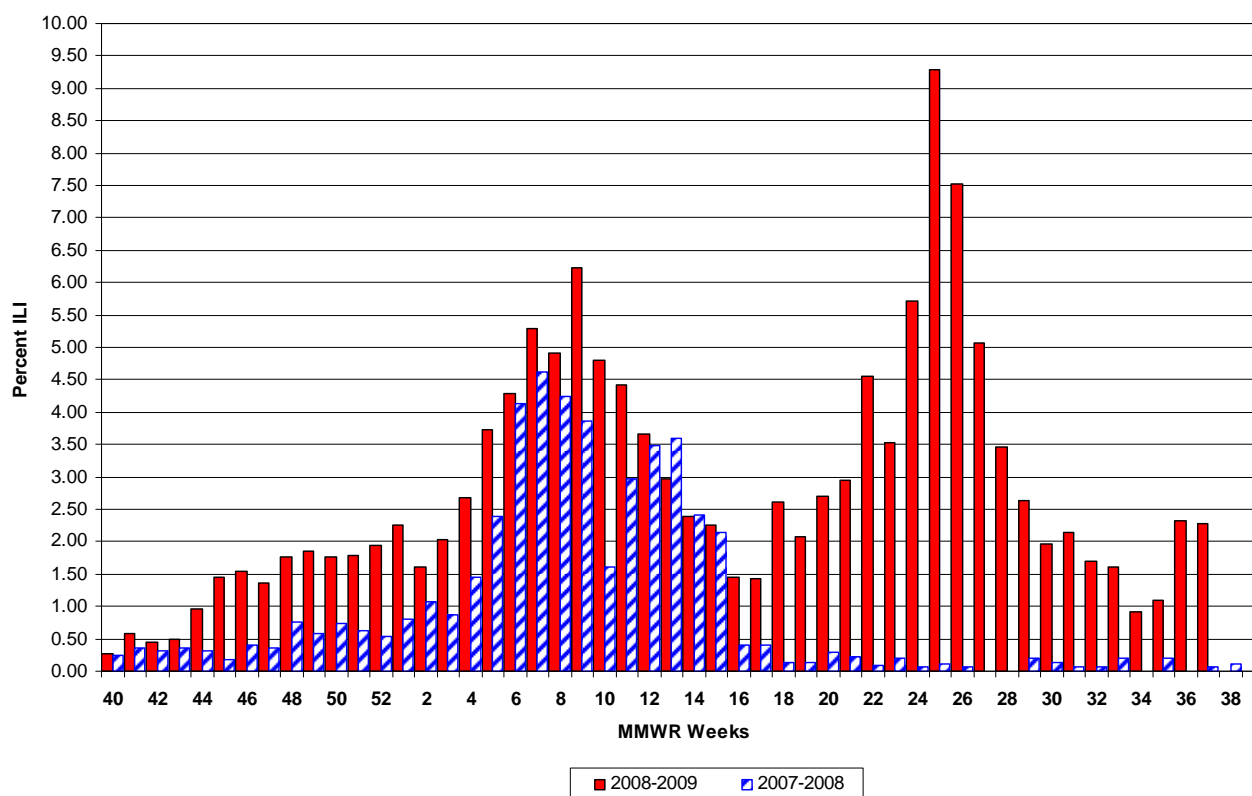


**New Jersey Department of Health and Senior Services
Respiratory Syncytial Virus (RSV) Surveillance by Week, 2006-2008**



* Baseline is calculated by taking the average of statewide percentages of ILI for a 3 year (2006, 2007, 2008) period during months when influenza is less likely to be circulating (May-August).

**New Jersey Department of Health and Senior Services
Influenza-like Activity - Sentinel Providers**



Influenza –associated Hospitalizations and Deaths

In MMWR week 36, 17 influenza-associated hospitalizations and no influenza associated deaths were reported.

NOTE: This data is not specific to novel influenza H1N1. Data collected is from all influenza associated illness/death. Hospitalization data is collected from a subset of hospitals throughout the state. Additional graphics will be included with the weekly influenza report beginning in MMWR week 40.

* Baseline is calculated by taking the average of statewide percentages of ILI for a 3 year (2006, 2007, 2008) period during months when influenza is less likely to be circulating (May-August).



	Long Term Care			Schools			Hospital Emergency Department		
County	# Enrolled	# Reports Rec'd	% ILI	# Enrolled	# Reports Rec'd	% Absent	# Enrolled	# Reports Rec'd	% ILI
September, 8, 2009 12:00 AM	MMRW WEEK 36								
ATLANTIC	4	1	0.57	19	11	3.74	4	4	0.38
BERGEN	3	0	0.00	25	0	0.00	6	5	3.54
BURLINGTON	6	3	0.00	115	23	2.45	3	2	0.34
CAMDEN	7	0	0.00	17	0	0.00	7	7	1.98
CAPE MAY	6	2	1.75	11	4	1.86	1	1	5.69
CUMBERLAND	6	2	2.90	18	1	14.29	3	3	1.35
ESSEX	18	5	0.38	34	0	0.00	11	9	3.14
GLOUCESTER	5	1	1.69	4	0	0.00	2	1	0.59
HUDSON	10	1	4.35	94	0	0.00	6	4	3.78
HUNTERDON	4	4	0.69	8	3	2.58	1	1	0.00
MERCER	11	0	0.00	26	0	0.00	5	5	4.12
MIDDLESEX	2	0	0.00	89	2	2.92	5	5	4.51
MONMOUTH	14	1	0.00	24	3	2.47	5	4	2.05
MORRIS	2	0	0.00	13	0	0.00	4	3	10.17
OCEAN	6	1	0.00	20	8	1.74	4	4	7.71
PASSAIC	9	2	1.20	23	9	2.64	6	2	1.67
SALEM	4	0	0.00	5	0	0.00	1	1	0.00
SOMERSET	6	2	1.82	63	0	0.00	2	1	2.37
SUSSEX	5	5	0.85	22	3	2.57	2	2	2.03
UNION	4	2	0.00	130	3	2.11	5	5	3.10
UNKNOWN	0	0	0.00	1	0	0.00	0	0	0.00
WARREN	8	2	0.00	24	1	0.72	2	2	0.00
NW Region	24	9	0.77	82	13	2.38	14	9	4.42
NE Region	31	6	0.78	153	0	0.00	23	18	3.41
CW Region	21	6	1.13	97	3	2.58	8	7	3.35
CE Region	26	4	0.00	263	16	2.12	19	18	4.49
South Region	38	9	1.42	189	39	2.88	21	19	1.36
State Total	140	34	0.88	784	71	2.60	85	71	3.38